

Importance of innate mucosal immunity and the promises it holds

Abhisek Dwivedy
Palok Aich

National Institute of Science
Education and Research, Bhubaneswar,
Odisha, India

Abstract: The body defense mechanism has evolved to protect animals from invading pathogenic microorganisms and cancer. It is able to generate a diverse variety of cells and molecules capable of specifically recognizing and eliminating a limitless variety of foreign invaders. These cells and molecules act together in a dynamic network and are known as the immune system. Innate mucosal immunity consists of various recognition receptor molecules, including toll-like receptors, NOD-like receptors, and RIG-I-like receptors. These recognition receptor molecules recognize various invading pathogens effectively, and generate an immune response to stop their entry and neutralize their adverse consequences, such as tissue damage. Furthermore, they regulate the adaptive response in cases of severe infection and also help generate a memory response. Most infections occur through the mucosa. It is important to understand the initial host defense response or innate immunity at the mucosal surface to control these infections and protect the system. The aim of this review is to discuss the effects and functions of various innate mucosal agents and their importance in understanding the physiological immune response, as well as their roles in developing new interventions.

Keywords: mucosa, immunity, innate, microorganisms, cancer

Introduction

The mucous membrane that covers the digestive and urogenital tracts, the respiratory canal, the eye conjunctiva, the inner ear, and layers of most of the exocrine glands, is a strong component of the immune system, with very specialized mechanical and chemical barriers that either prevent the entry of foreign bodies or facilitate their degradation through a series of chemical processes, most of which are yet to be fully clarified. The mucosa prevents colonization and invasion by foreign pathogens, and prevents any aggravated response of the immune system to such pathogens that could harm the organism. This is a rather local but specialized version of the immune system, and is well interlinked with the lymphatic system, and thus is known as mucosa-associated lymphatic tissue or, in a more functional sense, the mucosal immune system. There are various subsets of this broad term, including gut-associated lymphatic tissue, bronchus-associated lymphatic tissue, and nasal-associated lymphatic tissue. The mucosal immune system has two parts, ie, the innate system and the adaptive system. The innate system comprises various recognition molecules and natural killer cells, while the adaptive system comprises various antigen-presenting cells and the T and B lymphocytes.¹

The recognition of foreign bodies at the mucosal surface takes place in a number of ways. Cell-intrinsic recognition involves the dendritic cell recognizing cytosolic

Correspondence: Palok Aich
School of Biological Sciences, National
Institute of Science Education and
Research, Sachivalaya Marg, IOP Campus,
Bhubaneswar 751 005, Odisha, India
Tel +916742304062
Fax +916742302436
Email palok.aich@niser.ac.in

pathogen-associated microbial patterns (PAMPs) using various pattern recognition receptors, followed by the presentation of pathogens, either by the major histocompatibility complex (MHC) Class I pathway (via rough endoplasmic reticulum) or the MHC Class II pathway (via autophagy). Signaling by pattern recognition receptors induces costimulatory molecules and cytokines that activate T cells. In cell-intrinsic recognition, the MHC I pathway depends on an abundance of antigens, while the MHC II pathway depends on autophagy machinery. Cell-extrinsic recognition can recognize either pathogenic or infected cells. On encountering an infected cell, pattern recognition receptors induce the secretion of interferons (IFNs) and dendritic cell-activating cytokines. This is followed by MHC Class I or II antigen presentation. If toll-like receptors are involved in recognition, they induce costimulatory molecules and cytokines, thus activating the T cell response. On an encounter, pathogen toll-like receptors recognize the pathogen and move, along with the pathogen, into the cell phagosome where antigen processing and presentation occurs only via the MHC Class II pathway, followed by secretion of T cell activation molecules²⁻⁴ (see Figure 1).

The mucosal immune system is unique, being characterized by the presence of specific types of lymphocytes which are not found in the bloodstream and have a very different type of immune reaction, with the presence of the secretory antibody, immunoglobulin (Ig)A.⁵ Another characteristic feature of this system is the ability to differentiate, via pattern recognition receptors, between a pathogenic particle and a nonpathogenic one.⁶ Toll-like receptors, a class of pattern recognition

receptors, are specialized antigen- and adjuvant-sensing molecules found on almost all mucosal antigen-presenting cells. They not only recognize foreign pathogens, but also commensals, and thus maintain a steady-state environment inside the gut. Similar molecules, like NOD-like receptors and Type C lectins, also provide an immediate response to pathogens and tissue damage by recruiting innate immune cells, like macrophages and neutrophils, thus triggering tissue repair and switching over to adaptive immune mechanisms.⁷

The gastrointestinal tract is the largest mucosal surface in all mammalian systems, and most pathogens try to invade the body system through the gut mucosa. Intestinal epithelial cells comprise the most vital part of the gut mucosa and regulate the various gut processes, including digestion, secretion, absorption, and defense. Their main function is the transport of polymeric immunoglobulins produced by plasma cells in the lamina propria to the intestinal lumen via a receptor-mediated pathway and the recognition of foreign matter via pattern recognition receptors.⁸ They also have an important role in antigen presentation, and have the dual ability to present both Class I and Class II antigens and also secrete immunologically active proteins in response to proinflammatory cytokines, thus preventing any damage to the intestinal lumen and mucosa.⁹ In addition, epithelial cells express CD14 molecules that bind to lipopolysaccharides and also control the interaction between commensals and the mucosa.¹⁰

The second class of cells in the mucosa basically comprises T lymphocytes expressing CD8, CD45RO, integrins, and perforins.¹¹ Another specialized class of cells, called M cells, found in the mucosal membrane, help absorb antigens and then transport them to Peyer's patches, followed by antigen activation of T cells.¹²

Innate immunity cells release proinflammatory cytokines that subsequently activate the components of the adaptive immune system. Specialized epithelial and intraepithelial cells also form a part of the mucosa, and maintain a balance by self-renewal, and also maintain a balance between the commensal colonies residing in the mucosa. Migration of T and B lymphocytes from the lymph nodes to the common mucosa has been observed, and is related to activation, recirculation, and activation of lymphocytes, and also the development of memory lymphocytes. Such movements are controlled by specific integrin-type molecules and chemokines secreted in the mucosa, including CC chemokine ligand 25.^{13,14} Regulatory T cells secrete lymphokines, including interleukin (IL)-10 and transforming growth factor beta (TGF- β), that result in oral immunosuppression/tolerance,

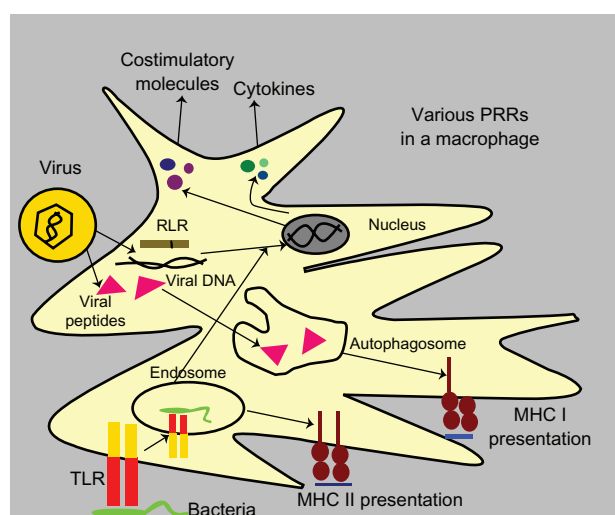


Figure 1 Pathogen recognition by dendritic cells in mucosa by toll-like receptors and RLR and their processing via major histocompatibility complex I and II pathways in a macrophage.

thus preventing any immune response to food particles during ingestion.¹⁵ Similar mechanisms are hypothesized to work in the colorectal immune response, which has no effect on the small intestine, and in the nasal immune response in the upper respiratory tract mucosa that is exposed to large amounts of nasal and lacrimal secretions.

The populations of various intra-epithelial T lymphocytes increase gradually, but markedly, in both germ-free and normal mice after birth upon colonization by commensal microbiota, and are thus important in controlling their growth and interaction with cells in the local environment of the gut mucosa.¹¹

A study of bronchus-associated lymphatic tissue in patients with lung carcinoma showed T cells surrounding B cell follicles, and most CD4 T cells also exhibited CD45RO, and thus had memory responses as well. All the B cells exhibited $\alpha 4$ integrin and L-selectin, while only 43% and 20% of the total population of T cells showed $\alpha 4$ integrin and L-selectin, respectively. In lung mucosa-associated disease, there is a strong combined mucosal and systemic immune response regulated by CD4-expressing T_H2 cells and T_H1 cells in patients with asthma and tuberculosis, respectively.¹⁶ L-selectin, a receptor molecule prominent in the head and neck mucosa and in the lymph nodes, regulates the trafficking of lymphocytes to these sites. Another set of molecules, known as α -defensins, regulates the mucosal immune system of the gut and prevents microbial invasion at the epithelial surface. These are of six types, ie, human neutrophil peptides 1, 2, 3, and 4, and human defensins 5 and 6. Their counterparts in murine gut-associated lymphatic tissue are known as cryptidins. Human defensin 5 is expressed in disorders like gastritis, ulcerative colitis, and Crohn's disease. Human neutrophil peptides 1, 2, and 3 are strongly expressed in all types of inflammatory bowel disease. Activation of α -defensins and cryptidins requires a colocalized molecule known as metalloproteinase matrilysin.¹⁷

In metalloproteinase matrilysin-mutant mice, there is a prominent absence of cryptidins and accumulation of cryptidin precursors. Such mice are much more susceptible to ingested pathogens than wild-type varieties.

Human defensins not only prevent invasion by pathogens, but also trigger the influx of different populations of T lymphocytes for further adaptive responses. C type lectins, like RegIII γ , are expressed in the intestinal mucosa, have antimicrobial properties, interact with bacteria via a peptidoglycan mechanism, and aid the recruitment of symbiotic bacteria in the intestine.¹⁸

Mucosal immunity is directly involved in a number of infectious diseases and allergies. In the upper respiratory

tract, where active influx of IgA and IgM occurs in response to any immune aggravation, with some locally produced IgG, Waldeyer's ring exhibits adhesion molecules and various chemokine receptors expressed in B lymphocytes present there, due to a higher possibility of airborne allergens, which are more frequent.¹⁹

A general hypothesis that can be made from all the studies done to date at the mucosa is that innate immunity is the true regulator of the immune system. This hypothesis is at the basis of almost all mucosal disease, as well as mucosal vaccine development.

Mucosal diseases

Because the mucosal surface serves as a portal for many infectious diseases, almost all types of pathogens, ie, bacteria, virus, fungi, and parasites, cause disease at the mucosa while trying to invade the body. Some common mucosal diseases caused by a variety of pathogens are described.

The main disease of concern affecting the intestinal mucosa is inflammatory bowel disease, in particular, Crohn's disease and ulcerative colitis. Crohn's disease is a transmural inflammation of the bowel at the terminal ileum and right colon preferentially, but sometimes also involves the colon, rectum, and peritoneal area. The main symptoms are diarrhea, abdominal pain, and weight loss, often accompanied by extradigestive manifestations, including fever, ulcers, arthralgia, and erythema nodosum. About 20% of people with Crohn's disease have a blood relative with some form of inflammatory bowel disease, often a brother or sister, and sometimes a parent or child. Crohn's disease can occur in people of all age groups, but is more often diagnosed in people aged 20–30 years. Ulcerative colitis causes inflammation and ulcers in the top layer of the lining of the large intestine. Ulcerative colitis primarily affects the colonic mucosa, and the extent and severity of colon involvement are variable. In its most limited form, it may be restricted to the distal rectum, while in severe cases, the entire colon is involved. Both genders are equally affected. In Western Europe and in the US, ulcerative colitis has an incidence of approximately 6–8 cases per 100,000 and an estimated prevalence of approximately 70–150 per 100,000. The leading initial symptom of ulcerative colitis is diarrhea with blood and mucus, sometimes with pain. Fever and weight loss are less frequent. Extraintestinal symptoms can be an initial manifestation or can occur later in the course of the disease. In proctitis, obstipation can very occasionally be the initial symptom. Eighty percent of patients have only proctitis or proctosigmoiditis, and only 20% have extensive

colitis. The etiology of both Crohn's disease and ulcerative colitis remains unknown, although very recent studies have hypothesized multiple factors leading to the disease, ranging from tobacco smoking to malnutrition or unhealthy eating habits.^{20,21}

Helicobacter pylori is a Gram-negative bacterium that colonizes the gastric mucosa and causes chronic gastritis and gastric ulcers. The bacterium adheres strongly to the surface of gastric epithelial cells without actually invading them. *H. pylori* infection is relatively common worldwide, although less than one-quarter of infected individuals progress to the development of gastric disease. *H. pylori* infection is common in the US. About 20% of people younger than 40 years of age and half of those over 60 years of age have the disease. However, most infected individuals do not develop ulcers. Whether or not an individual proceeds to a disease state may be influenced by any combination of host, bacterial, and environmental factors. *H. pylori* weakens the protective mucous coating of the stomach and duodenum, which allows acid to get through to the sensitive lining beneath. Both the acid and the bacteria irritate the lining and cause an ulcer. Serious problems may occur, including perforation (when the ulcer burrows through the stomach or duodenal wall), bleeding (when acid or the ulcer breaks a blood vessel), and obstruction (when the ulcer blocks the path of food trying to exit the stomach).²²

Diarrhea is the second leading cause of childhood morbidity and mortality worldwide, and each year almost two million children under five years of age die from severe gastroenteritis. Rotaviruses are the single leading cause of diarrhea-related deaths in this age group. It is estimated that each year, amongst children younger than five years of age, rotaviruses account for 114 million episodes of diarrhea, 25 million clinic visits, 2.4 million hospital admissions, and more than 500,000 deaths worldwide. About 99% of rotavirus-associated deaths occur in middle- and low-income countries, predominantly affecting infants in the first year of life living in socioeconomically deprived rural regions of Africa and Asia. In India alone, rotaviruses cause more than 120,000 deaths, 400,000 hospital admissions, 5 million clinic visits, and 25 million episodes of diarrhea annually. One in 250 children from the low-income countries of Africa and Asia die from rotavirus gastroenteritis before the age of five years. After an incubation period of 1–3 days, rotavirus gastroenteritis typically begins abruptly with fever and vomiting, followed by watery diarrhea. Less commonly, it may present with vomiting and diarrhea only, or even with either symptom alone with or without fever. Symptoms usually last

for 3–8 days, with dehydration, and electrolyte and acid-base disturbance as the most serious complications. Compared with other enteric pathogens, children hospitalized with rotavirus gastroenteritis are more likely to have high fever, vomiting, and dehydration. Noroviruses are important pathogens in both sporadic cases and outbreaks of gastroenteritis in humans. Noroviruses can affect individuals of all ages in a variety of settings. The most common acute symptoms are diarrhea and nausea followed by vomiting, abdominal pain, fever, and fecal incontinence. Various nonspecific symptoms are also reported on the first day of illness, with anorexia being most frequent, followed by thirst and lethargy, then headache and vertigo.^{23–26}

Entamoeba histolytica is a pathogenic organism that is widespread throughout the world, but is especially common in developing countries, where many people do not have access to clean water. The parasite causes invasive disease in over 50 million people and an estimated 100,000 deaths per year, making it a leading cause of parasitic death in humans. Infection with *E. histolytica* can lead to asymptomatic colonization, amoebic colitis, or disseminated extraintestinal disease. The infectious cycle of *E. histolytica* begins with ingestion of the cyst, a nondividing, quadrinucleate form that is able to survive in the environment. After ingestion, the cyst undergoes excystation in the small intestine to produce the proliferative trophozoite form. Trophozoites colonize the colon, adhering to the mucous layer by means of lectin, which binds colonic mucins. Disease results when this mucous layer is penetrated and the trophozoites attack the intestinal epithelial cells after entering the mucous layer due to a protective, chitin-containing cell wall.^{27–29}

Influenza is a highly contagious acute respiratory disease caused by infection of the host respiratory tract by the influenza virus. The global morbidity and mortality burden of influenza is considerable, with an estimated one million deaths annually worldwide. In temperate regions, there are clear seasonal variations in the occurrence of influenza, with a marked peak in the cold winter months. In contrast, seasonality is less well-defined in tropical regions, where there is high background influenza activity throughout the year, with epidemics occurring in the intermediate months between the influenza season in temperate countries of the Northern and Southern hemispheres. The major limitation of current influenza vaccines is that they are strain-specific and thus ineffective against new variants of the viruses resulting from genetic changes that cause antigenic drifts in hemagglutinin or antigenic shifts to another hemagglutinin subtype. Administration of vaccines is also limited by the potential

for sensitivity to the egg-propagated vaccine and by the fact that, as a preventative measure, vaccination cannot provide a means of immediate treatment or prophylaxis.^{30,31}

Human papilloma virus (HPV) infections occur all over the world. HPV is associated with a plethora of clinical conditions, ranging from innocuous lesions to cervical cancer. HPV infects the skin and mucosa, and may induce the formation of both benign and malignant tumors. The infection starts when the virus penetrates the new host through micro injury. The development of the incubation phase into active expression depends on three factors, ie, cell permeability, virus type, and host immune status. Mucosal HPV infects and replicates in the mucous membranes (genital, oral, and conjunctival papillomas), and induces epithelial proliferation. In recent years, HPV has become one of the most common sexually transmitted diseases in both men and women worldwide. Cervical cancer is also one of the most common cancers in women. Recurrent respiratory papillomatosis is a benign, often multifocal neoplasm. A potentially fatal manifestation of HPV infection, recurrent respiratory papillomatosis is characterized by multiple warty excrescences on the mucosal surface of the respiratory tract.^{32,33}

Molecules of mucosal immunity

Mucosal immune regulation is activated and induced by various pathways utilizing a variety of biomolecules, including lectin, selectins, integrins, NOD-like receptors, pyrin domain-containing NOD-like receptors (NALPs), and retinoic acid-inducible protein-1 (RIG-I)-like receptors, with the most important being the toll-like receptors.

Mammalian toll-like receptors are a class of pattern recognition receptors that play a major role in the initiation of innate mucosal immune responses and the following adaptive immune responses to microbial pathogens. Activation of the toll-like receptor signaling pathway leads to the expression of numerous genes regulating host defense, including inflammatory cytokines, chemokines, antigen-presenting molecules, and costimulatory molecules. These evolutionarily conserved receptors, homologs of the *Drosophila* toll gene, recognize highly conserved structural motifs only expressed by PAMPs. PAMPs are very different from host cell-surface molecular patterns, and toll-like receptors have unique recognition ability for PAMPs. TLR1, TLR2, TLR4, and TLR6 recognize lipid microbial ligands, TLR3, TLR7, TLR8, and TLR9 recognize nucleotide ligands, TLR5 recognizes protein ligands, and uropathogenic organisms are recognized by TLR11.¹

Toll-like receptors are Type 1 transmembrane proteins characterized by an extracellular domain containing

leucine-rich repeats and a cytoplasmic tail that contains a conserved region called the toll/IL-1 receptor domain. The structure of the extracellular domain of TLR3 was recently revealed by crystallography studies as being a large horse shoe shape. Stimulation of toll-like receptors by PAMPs initiates signaling cascades that involve a number of proteins, including myeloid differentiation primary response gene (88), toll/IL-1 receptor domain-containing adapter-inducing IFN- β , and IL receptor-associated kinase.¹ These signaling cascades lead to the activation of transcription factors, such as activator protein-1, nuclear factor kappa B (NF κ B), and IFN regulatory factors, inducing the secretion of proinflammatory cytokines and effector cytokines that direct the adaptive immune response. IL receptor-associated kinase-4 then activates IL receptor-associated kinase-1 by phosphorylation. Both IL receptor-associated kinase-1 and IL receptor-associated kinase-4 leave the myeloid differentiation primary response gene (88)-toll-like receptor complex and associate temporarily with TNF receptor-associated factor (TRAF)6, leading to its ubiquitination. Bcl10 and MALT1 form oligomers that bind to TRAF6, and promote TRAF6 self-ubiquitination. Following ubiquitination, TRAF6 forms a complex with TGF- β activated kinase (TAK)2/TAK3/TAK1, inducing TAK1 activation. TAK1 is then coupled to the inhibitor of kappa B kinase gamma complex, which includes the scaffold protein, nuclear factor kappa B essential modulator, leading to the phosphorylation of I κ B and subsequent nuclear localization of NF κ B. Activation of NF κ B triggers the production of proinflammatory cytokines, such as tumor necrosis factor alpha (TNF- α), IL-1, and IL-12, which direct the adaptive immune response.^{34–36}

In one study, it was found that the expression pattern and function of toll-like receptors in different murine B cell subsets including follicular, marginal zone, B-1, and Peyer's patches, were different. B cell subsets express all known toll-like receptors, except TLR5 and TLR8. Strong proliferation and antibody secretion was recorded on stimulation by different toll-like receptor ligands, particularly ligands to TLR1 and 2, TLR2 and 6, and TLR4, 7, and 9. Marginal zone B cells have a similar pattern of toll-like receptor expression and response. However, B-1b cells do not respond strongly to TLR2 ligands. In contrast, Peyer's patch B cells respond strongly to TLR2, 6, and 7 ligation, but poorly to ligands for TLR9 and 4. Follicular B cells that stimulate the T cell-dependent immune response express and secrete antibodies to IgG3 and IgM in response to a variety of toll-like receptor agonists in vitro. An experiment done with cells of gut-associated lymphatic tissue revealed strong expression of

TLR9 specifically in Peyer's patches and mesenteric lymph nodes. In the Peyer's patches they were prominent on dendritic cells, B cells, follicle-associated epithelium, and M cells. TLR9 confers a wide range of innate immune defenses against foreign oligonucleotides derived from bacteria.³⁷

It was found that there was a high upregulation of costimulatory molecules in *Shigella dysenteriae* porin, such as C80 and CD86, followed by a marked increase in IgA secretion. These cells were found to express TLR2 and TLR6 for the detection of porin, and can thus be directly correlated with mucosal regulation in the case of *Shigella* infection.³⁸ Induction of TLR2 by synthetic Pam₃CysSK4 in intestinal mucosa demonstrated a tight junction-associated barrier assembly preventing stress-induced damage via the induction of Akt-mediated cell survival using the myeloid differentiation primary response gene (88). Inflammatory stress-like colitis results in breakage of tight junctions in intestinal cells, while treatment with TLR2-PCSK4 effectively restores tight junction integrity and suppresses mucosal inflammation, thus providing a way to use toll-like receptors to modulate mucosal injury.³⁹ *Shigella* infection induces the production of NFκB and IL-8 in intraepithelial cells and is mediated by NOD1.⁴⁰ It has also been established that Type I fimbriae on *Shigella* are detected by toll-like receptors.⁴¹

Ethanol intake causes great stress to the intestinal mucosa and damages epithelial cells. A study in C57BL/6J mice with ethanol injury demonstrated the expression of TLR4 following cyclo-oxygenase-2 and prostaglandin E₂ expression, that was further followed by expression of macrophage inflammatory protein-2. Thus TLR4 can have a protective role in ethanol poisoning of the gut.⁴² It was demonstrated in a murine study of *Helicobacter*-dependent colitis that mice lacking TLR4 showed low expression of IL-10 and thus had dysregulation in T cell functioning and lack of homeostasis in mucosal cells.⁴³ In another study, using V-TLR4 transgenic mice, it was demonstrated that TLR4 has a role in the recruitment of B cells in the lamina propria of the mucosa and also upregulates the expression of IgA and IgA-mediated class switching of B cells.⁴⁴ Expression of TLR5 and TLR9 in the apices of gastric epithelial cells due to *H. pylori* infection was detected, although this expression was lost in *H. pylori* gastritis.⁴⁵ TLR5 was shown to detect *H. pylori* flagellin, although this reaction has low immunogenicity.⁴⁶ Similarly, heat shock protein 60 of *H. pylori* induces activation of TLR2 and 4, resulting in upregulation of NFκB and IL-8 secretion in gastric epithelial cells.⁴⁷

Elevation of TLR4 expression in epithelial cells of the colon has been observed in ulcerative colitis and Crohn's

disease, and Asp299Gly and Thre399Ile polymorphisms have been correlated with development of these diseases.⁴⁸ Upregulation of TLR2 expression in colitis has been observed in mice.²⁷ It has also been found in inflammatory bowel disease that flagellin-specific antibodies are present in high amounts in serum, which links this condition with TLR5.⁴⁹ Intestinal myofibroblasts were shown to express TLR2 and TLR4 in response to lipopolysaccharide and lipoteichoic acid, and were linked to the development of fibrosis related to Crohn's disease.⁵⁰ Various toll-like receptors of the enteric mucosa are known to work alongside NOD2, and control inflammatory bowel disease with excessive expression of NFκB.⁵¹ In the event of *E. histolytica* infection, neutrophil influx to the infection site followed by IL-8 expression was identified a long time ago, and later found to be a TLR2- and TLR4-dependent mechanism induced by lipopeptide phosphoglycan from *E. histolytica*.^{52,53}

Commensal-dependent colitis is a condition that mostly arises due to deficiency of the anti-inflammatory and immune tolerance pathways. In a study carried out in IL-10-mutant and IL-2-mutant mice, it was observed that in the absence of toll-like receptor signaling pathways, both these mutant strains developed commensal-dependent colitis due to a possible lack of innate immune regulation.⁵⁴

TLR4 was shown to be the immediate responder to *Salmonella* infection while TLR2 was linked to a later response.⁵⁵ *Salmonella* flagellin has been shown to induce TLR5 activation in intestinal epithelial cells.⁵⁶ Studies in TLR4-mutant mice have confirmed the role of TLR4 in infection control and production of TNF-α and several other chemokines.⁵⁷ *Salmonella*-susceptible mice were shown to be deficient in TLR5, and this was linked to the SPI2 pathogenicity island and SopE2 guanine exchange factor in *Salmonella*.^{58,59} *Salmonella typhi* was shown to inhibit TLR4 and TLR5 responses, and such infection were unable to produce IL-8 or neutrophil activation.⁶⁰ Resolution of primary *Salmonella* infection, the major causative agent of typhoid fever, resulting in enteric bleeding from Peyer's patches, was demonstrated to be controlled by the expression of a toll/IL-1R domain-containing adaptor protein through downstream signaling via TLR1, 2, 4, and 6.⁶¹

A common cause of enteric diarrhea is *Escherichia coli*, the lipopolysaccharide of which is readily recognized by TLR4 of intestinal epithelial cells.⁶² In the event of infection by pathogenic strains, it was found that TLR5 induced activation of NFκB and IL-8 production by intraepithelial cells.⁶³ *E. coli* Type 2 enterotoxin was shown to activate TLR2 through an interaction of its B subunit.⁶⁴ It is also established

that fimbriae on *E. coli* activates TLR2 and TLR4 and causes inflammation, followed by IL-8 secretion.⁶⁵

It has been shown that TLR9-deficient mice have upregulation in the population of CD4Foxp3 regulatory T cells (T-regs) and a reduction in the expression of IL-17- and IFN- γ -producing effector T cells. In such strains of mice, engagement of TLR9 from hematopoietic-derived cells controlled the T-reg population and gut priming for the immune response to *Encephalitozoon cuniculi* infection.⁶⁶ Studies of total parenteral feeding showed upregulation of various toll-like receptors in the intestinal mucosa to prevent bacteria-mediated septic shock arising from IFN- γ -mediated epithelial cell apoptosis due to lack of enteric feeding. The major toll-like receptors involved were TLR4, TLR5, TLR7, and TLR9.⁶⁷ A toll-like receptor study in goats (*Capra hircus*) revealed expression of all toll-like receptors in peripheral blood mononuclear cells, as well as lung mucosal lymphocytes, with high amounts of TLR10. TLR3, 4, and 10 were expressed at lower levels in the uterine and jejunal mucosa, while the mucosa of the uterus and skin expressed high TLR6 levels.⁶⁸

The detection of viral influenza has been linked to TLR3, 7, and 8 for a long time. A case study in rat H3N2 influenza showed stimulation of Type 1 IFN, TNF- α , IL-1, and IFN- γ by TLR7 and TLR8. Prophylactic administration of these toll-like receptors suppresses viral titers in the lung with local IFN secretion, hinting at the potential prophylactic and/or therapeutic use of these toll-like receptors.⁶⁹ Another study of *Haemophilus influenza* in mice demonstrated the role of TLR4 in intranasal immunization by activating the T_H1 response followed by mucosal IgA and IgG secretion, all of which were absent in TLR4-mutant mice.⁷⁰ It was also shown in another study that cigarette smoke mixed with double-stranded DNA induces expression of RANTES (regulated on activation normal T cell expressed and secreted) in patients suffering from chronic rhinitis, followed by activation of TLR3, leading to high levels of human β -defensin 2, while cell activation was also upregulated.⁷¹ Nasal mucosa inflammation has been reported to be mediated by TLR4 via a local T_H1 and T_H2 response and upregulation of IL-10. This TLR4-mediated activation is induced by lipopolysaccharide and expression of the TLR4 receptor by CD3 T cells.⁷² Smooth muscle cells in human airways have been shown to express all toll-like receptors. TNF- α and double-stranded RNA were found to be the most potent inducers of TLR2 and TLR3, and along with these two cytokines, IFN- γ helped activation of TLR4. Toll-like receptor activation led to the release of IL-8 and eotaxin. When Dexamethasone is

administered with IFN- γ and TNF- α , a strong TLR2 expression is induced. Together, TLR2, 3, and 4 were found to be major activators of chemokine release and mucosal tolerance in human airways.⁷³ Epithelial nasal polyp cells were found to express TLR3 strongly on induction by double-stranded RNA and then mediated very strong proinflammatory responses via the secretion of RANTES, IP-10, IL-8, and granulocyte-macrophage colony-stimulating factor. Similar studies with lipopolysaccharide also mediated similar responses but were comparatively weaker.⁷⁴ A study of bovine nasal-associated lymphatic tissue infected with foot and mouth disease virus demonstrated high expression of TLR4 mRNA from the dorsal soft palate cells in the acute stages of the disease, along with strong expression of mRNA for IFN- α , with some expression of IFN- γ , IL-1 α , TNF- α , and IL-2.⁷⁵

A study of airway epithelial cells in cystic fibrosis showed high expression of TLR2 in diseased cells on induction and mediated proinflammatory responses in the airway mucosa.⁷⁶ Stimulation of lung mucosal TLR2 and TLR6 by MALP-2 showed secretion of IL-8 and macrophage inflammatory protein-I β and enhances phagocytosis.⁷⁷ Patients suffering from chronic rhinosinusitis with nasal polyps exhibited high expression of TLR2 followed by induction of high quantities of macrophage inflammatory protein- α , RANTES, and granulocyte-macrophage colony-stimulating factor.⁷⁸ The virulence of Group B *Streptococcus* is mainly due to the PBP1a protein required for cell wall synthesis and encoded by the *ponA* gene. An experiment in TLR2-mutant mice using two different strains of Group B *Streptococcus*, ie, wild-type and *ponA*-mutant, revealed that TLR2-mutant mice were more susceptible to infection by both strains of Group B *Streptococcus*, indicating the involvement of TLR2 in the immune response to Group B *Streptococcus* infection.⁷⁹ TLR2 and TLR4 show strong expression in the middle ear of the rat, and thus have a specific role in the detection of the airborne pathogens that usually invade the ear mucosa and lead to otitis.⁸⁰ It was found that oral mucosal Langerhans cells express TLR4, and stimulation of TLR4 showed expression of coinhibitory molecules, such as B7-H1 and B7-H3, and downregulation of the costimulatory molecule, CD86, while there was a high increase in IL-10 secretion followed by the induction of TGF- β 1, Foxp3, IFN- γ , and IL-2 in T cells. Thus, TLR4 has great importance in oral tolerance via Langerhans cells.⁸¹

It has been established that toll-like receptors have a role in activating both the cellular and humoral immune response in *Candida albicans* infection, along with C type lectin receptors.⁸² Gingival epithelial cells showed expression of

TLR2, TLR4, and TLR6, with the production of IL-6, and IL-8, and human β -defensins 1 and 2 in the oral mucosa. In the same study, it was found that a quorum-sensing molecule, farnesol, that regulates the virulence of *C. albicans*, had a synergistic effect in the production of these cytokines, along with TLR2, TLR4, and TLR6.⁸³ TLR2 and soluble CD14 expression was found to be unregulated in the oral mucosa in diseases such as oral lichen planus and burning mouth syndrome. These molecules are present in saliva, and thus, can be used as biomarkers to give an indication of such diseases. However, the expression of TLR2 was found to be lowered in oral mucosa epithelial cells.⁸⁴

Papillomavirus is a great threat to the mucosal membrane because it invades the human body through the mucosa and is a potential cause of cancer at a number of sites, including the vulva, uterus, intestine, and anus. TLR4 can be used as a biomarker to study papillomavirus infection. In a bovine study, infection with the E7 and E2 strains of bovine papillomavirus-1 was demonstrated to reduce expression of TLR4 in fibroblasts significantly.⁸⁵ The human fallopian tube is also lined by mucosa and exhibits mucosal tolerance against several viral infections. Epithelial cells of the fallopian tube express TLR1-9. These cells, when treated with a TLR3 agonist, showed upregulation of IL-8, TNF- α , human β -defensin 2, and IFN- β , and also induced TLR2, TLR3, and TLR7.⁸⁶ Viral infection caused by rotavirus, calicivirus, and adenovirus of the gut is usually sensed by TLR3 and TLR8. Surface TLR3 has been shown to interact with rotaviral double-stranded RNA. Single-stranded RNA viruses are usually detected by TLR7 and TLR8.^{87,88}

TLR2 expressed in trophoblast cells of the human placenta has been linked to disorders such as chorioamnionitis. Localized expression of TLR2 in cytotrophoblast and syncytiotrophoblast mucosal cells and decidual stromal cells was shown to be decreased in chorioamnionitis.⁸⁹ Recent research has also shown a link between TLR5 expressed in gut mucosa and obesity-related metabolic disorders. TLR5-deficient mice exhibited hyperphagia, hyperlipidemia, insulin resistance, and hyperadiposity.⁹⁰ In one study, *Staphylococcus aureus*-mediated allergic conjunctivitis of the eye was linked to TLR2, with high production of IL-4, IL-5, IL-13, and eotaxin, mediated by a T_H2 response, while TLR2-mutant mice failed to exhibit any of these responses.⁹¹ In a study of TLR4 in the vaginal mucosa of pregnant women, it was found that a single nucleotide polymorphism in TLR4 (896 A > G) resulted in a TLR4 variant causing high vaginal pH, leading to infection by *Gardnerella vaginalis* and some anaerobic Gram-negative rods, while women without this polymorphism were immune

against such infection.⁹² A study of vaginal *Trichomonas vaginalis* infection indicated the activation of TLR4 via secretion of proinflammatory cytokines, in particular TNF- α . This resulted in a heavy influx of leukocytes to the infection sites.⁹³

A general conclusion that can be drawn from the foregoing observations is that all the different pattern recognition receptors and molecules of innate mucosal immunity are the first to encounter and recognize a pathogen or antigen, and they further induce proinflammatory cytokine production, leading to adaptive immunity.

NOD-like receptors constitute a recently identified family of intracellular pattern recognition receptors, which contains more than 20 members in mammals. NOD-like receptors are characterized by tripartite-domain organization, with a conserved nucleotide binding oligomerization domain and leucine-rich repeats. NOD1 and NOD2 detect specific motifs within peptidoglycans. NOD1 senses D- γ -glutamyl-meso-DAP dipeptide which is found in the peptoglycans of all Gram-negative and some Gram-positive bacteria, whereas NOD2 recognizes the muramyl dipeptide structure found in almost all bacteria.^{94,95} NOD1 and NOD2 signal via receptor-interacting serine/threonine-protein kinase 2 (RIPK2). RIPK2 mediates ubiquitination of the inhibitor of kappa B kinase gamma, leading to activation of the receptor activator of NF κ B and the production of inflammatory cytokines, including TNF- α and IL-6. In addition to the NF κ B pathway, stimulation of NOD1 and NOD2 induces the activation of mitogen-activated protein kinases. Studies have shown the involvement of caspase-recruiting domain-containing protein (CARD)9 in the selective control of NOD2-dependent p38 and c-Jun N-terminal kinase signaling.⁹⁶⁻⁹⁸ Genetic variations in NOD2 are associated with Crohn's disease.⁹⁹ Several NOD1 polymorphisms are linked with the development of atopic eczema and asthma.¹⁰⁰ NOD2 is required for the expression of an antimicrobial peptide, cryptidin, found in the gastrointestinal mucosa.⁹⁸ NOD1-deficient mice are highly susceptible to infection with *H. pylori*, whereas NOD2-deficient mice are more susceptible to oral infection with *Listeria monocytogenes*.¹⁰¹

NOD2 deficiency results in abnormal development and function of Peyer's patches in mice. This phenotype is Peyer's patch-specific and not apparent after birth but progresses with time, having been observed for up to 52 weeks. Peyer's patches in NOD2-deficient mice are larger than in controls, with increased numbers of both M cells and CD4+ T cells. Knockout mice exhibit increased translocation of yeast and bacteria across Peyer's patches and higher concentrations of TNF- α , IFN- γ , IL-12, and IL-4.¹⁰²

Pyrin domain-containing NOD-like receptors play a key role in the regulation of caspase-1 by forming a multiprotein complex known as the “inflammasome”. Caspase-1 participates in the processing and subsequent release of proinflammatory cytokines, including IL-1 β and IL-18. At least two types of NALP inflammasomes have been identified, ie, the NALP1 inflammasome comprising NALP1, nucleotide-binding oligomerization domain, leucine-rich repeat and pyrin domain containing protein 1, CARD7, ASC (apoptosis-associated speck-like protein containing a CARD), caspase-1 and caspase-5, and the NALP3 inflammasome containing NALP3 (NLRP3, cryopyrin, cold-induced auto-inflammatory syndrome 1), ASC, cardinal, and caspase-1. Activation of caspase-1 induced by NALP3 appears to be toll-like receptor-independent, whereas secretion of mature IL-1 β seems to require two stimuli involving the toll-like receptor and NALP3. The first stimulus, a toll-like receptor ligand, such as lipopolysaccharide, triggers the generation of pro-IL-1 β , while the second, a stimulus such as adenosine triphosphate, induces oligomerization and inflammasome assembly. A murine variant of NALP1 (NALP1b) was shown to respond to the anthrax toxin, suggesting an engagement of the NALP1 inflammasome in the immune response to *Bacillus anthracis* infection. NALP3 mediates caspase-1 activation in response to a wide variety of bacteria, including *L. monocytogenes* and *S. aureus*.^{103–105}

RIG-I-like receptors (also known as Ddx58) contain RIG-I-like helicases, which are a family of cytoplasmic RNA helicases that are prominent in antiviral responses. RIG-I and melanoma differentiation-associated gene 5 (MDA-5) sense double-stranded RNA, a replication intermediate for RNA viruses, leading to the production of Type I IFNs in infected cells.^{106,107} Upon recognition of double-stranded RNA, they are recruited by the adaptor IPS-1 to the outer membrane of the mitochondria, leading to the activation of several transcription factors, including IFN regulatory factors 3 and 7, as well as NF κ B. IFN regulatory factors 3 and 7 control the expression of Type I IFNs, while NF κ B regulates the production of inflammatory cytokines. Interferon regulatory factor 3 and 7 activation involves TRAF3, NAK-associated protein 1, TANK (TRAF family member-associated NF κ B activator), and the protein kinase, TANK-binding kinase 1 (TBK1) or I κ B kinase epsilon.^{108–110} Experiments in RIG-I- and MDA-5-deficient mice have demonstrated that conventional dendritic cells, macrophages, and fibroblasts isolated from these mice have impaired IFN induction after RNA virus infection.¹¹¹ RIG-I disruption in mice resulted in reduced body weight caused by severe damage and inflammatory infiltration into

the colonic mucosa. The number of Peyer’s patches was significantly reduced in RIG-I-deficient mice, and RIG-I was found to control the transcriptional activity of G α 2, a negative regulator of T cell responses, which may mediate the modulatory effects of RIG-I.^{112,113}

The β -defensins are a family of antimicrobial peptides that are diversely expressed on mucosal surfaces, and in airways and submucosal gland epithelia. These small cationic peptides are products of individual genes and demonstrate broad-spectrum activity against bacteria, fungi, and some enveloped viruses. Their expression in airway epithelia is mostly induced by bacterial peptides or proinflammatory cytokines. β -defensins also act as chemokines for adaptive immune cells, including immature dendritic cells and T cells via the CCR6 receptor, and provide a link between innate and adaptive immunity.¹¹⁴ Lipocalin is a more recently identified mucosal molecule that responds to bacterial enterobactin and inhibits the colonization of *Klebsiella pneumoniae* followed by induction of IL-8 from cultured respiratory cells.¹¹⁵ This is followed by a strong influx of neutrophils to the site of infection. Specialized molecules known as cathelicidins, a type of defensin, also harbor the apical granules of epithelial cells and have shown antimicrobial activity in preventing the entry of larger pathogens. They also act as a bridge between innate and adaptive immunity by chemotactically attracting dendritic cells and T cells in the presence of severe immune aggravation.¹¹⁶

A case study of avian infectious bronchitis revealed potent T_H1 adaptive immunity accompanied by IL- β activation after primary immunization, with strong activation of T cells and IgA upregulation, and a local memory response governed by IgG at the bronchial mucosal surface after second immunization.¹¹⁷ TGF- β in the gut is known to suppress mucosal inflammation and to heal damaged mucosa by upregulating the deposition of extracellular matrix in the mucosal mesenchymal cells. It was found that in smoking-related chronic obstructive pulmonary disease, the population of mucosal mast cells showed a large increase, with altered expression of TGF- β , CD88, and renin. Conversely, in acute necrotizing pancreatitis, the total mast cell population in the gut was found to decrease. Antigen-processing in the gut is a well orchestrated process whereby M cells lacking the MHC Class II pathway take up foreign antigens through their irregular microvilli, transport them to follicular areas where they are processed by dendritic cells, and then IgA-secreting plasma cells are directed to produce IgA. Dimeric secretory immunoglobulin IgA prevents bacteria from adhering to the mucosa and their

further penetration into local cells. IgA has resistance to proteolysis and helps transport bactericidal chemicals like lactoferrin and lactoperoxidase to the bacterial surface.¹¹⁸ A study of trachoma infection of the eye mucosa revealed a high concentration of proinflammatory cytokines, such as TNF- α , which were instrumental in attracting and activating neutrophils, and low levels of T_H1 and T_H2 cytokines were observed in chronic trachoma. Conversely, prolonged production of TNF- α and IL- β together was associated with a reduction in the IL-1Ra inhibitory mechanism. Furthermore, there was the IL-2 class of cytokines were highly involved, including IL2, IL2-R, and IL-15.¹¹⁹

Conclusion

Innate mucosal immunity, although not well-studied to date, plays a significant role in pathogen trafficking in the body. It recognizes pathogens using its various molecules, and triggers cascades of signals to eliminate the foreign body, induce tissue repair, and further trigger the adaptive immune response. Innate mucosal immunity has its own special memory stores in the form of pattern recognition receptors which are heritable and highly specialized. Each pattern recognition receptor has the capability to distinguish a PAMP and, unlike the adaptive response, is genetic and evolutionarily conserved, thus making mucosal immunity the primary line of defense in almost all mammalian body systems. Similarly, mucosal vaccines trigger an innate immune response as a starting signal, which leads to adaptive memory, giving rise to specific immunity against diseases.

After skin, mucosal surfaces are the largest area of host-pathogen interaction in mammalian systems. The prospect of using the mucosal route for vaccination is increased by the fact that almost all infection either begins at or encounters this route. Most gastrointestinal, respiratory, urinary, and sexually transmitted diseases use the mucosal route for primary and subsequent infection. Vaccines are being developed to prevent the pathogen from attaching or colonizing the mucosal surface or their subsequent penetration and replication. The primary role of vaccines is to provide strong stimulation of IgA that further controls the adaptive immune response. Due to bystander suppression, mucosal tolerance can be activated using T-regs to produce suppressive cytokines.¹²⁰ This is primarily seen in human systems to prevent self-antigenic responses. It has been observed that nasal vaccines stimulate T-regs to produce IL-10, while oral vaccines stimulate T-regs to produce TGF- β . Increased doses had been shown to deplete the population of killer T cells and even higher doses cause their apoptosis.¹²¹

Innate mucosal immunity and mucosal vaccine development based on pattern recognition receptors has been a neglected area of research for years. However, recent research has given an idea of the involvement of innate mucosal immunity in different defense mechanisms, and has paved the way for ongoing research in this area. Mucosal pattern recognition receptor pathways, pattern recognition receptor structure-activity relationships, development of new mucosal adjuvant and pattern recognition receptor mimetics, are currently hot topics in mucosal immunity research. In this review, we have attempted to establish the importance of innate immunity which may lead to the development of future therapeutics for better disease management and control.

Acknowledgments

The authors would like to thank the Department of Atomic Energy, Science and Technology and the Department of Biotechnology, Government of India, for financial assistance.

Disclosure

The authors report no conflicts of interest in this work.

References

1. Mestecky J. *Mucosal Immunology*. 3rd ed. San Diego, CA: Academic Press; 2005.
2. Stetson DB. Connections between antiviral defense and autoimmunity. *Curr Opin Immunol*. 2009;21:244–250.
3. Blander JM, Medzhitov R. Toll-dependent selection of microbial antigens for presentation by dendritic cells. *Nature*. 2006;440:808–812.
4. Stetson DB, Ko JS, Heidmann T, Medzhitov R. Trex1 prevents cell-intrinsic initiation of autoimmunity. *Cell*. 2008;134:587–598.
5. Phalipon A, Cardona A, Kraehenbuhl JP, Edelman L, Sansonetti PJ, Corthesy B. Secretory component: A new role in secretory IgA-mediated immune exclusion in vivo. *Immunity*. 2002;17:107–115.
6. Akira S, Hemmi H. Recognition of pathogen-associated molecular patterns by TLR family. *Immunol Lett*. 2003;85:85–95.
7. Medzhitov R, Janeway C Jr. Innate immune recognition: Mechanisms and pathways. *Immunol Rev*. 2000;173:89–97.
8. Strober W, Fuss IJ, Blumberg RS. The immunology of mucosal models of inflammation. *Annu Rev Immunol*. 2002;20:495–549.
9. Bland PW. Mucosal T cell-epithelial cell interactions. *Chem Immunol*. 1998;71:40–63.
10. Funda DP, Tuckova L, Farre MA, Iwase T, Moro I, Tlaskalova-Hogenova H. CD14 is expressed and released as soluble CD14 by human intestinal epithelial cells in vitro: Lipopolysaccharide activation of epithelial cells revisited. *Infect Immun*. 2001;69:3772–3781.
11. Hayday A, Theodoridis E, Ramsburg E, Shires J. Intraepithelial lymphocytes: Exploring the Third Way in immunology. *Nat Immunol*. 2001;2:997–1003.
12. Fujihashi K, Kato H, van Ginkel FW, et al. A revisit of mucosal IgA immunity and oral tolerance. *Acta Odontol Scand*. 2001;59:301–308.
13. Stagg AJ, Kamm MA, Knight SC. Intestinal dendritic cells increase T cell expression of alpha4beta7 integrin. *Eur J Immunol*. 2002;32:1445–1454.
14. Mora JR, Bono MR, Manjunath N, et al. Selective imprinting of gut-homing T cells by Peyer's patch dendritic cells. *Nature*. 2003;424:88–93.

15. Ericsson A, Svensson M, Arya A, Agace WW. CCL25/CCR9 promotes the induction and function of CD103 on intestinal intraepithelial lymphocytes. *Eur J Immunol*. 2004;34:2720–2729.
16. Kawamata N, Xu B, Nishijima H, et al. Expression of endothelia and lymphocyte adhesion molecules in bronchus-associated lymphoid tissue (BALT) in adult human lung. *Respir Res*. 2009;10:97.
17. Wilson CL, Ouellette AJ, Satchell DP, et al. Regulation of intestinal alpha-defensin activation by the metalloproteinase matrilysin in innate host defense. *Science*. 1999;286:113–117.
18. Heather LC, Cole MA, Lygate CA, et al. Fatty acid transporter levels and palmitate oxidation rate correlate with ejection fraction in the infarcted rat heart. *Cardiovasc Res*. 2006;72:430–437.
19. Heritage PL, Brook MA, Underdown BJ, McDermott MR. Intranasal immunization with polymer-grafted microparticles activates the nasal-associated lymphoid tissue and draining lymph nodes. *Immunology*. 1998;93:249–256.
20. Sheil B, Shanahan F, O'Mahony L. Probiotic effects on inflammatory bowel disease. *J Nutr*. 2007;137(3 Suppl 2):819S–824S.
21. Zhang SZ, Zhao XH, Zhang DC. Cellular and molecular immunopathogenesis of ulcerative colitis. *Cell Mol Immunol*. 2006;3:35–40.
22. Ramakrishnan K, Salinas RC. Peptic ulcer disease. *Am Fam Physician*. 2007;76:1005–1012.
23. Candy DCA. Rotavirus infection: A systemic illness? *Plos Med*. 2007;4:614–615.
24. Hyser JM, Estes MK. Rotavirus vaccines and pathogenesis: 2008. *Curr Opin Gastroenterol*. 2009;25:36–43.
25. Grimwood K, Lambert SB. Rotavirus vaccines: Opportunities and challenges. *Hum Vaccin*. 2009;5:57–69.
26. Goller JL, Dimitriadis A, Tan A, Kelly H, Marshall JA. Long-term features of norovirus gastroenteritis in the elderly. *J Hosp Infect*. 2004;58:286–291.
27. Singh JC, Cruickshank SM, Newton DJ, et al. Toll-like receptor-mediated responses of primary intestinal epithelial cells during the development of colitis. *Am J Physiol Gastrointest Liver Physiol*. 2005;288:G514–G524.
28. Pritt BS, Clark CG. Amebiasis. *Mayo Clin Proc*. 2008;83:1154–1159.
29. Salles JM, Moraes LA, Salles MC. Hepatic amebiasis. *Braz J Infect Dis*. 2003;7:96–110.
30. Viboud C, Alonso WJ, Simonsen L. Influenza in tropical regions. *PLoS Med*. 2006;3:e89.
31. D'Heilly SJ, Janoff EN, Nichol P, Nichol KL. Rapid diagnosis of influenza infection in older adults: Influence on clinical care in a routine clinical setting. *J Clin Virol*. 2008;42:124–128.
32. Jung WW, Chun T, Sul D, et al. Strategies against human papillomavirus infection and cervical cancer. *J Microbiol*. 2004;42:255–266.
33. Osen W, Jochmus I, Muller M, Gissmann L. Immunization against human papillomavirus infection and associated neoplasia. *J Clin Virol*. 2000;19:75–78.
34. Adachi O, Kawai T, Takeda K, et al. Targeted disruption of the MyD88 gene results in loss of IL-1- and IL-18-mediated function. *Immunity*. 1998;9:143–150.
35. Sun L, Deng L, Ea CK, Xia ZP, Chen ZJ. The TRAF6 ubiquitin ligase and TAK1 kinase mediate IKK activation by BCL10 and MALT1 in T lymphocytes. *Mol Cell*. 2004;14:289–301.
36. Keating SE, Maloney GM, Moran EM, Bowie AG. IRAK-2 participates in multiple toll-like receptor signalling pathways to NFkappaB via activation of TRAF6 ubiquitination. *J Biol Chem*. 2007;282:33435–33443.
37. Gururajan M, Jacob J, Pulendran B. Toll-like receptor expression and responsiveness of distinct murine splenic and mucosal B-cell subsets. *PLoS One*. 2007;2:e863.
38. Ray A, Karmakar P, Biswas T. Up-regulation of CD80-CD86 and IgA on mouse peritoneal B-1 cells by porin of Shigella dysenteriae is Toll-like receptors 2 and 6 dependent. *Mol Immunol*. 2004;41:1167–1175.
39. Cario E, Gerken G, Podolsky DK. Toll-like receptor 2 controls mucosal inflammation by regulating epithelial barrier function. *Gastroenterology*. 2007;132:1359–1374.
40. Girardin SE, Tournibize R, Mavris M, et al. CARD4/Nod1 mediates NF-kappaB and JNK activation by invasive Shigella flexneri. *EMBO Rep*. 2001;2:736–742.
41. Snellings NJ, Tall BD, Venkatesan MM. Characterization of Shigella type 1 fimbriae: Expression, FimA sequence, and phase variation. *Infect Immun*. 1997;65:2462–2467.
42. Zhang Y, Chen H, Yang L. Toll-like receptor 4 participates in gastric mucosal protection through Cox-2 and PGE2. *Dig Liver Dis*. 2010;42:472–476.
43. Matharu KS, Mizoguchi E, Cotoner CA, et al. Toll-like receptor 4-mediated regulation of spontaneous Helicobacter-dependent colitis in IL-10-deficient mice. *Gastroenterology*. 2009;137:1380–1390.
44. Shang L, Fukata M, Thirunaryanan N, et al. Toll-like receptor signalling in small intestinal epithelium promotes B-cell recruitment and IgA production in lamina propria. *Gastroenterology*. 2008;135:529–538.
45. Schmausser B, Andrusis M, Endrich S, et al. Expression and subcellular distribution of toll-like receptors TLR4, TLR5 and TLR9 on the gastric epithelium in Helicobacter pylori infection. *Clin Exp Immunol*. 2004;136:521–526.
46. Gewirtz AT, Yu Y, Krishna US, Israel DA, Lyons SL, Peek RM Jr. Helicobacter pylori flagellin evades toll-like receptor 5-mediated innate immunity. *J Infect Dis*. 2004;189:1914–1920.
47. Takenaka R, Yokota K, Ayada K, et al. Helicobacter pylori heat-shock protein 60 induces inflammatory responses through the Toll-like receptor-triggered pathway in cultured human gastric epithelial cells. *Microbiology*. 2004;150(Pt 12):3913–3922.
48. Franchimont D, Vermeire S, El Housni H, et al. Deficient host-bacteria interactions in inflammatory bowel disease? The toll-like receptor (TLR)-4 Asp299 gly polymorphism is associated with Crohn's disease and ulcerative colitis. *Gut*. 2004;53:987–992.
49. Lodes MJ, Cong Y, Elson CO, et al. Bacterial flagellin is a dominant antigen in Crohn disease. *J Clin Invest*. 2004;113:1296–1306.
50. Otte JM, Rosenberg IM, Podolsky DK. Intestinal myofibroblasts in innate immune responses of the intestine. *Gastroenterology*. 2003;124:1866–1878.
51. Maeda S, Hsu LC, Liu H, et al. Nod2 mutation in Crohn's disease potentiates NF-kappaB activity and IL-1beta processing. *Science*. 2005;307:734–738.
52. Maldonado C, Trejo W, Ramirez A, et al. Lipophosphopeptidoglycan of Entamoeba histolytica induces an antiinflammatory innate immune response and downregulation of toll-like receptor 2 (TLR-2) gene expression in human monocytes. *Arch Med Res*. 2000;31(4 Suppl): S71–S73.
53. Maldonado-Bernal C, Kirschning CJ, Rosenstein Y, et al. The innate immune response to Entamoeba histolytica lipopeptidophosphoglycan is mediated by toll-like receptors 2 and 4. *Parasite Immunol*. 2005;27:127–137.
54. Rakoff-Nahoum S, Hao L, Medzhitov R. Role of toll-like receptors in spontaneous commensal-dependent colitis. *Immunity*. 2006;25:319–329.
55. Lembo A, Kalis C, Kirschning CJ, et al. Differential contribution of Toll-like receptors 4 and 2 to the cytokine response to Salmonella enterica serovar Typhimurium and Staphylococcus aureus in mice. *Infect Immun*. 2003;71:6058–6062.
56. Andersen-Nissen E, Smith KD, Strobe KL, et al. Evasion of Toll-like receptor 5 by flagellated bacteria. *Proc Natl Acad Sci U S A*. 2005;102:9247–9252.
57. Vazquez-Torres A, Vallance BA, Bergman MA, et al. Toll-like receptor 4 dependence of innate and adaptive immunity to Salmonella: Importance of the Kupffer cell network. *J Immunol*. 2004;172:6202–6208.
58. Hapfelmeier S, Stecher B, Barthel M, et al. The Salmonella pathogenicity island (SPI)-2 and SPI-1 type III secretion systems allow Salmonella serovar typhimurium to trigger colitis via MyD88-dependent and MyD88-independent mechanisms. *J Immunol*. 2005;174:1675–1685.

59. Huang FC, Werne A, Li Q, Galyov EE, Walker WA, Cherayil BJ. Cooperative interactions between flagellin and SopE2 in the epithelial interleukin-8 response to *Salmonella enterica* serovar typhimurium infection. *Infect Immun*. 2004;72:5052–5062.
60. Raffatellu M, Chessa D, Wilson RP, Dusold R, Rubino S, Baumler AJ. The Vi capsular antigen of *Salmonella enterica* serotype Typhi reduces Toll-like receptor-dependent interleukin-8 expression in the intestinal mucosa. *Infect Immun*. 2005;73:3367–3374.
61. Jerke S, Srinivasan A, McSorley SJ. Expression of Toll/IL-1R domain-containing adaptor protein (TIRAP) is detrimental to primary clearance of *Salmonella* and is not required for the generation of protective immunity. *Immunol Lett*. 2008;116:64–71.
62. Backhed F, Normark S, Schweda EK, Oscarson S, Richter-Dahlfors A. Structural requirements for TLR4-mediated LPS signalling: A biological role for LPS modifications. *Microbes Infect*. 2003;5:1057–1063.
63. Steiner TS, Nataro JP, Poteet-Smith CE, Smith JA, Guerrant RL. Enterogregative *Escherichia coli* expresses a novel flagellin that causes IL-8 release from intestinal epithelial cells. *J Clin Invest*. 2000;105:1769–1777.
64. Hajishengallis G, Tapping RI, Martin MH, et al. Toll-like receptor 2 mediates cellular activation by the B subunits of type II heat-labile enterotoxins. *Infect Immun*. 2005;73:1343–1349.
65. Asai Y, Ohshima Y, Gen K, Ogawa T. Bacterial fimbriae and their peptides activate human gingival epithelial cells through Toll-like receptor 2. *Infect Immun*. 2001;69:7387–7395.
66. Hall JA, Bouladoux N, Sun CM, et al. Commensal DNA limits regulatory T cell conversion and is a natural adjuvant of intestinal immune responses. *Immunity*. 2008;29:637–649.
67. Ikeda T, Hiromatsu K, Hotokezaka M, Chijiwa K. Up-regulation of intestinal toll-like receptors and cytokine expressions change after TPN administration and a lack of enteric feeding. *J Surg Res*. 2010;160:244–252.
68. Tirumurugan KG, Dhanasekaran S, Raj GD, Raja A, Kumaran K, Ramaswamy V. Differential expression of toll-like receptor mRNA in selected tissues of goat (*Capra hircus*). *Vet Immunol Immunopathol*. 2010;133:296–301.
69. Hammerbeck DM, Burleson GR, Schuller CJ, et al. Administration of a dual toll-like receptor 7 and toll-like receptor 8 agonist protects against influenza in rats. *Antiviral Res*. 2007;73:1–11.
70. Hirano T, Kodama S, Moriyama M, Kawano T, Suzuki M. The role of Toll-like receptor 4 in eliciting acquired immune responses against nontypeable *Haemophilus influenzae* following intranasal immunization with outer membrane protein. *Int J Pediatr Otorhinolaryngol*. 2009;73:1657–1665.
71. Yamin M, Holbrook EH, Gray ST, et al. Cigarette smoke combined with Toll-like receptor 3 signalling triggers exaggerated epithelial regulated upon activation, normal T-cell expressed and secreted/CCL5 expression in chronic rhinosinusitis. *J Allergy Clin Immunol*. 2008;122:1145–1153.
72. Tulic MK, Fiset PO, Manoukian JJ, et al. Role of toll-like receptor 4 in protection by bacterial lipopolysaccharide in the nasal mucosa of atopic children but not adults. *Lancet*. 2004;363:1689–1697.
73. Sukkar MB, Xie S, Khorasani NM, et al. Toll-like receptor 2, 3, and 4 expression and function in human airway smooth muscle. *J Allergy Clin Immunol*. 2006;118:641–648.
74. Wang J, Matsukura S, Watanabe S, Adachi M, Suzuki H. Involvement of Toll-like receptors in the immune response of nasal polyp epithelial cells. *Clin Immunol*. 2007;124:345–352.
75. Zhang Z, Bashiruddin JB, Doel C, Horsington J, Durand S, Alexandersen S. Cytokine and Toll-like receptor mRNAs in the nasal-associated lymphoid tissues of cattle during foot-and-mouth disease virus infection. *J Comp Pathol*. 2006;134:56–62.
76. Muir A, Soong G, Sokol S, et al. Toll-like receptors in normal and cystic fibrosis airway epithelial cells. *Am J Respir Cell Mol Biol*. 2004;30:777–783.
77. Pabst R, Durak D, Roos A, Luhrmann A, Tschernig T. TLR2/6 stimulation of the rat lung: Effects on lymphocyte subsets, natural killer cells and dendritic cells in different parts of the air-conducting compartments and at different ages. *Immunology*. 2009;126:132–139.
78. Lane AP, Truong-Tran QA, Schleimer RP. Altered expression of genes associated with innate immunity and inflammation in recalcitrant rhinosinusitis with polyps. *Am J Rhinol*. 2006;20:138–144.
79. Asplin IR, Carl DJ, Way SS, Jones AL. Role of Toll-like receptor 2 in innate resistance to Group B *Streptococcus*. *Microb Pathog*. 2008;44:43–51.
80. Song JJ, Cho JG, Woo JS, Lee HM, Hwang SJ, Chae SW. Differential expression of toll-like receptors 2 and 4 in rat middle ear. *Int J Pediatr Otorhinolaryngol*. 2009;73:821–824.
81. Allam JP, Peng WM, Appel T, et al. Toll-like receptor 4 ligation enforces tolerogenic properties of oral mucosal Langerhans cells. *J Allergy Clin Immunol*. 2008;121:368–374.
82. Ferwerda G, Netea MG, Joosten LA, van der Meer JW, Romani L, Kullberg BJ. The role of Toll-like receptors and C-type lectins for vaccination against *Candida albicans*. *Vaccine*. 2010;28:614–622.
83. John PS, Andrea E, Cecilia E, et al. 586 toll-like receptor 3 (TLR3) signaling improves intestinal mucosal defense against pathogens. *Gastroenterology*. 2009;136:A93–A94.
84. Srinivasan M, Kodumudi KN, Zunt SL. Soluble CD14 and toll-like receptor-2 are potential salivary biomarkers for oral lichen planus and burning mouth syndrome. *Clin Immunol*. 2008;126:31–37.
85. Yuan ZQ, Bennett L, Campo MS, Nasir L. Bovine papillomavirus type 1 E2 and E7 proteins down-regulate toll like receptor 4 (TLR4) expression in equine fibroblasts. *Virus Res*. 2010;149:124–127.
86. Ghosh M, Schaefer TM, Fahey JV, Wright JA, Wira CR. Antiviral responses of human Fallopian tube epithelial cells to toll-like receptor 3 agonist poly(I:C). *Fertil Steril*. 2008;89(5 Suppl):1497–1506.
87. Edelmann KH, Richardson-Burns S, Alexopoulou L, Tyler KL, Flavell RA, Oldstone MB. Does Toll-like receptor 3 play a biological role in virus infections? *Virology*. 2004;322:231–238.
88. Glass RI, Noel J, Ando T, et al. The epidemiology of enteric caliciviruses from humans: A reassessment using new diagnostics. *J Infect Dis*. 2000;181 Suppl 2:S254–S261.
89. Rindsoj E, Holmlund U, Sverremark-Ekstrom E, Papadogiannakis N, Scheynius A. Toll-like receptor-2 expression in normal and pathologic human placenta. *Hum Pathol*. 2007;38:468–473.
90. Vijay-Kumar M, Aitken JD, Carvalho FA, et al. Metabolic syndrome and altered gut microbiota in mice lacking Toll-like receptor 5. *Science*. 2010;328:228–231.
91. Chung SH, Nam KH, Kweon MN. *Staphylococcus aureus* accelerates an experimental allergic conjunctivitis by Toll-like receptor 2-dependent manner. *Clin Immunol*. 2009;131:170–177.
92. Genc MR, Vardhana S, Delaney ML, et al. Relationship between a toll-like receptor-4 gene polymorphism, bacterial vaginosis-related flora and vaginal cytokine responses in pregnant women. *Eur J Obstet Gynecol Reprod Biol*. 2004;116:152–156.
93. Zariffard MR, Harwani S, Novak RM, Graham PJ, Ji X, Spear GT. *Trichomonas vaginalis* infection activates cells through toll-like receptor 4. *Clin Immunol*. 2004;111:103–107.
94. Chamaillard M, Hashimoto M, Horie Y, et al. An essential role for NOD1 in host recognition of bacterial peptidoglycan containing diaminopimelic acid. *Nat Immunol*. 2003;4:702–707.
95. Girardin SE, Boneca IG, Carneiro LA, et al. Nod1 detects a unique muropeptide from gram-negative bacterial peptidoglycan. *Science*. 2003;300:1584–1587.
96. Kobayashi K, Inohara N, Hernandez LD, et al. RICK/Rip2/CARDIAK mediates signalling for receptors of the innate and adaptive immune systems. *Nature*. 2002;416:194–199.
97. Inohara N, Koseki T, Lin J, et al. An induced proximity model for NF-kappa B activation in the Nod1/RICK and RIP signalling pathways. *J Biol Chem*. 2000;275:27823–27831.
98. Kobayashi KS, Chamaillard M, Ogura Y, et al. Nod2-dependent regulation of innate and adaptive immunity in the intestinal tract. *Science*. 2005;307:731–734.
99. Ogura Y, Bonen DK, Inohara N, et al. A frameshift mutation in NOD2 associated with susceptibility to Crohn's disease. *Nature*. 2001;411:603–606.

100. Hysi P, Kabesch M, Moffatt MF, et al. NOD1 variation, immunoglobulin E and asthma. *Hum Mol Genet.* 2005;14:935–941.
101. Eckmann L. Sensor molecules in intestinal innate immunity against bacterial infections. *Curr Opin Gastroenterol.* 2006;22:95–101.
102. Tohno M, Ueda W, Azuma Y, et al. Molecular cloning and functional characterization of porcine nucleotide-binding oligomerization domain-2 (NOD2). *Mol Immunol.* 2008;45:194–203.
103. Luciano F, Krajewska M, Ortiz-Rubio P, et al. Nur77 converts phenotype of Bcl-B, an antiapoptotic protein expressed in plasma cells and myeloma. *Blood.* 2007;109:3849–3855.
104. Boyden ED, Dietrich WF. Nalp1b controls mouse macrophage susceptibility to anthrax lethal toxin. *Nat Genet.* 2006;38:240–244.
105. Martinon F, Petrilli V, Mayor A, Tardivel A, Tschopp J. Gout-associated uric acid crystals activate the NALP3 inflammasome. *Nature.* 2006;440:237–241.
106. Yoneyama M, Fujita T. Function of RIG-I-like receptors in antiviral innate immunity. *J Biol Chem.* 2007;282:15315–15318.
107. Kato H, Sato S, Yoneyama M, et al. Cell type-specific involvement of RIG-I in antiviral response. *Immunity.* 2005;23:19–28.
108. Kawai T, Takahashi K, Sato S, et al. IPS-1, an adaptor triggering RIG-I- and Mda5-mediated type I interferon induction. *Nat Immunol.* 2005;6:981–988.
109. Saha SK, Pietras EM, He JQ, et al. Regulation of antiviral responses by a direct and specific interaction between TRAF3 and Cardif. *EMBO J.* 2006;25:3257–3263.
110. Sasai M, Shingai M, Funami K, et al. NAK-associated protein 1 participates in both the TLR3 and the cytoplasmic pathways in type I IFN induction. *J Immunol.* 2006;177:8676–8683.
111. Yoneyama M, Kikuchi M, Matsumoto K, et al. Shared and unique functions of the DExD/H-box helicases RIG-I, MDA5, and LGP2 in antiviral innate immunity. *J Immunol.* 2005;175:2851–2858.
112. Wang X, Li M, Zheng H, et al. Influenza A virus NS1 protein prevents activation of NF-kappaB and induction of alpha/beta interferon. *J Virol.* 2000;74:11566–11573.
113. Wang Y, Zhang HX, Sun YP, et al. RIG-I^{-/-} mice develop colitis associated with downregulation of G alpha i2. *Cell Res.* 2007;17:858–868.
114. Rohrl J, Yang D, Oppenheim JJ, Hehlhans T. Specific binding and chemotactic activity of mBD4 and its functional orthologue hBD2 to CCR6-expressing cells. *J Biol Chem.* 2010;285:7028–7034.
115. Bachman MA, Miller VL, Weiser JN. Mucosal lipocalin 2 has pro-inflammatory and iron-sequestering effects in response to bacterial enterobactin. *PLoS Pathog.* 2009;5:e1000622.
116. Schaubert J, Gallo RL. Antimicrobial peptides and the skin immune defense system. *J Allergy Clin Immunol.* 2008;122:261–266.
117. Guo X, Rosa AJ, Chen DG, Wang X. Molecular mechanisms of primary and secondary mucosal immunity using avian infectious bronchitis virus as a model system. *Vet Immunol Immunopathol.* 2008;121:332–343.
118. Bevins CL, Martin-Porter E, Ganz T. Defensins and innate host defence of the gastrointestinal tract. *Gut.* 1999;45:911–915.
119. Skwor TA, Atik B, Kandel RP, Adhikari HK, Sharma B, Dean D. Role of secreted conjunctival mucosal cytokine and chemokine proteins in different stages of trachomatous disease. *PLoS Negl Trop Dis.* 2008;2:e264.
120. Zhaori G, Sun M, Ogra PL. Characteristics of the immune response to poliovirus virion polypeptides after immunization with live or inactivated polio vaccines. *J Infect Dis.* 1988;158:160–165.
121. Wu HY, Weiner HL. Oral tolerance. *Immunol Res.* 2003;28:265–284.

International Journal of General Medicine

Publish your work in this journal

The International Journal of General Medicine is an international, peer-reviewed open-access journal that focuses on general and internal medicine, pathogenesis, epidemiology, diagnosis, monitoring and treatment protocols. The journal is characterized by the rapid reporting of reviews, original research and clinical studies across all disease areas.

Submit your manuscript here: <http://www.dovepress.com/international-journal-of-general-medicine-journal>

Dovepress

A key focus is the elucidation of disease processes and management protocols resulting in improved outcomes for the patient. The manuscript management system is completely online and includes a very quick and fair peer-review system. Visit <http://www.dovepress.com/testimonials.php> to read real quotes from published authors.