

# Survival of Patients with Hepatitis B-Related Hepatocellular Carcinoma with Concomitant Metabolic Associated Fatty Liver Disease

Yajing You<sup>1,\*</sup>, Tao Yang<sup>2,\*</sup>, Shuhang Wei<sup>1</sup>, Zongxin Liu<sup>1</sup>, Chenxi Liu<sup>1</sup>, Zijian Shen<sup>3</sup>, Yinuo Yang<sup>1</sup>, Yuemin Feng<sup>1</sup>, Ping Yao<sup>2</sup>, Qiang Zhu<sup>1,2</sup>

<sup>1</sup>Department of Gastroenterology, Shandong Provincial Hospital, Shandong University, Jinan, Shandong, 250021, People's Republic of China;

<sup>2</sup>Department of Gastroenterology, The First Affiliated Hospital of Xinjiang Medical University, Urumqi, Xinjiang Uygur Autonomous Region, 830000, People's Republic of China; <sup>3</sup>Department of Radiology, Shandong Provincial Hospital, Affiliated to Shandong First Medical University, Jinan, Shandong, 250021, People's Republic of China

\*These authors contributed equally to this work

Correspondence: Qiang Zhu, Department of Gastroenterology, The First Affiliated Hospital of Xinjiang Medical University, Urumqi, Xinjiang Uygur Autonomous Region, 830000, People's Republic of China, Email [zhuqiang@sdu.edu.cn](mailto:zhuqiang@sdu.edu.cn); Ping Yao, Department of Gastroenterology, The First Affiliated Hospital of Xinjiang Medical University, Urumqi, Xinjiang Uygur Autonomous Region, 830000, People's Republic of China, Email [pingyaozh@sina.com](mailto:pingyaozh@sina.com)

**Purpose:** Metabolic associated fatty liver disease is a novel concept defined as fatty liver associated with metabolic disorders. We investigated the effect of metabolic associated fatty liver disease on hepatocellular carcinoma patient mortality.

**Patients and Methods:** A total of 624 patients with hepatocellular carcinoma between 2012 and 2020 were enrolled in this retrospective study. Hepatic steatosis was diagnosed using computed tomography or magnetic resonance imaging. Metabolic associated fatty liver disease was defined based on the proposed criteria in 2020. Propensity score matching was performed for patients with metabolic associated fatty liver disease and those without the condition. A Cox proportional hazards regression model was used to evaluate the association between metabolic associated fatty liver disease and hepatocellular carcinoma patient outcomes.

**Results:** Patients with hepatocellular carcinoma and metabolic associated fatty liver disease tended to achieve better outcomes than did those without metabolic associated fatty liver disease after matching ( $p < 0.001$ ). Metabolic associated fatty liver disease was significantly associated with better prognosis in patients with concurrent hepatitis B infection ( $p < 0.001$ ). Moreover, high levels of hepatitis B viral DNA in serum samples was associated with a significantly increased risk of death in patients without non-metabolic associated fatty liver disease ( $p = 0.045$ ). Additionally, the association between metabolic associated fatty liver disease and survival in hepatitis B virus-related hepatocellular carcinoma was similar in all subgroups based on metabolic traits.

**Conclusion:** Metabolic associated fatty liver disease increases the survival rate of patients with hepatocellular carcinoma and hepatitis B virus infection. The potential interaction of steatosis and virus replication should be considered for future research and clinical treatment strategies.

**Keywords:** steatosis, diabetes, obesity, HBe Ag

## Plain Language Summary

The current study explores the association between metabolic associated fatty liver disease (MAFLD) and chronic hepatitis B-related hepatocellular carcinoma (HBV-HCC) in terms of the prognosis. It shows that HBV-related HCC patients with MAFLD have a better outcome than those without MAFLD. Risk factors for HCC, such as positive HBeAg (Hepatitis B e-antigen), high load of HBV DNA, and metabolic traits, do not have a significant effect on the MAFLD group. A novel finding was that patients with MAFLD achieved better survival among HCC patients with hepatitis B infection, which may be due to the interaction between steatosis and virus replication. Drawing on discoveries in the interaction between MAFLD and HBV-HCC, we propose that further patient stratification is necessary for MAFLD group, considering the heterogeneous nature of MAFLD and the complex pathogenesis of HBV.

## Introduction

Metabolic associated fatty liver disease (MAFLD) is a novel concept proposed by an international consensus in 2020, defined as hepatic steatosis with diabetes, obesity, or at least two metabolic abnormalities.<sup>1</sup> Considering the increasing incidence of metabolic disorders, MAFLD has been associated with the development of various cancers.<sup>2,3</sup> Hepatocellular carcinoma (HCC), the predominant primary malignancy of the liver, is one of the leading causes of mortality in patients with cancer.<sup>4,5</sup> However, as MAFLD criteria have recently been developed based on consensus, there are limited data regarding the characteristics of patients with MAFLD-HCC, especially in Asians.

The higher incidence of HCC in Asia than in other regions of the world is still related to predominance of chronic hepatitis B (CHB).<sup>6,7</sup> Unfortunately, the previous term NAFLD was defined as the exclusion of other chronic liver diseases, making it harder to focus on metabolic disorders in CHB patients.<sup>8</sup> Thus, the new MAFLD definition makes its coexistence with CHB possible. Accompanied by the rapid increase in the prevalence of metabolic disorders, the coexistence of metabolic syndrome and CHB is commonly observed.<sup>9–11</sup> In hepatitis B virus (HBV) carriers, metabolic factors such as obesity and diabetes are well-established risk factors for HCC; however, hepatitis steatosis is found to be associated with a lower incidence of HCC.<sup>12</sup> Thus, owing to the combined effects of these metabolic factors, MAFLD represents a complex multisystem disorder, and the impact of MAFLD on the clinical outcomes of CHB-HCC patients remains unknown.

As such, we performed a retrospective analysis to investigate the effect of MAFLD on the long-term survival of patients with HCC. We also explore the association between MAFLD and CHB-related HCC in terms of the prognosis.

## Materials and Methods

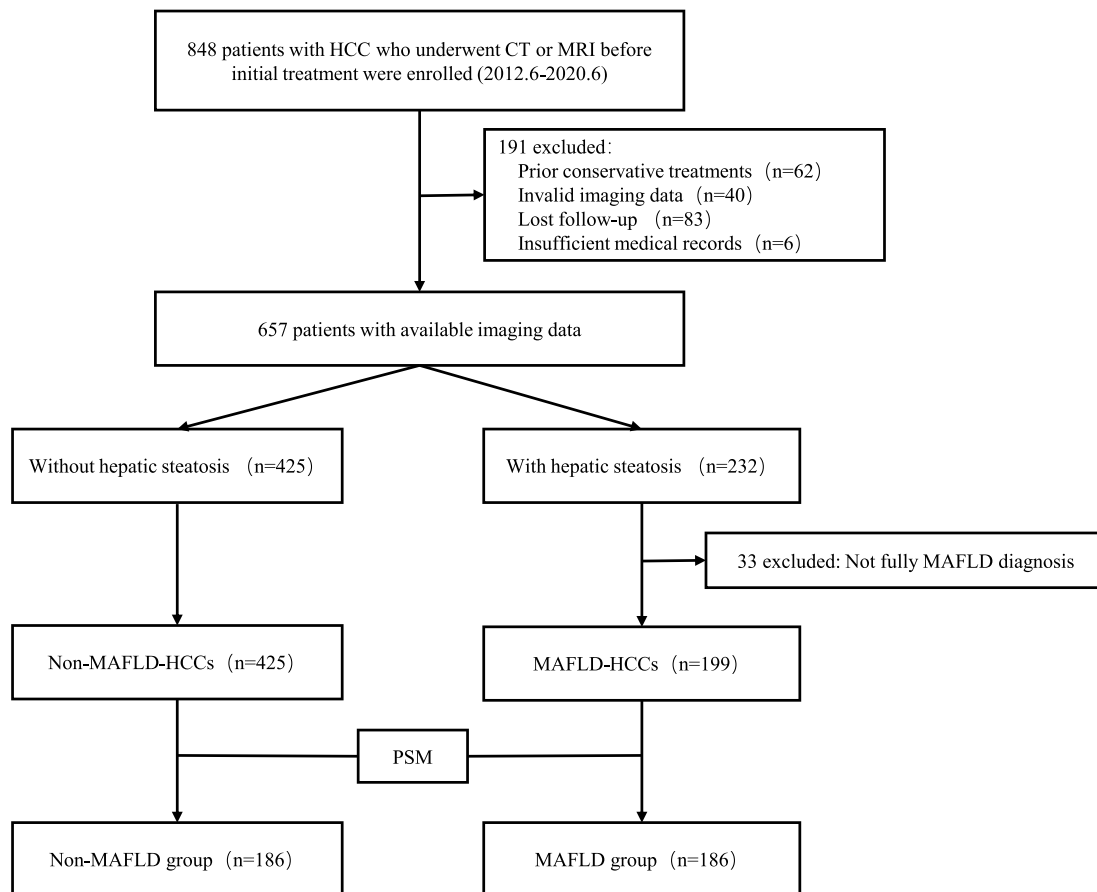
### Patients

The study included a total of 848 patients with HCC who were admitted to Shandong Provincial Hospital Affiliated with Shandong First Medical University, Shandong, China, between June 2012 and June 2020. Patients underwent computed tomography (CT) or magnetic resonance imaging (MRI) before initial treatment. Patients were identified according to the following inclusion criteria: (1) Age  $\geq 18$  years; (2) Initial diagnosis of HCC confirmed by histopathology and radiographic evaluation; (3) Available imaging data for the assessment of hepatic steatosis; and (4) No other malignant neoplasms within the last 5 years. The exclusion criteria were as follows: (1) Patients with HCC who underwent transcatheter arterial chemoembolization or other conservative treatments; (2) Patients with hepatic steatosis with lacking body mass index (BMI) information; or (3) Patients without any MAFLD inclusion criteria. A total of 624 patients were enrolled, including 199 with MAFLD and 425 without MAFLD (Figure 1). This study was approved by the institutional review board of Shandong Provincial hospital, and the requirement for informed patient consent was waived due to the retrospective nature of the study.

### Diagnosis of Liver Disease

MAFLD cases were defined as radiologically diagnosed hepatic steatosis in combination with at least one of the following characteristics: (1) Overweight (BMI  $\geq 23$  kg/m<sup>2</sup> for Asians); (2) Type 2 diabetes mellitus; and (3) Evidence of metabolic dysregulation. Metabolic dysregulation was defined by the presence of two or more of the following metabolic abnormalities: (1) Blood pressure  $\geq 130/85$  mmHg or specific drug treatment; (2) Plasma triglycerides  $\geq 1.70$  mmol/L or drug treatment; (3) Plasma HDL-C  $< 1.0$  mmol/L for men and  $< 1.3$  mmol/L for women; and (4) Prediabetes (ie, fasting glucose levels 5.6 to 6.9 mmol/L, or 2-hour post-load glucose levels 7.8 to 11.0 mmol or HbA1c 5.7% to 6.4%). Three additional proposed criteria (waist circumference, high-sensitivity C-reactive protein level, and homeostasis model assessment index) were not available for this cohort.

To evaluate steatosis, a clinical CT-MRI linear conversion formula was used.<sup>13</sup> Quantification of liver fat content using MRI was based on the two-point Dixon method.<sup>14</sup> Other etiologies of HCC, including HBV infection, hepatitis C virus (HCV) infection, and alcohol use, were defined according to generally agreed criteria. HCC staging was assessed



**Figure 1** Patient flow diagram.

**Abbreviations:** CT, computed tomography; HCC, hepatocellular carcinoma; MAFLD, metabolic dysfunction-associated fatty liver disease; MRI, magnetic resonance imaging; PSM, propensity score matching.

using the Barcelona Clinic Liver Cancer (BCLC) and China Liver Cancer (CNLC) staging systems.<sup>15,16</sup> The severity of liver cirrhosis was assessed using the Child-Pugh score and model for end-stage liver disease (MELD) score.<sup>17,18</sup>

## Follow-Up and Outcomes

The prognostic information for patients was obtained from regular follow-ups every 3-months during the 1st year and 3–6 months thereafter. Disease recurrence was identified using radiological detection. The outcome of this study was overall survival (OS), calculated from the date of first treatment to the date of death related to any cause or the date of the last follow-up.

## Statistical Analysis

R (version 4.1.3) and SPSS 26.0 statistical packages were used for data analyses in this study. Continuous data were presented as median with interquartile range. Categorical variables were presented as counts and percentages. Differences in categorical variables were compared using the Pearson's chi-squared test or Fisher's exact test, and continuous data were analyzed using the Mann–Whitney *U*-test.

Propensity score matching (PSM) was used to reduce the influence of confounding factors and selection bias. A total of 372 patients were enrolled after 1:1 matching with caliper distance (0.02), including age, sex, cirrhosis, etiology (HBV, HCV, and cryptogenic), tumor characteristics (histopathology, metastasis, and tumor size), initial therapy, and MELD score.

Survival curves were generated using the Kaplan-Meier method and estimated using a Log rank test. Univariate and multivariate Cox proportional hazard models were used to analyze the prognostic factors and were constructed using a forward stepwise approach. All reported  $p$  values were two-sided, and  $p$  values  $< 0.05$  were considered significant.

## Results

### Baseline Characteristics

Among the 624 participants, the median age was 57.0 (49.3–64.0) years, and 83.3% of patients were male. The most common cause of HCC was chronic HBV infection (83.8%). Cirrhosis was present in 85.1% of patients. The BMI ( $p < 0.001$ ) and proportion of hypertension ( $p = 0.003$ ) were higher in the MAFLD group than in the non-MAFLD group. Patients with non-MAFLD-HCC were more frequently treated with liver resection ( $p = 0.008$ ), had a higher incidence of HBV infection ( $p = 0.006$ ), and had higher MELD scores ( $p = 0.040$ ). After PSM, all matching variables were balanced, and 186 patients in each group were included in the analysis (Table 1).

**Table 1** Baseline Characteristics of Total Cohort and PSM Cohort

	Total Cohort			PSM Cohort		
	MAFLD (n=199)	Non-MAFLD (n=425)	$p$ value	MAFLD (n=186)	Non-MAFLD (n=186)	$p$ value
Age (years) <sup>+</sup>	57.0 (48.0–63.5)	56.0 (49.0–63.0)	0.431	56.5 (48.0–63.8)	57.0 (50.0–64.0)	0.876
Gender (male)	163 (81.9)	357 (84.0)	0.514	153 (82.3)	147 (79.0)	0.431
BMI (kg/m <sup>2</sup> ) <sup>+</sup>	25.7 (24.1–28.0)	24.8 (23.1–26.9)	<b>0.000</b>	25.7 (24.0–28.0)	24.9 (23.2–27.1)	<b>0.000</b>
Type 2 diabetes	36 (18.1)	70 (16.5)	0.616	32 (17.2)	39 (21.0)	0.356
Hypertension	73 (36.7)	107 (25.2)	<b>0.003</b>	68 (36.6)	42 (22.6)	<b>0.003</b>
Liver cirrhosis	165 (82.9)	366 (86.1)	0.295	158 (84.9)	158 (84.9)	1.000
HBV	155 (77.9)	368 (86.6)	<b>0.006</b>	150 (80.6)	149 (80.1)	0.896
Alcohol	53 (26.6)	106 (24.9)	0.651	52 (28.0)	47 (25.3)	0.557
ECOG PS (>0)	45 (22.6)	94 (22.1)	0.890	41 (22.0)	45 (24.2)	0.623
AFP (>1000 ng/mL)	37 (19.1)	81 (19.6)	0.886	37 (20.3)	42 (23.0)	0.543
Histopathology			0.426			0.310
Well	17 (9.9)	28 (7.0)		17 (10.3)	10 (5.7)	
Moderate	120 (70.2)	297 (74.4)		115 (69.7)	128 (73.1)	
Poor	34 (19.9)	74 (18.6)		33 (20.0)	37 (21.1)	
Tumor number (>1)	32 (16.2)	69 (16.2)	0.981	32 (17.2)	29 (15.6)	0.674
Tumor size (cm) <sup>+</sup>	3.8 (2.6–6.3)	4.0 (2.7–6.9)	0.184	3.9 (2.6–6.4)	4.5 (2.7–7.0)	0.066
Microvascular invasion	42 (21.2)	94 (22.2)	0.788	42 (22.6)	52 (28.0)	0.233
Metastases	9 (4.5)	36 (8.5)	0.077	9 (4.8)	16 (8.6)	0.213
Satellite nodules	21 (10.6)	50 (11.8)	0.665	21 (11.3)	22 (11.8)	0.871
Child B and C	18 (9.1)	28 (6.6)	0.273	17 (9.1)	18 (9.7)	0.859
MELD <sup>+</sup>	7.0 (7.0–8.0)	8.0 (7.0–9.0)	<b>0.040</b>	7.0 (7.0–8.0)	8.0 (7.0–9.0)	0.089
BCLC			0.875			0.772
0	14 (7.2)	23 (5.4)		10 (5.4)	12 (6.5)	
A	38 (19.6)	77 (18.2)		37 (19.9)	32 (17.2)	
B	89 (45.9)	197 (46.6)		87 (46.8)	80 (43.0)	
C	50 (25.8)	119 (28.1)		49 (26.3)	59 (31.7)	
D	3 (1.5)	7 (1.7)		3 (1.6)	3 (1.6)	
CNLC			0.983			0.762
I	130 (67.0)	278 (65.9)		122 (65.6)	113 (60.8)	
II	13 (6.7)	27 (6.4)		13 (7.0)	13 (7.0)	
III	48 (24.7)	110 (26.0)		48 (25.8)	57 (30.6)	
IV	3 (1.6)	7 (1.6)		3 (1.6)	3 (1.6)	

(Continued)

Table 1 (Continued).

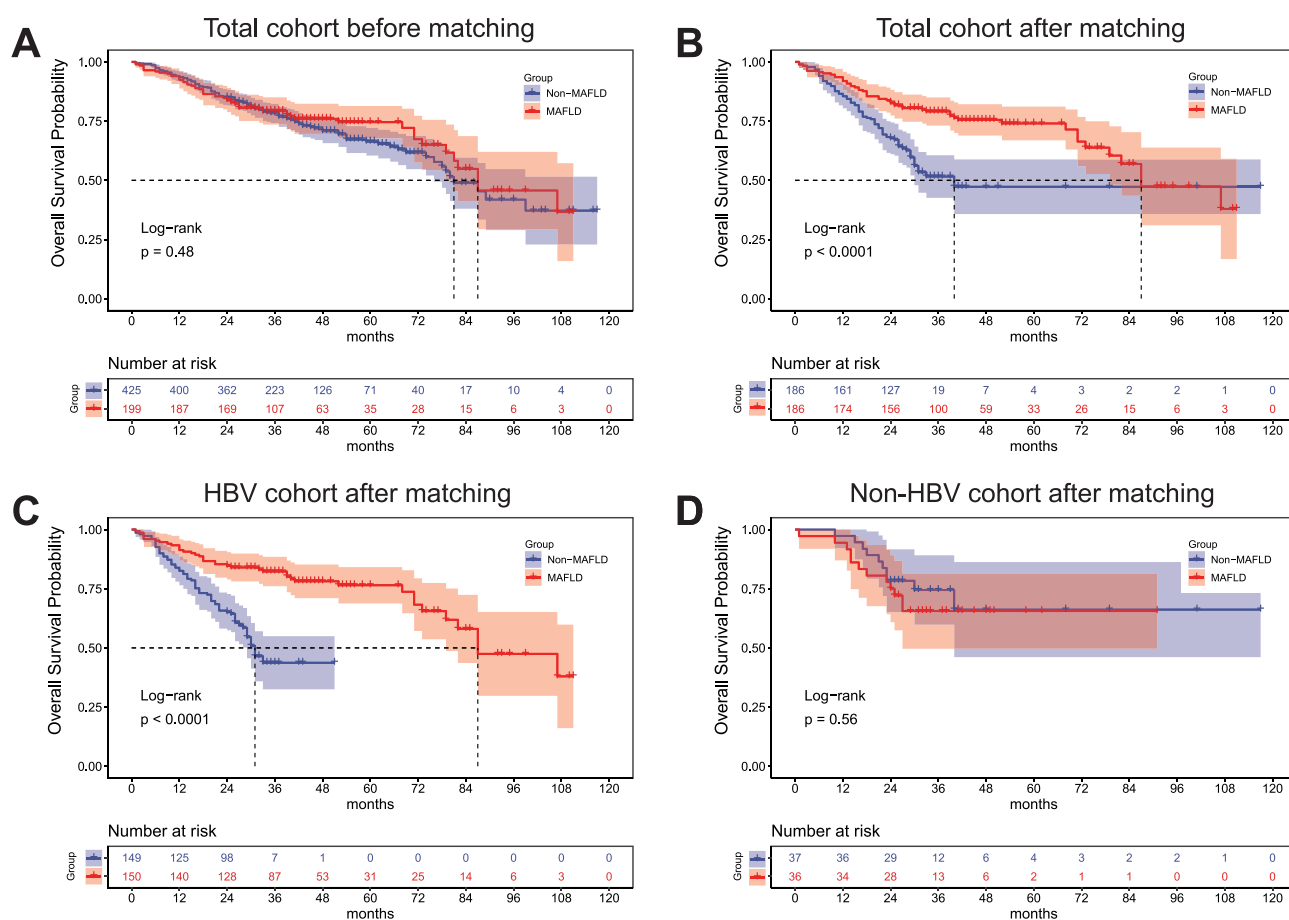
	Total Cohort			PSM Cohort		
	MAFLD (n=199)	Non-MAFLD (n=425)	p value	MAFLD (n=186)	Non-MAFLD (n=186)	p value
Initial therapy			<b>0.008</b>			0.587
Liver resection	112 (56.3)	281 (66.1)		111 (59.7)	103 (55.4)	
Laparoscopic resection	61 (30.7)	120 (28.2)		56 (30.1)	69 (37.1)	
Others	26 (13.0)	24 (5.7)		19 (10.2)	14 (7.5)	
HBeAg positive	43 (21.6)	95 (22.6)	0.789	40 (21.5)	35 (18.8)	0.518
HBV DNA (log <sub>10</sub> IU/mL)*	2.8 (1.8–4.9)	3.0 (1.6–4.8)	0.777	2.8 (1.9–4.9)	2.3 (1.4–3.9)	0.078

**Notes:** \*Data are medians, with interquartile ranges in parentheses. *p* value of < 0.05 was considered statistically significant and shown in bold values. Except where indicated, Data are numbers of patients, with percentages in parentheses.

**Abbreviations:** AFP, alpha fetoprotein; ALBI, albumin-bilirubin grade; BCLC, Barcelona Clinic Liver Cancer staging system; BMI, Body mass index; Child B and C, Child-Pugh class B and C; CNLC, China liver cancer staging system; ECOG PS, Eastern Cooperative Oncology Group performance status; HBV, hepatitis B virus; HCV, hepatitis C virus; HBeAg, hepatitis B e antigen; HCC, hepatocellular carcinoma; MELD, model for end-stage liver disease; MAFLD, metabolic dysfunction-associated fatty liver disease; PSM, propensity score matching; SMD, standardized mean difference.

## Outcomes in HCC Patients

In the total cohort, the median follow-up was 87 months (95% CI 80.2–93.8), and the median OS between patients with and without MAFLD was not significantly different (*p* = 0.48) (Figure 2A). After PSM, the median OS were 87 and 40 months in the MAFLD and non-MAFLD groups, respectively (*p* < 0.001) (Figure 2B). For patients with CHB, the



**Figure 2** (A) OS before matching. (B) OS after matching. (C) OS in patients with hepatitis B after matching. (D) OS in patients without hepatitis B after matching. **Abbreviations:** HCC, hepatocellular carcinoma; MAFLD, metabolic dysfunction-associated fatty liver disease; OS, overall survival.

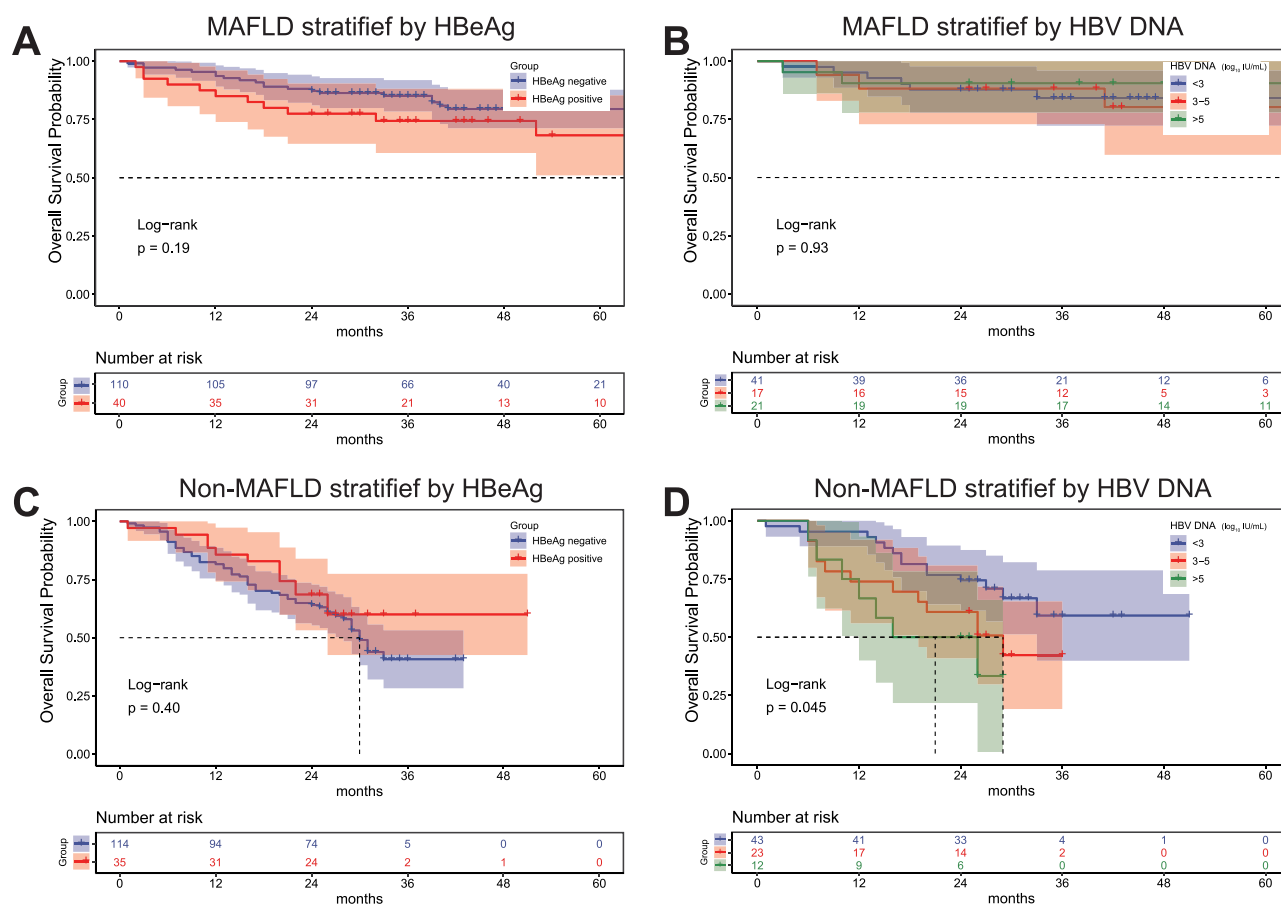
median OS was significantly lower in the non-MAFLD (31 months) than in the MAFLD group (87 months) ( $p < 0.001$ ) (Figure 2C). For patients without HBV infection, the median OS was not significantly different between the MAFLD and non-MAFLD groups ( $p = 0.56$ ) (Figure 2D).

## Outcomes in MAFLD and Non-MAFLD Patients

For CHB-HCC patients in the PSM cohort, the median OS of the MAFLD group was not significantly different between the hepatitis B e-antigen (HBeAg)-positive and HBeAg-negative groups ( $p = 0.19$ ) (Figure 3A). A similar result was found among non-MAFLD individuals ( $p = 0.40$ ) (Figure 3B). Moreover, the outcome of patients with MAFLD was not influenced by the serum HBV DNA level ( $p = 0.93$ ), which was shown to be an important risk factor for non-MAFLD participants ( $p = 0.045$ ) (Figure 3C and D).

## Risk Factors for Outcomes of Patients with Hepatitis B

For patients with CHB after matching, the univariate analysis in Table 2 showed that Eastern Cooperative Oncology Group (ECOG), alpha fetoprotein (AFP), liver function reserve (Child–Pugh), and tumor characteristics (histopathology, tumor size, microvascular invasion, metastasis, and satellite nodules) were significant factors for poor OS, as expected. MAFLD ( $p < 0.001$ ) and higher BMI ( $p = 0.006$ ) were associated with a significantly lower risk of mortality, which was also confirmed in the multivariate analysis. Three risk factors identified in the univariate analysis (ECOG performance status, tumor size, and microvascular invasion) remained significant in the multivariate analysis.



**Figure 3** (A) Patients with MAFLD stratified by HBeAg status. (B) Patients with MAFLD stratified by HBV DNA levels. (C) Patients with non-MAFLD stratified by HBeAg status. (D) Patients with non-MAFLD stratified by HBV DNA levels.

**Abbreviations:** CHB, chronic hepatitis B; HCC, hepatocellular carcinoma; MAFLD, metabolic dysfunction-associated fatty liver disease; HBeAg, hepatitis B e-antigen; HBV, hepatitis B virus.

**Table 2** Prognostic Factor Analysis for Overall Survival in CHB-HCC Patients

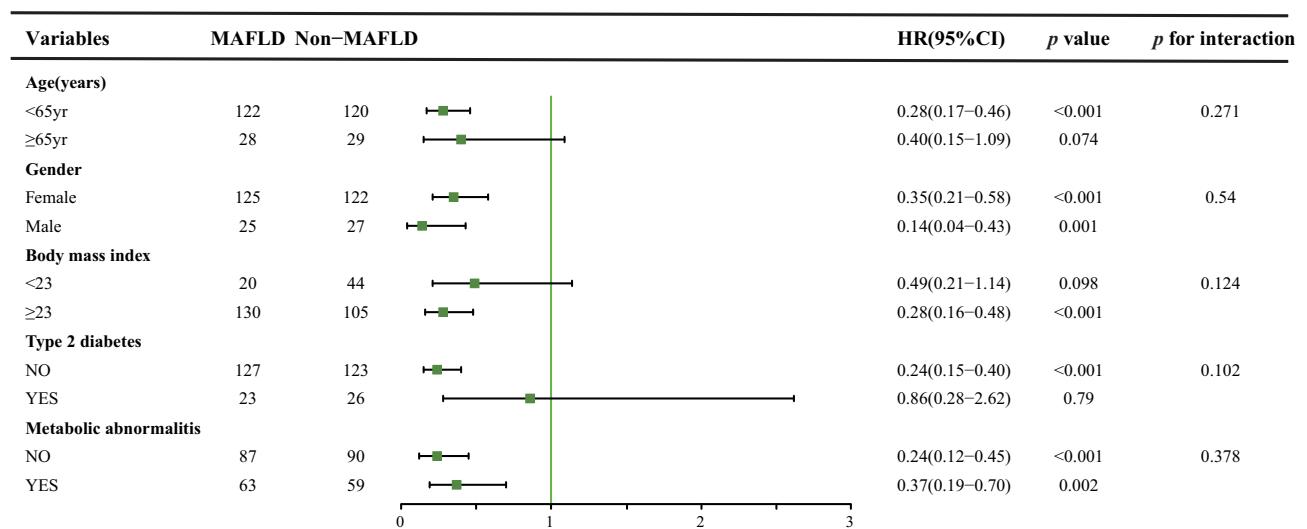
Variables	Overall Survival			
	Univariate Analysis		Multivariate Analysis	
	HR (95% CI)	p value	HR (95% CI)	p value
Age (years)	1.00 (0.98–1.02)	0.903		
Gender (male)	0.75 (0.48–1.19)	0.219		
MAFLD	0.29 (0.19–0.46)	<b>0.000</b>	0.36 (0.22–0.57)	<b>0.000</b>
BMI	0.89 (0.83–0.94)	<b>0.000</b>	0.91 (0.86–0.97)	<b>0.006</b>
Type 2 diabetes	0.80 (0.45–1.44)	0.464		
Hypertension	0.69 (0.43–1.10)	0.118		
Liver cirrhosis	0.79 (0.48–1.31)	0.358		
ECOG PS (>0)	2.01 (1.35–2.99)	<b>0.001</b>	2.13 (1.40–3.24)	<b>0.000</b>
Alcohol	1.32 (0.88–1.97)	0.186		
AFP (>1000 ng/mL)	1.77 (1.17–2.68)	<b>0.007</b>	0.81 (0.50–1.32)	0.398
Child B and C	2.60 (1.54–4.38)	<b>0.000</b>	1.58 (0.87–2.88)	0.133
Histological grade		<b>0.041</b>		0.193
Well	(ref)		(ref)	
Moderate	2.43 (0.76–7.76)	0.133	1.91 (0.46–7.94)	0.372
Poor	3.77 (1.13–12.61)	0.031	2.76 (0.63–12.00)	0.177
Tumor number (>1)	1.42 (0.90–2.26)	0.136		
Tumor size	1.15 (1.09–1.21)	<b>0.000</b>	1.06 (1.00–1.13)	<b>0.048</b>
Microvascular invasion	3.95 (2.67–5.83)	<b>0.000</b>	3.01 (1.96–4.64)	<b>0.000</b>
Metastases	2.33 (1.27–4.25)	<b>0.006</b>	0.96 (0.48–1.93)	0.911
Satellite nodules	2.05 (1.26–3.35)	<b>0.004</b>	1.19 (0.69–2.03)	0.538

**Note:** p value of < 0.05 was considered statistically significant and shown in bold values.

**Abbreviations:** AFP, alpha fetoprotein; BMI, Body mass index; Child B and C, Child-Pugh class B and C; CI, confidence interval; ECOG PS, Eastern Cooperative Oncology Group performance status; HR, hazard ratio; HBsAg, Hepatitis B surface antigen; MAFLD, metabolic dysfunction-associated fatty liver disease.

## Subgroup Analyses

The study was stratified according to the types of metabolic traits (BMI, type 2 diabetes mellitus, and metabolic abnormalities proposed in the MAFLD criteria), and the outcome of patients with CHB-HCC was observed. As shown in [Figure 4](#), clinical



**Figure 4** Subgroup analyses by two groups of non-MAFLD and MAFLD after matching.

**Abbreviations:** HR, hazard ratio; MAFLD, metabolic associated fatty liver disease.



outcomes were significantly better in the MAFLD group, whereas the interaction effects between survival and metabolic traits were not statistically significant.

## Discussion

Our analyses showed that among patients with CHB-HCC, those with MAFLD experienced better long-term outcomes than did those without MAFLD. In addition, multivariate analysis indicated that MAFLD was an independent favorable prognostic factor for patients with CHB-HCC; moreover, the subgroup analyses defined by metabolic characteristics further confirmed these findings. Whilst the association between MAFLD and HCC has been explored in a few studies,<sup>19,20</sup> the potential effect of MAFLD in patients with HCC with coexisting other etiologies remains largely unknown. The new definition of MAFLD has been endorsed and supported by the Chinese Society of Hepatology (CSH), and a large proportion of HCC patients in China has CHB as an etiology. With the increasing prevalence of MAFLD, it is relevant to explore the underlying interactions between MAFLD and CHB in HCC patients.<sup>21</sup> To our knowledge, this is the first study wherein liver steatosis has been evaluated by quantitative imaging methods for the diagnosis of MAFLD to investigate the potential synergism between MAFLD and CHB in HCC progression.

Unlike the previous definition of NAFLD, exclusion of other etiologies, such as alcohol and viral infections, is not a prerequisite for the diagnosis of MAFLD.<sup>22</sup> The epidemiological features of the HCC population in our study indicate that the incidence of MAFLD is increasing with concomitant HBV infection ([Supplementary Figure 1](#)). Furthermore, while the subclassification of MAFLD has not been completed,<sup>1</sup> our evidence highlights the importance of this new criterion in individuals with HBV-related HCC.

Substantial epidemiological evidence indicates that being overweight is associated with an increased risk of HCC.<sup>23</sup> Moreover, a recent meta-analysis demonstrated that overweight or obese is associated with higher all-cause mortality than is normal body weight.<sup>24</sup> Conversely, we found a significantly lower risk of death in patients with HCC with a higher BMI ( $\geq 23$  kg/m<sup>2</sup>). Controversial data have also been generated from NAFLD studies. Patients with lean NAFLD (BMI  $< 23$  kg/m<sup>2</sup>) are at a higher risk of developing severe liver disease and worse outcomes, despite having a better histological and metabolic profile.<sup>19,25</sup> However, our stratified analyses determined that both lean and overweight patients with MAFLD achieved a significant improvement in the clinical outcome of HCC. The main reason could be the heterogeneity of MAFLD influenced by multiple factors including age, sex, surveillance, alcohol intake, viral infection, and metabolic status.<sup>26–31</sup> The clinical course of HCC is based on the balance of these diverse inputs. To reduce selection bias and the effect of baseline differences, strict PSM and multivariate analyses were performed. The results showed that the protective effect of MAFLD on HCC patient survival is independent of tumor characteristics and obesity. Nevertheless, the expected prognostic advantage of MAFLD might be counterbalanced by other causes in the total cohort, such as different treatment options, more aggressive tumor phenotypes, and worse health status of patients.<sup>20</sup>

Hepatic steatosis, defined as the abnormal accumulation of triglycerides within hepatocytes, is correlated with the progression of inflammation, fibrosis, and carcinogenesis.<sup>32,33</sup> Although liver biopsy is a reference standard, non-invasive quantification of liver fat is now possible due to advances in imaging modalities conducted to evaluate the fat content in MAFLD participants.<sup>34–36</sup> However, our results suggest that hepatic steatosis may not be an important factor for MAFLD-HCC patient outcomes ([Supplementary Figure 2A and B](#)). One potential reason is that 84.9% of the patients were classified as having mild steatosis, while the proportion of those with moderate to severe fatty liver was lower. Another possibility is that viral infections and cirrhosis status might confer a protective effect on steatosis, which remains controversial in clinical practice.<sup>37–39</sup>

HBV infection remains a global public health problem and plays a pivotal role in hepatocarcinogenesis.<sup>40</sup> According to the updated Clinical Practice Guideline,<sup>41</sup> HBeAg is essential for immune tolerance in patients with CHB, and positive serum HBeAg is associated with poor outcomes in HCC.<sup>42</sup> However, in the MAFLD and non-MAFLD groups, no differences in survival were detected between HBeAg-positive and HBeAg-negative patients in our study. A previous study has verified that an increasing risk of HCC seen in HBeAg seropositive cases might be due to higher HBV DNA viral loads rather than the effect of HBeAg status.<sup>43</sup> Interestingly, higher HBV DNA levels were significantly correlated with unfavorable outcomes in non-MAFLD participants, whereas no differences were detected in MAFLD patients. One prospective study found that hepatic steatosis was associated with a three-fold increase in hepatitis B surface antigen



(HBsAg) seroclearance rate in HBV carriers.<sup>44</sup> Moreover, the presence of hepatic steatosis was associated with a lower HBV DNA load in HCC patients,<sup>39</sup> which might account for our results. Also, recent studies showed that steatosis in CHB patients was significantly associated with lower risk of HCC incidence.<sup>39,45</sup> Contrastingly, previous studies have shown that MAFLD is associated with the risk of liver fibrosis and inflammatory activity in CHB patients.<sup>46</sup> Thus, additional well-designed studies are needed to confirm these data, which will be important to clarify the effect of MAFLD on liver disease progression in patients with CHB.

This study has several limitations. First, although we performed PSM and multivariate analysis to balance the variables and enhance intergroup comparisons, there was still unidentified bias due to the retrospective nature of the study. Second, data on 3 metabolic parameters (waist circumference, insulin resistance, and C-reactive protein level) used to confirm the diagnosis of MAFLD were not available; thus, a few patients with lean MAFLDs were excluded. Third, because of incomplete information on antiviral treatments, treated patients may be biased to have more favorable outcomes than those of untreated patients. Additionally, the study by Goh et al showed that statin use is associated with a reduced risk of HCC development in patients with CHB;<sup>47</sup> however, fewer patients in this study had dyslipidemia and required statins.

## Conclusion

In conclusion, our study shows an increasing prevalence of MAFLD-HCC and indicates that MAFLD is associated with lower mortality in CHB-HCC patients, independent of metabolic risk factors. In addition, a novel finding of our study was that patients with MAFLD achieved better survival among HCC patients with hepatitis B infection. This may be due to the interaction between steatosis and virus replication. Further work is needed for patient stratification, considering the heterogeneous nature of MAFLD and the complex pathogenesis of HBV.

## Data Sharing Statement

The data that support the findings of this study are available on request from the corresponding author. The data are not publicly available due to privacy or ethical restrictions.

## Ethics Approval and Informed Consent

Institutional Review Board approval was obtained. This study was approved by our institutional review board and the need for written informed consent was waived because of the retrospective nature of the study.

## Informed Consent Statement

Patients were not required to give informed consent to the study because the analysis used anonymous clinical data.

## Acknowledgments

We would like to thank Editage for English language editing.

## Author Contributions

All authors made a significant contribution to the work reported, whether that is in the conception, study design, execution, acquisition of data, analysis and interpretation, or in all these areas; took part in drafting, revising or critically reviewing the article; gave final approval of the version to be published; have agreed on the journal to which the article has been submitted; and agree to be accountable for all aspects of the work.

## Funding

This work was supported in part by grants from the National Natural Science Foundation of China (No. 82160124) and Regional Collaborative Innovation Project of Xinjiang Uygur Autonomous Region (No. 2022E02044).

## Disclosure

The authors declare that they have no competing interests in this work.

## References

1. Eslam M, Newsome PN, Sarin SK, et al. A new definition for metabolic dysfunction-associated fatty liver disease: an international expert consensus statement. *J Hepatol*. 2020;73(1):202–209. doi:10.1016/j.jhep.2020.03.039
2. Tarantino G, Crocetto F, Di Vito C, et al. Association of NAFLD and insulin resistance with non metastatic bladder cancer patients: a Cross-Sectional Retrospective Study. *J Clin Med*. 2021;10(2):346. doi:10.3390/jcm10020346
3. Koh W-P, Dan YY, Goh G-B-B, Jin A, Wang R, Yuan J-M. Dietary fatty acids and risk of hepatocellular carcinoma in the Singapore Chinese health study. *Liver Int*. 2016;36(6):893–901. doi:10.1111/liv.12978
4. Guidelines ECP. Management of hepatocellular carcinoma. *J Hepatol*. 2018;69(1):182–236.
5. Llovet JM, Kelley RK, Villanueva A, et al. Hepatocellular carcinoma. *Nat Rev Dis Primers*. 2021;7(1):6. doi:10.1038/s41572-020-00240-3
6. Chan SL, Wong VWS, Qin S, Chan HLY. Infection and cancer: the case of hepatitis B. *J Clin Oncol*. 2016;34(1):83–90. doi:10.1200/JCO.2015.61.5724
7. Vallet-Pichard A, Pol S. Review article: immunisation against hepatitis B virus infection and the prevention of hepatocellular carcinoma. *Aliment Pharmacol Ther*. 2021;53(11):1166–1182. doi:10.1111/apt.16356
8. Brunt EM, Wong VWS, Nobili V, et al. Nonalcoholic fatty liver disease. *Nat Rev Dis Primers*. 2015;1:15080. doi:10.1038/nrdp.2015.80
9. Janicko M, Senajová G, Drazilová S, et al. Association between metabolic syndrome and hepatitis B virus infection in the Roma population in eastern Slovakia: a population-based study. *Cent Eur J Public Health*. 2014;22(Suppl):S37–S42. doi:10.21101/cejph.a3900
10. Jiang D, Chen C, Liu X, et al. Concurrence and impact of hepatic steatosis on chronic hepatitis B patients: a systematic review and meta-analysis. *Ann Transl Med*. 2021;9(23):1718. doi:10.21037/atm-21-3052
11. Zheng KI, Zheng M-H. Letter: hepatitis B and MAFLD - a consilience of risk factors for hepatocellular carcinoma. *Aliment Pharmacol Ther*. 2021;54(5):736–737. doi:10.1111/apt.16532
12. Chen C-L, Yang H-I, Yang W-S, et al. Metabolic factors and risk of hepatocellular carcinoma by chronic hepatitis B/C infection: a follow-up study in Taiwan. *Gastroenterology*. 2008;135(1):111–121. doi:10.1053/j.gastro.2008.03.073
13. Pickhardt PJ, Graffy PM, Reeder SB, Hernando D, Li K. Quantification of liver fat content with unenhanced MDCT: phantom and clinical correlation with MRI proton density fat fraction. *AJR Am J Roentgenol*. 2018;211(3):W151–W157. doi:10.2214/AJR.17.19391
14. Hayashi T, Saitoh S, Takahashi J, et al. Hepatic fat quantification using the two-point Dixon method and fat color maps based on non-alcoholic fatty liver disease activity score. *Hepatol Res*. 2017;47(5):455–464. doi:10.1111/hepr.12767
15. Forner A, Reig M, Bruix J. Hepatocellular carcinoma. *Lancet*. 2018;391(10127):1301–1314. doi:10.1016/S0140-6736(18)30010-2
16. Xie D-Y, Ren Z-G, Zhou J, Fan J, Gao Q. 2019 Chinese clinical guidelines for the management of hepatocellular carcinoma: updates and insights. *Hepatobiliary Surg Nutr*. 2020;9(4):452–463. doi:10.21037/hbsn-20-480
17. Pugh RN, Murray-Lyon IM, Dawson JL, Pietroni MC, Williams R. Transection of the oesophagus for bleeding oesophageal varices. *Br J Surg*. 1973;60(8):646–649.
18. Kim WR, Mannalithara A, Heimbach JK, et al. MELD 3.0: the model for end-stage liver disease updated for the modern era. *Gastroenterology*. 2021;161(6):1887–1895.e4. doi:10.1053/j.gastro.2021.08.050
19. Conci S, Cipriani F, Donadon M, et al. Hepatectomy for Metabolic Associated Fatty Liver Disease (MAFLD) related HCC: propensity case-matched analysis with viral- and alcohol-related HCC. *Eur J Surg Oncol*. 2022;48(1):103–112. doi:10.1016/j.ejso.2021.07.015
20. Vitale A, Svegliati-Baroni G, Ortolani A, et al. Epidemiological trends and trajectories of MAFLD-associated hepatocellular carcinoma 2002–2033: the ITA.LICA database. *Gut*. 2023;72(1):141–152. doi:10.1136/gutjnl-2021-324915
21. Nan Y, An J, Bao J, et al. The Chinese society of hepatology position statement on the redefinition of fatty liver disease. *J Hepatol*. 2021;75(2):454–461. doi:10.1016/j.jhep.2021.05.003
22. Eslam M, Sanyal AJ, George J. MAFLD: a consensus-driven proposed nomenclature for metabolic associated fatty liver disease. *Gastroenterology*. 2020;158(7):1999–2014.e1. doi:10.1053/j.gastro.2019.11.312
23. Hassan MM, Abdel-Wahab R, Kaseb A, et al. Obesity early in adulthood increases risk but does not affect outcomes of hepatocellular carcinoma. *Gastroenterology*. 2015;149(1):119–129. doi:10.1053/j.gastro.2015.03.044
24. Di Angelantonio E, Bhupathiraju SN, Wormser D, et al. Body-mass index and all-cause mortality: individual-participant-data meta-analysis of 239 prospective studies in four continents. *Lancet*. 2016;388(10046):776–786. doi:10.1016/S0140-6736(16)30175-1
25. Hagström H, Nasr P, Ekstedt M, et al. Risk for development of severe liver disease in lean patients with nonalcoholic fatty liver disease: a long-term follow-up study. *Hepatol Commun*. 2018;2(1):48–57. doi:10.1002/hep4.1124
26. Aron-Wisnewsky J, Vigliotti C, Witjes J, et al. Gut microbiota and human NAFLD: disentangling microbial signatures from metabolic disorders. *Nat Rev Gastroenterol Hepatol*. 2020;17(5):279–297. doi:10.1038/s41575-020-0269-9
27. Jarvis H, Craig D, Barker R, et al. Metabolic risk factors and incident advanced liver disease in non-alcoholic fatty liver disease (NAFLD): a systematic review and meta-analysis of population-based observational studies. *PLoS Med*. 2020;17(4):e1003100. doi:10.1371/journal.pmed.1003100
28. Jensen T, Abdelmalek MF, Sullivan S, et al. Fructose and sugar: a major mediator of non-alcoholic fatty liver disease. *J Hepatol*. 2018;68(5):1063–1075. doi:10.1016/j.jhep.2018.01.019
29. Nobili V, Mantovani A, Cianfarani S, et al. Prevalence of prediabetes and diabetes in children and adolescents with biopsy-proven non-alcoholic fatty liver disease. *J Hepatol*. 2019;71(4):802–810. doi:10.1016/j.jhep.2019.06.023
30. Seto W-K, Hui RWH, Mak L-Y, et al. Association between hepatic steatosis, measured by controlled attenuation parameter, and fibrosis burden in chronic hepatitis B. *Clin Gastroenterol Hepatol*. 2018;16(4):575–583.e2. doi:10.1016/j.cgh.2017.09.044
31. Younossi ZM, Golabi P, de Avila L, et al. The global epidemiology of NAFLD and NASH in patients with type 2 diabetes: a systematic review and meta-analysis. *J Hepatol*. 2019;71(4):793–801. doi:10.1016/j.jhep.2019.06.021
32. Alkhouri N, Dixon LJ, Feldstein AE. Lipotoxicity in nonalcoholic fatty liver disease: not all lipids are created equal. *Expert Rev Gastroenterol Hepatol*. 2009;3(4):445–451. doi:10.1586/egh.09.32
33. Pickhardt PJ, Hahn L, Muñoz Del Rio A, Park SH, Reeder SB, Said A. Natural history of hepatic steatosis: observed outcomes for subsequent liver and cardiovascular complications. *AJR Am J Roentgenol*. 2014;202(4):752–758. doi:10.2214/AJR.13.11367

34. Graffy PM, Pickhardt PJ. Quantification of hepatic and visceral fat by CT and MR imaging: relevance to the obesity epidemic, metabolic syndrome and NAFLD. *Br J Radiol.* **2016**;89(1062):20151024. doi:10.1259/bjr.20151024
35. Hahn L, Reeder SB, Muñoz Del Rio A, Pickhardt PJ. Longitudinal changes in liver fat content in asymptomatic adults: hepatic attenuation on unenhanced CT as an imaging biomarker for steatosis. *AJR Am J Roentgenol.* **2015**;205(6):1167–1172. doi:10.2214/AJR.15.14724
36. Sartoris R, Gregory J, Dioguardi Burgio M, Ronot M, Vilgrain V. HCC advances in diagnosis and prognosis: digital and imaging. *Liver Int.* **2021**; Suppl 41(S1):73–77. doi:10.1111/liv.14865
37. Chan AWH, Wong GLH, Chan H-Y, et al. Concurrent fatty liver increases risk of hepatocellular carcinoma among patients with chronic hepatitis B. *J Gastroenterol Hepatol.* **2017**;32(3):667–676. doi:10.1111/jgh.13536
38. Suliman I, Abdelgelil N, Kassamali F, Hassanein TI. The effects of hepatic steatosis on the natural history of HBV infection. *Clin Liver Dis.* **2019**;23(3):433–450. doi:10.1016/j.cld.2019.05.001
39. Mak L-Y, Hui RW-H, Fung J, et al. Reduced hepatic steatosis is associated with higher risk of hepatocellular carcinoma in chronic hepatitis B infection. *Hepatol Int.* **2021**;15(4):901–911. doi:10.1007/s12072-021-10218-2
40. Yuen M-F, Chen D-S, Dusheiko GM, et al. Hepatitis B virus infection. *Nat Rev Dis Primers.* **2018**;4:18035. doi:10.1038/nrdp.2018.35
41. Lampertico P, Agarwal K, Berg T. EASL 2017 clinical practice guidelines on the management of hepatitis B virus infection. *J Hepatol.* **2017**;67(2):370–398. doi:10.1016/j.jhep.2017.03.021
42. Sun H-C, Zhang W, Qin L-X, et al. Positive serum hepatitis B e antigen is associated with higher risk of early recurrence and poorer survival in patients after curative resection of hepatitis B-related hepatocellular carcinoma. *J Hepatol.* **2007**;47(5):684–690. doi:10.1016/j.jhep.2007.06.019
43. Liu J, Yang H-I, Lee M-H, et al. Spontaneous seroclearance of hepatitis B seromarkers and subsequent risk of hepatocellular carcinoma. *Gut.* **2014**;63(10):1648–1657. doi:10.1136/gutjnl-2013-305785
44. Mak L-Y, Hui RW-H, Fung J, et al. Diverse effects of hepatic steatosis on fibrosis progression and functional cure in virologically quiescent chronic hepatitis B. *J Hepatol.* **2020**;73(4):800–806. doi:10.1016/j.jhep.2020.05.040
45. Wong YJ, Nguyen VH, Yang H-I, et al. Impact of fatty liver on long-term outcomes in chronic hepatitis B: a systematic review and matched analysis of individual patient data meta-analysis. *Clin Mol Hepatol.* **2023**;29(3):705–720. doi:10.3350/cmh.2023.0004
46. Chen X, Zhou J, Wu L, Zhu X, Deng H. MAFLD is associated with the risk of liver fibrosis and inflammatory activity in HBeAg-negative CHB patients. *Diabetes Metab Syndr Obes.* **2022**;15:673–683. doi:10.2147/DMSO.S351492
47. Goh MJ, Sinn DH, Kim S, et al. Statin use and the risk of hepatocellular carcinoma in patients with chronic hepatitis B. *Hepatology.* **2020**;71(6):2023–2032. doi:10.1002/hep.30973

## Diabetes, Metabolic Syndrome and Obesity

Dovepress

### Publish your work in this journal

Diabetes, Metabolic Syndrome and Obesity is an international, peer-reviewed open-access journal committed to the rapid publication of the latest laboratory and clinical findings in the fields of diabetes, metabolic syndrome and obesity research. Original research, review, case reports, hypothesis formation, expert opinion and commentaries are all considered for publication. The manuscript management system is completely online and includes a very quick and fair peer-review system, which is all easy to use. Visit <http://www.dovepress.com/testimonials.php> to read real quotes from published authors.

Submit your manuscript here: <https://www.dovepress.com/diabetes-metabolic-syndrome-and-obesity-journal>