

# Validation of the THINC-It Tool for Assessment of Cognitive Impairment in Patients with Bipolar Depression

Na Zhu<sup>1,\*</sup>, WeiHua Zhang<sup>2,\*</sup>, Jia Huang<sup>3</sup>, Yousong Su<sup>3</sup>, JingFang Lu<sup>3</sup>, Lu Yang<sup>3</sup>, YiFan Shi<sup>3</sup>, ShaoHua Hu<sup>4,\*</sup>, Jun Chen<sup>5,\*</sup>, Yiru Fang<sup>3,5,6,\*</sup>

<sup>1</sup>Department of Psychiatry, Shanghai Pudong New Area Mental Health Center, Tong Ji University School of Medicine, Shanghai, People's Republic of China; <sup>2</sup>Department of Psychiatry, Taizhou Second People's Hospital, Taizhou, People's Republic of China; <sup>3</sup>Clinical Research Center, Shanghai Mental Health Center, Shanghai Jiao Tong University School of Medicine, Shanghai, People's Republic of China; <sup>4</sup>Department of Psychiatry, First Affiliated Hospital, Zhejiang University School of Medicine, The Key Laboratory of Mental Disorder Management of Zhejiang Province, Hangzhou, People's Republic of China; <sup>5</sup>Shanghai Key Laboratory of Psychotic Disorders, Shanghai, People's Republic of China; <sup>6</sup>State Key Laboratory of Neuroscience, Shanghai Institutes for Biological Sciences, CAS, Shanghai, People's Republic of China

\*These authors contributed equally to this work

Correspondence: ShaoHua Hu; Jun Chen, Email [dorhushaohua@zju.edu.cn](mailto:dorhushaohua@zju.edu.cn); [doctorcj2010@gmail.com](mailto:doctorcj2010@gmail.com)

**Background:** Cognitive impairment is one of the core features of bipolar depression. A unified, reliable, and valid assessment tool is key to screening and assessing cognitive impairment. The THINC-Integrated Tool (THINC-it) is a simple and quick battery for screening cognitive impairment in patients with major depressive disorder. However, the use of the tool has not been validated in patients with bipolar depression.

**Methods:** The cognitive functions of 120 patients with bipolar depression and 100 healthy controls were evaluated using the THINC-it tool including Spotter, Symbol Check, Codebreaker, Trials, and the only one subjective test (PDQ-5-D) and five corresponding standard tests. A psychometric analysis of the THINC-it tool was performed.

**Results:** The overall Cronbach's alpha coefficient of the THINC-it tool was 0.815. The intra-group correlation coefficient (ICC) of retest reliability ranged from 0.571 to 0.854 ( $P < 0.001$ ), while the correlation  $r$  of parallel validity ranged from 0.291 to 0.921 ( $P < 0.001$ ). There were significant differences in the two groups Z-scores of THINC-it total score, Spotter, Codebreaker, Trails, and PDQ-5-D ( $P < 0.05$ ). Construct validity was analyzed using exploratory factor analysis (EFA). The Kaiser-Meyer-Olkin (KMO) value was 0.749. Using Bartlett's Sphericity test, the  $\chi^2$  (10) value was 198.257 ( $P < 0.001$ ). The factor loading coefficients of Spotter, Symbol Check, Codebreaker, and Trails on the common factor 1 were  $-0.724$ ,  $0.748$ ,  $0.824$ , and  $-0.717$ , respectively, and the factor loading coefficient of PDQ-5-D on the common factor 2 was  $0.957$ . Results revealed that the correlation coefficient of the two common factors was  $0.125$ .

**Conclusion:** The THINC-it tool has good reliability and validity in assessing patients with bipolar depression.

**Keywords:** bipolar disorder, cognitive impairment, reliability, THINC-it tool, validity

## Introduction

Bipolar depression (BD-D) is a major depressive episode of bipolar disorder that greatly distresses patients. Cognitive impairment is a critical feature of BD-D and one of the major causes of patient function impairment. Cognitive impairment is significantly heterogeneous in patients with BD-D. From the previous studies,<sup>1,2</sup> the proportion of BD-D patients with multi-domain cognitive impairment, selective cognitive impairment (attention/alertness and psychomotor speed), and without significant cognitive impairment ranged from 12% to 40%, 29% to 40%, and 32% to 48%, respectively. The most frequently affected cognitive domains include attention/alertness, memory, and executive function, regardless of whether the depression is an acute episode or stable.<sup>3-5</sup> Cognitive impairment is associated with

decreased functional capacity and poor prognosis<sup>6</sup> and poses significant harm to individuals with BD-D and a heavy burden to families and society. Therefore, screening tools need to be developed to identify cognitive impairment in patients with BD-D.

Regular screening can dynamically assess the clinical efficacy of the intervention on cognitive function and further improve treatment compliance.<sup>7</sup> For these reasons, cognitive assessment has attracted increasing attention from multiple scientific disciplines. However, simple and effective standardized screening tools for assessing cognitive impairment are lacking in BD-D. Several subjective and objective cognitive assessment tools have been developed and assessed the amount of cognitive effort associated with the performance of a given task in clinical practice. Currently, the commonly used subjective cognitive assessment tools including the Perceived Deficits Questionnaire (PDQ-D)<sup>8</sup> and the Cognitive Complaints in Bipolar Disorder Rating Assessment (COBRA),<sup>9</sup> Along with the objective cognitive assessment tools (ie, the Wisconsin card sorting test, the Stroop Test, the Trail Making Test, the Go/NoGo and the N-Back Test), mainly assess the cognitive domains of attention/alertness, processing speed, executive function, memory, and language. The above single tests are simple to operate but only assess a certain dimension of cognitive impairment and need to be used in combination with multiple tests in the clinic. The cognitive battery tools, including the Cambridge Neuropsychological Test Automatic Battery (CANTAB), the MATRICS Consensus Cognitive Battery (MCCB), the Repeatable Battery for the Assessment of Neuropsychological Status (RBANS), and The Cogstate Brief Battery (CBB), have been assessed multiple cognitive domains and are being extensively investigated in a number of preclinical studies for various diseases. Although they are easy to operate, they also have some disadvantages, like, eg, the RBANS tool is simple to conduct and takes a short time, but was initially designed for mild to severe dementia, not very suitable for people with mood disorders. The CBB, MCCB, and CANTAB provide sensitive and accurate test results, but they are complex, time-consuming, and expensive, making their application in clinical practice difficult. Therefore, developing a simple, free, accessible, and effective screening tool like THINC-it to assess cognitive function in patients with BD-D has become an essential issue for mental health practitioners.

The THINC-it tool<sup>10</sup> is a free, simple, and easy-to-use cognitive screening tool, which has already been validated in patients with major depressive disorder by Dr. McIntyre and Lam<sup>11</sup> and applied in a clinical setting. The THINC-it tool is the first cognitive tool to combine subjective and objective cognitive assessment. It contains five subscales, such as Codebreaker, Trials, Spotter, SymbolCheck and PDQ-5-D in the battery.<sup>12</sup> The entire assessment only takes approximately 10–15 minutes and can therefore be completed by patients while waiting for their doctors. Hannah<sup>13</sup> considered the THINC-it tool advantageous in busy clinics with limited staff since it can reduce unnecessary expenditures on medical resources. There is evidence that the THINC-it tool can assess cognitive impairment in patients with major depression with high sensitivity<sup>14,15</sup> and applies to the Chinese population.<sup>16</sup> Our previous study has reported on the clinical application of the tool in patients with BD-D in the Chinese population.<sup>17</sup> However, its conclusions were not very convincing owing to only 58 cases that had been included in the data analysis. Thus, considering the inadequate sample sizes of previous studies, the primary aim of this study was that further validation of the THINC-it was achieved by recruiting more patients with bipolar depression and refining research designs and processes.

## Method

### Sample

The study participants comprised 120 patients with BD-D, and 100 healthy individuals (HC), all of Han Chinese origin (Table 1). The study procedures were conducted in the outpatient and inpatient psychiatry clinics of the Shanghai Mental Health Center and the Pudong New Area Mental Health Center, China. BD-D patients were diagnosed based on the fifth edition of the Diagnostic and Statistical Manual of Mental Disorders (DSM-V).<sup>18</sup> On the other hand, the healthy controls did not meet the diagnosis of any mental disorder according to the DSM-V diagnostic criteria and did not have any history of neurological disorders, alcohol dependency, or family history of mental disorders among their first-degree relatives. All patients were recruited for participation in our former clinical trial (Clinical Trial Registry ID: NCT04471454), but the data used here were acquired at enrollment. Patients were required to meet the following

**Table 1** Comparison of General Information

	BD-D (n=120)	HC (n=100)	t/ $\chi^2$	P
Age, (years, mean $\pm$ SD)	31.0 $\pm$ 10.8	31.6 $\pm$ 6.0	-0.54	0.59
Gender (n, %)			2.85	0.09
Male	40 (33.3)	23 (23.0)		
Female	80 (66.7)	77 (77.0)		
Marital status (n, %)			36.55	<0.001
Never married	84 (70.0)	40 (40.0)		
Married	27 (22.5)	60 (60.0)		
Divorced	9 (7.5)	0 (0.0)		
Occupation (n, %)			46.76	<0.001
Unemployed	32 (26.7)	6 (6.0)		
Employment	51 (42.5)	78 (78.0)		
Retired	1 (0.8)	0 (0.0)		
Student	36 (30.0)	16 (16.0)		
Level of education (years, mean $\pm$ SD)	14.2 $\pm$ 2.6	15.9 $\pm$ 3.6	-3.83	<0.001
Scales scores				
HAMD scores (mean $\pm$ SD)	4.2 $\pm$ 7.2			
YMRS scores (mean $\pm$ SD)	0.3 $\pm$ 1.6			

**Abbreviations:** BD-D, Bipolar depression, HC, Healthy Controls, HAMD, Hamilton Depression Scale, YMRS, Young Mania Rating Scale, SD, standard deviation.

criteria: (a) Han Chinese, aged between 18 and 65. (b) Only patients on Selective Serotonin Reuptake Inhibitor (SSRI) drugs, antipsychotics with olanzapine

/quetiapine, and mood stabilizer treatment for at least two weeks were included. (c) Patients with relatively stable symptoms after a period of treatment, with HAMD scores < 17. The exclusion criteria included: patients on treatment that seriously affects cognition, patients who had consumed alcohol 24 hours and Benzodiazepine 12 hours prior to the cognitive testing, and patients who had been treated with electroconvulsive therapy (ECT) in the 6 months preceding the study.

## Clinical Assessment

We used five classical neurocognitive tests, including the THINC-it tool, and five standard cognitive tests, consisting of the Reaction Time (RTI), 1-back, the Digit Symbol Substitution Test (DSST), the Trail Making Test B (TMT-B), and PDQ-5-D (paper-and-pencil). The domains assessed including attention/alertness, processing speed, executive function, and working memory (Table 2). Seventeen items of the Hamilton Depression Rating Scale (HAMD-17) were used to assess the severity of depression with the delimitation score as follows: total score >24 for severe depression, >17 for mild or moderate depression, and <7 for no depression symptoms.

The young mania rating scale (YMRS) was used to assess symptoms of mania. This is an 11-item clinician-administered scale. Patients with a YMRS score  $\leq$  5 were considered to have no manic episodes.

**Table 2** Cognitive Function Dimensions and Measurement Indicators Reflected by Various Neuropsychological Tests

Cognitive Dimension	Test	Measurement Index
Processing speed, attention/alertness	Digital symbol substitution test (paper-and-pencil), Codebreaker	Correct numbers
Attention/alertness, motor speed	RTI, Spotter	Average response times (s)
Executive function	TMT-B (paper-and-pencil), Trails	Complete times (s)
Attention/alertness, work memory, motor speed	1-back task, SymbolCheck	Correct rates (%)
Attention/alertness, prospective memory, retrospective memory, and planning/organization	PDQ-5-D (paper-and-pencil), PDQ-5-D	Total scores

**Abbreviations:** RTI, Reaction Time; PDQ-5-D, Perceived Deficits Questionnaire for Depression-5-items; TMT-B, Trail Making Test B.

## Procedure

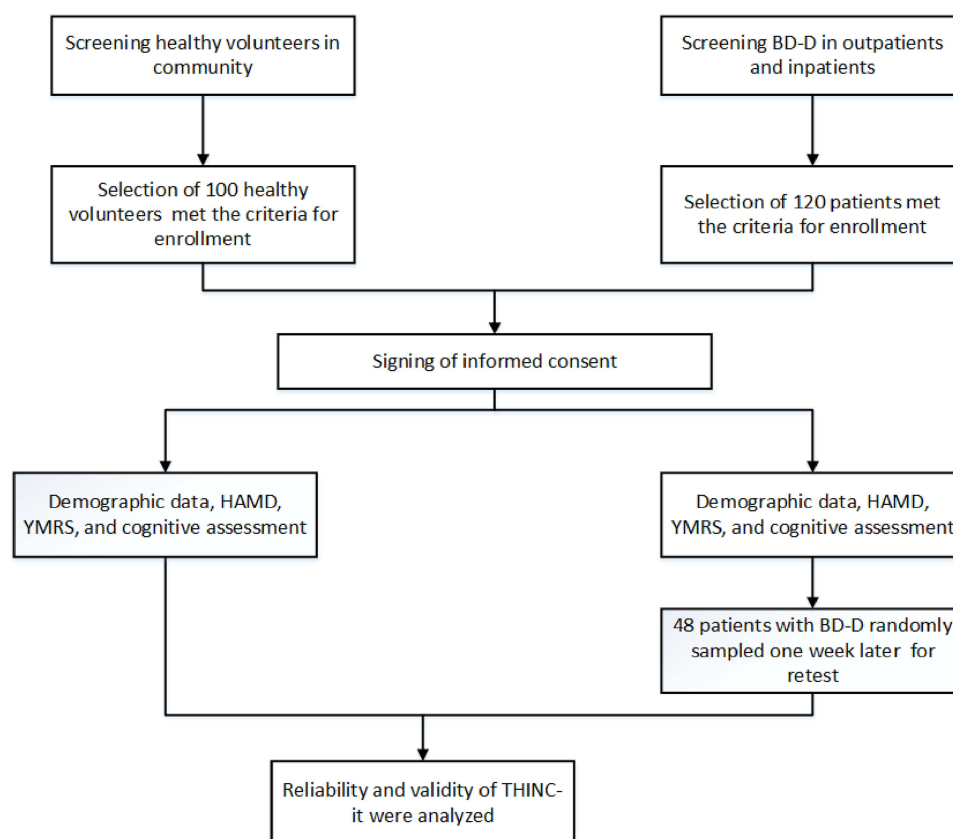
The diagnosis of each patient was based on consensus by specialists in psychiatry according to the DSM-V criteria for BD-D. At the beginning of the study, sociodemographic data were collected from the study participants and psychopathology was rated using HAMD-17 and YMRS. After that, the participants were required to complete the THINC-it tool and five standard cognitive tests. All behavioral tests were conducted in a quiet environment. Forty-eight patients with BD-D were randomly selected and re-assessed after one week using the THINC-it tool to verify the test-retest reliability (Figure 1).

The protocol for this research was approved by the Research Ethics Committee of the Clinical Research Center, Shanghai Mental Health Center, Shanghai Jiao Tong University School of Medicine (No:2020-03), the Shanghai Pudong New Area Mental Health Center and Tongji University School of Medicine (No: PDJWLL2019010). All subjects voluntarily signed a written informed consent before study inclusion, and the study was conducted according to the guidelines of the Helsinki Declaration.

## Statistical Analysis

The sample size was estimated to be at least 5~10 times the number of variables using Kendall. The THINC-it tool was developed and presented results from the statistical outcomes of the tool. The raw scores of PDQ-5-D, Spotter, and Trails were positively correlated with the severity of cognitive impairment. To account for this reversal, all raw cores of PDQ-5-D, Spotter, and Trails must multiply it by  $-1$  to switch the sign (ie, if it's negative, make it positive, and vice versa). For calculating of the total THINC-it composite score, each of the THINC-it tasks was assigned a weight of 0.20. Accordingly, a higher score indicated better cognitive function.

SPSS 22.0 was used for statistical analysis. Data for the questionnaire items were transformed using an integrated z-score according to a method described by McIntyre.<sup>19</sup>



**Figure 1** The flowchart of study participation.

**Abbreviations:** BD-D, Bipolar depression; HAMD, Hamilton Depression Scale; YMRS, Young Mania Rating Scale.

Cronbach's  $\alpha$  coefficient was used to calculate the internal consistency reliability, while Pearson correlation analysis was used to calculate external consistency reliability. Exploratory factor analysis (EFA) was used to calculate the rationality of the Construct validity.

After the standard score (Z score) for each index of the THINC-it tool was transformed, discriminative validity was used to calculate the difference in cognitive impairment between the BD-D and the healthy control group using the rank-sum test and an analysis of covariance (ANCOVA) test.

Parallel validity using Pearson correlation analysis was used to analyze the correlation between the THINC-it tool and standardized test scores.

P-value <0.05 (two sides) was considered statistically significant.

## Results

A total of 120 BD-D patients and 100 healthy controls were included in the analysis. There were significant differences in the level of education ( $t=-3.831$ ,  $P<0.001$ ), marital status ( $t=36.546$ ,  $P<0.001$ ), and occupation ( $\chi^2=46.756$ ,  $P<0.001$ ) between the healthy and BD-D groups. The level of education was lower in the BD-D group compared to the healthy control group (Table 1).

## Internal Consistency

The five subtests of the THINC-it tool had a high internal consistency with a Cronbach's  $\alpha$  of 0.815. However, Cronbach's alpha coefficient of the standard test was 0.688.

## Test-Retest Reliability

Forty-eight patients with BD-D were followed up for one week for the THINC-it test-retest using the intra-group correlation coefficient (ICC). The results showed that the ICC ranged from 0.571 to 0.854 ( $P<0.001$ ) (Table 3).

## Construct Validity

Exploratory Factor Analysis (EFA) was performed in the current study to evaluate the construct validity. The results showed that the KMO value was 0.749, and Bartlett's Sphericity test,  $\chi^2$  (10), was 198.257 ( $P<0.001$ ). The factor loading coefficients of Spotter, Symbol Check, Codebreaker, and Trails on the common factor 1 were  $-0.724$ ,  $0.748$ ,  $0.824$ , and  $-0.717$ , respectively. The factor loading coefficient of PDQ-5-D on the common factor 2 was 0.957 (Table 4). The correlation coefficient of the two common factors was 0.125 (Table 5).

## Parallel Validity

The two RTI data were not saved, and only 218 subjects were included for statistical analysis. The correlation  $r$  values between the THINC-it tool and the standard tests ranged from 0.291 to 0.921 (all  $P < 0.001$ ) (Table 6).

**Table 3** Test-Retest Reliability of the THINC-It Tool

	ICC	95% CI	P
Spotter	0.800	0.667–0.883	<0.001
Symbol Check	0.854	0.754–0.916	<0.001
Codebreaker	0.818	0.697–0.894	<0.001
Trails	0.571	0.345–0.734	<0.001
PDQ-5-D	0.689	0.505–0.813	<0.001
THINC-it Objective subscales	0.615	0.401–0.766	<0.001
THINC-it battery	0.591	0.369–0.750	<0.001

**Abbreviations:** PDQ-5-D, Perceived Deficits Questionnaire for Depression–5-items; ICC, Intra-group Correlation Coefficient; CI, Confidence Interval.

**Table 4** The Factor Load Matrix After Rotation

THINC-It	Factor 1	Factor 2
Spotter	−0.724	−0.095
Symbol Check	0.748	0.193
Codebreaker	0.824	0.040
Trails	−0.717	0.187
PDQ-5-D	0.049	0.957

**Abbreviation:** PDQ-5-D, Perceived Deficits Questionnaire for Depression–5-items.

**Table 5** The Results of the Structural Analyses of the THINC-It Tool

	Factor 1	Factor 2
Factor 1	1	
Factor 2	0.125	1
The square roots of AVE	0.675	0.447

**Abbreviation:** AVE, Average Variance Extracted.

**Table 6** Parallel Validity Analysis of the THINC-It Tool and Standard Test

THINC-It	Standard Test	Pearson (r)	P
Spotter	RTI	0.341	<0.001
Symbol Check	I-back	0.291	<0.001
Codebreaker	DSST	0.578	<0.001
Trails	TMT-B	0.731	<0.001
PDQ-5-D	PDQ-5-D (paper-and-pencil)	0.921	<0.001
THINC-it Objective score	Standard test Objective score	0.858	<0.001
THINC-it total score	Standard test total score	0.426	<0.001

**Abbreviations:** PDQ-5-D, Perceived Deficits Questionnaire for Depression–5-items; RTI, Reaction Time; DSST, Digit Symbol Substitution Test; TMT-B, Trail Making Test B.

## Discriminant Validity

Cognitive function scores were derived by averaging the Z-scores of all tests. Rank-sum test analysis showed significant differences in the Z-scores of the THINC-it total score, Spotter, Codebreaker, Trails, and PDQ-5-D ( $Z=-3.861, -4.017, -3.026, -4.408, -4.218$ ;  $P<0.05$ ) between the two groups. After adjusting for occupation, marital status and level of education by an analysis of covariance (ANCOVA) test, We also found that the same significant differences in Z-scores of the THINC-it total score, Spotter, Codebreaker, Trails, and PDQ-5-D ( $F=27.821, 17.122, 9.293, 8.561, 18.716$ ;  $P<0.05$ ). In contrast, there was still no significant difference in Symbol Check between the two groups (Table 7 and Table 8).

## Discussion

The THINC-it tool is simple, quick to conduct, and has broad potential application in the clinical setting. The THINC-it tool has been validated in Chinese populations and has been shown to be able to detect cognitive disorders in patients with MDD.<sup>16</sup> Our study replicated and extended the study findings reported in Chinese populations and demonstrated that the THINC-it tool had good construct validity, test-retest reliability, discriminative validity, and an acceptable internal consistency among adults with BD-D.

The study showed that Cronbach's  $\alpha$  coefficient of the THINC-it tool had good internal consistency. However, Cronbach's  $\alpha$  coefficient of the standard test was 0.688, which was unsatisfactory. Hou<sup>16</sup> found that the subjective and

**Table 7** Comparison of z-Scores on THINC-It Tool Between BD-D and HC

Item	BD-D (n=120)	HC (n=100)	Z	P
Spotter	0.265±1.042	-0.320±0.848	-4.017	<0.001
Symbol Check	-0.080±1.073	0.096±0.900	-1.212	0.225
Codebreaker	-0.175±1.111	0.210±0.804	-3.026	0.002
Trails	0.213±1.265	-0.255±0.408	-4.408	<0.001
PDQ-5-D	0.279±1.109	-0.335±0.725	-4.218	<0.001
THINC-it total score	0.106±0.411	-0.122±0.318	-3.861	<0.001

**Abbreviations:** PDQ-5-D, Perceived Deficits Questionnaire for Depression-5-items; BD-D, Bipolar depression; HC, Healthy Controls.

**Table 8** Comparison of z-Scores on THINC-It Tool Between BD-D and HC, Adjusted for Occupation, Marital Status and level of Education

Item	BD-D (n=120)	HC (n=100)	F	P
Spotter	0.265±1.042	-0.320±0.848	17.122	<0.001
Symbol Check	-0.080±1.073	0.096±0.900	1.439	0.232
Codebreaker	-0.175±1.111	0.210±0.804	9.293	0.003
Trails	0.213±1.265	-0.255±0.408	8.561	0.004
PDQ-5-D	0.279±1.109	-0.335±0.725	18.716	<0.001
THINC-it total score	0.106±0.411	-0.122±0.318	27.821	<0.001

**Abbreviations:** PDQ-5-D, Perceived Deficits Questionnaire for Depression-5-items; BD-D, Bipolar depression; HC, Healthy Controls.

objective tests of the THINC-it tool had Cronbach's  $\alpha$  coefficients of 0.684 and 0.704, respectively, in patients with depression. These scores were not ideal, but they were acceptable. Another study by Harrison<sup>20</sup> revealed that the THINC-it tool had a good internal consistency, the internal consistency (Cronbach's  $\alpha$ ) of the four objective tests ranged from 0.7 to 0.93, and the subjective test (PDQ-5-D) was 0.76. Thus, the THINC-it tool is a screening tool with good internal stability. Furthermore, The above studies demonstrated that the internal consistency of the THINC-it tool was acceptable in different cultural backgrounds and diseases.

The retest reliability suggested poor reproducibility of Trails, a finding that was consistent with the results obtained by Hou<sup>16</sup> and Zhang,<sup>17</sup> but inconsistent with results obtained by Harrison<sup>20</sup> ( $r=0.74-0.81$ ). The discrepancy in the results was attributed to two factors. One factor could be the difference in the participants used in the retest. Healthy controls were retested in the study by Harrison,<sup>20</sup> but only BD-D patients were retested in our study. Another factor could be differences in interest frequency. Three assessments were conducted between the two retests in the Harrison study, which involved retesting the same cognitive tests. Thus, the stability of the THINC-it tool improved with increasing familiarity and repetition of the tool under the influence of learning effects.

The results also showed that the objective tests (Spotter, Symbol Check, Codebreaker, Trails) of the THINC-it were distributed in the common factor 1, the subjective tests (PDQ-5-D) in the common factor 2, and the factor loading coefficient of the absolute value was  $> 0.4$ . This indicated that the objective test was strongly correlated with common factor 1, and the subjective test was strongly correlated with common factor 2. In addition, in both frameworks, the dimensions of the subjective and objective constructs were set reasonably, so the structure of the THINC-it was clear and reasonable, giving it great structural validity.

The study showed that the PDQ-5-D had the highest correlation with standard test instruments in the subjective tests. Meanwhile, in the objective tests, the correlation between Symbol Check and Spotter was very poor, which was consistent with findings from a previous study. However, unlike a previous study,<sup>17</sup> our study discovered that the Trails had the highest correlation in four objective tests. These results were similar to those obtained by Harrison<sup>20</sup> but different from those obtained in a study by McIntyre.<sup>11</sup> The discrepancy in the results could be attributed to the study



participants' age and level of education, who had different proficiency in the order of letters. Several studies have shown a low correlation between the Symbol Check and the standard tests in healthy subjects and patients,<sup>16,20</sup> which was consistent with findings from our study. The low correlation between the two tests may be because the operational requirements of the symbol check differed from those of the traditional tests, and subjects needed to shift their attention quickly between stimulus sequences and response options.

The Symbol Check is an important component of the THINC-it tool, reflecting the working memory in visual space.<sup>11</sup> Our study tested the theory that found a significant difference in the THINC-it tool's composite scores between the patients and the healthy controls. However, the Symbol Check did not distinguish between BD-D patients and healthy controls irrespective of occupation, marital status, or level of education. In other words, there was no significant decrease in working memory in BD-D patients compared with healthy volunteers. The above conclusion was in accordance with the research conclusions in depressive patients.<sup>16</sup> This may be because the working memory was assessed using a dual-task paradigm, and subjects were susceptible to distraction by multiple tasks, leading to no significant difference in the results. It is also possible that in the actual test, most subjects (including healthy controls) had difficulty understanding the operating rules and operated with an enormous difficulty factor, making it difficult to distinguish the low scores. In addition, bias could have been introduced by only considering the accuracy rate while ignoring the reaction time in the analysis of Symbol Check data. These findings were contrary to the conclusions drawn by some scholars.<sup>21,22</sup> It may be relevant to account for factors such as the disease status, assessment tools, medication, and other characteristics of the enrolled patients during statistical analysis.

Our study found that bipolar depression had subjective and objective cognitive impairment such as attention/alertness, information processing speed, and executive function. Galimberti et al<sup>23</sup> found the impairment of memory and executive functioning by the Montreal Cognitive Assessment (MoCA) in BD-D patients. Some researchers had used CANTAB to find that BD-D patients had cognitive impairment in multiple domains, including executive control, visuospatial memory, verbal working memory, verbal learning, memory and spatial cognition.<sup>24</sup> In another study, using WCST and Wechsler memory scales, patients with BD-D performed worse in memory and executive function.<sup>25</sup> According to the MCCB, cognitive impairment is more prevalent in patients with BD depressive episodes, especially in multiple domains related to reasoning problem solving, information processing speed and visual learning.<sup>26</sup> Despite the above research results used different cognitive assessment tools, the domains of cognitive impairment were approximately the same as ours. It verified the applicability of THINC-it tool again. The above recognized cognitive tools provide an accurate assessment of objective cognition, however, they do not provide a complete assessment of subjective cognitive impairment. In addition, the existing cognitive assessment tools were time-consuming, complicated in operation, and costly, which brought difficulties to clinical practices. The THINC-it tool would not only potentially avoid the above mentioned problems, but also further assess subjective and objective cognitive function as comprehensively as possible. The tool worked on computers and tablets and had advantages such as easy, quick and economical. Therefore, it was expected to enable dynamic assessment, which would facilitate clinical diagnostics and personalized treatment plans in the future.

In conclusion, the present study pointed out the presence of specific cognitive deficits in patients with BD-D compared with HCs. Specifically, deficits were observed in general cognitive functions such as executive function, attention/alertness, processing speed, and subjective cognitive impairment. These findings differ marginally from previous studies.<sup>23,27,28</sup> These inconsistencies could be related to differences in tools used to measure cognitive function. In summary, this study demonstrates that the THINC-it tool can be used to screen for cognitive impairment in patients with bipolar depression. There were some limitations to this study. Firstly, we also did not control for factors such as disease status, medication status, psychotherapy, and other factors that could have affected cognitive performance. In addition, the sample size used for the 7-day follow-up was insufficient due to the outbreak of the COVID-19 pandemic. More research is needed into the effect of psychosocial, behavioral, and physiological factors that affect adherence.

## Data Sharing Statement

All data generated or analyzed during this study are included in this published article.



## Consent for Publication

All authors reviewed and agreed to publish the manuscript.

## Acknowledgments

This work was supported by the Young Medical Talents Training Project of Health Commission in Pudong New Area (PWRq2020-59), the National Natural Science Foundation of China (81761128032, 81930033, 81771465), the Clinical Research Plan of SHDC (SHDC12020126), Key Area Research and Development Program of Guangdong Province (2018B030334001), Clinical Research Center of Shanghai Mental Health Center Key Project (CRC2021ZD01, CRC2018ZD02, CRC2021DX01), Key Area Research and Development Program of Guangdong Province (2018B030334001), Shanghai Clinical Research Center for Mental Health (19MC1911100), National Key R&D Program of China (2016YFC1307100).

## Disclosure

The authors declare no conflicts of interest in this work.

## References

- Green MJ, Girshkin L, Kremerskothen K, et al. A systematic review of studies reporting data-driven cognitive subtypes across the psychosis spectrum. *Neuropsychol Rev*. 2019;29:1–15. doi:10.1007/s11065-019-09403-w
- Rabelo-Da-Ponte FD, Flávia L, Rosa A, et al. Data-driven cognitive phenotypes in subjects with bipolar disorder and their clinical markers of severity. *Psychol Med*. 2021;2021:1.
- Cipriani G, Danti S, Carlesi C, et al. Bipolar disorder and cognitive dysfunction. *J Nerv Ment Dis*. 2017;205(10):743–756. doi:10.1097/NMD.0000000000000720
- Camelo EVM, Mo P, Abi D, et al. Performance of bipolar disorder patients in attention testing: comparison with normal controls and among manic, depressive, and euthymic phases. *Psychiatr Q*. 2017;88(1):55–63. doi:10.1007/s11126-016-9430-6
- Cullen B, Ward J, Graham NA, et al. Prevalence and correlates of cognitive impairment in euthymic adults with bipolar disorder: a systematic review. *J Affect Disord*. 2016;205:165–181. doi:10.1016/j.jad.2016.06.063
- Lone D, Macoveanu J, Vinberg M, et al. The BDNF Val66Met polymorphism has no effect on encoding-related hippocampal response but influences recall in remitted patients with bipolar disorder. *Front Psychiatry*. 2019;10:845. doi:10.3389/fpsy.2019.00845
- Mago R, Borra D, Mahajan R. Role of adverse effects in medication nonadherence in bipolar disorder. *Harv Rev Psychiatry*. 2014;22:363–366. doi:10.1097/HRP.0000000000000017
- Chuan S, Gang W, Feng T, et al. Reliability and validity of Chinese version of perceived deficits questionnaire for depression in patients with MDD. *Psychiatry Res*. 2017;252:319–324. doi:10.1016/j.psychres.2017.03.021
- Kuniyoshi T, Yutaka F, Nobuyuki M, et al. Validity and reliability of the Cognitive Complaints in Bipolar Disorder Rating Assessment (COBRA) in Japanese patients with bipolar disorder. *Psychiatry Res*. 2017;254:85–89. doi:10.1016/j.psychres.2017.04.043
- Ragguett RM, Cha DS, Kakar R, et al. Assessing and measuring cognitive function in major depressive disorder. *Evid Based Ment Health*. 2016;19(4):106–109. doi:10.1136/eb-2016-102456
- McIntyre RS, Best MW, Bowie CR, et al. The THINC-Integrated Tool (THINC-it) screening assessment for cognitive dysfunction: validation in patients with major depressive disorder. *Clin Psychiatry*. 2017;78(7):873–881. doi:10.4088/JCP.16m11329
- Fiorillo A, Carpinello B, De Giorgi S, et al. Assessment and management of cognitive and psychosocial dysfunctions in patients with major depressive disorder: a Clinical review. *Front Psychiatry*. 2018;9:493. doi:10.3389/fpsy.2018.00493
- Zuckerman H, Pan Z, Park C, et al. Recognition and treatment of cognitive dysfunction in major depressive disorder. *Front Psychiatry*. 2018;9(9):655. doi:10.3389/fpsy.2018.00655
- Cha DS, Carmona NE, Subramaniapillai M, et al. Cognitive Impairment as Measured by the THINC-Integrated tool (THINC-it): association with psychosocial function in major depressive disorder. *J Affect Disord*. 2017;15(1):62–67.
- Culpepper L, Lam RW, McIntyre RS. Cognitive impairment in patients with depression: awareness, assessment, and management. *J Clin Psychiatry*. 2017;78(9):1383–1394. doi:10.4088/JCP.tk16043ah5c
- Hou Y, Yao S, Hu S, et al. PSYCHOMETRIC properties of the Chinese version of the THINC-it tool for cognitive symptoms in patients with major depressive disorder. *J Affect Disord*. 2020;273:586–591. doi:10.1016/j.jad.2020.03.146
- Zhang W, Zhu N, Lai J, et al. Reliability and validity of THINC-it in evaluating cognitive function of patients with bipolar depression. *Neuropsychiatr Dis Treat*. 2020;16:2419–2428.
- Publishing A P. *Diagnostic and Statistical Manual of Mental Disorders*. Washington, DC: Auteur; 2013.
- McIntyre RS, Subramaniapillai MP, Park C, et al. The THINC-it tool for cognitive assessment and measurement in major depressive disorder: sensitivity to change. *Front Psychiatry*. 2020;11:546. doi:10.3389/fpsy.2020.00546
- Harrison JE, Harry B, Baune BT, et al. Stability, reliability, and validity of the THINC-it screening tool for cognitive impairment in depression: a psychometric exploration in healthy volunteers. *Int J Methods Psychiatr Res*. 2018;27(3):e1736. doi:10.1002/mpr.1736
- Zhong S, Lai S, Yue J, et al. The characteristic of cognitive impairments in patients with bipolar II depression and its association with N-acetyl aspartate of the prefrontal white matter. *Ann Transl Med*. 2020;8(21):1457. doi:10.21037/atm-20-7098
- Caada Y, Sabater A, Sierra P, et al. The effect of concomitant benzodiazepine use on neurocognition in stable, long-term patients with bipolar disorder. *Aust NZ J Psychiatry*. 2020;6(2):1–12.

23. Galimberti C, Bosi MF, Caricasole V, et al. Using network analysis to explore cognitive domains in patients with unipolar versus bipolar depression: a prospective naturalistic study. *CNS Spectr*. 2019;25(3):1–12.
24. Gallagher P, Gray JM, Watson S, et al. Neurocognitive functioning in bipolar depression: a component structure analysis. *Psychol Med*. 2014;44(5):961–974. doi:10.1017/S0033291713001487
25. Yi CAI, Weiping K, Tiansheng G, et al. Clinical characteristics and cognitive function of unipolar and bipolar depression. *J Cent South Univ*. 2012;37(11):1152–1155.
26. Huimin Z, O'Connor LK, Öngür D, Cohen BM, Keshavan MS, Lewandowski KE. Measuring cognition in bipolar disorder with psychosis using the MATRICS consensus cognitive battery. *J Int Neuropsychol Soc*. 2015;21(6):468–472. doi:10.1017/S1355617715000442
27. Zhang Y, Li G, Lu LY, et al. Comparison of cognitive impairment in patients with bipolar depression and unipolar depression. *J Clin Psychol Med*. 2018;28(4):259–262.
28. Lee CY, Wang LJ, Lee Y, et al. Differentiating bipolar disorders from unipolar depression by applying the brief assessment of cognition in affective disorders. *Psychol Med*. 2018;48(6):929–938. doi:10.1017/S003329171700229X

## Neuropsychiatric Disease and Treatment

Dovepress

### Publish your work in this journal

Neuropsychiatric Disease and Treatment is an international, peer-reviewed journal of clinical therapeutics and pharmacology focusing on concise rapid reporting of clinical or pre-clinical studies on a range of neuropsychiatric and neurological disorders. This journal is indexed on PubMed Central, the 'PsycINFO' database and CAS, and is the official journal of The International Neuropsychiatric Association (INA). The manuscript management system is completely online and includes a very quick and fair peer-review system, which is all easy to use. Visit <http://www.dovepress.com/testimonials.php> to read real quotes from published authors.

Submit your manuscript here: <https://www.dovepress.com/neuropsychiatric-disease-and-treatment-journal>