

Quantum Dot-Based Immunofluorescent Imaging of Ki67 and Identification of Prognostic Value in HER2-Positive (Non-Luminal) Breast Cancer [Erratum]

Sun J, Chen C, Jiang G, Tian W, Li Y, Sun S. *Int J Nanomedicine*. 2014;9(1):1339–1346.

An error during the preparation of Figure 3 for publishing led to the inadvertent creation of a duplicate region in figure part 3A on page 1342. The journal wishes to apologise for this error. The correct version of Figure 3 is shown below.

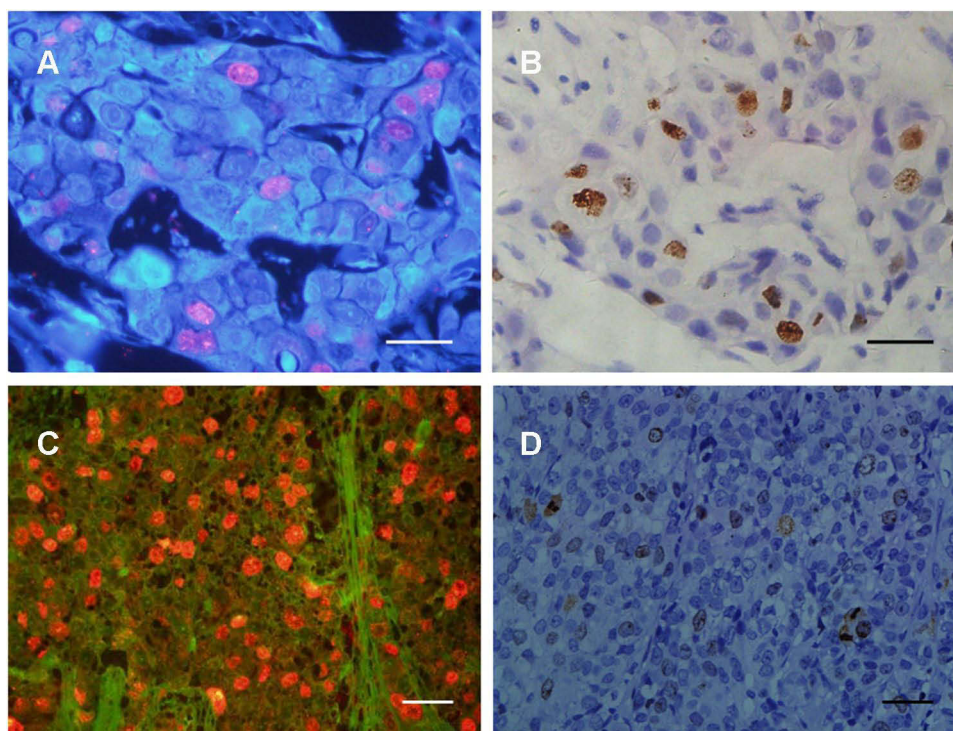


Figure 3 The different Ki67 expressions detected by QD-IHC (A and C) and IHC (B and D) in the same specimens.

Notes: (A and B) are the same specimens; (C and D) are the same specimens. Scale bar: 25 μ m.

Abbreviations: IHC, immunohistochemistry; QD-IHC, quantum dot-immunohistochemistry.