

# Development and Validation of a Nomogram for Predicting Risk of Emergency Department Revisits in Chinese Older Patients

Lijun Fan<sup>1,2</sup>, Hui Xue<sup>1</sup>, Qian Wang<sup>3</sup>, Yuhan Yan<sup>4</sup>, Wei Du<sup>1</sup>

<sup>1</sup>School of Public Health, Southeast University, Nanjing, People's Republic of China; <sup>2</sup>School of Public Health, Sun Yat-sen University, Guangzhou, People's Republic of China; <sup>3</sup>Guangdong Provincial Geriatrics Institute, Guangdong Provincial People's Hospital, Guangdong Academy of Medical Sciences, Guangzhou, People's Republic of China; <sup>4</sup>General Hospital of Eastern Theater Command, Nanjing, People's Republic of China

Correspondence: Wei Du, School of Public Health, Southeast University, Nanjing, 210009, People's Republic of China, Email [duwei@seu.edu.cn](mailto:duwei@seu.edu.cn); Yuhan Yan, General Hospital of Eastern Theater Command, Nanjing, 210009, People's Republic of China, Email [yanyuhan0215@163.com](mailto:yanyuhan0215@163.com)

**Objective:** The identification of older patients at risk of repeated emergency department (ED) visits is crucial for managing preventable adverse outcomes. This study aims to identify risk factors associated with ED revisits and to develop and validate a nomogram for predicting risk of geriatric ED revisits.

**Methods:** This was a cohort study comprising 553 older patients, who attended the two tertiary hospitals EDs in China from August 2018 to February 2019 and were prospectively followed for any unplanned revisit within 1 year after discharge. Patients were randomly assigned to a training or validation set at a ratio of 2:1. Stepwise selection procedure was applied to select factors associated with ED revisits for inclusion in a multivariable logistic model from which a nomogram was elaborated. Discrimination, calibration and clinical utility of the nomogram were assessed using C-statistic, calibration plot, Hosmer-Lemeshow test, and decision curve analysis (DCA).

**Results:** The final nomogram included four predictors for ED revisits: age, BMI, frailty and polypharmacy. Older patients having revisits were more likely to be frail (OR = 1.17,  $p = 0.031$ ), have polypharmacy (OR = 1.69,  $p = 0.049$ ) or BMI  $<18.5 \text{ kg/m}^2$  (OR = 2.45,  $p = 0.025$ ), and were less likely to be older than 90 years (OR = 0.21,  $p = 0.002$ ). The nomogram demonstrated acceptable discrimination ability in the training (C-index = 0.661) and validation sets (C-index = 0.651), satisfactory calibration ( $p > 0.05$ ), and good clinical applicability.

**Conclusion:** A nomogram incorporating four obtainable variables was constructed to individualize ED readmission risk in older patients. These patients may benefit from early triage and better-targeted care if considering the nomogram as a clinical decision aid.

**Keywords:** nomogram, risk prediction, emergency department revisit, acute care, older adults

## Introduction

Geriatric emergency department (ED) visits and repeat visits place a substantial burden on healthcare systems worldwide. Older people represent disproportionately frequent users of hospital ED care. They accounted for up to 30% of all ED presentations globally,<sup>1</sup> and this proportion is continuously increasing in the context of unprecedented population ageing. Moreover, older people presenting to EDs often exhibit unique and complex clinical characteristics, and they are often accompanied by geriatric conditions such as multimorbidity, frailty and polypharmacy. As a result, this could increase the difficulty of acute diagnosis or treatment and make older patients susceptible to adverse health outcomes after discharge.<sup>2,3</sup> The hospital EDs, however at present, are still not specifically equipped to deal with the unique acute care needs from geriatric patients. Emergency settings that focus on prompt assessment and rapid decision-making are usually stressful for healthcare professionals and patients,<sup>4</sup> and the quality and continuity of geriatric ED services are sometimes defective owing to failure to recognize and appropriately manage geriatric syndromes.<sup>2</sup> Older population,

compared with their younger counterparts, are therefore more likely to subsequently experience health adversities and make repeated visits to EDs.<sup>2</sup>

ED revisits are a phenomenon attracting increasing clinical and research attention. Repeated ED attendances are considered indicative of ongoing patient needs that are not being adequately addressed by initial ED treatment, transitional care arrangements following discharge, or subsequent local community-based services.<sup>5,6</sup> The risk of unscheduled ED revisits by older adults is approximately two or three times as high as that for younger adults.<sup>7</sup> Previous literature reported that up to 22% of older patients had a ED return visit within 1 month after discharge,<sup>1</sup> and that 25%, 38%, 49%, and 60% of patients over 75 years were readmitted to EDs at 1, 3, 6, and 12 months, respectively.<sup>8</sup> Unplanned re-attendances to hospital EDs are likely to result in adverse events for older patients such as functional decline, mortality and increased healthcare costs,<sup>9</sup> and may also aggravate the global challenge of ED overcrowding that is further linked to diminished efficiency, quality and safety of emergency care.<sup>1</sup> Repeated ED visits by older people are indeed often avoidable or preventable, if better care management and appropriate geriatric interventions are readily in place;<sup>2,8,10</sup> the identification of older patients at risk of ED revisits has thus become a priority, which can thereafter help to prevent undesirable outcomes.

Older adults with repeated attendances to EDs represent a high-risk population with specific characteristics, and risk assessment tools for their ED revisits can highlight the opportunity to predict future emergency resource utilization based on past available information as well as allow patient triage to facilitate personalized health interventions. Although extensive literature has well documented various risk factors for ED returns in older adults including sociodemographic characteristics, health behaviors, chronic conditions, clinical features, body mass index (BMI) and physical performance measures,<sup>9,11–14</sup> studies attempting to integrate multiple factors and construct clinical prediction tools to individualize ED revisit risk still remain scarce. To date, only a few studies have reported on ED-revisit prediction models in older persons,<sup>5,7,15–19</sup> among which the Identification of Seniors At Risk (ISAR) and the Triage Risk Screening Tool (TRST) are the two most frequently validated tools. However, the existing tools were rarely conducted in Asian countries including China, and were sometimes limited by focusing on specific-disease related emergency revisits instead of all-cause revisits, composite outcomes inclusive of emergency revisits, patients with particular disease or condition, only dichotomizing patients into high/low risks rather than quantifying the estimated risks, or a short time frame immediately following discharge. Nomogram, a visualized prediction tool for quantifying the probabilities of each individual experiencing specific clinical events of interest based on statistical regression equations, has been recently widely applied in clinical settings due to its visual and mathematical advantages but has not yet been adequately explored in the area of ED-revisit estimation.<sup>20,21</sup> The present study thus aims to identify risk factors influencing 1-year ED revisits, and to develop and validate a nomogram as a clinical prediction tool for estimating ED revisits probability in older patients.

## Materials and Methods

### Study Design and Population

This 1-year prospective cohort study was conducted and reported in accordance with the Transparent Reporting of a Multivariable Prediction Model for Individual Prognosis or Diagnosis (TRIPOD) Statement.<sup>22</sup> Subjects were selected using convenience sampling from the EDs at two tertiary hospitals in Guangzhou and Nanjing of China during the period from August 2018 to February 2019, and were interviewed through a structured face-to-face questionnaire by trained investigators. Patients with the following characteristics were included: 1) aged 60 years or above; 2) attended the hospital ED for treatment; 3) be accompanied by a knowledgeable caregiver. The exclusion criteria were patients with end-stage illnesses, inability to complete the questionnaire or refusal to participate. We recruited 745 patients from the baseline survey, and followed them for one consecutive year. After excluding subjects reporting missing baseline data and who were dead or lost to follow up, a total of 553 older patients remained and were eligible for analysis. The eligible patients were then randomly assigned to either the training set (n=369) or validation set (n=184) at a ratio of 2:1. A multivariable prediction model was developed based on the training cohort and further validated in the validation cohort. The study protocol was reviewed and approved by the institutional ethics review committee, and informed consent was obtained from each patient or their legal representative.

## Measures

### Primary Outcome

The primary outcome was any revisits to hospital emergency department within the one-year period of discharge, which was collected through follow-up phone calls. If the patients discharged from ED had at least one ED return visit within 1 year, they were classified as patients with one-year ED revisit.

### Candidate Predictors

The presumptive nomogram predictors were potential factors associated with ED revisit in older patients selected based on previous literature and in consideration of accessibility in acute care setting. Candidate predictors covered the socio-demographics, lifestyle, functional status, geriatric parameters and illness conditions of patients, including age, gender, residence, marital status, educational attainment, household income per capita, health insurance, smoking, drinking, nutrition, fruit consumption, vegetable consumption, milk consumption, living arrangement, social isolation, sleep problem, BMI, life satisfaction, frailty status, polypharmacy, comorbidity, hypertension, diabetes, stroke, activities of daily living (ADL) limitation. A detailed description of candidate predictors can be found in [Supplementary Table S1](#).

## Statistical Analysis

Descriptive statistics were used to summarize baseline characteristics, where categorical variables were presented as numbers (percentages) and continuous variables were expressed as median (25–75% interquartile). Chi-square test or Mann–Whitney test was used to assess differences in the distribution of variables between training and validation cohorts. Univariable logistic analysis was performed in the training set to identify significant variables ( $p < 0.1$ ) for further multivariable analysis. The final multivariable regression model was built from a set of candidate variables using backward stepwise selection procedure, and the results were expressed as odds ratios (ORs) with 95% confidence intervals (CIs). A nomogram for predicting the probability of 1-year ED revisit was then elaborated based on the independent risk factors identified in the final multivariable model.

Nomogram performance was assessed in both the training and validation cohorts by the area under the receiver operating characteristic curve (AUC) or Harrell's C-statistic as a measure of discriminative ability, a calibration plot as an indicator of internal calibration and the Hosmer-Lemeshow test to evaluate goodness of fit. Decision curve analysis (DCA) was further applied to determine the clinical utility of the nomogram by quantifying the net benefits at different threshold probabilities in both datasets. Data analyses were performed with Stata software (version 16.0), and differences were considered significant at two-tailed  $p < 0.05$ .

## Results

### Participant Characteristics

Of the 553 enrolled participants, the mean (sd) age was 77.2 (8.5) years and 47.6% were female. Revisits to hospital EDs within one year following initial discharge were recorded in 268 (48.5%) older patients. [Table 1](#) displays the baseline

**Table 1** Baseline Characteristics of Patients in the Training and Validation Sets

Variables <sup>a</sup>	Training Cohort (n=369)	Validation Cohort (n=184)	p value <sup>b</sup>
Age			0.706
60–75 years	159 (43.09)	73 (39.67)	
75–90 years	182 (49.32)	98 (53.26)	
≥90 years	28 (7.59)	13 (7.07)	
Gender			0.653
Male	191 (51.76)	99 (53.80)	
Female	178 (48.24)	85 (46.20)	

(Continued)

Table 1 (Continued).

Variables <sup>a</sup>	Training Cohort (n=369)	Validation Cohort (n=184)	p value <sup>b</sup>
Residence			0.909
Rural	70 (18.97)	36 (19.57)	
Urban	299 (81.03)	148 (80.43)	
Marital status			0.990
Married	317 (85.91)	158 (85.87)	
Others	52 (14.09)	26 (14.13)	
Educational attainment			0.532
Primary school and below	131 (35.50)	68 (36.96)	
Middle school	97 (26.29)	45 (24.46)	
High school	73 (19.78)	44 (23.91)	
Above high school	68 (18.43)	27 (14.67)	
Household income per capita			0.805
<3000 yuan/month	144 (39.02)	73 (39.67)	
3000–5000 yuan/month	107 (29.00)	57 (30.98)	
>5000 yuan/month	118 (31.98)	54 (29.35)	
Health insurance			0.545
No	7 (1.90)	5 (2.72)	
Yes	362 (98.10)	179 (97.28)	
Smoking			0.587
Never	250 (67.75)	118 (64.13)	
Previous	78 (21.14)	46 (25.00)	
Current	41 (11.11)	20 (10.87)	
Drinking			0.175
Never	278 (75.34)	134 (72.83)	
Previous	54 (14.63)	37 (20.11)	
Current	37 (10.03)	13 (7.07)	
Nutrition			0.804
Poor	24 (6.50)	10 (5.43)	
Fair	222 (60.16)	108 (58.70)	
Good	123 (33.33)	66 (35.87)	
Fruit consumption			0.919
<1 time/day	231 (62.60)	116 (63.04)	
≥1 time/day	138 (37.40)	68 (36.96)	
Vegetable consumption			0.479
<1 time/day	103 (27.91)	46 (25.00)	
≥1 time/day	266 (72.09)	138 (75.00)	
Milk consumption			0.457
<1 time/day	235 (63.69)	111 (60.33)	
≥1 time/day	134 (36.31)	73 (39.67)	
Living arrangement			0.787
Living with others	336 (91.06)	169 (91.85)	
Living alone	25 (6.78)	10 (5.43)	
Nursing homes	8 (2.17)	5 (2.72)	
Social isolation			0.301
No	242 (65.58)	112 (60.87)	
Yes	127 (34.42)	72 (39.13)	
Sleep problems			0.145
No	148 (40.11)	86 (46.74)	
Yes	221 (59.89)	98 (53.26)	

(Continued)

Table 1 (Continued).

Variables <sup>a</sup>	Training Cohort (n=369)	Validation Cohort (n=184)	p value <sup>b</sup>
BMI (kg/m <sup>2</sup> )			0.679
<18.5	37 (10.03)	16 (8.70)	
18.5–24	200 (54.20)	107 (58.15)	
≥24	132 (35.77)	61 (33.15)	
Life satisfaction			0.822
Poor	102 (27.64)	55 (29.89)	
Fair	97 (26.29)	49 (26.63)	
Good	170 (46.07)	80 (43.48)	
Frailty index, median (IQR)	0.19 (0.10–0.36)	0.19 (0.11–0.36)	0.631
Polypharmacy			0.548
No	268 (72.63)	129 (70.11)	
Yes	101 (27.37)	55 (29.89)	
Comorbidity			0.253
No	303 (82.11)	143 (77.72)	
Yes	66 (17.89)	41 (22.28)	
Hypertension			0.927
No	159 (43.09)	78 (42.39)	
Yes	210 (56.91)	106 (57.61)	
Diabetes			0.932
No	264 (71.54)	131 (71.20)	
Yes	105 (28.46)	53 (28.80)	
Stroke			0.112
No	331 (89.70)	173 (94.02)	
Yes	38 (10.30)	11 (5.98)	
ADL limitation			0.849
No	245 (66.40)	120 (65.22)	
Yes	124 (33.60)	64 (34.78)	
1-year ED revisit			0.928
No	191 (51.76)	94 (51.09)	
Yes	178 (48.24)	90 (48.91)	

**Notes:** <sup>a</sup>Data are presented as n (%) of participants unless otherwise stated. <sup>b</sup>p values for characteristic differences among training cohort versus validation cohort were calculated by  $\chi^2$  test (for categorical variables) or Mann–Whitney test (for continuous variables).

**Abbreviations:** IQR, interquartile range; BMI, body mass index; ADL, activities of daily living.

characteristics in the training and validation cohorts. The distribution of characteristics was generally similar between the 369 participants in the training set and the 184 participants in the validation set (all  $p>0.05$ ).

## Predictor Variables

Before constructing the nomogram, candidate risk factors were evaluated using univariable and multivariable analyses in the training cohort (Table 2). In univariable analysis, nine variables were identified as factors significantly associated with ED revisits ( $p<0.1$ ), including age, gender, educational attainment, health insurance, social isolation, BMI, life satisfaction, frailty and polypharmacy, which were selected for further multivariable analysis. Then, following the backward stepwise selection procedure, four significant predictors including age, BMI, frailty index and polypharmacy remained and were included in the final multivariable model for construction of the risk prediction model ( $p<0.05$ ). Results showed that older patients having revisits to EDs within 1-year period were less likely to be older than 90 years (OR=0.21, 95% CI=0.08–0.56;  $p=0.002$ ) and were more likely to have a BMI<18.5 kg/m<sup>2</sup> (OR=2.45, 95% CI=1.12–5.34;  $p=0.025$ ), have polypharmacy (OR=1.69, 95% CI=1.00–2.83;  $p=0.049$ ) or be frail (OR=1.17, 95% CI=1.02–1.35;  $p=0.031$ ) (Table 2).

**Table 2** Univariable and Stepwise Multivariable Analyses of Risk Factors for 1-Year Emergency Department Revisits in the Training Cohort

Variables	Univariable Analysis		Multivariable Analysis	
	OR (95% CI)	p value	OR (95% CI)	p value
Age				
60–75 years	Reference		Reference	
75–90 years	0.99 (0.65–1.51)	0.954	0.69 (0.42–1.11)	0.121
≥90 years	0.33 (0.13–0.82)	0.017**	0.21 (0.08–0.56)	0.002***
Gender (female vs male)	1.43 (0.95–2.15)	0.090*	Not selected	
Residence (urban vs rural)	1.13 (0.67–1.91)	0.639		
Marital status (others vs married)	0.91 (0.50–1.63)	0.746		
Educational attainment			Not selected	
Primary school and below	Reference			
Middle school	0.96 (0.57–1.62)	0.866		
High school	0.70 (0.39–1.25)	0.227		
Above high school	0.59 (0.33–1.07)	0.084*		
Household income per capita				
<3000 yuan/month	Reference			
3000–5000 yuan/month	1.24 (0.75–2.05)	0.402		
>5000 yuan/month	0.86 (0.53–1.40)	0.534		
Health insurance (yes vs no)	0.15 (0.02–1.27)	0.081*	Not selected	
Smoking				
Never	Reference			
Previous	1.37 (0.83–2.29)	0.222		
Current	0.79 (0.41–1.55)	0.495		
Drinking				
Never	Reference			
Previous	0.96 (0.53–1.71)	0.879		
Current	0.70 (0.35–1.41)	0.319		
Nutrition				
Poor	Reference			
Fair	0.86 (0.37–2.01)	0.730		
Good	0.64 (0.27–1.54)	0.321		
Fruit consumption (≥1 vs <1 time/day)	0.74 (0.48–1.13)	0.158		
Vegetable consumption (≥1 vs <1 time/day)	1.04 (0.66–1.64)	0.873		
Milk consumption (≥1 vs <1 time/day)	0.97 (0.64–1.48)	0.890		
Living arrangement				
Living with others	Reference			
Living alone	1.15 (0.51–2.59)	0.737		
Nursing homes	0.35 (0.07–1.78)	0.207		
Social isolation (yes vs no)	1.45 (0.94–2.23)	0.090*	Not selected	
Sleep problems (yes vs no)	1.34 (0.88–2.03)	0.175		
BMI (kg/m <sup>2</sup> )				
<18.5	2.56 (1.20–5.46)	0.015**	2.45 (1.12–5.34)	0.025**
18.5–24	Reference		Reference	
≥24	0.80 (0.51–1.24)	0.319	0.76 (0.48–1.21)	0.248
Life satisfaction			Not selected	
Poor	Reference			
Fair	0.66 (0.38–1.15)	0.143		
Good	0.50 (0.31–0.83)	0.007***		
Frailty index (every 0.1 score increase)	1.15 (1.02–1.29)	0.021**	1.17 (1.02–1.35)	0.031**
Polypharmacy (yes vs no)	1.86 (1.17–2.96)	0.009***	1.69 (1.00–2.83)	0.049**
Comorbidity (yes vs no)	1.17 (0.69–2.00)	0.557		

(Continued)

Table 2 (Continued).

Variables	Univariable Analysis		Multivariable Analysis	
	OR (95% CI)	p value	OR (95% CI)	p value
Hypertension (yes vs no)	1.29 (0.85–1.95)	0.231		
Diabetes (yes vs no)	0.82 (0.52–1.30)	0.400		
Stroke (yes vs no)	0.96 (0.49–1.88)	0.910		
ADL limitation (yes vs no)	1.23 (0.80–1.89)	0.356		

Notes: \* $p < 0.1$ , \*\* $p < 0.05$ , \*\*\* $p < 0.01$ .

Abbreviations: OR, odds ratio; CI, confidence interval; BMI, body mass index; ADL, activities of daily living.

## Model Development

The nomogram established based on the final multivariable model is presented in Figure 1. In the nomogram, a score was assigned on the point scale for each subtype of these variables (namely, age, BMI, frailty index and polypharmacy) included in the nomogram, and the total score was calculated as the sum of the score of each variable. The probability of 1-year ED revisit for each individual can then be estimated by drawing a vertical line from the total score up to the risk line, where higher total points represented a greater probability of ED revisit.

## Model Performance

Figure 2 depicts the results of nomogram performance in terms of its discrimination and calibration ability in both the training and validation sets. As shown in Figure 2A and C, ROC curves were constructed and the AUC values of the nomogram were 0.661 (95% CI=0.605–0.716) and 0.651 (95% CI=0.572–0.730) for the training and validation cohorts,

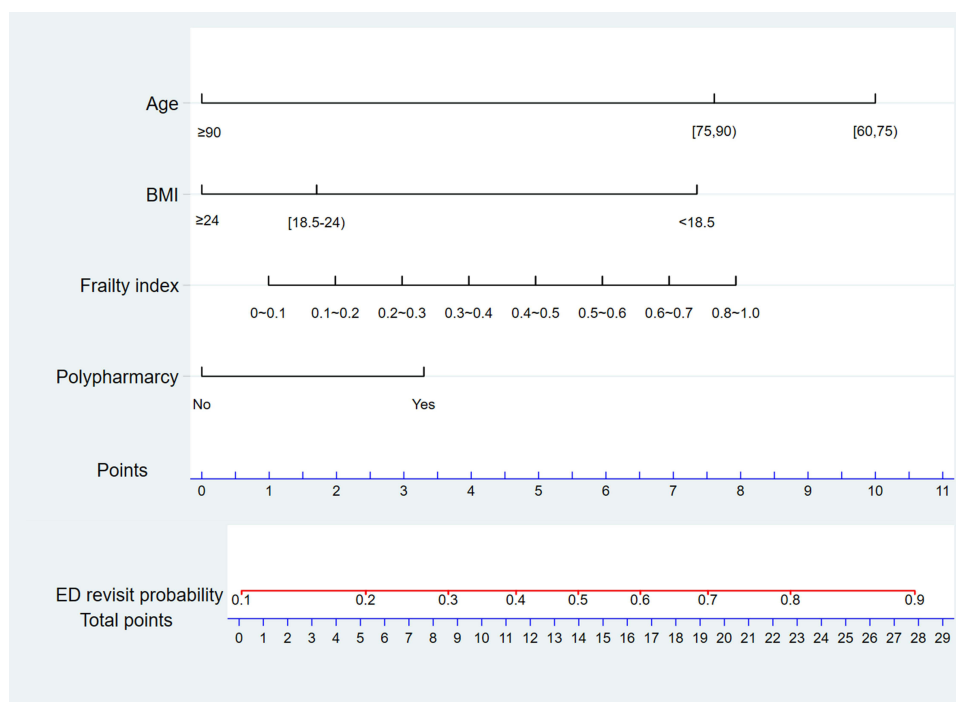
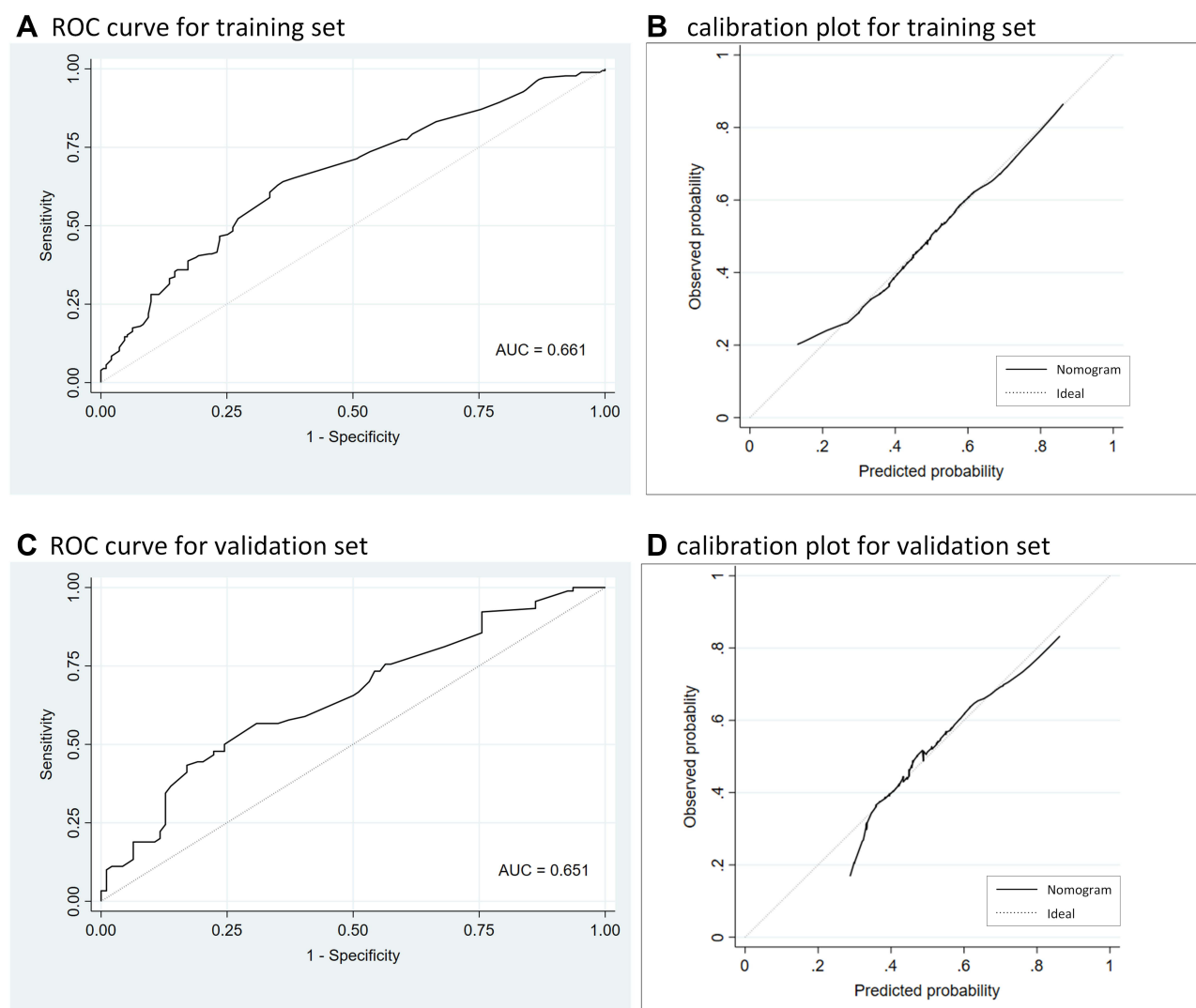


Figure 1 Nomogram to estimate risk of emergency department revisits in older patients.

Notes: The nomogram incorporates age, BMI, frailty index and polypharmacy to estimate the probability of 1-year ED revisit for a given patient. To use the nomogram, drawing a vertical line from the scale of each variable downward to the Points axis and then recording the corresponding point associated with that scale. Summing up the point of each variable and locating this sum on the Total points axis at the bottom of nomogram. Then drawing a vertical line up to the Probability axis to read off the estimated probability of 1-year ED revisit.

Abbreviation: ED, emergency department.





**Figure 2** Receiver operating characteristic curves and calibration plots for the nomogram.

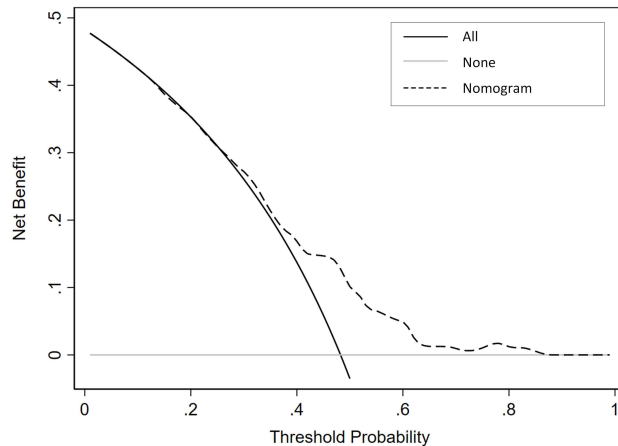
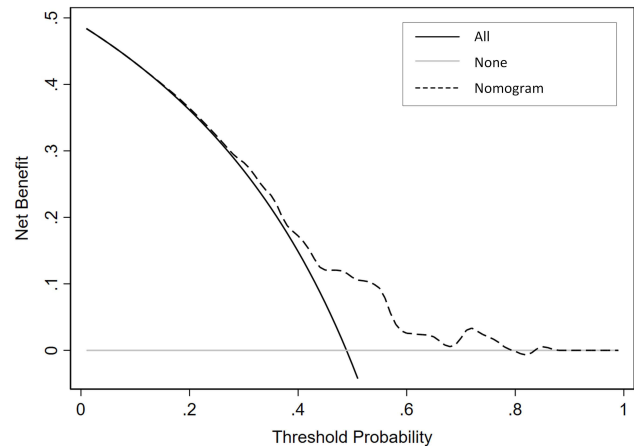
**Notes:** ROC curves and calibration plots for the nomogram in the training (**A** and **B**, respectively) and validation cohorts (**C** and **D**, respectively) are presented. In the calibration plot, the horizontal axis was the ED revisit rate predicted by the nomogram, and the vertical axis was the actual or observed ED revisit rate; the dashed line indicates that the predicted probability completely fits the actual probability, and the black solid line shows the actual performance of the nomogram; if the calibration curve of the nomogram is close to the 45-degree line, it shows good agreement between nomogram-based prediction and actual observation.

**Abbreviations:** ROC, receiver operating characteristic; AUC, area under the receiver operating characteristic curve.

respectively, indicating moderate discriminative ability. The calibration plots (Figure 2B and D) showed good agreement between prediction and observation in both sets (close to the 45-degree line), with mean predicted probabilities based on the proposed nomogram close to observed actual probabilities of 1-year ED revisits. The calibration ability was further supported by the Hosmer-Lemeshow test with non-significant  $p$  values (training cohort:  $\chi^2=5.43$ ,  $p=0.861$ ; validation cohort:  $\chi^2=8.51$ ,  $p=0.579$ ), suggesting that the nomogram was well-calibrated and provided a good fit of the data.

Furthermore, DCA curves were drawn to illustrate the clinical applicability of the nomogram (Figure 3). The decision curves revealed the nomogram as possessing superior net benefits at a wide range of threshold probabilities, suggesting its clinical usefulness. When the threshold probability of an individual was approximately between 0.25 and 0.80 in both cohorts, using the proposed nomogram model to predict 1-year ED revisit risk added more benefit than either the treat-all tactics or the treat-none tactics.



**A** DCA for training set**B** DCA for validation set

**Figure 3** Decision curves analysis for the nomogram in training and validation cohorts.

**Notes:** Decision curves analyses for the nomogram in the **(A)** training set and **(B)** validation set are presented. The net benefit (y-axis) was plotted versus the threshold probability (x-axis). The dark solid line depicts the net benefit of the proposed nomogram; the grey solid line and dark dash line represent the net benefit of strategies assuming that all patients (treat-all) and no patient had ED revisit (treat-none), respectively.

**Abbreviation:** DCA, decision curves analysis.

## Discussion

To the best of our knowledge, this is the first attempt to establish a risk prediction model to individualize the probability of 1-year ED revisits for older adults in China. In our study, the enrolled older patients experienced ED revisits at a high rate of 48.5% over the course of 1 year after discharge, suggesting that geriatric ED returns are frequent and common. Previous literature reported similar rates of 1-year ED revisits by older patients as in our study, documenting that the rate exceeded 40% at 1 year in some settings.<sup>23</sup> Other studies reported even higher rates possibly owing to their different focuses on populations with older age or affected by particular diseases, for instance, the rate was recorded as 60% among patients over 75 years<sup>8</sup> or was two-thirds (66.1%) among community-dwelling older adults living with dementia.<sup>24</sup> The exact reasons for high ED-return rates in older patients are uncertain, but may depend on potential factors such as poor quality of care or medical errors at the initial ED visit, patient's chronic medical conditions with high relapse possibilities, and inadequate primary care or continuity of care.

Our study developed and internally validated a ED risk nomogram integrating four predictors including age, BMI, frailty and polypharmacy. Results based on both training and validation cohorts indicated that our nomogram was effective with regard to its moderate discrimination, satisfactory calibration, and good clinical applicability. The risk prediction models for ED revisits in older adults were also reported in prior studies, although many of them evaluated ED-return risk within a shorter period after discharge and did not specifically calculate the probability. For example, ISAR (consisting of six assessment items: presence of home help, increased dependency, recent hospitalization, impaired vision, impaired memory, and polypharmacy)<sup>8,19,25,26</sup> and TRST (including six items: cognitive impairment, living alone or no caregiver, difficulties with walking or transfer, recent ED admission or hospitalization, polypharmacy, and professional recommendation)<sup>8,15,16</sup> were the two most studied tools to detect high-risk patients for unplanned ED revisits, both of which produced similar discriminative ability as in our nomogram. These two tools, however, were disadvantaged because they can only dichotomize patients into high/low risks but cannot calculate an estimated percentage chance of revisit. We identified only two available prediction tools capable of providing risk probability: one was the LACE index developed among older UK patients, which unfortunately was a poor predictor of 30-day ED readmission with c-statistics of 0.55;<sup>18</sup> the other was a nomogram established among Australian older patients with acceptable c-statistics of 0.65, which incorporated age, polypharmacy, cognitive impairment and depression to predict 28-day ED revisit.<sup>5,17</sup> Nevertheless, the aforementioned tools were all limited to western countries and relatively few were conducted in Asian countries including China. We identified only one relevant study by Chen et al that established

a prediction model for 72-hour unscheduled ED return visits in Taiwan, showing that economic status, chronic illness, and ED length of stay were the top three variables influencing revisits.<sup>7</sup>

We identified age, BMI, frailty and polypharmacy as key factors contributing to the risk of 1-year ED repeat visits among older adults, and these variables predicting geriatric ED revisits have also been reported in previous literature. Our results showed that older patients with polypharmacy ( $\geq 5$  drugs) or frailty were more likely to have repeated ED visits, which is generally consistent with prior studies.<sup>5,9,27–29</sup> Plausible explanations for such findings included that: 1) polypharmacy often indicates the presence of underlying multiple health problems, which may complicate or interrupt the conventional ED treatment and hence increase compensated healthcare needs; 2) frailty represents a comprehensive geriatric syndrome and is known to be associated with increased risks of subsequent adverse outcomes such as disability, falls and fractures, pain, and hospitalization,<sup>30–32</sup> all of which may consequently result in excessive reliance on EDs. Meanwhile, our study found that age  $\geq 90$  was associated with a reduced risk of 1-year ED revisits. Although previous evidence reached consensus that older adults encountered more ED returns when compared with younger adults, the increasing age, within the spectrum of the older population, has yet demonstrated contradictory results. Some studies coincided with our finding that the oldest old were less prone to re-visit,<sup>33–35</sup> whereas others concluded that the likelihood of returning to EDs increased concurrently with advancing age.<sup>5,11,13,28</sup> Such inconsistencies in the age effect highlight the importance of considering factors that can more accurately reflect biological or functional age (eg, frailty) rather than simply chronological age in the geriatric population evaluation. Exact reasons behind this counterintuitive result of advanced age are uncertain, but possible explanations are that oldest-old patients may be less likely to receive intensive or invasive types of acute treatment during initial ED visit, and that such patients discharged from EDs may be transferred to a nursing home with provision of basic care or have died within a short period, altogether contributing to reduced ED revisits. Besides, underweight BMI of  $<18.5$  kg/m<sup>2</sup> compared to normal BMI was demonstrated as a risk factor for geriatric ED revisits in our study. BMI was less often evaluated previously, and we identified only one prior article documenting that obese BMI led to significantly increased ED risk.<sup>14</sup> Our finding on BMI is not unexpected because underweight or unexpected weight loss in older adults are often reported as associated with declined health and poor recovery from treatment.<sup>36,37</sup>

The nomogram developed in our study has potential clinical use and provides important implications for future geriatric care and research. On the one hand, the identification of ED-revisit predictors (age, BMI, frailty and polypharmacy) may remind clinical or public health efforts to concertededly work on minimizing the influence of such risk factors. Taking frailty as an example, the current disease-oriented and episodic models of emergency care are incapable of adequately responding to the complex care needs of frail older patients, it is suggested based on our results to move towards a better identification and management of frailty in community-dwelling older adults as well as to integrate frailty into acute care assessment among older patients to aid clinical decision-making and develop appropriate treatment plans. On the other hand, our prediction tool may facilitate the individualized prediction of ED repeated visits, which allows clinicians to identify a subset of older patients at high risk of emergency resource reliance or at greatest need for targeted interventions and re-think the most appropriate care for this particular population group. This may empower ED professionals and other healthcare providers to deliver evidence-based stratified and personalized acute care, design a coordinated and integrated plan for intensive long-term follow up post discharge, and develop a support system with better-targeted and patient-centered community services, thereby improving older patients' clinical outcomes and reducing potentially avoidable ED representations.

## Limitations

Several limitations should be acknowledged in our study. First, although our nomogram incorporated an extensive range of patient-related predictors, physician-related and medical institution-related risk factors for ED revisits are currently unavailable in the study. Second, training and validation samples were drawn from the same cohort, thus our nomogram should continue to be externally validated and updated as additional data become available. Third, the outcome was any revisit to EDs within 1-year of discharge, but we did not address the appropriateness or features of these re-attendances. Fourth, our work was conducted in two hospital sites with relatively small sample size, which may constrain the

generalizability of research findings to a broader population. Last, the nomogram we developed to predict ED revisits has not been subjected to a formal trial of its capacity to decrease ED length of stay or improve health outcomes.

## Conclusion

In conclusion, a nomogram incorporating four obtainable variables was constructed to individualize ED revisits risk among older patients in China. Further studies are still warranted to validate this nomogram among larger samples or culturally diverse populations and to evaluate whether nomogram-based personalized interventions can improve treatment efficacy or reduce adverse outcomes. Our nomogram may serve as a clinical decision aid to identify older population with higher risk of ED re-attendances, and when possible, to facilitate implementation of better-targeted acute care during initial ED visits or comprehensive community-based services including primary care and home care.

## Data Sharing Statement

The data are available upon request from the corresponding author at [duwei@seu.edu.cn](mailto:duwei@seu.edu.cn).

## Ethical Approval

The study was conducted in accordance with the declaration of Helsinki and approved by the ethics committee of Sun Yat-sen University ([2017]001). All participants provided written informed consents prior to their enrollment.

## Acknowledgments

The authors gratefully acknowledge the hospitals and all participants involved in this survey.

## Author Contributions

All authors made a significant contribution to the work reported, whether that was in the conception, study design, execution, acquisition of data, analysis and interpretation, or in all these areas; took part in drafting, revising or critically reviewing the article; gave final approval of the version to be published; have agreed on the journal to which the article has been submitted; and have agreed to be accountable for all aspects of the work.

## Funding

This work was supported by the Natural Science Foundation of China (NSFC 71704192); the Department of Education of China (No. 1125000172); the Fundamental Research Funds for the Central Universities (2242021R41104, 3225002002A1); and the Zhishan Youth Scholar Program of Southeast University (2019–2021). The funders had no role in study design, data collection, data analysis, data interpretation, or writing of the manuscript.

## Disclosure

The authors declare no conflicts of interest.

## References

1. Schouten B, Driesen BE, Merten H, et al. Experiences and perspectives of older patients with a return visit to the emergency department within 30 days: patient journey mapping. *Eur Geriatr Med.* 2021;13(2):339–350. doi:10.1007/s41999-021-00581-6
2. McCusker J, Ionescu-Ittu R, Ciampi A, et al. Hospital characteristics and emergency department care of older patients are associated with return visits. *Acad Emerg Med.* 2007;14(5):426–433. doi:10.1197/j.aem.2006.11.020
3. Perry AJ, Tejada M, Melady D. An approach to the older patient in the emergency department. *Clin Geriatr Med.* 2018;34(3):299–311. doi:10.1016/j.cger.2018.03.001
4. Quinn TJ, Mooijaart SP, Gallacher K, Burton JK. Acute care assessment of older adults living with frailty. *BMJ.* 2019;364:113–119. doi:10.1136/bmj.113
5. Arendts G, Etherton-Beer C, Jones R, et al. Use of a risk nomogram to predict emergency department reattendance in older people after discharge: a validation study. *Intern Emerg Med.* 2015;10(4):481–487. doi:10.1007/s11739-015-1219-3
6. Jin B, Zhao YF, Hao SY, et al. Prospective stratification of patients at risk for emergency department revisit: resource utilization and population management strategy implications. *BMC Emerg Med.* 2016;16:10–21. doi:10.1186/s12873-016-0074-5

7. Chen RF, Cheng KC, Lin YY, Chang IC, Tsai CH. Predicting unscheduled emergency department return visits among older adults: population-based retrospective study. *JMIR Med Inform*. 2021;9(7):e22491. doi:10.2196/22491
8. Graf CE, Giannelli SV, Herrmann FR, et al. Identification of older patients at risk of unplanned readmission after discharge from the emergency department - comparison of two screening tools. *Swiss Med Wkly*. 2012;141:w13327.
9. de Gelder J, Lucke JA, de Groot B, et al. Predictors and outcomes of revisits in older adults discharged from the emergency department. *J Am Geriatr Soc*. 2018;66(4):735–741. doi:10.1111/jgs.15301
10. Guttman A, Afilalo M, Guttman R, et al. An emergency department-based nurse discharge coordinator for elder patients: does it make a difference? *Acad Emerg Med*. 2004;11(12):1318–1327. doi:10.1197/j.aem.2004.07.006
11. Cande C, Sebbane M, Bobbia X, et al. Risk factors for readmission to the emergency department in patients aged 75 or older: a systematic review. *Geriatr Psychol Neuropsychiatr Vieil*. 2021. doi:10.1684/pnv.2021.0986
12. Silva LO, Jeffery MM, Campbell RL, Mullan AF, Takahashi PY, Bellolio F. Predictors of return visits to the emergency department among different age groups of older adults. *Am J Emerg Med*. 2021;46:241–246. doi:10.1016/j.ajem.2020.07.042
13. Biese K, Massing M, Platts-Mills TF, et al. Predictors of 30-day return following an emergency department visit for older adults. *N C Med J*. 2019;80(1):12–18. doi:10.18043/nmc.80.1.12
14. Takahashi PY, Heien HC, Sangaralingham LR, Shah ND, Naessens JM. Enhanced risk prediction model for emergency department use and hospitalizations in patients in a primary care medical home. *Am J Manag Care*. 2016;22(7):475–483.
15. Meldon SW, Mion LC, Palmer RM, et al. A brief risk-stratification tool to predict repeat emergency department visits and hospitalizations in older patients discharged from the emergency department. *Acad Emerg Med*. 2003;10(3):224–232. doi:10.1197/aemj.10.3.224
16. Lee JS, Schwindt G, Langevin M, et al. Validation of the triage risk stratification tool to identify older persons at risk for hospital admission and returning to the emergency department. *J Am Geriatr Soc*. 2008;56(11):2112–2117. doi:10.1111/j.1532-5415.2008.01959.x
17. Arendts G, Fitzhardinge S, Pronk K, Hutton M, Nagree Y, Donaldson M. Derivation of a nomogram to estimate probability of revisit in at-risk older adults discharged from the emergency department. *Intern Emerg Med*. 2013;8(3):249–254. doi:10.1007/s11739-012-0895-5
18. Cotter PE, Bhalla VK, Wallis SJ, Biram RWS. Predicting readmissions: poor performance of the LACE index in an older UK population. *Age Ageing*. 2012;41(6):784–789. doi:10.1093/ageing/afs073
19. Singler K, Heppner HJ, Skutetzky A, Sieber C, Christ M, Thiem U. Predictive validity of the identification of seniors at risk screening tool in a German emergency department setting. *Gerontology*. 2014;60(5):413–419. doi:10.1159/000358825
20. Balachandran VP, Gonen M, Smith JJ, DeMatteo RP. Nomograms in oncology: more than meets the eye. *Lancet Oncol*. 2015;16(4):e173–e180. doi:10.1016/S1470-2045(14)71116-7
21. Schwab C, Hindlet P, Sabatier B, Fernandez C, Korb-Savoldelli V. Risk scores identifying elderly inpatients at risk of 30-day unplanned readmission and accident and emergency department visit: a systematic review. *BMJ Open*. 2019;9(7):e028302. doi:10.1136/bmjopen-2018-028302
22. Collins GS, Reitsma JB, Altman DG, Moons KGM. Transparent reporting of a multivariable prediction model for individual prognosis or diagnosis (TRIPOD): the TRIPOD statement. *BMJ*. 2015;350:g7594. doi:10.1136/bmj.g7594
23. McCusker J, Cardin S, Bellavance F, Belzile E. Return to the emergency department among elders: patterns and predictors. *Acad Emerg Med*. 2000;7(3):249–259. doi:10.1111/j.1553-2712.2000.tb01070.x
24. Jones A, MacLagan LC, Watt JA, et al. Reasons for repeated emergency department visits among community-dwelling older adults with dementia in Ontario, Canada. *J Am Geriatr Soc*. 2022;70(6):1745–1753. doi:10.1111/jgs.17726
25. Suffoletto B, Miller T, Shah R, Callaway C, Yealy DM. Predicting older adults who return to the hospital or die within 30 days of emergency department care using the ISAR tool: subjective versus objective risk factors. *Emerg Med J*. 2016;33(1):4–9. doi:10.1136/emered-2014-203936
26. Slankamenac K, Haberkorn G, Meyer O, Bischoff-Ferrari HA, Keller DI. Prediction of emergency department re-visits in older patients by the Identification of Senior at Risk (ISAR) screening. *Geriatrics*. 2018;3(3):33. doi:10.3390/geriatrics3030033
27. Huang HH, Chang JC, Tseng CC, et al. Comprehensive geriatric assessment in the emergency department for the prediction of readmission among older patients: a 3-month follow-up study. *Arch Gerontol Geriatr*. 2021;92:104255. doi:10.1016/j.archger.2020.104255
28. Naseer M, Agerholm J, Fastbom J, Schön P, Ehrenberg A, Dahlberg L. Factors associated with emergency department revisits among older adults in two Swedish regions: a prospective cohort study. *Arch Gerontol Geriatr*. 2020;86:103960. doi:10.1016/j.archger.2019.103960
29. Soong J, Poots AJ, Scott S, Donald K, Bell D. Developing and validating a risk prediction model for acute care based on frailty syndromes. *BMJ Open*. 2015;5(10):e008457. doi:10.1136/bmjopen-2015-008457
30. Hoogendijk EO, Afilalo J, Ensrud KE, Kowal P, Onder G, Fried LP. Frailty: implications for clinical practice and public health. *Lancet*. 2019;394(10206):1365–1375. doi:10.1016/S0140-6736(19)31786-6
31. Cesari M, Prince M, Thiagarajan JA, et al. Frailty: an emerging public health priority. *J Am Med Dir Assoc*. 2016;17(3):188–192. doi:10.1016/j.jamda.2015.12.016
32. Fan LJ, Tian Y, Wang JW, et al. Frailty predicts increased health care utilization among community-dwelling older adults: a longitudinal study in China. *J Am Med Dir Assoc*. 2021;22(9):1819–1824. doi:10.1016/j.jamda.2021.01.082
33. Lowthian J, Straney LD, Brand CA, et al. Unplanned early return to the emergency department by older patients: the Safe Elderly Emergency Department Discharge (SEED) project. *Age Ageing*. 2016;45(2):255–261. doi:10.1093/ageing/afv198
34. Sheikh S, Booth-Norse A, Smotherman C, et al. Predicting pain-related 30-day emergency department return visits in middle-aged and older adults. *Pain Med*. 2020;21(11):2748–2756. doi:10.1093/pm/pnaa213
35. Hariman K, Cheng KM, Lam J, Leung SK, Lui SSY. Clinical risk model to predict 28-day unplanned readmission via the accident and emergency department after discharge from acute psychiatric units for patients with psychotic spectrum disorders. *B J Psych Open*. 2020;6(1):e13. doi:10.1192/bjo.2019.97
36. Selvamani Y, Singh P, Fürsinn C. Socioeconomic patterns of underweight and its association with self-rated health, cognition and quality of life among older adults in India. *PLoS One*. 2018;13(3):e0193979. doi:10.1371/journal.pone.0193979
37. Reider L, Hawkes W, Hebel JR, et al. The association between body mass index, weight loss and physical function in the year following a Hip fracture. *J Nutr Health Aging*. 2013;17(1):91–95. doi:10.1007/s12603-012-0073-5

**Risk Management and Healthcare Policy**

Dovepress

**Publish your work in this journal**

Risk Management and Healthcare Policy is an international, peer-reviewed, open access journal focusing on all aspects of public health, policy, and preventative measures to promote good health and improve morbidity and mortality in the population. The journal welcomes submitted papers covering original research, basic science, clinical & epidemiological studies, reviews and evaluations, guidelines, expert opinion and commentary, case reports and extended reports. The manuscript management system is completely online and includes a very quick and fair peer-review system, which is all easy to use. Visit <http://www.dovepress.com/testimonials.php> to read real quotes from published authors.

Submit your manuscript here: <https://www.dovepress.com/risk-management-and-healthcare-policy-journal>