

# Cardiac Abnormalities of People Living with HIV: A Comparative Study Between HAART Experience and Treatment Naïve Groups in Ghana

Isaac Kofi Owusu<sup>1</sup>, Yaw Amo Wiafe<sup>2</sup>, Stephen Opoku<sup>2</sup>, Enoch Odame Anto<sup>2</sup>, Emmanuel Acheamfour-Akowuah<sup>1</sup>

<sup>1</sup>Department of Medicine, School of Medicine and Dentistry, College of Health Sciences, Kwame Nkrumah University of Science and Technology, Kumasi, Ghana; <sup>2</sup>Department of Medical Diagnostics, College of Health Sciences, Kwame Nkrumah University of Science and Technology, Kumasi, Ghana

Correspondence: Isaac Kofi Owusu, Email [ikeowusu@yahoo.com](mailto:ikeowusu@yahoo.com)

**Purpose:** This study determined electrocardiographic and echocardiographic abnormalities of people living with HIV (PLWHIV); comparing the findings of PLWHIV on HAART versus treatment naïve groups.

**Patients and Methods:** In a prospective cross-sectional study, we recruited 157 PLWHIV on Highly Active Antiretroviral Therapy (HAART) and 28 HAART naïve PLWHIV. Clinical examination, electrocardiography and echocardiography were performed on study participants at the Komfo Anokye Teaching Hospital (KATH) in Kumasi, Ghana. Sociodemographic data and information about the use of HAART or otherwise was obtained. The Chi and Fisher Exact tests were used to find the significance of difference in proportions of abnormalities between PLWHIV on HAART and treatment naïve groups. Statistical analyses were performed on SPSS version 25.0 and GraphPad Prism version 8.0. *P*-values less than 0.05 were considered to be statistically significant.

**Results:** Echocardiographic abnormalities in the HAART and treatment naïve groups were 54.1% and 60.7%, respectively. Electrographic abnormalities in the HAART and treatment naïve groups were 45.9% and 50%, respectively. Sinus bradycardia was the most prevalent ECG abnormality in the treatment naïve. Nonspecific T-wave changes (36.1%) and sinus tachycardia (30.6%) were the most common ECG abnormalities seen in HAART treated group. The common echocardiographic abnormalities were pulmonary hypertension (22.7%), pericardial effusion (22.2%) and left ventricular systolic dysfunction (17.8%). There was no significant difference in the proportions of echocardiographic abnormalities between PLWHIV on HAART and the treatment naïve groups (*p* > 0.05).

**Conclusion:** Cardiac abnormalities are common in PLWHIV regardless of treatment with HAART. Echocardiographic and electrographic assessments are highly recommended for all PLWHIV.

**Keywords:** Ghana, echocardiographic abnormalities, electrocardiographic abnormalities, HIV, treatment naïve

## Introduction

Human immunodeficiency virus (HIV) infection is a global epidemic currently affecting about 38 million people worldwide.<sup>1</sup> About 25 million people living with HIV (PLWHIV) are on highly active antiretroviral therapy (HAART), whilst over 12 million people are not receiving HAART.<sup>1</sup> Despite the immense reduction in morbidity and mortality achieved by the introduction of HAART, about 820,000 people died of HIV-related complications in 2020.<sup>1,2</sup>

Cardiovascular disease is reported as one of the main underlying causes of death in PLWHIV affecting about 61% of PLWHIV.<sup>3,4</sup> Cardiac abnormalities in PLWHIV are often unrecognized and may only be detected at autopsy with only about 10% incidence of symptomatic heart failure.<sup>5-7</sup> Routine electrocardiogram (ECG) has therefore been suggested for early detection of cardiac abnormalities in PLWHIV.<sup>8</sup> While some existing studies attribute the prevalence of cardiac disorders in PLWHIV to the increased survival achieved by HAART, a number of studies have also reported cardiac abnormalities in treatment naïve people.<sup>9</sup> Okoye and Anyabolu reported 70% of electrocardiographic (ECG)

abnormalities in treatment naïve PLWHIV in Enugu, Nigeria.<sup>10</sup> Olusegun-Joseph et al also reported 78% echocardiography abnormalities in treatment naïve people in the same region of Nigeria.<sup>11</sup> Comparing ECG findings in HAART treated versus treatment naïve PLWHIV, Njoku et al reported 93% versus 73% ECG abnormalities in PLWHIV on HAART versus treatment naïve PLWHIV, respectively.<sup>12</sup> However, a study in South Africa reported normal ECG and echocardiographic findings in most PLWHIV on HAART and treatment naïve.<sup>13</sup>

This study was done to determine ECG and echocardiographic abnormalities seen in PLWHIV on HAART and the treatment naïve group in Kumasi, Ghana.

## Materials and Methods

### Study Design and Setting

A prospective cross-sectional study was conducted at the HIV clinic of Komfo Anokye Teaching Hospital (KATH), Kumasi, Ghana. The facility has over 1000 bed capacities and serves as a referral center for other hospitals in the middle and northern belts of Ghana. KATH is the second largest teaching hospital in Ghana, and it is one of the biggest centres for the care of PLWHIV.

### Participants Selection and Sampling

In this study, we recruited 157 registered PLWHIV aged 16 years and above who were receiving HAART at the KATH HIV clinic. Twenty-eight (28) treatment naïve PLWHIV who presented for treatment at the hospital over a period of three months were approached for voluntary participation. We excluded patients with prior history of cardiac disorders including those with congenital heart disease, and those who did not consent to participate.

### Ethical Consideration

Ethical clearance (CHRPE/22/10) was obtained from the Committee on Human Research Publication and Ethics of the Kwame Nkrumah University of Science and Technology, Kumasi, Ghana. A thorough explanation of the study protocol and assurance of anonymity was made to the subjects. Written informed consent was also sought from participants and healthcare management before data and sample collection. All methods were carried out in accordance with the Helsinki Declaration.

### Data Collection and Measurement of Echocardiographic and Electrographic

#### Parameters

Standardized and structured questionnaires were used to obtain socio-demographic characteristics, disease history and physical examination findings of all participating PLWHIV. Physical examination performed by the study physician included general assessment, pulse (rate, rhythm, volume and the character), the blood pressure, the apex beat, auscultation for the heart sounds (S1, S2, S3 and S4) and murmurs.

A resting 12 lead ECG was obtained from each participant according to standard procedure and evaluated by the study physician/cardiologists. The ECGs were examined for the heart rate, the rhythm, electrical conduction abnormalities, chamber enlargement, arrhythmias, and other abnormalities.

Transthoracic echocardiography was performed using an eLogic GE ultrasound machine equipped with a 3.5 MHz sector probe. Study participants were examined in the left lateral decubitus position and the procedure followed the joint European Association of Echocardiography and American Society of Echocardiography guidelines.<sup>15</sup> Left ventricular (LV) mass was calculated using the autopsy validated Devereux formula<sup>16</sup> and indexed to the body surface area to determine LV mass index (LVMI). Left ventricular hypertrophy (LVH) was considered to be present when LVMI was >104 g/m<sup>2</sup> in women and >116 g/m<sup>2</sup> in men. LV end-diastolic and systolic volumes were measured using modified Simpson's biplane method and were used to calculate ejection fraction, stroke volume and cardiac output as currently recommended.<sup>15</sup>

### Statistical Analysis

Data from the questionnaires were entered into a Microsoft Excel (2016) spreadsheet and exported to SPSS Windows version 25.0 and GraphPad Prism version 8.0 for statistical analysis. Descriptive analysis of baseline parameters was

performed. Frequencies and percentages were calculated for categorical variables. For continuous data, measures of central tendency using median (interquartile range) and mean were calculated; and measures of spread using standard deviation and range were also calculated. The Chi and Fisher Exact tests were used to find the significance in difference in proportions of abnormalities between HAART-treated PLWHIV and HAART naïve PLWHIV or between Efavirenz (EFF)-based and Nevirapine-based (NVP) regimen. The Mann Whitney *U*-test was used to assess the significance of differences in ECG and echocardiographic parameters between HAART-treated PLWHIV and HAART naïve PLWHIV or between Efavirenz (EFF)-based and Nevirapine-based (NVP) regimen. *P*-values less than 0.05 were considered to be statistically significant for all analyses.

## Results

A total of 185 PLWHIV, consisting of 157 patients on HAART and 28 HAART naïve patients were included in the statistical analysis. The mean ( $\pm$ SD) age of the study participants was 50.5 ( $\pm$ 9.8) years. The majority of the study participants were females (74.1%), more than 40 years (49.2%), had completed basic education (67.0%) and were engaged in some form of employment (78.9%). There was no significant difference in the gender distribution, age category, employment status and educational level between PLWHIV on HAART and the treatment naïve group ( $p > 0.05$ ). Also, there was no significant difference in weight, height, body mass index (BMI), respiratory rate and temperature between PLWHIV on HAART and treatment the naïve group ( $p > 0.05$ ). Table 1 displays the socio-demographic characteristics of the study groups.

**Table 1** Sociodemographic Characteristics of Study Participants

Variable	All Participants	HAART NAIVE HIV Patients (n = 28)	HIV Patients on HAART (n = 157)	p-value
<b>NUMBER OF PARTICIPANTS (%)</b>				
<b>Gender</b>				0.815 <sup>†</sup>
Female	137 (74.1)	20 (71.4)	117 (74.5%)	
Male	48 (25.9)	8 (28.6)	40 (25.5%)	
<b>Age Category (Years)</b>				0.124 <sup>†</sup>
18–30	29 (15.7)	8 (28.6)	21 (13.4)	
31–40	65 (35.1)	8 (28.6)	57 (36.3)	
41 and above	91 (49.2)	12 (42.9)	79 (50.3)	
<b>Occupation</b>				0.075 <sup>†</sup>
Unemployed	39 (21.1)	2 (7.1)	37 (23.6)	
Employed	146 (78.9)	26 (92.9)	120 (76.4)	
<b>Highest Educational Level</b>				0.775 <sup>†</sup>
No Education	46 (24.9)	5 (17.9)	41 (26.1)	
Basic Education	124 (67.0)	20 (71.4)	104 (66.2)	
Senior High School	9 (4.9)	2 (7.1)	7 (4.5)	
Tertiary Education	6 (3.2)	1 (3.6)	5 (3.2)	
<b>MEDIAN (INTERQUATILE RANGE)</b>				
Weight (Kg)	53.0 (46.00–60.00)	53.50 (43.28–63.25)	52.60 (46.00–60.00)	0.812 <sup>‡</sup>
Height (cm)	160.0 (154.00–165.00)	160.00 (154.00–167.25)	160.00 (155.00–164.50)	0.848 <sup>‡</sup>
BMI (Kg/m <sup>2</sup> )	20.3 (18.00–23.44)	20.89 (17.83–24.83)	20.32 (18.00–23.25)	0.648 <sup>‡</sup>
Respiratory Rate (minutes)	20.00 (19.00–20.00)	20.00 (18.00–21.00)	20.00 (20.00–20.00)	0.997 <sup>‡</sup>
Temperature (°C)	36.40 (36.20–36.50)	36.40 (36.20–36.60)	36.30 (36.20–36.50)	0.221 <sup>‡</sup>

**Note:** <sup>†</sup>p-values computed using the chi square test, <sup>‡</sup>p-values computed using the Mann Whitney.

**Abbreviations:** BMI, body mass Index; HAART, highly active antiretroviral therapy; HIV, human immunodeficiency virus.

## Echocardiographic and Electrocardiographic Parameters by Study Groups and HAART Regimen

In general, there was no significant difference in echocardiographic parameters between PLWHIV on HAART and the treatment naïve group ( $p > 0.05$ ). In addition, there was no significant difference in echocardiographic parameters between PLWHIV who were on efavirenz-based (EFV-based) regimen and those that took nevirapine-based (NVP-based) regimen ( $p > 0.05$ ) (Table 2).

As shown in Table 3, although not significant, heart rate, PR interval (PR-I) and QRS complex duration (QRSD) were increased in PLWHIV on HAART compared to the treatment naïve group (87 (77–96.5) beats per minute vs 82.5 (68.75–95.75) beats per minute, 168 (144.0–183.0) ms vs 157 (140.5–173.5) ms and 88 (82.0–98.0) ms vs 87 (82.0–95.0) ms respectively). From Table 4, heart rate was increased amongst PLWHIV on efavirenz-based therapy than their counterparts who were on nevirapine-based therapy (88 (77–97) beats/minute vs 86 (76–94) beats/minute). The opposite was true for the PR-I and QRSD (168 (141.5–182) ms vs 170 (148–192) ms and 86 (81.5–98.0) ms vs 90 (82–100) ms). However, none of the variables were statistically significant between the two groups ( $p > 0.05$ ).

## Prevalence of Echocardiographic Abnormalities Among Study Participants

The prevalence of echocardiographic abnormalities was 54.1% for PLWHIV on HAART, and 60.7% for the treatment naïve group, as shown in Figure 1. The common echocardiographic abnormalities seen among all the study population were

**Table 2** Echocardiographic Parameters Stratified by Study Groups and ART Regimen

Variable	All Participants MEDIAN (IQR)	HAART NAÏVE HIV Patients (n = 28) MEDIAN (IQR)	HIV Patients on HAART (n = 157) MEDIAN (IQR)	p-value
AR (cm)	3.00 (2.80–3.20)	2.90 (2.80–3.10)	3.00 (2.80–3.20)	0.204
LA (cm)	2.90 (2.70–3.10)	2.80 (2.55–3.00)	2.90 (2.70–3.10)	0.118
IVS (cm)	0.90 (0.80–1.00)	0.80 (0.70–1.00)	0.90 (0.80–1.00)	0.036*
LVPW (cm)	1.00 (0.90–1.10)	0.90 (0.90–1.00)	1.00 (0.90–1.10)	0.101
LVIDd (cm)	4.30 (3.85–4.80)	4.25 (3.90–4.75)	4.30 (3.80–4.80)	0.687
LVIDs (cm)	2.80 (2.40–3.10)	2.70 (2.40–3.18)	2.80 (2.40–3.10)	0.740
AV Vmax (m/s)	0.85 (0.70–1.10)	0.80 (0.70–1.08)	0.90 (0.70–1.10)	0.783
EF (%)	65.00 (57.00–75.00)	66.50 (57.75–73.75)	65.00 (54.00–75.00)	0.836
FS (%)	34.00 (27.00–40.00)	36.00 (30.00–38.00)	33.00 (26.40–40.00)	0.708
E/A	1.20 (1.00–1.40)	1.30 (1.00–1.68)	1.10 (1.00–1.40)	0.130
ANTIRETROVIRAL REGIMEN				
		EFAVIRENZ-BASED	NEVIRAPEN-BASED	
AR (cm)	3.00 (2.80–3.20)	3.00 (2.80–3.20)	3.00 (2.80–3.20)	0.854
LA (cm)	2.90 (2.70–3.10)	2.90 (2.70–3.10)	2.90 (2.70–3.10)	0.818
IVS (cm)	0.90 (0.80–1.00)	1.00 (0.80–1.10)	0.90 (0.80–1.00)	0.360
LVPW (cm)	1.00 (0.90–1.10)	1.00 (0.80–1.10)	1.00 (0.90–1.10)	0.743
LVIDd (cm)	4.30 (3.85–4.80)	4.30 (3.80–4.73)	4.30 (3.90–4.80)	0.806
LVIDs (cm)	2.80 (2.40–3.10)	2.80 (2.20–3.05)	2.80 (2.50–3.20)	0.346
AV Vmax (m/s)	0.85 (0.70–1.10)	0.90 (0.70–1.10)	0.90 (0.70–1.10)	0.943
EF (%)	65.00 (57.00–75.00)	65.00 (57.25–75.00)	64.00 (52.00–75.00)	0.598
FS (%)	34.00 (27.00–40.00)	34.00 (27.50–40.00)	33.00 (26.00–40.00)	0.532
E/A	1.20 (1.00–1.40)	1.10 (1.00–1.30)	1.20 (1.00–1.50)	0.157

**Note:** \*significant at  $\alpha$ -level of 0.05, p-values were computed using the Mann Whitney U-test.

**Abbreviations:** LA, left atrium; IVS, interventricular septum dimension in diastole; LVPW, left ventricular posterior wall dimension in diastole; LVIDd, left ventricular internal diameter in diastole; LVIDs, left ventricular internal diameter in systole; EF, left ventricular ejection fraction; FS, left ventricular fractional shortening; RVSP, right ventricular systolic pressure; AR, aortic root; AV Vmax, aortic valve maximal flow velocity; E/A, ratio of early and late mitral diastolic spectral Doppler; HAART, highly active antiretroviral therapy; HIV, human immunodeficiency virus.

**Table 3** Distribution of Electrocardiographic (ECG) Parameters Amongst PLWHIV on HAART and HAART- Naïve Subjects

ECG Parameter	Total Median (IQR)	HAART-NAÏVE HIV Patients Median (IQR)	HIV Patients on HAART Median (IQR)	p- value
Heart rate (beats/min)	87 (76–96)	82.5 (68.75–95.75)	87 (77–96.5)	0.455
PR-I (ms)	166 (144–182)	157 (140.5–173.5)	168 (144.0–183.0)	0.160
QRSD (ms)	88 (82–98)	87 (82.0–95.0)	88 (82.0–98.0)	0.980
	n (%)	n (%)	n (%)	
<b>SINUS RHYTHM</b>				—
Yes	185 (100.0)	28 (15.9)	157 (84.1)	
No	0 (0.0)	0 (0.0)	0 (0.0)	
<b>SINUS TACHYCAARDIA</b>				0.372
Yes	35 (18.9)	7 (20)	28 (80)	
No	150 (81.1)	21 (14)	129 (86)	
<b>SINUS BRADYCARDIA</b>				0.999
Yes	3 (1.6)	2 (66.7)	1 (33.3)	
No	182 (98.4)	26 (14.3)	156 (85.7)	
<b>NORMAL AXIS</b>				0.536
Yes	175 (94.6)	27 (15.4)	148 (84.6)	
No	10 (5.4)	1 (10)	9 (90)	
<b>RAD</b>				0.999
Yes	2 (1.1)	0 (0)	2 (100)	
No	183 (98.9)	28 (15.3)	155 (84.7)	
<b>LAD</b>				0.650
Yes	10 (5.4)	2 (28.0)	8 (80.0)	
No	175 (94.6)	26 (14.9)	149 (85.1)	
<b>LVH</b>				0.999
Yes	5 (2.7)	0 (0.0)	5 (100.0)	
No	180 (97.3)	28 (15.6)	152 (84.4)	
<b>LAE</b>				0.999
Yes	2 (1.1)	0 (0.0)	2 (100)	
No	183 (98.9)	28 (15.3)	155 (84.7)	

**Notes:** P-values of categorical variables were computed using the 2×2 Fisher exact test while that of continuous variables were done using Mann–Whitney U-test.

**Abbreviations:** QRSD, QRS duration; PR-I, PR Interval; LAD, Left Axis Deviation; RAD, right axis deviation; LVH, left ventricular hypertrophy; LAE, left atrial enlargement; HAART, highly active antiretroviral therapy; HIV, human immunodeficiency virus.

pulmonary hypertension (22.7%), pericardial effusion (22.2%) and left ventricular systolic dysfunction (17.8%). There was no significant difference in the proportions of echocardiographic abnormalities between PLWHIV on HAART and the treatment naïve ( $p > 0.05$ ). Furthermore, there were no significant differences in the proportions of echocardiographic abnormalities between participants who were on EFV-based regimen and those who took NVP-based regimen (Table 5).

## Prevalence of Electrocardiographic Abnormalities Among Study Groups

As shown in Figure 2, 53.5% of the total participants had normal ECG whilst 46.5% had abnormal ECG. A similar trend was observed for PLWHIV on HAART, as more PLWHIV had normal ECG (54.1%) than those who had abnormal ECG (45.9%). The treatment naïve group, however, had equal distribution of ECG findings.

Nonspecific T-wave changes (36.1%) and sinus tachycardia (30.6%) were the most common abnormalities seen in the participants (Table 6). All the other abnormalities were less than 10%. Also, apart from left ventricular hypertrophy (LVH), non-specific T-wave changes and sinus tachycardia which were higher in the efavirenz-based regimen group, all

**Table 4** Distribution of Electrocardiographic (ECG) Parameters Based on Antiretroviral Regimen

Antiretroviral Regimen				
ECG Parameter		EFAVERENZ BASED (n = 94)	NEVIRAPEN BASED (n = 63)	p-value
Heart rate (beats/min)	87 (77.0–96.5)	88 (77–97)	86 (76–94)	0.435
PRI (ms)	168 (144–183)	168 (141.5–182)	170 (148–192)	0.696
QRSD (ms)	88 (82–98)	86 (81.5–98.0)	90 (82–100)	0.19
	n%	n%	n%	
<b>SINUS RHYTHM</b>				-
Yes	157 (100.0)	94 (59.9)	63 (40.1)	
No	0 (0.0)	0 (0.00)	0 (0.00)	
<b>SINUS TACHYCAARDIA</b>				0.452
Yes	28 (17.8)	16 (57.1)	12 (42.9)	
No	129 (82.2)	78 (60.5)	51 (39.5)	
<b>SINUS BRADYCARDIA</b>				0.401
Yes	1 (0.6)	0 (0.0)	1 (100)	
No	156 (99.4)	94 (60.3)	62 (39.7)	
<b>NORMAL AXIS</b>				0.264
Yes	148 (94.3)	90 (60.8)	58 (32.9)	
No	9 (5.7)	4 (44.4)	5 (55.6)	
<b>RAD</b>				0.643
Yes	2 (1.3)	1 (50)	1 (50)	
No	155 (98.7)	93 (60)	62 (40)	
<b>LAD</b>				0.407
Yes	8 (5.1)	4 (50)	4 (50)	
No	149 (94.9)	90 (60.4)	59 (39.6)	
<b>LVH</b>				0.317
Yes	5 (3.2)	2 (40)	3 (60)	
No	152 (96.8)	92 (60.5)	60 (39.5)	
<b>LAE</b>				0.643
Yes	2 (1.3)	1 (50)	1 (50)	
No	155 (98.7)	93 (60.0)	62 (40.0)	

**Note:** P-values of categorical variables were computed using the 2×2 Fisher exact test while that of continuous variables were done using Mann–Whitney U-test.

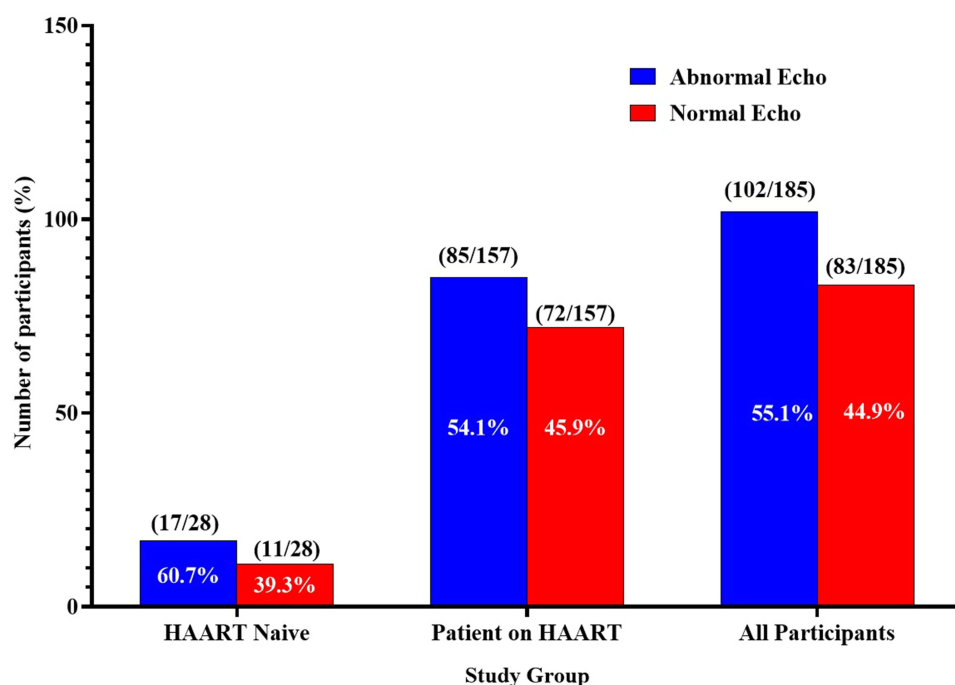
**Abbreviations:** QRSD, QRS duration; PRI, PR Interval; LAD, left axis deviation; RAD, right axis deviation; LVH, left ventricular hypertrophy; LAE, left atrial enlargement.

other abnormalities were more prevalent in the nevirapine-based regimen group than the efavirenz-based regimen group. None of the results was statistically significant between the two groups ( $p > 0.05$ ).

Table 6 summarizes the Spearman rho correlations of echocardiographic and ECG parameters. A negatively weak significant correlation was observed between QRS axis and LVIDd and LVIDs ( $r = -0.165$ ,  $p\text{-value} = 0.025$  and  $r = -0.157$ ,  $p\text{-value} = 0.033$  respectively). A weak positive correlation was also observed between PR-I and FS which was significant ( $r = 0.133$ ,  $p\text{-value} = 0.042$ ). A similarly weak but negative correlation, which was also significant, was also observed between PR-I and AR ( $r = -0.133$ ,  $p\text{-value} = 0.032$ ).

## Discussion

The current study investigated ECG and echocardiographic abnormalities among PLWHIV on HAART and treatment naïve PLWHIV. In this study, echocardiographic abnormalities among PLWHIV on HAART and the treatment naïve group were found to be 54.1%, and 60.7%, respectively. This is similar to the findings of Oluwabunmi et al, who reported 52% echocardiographic abnormalities among PLWHIV on HAART and 60% echocardiographic abnormalities among treatment naïve PLWHIV in Enugu, Nigeria.<sup>17</sup> Olusegun-Joseph et al also reported a higher prevalence of echocardiographic abnormalities among treatment naïve PLWHIV (78%) than HIV negative controls (16%).<sup>11</sup> On the contrary,



**Figure 1** Echocardiographic abnormalities among study participants.

Roosen et al reported very low prevalence (<10%) of echocardiographic abnormalities among PLWHIV on HAART, treatment naïve PLWHIV and HIV negative controls in South Africa.<sup>13</sup>

On the other hand, the prevalence of ECG abnormalities was 46.5% among PLWHIV; with non-specific T-wave changes (36.1%) and sinus tachycardia (30.6%) being the most common abnormalities. This prevalence of ECG

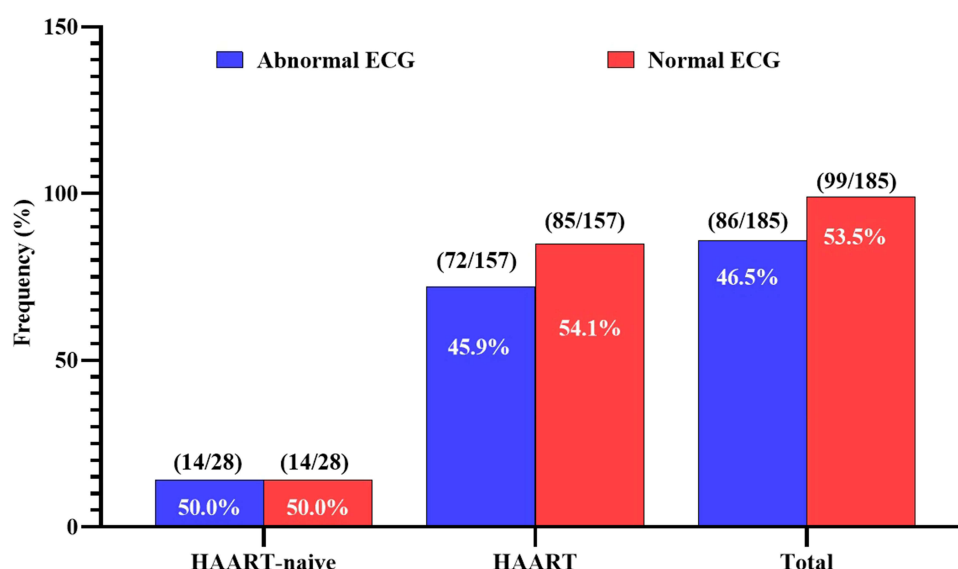
**Table 5** Echocardiographic Abnormalities Stratified by Study Groups and ART Regimen

Echocardiographic Abnormalities	All Participants (185)	HAART NAÏVE PLWHIV (n = 28)	PLWHIV ON HAART (n = 157)	p-value
LV hypertrophy	12 (6.5)	1 (3.6)	11 (7.0)	0.696
LV diastolic dysfunction	6 (3.2)	1 (3.6)	5 (3.2)	0.999
LV systolic dysfunction	33 (17.8)	4 (14.3)	29 (18.5)	0.790
Pericardial effusion	41 (22.2)	9 (32.1)	32 (20.4)	0.215
Pulmonary hypertension	42 (22.7)	8 (28.6)	34 (21.7)	0.464
Others	6 (3.2)	2 (7.1)	4 (2.5)	0.225
<b>ANTIRETROVIRAL REGIMEN</b>				
Echocardiographic Abnormalities		EFAVERENZ BASED (n = 94)	NEVIRAPEN BASED (n = 63)	
LV hypertrophy	12 (6.5)	8 (8.5)	3 (4.8)	0.513
LV diastolic dysfunction	6 (3.2)	5 (5.3)	0 (0.0)	0.182
LV systolic dysfunction	33 (17.8)	18 (19.1)	11 (17.5)	0.836
Pericardial effusion	41 (22.2)	20 (21.3)	12 (19.0)	0.365
Pulmonary hypertension	42 (22.7)	20 (21.3)	14 (22.2)	0.716
Others	6 (3.2)	3 (3.2)	1 (1.6)	0.385

**Note:** p-values were computed using the 2×2 Fischer exact test, others include dilated cardiac chambers, dilated aortic root, tricuspid regurgitation and tricuspid effusion. Some participants had multiple abnormalities.

**Abbreviations:** LV, left ventricle; HAART, highly active antiretroviral therapy; HIV, human immunodeficiency virus.





**Figure 2** Distribution of ECG abnormalities stratified by HAART status.

abnormalities is in harmony but lower than the report of Njoku et al<sup>12</sup> and Okoye et al,<sup>10</sup> in studies done in Nigeria; where 73% and 70% were reported among the HAART naïve PLWHIV, respectively, and a higher prevalence of 93% was reported by Njoku et al in the HAART treated group.

In this study, we found no significant difference in the proportions of echocardiographic abnormalities between treatment naïve PLWHIV and PLWHIV on HAART. Furthermore, there were no significant difference in the proportions of echocardiographic abnormalities between patients on EFV-based regimen and those on NVP-based regimen (Table 5).

**Table 6** Electrocardiographic (ECG) Abnormalities Stratified by HAART Status and Antiretroviral Regimen

ECG Abnormality	All Participants (185)	HAART NAÏVE PLWHIV (n = 28)	PLWHIV ON HAART (157)	p-value
First degree AV block	6 (7.0)	0 (0.0)	6 (8.3)	0.567
Left atrial enlargement	1 (1.2)	0 (0.0)	1 (1.4)	0.999
Left ventricular hypertrophy	5 (5.8)	0 (0.0)	5 (6.9)	0.74
Nonspecific T wave changes	31 (36.0)	5 (35.7)	26 (36.1)	0.143
Poor R wave progression	3 (3.5)	0 (0.0)	3 (4.2)	0.856
Sinus bradycardia	3 (3.5)	2 (14.3)	1 (1.4)	0.546
Sinus tachycardia	27 (31.4)	5 (35.7)	22 (30.6)	0.734
Others	10 (11.6)	2 (14.3)	8 (11.1)	0.872
ANTIRETROVIRAL REGIMEN				
ECG Abnormalities	(n = 185)	EFAVERENZ BASED (n = 94)	NEVIRAPEN BASED (n = 63)	
First degree AV block	6 (8.3)	2 (5.3)	4 (11.8)	0.654
Left atrial enlargement	1 (1.4)	0 (0.0)	1 (2.9)	0.999
Left ventricular hypertrophy	5 (6.9)	3 (7.9)	2 (5.9)	0.754
Nonspecific T wave changes	26 (36.1)	15 (39.5)	11 (32.4)	0.920
Poor R wave progression	3 (4.2)	1 (2.6)	2 (5.9)	0.879
Sinus bradycardia	1 (1.4)	0 (0.0)	1 (2.9)	0.895
Sinus tachycardia	22 (30.6)	12 (31.6)	10 (29.4)	0.639
Others	8 (11.1)	5 (13.2)	3 (8.8)	0.546

**Note:** Others: left axis deviation, type B Wolff–Parkinson White syndrome and complete right bundle branch block (RBBB), none of the study participants had multiple abnormalities.



Our finding is comparable to that of Oluwabunmi et al, who found a similar proportion of echocardiographic abnormalities between treatment naïve PLWHIV and PLWHIV on HAART in Nigeria.<sup>17</sup> In the same study, they reported no significant difference in echocardiographic abnormalities between participants on protease inhibitor (PI)-based and non-PI-based regimen.<sup>17</sup>

With respect to the distribution of abnormalities, non-specific T-wave changes (36.1%) and sinus tachycardia (30.6%) were the most common ECG abnormalities among the participants, which is comparable to the findings of Oluwabunmi et al, who reported that sinus tachycardia was the most prevalent ECG abnormality (64%) seen in this PLWHIV.<sup>17</sup> Again, Oluwabunmi et al, in Nigeria, reported T-wave inversion to be the most prevalent ECG abnormality amongst PLWHIV in their study (23%), followed closely by sinus tachycardia (21%).<sup>17</sup> This high prevalence of sinus tachycardia in the treatment naïve arm could be explained by anxiety, excessive sympathetic stimulation from autonomic imbalance, dehydration in subjects with chronic diarrhoea, anaemia and increased metabolic demand in febrile illnesses as heart rate is known to increase in such conditions.<sup>8</sup> However, Kabwe et al, in Zambia, reported that sinus bradycardia was found in about 7% of the PLWHIV in their study.<sup>17,18</sup>

Apart from left ventricular hypertrophy, non-specific T-wave changes and sinus tachycardia which were higher in the efavirenz-based regimen group, all other ECG abnormalities were more prevalent in the nevirapen-based regimen group than the efavirenz-based regimen group. This finding is also similar to the study by Oluwabunmi et al, who also found LVH, sinus tachycardia and T-wave inversion to be higher in non-PI-based regimen than in PI-based regimen.<sup>17</sup>

In this study, except for IVS that was significantly higher in PLWHIV on HAART than the treatment naïve, there was no significant difference in the other echocardiographic parameters between treatment naïve PLWHIV and those on HAART. In addition, there was no significant difference in echocardiographic parameters between participants who were on efavirenz-based regimen and those that took nevirapen-based regimen. Oluwabunmi et al reported similar echocardiographic parameters between treatment naïve PLWHIV and those on HAART.<sup>17</sup> In another Nigerian study, Olusegun-Joseph et al reported more echocardiographic abnormalities in treatment naïve PLWHIV than healthy controls.<sup>11</sup> Several studies have associated increased echocardiographic abnormalities with increased subclinical atherosclerosis among PLWHIV.<sup>9,10</sup> Increased echocardiographic abnormalities have been associated with increased mortality among PLWHIV.<sup>11</sup> Studies have shown that cardiovascular abnormalities in HIV infection are often clinically quiescent and may be attributed to disorder in other systems.<sup>12–16</sup> Our current study, which confirms no significant difference in the findings between PLWHIV on HAART and the treatment naïve, implies that cardiac abnormalities are not significantly due to HAART. Our current study further confirms no significant difference in the rate of echocardiographic and ECG abnormalities between different regimens of HAART. This is an additional confirmation that cardiac abnormalities in PLWHIV are not significantly due to HAART. PLWHIV on HAART are therefore not at higher risk of cardiac abnormalities due to treatment. The higher rate of echocardiographic and ECG abnormalities in both HAART and naïve groups suggests that cardiac abnormalities are mostly due to the virus. Routine echocardiography and ECG are therefore recommended for all PLWHIV to improve management and quality of life.

Our study had a few limitations, and significantly amongst them is the low number of treatment naïve PLWHIV (n = 28). This was inevitable because most PLWHIV were on HAART as per the current guidelines.<sup>17</sup> Our study findings were based on conventional 2D echocardiography which is less sensitive than 3D echocardiography. However, conventional 2D is still the most widely available in many clinics.

## Conclusion

Cardiac abnormalities were found to be over 55% prevalent in PLWHIV, regardless of their HAART status. There is no significant difference in the rate of cardiac abnormalities in PLWHIV on HAART and treatment naïve PLWHIV, making HAART an unlikely cause of cardiac abnormalities in PLWHIV.

## What is Already Known on This Topic?

- That cardiovascular disease is one of the main causes of death in PLWHIV.
- That cardiac abnormalities are often detected late.

## What Does This Study Add?

- That PLWHIV could benefit from routine ECG and echocardiography.
- That being on HAART does not increase the risk of cardiac abnormalities and may even reduce the prevalence of cardiac abnormalities.

## Acknowledgment

The authors would like to express their sincere gratitude to the staff and the study participants at the HIV clinic of the Department of Medicine, Komfo Anokye Teaching Hospital, Kumasi, Ghana, for their support. Without their co-operation, this study would not have been done.

## Author Contributions

All authors made a significant contribution to the work reported, whether that is in the conception, study design, execution, acquisition of data, analysis and interpretation, or in all these areas; took part in drafting, revising or critically reviewing the article; gave final approval of the version to be published; have agreed on the journal to which the article has been submitted; and agree to be accountable for all aspects of the work.

## Disclosure

The authors report no conflicts of interest in relation to this work.

## References

1. UNAIDS. Global AIDS Update - Seizing the moment -Tackling entrenched inequalities to end epidemics; 2020.
2. UNAIDS. Global AIDS update 2016; 2016.
3. Barbaro G, Di Lorenzo G, Grisorio B, Barbarini G. INVESTIGATORS4 GIPLSCDPADA. Cardiac involvement in the acquired immunodeficiency syndrome: a multicenter clinical-pathological study. *AIDS Res Hum Retroviruses*. 1998;14(12):1071–1077. doi:10.1089/aid.1998.14.1071
4. Islam F, Wu J, Jansson J, Wilson D. Relative risk of cardiovascular disease among people living with HIV: a systematic review and meta-analysis. *HIV Med*. 2012;13(8):453–468. doi:10.1111/j.1468-1293.2012.00996.x
5. Kaul S, Fishbein MC, Siegel RJ. Cardiac manifestations of acquired immune deficiency syndrome: a 1991 update. *Am Heart J*. 1991;122(2):535–544. doi:10.1016/0002-8703(91)91013-D
6. Chaudhary S, Apurva SK, Reddy DH, et al. A study of cardiovascular abnormalities in HIV positive patients in a tertiary care hospital in Northern India. *J Assoc Physicians India*. 2017;65(12):24–29.
7. Fisher SD, Lipshultz SE. Epidemiology of cardiovascular involvement in HIV disease and AIDS. *Ann N Y Acad Sci*. 2001;946(1):13–22. doi:10.1111/j.1749-6632.2001.tb03900.x
8. Myerson M, Kaplan-Lewis E, Poltavskiy E, Ferris D, Bang H. Prolonged QTc in HIV-infected patients: a need for routine ECG screening. *JAPAC*. 2019;18:2325958219833926. doi:10.1177/2325958219833926
9. Reimer Jensen A, Ramalho S, Claggett B, Biering-Sorensen T, Shah A. P5419 Influence of HIV infection on cardiac structure and function in the era of HAART: a systematic review and meta-analysis of case-control studies. *Eur Heart J*. 2018;39(suppl\_1):ehy566.P5419. doi:10.1093/eurheartj/ehy566.P5419
10. Okoye IC, Anyabolu EN. Electrocardiographic abnormalities in treatment-naïve HIV subjects in south-east Nigeria. *Cardiovasc J Afr*. 2017;28(5):315–318. doi:10.5830/CVJA-2017-013
11. Olusegun-Joseph D, Ajuluchukwu J, Okany C, Mbakwem A, Oke D, Okubadejo N. Echocardiographic patterns in treatment-naïve HIV-positive patients in Lagos, south-west Nigeria: cardiovascular topic-online article. *Cardiovasc J Afr*. 2012;23(8):1–6. doi:10.5830/CVJA-2012-048
12. Njoku P, Ejim E, Anisiuba B, Ike S, Onwubere B. Electrocardiographic findings in a cross-sectional study of human immunodeficiency virus (HIV) patients in Enugu, south-east Nigeria. *Cardiovasc J Afr*. 2016;27(4):252–257. doi:10.5830/CVJA-2016-007
13. Roozen GV, Meel R, Peper J, et al. Electrocardiographic and echocardiographic abnormalities in urban African people living with HIV in South Africa. *PLoS One*. 2021;16(2):e0244742. doi:10.1371/journal.pone.0244742
14. Fox MP, Rosen S. A new cascade of HIV care for the era of “treat all”. *PLoS Med*. 2017;14(4):e1002268. doi:10.1371/journal.pmed.1002268
15. Lang RM, Bierig M, Devereux RB, et al. Recommendations for chamber quantification. *Eur J Echocardiogr*. 2006;7(2):79–108. doi:10.1016/j.euje.2005.12.014
16. Jafary FH. Devereux formula for left ventricular mass—be careful to use the right units of measurement. *J Am Soc Echocardiogr*. 2007;20(6):783. doi:10.1016/j.echo.2007.02.034
17. Oluwabunmi AA, Rumokere AM, Sotonye D-M. Pattern of electrocardiographic and echocardiographic abnormalities among HIV patients in Port Harcourt, Nigeria. *Science*. 2020;6(1):15–24.
18. Kabwe L, Lakhi S, Kalinichenko S, Mulenga L. Prevalence of subclinical cardiovascular disease in healthy HIV infected patients at the University Teaching Hospital in Lusaka, Zambia. *Med J Zambia*. 2016;43(1):12–23.

## International Journal of General Medicine

Dovepress

**Publish your work in this journal**

The International Journal of General Medicine is an international, peer-reviewed open-access journal that focuses on general and internal medicine, pathogenesis, epidemiology, diagnosis, monitoring and treatment protocols. The journal is characterized by the rapid reporting of reviews, original research and clinical studies across all disease areas. The manuscript management system is completely online and includes a very quick and fair peer-review system, which is all easy to use. Visit <http://www.dovepress.com/testimonials.php> to read real quotes from published authors.

Submit your manuscript here: <https://www.dovepress.com/international-journal-of-general-medicine-journal>