

Outcomes and Risk Factors of Bloodstream Infections Caused by Carbapenem-Resistant and Non-Carbapenem-Resistant *Klebsiella pneumoniae* in China

Xiaoxue Liang^{1,*}, Ping Chen^{2,*}, Baoguo Deng^{2,*}, Feng-Hui Sun^{1,*}, Yongqiang Yang^{3–5}, Yanxian Yang^{3,4}, Ruowen He^{3,4}, Mingyang Qin², Yiping Wu^{3,4}, Fan Yang², Guo-Bao Tian^{3,4}, Min Dai¹

¹School of Laboratory Medicine, Chengdu Medical College, Chengdu, Sichuan Province, People's Republic of China; ²School of Basic Medical Science, Xinxiang Medical University, Xinxiang, Henan Province, People's Republic of China; ³Department of Microbiology, Zhongshan School of Medicine, Sun Yat-sen University, Guangzhou, Guangdong Province, People's Republic of China; ⁴Key Laboratory of Tropical Diseases Control (Sun Yat-sen University), Ministry of Education, Guangzhou, Guangdong Province, People's Republic of China; ⁵School of Pharmaceutical Sciences (Shenzhen), Sun Yat-sen University, Guangzhou, Guangdong Province, People's Republic of China

*These authors contributed equally to this work

Correspondence: Min Dai, School of Laboratory Medicine, Chengdu Medical College, Chengdu, Sichuan Province, People's Republic of China, Tel +86 28-62739128, Email daimin1015@163.com

Purpose: To compare antimicrobial resistance, virulence, clinical characteristics, and risk factors between carbapenem-resistant *K. pneumoniae* (CRKP) and carbapenem-susceptible *K. pneumoniae* (CSKP) isolates from patients with bloodstream infections (BSIs) in China.

Patients and Methods: The clinical data of 103 patients with *K. pneumoniae* BSI from 10 hospitals were retrospectively analyzed. The minimum inhibitory concentrations of 15 antibiotics against the bacteria were determined. A *Galleria mellonella* infection model was used to evaluate virulence of the isolates. Kaplan–Meier curves were calculated to evaluate the 28-day and in-hospital survival rates of the isolates. The risk factors for CRKP and CSKP infection and respective mortality rate were evaluated by univariate analysis, and independent risk factors were evaluated using the multivariate logistic regression model.

Results: Our results indicated that CRKP isolates were more resistant to most tested antibiotics than CSKP isolates. The *G. mellonella* infection model was used to demonstrate that CRKP isolates were more virulent than CSKP isolates. We found that in-hospital deaths occurred in 39.3% (22/56) of patients with CRKP BSIs and were significantly higher than those in patients with CSKP infections (19.1%, 9/47). Patients infected with CRKP isolates had poorer outcomes than those infected with the CSKP strains. For in-hospital mortality of CRKP BSIs, the independent risk factors included carbapenem-resistant Enterobacterales bacteremia and length of hospitalization after the onset of BSI.

Conclusion: Our findings confirm that CRKP isolates are more drug-resistant than CSKP isolates and are associated with poorer outcomes. To prevent CRKP infection, strict infection control strategies and active surveillance should be implemented in hospitals.

Keywords: *Klebsiella pneumoniae*, bloodstream infections, virulence, antimicrobial resistance

Introduction

Klebsiella pneumoniae is the most common pathogen that causes bloodstream infections (BSIs), pneumonia, peritonitis, and urinary tract infections.¹ The China Antimicrobial Resistance Surveillance Network revealed that the isolation rate of *K. pneumoniae* ranked second among gram-negative bacteria in 2020. The first case of carbapenem-resistant *K. pneumoniae* (CRKP) was reported in the 1990s.² In the following decades, CRKP was reported in the USA,³ Israel,⁴ Europe,^{5,6} and China.^{7–9} Notably, public health is threatened by BSIs caused by CRKP. The mortality rates

caused by CRKP infections in Europe, South America, Asia, and North America are reportedly 50.06%, 46.71%, 44.82%, and 33.24%, respectively.⁵ In addition, the medical costs of CRKP-infected patients are higher than those of carbapenem-susceptible *K. pneumoniae* (CSKP)-infected patients during hospitalization.¹⁰

Previous researchers paid attention to the monitoring of long-term antibiotics of *Klebsiella pneumoniae*,¹¹ the predictors of CRKP strain infection^{12,13} and the effect of CRKP isolates on patients' clinical relevance,^{6,14–16} however, few studies have compared the differences between CRKP and CSKP strains in BSIs. Here, we conducted a retrospective case-control study in Guangdong Province, China. In this study, 103 strains were collected from 10 hospitals between 2010 and 2018. The antimicrobial resistance, virulence, clinical characteristics, and risk factors of the CRKP and CSKP isolates from patients with BSIs were clarified.

Materials and Methods

Isolated Bacteria

Between 2010 and 2018, 103 *K. pneumoniae* isolates were collected from the blood of patients with BSIs in 10 tertiary hospitals in Guangdong Province, China. The isolates were cultured, and species were identified by 16S rRNA sequencing and MALDI-TOF MS (Bruker Daltonik GmbH, Bremen, Germany). Universal primer 27F (5'-AGRGTTYGATYMTGGCTCAG-3') and 1492R (5'-RGYTACCTTGTTACGACTT-3') were used to amplify the full-length 16S rRNA gene.¹⁷

Patient Demographics

Information regarding demographics, comorbidities (hypertensive, diabetes diseases, coronary heart disease, hematogenous tumor cancer, and other chronic diseases), location before admission, health-care exposures before BSI onset (previous hospitalization within 12 months, or intensive care unit [ICU] admission, surgery, immunosuppressive therapy, or antibiotic exposure within 30 days), or underlying diseases were collected as primary data; Sources of infection (central-line; pneumonia or ventilator; infections of cardiovascular or gastrointestinal systems, surgical sites, urinary tract, skin and soft tissue, reproductive tract; mechanical ventilation; central vein catheterization; septic shock; change in antibiotic treatment after positive culture results; or carbapenem-including treatment) were also collected together with microbiological data, length of hospitalization, antimicrobial therapies, and patient outcomes.

BSI onset was defined as the date of collection of an isolate that resulted in a positive blood culture. BSI can be divided into community-acquired (CA) and hospital-acquired (HA), based on the location of onset. CA-BSI patients were defined as blood culture-positive patients who had been hospitalized for <48 h and had not been hospitalized in the past 6 months. On the contrary, HA-BSI was defined as a positive blood culture from a patient 48 hours after hospitalization or a positive blood culture from a patient hospitalized for <48 h but who had been hospitalized within the past 6 months.⁴

Antimicrobial Susceptibility Testing (AST)

The agar dilution method was used for AST, and the breakpoints of polymyxin B and tigecycline were explained based on the breakpoints of the European Committee on Antimicrobial Susceptibility Testing (EUCAST) and those of other antimicrobials were based on the Clinical and Laboratory Standards Institute guidelines (CLSI).¹⁸

The 15 antimicrobial agents tested were cefotaxime, ceftazidime, cefepime, colistin, tigecycline, imipenem, ertapenem, meropenem, ciprofloxacin, fosfomycin, trimethoprim-sulfamethoxazole, piperacillin-tazobactam, amikacin, gentamicin, and aztreonam. Isolates with imipenem and/or meropenem minimum inhibitory concentrations (MICs) ≥ 4 $\mu\text{g/mL}$ or ertapenem MICs ≥ 2 $\mu\text{g/mL}$ were defined as CRKP.¹⁹

Construction of a *Galleria Mellonella* Infection Model

Virulence of the CRKP and CSKP strains was measured using a *G. mellonella* model.^{20,21} 11 strains were randomly selected from the CRKP and CSKP groups respectively, and the larvae were infected with the concentrations of 1×10^4 CFU/mL. *Escherichia coli* MG1655 was used as the non-toxic control and *K. pneumoniae* strain Hvkp4 as the highly

toxic control as previously reported.²¹ The wax moth larvae were incubated in a dark room at 37 °C, and the survival rate was recorded every 12 h for 7 days.

Statistical Analysis

Statistical analyses of the data were performed using IBM SPSS. Categorical variables are presented as numbers and percentages and compared using the chi-square or Fisher's exact test. In addition, continuous variables are indicated by the median and interquartile range (IQR; non-normally distributed data) or standard deviation (SD; normally distributed data) and mean. Continuous variables were compared according to their distributions using the nonparametric Mann–Whitney *U*-test or Student's *t*-test. The results of the univariate analysis are indicated by *P* values and odds ratios (ORs) with 95% confidence intervals (CIs). Statistical significance (two-tailed) was defined as *P* < 0.05.

Results

Patient Demographics

In this study, 103 *K. pneumoniae* strains were collected from patients with BSIs between 2010 and 2018 (Figure 1A and Table 1). Based on the AST results (Table 2), of the 103 strains included, 56 (54.4%) were CRKP and 47 (45.6%) were CSKP. 73 (70.87%) patients were male (37.87% and 33.01% in the CRKP and CSKP groups, respectively), and 30 (29.13%) were female (Table 1). The median age of CRKP-infected patients was 27 years (IQR 0–61) and CSKP patients was 10 years (IQR 0–61) (*P* = 0.48); almost half of the CRKP group was 0–17 years old (48%), followed by 41–65 years (29%) and ≥ 66 years (18%) (Figure 1B). CSKP isolates were mainly detected in 0–17 years old, 41–65 years old (58%), and ≥ 66 years old (58%, 21%, and 17%, respectively) (Figure 1C).

CRKP Strains Were More Resistant to Most Antibiotics Compared with CSKP Strains

All 103 *K. pneumoniae* strains were tested for susceptibility against 15 antibiotics (Figure 2, Table 2). In addition to carbapenem resistance, the CRKP group had a higher resistance rate among other antibiotics than the CSKP group, except for FOS, among which cephalosporins showed 100% non-susceptibility rates. The lowest non-sensitive rates in the CRKP group were for colistin (1.8%) and tigecycline (12.5%) (Figure 2). The value of MIC₅₀ and MIC₉₀ of the CRKP group were higher than those of the CSKP group (Table 2). The resistance rates to cefotaxime, cefepime, imipenem, ertapenem, meropenem, piperacillin-tazobactam, amikacin, aztreonam, and gentamicin in the CRKP group were higher than those in the CSKP group (*P* < 0.01) (Table 2).

CRKP Strains Had Higher Pathogenicity Than CSKP Strains

Using the *G. mellonella* infection model to predict the toxicity of strains, we randomly selected 11 strains from both the CRKP and CSKP groups. The results showed that the survival rate of the CRKP group was significantly lower than that

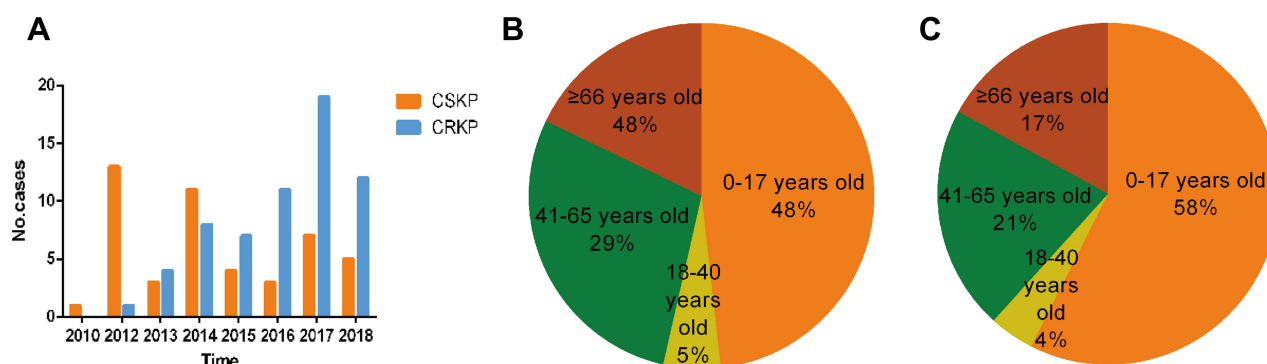


Figure 1 (A) Isolation of CRKP and CSKP over the past 9 years. CRKP isolates increased almost every year, and most strains were isolated in 2017. (B) Age distribution of patients with CRKP strains. (C) Age distribution of patients with CSKP strains.

Abbreviations: KP, *Klebsiella pneumoniae*; CRKP, carbapenem-resistant KP; CSKP, carbapenem-susceptible KP.

Table I Characteristics of Patient Cohorts

Characteristic	Complete Cohort		
	CSKP (n=47)	CRKP (n=56)	P-value
Age (median, IQR)	10 (0–61)	27 (0–61)	0.48
Sex			0.764
Female	13 (27.7%)	17 (30.4%)	
Male	34 (72.3%)	39 (69.6%)	
Underlying disease/comorbid conditions			
Hypertensive	0 (0%)	3 (5.4%)	0.248
Diabetes diseases	8 (17.0%)	6 (10.7%)	0.352
Coronary heart disease	1 (2.1%)	4 (7.1%)	0.372
Congestive heart failure	5 (10.6%)	3 (5.4%)	0.464
Connective tissue disease	0 (0%)	2 (3.6%)	0.499
Chronic pulmonary disease	3 (6.4%)	1 (1.8%)	0.329
Chronic kidney failure	1 (2.1%)	5 (8.9%)	0.216
End-stage liver disease	1 (2.1%)	0	0.456
Cancer	6 (12.8%)	5 (8.9%)	0.530
Hematogenous tumor	6 (12.8%)	2 (3.6%)	0.138
Charlson comorbidity index > 2	8 (17.0%)	8 (14.3%)	0.703
Location before admission			
Home	27 (57.4%)	24 (42.9%)	0.14
Transfer from other hospital	13 (27.7%)	29 (51.8%)	0.013
Born this episode	7 (14.9%)	3 (5.4%)	0.18
Health-care exposures before BSI onset			
Antibiotic exposure (within 30 days)	35 (74.5%)	50 (89.3%)	0.055
ICU admission (within 30 days)	13 (25.5%)	24 (42.9%)	0.147
Surgery (within 30 days)	14 (29.8%)	20 (35.7%)	0.524
Corticosteroid therapy (within 30 days)	6 (12.8%)	7 (12.5%)	0.968
Radiation therapy or chemotherapy	6 (12.8%)	2 (3.6%)	0.138
Immunosuppressive therapy (within 3 months)	9 (19.1%)	11 (19.6%)	0.950
Tracheal cannula or tracheotomy (within 30 days)	15 (31.9%)	34 (69.4%)	0.004
Central venous catheterization (within 30 days)	27 (57.4%)	40 (71.4%)	0.138
Previous hospitalization (within 12 months)	42 (89.4%)	51 (91.1%)	1
ICU at time of BSI onset	13 (27.7%)	20 (35.7%)	0.383

(Continued)

Table 1 (Continued).

Characteristic	Complete Cohort		
	CSKP (n=47)	CRKP (n=56)	P-value
Epidemiological classification			0.235
Community acquired	11 (23.4%)	8 (14.3%)	
Hospital acquired	36 (76.6%)	48 (85.7%)	
Source			
Primary	12 (25.5%)	12 (21.4%)	0.624
Central-line associated	3 (6.4%)	6 (10.7%)	0.504
Cardiovascular system infection	1 (2.1%)	0	0.456
Gastrointestinal system infection	11 (23.4%)	13 (23.2%)	0.982
Pneumonia or ventilator-associated event	14 (29.8%)	16 (28.6%)	0.892
Surgical site infection	1 (2.1%)	1 (1.8%)	1
Skin and soft tissue infection	1 (2.1%)	3 (5.4%)	0.623
Urinary tract infection	4 (8.5%)	5 (8.9%)	1
Mechanical ventilation after BSI onset	16 (34%)	31 (55.4%)	0.031
Hemodialysis treatment	5 (10.6%)	10 (17.9%)	0.301
Temperature $\geq 39^{\circ}\text{C}$ or $< 36^{\circ}\text{C}$ after BSI onset	21 (44.7%)	27 (48.2%)	0.72
Severe sepsis	20 (42.6%)	26 (46.4%)	0.694
Septic shock	14 (29.8%)	17 (30.4%)	0.950
Active empiric antibiotic therapy	44 (93.6%)	25 (44.6%)	< 0.001
Active directed antibiotic therapy	41 (87.2%)	39 (69.6%)	0.033
Combination therapy	3 (6.4%)	3 (5.4%)	1.000
Carbapenem-including treatment	31 (66.0%)	40 (71.4%)	0.55
Polymyxin-including treatment	0	5 (8.9%)	0.036
Tigecycline-including treatment	1 (2.1%)	12 (21.4%)	0.003
Length of hospitalization before the onset of BSI	11 (1–19)	12 (3.25–28)	0.216
Length of hospitalization after the onset of BSI	15 (8–27)	14 (8.25–23.5)	0.366
Total length of stay (days)	28 (16–51)	28.5 (16–50.75)	0.783
Outcome			
7-day mortality	7 (14.9%)	10 (17.9%)	0.687
14-day mortality	7 (14.9%)	16 (28.6%)	0.097
28-day mortality	9 (19.1%)	20 (35.7%)	0.063
In-hospital mortality	9 (19.1%)	22 (39.3%)	0.026

Note: P values less than 0.05 are bolded.

Abbreviations: KP, *Klebsiella pneumoniae*; CRKP, carbapenem-resistant KP; CSKP, carbapenem susceptible KP; BSI, bloodstream infection.

Table 2 Antimicrobial Spectrum Evaluation Percentage of Carbapenem-Resistant *Klebsiella pneumoniae* Isolates Resistance to Various Antibiotics

Antimicrobial Agents	CRKP Isolates (n=56)			CSKP Isolates (n=47)			P-value
	MIC ₅₀	MIC ₉₀	R%	MIC ₅₀	MIC ₉₀	R%	
CTX	256	>256	100	48	>128	74.5	<0.01
CAZ	>256	>256	100	8	128	55.3	<0.01
FEP	128	>256	100	8	16	61.7	<0.01
CT	0.25	0.5	1.8	0.5	0.5	0	0.362
TGC	1	4	12.5	1	2	8.5	0.519
IMP	16	>32	89.3	≤0.25	0.375	2.1	<0.01
ETP	>16	>16	100	≤0.25	≤0.25	2.1	<0.01
MEM	16	>16	94.6	≤0.25	0.25	0	<0.01
CIP	2	128	57.1	1	64	42.6	0.134
FOS	512	>512	92.9	>512	>512	97.9	0.24
SXT	2/38	16/304	48.2	>16	>16	59.6	0.254
PTZ	512	>512	94.6	4	12	8.5	<0.01
AMK	4	>256	48.2	2	4	6.4	<0.01
GEN	128	>256	60.7	≤1	128	38.3	0.023
ATM	>128	>128	96.4	12	128	55.3	<0.01

Note: P values less than 0.05 are bolded.

Abbreviations: CTX, cefotaxime; CAZ, ceftazidime; FEP, cefepime; CT, colistin; TGC, tigecycline; IMP, imipenem; ETP, ertapenem; MEM, meropenem; CIP, ciprofloxacin; FOS, fosfomycin; SXT, trimethoprim-sulfamethoxazole; PTZ, piperacillin-tazobactam; AMK, amikacin; GEN, gentamicin; ATM, aztreonam.

of the CSKP group ($P < 0.05$; [Figure 3A](#)). The fatality rate of the CRKP group was significantly higher than that of the CSKP group from 12 to 168 h ($P < 0.05$; [Figure 3B](#)). The highly virulent *K. pneumoniae* strain Hvkp4 was used as a positive control. The survival curve revealed that the survival rate of the CRKP group was lower than those of *K. pneumoniae* strain Hvkp4 at different time points. The mortality rate of *G. mellonella* injected with some isolates was approximately 100% during the first 24 h ([Figure 3C](#)). In contrast, the survival rate of most strains in the CSKP group was higher than that of *K. pneumoniae* strain Hvkp4 ([Figure 3D](#)). Taken together, we have demonstrated in this study that the CRKP strain is to some extent more virulent than the CSKP strain.

The Patients Infected by the CRKP Group Had Higher Mortality Than the CSKP Group

In-hospital deaths occurred in 22 (39.3%) of 56 CRKP BSIs and were significantly higher than those in CSKP infections (9/47 [19.1%] cases, $P = 0.026$, χ^2 test) ([Table 1](#)). The mortality rates in the CRKP group were 17.9% at 7 days, 28.6% at 14 days, and 35.7% at 28 days, compared to 14.9% at 7 days, 19.1% at 14 days, and 19.1% at 28 days in the CSKP group ($P = 0.687$, 0.097, and 0.063, respectively) ([Table 1](#)).

The Kaplan–Meier curve showed the survival of the CRKP and CSKP groups after bloodstream infections ([Figure 4](#)). The 28-day cumulative survival showed a significant difference between the CRKP and the CSKP groups ($P = 0.0303$). The in-hospital cumulative survival showed a significant difference between the CRKP and CSKP groups

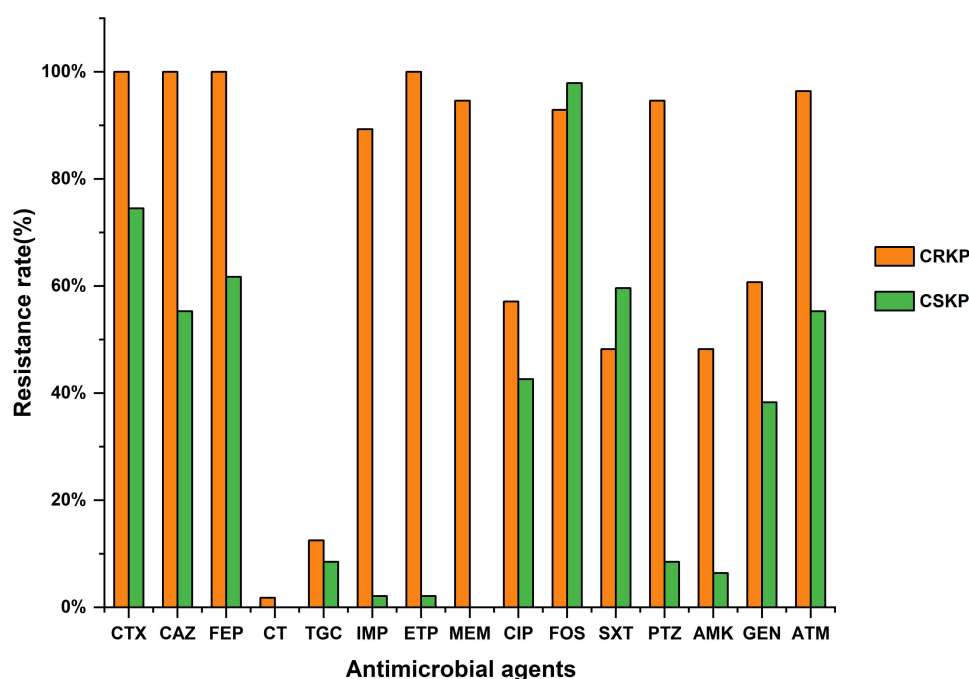


Figure 2 Resistance rate of CRKP and CSKP to antimicrobial agents.

Abbreviations: CTX, cefotaxime; CAZ, ceftazidime; FEP, cefepime; CT, colistin; TGC, tigecycline; IMP, imipenem; ETP, ertapenem; MEM, meropenem; CIP, ciprofloxacin; FOS, fosfomycin; SXT, trimethoprim-sulfamethoxazole; PTZ, piperacillin-tazobactam; AMK, amikacin; GEN, gentamicin; ATM, aztreonam.

($P = 0.0125$). These data suggest that patients infected with CRKP have poorer outcomes than those infected with the CSKP isolates.

Risk Factors for Infections by CRKP and CSKP Strains

The median length of hospital stay was 28.5 days for CRKP patients compared with 28 days for CSKP patients. Most BSI patients (84/103; 81.55%) were healthcare-associated, whereas the rest (19/103; 18.45%) were community-acquired. Before BSI onset, access to healthcare was more frequent among CRKP patients than among CSKP patients. More patients with CRKP BSIs were treated with ICU admission, antibiotics, surgery within 30 days before BSI onset, immunosuppressive therapy, and previous hospitalization (Table 1). Carbapenems were the most frequently used antibiotics in subsequent therapy for both CRKP BSIs (71.4%, 40/56) and CSKP BSIs (66.0%, 31/47).

Univariate analysis showed that transfer from other hospitals, tracheal cannula or tracheotomy (within 30 days), mechanical ventilation after BSI onset, active empiric antibiotic therapy, active directed antibiotic therapy, polymyxin treatment, and tigecycline treatment were associated with CRKP BSIs (Table 1). Multivariable logistic regression analysis showed that tracheal cannula or tracheotomy (within 30 days) (OR = 0.295; 95% CI = 0.102–0.852, $P = 0.024$), active empiric antibiotic therapy (OR = 0.008; 95% CI = 0.001–0.118, $P < 0.01$), and tigecycline treatment (OR = 0.061; 95% CI = 0.004–0.855, $P = 0.038$) were independent risk factors for CRKP BSIs (Table 3).

Risk Factors of Mortality of CRKP, and CSKP BSIs

Univariate analysis of risk factors for 28-day mortality (Supplementary Material Table S1) and in-hospital mortality (Supplementary Material Table S2) among the CRKP and CSKP groups was conducted. According to the results of the univariate analysis, variables with statistical differences between the death and survival groups were included in the multivariable logistic regression model. Multivariate analysis revealed that tracheal cannula or tracheotomy (within 30 days) ($P = 0.018$, OR = 0.014), severe sepsis ($P = 0.048$, OR = 0.012), and length of hospitalization after the onset of BSI

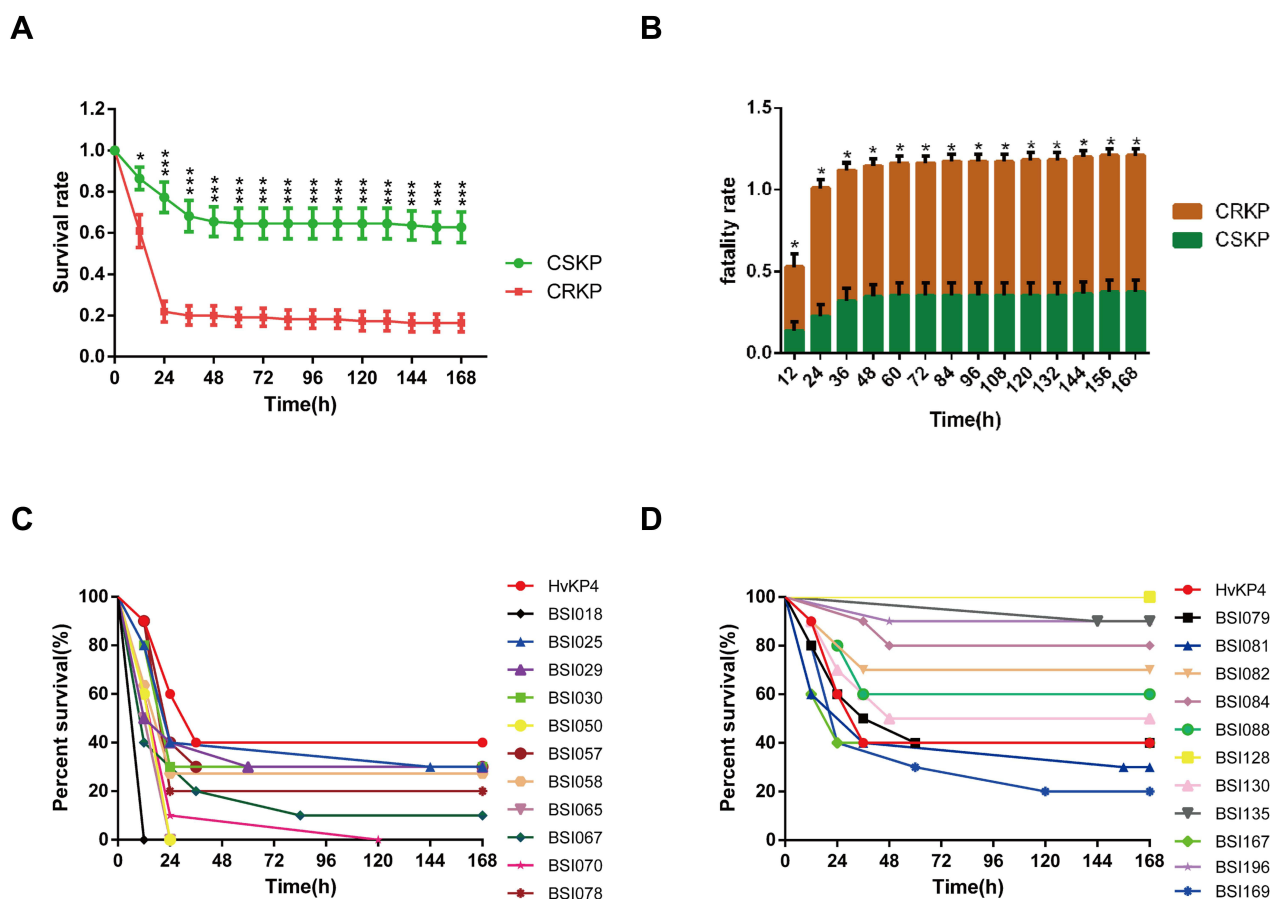


Figure 3 (A) Survival rates between CRKP and CSKP infections with *G. mellonella* infection model. (B) Fatality rates between CRKP and CSKP infections with *G. mellonella* infection model. (C) Kaplan–Meier survival curves of CRKP infections (11 strains) with *G. mellonella* infection model. (D) Kaplan–Meier survival curves of CSKP infections (11 strains) with *G. mellonella* infection model. *Klebsiella pneumoniae* strain HvKP4 as a positive control. *Means $P < 0.05$, **Means $P < 0.001$.

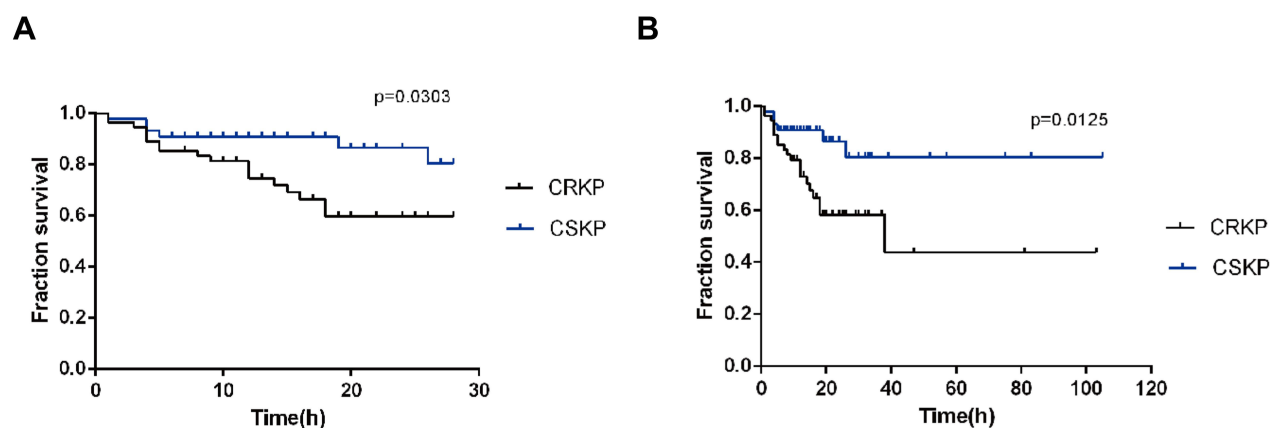


Figure 4 (A) Survival curve between CRKP and CSKP on Days from BSI onset. (B) Survival curve between CRKP and CSKP on Length of hospitalization after the onset of BSI. **Abbreviations:** KP, *Klebsiella pneumoniae*; CRKP, carbapenem-resistant KP; CSKP, carbapenem-susceptible KP.

($P = 0.004$, OR = 0.699) were independent risk factors for 28-day mortality of CRKP BSIs (Table 4). Multivariate analysis showed that carbapenem-resistant Enterobacteriales bacteremia ($P = 0.023$, OR = 0.009) and length of hospitalization after the onset of BSI ($P = 0.018$, OR = 0.816) were independent risk factors for in-hospital mortality of CRKP BSIs (Table 4).

Table 3 Risk Factors for CRKP BSIs with Multivariate Logistic Regression Analysis

Covariate	Univariate Analysis		Multivariate Analysis	P value
	OR (95% CI)	P value	OR (95% CI)	
Transfer from other hospital	2.809 (1.229–6.420)	0.014	0.374 (0.127–1.101)	0.074
Tracheal cannula or tracheotomy (within 30 days)	3.297 (1.460–7.446)	0.004	0.295 (0.102–0.852)	0.024
Active empiric antibiotic therapy	0.055 (0.015–0.198)	<0.01	0.008 (0.001–0.118)	<0.01
Active directed antibiotic therapy	0.336 (0.120–0.939)	0.038	0.085 (0.007–1.083)	0.058
Tigecycline-including treatment	0.080 (0.010–0.639)	0.017	0.061 (0.004–0.855)	0.038

Note: P values less than 0.05 are bolded.

Abbreviations: KP, *Klebsiella pneumoniae*; CRKP, carbapenem-resistant KP; CSKP, carbapenem susceptible KP; BSI, bloodstream infection; OR, odds ratio; CI, confidence interval.

Table 4 Risk Factors for Mortality of KP, CRKP and CSKP BSI with Multivariate Logistic Regression Analysis

Mortality		Items	p-value	OR	95% CI
28-day mortality	KP	Tracheal cannula or tracheotomy (within 30 days)	0.005	0.038	0.004–0.371
	KP	Septic shock	0.021	0.066	0.006–0.666
	KP	Length of hospitalization after the onset of BSI	0.002	0.838	0.748–0.939
	CRKP	Tracheal cannula or tracheotomy (within 30 days)	0.018	0.014	0.000–0.476
	CRKP	Severe sepsis	0.048	0.012	0.000–0.953
	CRKP	Length of hospitalization after the onset of BSI	0.004	0.699	0.550–0.889
In-hospital mortality	KP	Tracheal cannula or tracheotomy (within 30 days)	0.005	0.038	0.004–0.371
	KP	Septic shock	0.021	0.066	0.006–0.666
	KP	Length of hospitalization after the onset of BSI	0.002	0.838	0.748–0.939
	CRKP	Carbapenem-resistant Enterobacterales bacteremia	0.023	0.009	0.00–0.520
	CRKP	Length of hospitalization after the onset of BSI	0.018	0.816	0.689–0.965

Note: P values less than 0.05 are bolded.

Abbreviations: KP, *Klebsiella pneumoniae*; CRKP, carbapenem-resistant KP; CSKP, carbapenem susceptible KP; BSI, bloodstream infection; OR, odds ratio; CI, confidence interval.

Discussion

Carbapenems are therapeutic antimicrobials for severe bacterial infections including those caused by *K. pneumoniae* and the last line of treatment for many other infections following antibiotic failure.²² We conducted a retrospective study involving 103 *K. pneumoniae* BSI cases that occurred between 2010 and 2018 in 10 hospitals. We found that the separated CRKP showed an upward trend, not only in Guangdong but also in other parts of China.²³ (<http://www.carss.cn/Report/Details?aId=770>). Meanwhile, we found that the resistance rate to carbapenems and other antibiotics in *K. pneumoniae* is increasing.²⁴ According to the data on the drug-resistant bacteria monitoring network, the drug resistance rate of *K. pneumoniae* to carbapenems was 10.9% nationwide, up 0.8% compared to 2018. Our data showed that the resistance rate of the CRKP group to cephalosporins was 100%. In addition to FOS, the antibiotic resistance of the CRKP group was higher than that of the CSKP group. There were significant differences between the two groups in antibiotics, such as CTX, CAT, FEP, IPM, ETP, MEM, PTZ, AMK, GEN, and ATM. This demonstrated that the CRKP isolates harbored more severe antimicrobial resistance profiles than the CSKP isolates.

We found that the death rate was significantly higher in patients with CRKP infections than in those with CSKP infections, and some studies have shown that carbapenem resistance leads to 26–44% deaths.²⁵ To date, the impact of carbapenem resistance on health outcomes in Chinese patients with BSI has been evaluated in only a few studies.^{26–28} Our study demonstrated that the in-hospital mortality of patients was significantly higher in CRKP BSIs than in CSKP BSIs. CRKP-infected patients had more frequent healthcare experiences before the onset of BSI. More patients with CRKP BSIs had been admitted to the ICU, antibiotics, surgery within 30 days before BSI onset, immunosuppressive therapy, and previous hospitalization. ICU admission within 30 days, transfer from other hospitals, tracheal cannula or tracheotomy (within 30 days), change in antibiotic treatment after positive culture, and central vein catheterization were associated with the development of CRKP BSIs. Studies have shown a 15–79% mortality rate for *K. pneumoniae* BSI.^{29–32} In this study, the in-hospital mortality rate in the CRKP group was 39.3%. The data suggest that the survival rate of the CRKP group was lower than that of *K. pneumoniae* strain HvKP4 in *G. mellonella* infection model. In addition, we found that the survival rate of the CRKP group was lower than that of the CSKP group according to the Kaplan–Meier curve after the onset of BSI. Previous studies have reported an association between carbapenem resistance and BSIs.^{4,26} We further clarified that carbapenem resistance is a crucial factor in the clinical treatment of CRKP BSI.

Conclusion

In conclusion, we found that the antimicrobial resistance and mortality rate of the CRKP group were higher and broader than those of the CSKP group. The survival curve showed that the outcome and prognosis of the CRKP group were worse than those of the CSKP group were. Our data provide novel information to compare antimicrobial resistance, virulence, and outcomes between CRKP and CSKP isolates.

Ethical Approval

Ethical approval for this study was given by Zhongshan School of Medicine of Sun Yat-sen University under approval number 068.

Acknowledgments

This work was supported by the National Natural Science Foundation of China (grant number 82061128001, 81830103, and 81902123), Guangdong Natural Science Foundation (grant number 2017A030306012), National Key Research and Development Program (grant number 2017ZX10302301), Project of high-level health teams of Zhuhai at 2018 (The Innovation Team for Antimicrobial Resistance and Clinical Infection), 111 Project (grant number B12003), China Postdoctoral Science Foundation (grant number 2019M653192), Science, Technology & Innovation Commission of Shenzhen Municipality (grant number JCYJ20190807151601699).

Disclosure

None of the authors have any conflicts of interest related to this article.

References

1. Martin RM, Bachman MA. Colonization, infection, and the accessory genome of *Klebsiella pneumoniae*. *Front Cell Infect Microbiol*. 2018;8:4. doi:10.3389/fcimb.2018.00004
2. MacKenzie FM, Forbes KJ, Dorai-John T, Amyes SG, Gould IM. Emergence of a carbapenem-resistant *Klebsiella pneumoniae*. *Lancet*. 1997;350(9080):783. doi:10.1016/S0140-6736(05)62567-6
3. Clancy CJ, Chen L, Shields RK, et al. Epidemiology and molecular characterization of bacteremia due to carbapenem-resistant *Klebsiella pneumoniae* in transplant recipients. *Am J Transplant*. 2013;13(10):2619–2633. doi:10.1111/ajt.12424
4. Hussein K, Raz-Pasteur A, Finkelstein R, et al. Impact of carbapenem resistance on the outcome of patients' hospital-acquired bacteraemia caused by *Klebsiella pneumoniae*. *J Hosp Infect*. 2013;83(4):307–313.
5. Xu L, Sun X, Ma X. Systematic review and meta-analysis of mortality of patients infected with carbapenem-resistant *Klebsiella pneumoniae*. *Ann Clin Microbiol Antimicrob*. 2017;16(1):18. doi:10.1186/s12941-017-0191-3
6. Zarkotou O, Pournaras S, Tselioti P, et al. Predictors of mortality in patients with bloodstream infections caused by KPC-producing *Klebsiella pneumoniae* and impact of appropriate antimicrobial treatment. *Clin Microbiol Infect*. 2011;17(12):1798–1803. doi:10.1111/j.1469-0691.2011.03514.x

7. Zheng S-H, Cao S-J, Xu H, et al. Risk factors, outcomes and genotypes of carbapenem-nonsusceptible *Klebsiella pneumoniae* bloodstream infection: a three-year retrospective study in a large tertiary hospital in Northern China. *Infect Dis*. 2018;50(6):443–451. doi:10.1080/23744235.2017.1421772
8. Hu Y, Ping Y, Li L, Xu H, Yan X, Dai H. A retrospective study of risk factors for carbapenem-resistant *Klebsiella pneumoniae* acquisition among ICU patients. *J Infect Dev Ctries*. 2016;10(3):208–213. doi:10.3855/jidc.6697
9. Wu D, Cai J, Liu J. Risk factors for the acquisition of nosocomial infection with carbapenem-resistant *Klebsiella pneumoniae*. *South Med J*. 2011;104(2):106–110. doi:10.1097/SMJ.0b013e318206063d
10. Huang W, Qiao F, Zhang Y, et al. In-hospital medical costs of infections caused by carbapenem-resistant *Klebsiella pneumoniae*. *Clin Infect Dis*. 2018;67(suppl_2):S225–S230. doi:10.1093/cid/ciy642
11. Zhang Z, Sun Z, Tian L. Antimicrobial resistance among pathogens causing bloodstream infections: a multicenter surveillance report over 20 years (1998–2017). *Infect Drug Resist*. 2022;15:249–260. doi:10.2147/IDR.S344875
12. Lou T, Du X, Zhang P, et al. Risk factors for infection and mortality caused by carbapenem-resistant *Klebsiella pneumoniae*: a large multicentre case-control and cohort study. *J Infect*. 2022;84:637–647. doi:10.1016/j.jinf.2022.03.010
13. Cao Z, Yue C, Kong Q, et al. Risk factors for a hospital-acquired carbapenem-resistant bloodstream infection: a five-year retrospective study. *Infect Drug Resist*. 2022;15:641–654. doi:10.2147/IDR.S342103
14. Pan H, Lou Y, Zeng L, et al. Infections caused by carbapenemase-producing *Klebsiella pneumoniae*: microbiological characteristics and risk factors. *Microb Drug Resist*. 2019;25(2):287–296. doi:10.1089/mdr.2018.0339
15. Giacobbe DR, Del Bono V, Trecarichi EM, et al. Risk factors for bloodstream infections due to colistin-resistant KPC-producing *Klebsiella pneumoniae*: results from a multicenter case-control study. *Clin Microbiol Infect*. 2015;21(12):1106.e1101–1106.e1108. doi:10.1016/j.cmi.2015.08.001
16. Ben-David D, Kordevani R, Keller N, et al. Outcome of carbapenem resistant *Klebsiella pneumoniae* bloodstream infections. *Clin Microbiol Infect*. 2012;18(1):54–60. doi:10.1111/j.1469-0691.2011.03478.x
17. Callahan BJ, Wong J, Heiner C, et al. High-throughput amplicon sequencing of the full-length 16S rRNA gene with single-nucleotide resolution. *Nucleic Acids Res*. 2019;47(18):e103. doi:10.1093/nar/gkz569
18. CLSI. Clinical and Laboratory Standards Institute. *Performance Standards for Antimicrobial Susceptibility Testing*. 32nd ed. 2022: M100–S30.
19. Magiorakos AP, Srinivasan A, Carey RB, et al. Multidrug-resistant, extensively drug-resistant and pandrug-resistant bacteria: an international expert proposal for interim standard definitions for acquired resistance. *Clin Microbiol Infect*. 2012;18(3):268–281. doi:10.1111/j.1469-0691.2011.03570.x
20. McLaughlin MM, Advincula MR, Malczynski M, Barajas G, Qi C, Scheetz MH. Quantifying the clinical virulence of *Klebsiella pneumoniae* producing carbapenemase *Klebsiella pneumoniae* with a *Galleria mellonella* model and a pilot study to translate to patient outcomes. *BMC Infect Dis*. 2014;14:31. doi:10.1186/1471-2334-14-31
21. Gu D, Dong N, Zheng Z, et al. A fatal outbreak of ST11 carbapenem-resistant hypervirulent *Klebsiella pneumoniae* in a Chinese hospital: a molecular epidemiological study. *Lancet Infect Dis*. 2018;18(1):37–46. doi:10.1016/S1473-3099(17)30489-9
22. Livermore DM. The impact of carbapenemases on antimicrobial development and therapy. *Curr Opin Investig Drugs*. 2002;3(2):218–224.
23. Hu Y, Liu C, Shen Z, et al. Prevalence, risk factors and molecular epidemiology of carbapenem-resistant in patients from Zhejiang, China, 2008–2018. *Emerg Microbes Infect*. 2020;9(1):1771–1779. doi:10.1080/22221751.2020.1799721
24. Nordmann P, Cuzon G, Naas T. The real threat of *Klebsiella pneumoniae* carbapenemase-producing bacteria. *Lancet Infect Dis*. 2009;9(4):228–236. doi:10.1016/S1473-3099(09)70054-4
25. Falagas ME, Tansarli GS, Karageorgopoulos DE, Vardakas KZ. Deaths attributable to carbapenem-resistant Enterobacteriaceae infections. *Emerg Infect Dis*. 2014;20(7):1170–1175. doi:10.3201/eid2007.121004
26. Zheng X, Wang J-F, Xu W-L, Xu J, Hu J. Clinical and molecular characteristics, risk factors and outcomes of Carbapenem-resistant bloodstream infections in the intensive care unit. *Antimicrob Resist Infect Control*. 2017;6:102. doi:10.1186/s13756-017-0256-2
27. Zhang Y, Guo LY, Song WQ, Wang Y, Dong F, Liu G. Risk factors for carbapenem-resistant *K. pneumoniae* bloodstream infection and predictors of mortality in Chinese paediatric patients. *BMC Infect Dis*. 2018;18:248. doi:10.1186/s12879-018-3160-3
28. Tian L, Tan R, Chen Y, et al. Epidemiology of *Klebsiella pneumoniae* bloodstream infections in a teaching hospital: factors related to the carbapenem resistance and patient mortality. *Antimicrob Resist Infect Control*. 2016;5:48. doi:10.1186/s13756-016-0145-0
29. Liu YM, Li BB, Zhang YY, et al. Clinical and molecular characteristics of emerging hypervirulent *Klebsiella pneumoniae* bloodstream infections in mainland China. *Antimicrob Agents Chemother*. 2014;58(9):5379–5385. doi:10.1128/AAC.02523-14
30. Falcone M, Russo A, Iacovelli A, et al. Predictors of outcome in ICU patients with septic shock caused by *Klebsiella pneumoniae* carbapenemase-producing *K. pneumoniae*. *Clin Microbiol Infect*. 2016;22(5):444–450. doi:10.1016/j.cmi.2016.01.016
31. Liu Q, Li W, Du X, et al. Risk and prognostic factors for multidrug-resistant *Acinetobacter baumannii* complex bacteremia: a retrospective study in a tertiary hospital of West China. *PLoS One*. 2015;10(6):e0130701. doi:10.1371/journal.pone.0130701
32. da Silva KE, Maciel WG, Sacchi FPC, et al. Risk factors for KPC-producing *Klebsiella pneumoniae*: watch out for surgery. *J Med Microbiol*. 2016;65(6):547–553. doi:10.1099/jmm.0.000254

Infection and Drug Resistance

Dovepress

Publish your work in this journal

Infection and Drug Resistance is an international, peer-reviewed open-access journal that focuses on the optimal treatment of infection (bacterial, fungal and viral) and the development and institution of preventive strategies to minimize the development and spread of resistance. The journal is specifically concerned with the epidemiology of antibiotic resistance and the mechanisms of resistance development and diffusion in both hospitals and the community. The manuscript management system is completely online and includes a very quick and fair peer-review system, which is all easy to use. Visit <http://www.dovepress.com/testimonials.php> to read real quotes from published authors.

Submit your manuscript here: <https://www.dovepress.com/infection-and-drug-resistance-journal>