

XGBoost Machine Learning Algorithm for Prediction of Outcome in Aneurysmal Subarachnoid Hemorrhage

Ruoran Wang^{1,*}, Jing Zhang^{1,*}, Baoyin Shan¹, Min He², Jianguo Xu¹ 

¹Department of Neurosurgery, West China Hospital, Sichuan University, Chengdu, Sichuan Province, People's Republic of China; ²Department of Critical care medicine, West China Hospital, Sichuan University, Chengdu, Sichuan Province, People's Republic of China

*These authors contributed equally to this work

Correspondence: Jianguo Xu, Department of Neurosurgery, West China Hospital, Sichuan University, No. 37, Guoxue Alley, Chengdu, 610041, People's Republic of China, Email xujg@scu.edu.cn; Min He, Department of Critical care medicine, West China Hospital, Sichuan University, No. 37, Guoxue Alley, Chengdu, 610041, People's Republic of China, Email hemin19910306@wchscu.cn

Background: Patients suffered aneurysmal subarachnoid hemorrhage (aSAH) usually develop poor survival and functional outcome. Evaluating aSAH patients at high risk of poor outcome is necessary for clinicians to make suitable therapeutical strategy. This study is conducted to develop prognostic model using XGBoost (extreme gradient boosting) algorithm in aSAH.

Methods: A total of 351 aSAH patients admitted to West China hospital were identified. Patients were divided into training set and test set with ratio of 7:3 to testify the predictive value of XGBoost based prognostic model. Additionally, logistic regression model was also constructed and compared with XGBoost based model. Area under the receiver operating characteristic curve (AUC), sensitivity and specificity were calculated to evaluate the value of XGBoost and logistic regression.

Results: There were 74 (21.1%) non-survivors and 148 (42.1%) patients with unfavorable functional outcome. Non-survivors had older age ($p=0.025$), lower Glasgow coma scale (GCS) ($p<0.001$), higher World Federation of Neurosurgical Societies WFNS score ($p<0.001$), mFisher score ($p<0.001$). The incidence of intraventricular hemorrhage (IVH) ($p=0.025$) and delayed cerebral ischemia (DCI) ($p<0.001$) was higher in non-survivors than survivors. The AUC of XGBoost model for predicting mortality and unfavorable functional outcome were 0.950 and 0.958, which were higher than 0.767 and 0.829 of logistic regression model.

Conclusion: XGBoost based model is more precise than logistic regression model in predicting outcome of aSAH patients. Using XGBoost prognostic model is helpful for clinicians to identify high-risk aSAH patients and therefore strengthen medical care.

Keywords: machine learning, artificial intelligence, extreme gradient boosting, aneurysmal subarachnoid hemorrhage, prognosis

Introduction

Occurred widely with the incidence of nearly 9.1 per 100 thousand persons annually, aneurysmal subarachnoid hemorrhage (aSAH) leads to high morbidity and mortality around the world.^{1,2} Nearly a half of aSAH patients suffer poor survival outcome or unrecovered functional independence.³⁻⁵ In addition to initial brain injury severity, secondary complications such as re-bleeding, delayed cerebral ischemia (DCI), acute hydrocephalus and seizure could lead to deteriorating outcome of aSAH patients.⁶⁻⁸ Therefore, predicting the outcome of aSAH patients in acute phase is essential for physicians to reasonably classify patients' severity and sequentially adopt different treatment strategies. Many clinical scores including Hunt and Hess score, World Federation of Neurosurgical Societies (WFNS) score and modified Fisher (mFisher) score has been utilized to assess brain severity of aSAH patients. These scores are mainly developed based on focal neurological signs, state of consciousness or radiological findings. Whereas intracranial complications and pathophysiological changes of extracranial organs function during hospitalizations which also play important role in disease progression of aSAH are not included into existing score. Some researches combined these complications and biochemical parameters into prognostic models of aSAH.⁹⁻¹⁴ However, these models were mainly

constructed through linear regression such as Cox regression and logistic regression which strictly requires high quality of data and could not handle missing values efficiently. And some markers showing non-linear relationship with outcome of aSAH such as serum sodium and serum chloride may not be applicable to develop linear relationship based prediction.^{15–18}

As a kind of artificial intelligence, machine learning algorithms could improve event prediction accuracy due to their advantages in recognizing complex data pattern and dealing with nonlinear relationship efficiently. Recently, the importance of machine learning in clinical decision making has been gradually recognized by clinicians. Machine learning based prediction approaches could automatically provide warning signals to physicians about possible impending high-risk events of patients and assist physicians to make suitable therapeutic strategies. The prognostic value of some machine learning algorithms such as decision tree, random forest, support vector machine and Naive Bayes have been explored in aSAH patients.^{19–26} Developed by Tianqi Chen, the Extreme Gradient Boosting (XGBoost) algorithm performs well in both computational speed and model accuracy. One previous study explored performance of various machine learning algorithms including XGBoost on predicting mortality of non-traumatic SAH patients.²³ While only records of laboratory tests and drugs usage were collected for training machine learning models without inclusion of complications such as DCI and hydrocephalus which may significantly affect prognosis of aSAH patients. The machine learning algorithm may show its superiority in outcome prediction when more clinically significant factors were included or framework of datasets were more complicated. Additionally, this study did not evaluate the value of XGBoost on predicting functional outcome of aSAH patients. Therefore, we designed this study to develop XGBoost models incorporating complications and other clinical variables to predict mortality and unfavorable functional outcome in aSAH patients and further compare XGBoost models' value with conventional logistic regression based prediction approach.

Patients

Patients admitted to West China hospital and received treatments in neuro-intensive care unit (NICU) for aSAH between January 2017 and June 2019 were identified. The diagnosis of aSAH was confirmed by computed tomography angiography (CTA) or digital subtraction angiography (DSA). The exclusion criteria were presented as follows: (1) SAH caused by other diseases including cerebral vascular malformation, Moyamoya disease, trauma; (2) history of other neurologic diseases such as intracranial tumor and stroke; (3) admitted to our hospital 48 hours after initial symptoms onset; (4) transferred from other medical centers; (5) Incomplete records of included variables. Finally, 351 aSAH patients were included in this study. This study obtained approval from the West China hospital ethics committee. All procedures involved in this study were in accordance with the ethical standards of the Helsinki declaration. We have obtained the informed consent from all patients or their legal guardians.

Data Collection

Collected variables included (1) patients demographics and vital signs on admission; (2) comorbidities (diabetes mellitus, hypertension); (3) GCS, WFNS, mFisher score; (4) aneurysm location and occurrence of Intraventricular hemorrhage; (5) laboratory tests (glucose, hemoglobin, platelet) analyzed from the first blood sample once admitted; (6) complications during hospitalization including acute hydrocephalus, delayed cerebral ischemia (DCI) and intracranial infection. The DCI was diagnosed based on one of the following criteria: (1) occurrence of focal neurological impairment; (2) a dramatic decrease of GCS at least 2 points (decrease of total score or on one of GCS individual components, and excluded other causes discovered by clinical assessments and brain image). The outcome of this study was mortality and unfavorable functional outcome (defined by GOS<4). Patients were followed up until 3 months after admission.

Statistical Analysis

Normality of included variables was verified by Kolmogorov–Smirnov test. Normally distributed and non-normally distributed variables were presented in the form of mean \pm standard deviation and median (interquartile range), respectively. And categorical variables were shown as numbers (percentage). Independent Student's *t*-test and Mann–Whitney *U*-test were utilized to compare the difference between two groups of normally distributed and non-normally distributed variables. χ^2 test or Fisher test was performed to analyze the difference of categorical variables.

Based on gradient boosted decision trees, the XGBoost algorithm applies a second-order Taylor expansion to calculate the loss function and has an excellent performance in both computational speed and prediction accuracy.²⁷ The XGBoost continuously split features to grow trees to iteratively fit the residual of the last prediction model. K trees would be developed after training process. The characteristics of one specific sample correspond to specific leaf node of each tree with a score. The predicted value of one specific sample would be obtained by adding up scores of each tree. Gathering a strong classifier from a set of weak classifiers, XGBoost displays following advantages: (1) handling missing values effectively; (2) preventing overfitting; (3) reducing running time by the parallel and distributed calculation. The hyper-parameters of XGBoost were set with max depth of 10, learning rate of 0.3 and iterations of 50, considering both accuracy and over fitting. To assess the predictive value of XGBoost algorithm in aSAH patients, included patients were divided into training set and test set with ratio of 7:3. Logistic regression prediction model was also developed by univariate and multivariate logistic regression with forward stepwise method. To compare the predictive value of XGBoost and logistic regression, receiver operating characteristics (ROC) curves of these two models were drawn and area under the ROC curve (AUC) was calculated. In addition, sensitivity, specificity, accuracy, false positive rate (FPR), false negative rate (FNV), positive predictive value (PPV) and negative predictive value (NPV) of these two models were calculated and compared.

Two-sided P value <0.05 was considered being statistically significant. R (version 3.6.1; R Foundation) was applied for all statistical analyses and figures drawing. And the XGBoost model was developed using “xgboost” package in R.

Results

Patients Characteristics

A total of 351 aSAH patients were included into this study with mortality of 21.1% (Table 1). Non-survivors had higher age than survivors (60 vs 55, $p=0.025$). The complicated rate of diabetes mellitus and hypertension was 4.8% and 43.9%, respectively. GCS was significantly lower in non-survivors (7 vs 15, $p<0.001$) while WFNS (4 vs 1, $p<0.001$) and mFisher (3 vs 2, $p<0.001$) were significantly higher in non-survivors. Regarding the aneurysm location, anterior circulation accounted for most of patients with incidence of 76.9%. Compared with survivors, non-survivors had higher incidence of posterior circulation aneurysm (10.8% vs 3.2%, $p=0.024$). In addition, intraventricular hemorrhage was also more likely to be observed in non-survivors (12.2% vs 4.3%, $p=0.025$). Results of laboratory tests showed non-survivors had higher level of blood glucose (7.57 vs 6.62, $p<0.001$). Finally, the incidence of delayed cerebral ischemia was higher in non-survivors group (54.1% vs 13.0%, $p<0.001$) while hydrocephalus and intracranial infection did not show statistical significance between these two groups. The incidence of unfavorable functional outcome in this study was 42.1%.

Predictive Value of XGBoost and Logistic Regression

The feature importance of XGBoost for predicting mortality and unfavorable functional outcome was shown as Figure 1. GCS, DCI and heart rate ranked the top three of feature importance for predicting mortality while DCI, GCS and age ranked the top three of feature importance for predicting unfavorable functional outcome. The detail of logistic models was shown in Supplementary Table 1 and Supplementary Table 2. The AUC of XGBoost and logistic regression for predicting mortality was 0.950 and 0.767, respectively (Table 2) (Figure 2). XGBoost had higher predictive accuracy than logistic regression (0.981 vs 0.830). Sensitivity and specificity of XGBoost was 1.000 and 0.900, which was also higher than 0.837 and 0.750 of logistic regression. As for predicting unfavorable functional outcome, the AUC of XGBoost and logistic regression was 0.958 and 0.829, respectively. XGBoost had higher predictive accuracy than logistic regression (0.962 vs 0.764). Sensitivity and specificity of XGBoost was 0.984 and 0.933, which was higher than 0.836 and 0.756 of logistic regression.

Discussion

Our study indicated that XGBoost based prediction approach was more precise than conventional logistic regression prediction in evaluating prognosis of aSAH patients. The AUC of XGBoost approach for predicting mortality and unfavorable functional outcome was 0.950 and 0.958, which indicated excellent prediction accuracy. There were several studies exploring the prognostic value of other machine learning algorithm in aSAH patients. A study conducted by Nora

Table 1 Baseline Characteristics of Included aSAH Patients

Variables	Overall Patients (n=351)	Survivors (n=277, 78.9%)	Non-Survivors (n=74, 21.1%)	p
Age (years)	56 (49–65)	55 (49–64)	60 (51–68)	0.025
Female gender	231 (65.8%)	183 (66.1%)	48 (64.9%)	0.956
Prehospital time (hours)	9 (5–24)	9 (5–24)	9 (4–24)	0.875
Smoking	59 (16.8%)	47 (17.0%)	12 (16.2%)	1.000
Alcoholism	47 (13.4%)	41 (14.8%)	6 (8.1%)	0.190
Diabetes mellitus	17 (4.8%)	15 (5.4%)	2 (2.7%)	0.509
Hypertension	154 (43.9%)	125 (45.1%)	29 (39.2%)	0.434
Systolic blood pressure (mmHg)	150 (134–170)	152 (130–170)	146 (133–172)	0.996
Diastolic blood pressure (mmHg)	87 (78–98)	87 (77–98)	88 (79–97)	0.248
Heart rate (min ⁻¹)	79 (70–89)	79 (70–88)	80 (65–97)	0.741
GCS	15 (9–15)	15 (12–15)	7 (5–12)	<0.001
WFNS	2 (1–4)	1 (1–4)	4 (4–5)	<0.001
mFisher	2 (2–3)	2 (2–3)	3 (2–4)	<0.001
Location				0.024
Anterior circulation	270 (76.9%)	218 (78.7%)	52 (70.3%)	
Posterior circulation	17 (4.8%)	9 (3.2%)	8 (10.8%)	
Multiple ansuryism	64 (18.2%)	50 (18.1%)	14 (18.9%)	
Intraventricular hemorrhage	21 (6.0%)	12 (4.3%)	9 (12.2%)	0.025
Glucose (mmol/L)	6.93 (5.75–8.18)	6.62 (5.66–7.91)	7.57 (6.99–9.23)	<0.001
Hemoglobin (g/L)	125 (110–135)	124 (109–135)	127 (114–136)	0.141
Platelet (×10 ⁹)	161.85 (52.24)	159.65 (48.72)	170.11 (63.40)	0.126
Hydrocephalus	34 (9.7%)	24 (8.7%)	10 (13.5%)	0.302
Delayed cerebral ischemia	76 (21.7%)	36 (13.0%)	40 (54.1%)	<0.001
Intracranial infection	37 (10.5%)	29 (10.5%)	8 (10.8%)	1.000
GOS	4 (3–4)	4 (3–4)	1 (1–1)	<0.001
GOS (1–3)	148 (42.1%)	74 (26.7%)	74 (100%)	<0.001
Length of ICU stay (days)	6 (4–14)	6 (4–15)	6 (2–10)	0.255
Length of hospital stay (days)	15 (10–23)	16 (11–24)	9 (5–16)	<0.001

Abbreviations: GCS, Glasgow coma scale; WFNS, World Federation of Neurosurgical Societies; mFisher, modified Fisher; GOS, Glasgow outcome scale.

Franziska Dengler in 2020 showed that machine learning algorithms including CatBoost tree boosting, support vector machine classifier, Naive Bayes classifier and multilayer perceptron artificial neural net was comparable but not superior to traditional logistic regression in predicting outcome of aSAH patients.²¹ And the predictive value of these algorithms was not superior than previously developed clinical-radiographic scores such as Hunt-Huss, WFNS, mFisher and Barrow

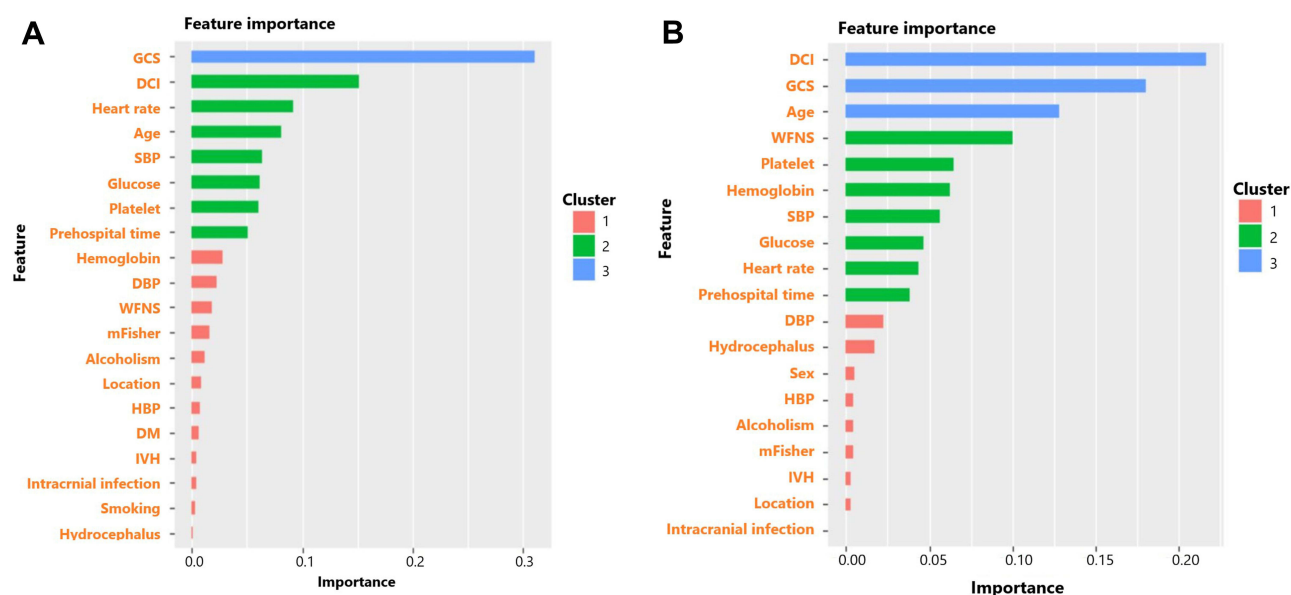


Figure 1 (A) Feature importance of factors in XGBoost for predicting mortality of aSAH patients; (B) Feature importance of factors in XGBoost for predicting 3-month unfavorable functional outcome of aSAH patients. The feature importance was automatically divided into three clusters by XGBoost according to the importance rank.

Neurological Institute (BNI) Score. However, this study only included basic clinical and radiographic features and did not collect intracranial complications and other biochemical parameters. The advantages of dealing with high dimensional dataset of machine learning algorithm may not be highlighted in datasets with simple framework. Instead, the research conducted by Nicolai Maldaner in 2020 applied machine learning algorithms into outcome prediction of aSAH and included complications during hospitalizations including rebleeding, DCI and epileptic seizure. And results of this study presented that Chi-square Automatic Interaction Detectors (CHAID) was the best algorithm for predicting favorable functional outcome at discharge of aSAH patients. Adding complications and medical treatments related information into machine learning based model could improve the AUC from 0.79 to 0.85. Guido de Jong performed a study comparing predictive value of feedforward artificial neural networks (ffANN) with Subarachnoid Haemorrhage International Trialists (SAHIT) and VASOGRADE scoring systems for predicting prognosis and DCI using basic demographics and aneurysm related variables.²² It was discovered that ffANN showed equal performance when compared with SAHIT and VASOGRADE. In summary, machine learning algorithms may show its superiority in outcome prediction when more clinically significant factors were included or framework of datasets were more complicated. Therefore, complications during hospitalizations and biochemical parameters on admission of aSAH patients were both included when we developed XGBoost based prediction approach.

Based on gradient boosted decision trees, the XGBoost algorithm applied a second-order Taylor expansion to calculate the loss function and performs well in both computational speed and predictive precision.²⁷ In the XGBoost based approach for predicting mortality of aSAH patients in our study, the top order of feature importance sequentially was GCS, DCI, heart rate, age, systolic blood pressure, glucose, platelet and prehospital time. And in the XGBoost based approach for predicting 3-month unfavorable functional outcome of aSAH patients, the top order of feature importance sequentially was DCI, GCS, age, WFNS, platelet, hemoglobin, systolic blood pressure, glucose, heart rate and prehospital time. The GCS score is a widely used assessment tool of brain injury severity for several decades. Whereas some limitations exist in the clinical practice including inability to accurately evaluate severity when patients suffered alcoholism, intubated or received sedatives. Consequently, many studies combine other risk factors with GCS to improve prognostic accuracy and stability. Characterized as local neurological deficit, decreased GCS and cerebral ischemia presented in radiological examinations, the DCI is a severe neurological complication which is closely correlated with poor prognosis of aSAH patients. Multiple factors may play significant role in the process of DCI including cerebral artery vasospasm, micro-thrombosis, cerebrovascular dysregulation, parenchymal inflammation and cortical spreading

Table 2 The Prognostic Value Comparison Between Logistic Regression and Xgboost Algorithm

	AUC	Sensitivity	Specificity	Youden Index	Accuracy	FPR	FNR	PPV	NPV	F Score
Mortality										
Logistic regression	0.767	0.837	0.750	0.587	0.830	0.116	0.400	0.545	0.905	0.860
Xgboost algorithm	0.950	1.000	0.900	0.900	0.981	0.000	0.100	1.000	0.977	0.990
GOS (1–3)										
Logistic regression	0.829	0.836	0.756	0.592	0.764	0.098	0.422	0.813	0.743	0.803
Xgboost algorithm	0.958	0.984	0.933	0.917	0.962	0.016	0.067	0.977	0.952	0.976

Abbreviations: AUC, area under the receiver operating characteristics curve; FPR, false positive rate; FNR, false negative rate; PPV, positive predictive value; NPV, negative predictive value; GOS, Glasgow outcome scale.

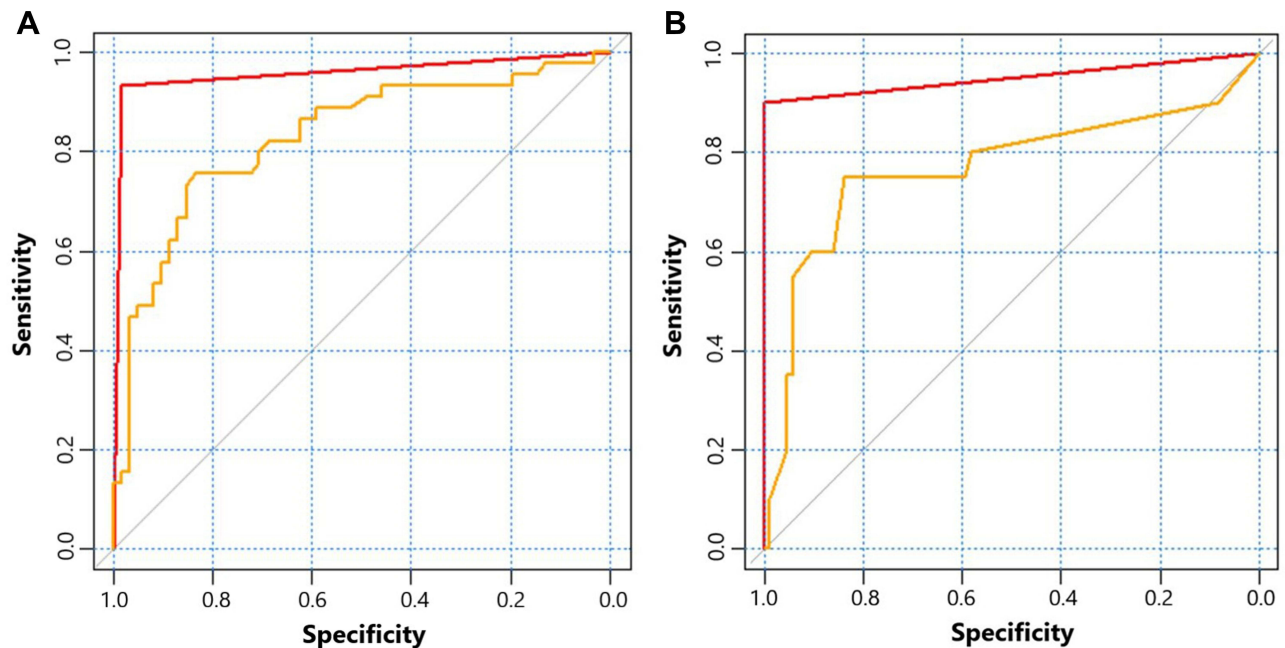


Figure 2 (A) receiver operating characteristic curves of XGBoost (red) and logistic regression (yellow) for predicting mortality of aSAH patients; (B) receiver operating characteristic curves of XGBoost (red) and logistic regression (yellow) for predicting 3-month unfavorable functional outcome of aSAH patients.

depolarization.^{28,29} The abnormal change of heart rate and systolic blood pressure may reflect influenced cardiac function in aSAH patients. Actually, cardiac complications frequently occur in aSAH patients and are commonly manifested as electrocardiogram abnormalities and stress cardiomyopathy.^{30–32} Caused by multiple factors such as neurogenic activation of sympathetic system, immune response, the cardiac dysfunction may lead to cerebral hypoperfusion and DCI which in turn aggravate the adverse progress of aSAH patients.^{32–34} Increased age also indicates higher likelihood of poor prognosis due to more underlying diseases, worse nutritional status and higher incidence of frailty.^{35–37} Finally, glucose and platelet also showed a degree of feature importance in the XGBoost prediction approach. It has been confirmed hyperglycemia and platelet play critical role of in the pathophysiological process of aSAH and correlated with prognosis of these patients.^{13,38–42} In summary, our constructed XGBoost prediction approach incorporating above mentioned risk factors may reflect more comprehensive condition of aSAH patients and show better predictive accuracy and stability than conventional logistic regression prediction.

This study had several limitations. Firstly, this was an observational research conducted in single medical center. aSAH patients included in this study were those who received critical care in NICU. Further studies conducted in multiple medical centers with larger sample size are worthwhile to externally verify the predictive value of XGBoost algorithm in general aSAH patients and try to avoid selection bias. Secondly, though XGBoost algorithm was confirmed as a precise prediction approach in aSAH patients, it was not developed into a conveniently used program in this study. Future works should be performed to translate this algorithm into clinical practice. Thirdly, some complications of clinical significance such as seizure, re-bleeding, pneumonia were not included due to lack of evaluation and records. Studies collecting these variables may further improve the prediction accuracy of our proposed models.

Conclusion

The XGBoost algorithm based prediction approach is more effective than logistic regression model in prognostication of aSAH patients. Developing XGBoost prediction approach could instruct clinicians adjust therapeutic strategies and strengthen clinical care for aSAH patients.

Data Sharing Statement

The datasets used for the current study are available from the corresponding author on reasonable request.

Ethics Approval and Informed Consent

This study obtained approval from the West China hospital ethics committee (Number: 20180359). All procedures involved in this study were in accordance with the ethical standards of the Helsinki declaration.

Consent for Publication

We have obtained the informed consent from all patients or their legal guardians.

Author Contributions

All authors made substantial contributions to conception and design, acquisition of data, or analysis and interpretation of data; took part in drafting the article or revising it critically for important intellectual content; agreed to submit to the current journal; gave final approval of the version to be published; and agree to be accountable for all aspects of the work.

Funding

This work was supported by Sichuan Science and Technology Innovation Seedling Project (No.21-YCG021, sub-No. 2021026), Key research and development project of science and technology department of Sichuan Province (2019YFS0392), and the 1.3.5 project for disciplines of excellence, West China Hospital, Sichuan University (ZYJC18007).

Disclosure

Ruoran Wang and Jiang Zhang are the co-first authors of this manuscript. The authors declare that they have no competing interests.

References

1. de Rooij NK, Linn FH, van der Plas JA, Algra A, Rinkel GJ. Incidence of subarachnoid haemorrhage: a systematic review with emphasis on region, age, gender and time trends. *J Neurol Neurosurg Psychiatry*. 2007;78(12):1365–1372. doi:10.1136/jnnp.2007.117655
2. Lovelock CE, Rinkel GJ, Rothwell PM. Time trends in outcome of subarachnoid hemorrhage: population-based study and systematic review. *Neurology*. 2010;74(19):1494–1501. doi:10.1212/WNL.0b013e3181dd42b3
3. Maldaner N, Steinsiepe VK, Goldberg J, et al. Patterns of care for ruptured aneurysms of the middle cerebral artery: analysis of a Swiss national database (Swiss SOS). *J Neurosurg*. 2019;4:1–10.
4. Molyneux AJ, Kerr RS, Yu LM, et al. International subarachnoid aneurysm trial (ISAT) of neurosurgical clipping versus endovascular coiling in 2143 patients with ruptured intracranial aneurysms: a randomised comparison of effects on survival, dependency, seizures, rebleeding, subgroups, and aneurysm occlusion. *Lancet*. 2005;366(9488):809–817. doi:10.1016/S0140-6736(05)67214-5
5. Schatlo B, Fung C, Fathi AR, et al. Introducing a nationwide registry: the Swiss study on aneurysmal subarachnoid haemorrhage (Swiss SOS). *Acta Neurochirurgica*. 2012;154(12):2173–2178. doi:10.1007/s00701-012-1500-4
6. Gerner ST, Reichl J, Custal C, et al. Long-Term Complications and Influence on Outcome in Patients Surviving Spontaneous Subarachnoid Hemorrhage. *Cerebrovascular Dis*. 2020;49(3):307–315. doi:10.1159/000508577
7. Hammer A, Erbguth F, Hohenhaus M, et al. Neurocritical care complications and interventions influence the outcome in aneurysmal subarachnoid hemorrhage. *BMC Neurol*. 2021;21(1):27. doi:10.1186/s12883-021-02054-6
8. Unda SR, Labagnara K, Birnbaum J, et al. Impact of hospital-acquired complications in long-term clinical outcomes after subarachnoid hemorrhage. *Clin Neurol Neurosurg*. 2020;194:105945. doi:10.1016/j.clineuro.2020.105945
9. Schuss P, Hadjiathanasiou A, Brandecker S, Güresir A, Vatter H, Güresir E. Elevated C-reactive protein and white blood cell count at admission predict functional outcome after non-aneurysmal subarachnoid hemorrhage. *J Neurol*. 2018;265(12):2944–2948. doi:10.1007/s00415-018-9091-5
10. Zhang D, Yan H, Wei Y, et al. C-Reactive Protein/Albumin Ratio Correlates With Disease Severity and Predicts Outcome in Patients With Aneurysmal Subarachnoid Hemorrhage. *Front Neurol*. 2019;10:1186. doi:10.3389/fneur.2019.01186
11. Al-Mufti F, Misiolek KA, Roh D, et al. White Blood Cell Count Improves Prediction of Delayed Cerebral Ischemia Following Aneurysmal Subarachnoid Hemorrhage. *Neurosurgery*. 2019;84(2):397–403. doi:10.1093/neuros/nyy045
12. Mahta A, Azher AI, Moody S, et al. Association of Early White Blood Cell Trend with Outcomes in Aneurysmal Subarachnoid Hemorrhage. *World Neurosurg*. 2021;151:e803–e809. doi:10.1016/j.wneu.2021.04.124
13. Tao C, Wang J, Hu X, Ma J, Li H, You C. Clinical Value of Neutrophil to Lymphocyte and Platelet to Lymphocyte Ratio After Aneurysmal Subarachnoid Hemorrhage. *Neurocrit Care*. 2017;26(3):393–401. doi:10.1007/s12028-016-0332-0
14. Giede-Jeppe A, Reichl J, Sprügel MI, et al. Neutrophil-to-lymphocyte ratio as an independent predictor for unfavorable functional outcome in aneurysmal subarachnoid hemorrhage. *J Neurosurg*. 2019;132(2):400–407. doi:10.3171/2018.9.JNS181975
15. Rodríguez-Triviño CY, Torres Castro I, Dueñas Z. Hypochloremia in Patients with Severe Traumatic Brain Injury: a Possible Risk Factor for Increased Mortality. *World Neurosurg*. 2019;124:e783–e788. doi:10.1016/j.wneu.2019.01.025

16. Ditch KL, Flahive JM, West AM, Osgood ML, Muehlschlegel S. Hyperchloremia, not Concomitant Hyponatremia, Independently Predicts Early Mortality in Critically Ill Moderate-Severe Traumatic Brain Injury Patients. *Neurocrit Care*. 2020;33(2):533–541. doi:10.1007/s12028-020-00928-0
17. Okazaki T, Hifumi T, Kawakita K, et al. Target Serum Sodium Levels During Intensive Care Unit Management of Aneurysmal Subarachnoid Hemorrhage. *Shock*. 2017;48(5):558–563. doi:10.1097/SHK.0000000000000897
18. Eagles ME, Tso MK, Macdonald RL. Significance of fluctuations in serum sodium levels following aneurysmal subarachnoid hemorrhage: an exploratory analysis. *J Neurosurg*. 2018;131(2):420–425. doi:10.3171/2018.3.JNS173068
19. Savarraj JPJ, Hergenroeder GW, Zhu L, et al. Machine Learning to Predict Delayed Cerebral Ischemia and Outcomes in Subarachnoid Hemorrhage. *Neurology*. 2021;96(4):e553–e562. doi:10.1212/WNL.00000000000011211
20. Maldaner N, Zeitlberger AM, Sosnova M, et al. Development of a Complication- and Treatment-Aware Prediction Model for Favorable Functional Outcome in Aneurysmal Subarachnoid Hemorrhage Based on Machine Learning. *Neurosurgery*. 2021;88(2):E150–e157. doi:10.1093/neuros/nyaa401
21. Dengler NF, Madai VI, Unterobderdörster M, et al. Outcome prediction in aneurysmal subarachnoid hemorrhage: a comparison of machine learning methods and established clinico-radiological scores. *Neurosurg Rev*. 2021;44(5):2837–2846. doi:10.1007/s10143-020-01453-6
22. de Jong G, Aquarius R, Sanaa B, et al. Prediction Models in Aneurysmal Subarachnoid Hemorrhage: forecasting Clinical Outcome With Artificial Intelligence. *Neurosurgery*. 2021;88(5):E427–e434. doi:10.1093/neuros/nyaa581
23. Yu D, Williams GW, Aguilar D, et al. Machine learning prediction of the adverse outcome for nontraumatic subarachnoid hemorrhage patients. *Ann Clin Translational Neurol*. 2020;7(11):2178–2185. doi:10.1002/acn3.51208
24. Williams G, Maroufy V, Rasmy L, et al. Vasopressor treatment and mortality following nontraumatic subarachnoid hemorrhage: a nationwide electronic health record analysis. *Neurosurg Focus*. 2020;48(5):E4. doi:10.3171/2020.2.FOCUS191002
25. de Toledo P, Rios PM, Ledezma A, Sanchis A, Alen JF, Lagares A. Predicting the outcome of patients with subarachnoid hemorrhage using machine learning techniques. *IEEE Transactions Information Tech Biomed*. 2009;13(5):794–801. doi:10.1109/TITB.2009.2020434
26. Rubbert C, Patil KR, Beseoglu K, et al. Prediction of outcome after aneurysmal subarachnoid haemorrhage using data from patient admission. *Eur Radiol*. 2018;28(12):4949–4958. doi:10.1007/s00330-018-5505-0
27. Chen T, Guestrin C XGBoost: a Scalable Tree Boosting System. Proceedings of the 22nd ACM SIGKDD International Conference on Knowledge Discovery and Data Mining; 2016; San Francisco, California, USA.
28. Ikram A, Javaid MA, Ortega-Gutierrez S, et al. Delayed Cerebral Ischemia after Subarachnoid Hemorrhage. *J Stroke Cerebrovascular Dis*. 2021;30(11):106064. doi:10.1016/j.jstrokecerebrovasdis.2021.106064
29. Dodd WS, Laurent D, Dumont AS, et al. Pathophysiology of Delayed Cerebral Ischemia After Subarachnoid Hemorrhage: a Review. *J Am Heart Assoc*. 2021;10(15):e021845. doi:10.1161/JAHA.121.021845
30. Norberg E, Odenstedt-Herges H, Rydenhag B, Oras J. Impact of Acute Cardiac Complications After Subarachnoid Hemorrhage on Long-Term Mortality and Cardiovascular Events. *Neurocrit Care*. 2018;29(3):404–412. doi:10.1007/s12028-018-0558-0
31. Zhang L, Zhang B, Qi S. Impact of echocardiographic wall motion abnormality and cardiac biomarker elevation on outcome after subarachnoid hemorrhage: a meta-analysis. *Neurosurg Rev*. 2020;43(1):59–68. doi:10.1007/s10143-018-0985-6
32. Li R, Yuan Q, Su Y, Chopp M, Yan T, Chen J. Immune response mediates the cardiac damage after subarachnoid hemorrhage. *Exp Neurol*. 2020;323:113093. doi:10.1016/j.expneurol.2019.113093
33. Neulen A, Molitor M, Kosterhon M, et al. Correlation of cardiac function and cerebral perfusion in a murine model of subarachnoid hemorrhage. *Sci Rep*. 2021;11(1):3317. doi:10.1038/s41598-021-82583-9
34. Schmidt JM, Crimmins M, Lantigua H, et al. Prolonged elevated heart rate is a risk factor for adverse cardiac events and poor outcome after subarachnoid hemorrhage. *Neurocrit Care*. 2014;20(3):390–398. doi:10.1007/s12028-013-9909-z
35. Badjatia N, Ryan A, Choi HA, et al. Relationship Between Nutrition Intake and Outcome After Subarachnoid Hemorrhage: results From the International Nutritional Survey. *J Intensive Care Med*. 2021;36(10):1141–1148. doi:10.1177/0885066620966957
36. McIntyre MK, Gandhi C, Dragonette J, et al. A comparison of frailty indices in predicting length of inpatient stay and discharge destination following angiogram-negative subarachnoid hemorrhage. *Br J Neurosurg*. 2020;1:1–6.
37. McIntyre MK, Gandhi C, Long A, et al. Age predicts outcomes better than frailty following aneurysmal subarachnoid hemorrhage: a retrospective cohort analysis. *Clin Neurol Neurosurg*. 2019;187:105558. doi:10.1016/j.clineuro.2019.105558
38. McGirt MJ, Woodworth GF, Ali M, Than KD, Tamargo RJ, Clatterbuck RE. Persistent perioperative hyperglycemia as an independent predictor of poor outcome after aneurysmal subarachnoid hemorrhage. *J Neurosurg*. 2007;107(6):1080–1085. doi:10.3171/JNS-07/12/1080
39. Krut ND, Biessels GJ, DeVries JH, et al. Hyperglycemia in aneurysmal subarachnoid hemorrhage: a potentially modifiable risk factor for poor outcome. *J Cerebral Blood Flow Metab*. 2010;30(9):1577–1587. doi:10.1038/jcbfm.2010.102
40. Bian L, Liu L, Wang C, et al. Hyperglycemia within day 14 of aneurysmal subarachnoid hemorrhage predicts 1-year mortality. *Clin Neurol Neurosurg*. 2013;115(7):959–964. doi:10.1016/j.clineuro.2012.09.026
41. Frontera JA, Provencio JJ, Sehba FA, et al. The Role of Platelet Activation and Inflammation in Early Brain Injury Following Subarachnoid Hemorrhage. *Neurocrit Care*. 2017;26(1):48–57. doi:10.1007/s12028-016-0292-4
42. Perez P, Lukasiewicz AC, Lenck S, Nizard R, Drouet L, Payen D. Platelet activation and aggregation after aneurysmal subarachnoid hemorrhage. *BMC Neurol*. 2018;18(1):57. doi:10.1186/s12883-018-1062-z

Neuropsychiatric Disease and Treatment

Dovepress

Publish your work in this journal

Neuropsychiatric Disease and Treatment is an international, peer-reviewed journal of clinical therapeutics and pharmacology focusing on concise rapid reporting of clinical or pre-clinical studies on a range of neuropsychiatric and neurological disorders. This journal is indexed on PubMed Central, the 'PsycINFO' database and CAS, and is the official journal of The International Neuropsychiatric Association (INA). The manuscript management system is completely online and includes a very quick and fair peer-review system, which is all easy to use. Visit <http://www.dovepress.com/testimonials.php> to read real quotes from published authors.

Submit your manuscript here: <https://www.dovepress.com/neuropsychiatric-disease-and-treatment-journal>