

# Fetal and Neonatal Modified Myocardial Performance Indices in Preeclamptic versus Normotensive Pregnancies: A Prospective Cohort Study

Anutsara Promket<sup>1</sup>  
 Chatuporn Duangkum<sup>1</sup>  
 Yuttapong Wongswadiwat<sup>2</sup>  
 Piyamas Saksiriwuttho<sup>1</sup>  
 Sukanya Chaiyarach<sup>1</sup>  
 Kiattisak Kongwattanakul<sup>1</sup>  
 Ratana Komwilaisak<sup>1</sup>  
 Pisake Lumbiganon<sup>1</sup>  
 Prapassara Sirikan<sup>3</sup>

<sup>1</sup>Department of Obstetrics and Gynecology, Faculty of Medicine, Khon Kaen University, Khon Kaen, Thailand;

<sup>2</sup>Department of Pediatrics, Faculty of Medicine, Khon Kaen University, Khon Kaen, Thailand; <sup>3</sup>Department of Epidemiology and Biostatistics, Faculty of Public Health, Khon Kaen University, Khon Kaen, Thailand

**Objective:** To compare fetal and neonatal cardiac functions in terms of global, systolic, and diastolic function between the preeclampsia and normotensive blood pressure of pregnancies.

**Methods:** A prospective cohort study was conducted at a university hospital in Northeast Thailand. Twenty-nine pregnancies diagnosed as preeclampsia with or without severe features were compared with 29 normotensive pregnancies. Global cardiac, systolic, and diastolic function were assessed at prenatal and postnatal periods, by a professionally trained obstetrician and pediatric cardiologist, respectively.

**Results:** The fetal left modified myocardium performance index (Mod-MPI) in preeclampsia and normotensive blood pressure were  $0.60 \pm 0.08$  and  $0.59 \pm 0.08$  ( $p$ -value=0.341), respectively, while fetal right Mod-MPI were  $0.57 \pm 0.16$  and  $0.54 \pm 0.21$  ( $p$ -value=0.861), respectively. There were no statistically significant differences in terms of fetal isovolumic contraction time (ICT), isovolumic relaxation time (IRT), ejection time (ET), aortic peak systolic velocity (Ao PSV), pulmonary artery peak systolic velocity (PA PSV), mitral valve (MV) E:A ratio, or tricuspid valve (TV) E:A ratios between the two groups. Neonatal mitral valve E peak systolic velocity (MV-E PV) in preeclamptic and normotensive blood pressure groups were significantly different at  $51.1 \pm 8.02$  cm/s and  $43.56 \pm 5.21$  cm/s ( $p$ -value=0.036), respectively, whereas neonatal left Mod-MPI, mitral valve A peak systolic velocity (MV-A PV), MV E:A ratio, and Ao PSV were not significantly different ( $p$ -value=0.436, 0.119, 0.379, and 0.709), respectively.

**Conclusion:** Neonatal MV-E PV of the preeclampsia group was significantly higher than the normotensive blood pressure group, while there were no statistically significant differences in terms of global cardiac and diastolic functions during the fetal period between two groups.

**Keywords:** fetal Mod-MPI, neonatal Mod-MPI, preeclampsia, normotensive

## Introduction

Recently, incidences of preeclampsia have been reported in 2–5% of all pregnancies.<sup>1</sup> Neonates born from women suffering with preeclampsia were found to have more complications, such as growth restrictions, preterm birth, birth asphyxia, neonatal seizure, and increased rate of neonatal intensive care unit (NICU) admission than births from normotensive women.<sup>2</sup> Impaired trophoblastic invasion of maternal spiral arteries increases vascular resistance in uteroplacental

Correspondence: Chatuporn Duangkum  
 Department of Obstetrics and Gynecology, Faculty of Medicine, Khon Kaen University, 123 Mittraphap Road, Muang District, Khon Kaen, 40002, Thailand  
 Tel +66 653241590  
 Email Chatudu@kku.ac.th

circulation and may affect fetal cardiac function by causing increased cardiac afterload.<sup>3</sup> Acute hypertensive events in the women may cause fetal myocardial injury, resulting in heart failure, pulmonary and systemic congestion, and cardiorespiratory insufficiency.<sup>4</sup> Consequently, long-term complications in this group might increase the risk of hypertension in the young, ischemic stroke, coronary heart disease, and thickening of the myocardial wall.<sup>1</sup>

Fetal and neonatal cardiac function assessment are composed of systolic, diastolic, and global function. Global cardiac function can be evaluated by the modified myocardium performance index (Mod-MPI), whereas diastolic function can be assessed by flow patterns through the mitral and tricuspid valves (mitral valve (MV) E:A ratio, tricuspid valve (TV) E:A ratios and isovolumic relaxation time (IRT)).<sup>5</sup> The Mod-MPI described by Hernandez-Andrade et al<sup>6</sup> as a Doppler index of combined systolic and diastolic function assessment can identify volume fluctuations of preload and afterload.<sup>5</sup> Previous studies differed as to whether preeclampsia affected fetal or neonatal cardiac functions.<sup>3,7,8</sup> Therefore, the primary objective was to compare fetal cardiac function in terms of Mod-MPI, systolic, and diastolic functions between the preeclampsia and normotensive blood pressure groups, while the secondary objective was to compare neonatal left side cardiac functions between the two groups.

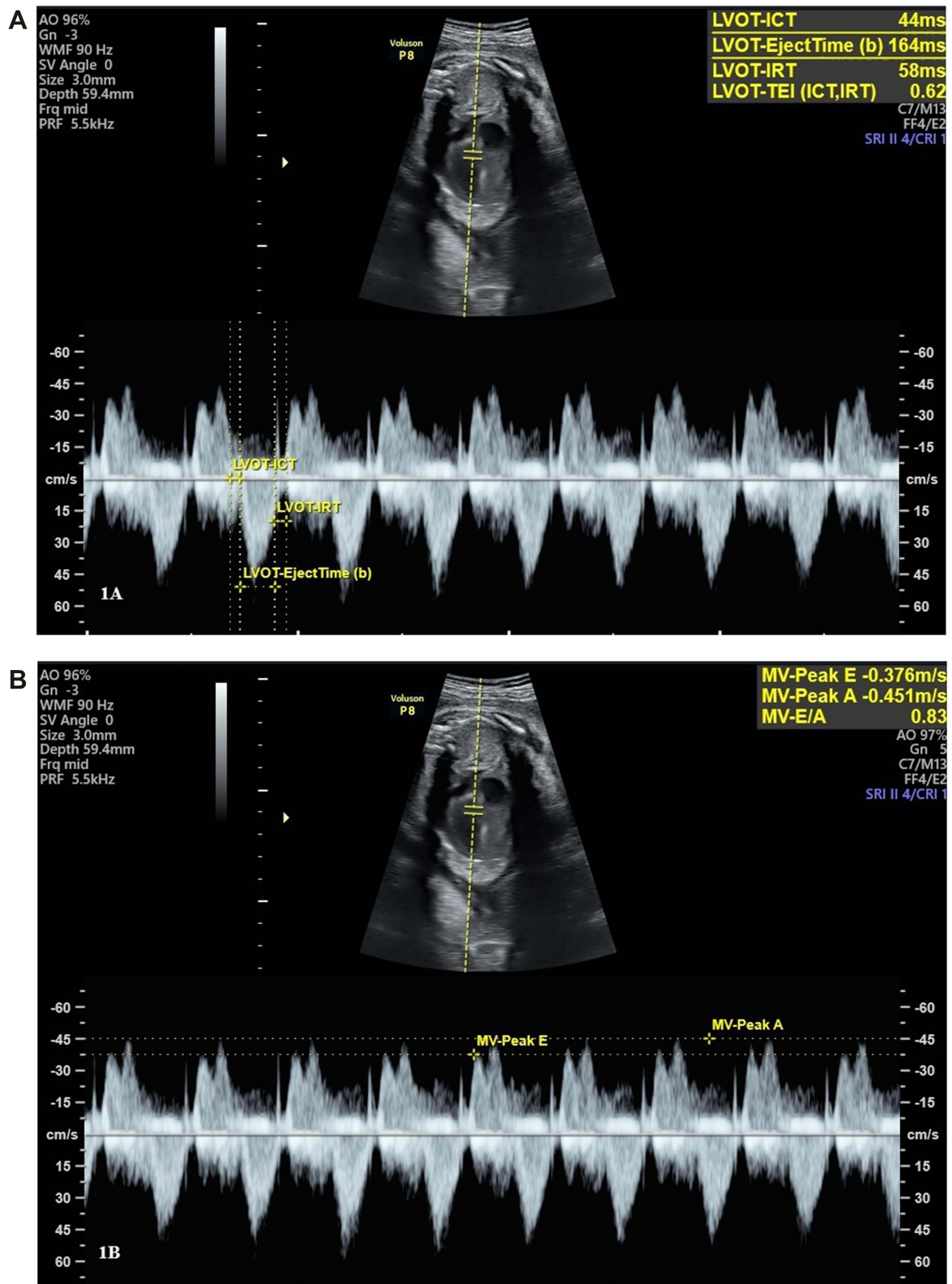
## Method

This prospective cohort study was conducted at Srinagarind Hospital, Khon Kaen University with approval by the KKU Ethics Committee in Human research (HE621565). Inclusion criteria were women who were healthy, 18 years old or older, singleton pregnancy with gestational age 24–40 weeks, and had preeclampsia based on ACOG 2019<sup>9</sup> as increased blood pressure  $\geq 140/90$  mmHg measured on two or more occasions at least 4 hours apart or blood pressure  $\geq 160/110$  mmHg confirmed within a few minutes, and the presence of significant proteinuria (total protein 300 mg or more per 24 hours urine collection or urine protein dipstick reading 2+ or urine protein: creatinine of 0.3 or more) or new onset thrombocytopenia, impaired liver function, renal insufficiency, pulmonary edema, and unexplained new onset headache unresponsive to medication or visual symptoms. Exclusion criteria included abnormal fetal karyotypes, abnormal fetal structures, abnormal amniotic fluid index (AFI), fetal congenital heart defects, fetal growth restriction (FGR), death of the fetus in utero (DFIU), and

receiving MgSO<sub>4</sub> or antihypertensive drugs before enrollment. Women with medical conditions such as anemia of any causes, diabetes mellitus, chronic hypertension, gestational hypertension, infection, heart disease, thyroid disease, central nervous system (CNS) disorders, lung disease, autoimmune disease, renal disease, and unstable hemodynamics were also excluded.

Sample size was calculated based on the primary objective to detect the 10% minimally clinical difference of mean fetal left Mod-MPI between preeclampsia and normotensive blood pressure groups with 90% power and  $\alpha=0.05$ . The required number of women in the study group was 25. With an expected dropout rate of 5%, 28 women were required per group.

The preeclamptic women were admitted to the labor room, and all eligible subjects provided informed consent before participating in the study. The control group were selected from normotensive blood pressure women, whose gestational age (GA) was compatible with cases. Since the preeclampsia with severe features was diagnosed after 34 weeks of gestation, all pregnancies were terminated. If the diagnosis was made before 34 weeks of gestation with reassured both mother and fetus, expectant management was offered. Before giving any medication in the preeclampsia group, all fetal biometric parameters, fetal heart rate (FHR), were evaluated and fetal echocardiography was performed by using a GE Voluson E8 (GE Medical Systems, Zipf, Austria), equipped with a transabdominal curvilinear transducer of frequency 2–5 MHz. The Mod-MPI was performed on a cross-sectional plane of fetal thorax at the level of four chambers view with an apical projection. The angle of insonation was adjusted to less than 30°. The Doppler velocity was set at 15 cm/s, with WMF of 90 Hz and lowest gain color and mechanical and thermal indices less than 1. A Doppler sample volume size of 3 mm was placed at the internal leaflet of the mitral valve or tricuspid valve, with the pulsed Doppler trace including the positive waveform (E and A waveform) and the negative waveform (aorta or pulmonary artery waveform). The isovolumic contraction time (ICT) was determined from the beginning of the mitral valve closure to the aortic valve opening, ejection time (ET) was measured at the period from the aortic valve opening to closure, and IRT was measured from the aortic valve closure to the mitral valve opening (Figure 1A). The Mod-MPI was estimated from  $(ICT+IRT)/ET$ .<sup>5</sup> For diastolic function assessment, the peak velocity of E and A waveforms, both left side heart (MV-E PV, MV-A PV) (Figure 1B) and



**Figure 1** (A) Measurement of ICT, IRT, and ET. (B) Measurement of MV-E PV and MV-A PV.

right-side heart (TV-E PV, TV-A PV), were measured. The sample gate was placed distal to the aortic or pulmonic valve and then the color Doppler was applied. Peak systolic velocity of the aorta (Ao PSV) and pulmonary artery (PA PSV) were measured. All parameters were measured in triplicate by a single sonographer and the mean of each value was determined.

At 2 days after delivery, all stable neonates were evaluated for vital signs, weight, and measured Mod-MPI using a GE Vivid E9, 12 MHz linear probe. After obtaining written informed consent from their parents, the neonates were laid on the bed with no movement. A linear probe was placed at the neonatal anterior chest wall for assessment. The Doppler sample volume was 2–4 mm, 200–400 Hz of wall filter, and Doppler beam at  $\leq 20^\circ$ . The mitral inflow velocity pattern was performed at the apical four chamber view, with the Doppler sample volume positioned at the tips of the mitral leaflets.<sup>10</sup> The Ao PSV was recorded from the Doppler sample volume placed just below the aortic valve. The left neonatal Mod-MPI was calculated using the same formula as the fetus. All parameters were measured in triplicate and mean values were recorded from both groups. All examinations were performed by one pediatric cardiologist to negate inter-observer variation.

## Statistical Analysis

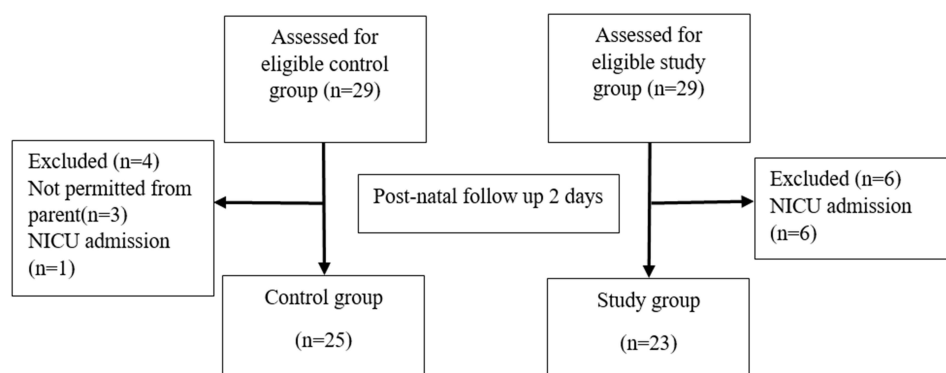
The characteristics of subjects were reported as frequency and percentage for categorical data and mean with standard deviation (SD) for continuous data. Independent *t*-test and *z*-test were used for testing the difference between normal blood pressure and preeclampsia groups. Comparing the cardiac functions was conducted by multiple linear regression, fetal Mod-MPI, confounding factors were adjusted by using GA, FHR, and estimated fetal weight, while neonatal

Mod-MPI was adjusted by using the neonatal heart rate. All statistical analyses were performed by using STATA software version 15 (StataCorp, College Station, TX).

## Results

This study was conducted at Srinagarind Hospital, Khon Kaen University, between April 2020 and January 2021. Twenty-nine pregnant women diagnosed with preeclampsia who met the inclusion criteria were enrolled into the study group and 29 pregnant women with normotensive blood pressure who met the inclusion criteria were enrolled as the control group. A flow chart showing enrollment of study participants is in Figure 2. Characteristics data are shown in Table 1. There were no differences in terms of maternal age, primigravida, GA, FHR, neonatal birth weight, neonatal heart rate, or oxygen saturation between the two groups, but mean arterial pressure (MAP) and pre-pregnancy BMI in the preeclampsia group were higher than the control group.

Fetal cardiac functions of both groups are shown in Table 2. The fetal left and right Mod-MPI were slightly higher in the preeclampsia group; however, this was not statistically significant. Thirteen fetuses (22%) from both groups had left Mod-MPI exceeding the 90th percentile of normal range. There were no statistically significant differences in fetal ICT, IRT, ET, MV E:A ratio, TV E:A ratio, Ao PSV, or PA PSV between the two groups. For subgroup analysis, 14 pregnancies (48.27%) were preeclampsia with severe features and 15 pregnancies (51.72%) were preeclampsia without severe features. The mean GA at diagnosis of preeclampsia with or without severe features were  $35.64 \pm 3.11$  and  $37.07 \pm 2.25$  weeks (*P*-value=0.095), respectively, while the MAP were  $122.85 \pm 7.96$  and  $107.43 \pm 5.90$  mmHg (*P*-value<0.001), respectively. The mean fetal left Mod-MPI



**Figure 2** Flow chart for the enrollment of study participants.

**Table 1** Data Characteristics

Characteristic	Normal Blood Pressure (n=29)	Preeclampsia (n=29)	P-value
Maternal age (years)	30.83±6.06	30.55±6.10	0.86
Primigravida (%)	13 (43.3)	15 (51.7)	0.52
Gestational age (weeks)	35.10±4.00	36.21±2.92	0.23
Mean arterial pressure (mmHg)	88.43±7.08	115.24±11.25	<0.001
Pre-pregnancy BMI (kg/m <sup>2</sup> )	27.99±5.17	30.17±4.75	0.10
Fetal heart rate (bpm)	141.47±9.26	143.07±8.73	0.50
Neonatal birth weight (grams)	2,919.96±504.20	2,735.36±826.47	0.32
Apgar score at 1st minute <7 (%)	1 (3.57)	6 (21.4)	0.04
Neonatal heart rate (bpm)	138.93±10.24	142.11±10.23	0.25
Neonatal oxygen saturation (%)	98.08±2.31	97.38±2.30	0.29

**Notes:** Data are represented as mean SD and frequency (percentage).

**Table 2** Comparison of Fetal Cardiac Function between Preeclampsia and Normotensive Blood Pressure Groups

Cardiac Function	Normal Blood Pressure (n=29)	Preeclampsia (n=29)	Mean Difference (95% CI)	P-value
Left side heart				
ICT (ms)	45.72±7.28	42.88±11.27	2.36 (−2.78–7.50)	0.361
IRT (ms)	47.85±7.27	49.16±12.57	1.90 (−3.70–7.50)	0.500
ET (ms)	158.16±13.45	154.39±33.50	4.61 (−9.15–18.38)	0.505
Mod-MPI	0.59±0.08	0.60±0.08	0.02 (−0.02–0.06)	0.341
MV-E PV (cm/s)	30.67±6.64	29.89±6.89	0.40 (−3.34–4.14)	0.833
MV-A PV (cm/s)	42.16±7.75	40.27±8.49	0.92 (−3.44–5.28)	0.674
MV E:A	0.73±0.09	0.74±0.06	0.01 (−0.03–0.05)	0.673
Ao PSV (cm/s)	66.02±12.05	71.01±22.21	6.53 (−3.03–16.09)	0.176
Right side heart				
ICT (ms)	42.98±14.69	44.89±11.92	0.27 (−6.91–7.45)	0.940
IRT (ms)	45.34±17.88	48.59±11.80	2.37 (−5.93–10.66)	0.569
ET (ms)	147.15±53.56	161.60±36.97	11.73 (−13.46–34.92)	0.378
Mod-MPI	0.54±0.21	0.57±0.16	0.01 (−0.09–0.11)	0.861
TV-E PV (cm/s)	32.22±10.15	30.05±13.25	1.55 (−4.75–7.85)	0.624
TV-A PV (cm/s)	44.81±12.99	40.12±15.49	3.71 (−3.93–11.35)	0.334
TV E:A	0.691±0.15	0.68±0.21	0.01 (−0.09–0.11)	0.846
PA PSV (cm/s)	60.99±11.52	62.64±18.79	3.06 (−5.30–11.41)	0.467

**Notes:** Data are represented in mean±SD and frequency with percentage. Mean difference adjusted by gestational age, fetal heart rate, and estimated fetal weight.

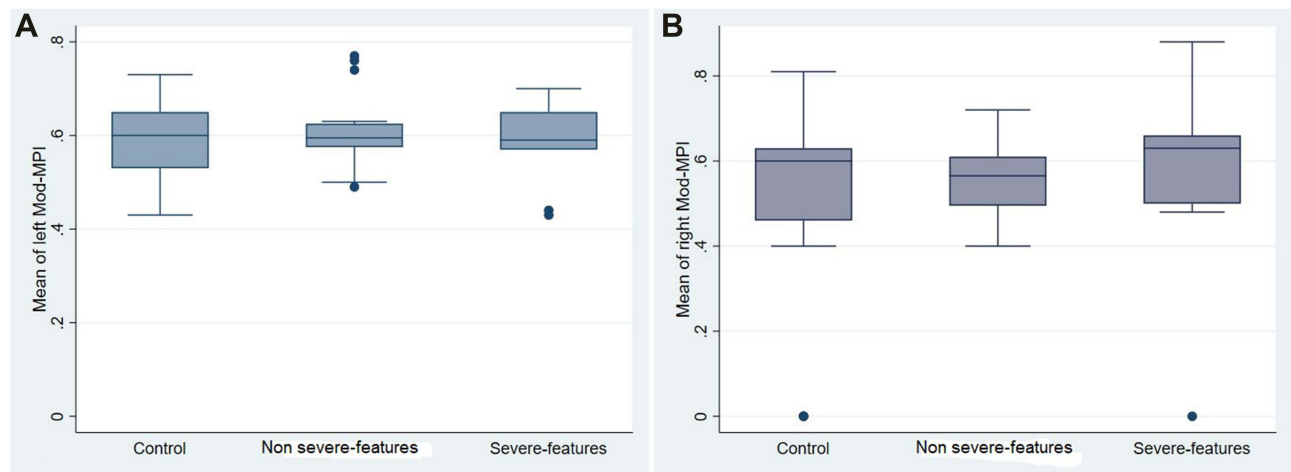
**Abbreviations:** ICT, isovolumetric contraction time; IRT, isovolumetric relaxation time; ET, ejection time; Mod-MPI, modified myocardial performance index; Ao PSV, aortic peak systolic velocity; MV-E PV, mitral valve E-wave peak velocity; MV-A PV, mitral valve A-wave peak velocity; MV E:A, mitral valve E:A wave ratio; TV-E PV, tricuspid valve E-wave peak velocity; TV-A PV, tricuspid valve A-wave peak velocity; TV E:A, tricuspid valve E:A wave ratio; PA PSV, pulmonary artery peak systolic velocity.

of preeclampsia with or without severe features groups were 0.58±0.09 and 0.60±0.07, respectively, with a mean difference of 0.02 (95% CI=−0.04–0.09) (Figure 3A). The mean fetal right Mod-MPI were 0.57±0.25 and 0.56±0.08, respectively, with a mean difference of 0.01 (95% CI=−0.18–0.21) (Figure 3B).

Forty-eight neonates underwent echocardiography while 10 did not. Among these, seven were admitted early in the NICU and three were not permitted by their parents. Mean neonatal heart rates in the preeclampsia and

normotensive blood pressure groups were 142.11±10.23 and 138.93±10.24 beats per minute (*P*-value=0.25), respectively. Table 3 shows the comparison of neonatal left side cardiac function between the two groups. The mean values of neonatal left Mod-MPI were 0.44±0.11 and 0.50±0.25 in the preeclamptic and normotensive blood pressure groups, (*P*-value=0.436), respectively, with a mean difference of 0.05 (95% CI=−0.09–0.21). Neonatal MV-E PV of preeclampsia and normotensive blood pressure groups were 51.10±8.02 cm/s and 43.56





**Figure 3** Box-plot of (A) fetal left Mod-MPI and (B) fetal right Mod-MPI in preeclampsia with or without severe features and the control groups.

$\pm 5.21$  cm/s, respectively, with a mean difference of 7.46 (95% CI=0.54–14.37;  $P$ -value=0.036). There were no statistically significant differences in terms of neonatal MV-A PV, MV E:A ratio, and Ao PSV between the two groups.

**Discussion**

This prospective cohort study demonstrated no statistically significant differences in fetal and neonatal Mod-MPI between the preeclampsia and normotensive blood pressure groups. Furthermore, subgroup analysis did not show statistically significant differences of left and right Mod-MPI between the preeclampsia with severe features or without severe features and control groups. The neonatal MV-E PV showed significantly higher in neonates of preeclamptic women than normotensive women. However, the neonatal MV E:A ratio was similar between the two groups. Our study is compatible with the studies of Api et al<sup>3</sup> and Lee et al.<sup>11</sup> In 2009, Api et al<sup>3</sup> reported that fetal Mod-MPI values were not different among preeclampsia with or without severe features and normal blood pressure groups. Lee et al<sup>11</sup> evaluated fetal Mod-MPI and cardiac output between pregnancies with complications including preeclampsia,

FGR, or preterm and normal blood pressure groups. They found no statistically significant differences in fetal Mod-MPI. In contrast to our study, Bhorat et al<sup>8</sup> determined fetal Mod-MPI in early onset preeclampsia without FGR and normal blood pressure groups. Their results showed a significant elevation of fetal Mod-MPI in the early onset preeclampsia without FGR group. For subgroup analysis, we demonstrated that type of preeclampsia may not affect fetal Mod-MPI. In our study, most preeclampsia cases were terminated immediately after diagnosis, therefore we did not demonstrate whether time of exposure acute hypertension affected fetal Mod-MPI.

In a healthy fetus, the E:A ratio is normally less than 1, but in the case of cardiac volume overload can invert the E:A ratio.<sup>5</sup> Our results showed no significant differences in fetal MV E:A ratio and TV E:A ratio. This finding was also supported by Api et al,<sup>3</sup> Balli et al,<sup>7</sup> and Lee et al.<sup>11</sup> Fetal cardiac systolic function can be evaluated by many parameters such as cardiac output, annular displacement, annular peak velocity, and strain rate<sup>5</sup> but the technique for assessment may be difficult to perform. We used the reproducible evaluation technique for both Ao PSV and

**Table 3** Comparison of Neonatal Left Side Cardiac Functions between Preeclampsia and Normotensive Blood Pressure Groups

Left Side Cardiac Function	Normal Blood Pressure (n=25)	Preeclampsia (n=23)	Mean Difference (95% CI)	P-value
Mod-MPI	0.50±0.25	0.44±0.11	0.05 (−0.09–0.21)	0.436
MV-E PV (cm/s)	43.56±5.21	51.10±8.02	7.46 (0.54–14.37)	0.036
MV-A PV (cm/sec)	55.88±8.43	65.80±12.66	7.89 (−2.21–18.00)	0.119
MV E:A ratio	0.78±0.08	0.80±0.08	0.03 (−0.04–0.10)	0.379
Ao PSV (cm/s)	86.89±12.58	83.19±18.29	2.64 (−11.82–17.09)	0.709

**Notes:** Data are represented as mean±SD and frequency percentage. Mean differences are adjusted by neonatal heart rate.

PA PSV to assess resistance in the upper and lower parts of the fetal body. Doppler measurement of flow through the outflow tracts reflects systolic function.<sup>5</sup> We found no significant differences in means of fetal Ao PSV and PA PSV between the two groups. All values in both groups were within the normal reference ranges.<sup>12</sup>

After delivery, cardiovascular system adaptation from the fetus to neonate occurs during the first week of life.<sup>13</sup> After umbilical cord clamping, all fetal shunts are closed, and neonatal systemic circulation starts. Neonatal cardiac compliance increases and can tolerate a marked increase of afterload volume.<sup>14</sup> In healthy neonates, Mod-MPI are influenced by preload and afterload but in cases of unstable hemodynamic or tachycardia, data were limited available.<sup>14</sup> Normal range neonatal Mod-MPI varies between 0.25 and 0.38.<sup>14–16</sup> Our study demonstrated no statistically significant differences in neonatal left Mod-MPI between the two groups. In contrast, Kardir<sup>15</sup> reported that neonatal left Mod-MPI values of mildly preeclamptic pregnancies were significantly higher than newborns of normotensive pregnancies at 24–48 hours post-delivery. For diastolic adaptation, both E wave and E:A ratio progressively rose during the first week of life and MV E:A ratio was usually more than 1. The E waveform is more sensitive to neonatal preload change.<sup>14</sup> Our study showed that preeclampsia might affect neonatal preload because we found significant higher E waves in neonates of maternal preeclampsia than normotensive blood pressure groups ( $P$ -value=0.036). Although our neonatal E wave was high in the maternal preeclampsia group, there were no statistically significant differences in MV E:A ratio between the two groups. This could be explained because all cases of preeclampsia could be compensated by the changeable neonatal preload and early terminated of pregnancy after diagnosis so the MV E:A ratio was still unchangeable. We suggested early termination of preeclampsia might prevent neonatal Mod-MPI and MV E:A ratio deterioration. All neonatal Ao PSV values of both groups were within the normal reference range.<sup>17</sup>

An additional finding, we found 22% of fetuses from both groups had left mod-MPI, ICT, and IRT of exceedingly more than the 90th percentile, while ET, E, and A wave were within the normal reference range. All fetuses were delivered by emergency cesarean section due to fetal non-reassuring status. Moreover, we also observed a slightly higher neonatal left Mod-MPI in

these groups compared to the reference range. Although neonatal left Mod-MPI was higher, no additional support was required for them. This could be explained that prolong of left Mod-MPI, IRT and ICT became the early signs cardiac dysfunction reflecting an increase in the time required to relax the myocardium<sup>5</sup> so fetal non-reassuring from hypoxemia state might affect of these values. If the higher Mod-MPI was diagnosed in utero, the obstetrician should consult a pediatric cardiologist for further neonatal evaluation and follow-up.

To the best of our knowledge, this is the first prospective study to evaluate fetal and neonatal Mod-MPI from the fetus in utero through the newborn period. However, this study did not investigate the duration of exposure hypertension that may affect fetal cardiac remodeling. Neonatal right Mod-MPI was not provided because of the difficulty in placing a Doppler sample gate between the long-distance tricuspid and pulmonary valves. A follow-up longitudinal echocardiography study is recommended to investigate the significantly high MV-E PV in neonates born from preeclamptic mothers.

## Conclusion

No statistically significant differences were recorded for fetal global cardiac function, systolic, and diastolic function between the preeclampsia and normal blood pressure groups. Subgroup analyses of fetal left Mod-MPI between the preeclampsia with or without severe features were also not significantly different. Neonatal MV-E PV of the preeclampsia group was significantly higher than the normotensive group, whereas the Mod-MPI, MV E:A ratio were not different.

## Details of Ethics Approval

Ethical approvals were obtained from Khon Kaen University Ethics Committee for Human Research based on the Declaration of Helsinki and the ICH Good clinical Practice Guidelines (April 7, 2020, Reference No. HE621565).

## Acknowledgments

We would like to thank the research team, MFM unit, Khon Kaen University without whom this study would not have been possible.

## Disclosure

The authors have no conflicts of interest for this work to report.

## References

1. Timpka S, Macdonald-Wallis C, Hughes AD, et al. Hypertensive disorders of pregnancy and offspring cardiac structure and function in adolescence. *J Am Heart Assoc*. 2016;5(11):e003906. doi:10.1161/JAHA.116.003906
2. Hutcheon JA, Lisonkova S, Joseph KS. Epidemiology of pre-eclampsia and the other hypertensive disorders of pregnancy. *Best Pract Res Clin Obstet Gynaecol*. 2011;25(4):391–403. doi:10.1016/j.bpobgyn.2011.01.006
3. Api O, Emeksiz MB, Api M, Ugurel V, Unal O. Modified myocardial performance index for evaluation of fetal cardiac function in pre-eclampsia. *Ultrasound Obstet Gynecol*. 2009;33(1):51–57. doi:10.1002/uog.6272
4. Murase M, Ishida A, Morisawa T. Left and right ventricular myocardial performance index (Tei index) in very-low-birth-weight infants. *Pediatr Cardiol*. 2009;30(7):928–935. doi:10.1007/s00246-009-9464-8
5. Crispi F, Gratacós E. Fetal cardiac function: technical considerations and potential research and clinical applications. *Fetal Diagn Ther*. 2012;32(1–2):47–64. doi:10.1159/000338003
6. Hernandez-Andrade E, Figueroa-Diesel H, Kottman C, et al. Gestational-age-adjusted reference values for the modified myocardial performance index for evaluation of fetal left cardiac function. *Ultrasound Obstet Gynecol*. 2007;29(3):321–325. doi:10.1002/uog.3947
7. Balli S, Kibar AE, Ece I, Oflaz MB, Yilmaz O. Assessment of fetal cardiac function in mild preeclampsia. *Pediatr Cardiol*. 2013;34(7):1674–1679. doi:10.1007/s00246-013-0702-8
8. Bhorat IE, Bagratee JS, Reddy T. Assessment of fetal myocardial performance in severe early onset pre-eclampsia (EO-PET) with and without intrauterine growth restriction across deteriorating stages of placental vascular resistance and links to adverse outcomes. *Eur J Obstet Gynecol Reprod Biol*. 2017;210:325–333. doi:10.1016/j.ejogrb.2017.01.014
9. American College of Obstetricians and Gynecologists. ACOG practice bulletin no. 202: gestational hypertension and preeclampsia. *Obstet Gynecol*. 2019;133(1):1.
10. Tsutsumi T, Ishii M, Eto G, Hota M, Kato H. Serial evaluation for myocardial performance in fetuses and neonates using a new Doppler index. *Pediatr Int*. 1999;41(6):722–727. doi:10.1046/j.1442-200x.1999.01155.x
11. Lee JY, Kim YL, Jeong JE, Ahn JW. Prediction of pregnancy complication occurrence using fetal cardiac output assessments made by ultrasonography at 20 to 24 weeks of gestation. *Obstet Gynecol Sci*. 2017;60(4):336–342. doi:10.5468/ogs.2017.60.4.336
12. Parasuraman R, Osmond C, Howe DT. Gestation-specific reference intervals for right and left ventricular ejection force from 12 to 40 weeks of gestation. *J Obstet Gynaecol Res*. 2012;38(1):160–164. doi:10.1111/j.1447-0756.2011.01660.x
13. Bokiniec R, Wlasienko P, Borszewska-Kornacka MK, Madajczak D, Szymkiewicz-Dangel J. Myocardial performance index (Tei index) in term and preterm neonates during the neonatal period. *Kardiol Pol*. 2016;74(9):1002–1009. doi:10.5603/KP.a2016.0056
14. Mertens L, Seri I, Marek J, et al. Targeted neonatal echocardiography in the neonatal intensive care unit: practice guidelines and recommendations for training: writing group of the American Society of Echocardiography (ASE) in collaboration with the European Association of Echocardiography (EAE) and the Association for European Pediatric Cardiologists (AEPC). *J Am Soc Echocardiogr*. 2011;24(10):1057–1078. doi:10.1016/j.echo.2011.07.014
15. Mutlu K, Karadas U, Yozgat Y, et al. Echocardiographic evaluation of cardiac functions in newborns of mildly preeclamptic pregnant women within postnatal 24–48 hours. *J Obstet Gynaecol*. 2018;38(1):16–21. doi:10.1080/01443615.2017.1322564
16. Bokiniec R, Wlasienko P, Szymkiewicz-Dangel J, Borszewska-Kornacka MK. Echocardiographic analysis of left ventricular function in term and preterm neonates at week 40 of postconceptional life. *Kardiol Pol*. 2019;77(4):445–450. doi:10.5603/KP.a2019.0040
17. Pees C, Glagau E, Hauser J, Michel-Behnke I. Reference values of aortic flow velocity integral in 1193 healthy infants, children, and adolescents to quickly estimate cardiac stroke volume. *Pediatr Cardiol*. 2013;34(5):1194–1200. doi:10.1007/s00246-012-0628-6

International Journal of Women's Health

Dovepress

### Publish your work in this journal

The International Journal of Women's Health is an international, peer-reviewed open-access journal publishing original research, reports, editorials, reviews and commentaries on all aspects of women's healthcare including gynecology, obstetrics, and breast cancer. The

manuscript management system is completely online and includes a very quick and fair peer-review system, which is all easy to use. Visit <http://www.dovepress.com/testimonials.php> to read real quotes from published authors.

Submit your manuscript here: <https://www.dovepress.com/international-journal-of-womens-health-journal>