

Impact of Radical Nephrectomy and Partial Nephrectomy on Actual Estimated Overall Survival Compared to Life Expectancy in Patients with Renal Cell Carcinoma

This article was published in the following Dove Press journal:
Research and Reports in Urology

Shunta Hori 
Nobumichi Tanaka 
Kota Iida
Yasushi Nakai
Makito Miyake 
Satoshi Anai
Kazumasa Torimoto 
Kiyohide Fujimoto

Department of Urology, Nara Medical University, Kashihara, Nara, 634-8522, Japan

Purpose: Reports suggest that partial nephrectomy provides no significant benefit in terms of cancer-specific and overall survival (OS) compared to radical nephrectomy. Here, we focused on survival in terms of life expectancy and investigated the significance of partial nephrectomy for localized renal cell carcinoma (RCC) patients.

Patients and Methods: Our retrospective study included 937 patients (median age 63 years) with localized RCC who underwent partial nephrectomy or radical nephrectomy. Various predictive factors were explored, and the association between actual OS and life expectancy was analyzed.

Results: Performance status (PS) ≥ 1 and tumor size ≥ 40 mm were identified as independent poor prognostic factors for cancer-specific survival. Age ≥ 60 , male sex, PS ≥ 1 , C-reactive protein elevation, pT1b stage, and radical nephrectomy were identified as independent poor prognostic factors for OS. OS and life expectancy did not differ in the partial nephrectomy group ($P=0.11$). OS was significantly shorter than life expectancy in the radical nephrectomy group ($P<0.0001$). In PS0 or pT1a patients, there was a significant difference between actual OS and life expectancy in the radical nephrectomy group ($P<0.0001$), but not in the partial nephrectomy group ($P=0.15$). In patients with a life expectancy ≥ 10 years, PS0, and pTa, OS and life expectancy differed in the radical nephrectomy group, but not in the partial nephrectomy group.

Conclusion: Partial nephrectomy can improve actual OS, and notably, PS and tumor size are crucial factors that determine the choice of surgical procedure. Further research is needed to establish appropriate treatment strategies and criteria for clinical practice.

Keywords: life expectancy, nephrectomy, performance status, renal cell carcinoma, tumor size

Introduction

Globally, renal cell carcinoma (RCC) accounts for approximately 3% of all cancers. By 2026, RCC is estimated to be the sixth and ninth most common cancer type in men and women, respectively.¹ Recently, advancements in drug treatment, including immune-checkpoint inhibitors, have expanded treatment options, while surgical treatments, including partial nephrectomy (PN) and radical nephrectomy (RN), remain the gold standards for localized RCC. Improved surgical techniques, including robotic surgery, have enabled the treatment of challenging PN. Therefore, it

Correspondence: Nobumichi Tanaka
Department of Urology, Nara Medical University, 840 Shijo-cho, Kashihara, Nara, 634-8522, Japan
Tel +81-744-22-3051
Fax +81-744-22-9282
Email sendo@naramed-u.ac.jp

may be possible to improve overall survival (OS) in RCC patients by making full use of advanced treatments.

In an analysis of 2459 patients with cT1 RCC, RN was associated with an increased risk of chronic kidney disease (CKD) compared to PN, whereas RN was not associated with increased risk of cancer-specific survival (CSS) or OS.² An analysis from Italy showed no significant difference in metastasis-free survival, local recurrence-free survival, CSS, and OS between PN and RN patients.³ On the contrary, another report suggested that patients over 65 years who undergo PN have longer OS than those who undergo RN.⁴ In terms of surgical complications, the European Organization for the Research and Treatment of Cancer (EORTC) showed that PN was associated with slightly higher complication rates compared to RN, while PN was found to be an acceptable treatment for patients with small RCC.⁵ Although PN is expected to be associated with survival advantages, including prevention of CKD and cardiovascular disease, many studies have suggested that there are no statistical differences in CSS and OS between patients who underwent PN and RN.^{6–9} However, PN is recommended for patients with cT1 RCC and this is because surgeons believe in the potential survival benefits of PN. In a previous study that explored which patients would benefit from PN, patients with CKD stage-II demonstrated a decreased risk of developing significant renal impairment.¹⁰ Therefore, PN should be recommended to patients with poor renal function.

In the present study, we explored independent factors for CSS and OS, focusing on the association between OS and life expectancy calculated by an abridged life table published by the Ministry of Health, Labour and Welfare in Japan. Comparison of life expectancy may lead to novel findings and formulation of optimal strategies for RCC patients.

Patients and Methods

Ethics Approval and Consent to Participate

This study was conducted in compliance with the study's protocol and following the provisions of the Declaration of Helsinki (2013) and was approved by the research ethics committee of Nara Medical University (project identification code: 685–4). The requirement for informed patient consent was waived because of the retrospective nature of

the analysis. Personal information linked to research subjects and donors was anonymized (when necessary, the information was labeled with an identifying code to make it possible to distinguish between the individuals). Then, deidentified patient data were analyzed.

Patient Selection and Data Collection

The present study included 937 consecutive patients with localized RCC (pT1-2pN0cM0pV0) seen between the years 1980 and 2008, at our institute. We retrospectively reviewed medical charts and obtained clinical, pathological, and laboratory data of these patients.

Life Expectancy Calculation

Life expectancy was calculated according to an abridged life table published by the Ministry of Health, Labour and Welfare in Japan ([Table S1](#)). The date of birth of patients was obtained for calculating the life expectancy of each patient. This value was used for analysis in this study; however, if life expectancy was shorter than the actual OS, the latter was used.

Statistical Analysis

Statistical analyses were performed and figures were constructed using GraphPad Prism 7.0 (GraphPad Software, Inc., San Diego, CA, USA). The Student's *t*-test or the Mann–Whitney *U*-test was applied for statistical analysis, as appropriate. The age cut-off was determined using a receiver-operating characteristic (ROC) curve analysis. A survival curve was obtained using the Kaplan–Meier method and compared using the Log-rank test. A multivariate Cox proportional hazards regression analysis was carried out using Statistical Package for the Social Sciences, version 21 (SPSS Inc., Chicago, IL, USA). Two-sided tests were used in all cases and a *P* value <0.05 was considered statistically significant.

Results

Patient Characteristics

[Table 1](#) shows the clinicopathological characteristics of the cohort. The median age at surgery was 63 years (interquartile range [IQR] 54–70) and there were 646 men (68.9%) and 291 women (31.1%). Of 937 patients, 248 patients (26.5%) were diagnosed with RCC incidentally and 873 patients were categorized as performance status (PS) 0 according to the Eastern Cooperative Oncology Group. Preoperatively, 36 patients (3.8%) had fever at

Table 1 Clinicopathological Information of Patients with Renal Cell Carcinoma

Variables		Number of Patients	%
Total		937	100
Age at operation	Median (IQR)	63 (54–70)	–
Sex	Male	646	68.9
	Female	291	31.1
Diagnostic opportunity	Symptomatic	689	73.5
	Incidental	248	26.5
Performance status	0	873	93.2
	1	43	4.6
	2	12	1.3
	3	6	0.6
	4	3	0.3
Follow-up period	Median (IQR)	95 (38–150)	–
Preoperative fever up	Negative	901	96.2
	Positive	36	3.8
Preoperative CRP	Negative	820	87.5
	Positive	117	12.5
Side	Right	475	50.7
	Left	456	48.7
	Bilateral	6	0.6
Tumor size (mm)	Median (IQR)	39.5 (25–51)	–
Pathological T category	Ia	557	59.4
	Ib	292	31.2
	2	88	9.4
Clear cell	No	225	24
	Yes	712	76
Grade	G1	203	21.7
	G2	620	66.2
	G3	46	4.9
	Unknown	68	7.2
Operation	RN	780	83.2
	PN	157	16.8

(Continued)

Table 1 (Continued).

Variables		Number of Patients	%
Die of RCC	No	892	95.2
	Yes	45	4.8
All cause death	No	615	65.6
	Yes	322	34.4

Abbreviations: IQR, interquartile range; CRP, C-reactive protein; RN, radical nephrectomy; PN, partial nephrectomy; RCC, renal cell carcinoma.

diagnosis and C-reactive protein (CRP) levels were increased in 117 patients (12.5%). The median tumor size was 39.5 mm (IQR, 25.0–51.0), and according to pT category, pT1a, pT1b, and pT2 occurred in 557 (59.4%), 292 (31.2%), and 88 (9.4%) patients, respectively. With regard to histological type, 712 patients (76.0%) were diagnosed with clear cell type. Of 937 patients, 45 patients (4.8%) died of RCC and 615 patients (34.4%) died of other causes during the median 95 months (IQR 38–150) of follow-up.

Prognostic Factors for CSS and OS

Prognostic factors for CSS and OS were explored and a cut-off value for age (patients aged <60 or ≥60) was determined by ROC curve analysis. In the univariate analysis for CSS (Table 2), age ≥60, symptomatic disease, PS ≥1, fever, CRP elevation, tumor size ≥40 mm, and RN were identified as potential poor prognostic factors for CSS after RN or PN. In the multivariate analysis, PS ≥1 and tumor size ≥40 mm were identified as independent poor prognostic factors for CSS after RN or PN (PS ≥1: hazard ratio [HR] 3.31, 95% confidence interval [CI] 1.45–7.59; pT1b: HR 2.63, 95% CI 1.28–5.40; and pT2: HR 3.17, 95% CI 1.28–7.84, respectively). As for OS, in the univariate analysis (Table 2), age ≥60, male sex, PS ≥1, fever, CRP elevation, pT1b, and RN were identified as potential poor prognostic factors for OS after RN or PN. Multivariate analysis revealed that age ≥60, male sex, PS ≥1, CRP elevation, pT1b, and RN were independent poor prognostic factors for OS after RN or PN (age ≥60: HR 1.90, 95% CI 1.49–2.41; male sex: HR 1.45, 95% CI 1.13–1.85; PS ≥1: HR 2.44, 95% CI 1.72–3.48; CRP elevation: HR 1.89, 95% CI 1.37–2.63; pT1b: HR 1.32, 95% CI 1.03–1.68; and RN: HR 1.57, 95% CI 1.10–2.25).

Table 2 Cox Regression Analysis of Predictive Factors

Variables		Cancer-Specific Survival						Overall Survival					
		Univariate Analysis			Multivariate Analysis			Univariate Analysis			Multivariate Analysis		
		HR	95% CI	P value	HR	95% CI	P value	HR	95% CI	P value	HR	95% CI	P value
Age	<60	1			1			1			1		
	≥60	1.83	1.01–3.30	0.046	1.89	0.98–3.54	0.057	1.64	0.85–2.43	<0.0001	1.9	1.49–2.41	<0.0001
Sex	Female	1						1			1		
	Male	1.19	0.67–2.14	0.55				1.08	0.30–1.87	0.04	1.45	1.13–1.85	0.004
Diagnostic opportunity	Incidental	1			1			1					
	Symptomatic	2.38	1.23–4.59	0.016	1.42	0.75–2.67	0.28	1.12	0.34–1.90	0.74			
Performance status	0	1			1			1			1		
	1–3	11.8	2.94–47.38	0.0005	3.31	1.45–7.59	0.005	2.01	1.30–2.72	<0.0001	2.44	1.72–3.48	<0.0001
Fever up	No	1			1			1			1		
	Yes	12.27	2.36–63.85	0.0029	1.45	0.45–4.75	0.54	1.52	0.88–2.17	0.0007	1.15	0.69–1.93	0.59
CRP	Negative	1			1			1			1		
	Positive	4.05	1.52–10.82	0.0052	1.49	0.61–3.61	0.38	1.56	0.80–2.31	<0.0001	1.89	1.37–2.63	<0.0001
Side	Right	1						1					
	Left	0.78	0.43–1.39	0.39				1.13	0.33–1.93	0.96			
Histological type	Non-clear cell	1						1					
	Clear cell	1.59	0.80–3.16	0.18				1.12	0.35–1.89	0.8			
Pathological T category	Ia	1			1			1			1		
	Ib	3.61	1.83–7.13	<0.0001	2.63	1.28–5.40	0.008	1.49	1.18–1.89	0.001	1.32	1.03–1.68	0.028
	2	4.94	2.11–11.59	<0.0001	3.17	1.28–7.84	0.013	1.38	0.95–2.02	0.093	1.1	0.75–1.63	0.63
Type of surgery	PN	1			1			1			1		
	RN	2.59	1.23–5.45	0.012	2.59	0.59–11.32	0.21	1.62	1.25–2.14	0.0007	1.57	1.10–2.25	0.013

Abbreviations: HR, hazard ratio; CI, confidence interval; CRP, C-reactive protein; PN, partial nephrectomy; RN, radical nephrectomy.

Table 3 Comparison of Patient's Characteristics Between RN Group and PN Group

Variables		Treatment		P value
		RN (n=780)	PN (n=157)	
Age at operation		63 (54.8–70)	62 (53–71)	0.78 [†]
Sex	Man	524	122	0.011 [‡]
	Woman	256	35	
Diagnostic opportunity	Symptomatic	554	137	<0.0001 [‡]
	Incidental	226	20	
Performance status	0	720	153	
	≥1	60	4	
Follow-up period (month)	Median (IQR)	89 (35–143)	121 (53–169)	0.0036 [†]
Life expectancy period (month)	Median (IQR)	250 (178–340)	245 (170–353)	0.76 [†]
Preoperative fever up	No	745	156	0.020 [‡]
	Yes	35	1	
Preoperative CRP	Negative	669	151	<0.0001 [‡]
	Positive	111	6	
Side	Right	404	71	0.19 [‡]
	Left	373	83	
	Bilateral	3	3	
Tumor size (mm)	Median (IQR)	40 (30–57)	22 (18–30)	<0.0001 [†]
Pathological T category	1a	411	146	<0.0001 [‡]
	1b	282	10	
	2	87	1	
Clear cell	No	185	40	0.83 [‡]
	Yes	595	117	
Grade	G1	170	33	0.72 [‡]
	G2	512	108	
	G3	40	6	
	Unknown	58	10	

Notes: [†]Mann–Whitney U-test; [‡]Chi-square test or Fisher's exact test.

Abbreviations: RN, radical nephrectomy; PN, partial nephrectomy; IQR, interquartile range; CRP, C-reactive protein.

Notably, the type of nephrectomy was not significantly associated with CSS but was associated with OS. Patients who underwent RN for RCC \leq pT2N0M0 had a higher risk of mortality compared to those who underwent PN.

Comparison Between PN and RN Patients

We compared 157 patients who underwent PN with 780 patients who underwent RN. Table 3 shows the comparison of clinicopathological characteristics. The median

tumor size was significantly smaller in the PN (22.0 mm [IQR, 18.0–30.0] vs 40.0 mm [IQR, 30.0–57.0]) ($P<0.0001$). There were significantly more patients with fever and CRP elevation at diagnosis in the RN ($P=0.020$ and $P<0.0001$, respectively).

Comparison of Actual Survival with Life Expectancy in the PN and RN Group

CSS was significantly longer in patients who underwent PN. The actual CSS was significantly longer than the life expectancy in both groups (Figure 1A; $P<0.0001$ and Figure 1B; $P<0.0001$, respectively), indicating that the control of RCC after surgery was acceptable. On the other hand, there was no significant difference between actual OS and life expectancy in the PN group (Figure 1C; $P=0.11$), whereas actual OS was significantly shorter than life expectancy in the RN group (Figure 1D; $P<0.0001$). In patients with PS0, actual OS and life expectancy did not differ in the PN group (Figure 1E; $P=0.15$), while there was a significant difference between actual OS and life expectancy in the RN group (Figure 1F; $P<0.0001$). In patients with T1a tumors, actual OS and life expectancy did not differ in the PN group (Figure 1G; $P=0.28$), whereas there was a significant difference between actual OS and life expectancy in the RN group (Figure 1H; $P<0.0001$).

Subgroup Analysis of OS According to Remaining Life Expectancy

In patients with life expectancy <10 years, there was a significant difference between actual OS and life expectancy in both groups (Figure 2A; $P=0.033$ and Figure 2B; $P=0.031$, respectively). When the analysis was limited to patients with life expectancy <10 years and PS0, there was a significant difference between actual OS and life expectancy in both groups (Figure 2C; $P=0.033$ and Figure 2D; $P=0.0043$, respectively). On the other hand, in patients with life expectancy ≥ 10 years, their actual OS and life expectancy differed significantly in both groups (Figure 2E; $P=0.036$ and Figure 2F; $P<0.0001$), whereas when the analysis was limited to patients with life expectancy ≥ 10 years and PS0, there was no significant difference between OS and life expectancy in the PN group (Figure 2G; $P=0.053$), while there was a significant difference between OS and life expectancy in the RN group (Figure 2H; $P<0.0001$). These results suggest that PN should be selected regardless of whether life expectancy is under or

over 10 years. Furthermore, with regards to the association of tumor size, in patients with life expectancy ≥ 10 years and pT1a, there was no significant difference between OS and life expectancy in the PN group, but there was a significant difference in the RN group (Figure 3A; $P=0.12$ and Figure 3B; $P<0.0001$, respectively). On the contrary, in patients with life expectancy ≥ 10 years and pT1b/2, there was a significant difference between actual OS and life expectancy in both groups (Figure 3C; $P=0.030$ and Figure 3D; $P<0.0001$, respectively).

Discussion

The present study shows that PS and pT stage were associated with CSS and an age of ≥ 60 years, male sex, PS ≥ 1 , CRP elevation, pT1b, and RN were independent predictive factors for OS. In terms of life expectancy, patients who underwent RN had a high rate of mortality, but those who underwent PN had similar mortality compared to life expectancy. PN in patients with PS0 or pT1a showed OS advantages, therefore PN should be recommended for patients with life expectancy <10 years. Moreover, in such patients with life expectancy ≥ 10 years, RN should be avoided because of a potential decrease in life expectancy.

The present study, which comprised a cohort of patients with pT1-2 RCC treated over three decades, suggested that PN might have an important role in improving actual OS, and notably, PS, tumor size, and life expectancy are crucial factors to consider when choosing surgical procedures.

Despite advancements in surgical tools and techniques, it remains difficult to eliminate surgical complications completely, and the EORTC reported that the risk of surgical complications in PN was higher than in RN.⁵ However, the preservation of remnant renal function (RRF) after PN is reported to be superior to that of RN, leading urologists to pose the question whether patients who undergo PN have a low risk of mortality.^{7,10} Contrary to logical expectations, many papers suggest no significant difference in OS between PN and RN.^{2,3,6,8,9} Moreover, although PN substantially reduces the incidence of eGFR <60 , the incidence of eGFR <30 was similar in both PN and RN, and the incidence of eGFR <15 was nearly identical and therefore the advantage of PN in RRF did not contribute to improved survival.¹¹ In this study, although PN patients had a low risk of mortality, the underlying reason is unclear. Renal function or comorbidities were not analyzed because of lack of data, but we

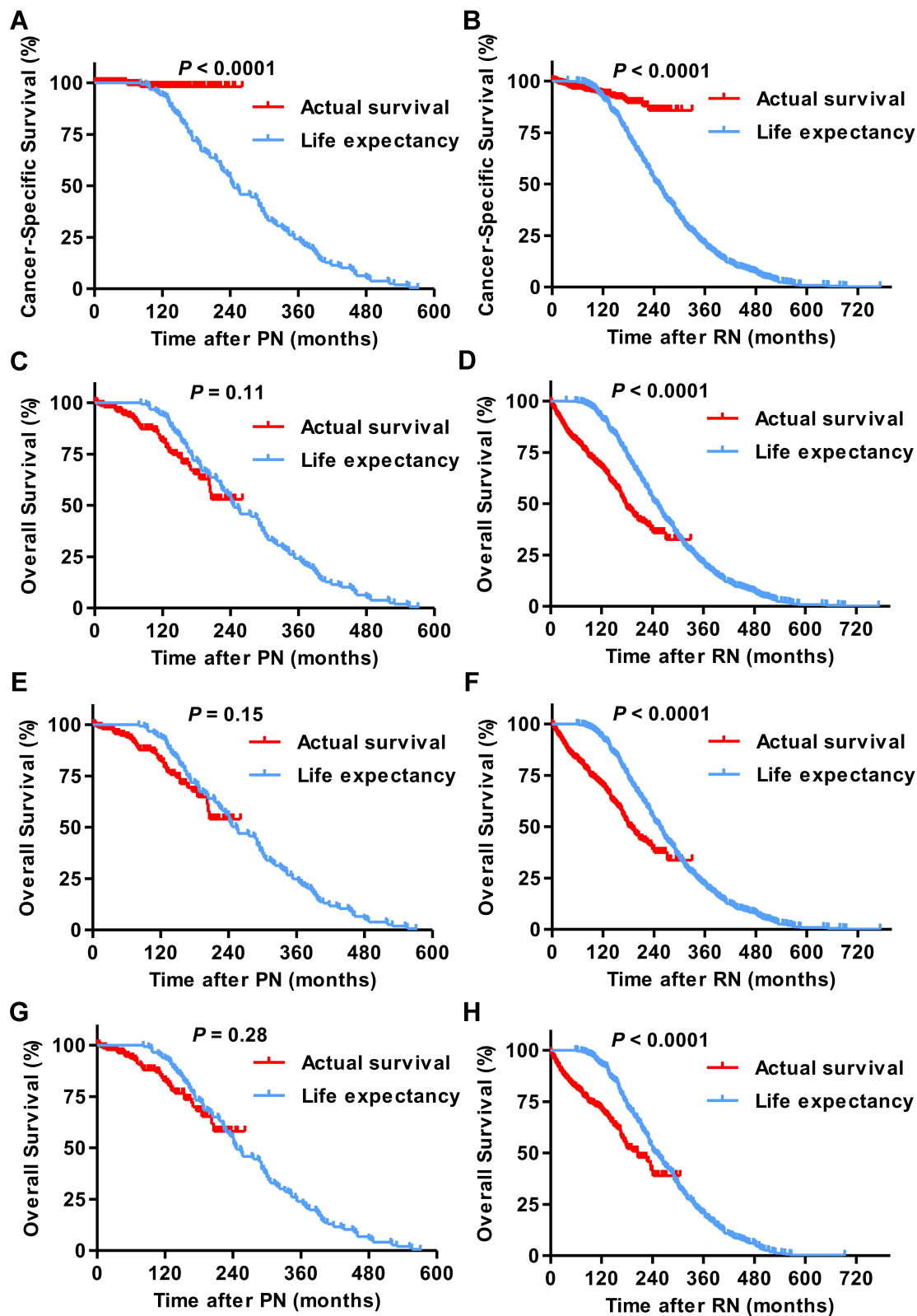


Figure 1 Comparison of actual overall survival with life expectancy in patients who underwent partial or radical nephrectomy. Actual overall survival (OS) and life expectancy are compared in the partial nephrectomy (PN) group and radical nephrectomy (RN) group. First, actual cancer-specific survival (CSS) is significantly increased in patients who underwent PN and RN ((A) $P < 0.0001$ and (B) $P < 0.0001$, respectively). On the contrary, actual OS in patients who underwent PN does not differ significantly from life expectancy, while RN is associated with a significantly higher risk of mortality before life expectancy ((C) $P = 0.11$ and (D) $P < 0.0001$, respectively). In patients with performance status 0, there is no significant difference between actual OS and life expectancy in the PN group, but there is a significant difference in the RN group ((E) $P = 0.15$ and (F) $P < 0.0001$, respectively). In terms of tumor size, in patients with pT1a tumor, RN is associated with a significantly higher risk of mortality before life expectancy ((G) $P = 0.28$ and (H) $P < 0.0001$, respectively).

Abbreviations: P; P value, PN; partial nephrectomy, RN; radical nephrectomy.

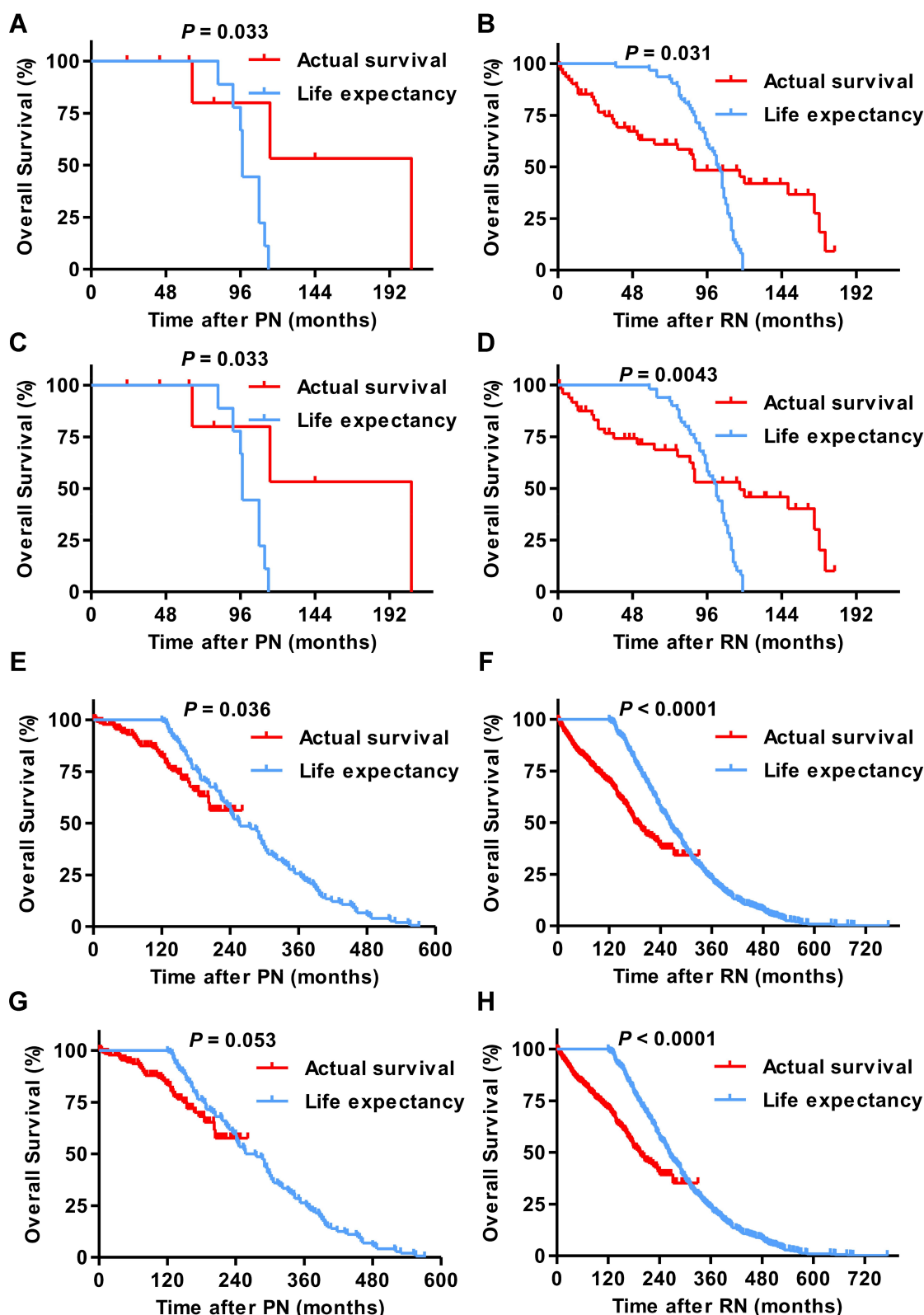


Figure 2 Comparison of actual overall survival with life expectancy in patients with performance status 0 according to the remaining life expectancy. In patients with life expectancy <10 years, there is a difference between actual overall survival (OS) and life expectancy in the partial nephrectomy (PN) group and radical nephrectomy (RN) group ((A) $P=0.033$ and (B) $P=0.031$, respectively), while when the analysis is limited to patients with performance status 0, RN is associated with a significantly higher risk of mortality before life expectancy ((C) $P=0.033$ and (D) $P=0.0043$, respectively). In patients with life expectancy ≥ 10 years, there is a significant difference between actual OS and life expectancy in the PN group and RN group ((E) $P=0.036$ and (F) $P<0.0001$, respectively), while when the analysis is limited to patients with performance status 0, RN is significantly associated with a higher risk of mortality before life expectancy ((G) $P=0.053$ and (H) $P<0.0001$, respectively).

Abbreviations: P; P value, PN; partial nephrectomy, RN; radical nephrectomy.

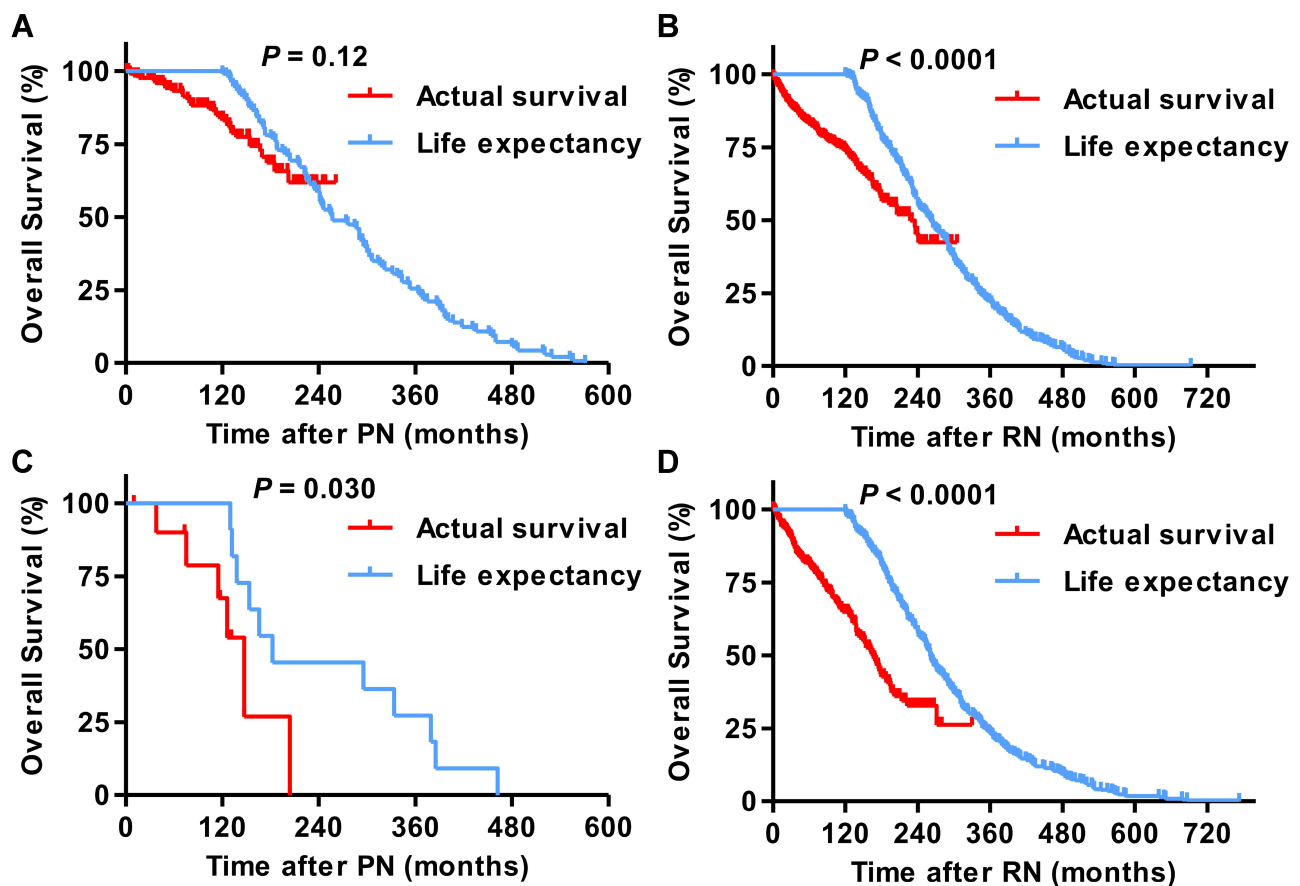


Figure 3 Comparison of actual overall survival with life expectancy in patients with pT1a or pT1b/2 according to the remaining life expectancy. In patients with life expectancy ≥ 10 years and a pT1a tumor, there is no significant difference between actual overall survival (OS) and life expectancy in the partial nephrectomy (PN) group, but there is a significant difference in the radical nephrectomy (RN) group ((A) $P=0.12$ and (B) $P<0.0001$, respectively). On the contrary, in patients with life expectancy ≥ 10 years and a pT1b/2 tumor, there is a significant difference between actual OS and life expectancy in the PN group and RN group ((C) $P=0.030$ and (D) $P<0.0001$, respectively).

Abbreviations: P; P value, PN; partial nephrectomy, RN; radical nephrectomy.

found that patients with PS0 who underwent RN had a high risk of mortality (Figures S1 and S2). Our previous report showed that PN, which was carried out with a microwave tissue coagulator (MTC) without hilar clamping, was not associated with reduced RRF.¹² In this study, all PNs were also carried out with MTC without hilar clamping regardless of laparoscopic or open surgery. It remains difficult to understand why temporal clamping affects long-term mortality in patients with localized RCC.

Considering that PS and comorbidities are obviously important in selecting surgical methods, there may be selection bias. Aziz et al suggested that young patients more frequently underwent PN than older patients.¹³ In this study, there was no significant difference in the age at surgery or life expectancy in the PN and RN groups and PN showed improved survival. In patients with PS0, PN had better survival compared to RN and there was no significant difference between actual OS and life

expectancy in PN patients. Furthermore, even in patients with PS0 and life expectancy ≥ 10 years, PN showed better survival than RN and actual OS and life expectancy differed in the PN group, but it did not reach statistical significance. Therefore, the importance of considering PS is reaffirmed and PN should be considered for patients with PS0 and life expectancy ≥ 10 years when technically feasible.

In this study, we stratified patients by life expectancy because the implications of aging are different depending on sex. Daskivich et al showed that in patients with life expectancy < 10 years, T1a RCC was treated with RN in 61% and PN in 24% of patients. They concluded that life expectancy should be incorporated into treatment decision-making in early-stage RCC.¹⁴ The present study suggested that PN patients with life expectancy < 10 years tended to have OS as long as life expectancy, especially patients with life expectancy < 10 years and PS0. Although our

results do not justify the recommendation of PN in patients with life expectancy <10 years, PN may be recommended if the patients are PS0. On the other hand, PN had survival benefits for patients with life expectancy ≥ 10 years in this study as expected, especially in patients with life expectancy ≥ 10 years and PS0. In this study, renal function was not evaluated and the reason for the survival advantages of PN remains unclear. However, the present study suggested that PN plays a role in extending survival up to life expectancy.

With regard to the association between life expectancy and tumor size, PN had a low risk of mortality compared to RN in patients with life expectancy ≥ 10 years and pT1a, and patients who underwent PN tended to survive up to their life expectancy. On the other hand, PN was not associated with a survival advantage in patients with life expectancy ≥ 10 years and pT1b/2 compared to RN. Woldu et al showed that patients with CKD stage-II benefited from PN in terms of preserving renal function.¹⁰ Therefore, PN for localized RCC and tumor size >40 mm should be carried out preoperatively for patients with poor renal function and/or only one kidney. Advancement in surgical technologies, such as robotic surgery, should facilitate challenging PN, but further evidence is needed to aid surgical decision-making.

The present study had some limitations including its retrospective nature, intergroup differences in patient characteristics, potential differences in life expectancy in different countries, a lack of renal function data, and insufficient information on clinicopathological characteristics, such as comorbidities, perioperative complications, surgical techniques, and tumor grade. Furthermore, there was a big difference in the number of patients between RN group and PN group. Careful interpretation is necessary, and further research is warranted to support our findings. In the future, we plan to increase the number of patients, extend the follow-up period, and analyze again. Evidence-based recommendations for appropriate surgical decision-making are essential for improved management of patients with localized RCC.

Conclusion

Our findings suggested that PN has an important role for patients with PS0 or pT1a and that life expectancy should be considered in surgical decision-making. An

understanding of this information could lead to improved treatment strategies and improved OS in patients with localized RCC. Further research is needed to establish appropriate treatment strategies and criteria to support current clinical practice.

Acknowledgments

The authors would like to thank all patients who participated in this study for their important contributions. We also wish to thank Mariko Yoshimura (Department of Urology, Nara Medical University, Nara, Japan) for invaluable help with obtaining and summarizing the data used in this study.

Disclosure

The authors report no conflicts of interest in this work.

References

1. Miller KD, Siegel RL, Lin CC, et al. Cancer treatment and survivorship statistics, 2016. *CA Cancer J Clin.* 2016;66(4):271–289. doi:10.3322/caac.21349
2. Gershman B, Thompson RH, Boorjian SA, et al. Radical versus partial nephrectomy for cT1 renal cell carcinoma. *Eur Urol.* 2018;74(6):825–832. doi:10.1016/j.eururo.2018.08.028
3. Simone G, Tuderti G, Anceschi U, et al. Oncological outcomes of minimally invasive partial versus minimally invasive radical nephrectomy for cT1-2/N0/M0 clear cell renal cell carcinoma: a propensity score-matched analysis. *World J Urol.* 2017;35(5):789–794. doi:10.1007/s00345-016-1923-2
4. Takagi T, Kondo T, Iizuka J, et al. Comparison of survival rates in stage 1 renal cell carcinoma between partial nephrectomy and radical nephrectomy patients according to age distribution: a propensity score matching study. *BJU Int.* 2016;117(6B):E52–9. doi:10.1111/bju.13200
5. Van Poppel H, Da Pozzo L, Albrecht W, et al.; European Organization for Research and Treatment of Cancer (EORTC); National Cancer Institute of Canada Clinical Trials Group (NCIC CTG); Southwest Oncology Group (SWOG); Eastern Cooperative Oncology Group (ECOG). A prospective randomized EORTC intergroup Phase 3 study comparing the complications of elective nephron-sparing surgery and radical nephrectomy for low-stage renal cell carcinoma. *Eur Urol.* 2007;51(6):1606–1615. doi:10.1016/j.eururo.2006.11.013
6. Kim SP, Thompson RH, Boorjian SA, et al. Comparative effectiveness for survival and renal function of partial and radical nephrectomy for localized renal tumors: a systematic review and meta-analysis. *J Urol.* 2012;188(1):51–57. doi:10.1016/j.juro.2012.03.006
7. Go AS, Chertow GM, Fan D, McCulloch CE, Hsu CY. Chronic kidney disease and the risks of death, cardiovascular events, and hospitalization. *N Engl J Med.* 2004;351(13):1296–1305. doi:10.1056/NEJMoa041031
8. Shuch B, Hanley J, Lai J, et al.; Urologic Diseases in America Project. Overall survival advantage with partial nephrectomy: a bias of observational data? *Cancer.* 2013;119(16):2981–2989. doi:10.1002/cncr.28141
9. Wang Z, Wang G, Xia Q, et al. Partial nephrectomy vs. radical nephrectomy for renal tumors: a meta-analysis of renal function and cardiovascular outcomes. *Urol Oncol.* 2016;34(12):533.e11–533.e19. doi:10.1016/j.urolonc.2016.07.007

10. Woldu SL, Weinberg AC, Korets R, et al. Who really benefits from nephron-sparing surgery? *Urology*. 2014;84(4):860–867. doi:10.1016/j.urology.2014.05.061
11. Scosyrev E, Messing EM, Sylvester R, Campbell S, Van Poppel H. Renal function after nephron-sparing surgery versus radical nephrectomy: results from EORTC randomized trial 30904. *Eur Urol*. 2014;65(2):372–377. doi:10.1016/j.eururo.2013.06.044
12. Inoue T, Nakai Y, Miyake M, et al. Non-ischemic, non-renalorrhaphy laparoscopic partial nephrectomy using a microwave tissue coagulator for small renal tumors. *J Microw Surg*. 2016;34:1–6. doi:10.3380/jmicrowavesurg.34.1
13. Aziz A, May M, Zigeuner R, et al.; Members of the CORONA Project and the Young Academic Urologists Renal Cancer Group. Do young patients with renal cell carcinoma feature a distinct outcome after surgery? A comparative analysis of patient age based on the multinational CORONA database. *J Urol*. 2014;191(2):310–315. doi:10.1016/j.juro.2013.08.021
14. Daskivich TJ, Tan HJ, Litwin MS, Hu JC. Life expectancy and variation in treatment for early stage kidney cancer. *J Urol*. 2016;196(3):672–677. doi:10.1016/j.juro.2016.03.133

Research and Reports in Urology

Dovepress

Publish your work in this journal

Research and Reports in Urology is an international, peer-reviewed, open access journal publishing original research, reports, editorials, reviews and commentaries on all aspects of adult and pediatric urology in the clinic and laboratory including the following topics: Pathology, pathophysiology of urological disease; Investigation and

treatment of urological disease; Pharmacology of drugs used for the treatment of urological disease. The manuscript management system is completely online and includes a very quick and fair peer-review system, which is all easy to use. Visit <http://www.dovepress.com/testimonials.php> to read real quotes from published authors.

Submit your manuscript here: <https://www.dovepress.com/research-and-reports-in-urology-journal>