

# Screening and Identification of Potential Hub Genes in Myocardial Infarction Through Bioinformatics Analysis

This article was published in the following Dove Press journal:  
*Clinical Interventions in Aging*

Yong-Wei Yu<sup>1,\*</sup>  
Yang-Jing Xue<sup>1,\*</sup>  
La-La Qian<sup>2</sup>  
Zhi Chen<sup>2</sup>  
Jia-Qun Que<sup>1</sup>  
Kai-Yu Huang<sup>1</sup>  
Shuai Liu<sup>1</sup>  
Ying-Bei Weng<sup>1</sup>  
Fang-Ning Rong<sup>1</sup>  
Kang-Ting Ji<sup>1</sup>  
Jing-Ni Zeng<sup>1</sup>

<sup>1</sup>Department of Cardiology, The Second Affiliated and Yuying Children's Hospital of Wenzhou Medical University, Wenzhou 312500, People's Republic of China; <sup>2</sup>Department of Cardiology, Pingyang County Hospital of Traditional Chinese Medicine, Wenzhou 312500, People's Republic of China

\*These authors contributed equally to this work

**Background:** Myocardial infarction (MI) is a common cause of death worldwide. It is characterized by coronary artery occlusion that causes ischemia and hypoxia of myocardial cells, leading to irreversible myocardial damage.

**Materials and Methods:** To explore potential targets for treatment of MI, we reorganized and analyzed two microarray datasets (GSE4648 and GSE775). The GEO2R tool was used to screen for differentially expressed genes (DEGs) between infarcted and normal myocardium. We used the Database for Annotation, Visualization and Integrated Discovery (DAVID) to perform Gene Ontology functional annotation analysis (GO analysis) and the Kyoto Encyclopedia of Genes and Genomes for pathway enrichment analysis (KEGG analysis). We examined protein-protein interactions to characterize the relationship between differentially expressed genes, and we screened potential hub genes according to the degree of connection. PCR and Western blotting were used to identify the core genes.

**Results:** At different times of infarction, a total of 35 genes showed upregulation at all times; however, none of the genes showed downregulation at all 3 times. Similarly, 10 hub genes with high degrees of connectivity were identified. In vivo and in vitro experiments suggested that expression levels of MMP-9 increased at various times after myocardial infarction and that expression increased in a variety of cells simultaneously.

**Conclusion:** Expression levels of *MMP-9* increase throughout the course of acute myocardial infarction, and this expression has both positive and negative sides. Further studies are needed to explore the role of *MMP-9* in MI treatment. The potential values of *Il6*, *Spp1*, *Ptgs2*, *Serpine1*, *Plaur*, *Cxcl5*, *Lgals3*, *Serpib2*, and *Cd14* are also worth exploring.

**Keywords:** myocardial infarction, MMP-9, GEO, microarray dataset, hub gene

## Introduction

Ischemic heart disease is the main cause of death all over the world.<sup>1,2</sup> Acute myocardial infarction (AMI) can be thought of as a severe, even fatal type of ischemic cardiomyopathy.<sup>3,4</sup> Coronary artery acute occlusion leads to myocardial ischemia, hypoxia, and impaired energy supply,<sup>5</sup> leading acute imbalance of hemodynamics and cardiomyocyte irreversible damage.<sup>6</sup> The current treatments of acute myocardial infarction include thrombolysis and surgery. However, recanalization of the blood vessels causes reperfusion injury, which aggravates myocardial damage and microcirculation disturbances, further damaging cardiac function.<sup>7,8</sup> Myocardial cells are non-renewable cells,<sup>9</sup> and remaining viable myocardium is insufficient to fully compensate for cardiac function. There is currently no treatment

Correspondence: Kang-Ting Ji;  
Jing-Ni Zeng  
Department of Cardiology, The Second Affiliated and Yuying Children's Hospital of Wenzhou Medical University, Wenzhou 312500, People's Republic of China  
Email jikt@wmu.edu.cn;  
zengjn6015@163.com

that can solve this problem completely. Therefore, it is necessary to find new and better ways to augment current treatment.

In the present study, we explored changes in acute myocardial infarction in an animal model and attempted to identify possible therapeutic targets. In order to identify differentially expressed genes (DEGs) between AMI and sham groups in myocardial tissue originated from mice, we use bioinformatics methods to analyze the gene expression profiling data, downloaded from the Gene Expression Omnibus (GEO) database. Functional enrichment analysis was performed of the screened DEGs using Gene Ontology (GO) functional annotation and the Kyoto Encyclopedia of Genes and Genomes (KEGG) pathway. Protein–protein interaction network analyses of the DEGs were also performed to help us explore the potential hub genes and the underlying molecular mechanisms of AMI.

## Materials and Methods

### Study Design

Gene expression data were obtained from GEO database, and further screening was carried out according to the conditions of a myocardial infarction in vivo model. We used the GEO2R online analysis tool to screen out the differentially expressed genes between the infarct and the sham groups at various time points, and compare the differentially expressed genes at multiple time points. Using Venn diagrams, we identified genes that were all upregulated or all downregulated at various time points. Then, we perform GO and KEGG pathway analysis and protein–protein interaction network analysis for this segment of DEGs. By evaluating the degree of each protein node in the protein–protein interaction network, the 10 most important core genes were identified. From this core gene screen, meaningful genes were verified using in vivo animal models and several in vitro cell models.

### Data Sources

The gene expression datasets used in our research were downloaded from the GEO database (<https://www.ncbi.nlm.nih.gov/geo/>), which were created by NCBI, containing high-throughput gene expression data from research institutes worldwide. After careful comparison, two microarray datasets (GSE775 and GSE4648) were downloaded from GEO. GSE775 and GSE4648 were based on platform GPL 81 ([MG\_U74Av2] Affymetrix Murine Genome U74A Version 2 Array). We further screened according

**Table 1** Statistics and Further Screened of the Two Microarray Databases Derived from the GEO Database

Dataset ID	Infarction Time	Number		
		Sham	MI	Total
GSE4648	1 day	2	2	4
GSE4648	2 day	2	2	4
GSE775	2 day	1	3	4
GSE775	7 day	1	3	4

to animal modeling conditions and obtained results (Table 1). All data in this study are available free of charge online.

### Data Processing of DEGs

The GEO2R online analysis tool (<https://www.ncbi.nlm.nih.gov/geo/geo2r/>) was used to identify the DEGs between AMI and sham operation samples from mice. We defined the adjusted P-value < 0.05 and |log FC| ≥ 2.0 as the cutoff criteria in advance. Genes that met this criteria were considered DEGs and genes that did not meet the criteria were temporarily discarded. Statistical analysis was carried out for each dataset, and the intersections were identified using the Venn diagram web tool (<http://bioinformatics.psb.ugent.be/webtools/Venn/>) to screen out genes that showed the same changes at three different time points.

### GO and KEGG Pathway Analysis of DEGs

GO analysis is a more common method for large-scale gene function enrichment research. Gene function can be divided into the following three categories: BP (biological process), MF (molecular function), and CC (cellular component). KEGG is a useful database that stores large amounts of data on genomics, biological pathways, signaling pathways, diseases, drugs, and chemicals. We used Database for Annotation, Visualization and Integrated Discovery (DAVID) tools (<https://david.ncifcrf.gov/>) to explore GO annotation analysis and KEGG pathway enrichment analysis of DEGs. P < 0.05 and counts ≥ 2.0 as the cutoff criteria were considered to be statistically significant.

### Protein–Protein Interaction Network Construction

The Search Tool for the Retrieval of Interacting Genes (STRING) database (<http://string-db.org/>) is designed to

accomplish the protein–protein interaction network analyses. To explore possible protein–protein interaction network interactions, the DEGs screened previously were mapped to the STRING database. The protein–protein interaction pairs were extracted with a minimum required interaction score  $> 0.4$ .

## Potential Hub Gene Identification

We used Cytoscape software ([www.cytoscape.org/](http://www.cytoscape.org/)) and a plugin called CytoHubba to evaluate the degree of each protein node. Nodes with higher connectivity degree are often more important in maintaining the stability of the entire network, and nodes with lower connectivity degree are relatively unimportant. In our research, the 10 most connected protein nodes were considered to be our potential hub genes.

## Animals and Myocardial Infarction Model

All related operations involving animals followed the “Guidelines for Care and Use of Laboratory Animals” (NIH Publication No. 85–23, revised 1996) published by the US National Institutes of Health (Bethesda, MD, USA). Procedures were approved by the Animal Care and Use Committee at the Wenzhou Medical University. All male C57/BL6 mice (6–7 weeks old and 20–25 g in weight) were purchased from the SLAC Laboratory Animal Centre of Shanghai (Shanghai, China). The myocardial infarction model (MI) was implemented according to our previous study.<sup>10</sup> In brief, the mice were first anesthetized with isoflurane and were intubated. Then, a thoracotomy was performed to expose the heart at the third or fourth rib. The left anterior descending coronary artery was ligated using 7–0 silk thread to induce myocardial ischemia. Mice in the sham group underwent the same operation except that the arteries were not ligated.

## Cell Culture and Glucose and Oxygen Deprivation Model (OGD)

Mouse cardiomyocytes and fibroblasts were extracted from newborn C57/B6J mice. The method was previously described by our group.<sup>11</sup> The macrophages were RAW264.7. Mouse coronary endothelial cells were purchased from ATCC. Neutrophils were obtained from peripheral blood according to manufacturer’s instructions (Solarbio; Beijing, China, P9201). Cells were maintained in a hypoxic incubator (N<sub>2</sub> 94%, O<sub>2</sub> 1% and CO<sub>2</sub> 5%) for 12 hours in medium deprived of serum and glucose.

## Real-Time Quantitative PCR

Total RNA was extracted from the treated cells using TRIzol reagent (Ambion) and was further purified. A one-step reverse transcription amplification was performed using a cDNA reverse transcription kit (TaKaRa), and the corresponding primers (ShengGong, Shanghai, China) were used for quantitative analysis.

## Western Blot Analysis

Myocardial tissue/cell total protein preparation and concentration determination kits were from Beyotime (Shanghai, China). Proteins of different molecular weights were separated on SDS-PAGE gels, transferred to 0.22- $\mu$ m PVDF membranes, blocked with skimmed milk powder, and then incubated with primary antibodies as follows: MMP-9 (Abcam), GAPDH (CST) at 4°C overnight. After incubating with the corresponding secondary antibody the next day, protein bands were scanned by a ChemiDoc MP device (Bio-Rad, Hercules, CA, USA). Finally, ImageJ software (NIH, USA) was used for analysis.

## Statistical Analysis

Data were presented as mean  $\pm$  SD and were analyzed using SPSS version 21.0 (IBM, Armonk, NY, USA). All data we used were normally distributed. A two-tailed unpaired Student’s *t*-test was conducted to compare two experimental groups. One way analysis of variance (ANOVA) followed by Duncan’s T3 multiple-range test was used for comparisons of more than two groups. P-values less than 0.05 were considered statistically significant.

## Results

### Identification of DEGs

Two gene expression profiles (GSE4648 and GSE775) were selected (Table 1). GSE4648 included two AMI samples and two normal samples each at 1 and 2 days after myocardial infarction, and GSE775 at 2 days and 7 days contained three AMI specimens and one normal specimen, respectively. Then, we sorted again according to the infarct time (Table 2).

According to the standard of  $P < 0.05$  and  $|\log FC| \geq 2.0$ , a total of 62 DEGs were identified from 1 day, including 62 upregulated genes and 0 downregulated gene. In another 2-day infarct group, 220 DEGs were identified, 173 genes were upregulated and 47 genes

**Table 2** Reclassifying Two Gene Expression Profiles Based on Infarct Time

Infarction Time	Number		
	Sham	MI	Total
1 day	2	2	4
2 day	3	5	8
7 day	1	3	4

**Table 3** Number of Differential Genes in Different Infarct Groups

Infarction Time	Number		
	Up	Down	Total
1 day	62	0	62
2 day	173	47	220
7 day	602	218	820

were downregulated. In the 7-day infarction group, there were 820 DEGs, containing 602 upregulated genes and 218 downregulated genes (Table 3). All DEGs were compared between AMI samples and normal samples. The differentially expressed genes that intersected with one another were then obtained using Venn analysis (Figure 1A and B). Finally, we obtained 35 upregulated DEGs with significantly differential expression in all three infarct groups; however, there were no differential genes that were downregulated.

## Functional Enrichment Analyses of DEGs

We used DAVID to work on our DEGs to perform GO annotation analysis and KEGG pathway enrichment analysis (Table 4).

The GO analysis results were composed of three parts: biological process, cell component, and molecular function. The biological process (BP) showed significantly altered inflammatory responses, positive regulation of gene expression, positive regulation of cell proliferation, negative regulation of apoptotic process, regulation of cell proliferation, immune response, wound healing, chemotaxis, response to lipopolysaccharide, cellular response to lipopolysaccharide, angiogenesis and negative regulation of gene expression. The DEGs were enriched in cell component (CC), including extracellular region, extracellular space, extracellular exosome, extracellular matrix, and external side of plasma membrane. For the molecular function (MF), the DEGs were enriched in fibronectin

binding and peptidase inhibitor activity. Otherwise, the enriched KEGG pathway included transcriptional misregulation in cancer, amoebiasis and cytokine-cytokine receptor interaction.

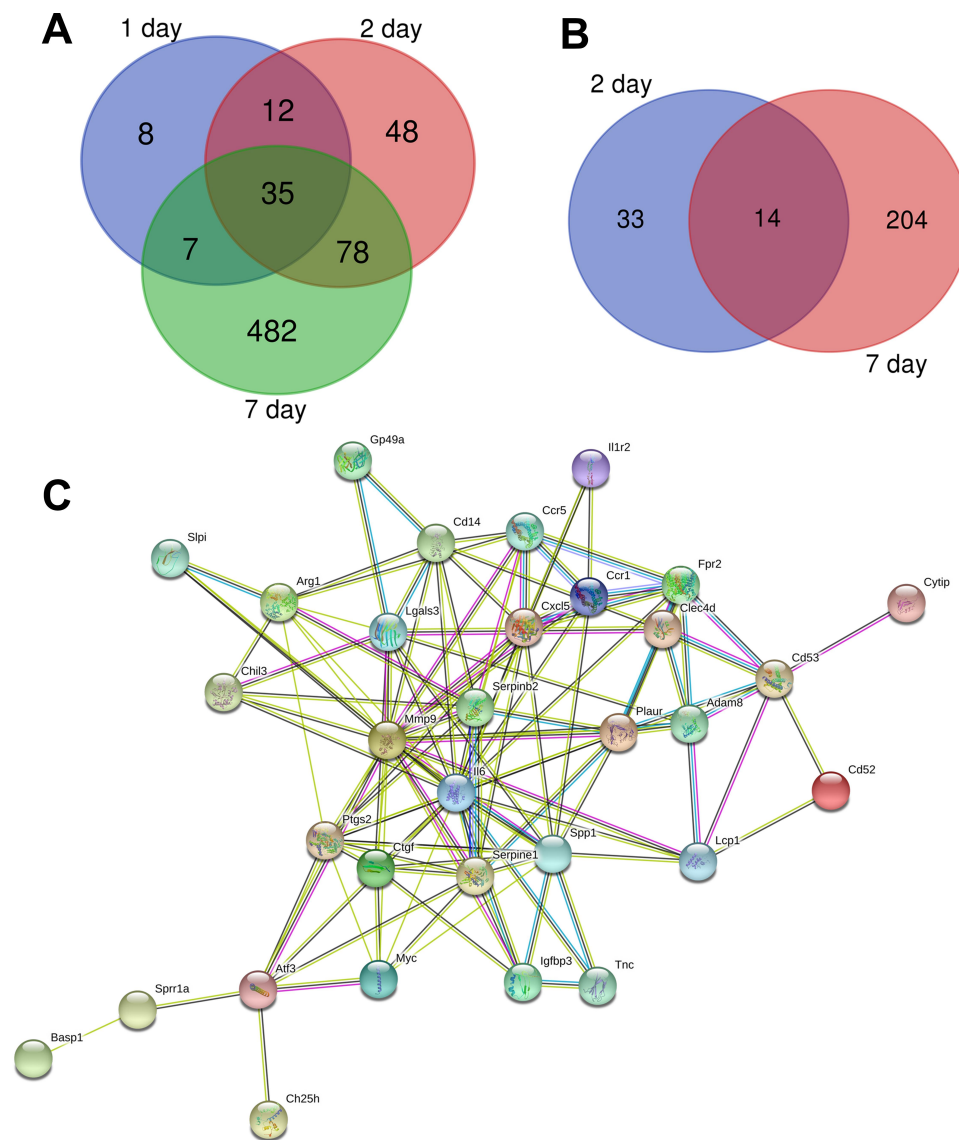
## Protein–Protein Interaction Network Construction and Hub Gene Identification

The protein–protein interactions of the DEGs were predicted using STRING tools. A total of 32 nodes and 117 edges were related in the protein–protein interaction network (Figure 1C). The top 10 core genes were selected using connectivity degrees in the protein–protein interaction network. Their names and functions are display in Table 5. Interleukin 6 (*Il6*) was the most obvious gene with connectivity degree = 22; the next one was matrix metalloproteinase 9 (*MMP-9*; degree = 20), followed by secreted phosphoprotein 1 (*Spp1*; degree = 12), prostaglandin-endoperoxide synthase 2 (*Ptgs2*; degree = 12), serine (or cysteine) peptidase inhibitor, clade E, member 1 (*Serpine1*; degree = 11), plasminogen activator, urokinase receptor (*Plaur*; degree = 10), chemokine (C-X-C motif) ligand 5 (*Cxcl5*; degree = 10), lectin, galactose binding, soluble 3 (*Lgals3*; degree = 10), serine (or cysteine) peptidase inhibitor, clade B, member 2 (*Serpinb2*; degree = 9), and CD14 antigen (*Cd14*; degree = 9). All of the above core genes belong to the upregulation group.

## In vivo and vitro Experimental Verification

Considering that there have been many reports related to *IL-6* and myocardial infarction,<sup>12</sup> and connectivity degrees, we focused on measuring changes in *MMP-9* expression levels. First, we measured changes in *MMP-9* mRNA levels in myocardial infarction samples. Consistent with the microarray results, there were increases in expression levels at 1, 2, and 7 days after infarction (Figure 2A). Because each microarray result is a comparison between the infarct group and the sham group, we also focused on the comparison in mRNA levels between the infarct group and the sham group. However, we also saw that mRNA levels at 2 days of infarction were significantly higher than those of the previous day, and that changes in *MMP-9* mRNA levels between different infarction groups were also worthy of follow-up study. We also measured changes in individual cells, including cardiomyocytes, fibroblasts, endothelial cells, macrophages and neutrophils. We found that there were different degrees of elevation in different cells (Figure 2B–F). Among them, the changes in





**Figure 1** Venn diagram of DEGs and protein-protein interaction network. **(A)** Upregulated genes of DEGs common to all three infarct groups. **(B)** Downregulated genes of DEGs common to all three infarct groups. **(C)** Protein-protein interaction network constituted with the DEGs.

macrophages and neutrophils were the most obvious, which preliminarily suggests that these two kinds of cells play a substantial role in the increase of MMP-9 expression during myocardial infarction.

We also needed to detect changes in protein levels. Looking at the in vivo model first, we found that expression levels of *MMP-9* increased sequentially over time (Figure 2G and H), which was not consistent with the results of mRNA measurements. The mRNA results showed that the 7th day was slightly lower than the 2nd day; however, protein levels on the 7th day higher than those of the 2nd day. We speculated that the change in *MMP-9* mRNA expression may occur earlier than the protein level changes. We monitored expression levels of

*MMP-9* in in vitro models, including cardiomyocytes, fibroblasts, endothelial cells, and macrophages, and found that *MMP-9* expression all increased after 12 hours of OGD treatment (Figure 2I–P). The difference was that the increase in *MMP-9* was not consistent in various cell types.

## Discussion

Although some progress has been made in terms of revascularization, surgical treatment, and drug treatment, cardiovascular diseases, especially acute myocardial infarction (AMI), remain the leading cause of death in developed countries.<sup>1,2</sup> Cardiomyocytes are non-renewable cells,<sup>9</sup> that will cause under-compensation for residual

**Table 4** GO and KEGG Pathway Enrichment Analysis of DEGs

Category	Term	Description	Count	P-value
BP term	GO:0006954	Inflammatory response	10	2.96E-09
BP term	GO:0010628	Positive regulation of gene expression	7	4.21E-05
BP term	GO:0008284	Positive regulation of cell proliferation	7	2.27E-04
BP term	GO:0043066	Negative regulation of apoptotic process	6	0.002199481
BP term	GO:0042127	Regulation of cell proliferation	5	5.13E-04
BP term	GO:0006955	Immune response	5	0.001008589
BP term	GO:0042060	Wound healing	4	4.99E-04
BP term	GO:0006935	Chemotaxis	4	9.67E-04
BP term	GO:0032496	Response to lipopolysaccharide	4	0.00416379
BP term	GO:0071222	Cellular response to lipopolysaccharide	4	0.004910328
BP term	GO:0001525	Angiogenesis	4	0.007114784
BP term	GO:0010629	Negative regulation of gene expression	4	0.009434043
CC term	GO:0005576	Extracellular region	16	2.21E-08
CC term	GO:0005615	Extracellular space	15	2.80E-08
CC term	GO:0070062	Extracellular exosome	13	6.27E-04
CC term	GO:0031012	Extracellular matrix	5	0.001266141
CC term	GO:0009897	External side of plasma membrane	5	0.001669616
MF term	GO:0001968	Fibronectin binding	4	1.32E-05
MF term	GO:0030414	Peptidase inhibitor activity	4	9.85E-04
KEGG pathway	mmu05202	Transcriptional misregulation in cancer	6	3.90E-05
KEGG pathway	mmu05146	Amoebiasis	5	1.65E-04
KEGG pathway	mmu04060	Cytokine–cytokine receptor interaction	5	0.002552568

**Table 5** Top 10 Core Genes with Higher Degrees of Connectivity

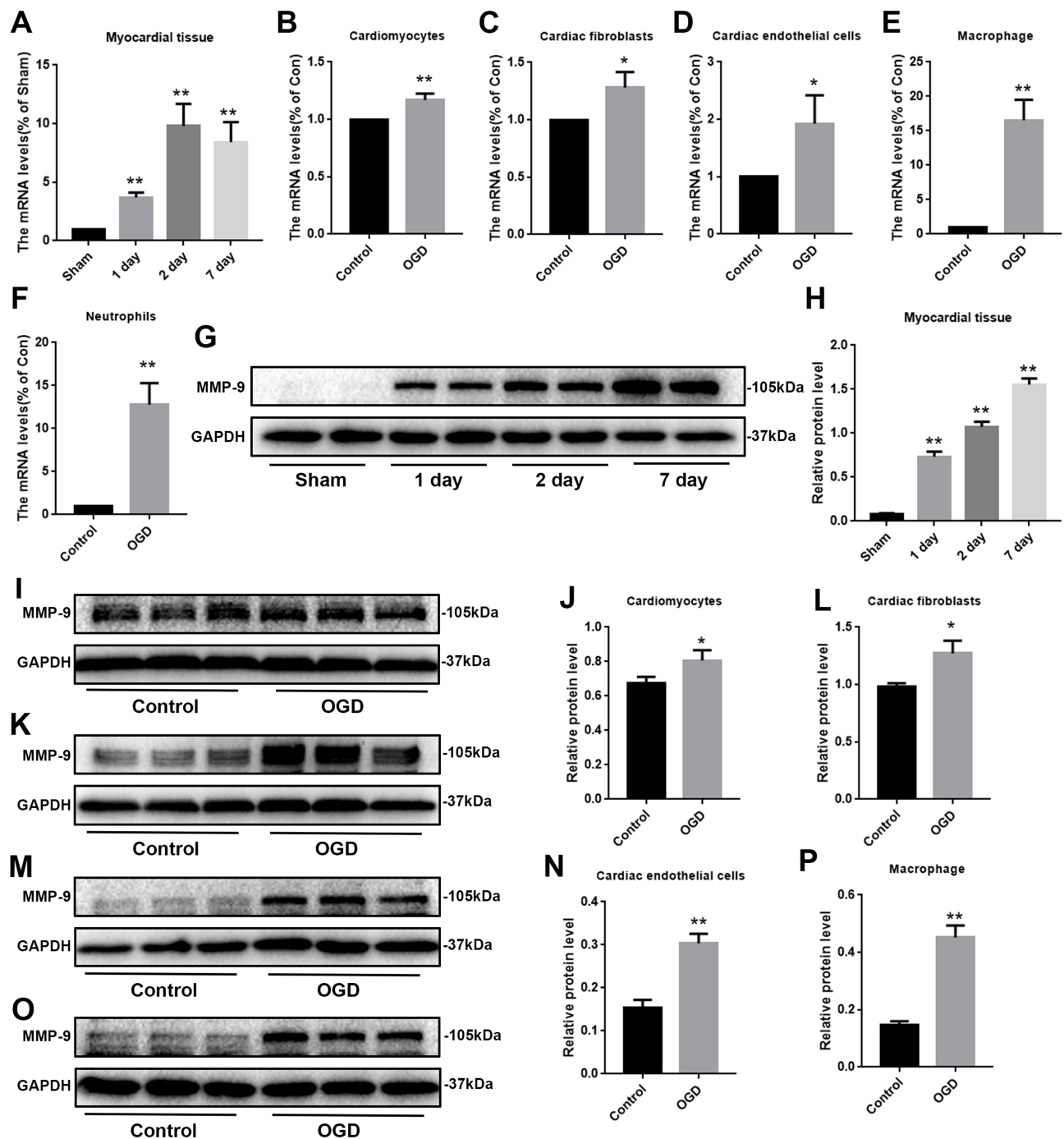
Gene Symbol	Gene Description	Degree
<i>Il6</i>	Interleukin 6	22
<i>MMP-9</i>	Matrix metalloproteinase 9	20
<i>Spp1</i>	Secreted phosphoprotein 1	12
<i>Ptgs2</i>	Prostaglandin-endoperoxide synthase 2	12
<i>Serpine1</i>	Serine (or cysteine) peptidase inhibitor, clade E, member 1	11
<i>Plaur</i>	Plasminogen activator, urokinase receptor	10
<i>Cxcl5</i>	Chemokine (C-X-C motif) ligand 5	10
<i>Lgals3</i>	Lectin, galactose binding, soluble 3	10
<i>Serpib2</i>	Serine (or cysteine) peptidase inhibitor, clade B, member 2	9
<i>Cd14</i>	CD14 antigen	9

myocardium in the context of AMI. To better study the pathophysiological changes after the onset of acute myocardial infarction, the greatest limitation is that it is difficult to obtain myocardial tissue samples after the event.<sup>13,14</sup> Therefore, in the present study, we screened microarray datasets after simulated acute myocardial infarction in C57/BL6 mice. To better simulate acute myocardial infarction, we set the infarct time between

1 and 7 days.<sup>15</sup> The expectation was that we would identify new targets for the treatment of acute myocardial infarction or that we would identify pathways to advance relevant research.

In the present study, differentially expressed genes, protein–protein interactions, and biological functional enrichment were used based on publicly available databases to identify potential core genes associated with acute myocardial infarction. DEGs between AMI and healthy heart were screened out based on the GEO database. We identified 35 upregulated DEGs. These DEGs were associated with GO terms such as extracellular region, extracellular space, extracellular exosome and inflammatory response, and were significantly enriched in the KEGG terms transcriptional misregulation in cancer, amoebiasis and cytokine–cytokine receptor interaction. A protein–protein interaction network was built to investigate the interrelationship of the DEGs, and 10 core genes were identified, including *Il6*, *MMP-9*, *Spp1*, *Ptgs2*, *Serpine1*, *Plaur*, *Cxcl5*, *Lgals3*, *Serpib2*, and *Cd14*. All the core genes were in the upregulation group.

Our GO analysis found that the main differences were concentrated in the cell component (CC) part, especially extracellular. Among the core genes we screened from the



**Figure 2** mRNA and protein expression levels in vivo and in vitro models. (A) The mRNA expression of MMP-9 within the myocardial infarction tissue, (n=3). (B–F) The mRNA expression of MMP-9 within the cardiomyocytes, fibroblasts, endothelial cells, macrophage and neutrophils, (n=3). (G, H) The protein expression of MMP-9 within the myocardial infarction tissue, (n=4). (I, J) The protein expression of MMP-9 within the cardiomyocytes, (n=3). (K, L) The protein expression of MMP-9 within the fibroblasts, (n=3). (M, N) The protein expression of MMP-9 within the endothelial cells, (n=3). (O, P) The protein expression of MMP-9 within the macrophage, (n=3). Data are means  $\pm$  SDs, \* $P < 0.05$ ; \*\* $P < 0.01$ .

protein–protein interaction network, *IL6* and *MMP-9* were the most significant. *IL6* is often used as an evaluative indicator,<sup>16</sup> and there have been many studies of it related to MI;<sup>12</sup> therefore, here, we discussed changes in *MMP-9* expression.

*MMP-9*, also called matrix metalloproteinase 9, is encoded by the *MMP-9* gene and is part of the zinc-dependent endopeptidase family.<sup>17</sup> *MMP-9* is secreted by a variety of cells, including endogenous cardiomyocytes, fibroblasts, and endothelial cells, as well as leukocytes that

temporarily infiltrate by infarcted heart muscle.<sup>18–20</sup> Studies have reported that, in human and animal models, infiltrating neutrophils are the main source of *MMP-9* after myocardial infarction.<sup>21–24</sup> Of course, macrophages are also a major source of *MMP-9*,<sup>25,26</sup> and all this is in line with our experimental results. Authors believe that *MMP-9* released by neutrophils is highest on the first day of acute myocardial infarction, and it is released on day 5 by macrophages.<sup>22,27</sup> However, although our results also show that neutrophils and macrophages secrete *MMP-9* much higher than other cells, our in vitro model adopted a single oxygen deprivation condition that could not fully simulate various time points after myocardial infarction. It could only show that the expression of *MMP-9* in the in vivo model continued to increase over time, and was accomplished by a variety of cells. We could not measure specific changes in certain cells over time, and this was a limitation. In addition, our verification results displayed an unusual finding: We found that protein levels of *MMP-9* were higher on day 7 than on day 2; however, mRNA levels of *MMP-9* on day 7 appeared to be slightly lower than those of day 2. We believe this is reasonable because the translation of mRNA into protein requires some time, which means that it takes a while to complete from the change in mRNA to the subsequent change at the protein level. We took samples of myocardial infarction tissue at the same times; nevertheless, there was a period of time between 2 and 7 days after myocardial infarction. During this time, the mRNA may have increased to a peak and began to decline, and the protein change may have just begun or even had not started to change.

*MMP-9* has many roles in myocardial infarction. First, *MMP-9* was involved in the degradation of extracellular matrix (ECM),<sup>28</sup> and the degradation of ECM increased leukocyte infiltration at the expense of increased microvascular permeability.<sup>22,29</sup> *MMP-9* also regulated left ventricular remodeling after myocardial infarction.<sup>30,31</sup> Attenuating *MMP-9* expression attenuated collagen degradation and reduce left ventricular rupture in mice.<sup>32</sup> It activates or inactivates chemokines and cytokines to exercise completely different functions.<sup>30</sup> Angiogenesis is an important compensatory factor after myocardial infarction that is also closely related to *MMP-9*. *MMP-9* clears the ECM around the endothelial cells after myocardial infarction, thereby promoting proliferation and migration.<sup>33</sup> *MMP-9* also enhances the interactions between VEGF and its receptor, opening the switch of angiogenesis.<sup>33,34</sup> *MMP-9* is directly required for angiogenesis and vascular

remodeling. Indirectly, *MMP-9* cleaves type 4 collagen in the basement membrane to induce endothelial growth and migration.<sup>33,35</sup> In this way, *MMP-9* is helpful for angiogenesis. Paradoxically, however, studies have reported that the loss of *MMP-9* promoted the formation of blood vessels.<sup>27,36</sup> It is worthwhile speculating whether *MMP-9* promotes or inhibits the formation of blood vessels in different ways. We speculate that *MMP-9* promotes blood vessel formation, at least for certain periods of time. Nevertheless, there are stages in which *MMP-9* inhibits angiogenesis or regulatory functions. Regarding the lack of *MMP-9* promoting angiogenesis, it can be suggested that *MMP-9* plays a more important role in mediating damage of the entire infarct. We speculate that this occurs at some specific times or for some specific cells. The protection provided by *MMP-9* is indispensable. Similarly, the ability of *MMP-9* to degrade some proteins can help clear necrotic cells after ischemia, thereby reducing secondary damage.<sup>37</sup>

Taken together, the data suggest that *MMP-9* has both a good side and a bad side after myocardial infarction, especially with respect to angiogenesis. There may be conflicts in other areas; however, we have not mentioned them here and further studies are needed to explore them. Because *MMP-9* has so many effects in myocardial infarction, it is clear that targeted regulation of *MMP-9* can improve myocardial ischemic injury to some extent. Unfortunately, the only currently approved MMP inhibitor is doxycycline, and unfortunately, this is an antibacterial drug, although studies have reported that it can weaken the damage of myocardial infarction,<sup>38,39</sup> nevertheless, we also need to consider what side effects can be caused by direct application. Fortunately, specific inhibitors of *MMP-9* have been tested in some disease models; these inhibitors include SB-3CT,<sup>40</sup> JNJ0966,<sup>41</sup> and salvianolic acid A.<sup>42</sup>

However, as mentioned above, *MMP-9* is produced by different cells at various times after the occurrence of myocardial infarction, or multiple cells are produced at the same time that also produce the same or opposite effects through different signaling pathways. Therefore, *MMP-9* inhibitors cannot be simply used, and it is necessary to consider different periods and duration of action. It is compelling to consider the use of *MMP-9* inhibitors to inhibit all the functions of *MMP-9* functions while using some means to maintain the beneficial properties of *MMP-9* regulation.



In addition to *MMP-9*, we identified nine other core genes associated with acute myocardial infarction, including *Il6*, *Spp1*, *Ptgs2*, *Serpine1*, *Plaur*, *Cxcl5*, *Lgals3*, *Serpinb2*, and *Cd14*. Many of these genes are also closely related to myocardial infarction. *Il6* is a well-known inflammation-related gene, and many studies regard it as an indicator of inflammation.<sup>43,44</sup> We did not discuss it in depth. *Ptgs2*, also called COX-2, promotes cell proliferation in tumors, accelerates angiogenesis,<sup>45</sup> and reduces inflammation in myocardial infarction.<sup>46</sup> *Spp1* is involved in the repair of osteopontin in myocardial infarction.<sup>47</sup> Mutations in the *Serpine1* gene affect the risk of myocardial infarction.<sup>48</sup> *Plaur*, which codes for urokinase-plasminogen activator receptor (Upar), may affect the susceptibility to MI,<sup>49</sup> *Cxcl5* affects the formation of new blood vessels in myocardial infarction.<sup>50</sup> Regarding *Lgals3* and *Serpinb2* in myocardial infarction, there are not many studies. *Cd14* is used as a cell marker.<sup>51</sup> Its specific function is not very clear, and further research is needed. Nevertheless, these genes all have promise as potential therapeutic targets.

## Conclusion

Our bioinformatics analysis was based on the gene expression dataset obtained from the GEO database and identified 10 hub genes that are differentially expressed between normal myocardium and infarcted myocardium: *MMP-9*, *Il6*, *Spp1*, *Ptgs2*, *Serpine1*, *Plaur*, *Cxcl5*, *Lgals3*, *Serpinb2*, and *Cd14*. All these genes are upregulated when myocardial infarction occurs, and are likely to be related to the progression of myocardial infarction. In AMI patients, we believe *MMP-9* is likely to be an important potential target. Our research results need further research. In short, *MMP-9* may play an important role in AMI.

## Data Sharing Statement

The data used to support the findings of this study are available from the corresponding author upon request.

## Ethics Approval

All our operations have been approved by the Animal Care and Use Committee at the wenzhou medical university.

## Acknowledgments

The authors thank Institute of Cardiovascular Molecular Pharmacology, Second Affiliated Hospital of Wenzhou Medical University.

## Author Contributions

All authors made a significant contribution to the work reported, whether that is in the conception, study design, execution, acquisition of data, analysis and interpretation, or in all these areas; took part in drafting, revising or critically reviewing the article; gave final approval of the version to be published; have agreed on the journal to which the article has been submitted; and agree to be accountable for all aspects of the work.

## Funding

This study was funded by the National Natural Science Foundation of China (no. 81573185), Research Fund for Lin He's Academician Workstation of New Medicine and Clinical Translation (no. 17331201) and Chinese Society of Integrated traditional Chinese and Western Medicine and Scientific Research Fund of HeHuang Pharmaceutical Industry (no. 2019002).

## Disclosure

The authors report no conflicts of interest for this work.

## References

1. Lopez A, Mathers C, Ezzati M, Jamison D, Murray C. Global and regional burden of disease and risk factors, 2001: systematic analysis of population health data. *Lancet*. 2006;367(9524):1747–1757. doi:10.1016/S0140-6736(06)68770-9
2. Mozaffarian D, Benjamin E, Go A, et al. Heart disease and stroke statistics-2016 update: a report from the American Heart Association. *Circulation*. 2016;133(4):e38–360.
3. Ibanez B, James S, Agewall S, et al. 2017 ESC guidelines for the management of acute myocardial infarction in patients presenting with ST-segment elevation: the task force for the management of acute myocardial infarction in patients presenting with ST-segment elevation of the European Society of Cardiology (ESC). *Eur Heart J*. 2018;39(2):119–177.
4. Rao S, Kaul P, Newby L, et al. Poverty, process of care, and outcome in acute coronary syndromes. *J Am Coll Cardiol*. 2003;41(11):1948–1954. doi:10.1016/S0735-1097(03)00402-9
5. Xia J, Wu H, Lai B, et al. Gene delivery of hypoxia-inducible VEGF targeting collagen effectively improves cardiac function after myocardial infarction. *Sci Rep*. 2017;7(1):13273. doi:10.1038/s41598-017-13547-1
6. Rieckmann M, Delgobo M, Gaal C, et al. Myocardial infarction triggers cardioprotective antigen-specific T helper cell responses. *J Clin Invest*. 2019;129(11):4922–4936. doi:10.1172/JCI123859
7. Galiuto L, DeMaria A, Iliceto S. Microvascular damage during myocardial ischemia-reperfusion: pathophysiology, clinical implications and potential therapeutic approach evaluated by myocardial contrast echocardiography. *Ital Heart J*. 2000;1(2):108–116.
8. Eefting F, Rensing B, Wigman J, et al. Role of apoptosis in reperfusion injury. *Cardiovasc Res*. 2004;61(3):414–426. doi:10.1016/j.cardiores.2003.12.023
9. Mathur A, Martin J. Stem cells and repair of the heart. *Lancet*. 2004;364(9429):183–192. doi:10.1016/S0140-6736(04)16632-4

10. Huang K, Wang J, Zhou Y, et al. Antithrombin III alleviates myocardial ischemia/reperfusion injury by inhibiting excessive autophagy in a phosphoinositide 3-Kinase/Akt-dependent manner. *Front Pharmacol*. 2019;10:516. doi:10.3389/fphar.2019.00516
11. Zeng J, Jin Q, Ruan Y, et al. Inhibition of TGF $\beta$ -activated protein kinase 1 ameliorates myocardial ischemia/reperfusion injury via endoplasmic reticulum stress suppression. *J Cell Mol Med*. 2020;24(12):6846–6859. doi:10.1111/jcmm.15340
12. Podgoreanu M, White W, Morris R, et al. Inflammatory gene polymorphisms and risk of postoperative myocardial infarction after cardiac surgery. *Circulation*. 2006;114:1275–1281. doi:10.1161/CIRCULATIONAHA.105.001032
13. Devaux Y, Bousquenaud N, Rodius S, et al. Transforming growth factor  $\beta$  receptor 1 is a new candidate prognostic biomarker after acute myocardial infarction. *BMC Med Genomics*. 2011;4(1):83. doi:10.1186/1755-8794-4-83
14. Kim J, Ghasemzadeh N, Eapen D, et al. Gene expression profiles associated with acute myocardial infarction and risk of cardiovascular death. *Genome Med*. 2014;6(5):40. doi:10.1186/gm560
15. Lyu J, Wang M, Kang X, et al. Macrophage-mediated regulation of catecholamines in sympathetic neural remodeling after myocardial infarction. *Basic Res Cardiol*. 2020;115(5):56. doi:10.1007/s00395-020-0813-3
16. Hunter C, Jones S. IL-6 as a keystone cytokine in health and disease. *Nat Immunol*. 2015;16(5):448–457. doi:10.1038/ni.3153
17. Lyngbakken M, Myhre P, Røsjø H, Omland T. Novel biomarkers of cardiovascular disease: applications in clinical practice. *Crit Rev Clin Lab Sci*. 2019;56(1):33–60.
18. Halade G, Jin Y, Lindsey M. Matrix metalloproteinase (MMP)-9: a proximal biomarker for cardiac remodeling and a distal biomarker for inflammation. *Pharmacol Ther*. 2013;139(1):32–40. doi:10.1016/j.pharmthera.2013.03.009
19. Turner N, Porter K. Regulation of myocardial matrix metalloproteinase expression and activity by cardiac fibroblasts. *IUBMB Life*. 2012;64(2):143–150. doi:10.1002/iub.594
20. Xie Z, Singh M, Singh K. Differential regulation of matrix metalloproteinase-2 and -9 expression and activity in adult rat cardiac fibroblasts in response to interleukin-1 $\beta$ . *J Biol Chem*. 2004;279(38):39513–39519. doi:10.1074/jbc.M405844200
21. Ardi V, Kupriyanova T, Deryugina E, Quigley J. Human neutrophils uniquely release TIMP-free MMP-9 to provide a potent catalytic stimulator of angiogenesis. *Proc Natl Acad Sci U S A*. 2007;104(51):20262–20267. doi:10.1073/pnas.0706438104
22. Lindsey M, Wedin K, Brown M, et al. Matrix-dependent mechanism of neutrophil-mediated release and activation of matrix metalloproteinase 9 in myocardial ischemia/reperfusion. *Circulation*. 2001;103(17):2181–2187. doi:10.1161/01.CIR.103.17.2181
23. Romanic A, Harrison S, Bao W, et al. Myocardial protection from ischemia/reperfusion injury by targeted deletion of matrix metalloproteinase-9. *Cardiovasc Res*. 2002;54(3):549–558. doi:10.1016/S0008-6363(02)00254-7
24. Kelly D, Cockerill G, Ng L, et al. Plasma matrix metalloproteinase-9 and left ventricular remodeling after acute myocardial infarction in man: a prospective cohort study. *Eur Heart J*. 2007;28(6):711–718. doi:10.1093/eurheartj/ehm003
25. Creemers E, Cleutjens J, Smits J, Daemen M. Matrix metalloproteinase inhibition after myocardial infarction: a new approach to prevent heart failure? *Circ Res*. 2001;89(3):201–210. doi:10.1161/hh1501.094396
26. Mauviel A. Cytokine regulation of metalloproteinase gene expression. *J Cell Biochem*. 1993;53(4):288–295. doi:10.1002/jcb.240530404
27. Lindsey M, Escobar G, Dobrucki L, et al. Matrix metalloproteinase-9 gene deletion facilitates angiogenesis after myocardial infarction. *Am J Physiol Heart Circ Physiol*. 2006;290(1):H232–H239. doi:10.1152/ajpheart.00457.2005
28. Page-McCaw A, Ewald A, Werb Z. Matrix metalloproteinases and the regulation of tissue remodelling. *Nat Rev Mol Cell Biol*. 2007;8(3):221–233. doi:10.1038/nrm2125
29. Stefanidakis M, Ruotula T, Borregaard N, Gahmberg C, Koivunen E. Intracellular and cell surface localization of a complex between  $\alpha$ M $\beta$ 2 integrin and promatrix metalloproteinase-9 progelatinase in neutrophils. *J Immunol*. 2004;172(11):7060–7068. doi:10.4049/jimmunol.172.11.7060
30. DeLeon-Pennell K, Altara R, Yabluchanskiy A, Modesti A, Lindsey M. The circular relationship between matrix metalloproteinase-9 and inflammation following myocardial infarction. *IUBMB Life*. 2015;67(8):611–618. doi:10.1002/iub.1408
31. Wagner D, Delagardelle C, Ernens I, Rouy D, Vaillant M, Beissel J. Matrix metalloproteinase-9 is a marker of heart failure after acute myocardial infarction. *J Card Fail*. 2006;12(1):66–72. doi:10.1016/j.cardfail.2005.08.002
32. Parajuli N, Yuan Y, Zheng X, Bedja D, Cai Z. Phosphatase PTEN is critically involved in post-myocardial infarction remodeling through the Akt/interleukin-10 signaling pathway. *Basic Res Cardiol*. 2012;107(2):248. doi:10.1007/s00395-012-0248-6
33. Bendeck M. Macrophage matrix metalloproteinase-9 regulates angiogenesis in ischemic muscle. *Circ Res*. 2004;94(2):138–139. doi:10.1161/01.RES.0000117525.23089.1A
34. Xu J, Rodriguez D, Petitclerc E, et al. Proteolytic exposure of a cryptic site within collagen type IV is required for angiogenesis and tumor growth in vivo. *J Cell Biol*. 2001;154(5):1069–1079. doi:10.1083/jcb.200103111
35. Johnson C, Sung H, Lessner S, Fini M, Galis Z. Matrix metalloproteinase-9 is required for adequate angiogenic revascularization of ischemic tissues: potential role in capillary branching. *Circ Res*. 2004;94(2):262–268. doi:10.1161/01.RES.0000111527.42357.62
36. DeLeon-Pennell K, de Castro Brás L, Iyer R, et al. P. gingivalis lipopolysaccharide intensifies inflammation post-myocardial infarction through matrix metalloproteinase-9. *J Mol Cell Cardiol*. 2014;76:218–226. doi:10.1016/j.yjmcc.2014.09.007
37. Kolaczowska E, Kubes P. Neutrophil recruitment and function in health and inflammation. *Nat Rev Immunol*. 2013;13(3):159–175.
38. Hori Y, Kunihiro S, Sato S, et al. Doxycycline attenuates isoproterenol-induced myocardial fibrosis and matrix metalloproteinase activity in rats. *Biol Pharm Bull*. 2009;32(10):1678–1682. doi:10.1248/bpb.32.1678
39. Fana X, Zhu H, Wu X, Yan J, Xu J, Wang D. Effects of doxycycline on cx43 distribution and cardiac arrhythmia susceptibility of rats after myocardial infarction. *Iran J Pharm Res*. 2014;13(2):613–621.
40. Albrengues J, Shields M, Ng D, et al. Neutrophil extracellular traps produced during inflammation awaken dormant cancer cells in mice. *Science (New York, NY)*. 2018;361(6409):eaao4227. doi:10.1126/science.aao4227
41. Herich S, Schneider-Hohendorf T, Rohlmann A, et al. Human CCR5high effector memory cells perform CNS parenchymal immune surveillance via GZMK-mediated transendothelial diapedesis. *Brain*. 2019;142(11):3411–3427. doi:10.1093/brain/awz301
42. Zhang W, Song J, Zhang X, et al. Salvianolic acid A attenuates ischemia reperfusion induced rat brain damage by protecting the blood brain barrier through MMP-9 inhibition and anti-inflammation. *Chin J Nat Med*. 2018;16(3):184–193. doi:10.1016/S1875-5364(18)30046-3
43. Eghbalzadeh K, Georgi L, Louis T, et al. Compromised anti-inflammatory action of neutrophil extracellular traps in PAD4-deficient mice contributes to aggravated acute inflammation after myocardial infarction. *Front Immunol*. 2019;10:2313. doi:10.3389/fimmu.2019.02313
44. Huang P, Wang L, Li Q, et al. Atorvastatin enhances the therapeutic efficacy of mesenchymal stem cells-derived exosomes in acute myocardial infarction via up-regulating long non-coding RNA H19. *Cardiovasc Res*. 2020;116(2):353–367.

45. Gray R, Cantwell M, Coleman H, et al. Evaluation of PTGS2 expression, PIK3CA mutation, aspirin use and colon cancer survival in a Population-Based Cohort Study. *Clin Transl Gastroenterol.* **2017**;8(4):e91. doi:10.1038/ctg.2017.18
46. Ge Z, Zhu X, Wang B, et al. MicroRNA-26b relieves inflammatory response and myocardial remodeling of mice with myocardial infarction by suppression of MAPK pathway through binding to PTGS2. *Int J Cardiol.* **2019**;280:152–159. doi:10.1016/j.ijcard.2018.12.077
47. Shirakawa K, Endo J, Kataoka M, et al. IL (interleukin)-10-STAT3-galectin-3 axis is essential for osteopontin-producing reparative macrophage polarization after myocardial infarction. *Circulation.* **2018**;138(18):2021–2035. doi:10.1161/CIRCULATIONAHA.118.035047
48. Morange P, Saut N, Alessi M, et al. Association of plasminogen activator inhibitor (PAI)-1 (SERPINE1) SNPs with myocardial infarction, plasma PAI-1, and metabolic parameters: the HIFMECH study. *Arterioscler Thromb Vasc Biol.* **2007**;27(10):2250–2257. doi:10.1161/ATVBAHA.107.149468
49. Xu J, Li W, Bao X, et al. Association of putative functional variants in the PLAUI gene and the PLAUR gene with myocardial infarction. *Clin Sci.* **2010**;119(8):353–359. doi:10.1042/CS20100151
50. Wang N, Liu C, Wang X, et al. Hyaluronic acid oligosaccharides improve myocardial function reconstruction and angiogenesis against myocardial infarction by regulation of macrophages. *Theranostics.* **2019**;9(7):1980–1992. doi:10.7150/thno.31073
51. Gupta R, Liu L, Zhang X, et al. IL-10 provides cardioprotection in diabetic myocardial infarction via upregulation of Heme clearance pathways. *JCI Insight.* **2020**;5(17). doi:10.1172/jci.insight.133050

## Clinical Interventions in Aging

Dovepress

### Publish your work in this journal

Clinical Interventions in Aging is an international, peer-reviewed journal focusing on evidence-based reports on the value or lack thereof of treatments intended to prevent or delay the onset of maladaptive correlates of aging in human beings. This journal is indexed on PubMed Central, MedLine, CAS, Scopus and the Elsevier

Bibliographic databases. The manuscript management system is completely online and includes a very quick and fair peer-review system, which is all easy to use. Visit <http://www.dovepress.com/testimonials.php> to read real quotes from published authors.

Submit your manuscript here: <https://www.dovepress.com/clinical-interventions-in-aging-journal>