

Central Sensitization-Related Changes in Brain Function Activity in a Rat Endometriosis-Associated Pain Model [Corrigendum]

Zheng P, Jia S, Guo D, et al. *J Pain Res.* 2020;13:95–107.

During the final editing stages of manuscript preparation, the authors mistakenly repeated the Pain Cg1 and Tha images used in Figure 6 on page 103. The correct Figure 6 is shown below.

The authors confirmed the average H-score results were obtained and calculated from the correct immunohistochemistry slice images and the corrected image does not impact the findings of the study.

The authors apologize for this error.

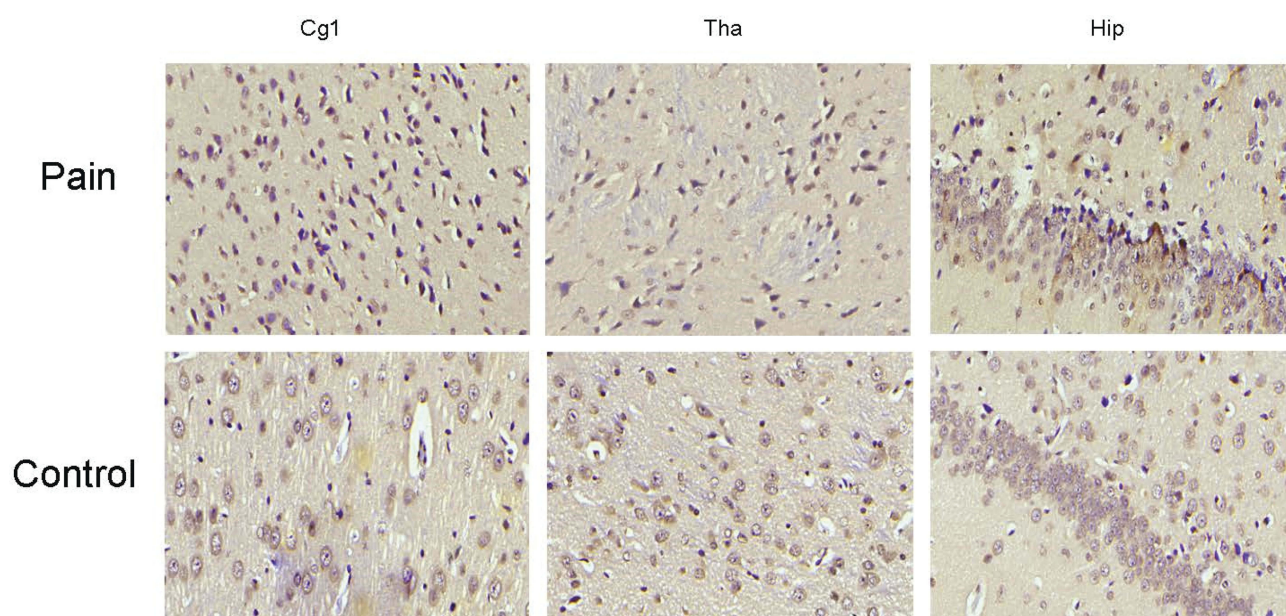


Figure 6 The expression of TRPV1 in IHC. TRPV1 is expressed in the cytoplasm and nucleus of central nervous system tissues and overexpressed in apoptotic neurons and partial Nissl body. However, the staining of TRPV1 in pain group is stronger (deep brown color) than control in the anterior cingulate cortex, hippocampus. There is no significant difference in thalamus.