

Prognostic Significance of the Preoperative Lymphocyte to Monocyte Ratio in Patients with Gallbladder Carcinoma

This article was published in the following Dove Press journal:
Cancer Management and Research

Weiyu Xu^{1,*}
Xiaoqian Wu^{2,*}
Xuezhu Wang^{2,*}
Si Yu²
Gang Xu²
Jianping Xiong³
Junwei Zhang²
Xinting Sang²
Yongchang Zheng²
Wei Liu¹

¹Department of General Surgery, Beijing Friendship Hospital, Capital Medical University, Beijing 100050, People's Republic of China; ²Department of Liver Surgery, Peking Union Medical College Hospital, Chinese Academy of Medical Sciences and Peking Union Medical College (CAMS & PUMC), Beijing 100730, People's Republic of China; ³Department of Interventional Radiology, Beijing Friendship Hospital, Capital Medical University, Beijing 100050, People's Republic of China

*These authors contributed equally to this work

Correspondence: Yongchang Zheng
Department of Liver Surgery, Peking Union Medical College Hospital, Chinese Academy of Medical Sciences and Peking Union Medical College (CAMS & PUMC), 1 Shuaifuyuan, Wangfujing, Beijing 100730, People's Republic of China
Email zhengyc_pumc@163.com

Wei Liu
Department of Human Anatomy, Histology and Embryology, Institute of Basic Medical Sciences, Chinese Academy of Medical Sciences, 9 Dongdan Santiao, Dongcheng District, Beijing 100005, People's Republic of China
Email liuwei@ibms.cams.cn

Background: This study was designed to investigate the prognostic value of the lymphocyte to monocyte ratio (LMR) in patients with gallbladder carcinoma (GBC).

Patients and Methods: We retrospectively enrolled 154 consecutive GBC patients from 2005 to 2017 in this study. The LMR of preoperative blood samples was calculated by dividing the lymphocyte count by the monocyte count. A receiver operating characteristic (ROC) curve was employed to identify the optimal cut-off value of the LMR in the determination of overall survival (OS). The Kaplan–Meier method was utilized to assess OS, and the Log rank test was employed to compare survival differences. Univariate and multivariate Cox regression analyses were conducted to detect independent prognostic indicators.

Results: The optimal cut-off point for the LMR was 4.76 according to the ROC curve. Patients ≤ 60 years old with an LMR ≤ 4.76 experienced significantly worse OS than those with an LMR > 4.76 (hazard ratio (HR): 0.399, 95% confidence interval (CI): 0.265–0.602, $P < 0.001$); however, the prognostic value of the LMR was not determined in patients > 60 years old or among the entire study cohort (both $P > 0.05$). Significantly poorer OS was observed in patients > 60 years with an LMR ≤ 4.21 compared to those with an LMR > 4.21 (HR: 1.830, 95% CI: 1.129–2.967, $P = 0.014$). Multivariate Cox regression analysis indicated that both the high and low LMR cut-off values were independent risk factors for OS (HR: 0.272, 95% CI: 0.105–0.704, $P = 0.007$; HR: 0.544, 95% CI: 0.330–0.895, $P = 0.017$).

Conclusion: The LMR is an independent prognostic indicator for GBC patients, the cut-off value of which is age dependent.

Keywords: gallbladder cancer, lymphocyte to monocyte ratio, LMR, survival, prognosis, biomarker

Introduction

Gallbladder cancer (GBC), originating from the bile duct epithelium, ranks first in the biliary tract and sixth in the gastrointestinal tract in terms of malignancy incidence, accounting for 80–95% of all biliary tract malignancies.^{1,2} Due to its profound aggressiveness and the absence of specific symptoms during the early stage of disease, the poor prognosis of GBC remains a challenge despite great progress in surgical intervention as well as adjuvant chemotherapy. The majority of GBCs are unresectable at initial presentation. The 5-year survival rate of GBC patients is only approximately 5%, and their overall median survival time is less than 1 year.^{3,4} At present, the UICC tumor node metastasis (TNM) staging classification (7th edition) is the most reliable approach

for prognostic progression and is widely applied in clinical practice. Nevertheless, the prognosis varies greatly even among patients with the same TNM stage. To this end, it is necessary to detect more reliable indicators to accurately predict tumor recurrence and patient survival.

The systemic inflammatory response is critically involved in the pathogenesis and progression of multiple malignancies.^{5,6} On the one hand, cells involved in the inflammatory process can generate proangiogenic molecules as well as inflammatory mediators, thereby creating a procancer microenvironment that enhances vascular invasion but suppresses the host immune response.⁵⁻⁷ On the other hand, tumors are capable of releasing cytokines to affect the activity of blood cells related to inflammation and immunity, such as monocytes, lymphocytes, neutrophils and platelets.^{8,9} As a marker of the systemic inflammatory response, the correlation between the lymphocyte to monocyte ratio (LMR), which is calculated as a simple ratio of total lymphocytes and total monocytes, and patient survival has recently been investigated in various types of cancer.¹⁰⁻¹⁷ As a result, most reports have suggested that the LMR is an independent risk factor for malignancy, whereas a few studies¹⁸⁻²⁰ have suggested that either the LMR harbors no prognostic significance for malignant tumors or that the prognostic significance of the LMR should be judged on a situational basis.

To our knowledge, there have been no reports to date concerning the prognostic value of the LMR in GBC patients. Hence, the aim of our study was to evaluate the role of the preoperative peripheral blood LMR on the long-term postoperative outcomes of GBC patients.

Patients and Methods

Patient Enrollment

In total, 154 GBC patients undergoing surgery at the Department of Liver Surgery at Peking Union Medical Hospital (PUMH) between January 2005 and May 2017 were enrolled in this retrospective study. Eligible subjects were included according to the following criteria: 1) age >18 years old; (2) histologically confirmed GBC; (3) no adjuvant chemotherapy or radiotherapy prior to gallbladder resection; and (4) performance status of 0 or 1. The exclusion criteria were as follows: (1) unavailable pretreatment hematologic parameters or loss during follow-up; (2) distant metastasis at the initial visit; (3) presence of other types of cancer; (4) complications with an active infection

or any hematologic disease; or (5) medication with any immunosuppressive agent.

Data Collection

Patient demographics and clinicopathological characteristics, including age, sex, medical comorbidities, complete blood cell count, liver function parameters, CA199 value, histological differentiation, pathological type, T stage, lymph node involvement, distant metastasis, TNM stage, margin status, and maximal tumor diameter, were extracted from the clinical records by one researcher and reviewed by another researcher. Histopathological as well as clinical stages were determined by postoperative histopathological results and clinical evaluations according to the AJCC TNM stage (8th edition) or the UICC TNM classification. The preoperative lymphocytes and monocytes in peripheral blood were isolated from the complete peripheral blood. Moreover, the LMR was defined by dividing the lymphocyte count by the monocyte count. The definition of jaundice was a serum bilirubin concentration greater than 34.2 $\mu\text{mol/L}$.

Ethical Considerations

The current study conformed to the provisions of the Declaration of Helsinki and gained approval from the Medical Ethics Committee at Peking Union Medical College Hospital of Chinese Academy of Medical Sciences and PUMC (CAMS & PUMC). All subjects were well informed of the investigational property of this study and signed written informed consent.

LMR

Preoperative blood specimens were collected after diagnosis and before surgery. A Sysmex XE-5000 automated hematology analyzerTM (Sysmex, Kobe, Japan) was employed to analyze the differential white blood cell count in line with the manufacturer's instructions. The LMR was calculated as described in the data collection section.

Treatment and Follow-Up

Radical cholecystectomy or palliative cholecystectomy was performed for each eligible GBC patient. Follow-up was conducted either by an outpatient visit or by a telephone interview, which was performed every three months during the first two years, every six months during the next three years, and annually after five years. The follow-up period was from the date of surgery to the date

of either death or the last follow-up. Follow-up data of all enrolled patients were available.

Statistical Analysis

Continuous data are shown as the mean \pm standard deviation for normally distributed data (Kolmogorov–Smirnov test, $P > 0.05$) and as the median (min–max) for abnormally distributed data. Categorical data are shown as frequencies and percentages. The χ^2 test or Fisher's exact test was employed to determine the correlation of qualitative data with the LMR, whereas an independent Student's t -test was utilized to analyze quantitative data. Receiver operating characteristic (ROC) curve analysis was performed to determine the optimal cut-off values for the LMR. Overall survival (OS) was defined from the date of surgery to the date of death. OS and survival curves were plotted as Kaplan–Meier curves by using the Log rank test. The multivariate Cox regression model was carried out to evaluate the hazard ratios (HRs). SPSS version 24.0 (IBM Corp., Armonk, NY) was used for statistical analysis. A two-sided P value < 0.05 was considered statistically significant.

Results

Optimal Cut-Off Value of the Continuous LMR for Survival Analysis

An ROC curve for OS was plotted to verify the optimal cut-off value for the continuous LMR (Figure 1). As shown in Figure 1, the area under the curve (AUC) was recorded as 0.701 (95% CI: 0.618–0.785), and the optimal LMR cut-off value for OS was 4.76, with the highest sensitivity and specificity being 0.647 and 0.721, respectively. Based on this value, there were 86 patients (55.8%) with an LMR ≤ 4.76 and 68 patients (44.2%) with an LMR > 4.76 (Table 1).

Patient Baseline Characteristics

The median follow-up time was 17 months. There were 103 patients who died during the follow-up period, with an estimated median OS duration of 14.5 months (range: 0.5–153.0 months). The 1-year and 2-year survival rates were 55.8% and 35.7%, respectively. A total of 154 patients with primary GBC were included in our study, among whom 63 (40.9%) were male and 91 (59.1%) were female. The median age at diagnosis was 64 years (range: 29–85 years), and 98 (63.6%) patients were > 60

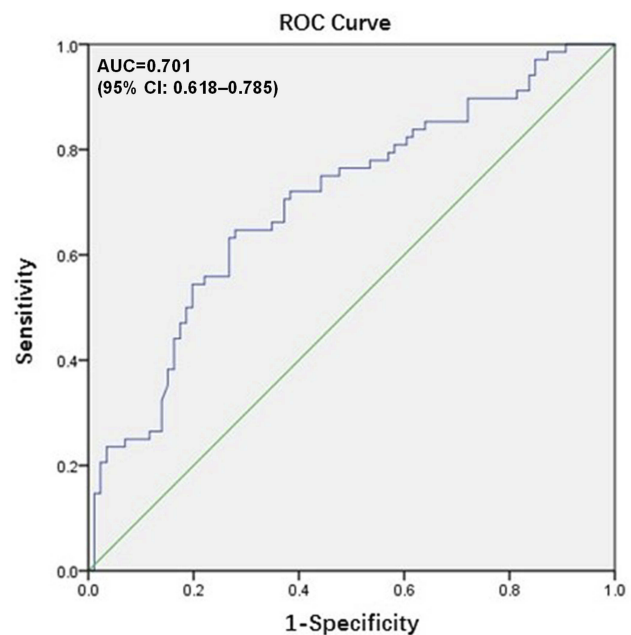


Figure 1 Receiver operating characteristics curve (ROC) analysis based on LMR for OS. The area under the ROC curve (AUC) indicates the diagnostic power of preoperative LMR. In this model, the optimum cut-off point for LMR was 4.76, AUC was 0.701 (95% CI: 0.618–0.785), with a sensitivity of 0.647 and a specificity of 0.721 by the Youden index.

Abbreviations: OS, overall survival; CI, confidence interval; LMR, lymphocyte to monocyte ratio.

years old. A total of 38 (24.7%) patients had a diagnosis of diabetes before surgery, and 75 (48.7%) had a history of gallstones before surgery. One hundred fifty patients (97.4%) were pathologically diagnosed with adenocarcinoma carcinoma, 3 (1.9%) with adenosquamous cell carcinoma and 1 (0.6%) with papillary carcinoma. Ninety-four (61.0%) patients were histologically diagnosed with moderate or well differentiated disease, and 60 (39.0%) were diagnosed with poorly differentiated disease. There were 58 (37.7%) patients with a positive resection margin. According to the TNM staging methods, 16 (10.4%) patients were diagnosed with stage 0 or I tumors, 16 (10.4%) with stage IIA–IIB tumors, 92 (59.7%) with stage IIIA–IIIB tumors, and 30 (19.5%) with stage IVA–IVB tumors. The detailed baseline characteristics of the patients are listed in Table 1.

Correlations Between the Preoperative LMR and Clinicopathological Factors

Based on the cut-off value, all patients were dichotomized into the low value group or the high value group. The characteristics of patients in the high and low LMR groups were compared (Table 2). We found a significant

Table 1 Baseline Characteristics of 154 Patients Who Underwent Potential Curative Cholecystectomy

Characteristic	Patients (n = 154) n (%)
Age (years)	64 (29–85)
≤60	56 (36.4%)
>60	98 (63.6%)
Sex	
Male	63 (40.9%)
Female	91 (59.1%)
Cholelithiasis	
Absent	79 (51.3%)
Present	75 (48.7%)
Diabetes	
Absent	116 (75.3%)
Present	38 (24.7%)
Jaundice	
Absent	129 (83.8%)
Present	25 (8.9%)
Blood Groups	
A	43 (27.9%)
B	56 (36.4%)
AB	9 (5.8%)
O	46 (29.9%)
Pathological Types	
Adenosquamous carcinoma	3 (1.9%)
Adenocarcinoma	150 (97.4%)
Papilocarcinoma	1 (0.6%)
Degree of Differentiation	
Poor	60 (39.0%)
Moderate–well	94 (61.0%)
Resection Margin Status	
Negative	96 (62.3%)
Positive	58 (37.7%)
Maximum Tumor Diameter(cm)	3 (0.2–13)
≤2.45	68 (44.2%)
>2.45	86 (55.8%)
T Stage	
Tis–T1a	10 (6.5%)
T1b–T2b	29 (18.8%)
T3	103 (66.9%)
T4	12 (7.8%)
N Stage	
0	98 (63.6%)
1	47 (30.5%)
2	9 (5.8%)

(Continued)

Table 1 (Continued).

Characteristic	Patients (n = 154) n (%)
Distant Metastasis	
Absent	142 (92.2%)
Present	12 (7.8%)
TNM Stage	
0–I stage	16 (10.4%)
IIA–IIB stage	16 (10.4%)
IIIA–IIIB stage	92 (59.7%)
IVA–IVB stage	30 (19.5%)
CA199	69.3 U/mL (0.6–10.524 U/mL)
≤39	66 (42.9%)
>39	88 (57.1%)
LMR	4.31 (0.20–12.13)
≤4.76	86 (55.8%)
>4.76	68 (44.2%)

relationship between an elevated LMR and sex ($P=0.032$), resection margin ($P<0.001$), degree of differentiation ($P=0.013$), N stage ($P=0.003$), T stage ($P<0.001$), CA199 value ($P=0.033$) and TNM stage ($P<0.001$). In contrast, no significant associations were observed between the LMR and age, gallstone history, comorbid diabetes, pathological type, jaundice, distant metastasis, ABO blood group, or tumor size ($P>0.05$).

Comparison of the Clinicopathological Characteristics and LMR in Relation to OS Postoperation

In the univariate Cox analysis, resection margin (HR: 3.683, 95% CI: 2.468–5.496, $P<0.001$), distant metastasis (HR: 2.550, 95% CI: 1.388–4.684, $P=0.003$), jaundice (HR: 2.598, 95% CI: 1.644–4.106, $P<0.001$), CA199 value (HR: 3.125, 95% CI: 2.010–4.858, $P<0.001$), lymph node metastasis ($P<0.001$), degree of differentiation (HR: 1.527, 95% CI: 1.031–2.261, $P=0.035$), T stage ($P<0.001$), TNM stage ($P<0.001$) and LMR (HR: 0.399, 95% CI: 0.265–0.602, $P<0.001$) were significant prognostic factors for OS (Table 3), whereas sex, age, gallstone history, comorbid diabetes, pathological type, ABO blood group and maximum tumor diameter were not significant predictors of OS ($P>0.05$; Table 3). In the multivariate Cox regression analysis, age (HR: 1.533, 95% CI: 1.015–2.374, $P=0.042$), margin status (HR: 2.350, 95% CI: 1.537–3.595,

Table 2 Correlation Between LMR and Clinicopathological Characteristics in GBC Patients

Characteristics	LMR		P value
	≤4.76	>4.76	
Age (Years)			
≤60	30 (19.5%)	26 (16.9%)	0.737
>60	56 (36.4%)	42 (27.3%)	
Sex			
Male	42 (27.3%)	21 (13.6%)	0.032
Female	44 (28.6%)	47 (30.5%)	
Cholecystolithiasis			
Absent	48 (31.2%)	31 (20.1%)	0.256
Present	38 (24.7%)	37 (24.0%)	
Diabetes			
Absent	63 (40.9%)	53 (34.4%)	0.574
Present	23 (14.9%)	15 (9.7%)	
Jaundice			
Absent	69 (44.8%)	60 (39.0%)	0.196
Present	17 (11.0%)	8 (5.2%)	
Blood Groups			
A	24 (15.6%)	19 (12.3%)	0.105
B	33 (21.4%)	23 (14.9%)	
AB	8 (5.2%)	1 (0.6%)	
O	21 (13.6%)	25 (16.2%)	
Pathological Types			
Adenosquamous carcinoma	2 (1.3%)	1 (0.6%)	0.622
Adenocarcinoma	83 (53.9%)	67 (43.5%)	
Papilocarcinoma	1 (0.6%)	0 (0.0%)	
Degree of Differentiation			
Poor	41 (26.6%)	19 (12.3%)	0.013
Moderate-well	45 (29.2%)	49 (31.8%)	
Resection Margin Status			
Negative	39 (25.3%)	57 (37.0%)	<0.001
Positive	47 (30.5%)	11 (7.1%)	
Maximum Tumor Diameter(cm)			
≤2.45	33 (21.4%)	35 (22.7%)	0.141
>2.45	53 (34.4%)	33 (21.4%)	
T Stage			
Tis-T1a	2 (1.3%)	8 (5.2%)	<0.001
T1b-T2b	7 (4.5%)	22 (14.3%)	
T3	66 (42.9%)	37 (24.0%)	
T4	11 (7.1%)	1 (0.6%)	
N Stage			
N0	45 (29.2%)	53 (34.4%)	0.003
N1	33 (21.4%)	14 (9.1%)	
N2	8 (5.2%)	1 (0.6%)	
Distant Metastasis			
Absent	78 (50.6%)	64 (41.6%)	0.551
Present	8 (5.2%)	4 (2.6%)	

(Continued)

Table 2 (Continued).

Characteristics	LMR		P value
	≤4.76	>4.76	
TNM Stage			
0-I stage	3 (1.9%)	13 (8.4%)	<0.001
IIA-IIIB stage	4 (2.6%)	12 (7.8%)	
IIIA-IIIB stage	55 (35.7%)	37 (24.0%)	
IVA-IVB stage	24 (15.6%)	6 (3.9%)	
CA199			
≤39	30 (19.5%)	36 (23.4%)	0.033
>39	56 (36.4%)	32 (20.8%)	

P<0.001), TNM stage (P=0.008) and CA199 (HR: 1.712, 95% CI: 1.074–2.727, P<0.001) were independent risk factors for poor OS (Table 4).

Subgroup Analysis for Prognostic Factors Influencing OS

When we divided the GBC patients according to age, we found that for the younger subgroup (≤60 years old), the LMR (HR: 0.168, 95% CI: 0.070–0.400, P<0.001), margin status (HR: 4.428, 95% CI: 2.117–9.261, P<0.001), jaundice (HR: 3.231, 95% CI: 1.480–7.053, P=0.003), CA199 value (HR: 4.722, 95% CI: 2.097–10.633, P<0.001), N stage (P=0.017), T stage (P=0.007) and TNM stage (P=0.017) were significant prognostic factors for OS in the univariate analysis (Table 5). A CA199 value >39 (HR: 2.671, 95% CI: 1.088–6.588, P=0.032) and an LMR ≤4.76 (HR: 0.272, 95% CI: 0.105–0.704, P=0.007) were independent risk factors for poor OS in the multivariate analysis (Table 5). The survival curve stratified by the LMR showed that OS was longer in GBC patients with an LMR >4.76 than in those with an LMR ≤4.76 (Figure 2). For the older subgroup (>60 years old), the univariate analysis indicated that the LMR (HR: 0.546, 95% CI: 0.337–0.885, P=0.014), margin status (HR: 3.627, 95% CI: 2.224–5.917, P<0.001), distant metastasis (HR: 2.934, 95% CI: 1.480–5.815, P=0.002), jaundice (HR: 2.279, 95% CI: 1.288–4.033, P=0.005), CA199 value (HR: 2.417, 95% CI: 1.431–4.084, P=0.001), N stage (P=0.007), T stage (P=0.027) and TNM stage (P<0.001) were significant prognostic factors for OS (Table 6). A CA199 value >39 (HR: 2.137, 95% CI: 1.250–3.651, P=0.005), margin status (HR: 3.299, 95% CI: 1.985–5.483, P<0.001), distant metastasis (HR: 3.117, 95% CI: 1.554–6.256, P=0.001), and degree of differentiation (HR: 1.726, 95% CI: 1.048–2.843, P=0.032) were independent risk factors for poor OS in the multivariate analysis (Table 6).

Table 3 Univariate Analysis of Overall Survival in GBC Patients

Characteristics	HR(95% CI)	P value
Age (years) ≤60 >60	1.473 (0.973–2.230)	0.067
Sex Male Female	0.995 (0.670–1.477)	0.981
Cholecystolithiasis Absent Present	1.198 (0.814–1.764)	0.360
Diabetes Absent Present	1.028 (0.651–1.623)	0.906
Jaundice Absent Present	2.598 (1.644–4.106)	<0.001
Blood groups A B AB O	————	0.113
Pathological types Adenosquamous carcinoma Adenocarcinoma Papilocarcinoma	————	0.165
Degree of differentiation Poor Moderate-well	1.527 (1.031–2.261)	0.035
Resection margin status Negative Positive	3.683 (2.468–5.496)	<0.001
Maximum tumor diameter(cm) ≤2.45 >2.45	1.101 (0.744–1.630)	0.631
T stage Tis-T1a T1b-T2b T3 T4	————	<0.001
N stage 0 1 2	————	<0.001

(Continued)

Table 3 (Continued).

Characteristics	HR(95% CI)	P value
Distant metastasis Absent Present	2.550 (1.388–4.684)	0.003
TNM stage 0-I stage IIA-IIIB stage IIIA-IIIB stage IVA-IVB stage	————	<0.001
CA199(U/mL) ≤39 >39	3.125 (2.010–4.858)	<0.001
LMR ≤4.76 >4.76	HR0.399 95% CI (0.265–0.602)	<0.001

When we divided GBC patients according to TNM stage, we found that the LMR was not an independent risk factor for patients with early-stage (0/I/II) ($P=0.994$) or advanced-stage (III/IV stage) disease ($P=0.147$) based on the multivariate Cox regression analysis.

LMR Cut-Off Value in GBC Patients >60 Years Old and Its Prognostic Significance in This Patient Subgroup

Because the LMR cut-off value of 4.76 was not significantly associated with OS ($P=0.099$) in patients >60 years old, we

Table 4 Multivariate Analysis for Overall Survival in GBC Patients

Characteristics	HR(95% CI)	Wald	p value
Resection margin status Negative Positive	2.350 (1.537–3.595)		<0.001
TNM stage IIA-IIIB stage/0-I stage IIIA-IIIB stage/0-I stage IVA -IVB stage/0-I stage	1.529 (0.363–6.440) 4.300 (1.320–14.013) 5.899 (1.709–20.359)	11.955 0.335 5.856 7.884	0.005 0.563 0.016 0.005
Age (years) ≤60 >60	1.553 (1.015–2.374)		0.042
CA199 (U/mL) ≤39 >39	1.712 (1.074–2.727)		0.024

Table 5 Univariate and Multivariate Analysis for Overall Survival in GBC Patients with Age ≤60 Years

Univariate Analysis		
Characteristics	HR(95% CI)	P value
Sex		
Male	0.825 (0.415–1.640)	0.583
Female		
Cholecystolithiasis		
Absent	0.767 (0.376–1.567)	0.467
Present		
Diabetes		
Absent	0.880 (0.336–2.303)	0.794
Present		
Jaundice		
Absent	3.231 (1.480–7.053)	0.003
Present		
Blood groups		
A	—————	0.378
B		
AB		
O		
Pathological types		
Adenosquamous carcinoma	—————	0.058
Adenocarcinoma		
Papillocarcinoma		
Degree of differentiation	1.475 (0.721–3.018)	0.287
Poor		
Moderate-Well		
Resection margin status		
Negative	4.428 (2.117–9.261)	<0.001
Positive		
Maximum tumor diameter (cm)		
≤2.45	1.274 (0.636–2.552)	0.494
>2.45		
T stage		
Tis-T1a	—————	0.007
T1b-T2b		
T3		
T4		
N stage		
0	—————	0.017
1		
2		
Distant metastasis		
Absent	1.412 (0.335–5.948)	0.639
Present		
TNM stage		
0-I stage	—————	0.017
IIA-IIIB stage		

(Continued)

Table 5 (Continued).

Univariate Analysis		
Characteristics	HR(95% CI)	P value
IIIA-IIIB stage		
IVA-IVB stage		
CA199	4.722 (2.097–10.633)	<0.001
≤39		
>39		
LMR	0.168 (0.070–0.400)	<0.001
≤4.76		
>4.76		
Multivariate Analysis		
Characteristics	HR(95% CI)	P value
CA199	2.671 (1.088–6.588)	0.032
≤39		
>39		
LMR	0.272 (0.105–0.704)	0.007
≤4.76		
>4.76		

identified a new cut-off value for elderly patients according to the ROC curve for OS. As shown in [Figure 3](#), the AUC was 0.708 (95% CI: 0.606–0.811), and the optimal LMR cut-off value for OS was 4.21, with the highest sensitivity and specificity being 0.714 and 0.653, respectively. In the multivariate analysis, an LMR ≤4.21 (HR: 0.544, 95% CI: 0.330–0.895, P=0.017) margin status (HR: 3.179, 95% CI: 1.904–5.306, P<0.001), distant metastasis (HR: 3.262, 95% CI: 1.620–6.567, P=0.001) and CA199 value >39 (HR: 2.057, 95% CI: 1.221–3.490, P=0.007) were independent risk factors for unfavorable OS ([Table 7](#)). The survival curve stratified by the LMR showed that OS was longer in GBC patients with an LMR >4.21 than in patients with an LMR ≤4.21 ([Figure 4](#)).

Discussion

To the best of our knowledge, this is the first retrospective study to evaluate the prognostic significance of the LMR in patients with GBC who underwent potentially curative resection and to describe this relationship with respect to the age of the GBC patients. In the present study, we found that the prognostic significance of the LMR in GBC patients was age dependent. In patients ≤60 years old, LMR values ≤4.76 were correlated with unfavorable OS, but this cut-off value was not associated with a difference in OS in patients >60 years old. However, LMR values

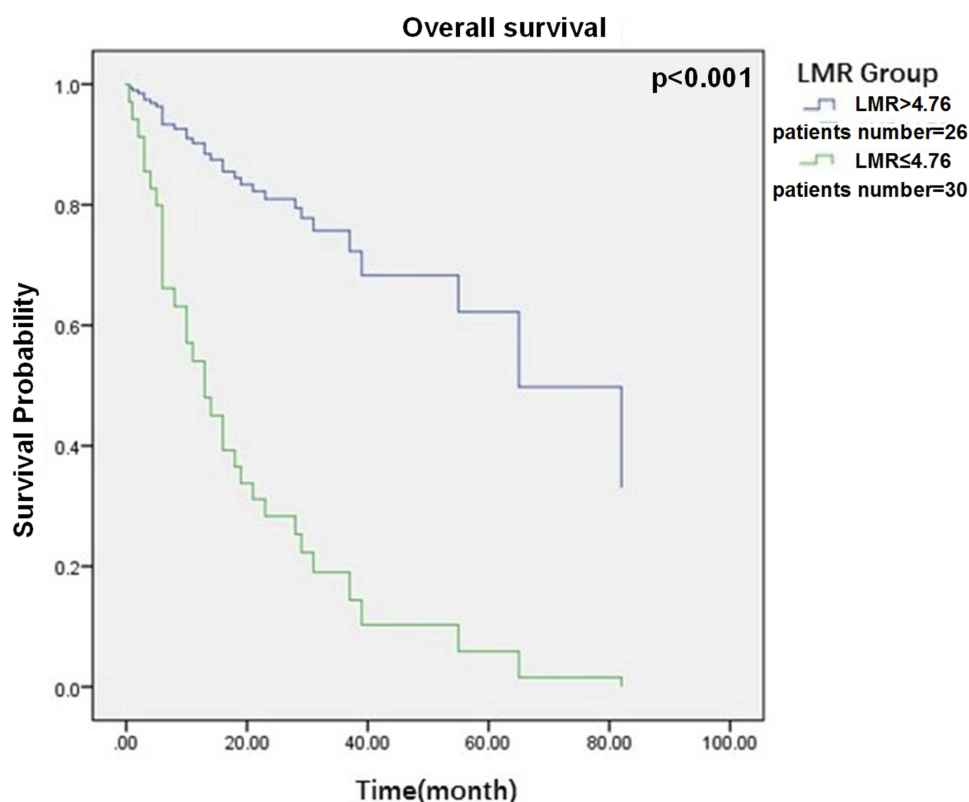


Figure 2 Survival curve according to the presence of preoperative LMR. Data compares LMR>4.76 vs.≤4.76 group ($P<0.05$).

Abbreviation: LMR, lymphocyte to monocyte ratio.

≤4.21 were associated with inferior OS in patients >60 years old. The optimal cut-off value in elderly patients was significantly lower than that in nonelderly patients.

The LMR is an inflammation- and immunity-related biomarker defined as the ratio of lymphocytes to monocytes (i.e., lymphocytes divided by monocytes). This ratio reflects both lymphopenia, which results from a weak, insufficient immunologic reaction to the tumor,²¹ and high levels of monocytes and macrophages present in the tumor microenvironment, which support cancer cell invasion, migration, intravasation, and angiogenesis and can even lead to the suppression of the antitumor immune reaction.^{22,23} Therefore, the LMR, which can be easily obtained from a peripheral blood test, is drawing increasing attention as a prognostic marker in multiple cancers.

In contrast to most published studies^{15,24-27} suggesting that the LMR is an independent prognostic factor, our study found that the prognostic value of the LMR is age dependent in GBC patients and that different age subgroups have different cut-off values. A single and

unique LMR cut-off value has no predictive value for the prognosis of patients with GBC. These conclusions were consistent with the results of studies conducted by Wu et al,¹⁸ Koh et al¹⁹ and Giacomelli et al.²⁰ Wu et al reported that the LMR could not predict the prognosis of nonmetastatic rectal cancer patients (HR: 1.034, 95% CI: 0.682–1.566, $P=0.876$) despite its status as an easy obtainable and highly efficient laboratory inflammatory marker. Koh et al¹⁹ described patients with diffuse large B cell lymphoma (DLBCL) and reported conclusions similar to ours, which indicated that the prognostic significance of the LMR in DLBCL patients was age dependent, as the LMR was significantly different between DLBCL patients younger than and at least 70 years of age who received rituximab plus CHOP (R-CHOP) therapy (<30.4 VS <2.36), and the LMR values were significantly lower in the ≥70-year-old group than in the <70-year-old group. Therefore, they suggested different LMR cut-off values to distinguish high-risk and low-risk groups among elderly patients with DLBCL. However, Giacomelli et al²⁰

Table 6 Univariate and Multivariate Analysis for Overall Survival in GBC Patients with Age>60 Years

Univariate Analysis		
Characteristics	HR(95% CI)	P value
Sex		
Male	1.072 (0.659–1.743)	0.780
Female		
Cholecystolithiasis		
Absent	1.396 (0.867–2.249)	0.170
Present		
Diabetes		
Absent	1.006 (0.594–1.702)	0.983
Present		
Jaundice		
Absent	2.279 (1.288–4.033)	0.005
Present		
Blood groups		
A	—————	0.091
B		
AB		
O		
Pathological types		
Adenosquamous carcinoma	2.999 (0.408–22.046)	0.281
Adenocarcinoma		
Papilocarcinoma		
Degree of differentiation		
Poor	1.565 (0.973–2.517)	0.065
Moderate-well		
Resection margin status		
Negative	3.627 (2.224–5.917)	<0.001
Positive		
Maximum tumor diameter(cm)		
≤2.45	1.015 (0.630–1.635)	0.951
>2.45		
T stage		
Tis-T1a	—————	0.027
T1b-T2b		
T3		
T4		
N stage	—————	0.007
0		
1		
2		
Distant metastasis		
Absent	2.934 (1.480–5.815)	0.002
Present		
TNM stage		
0-I stage	—————	<0.001
IIA-IIIB stage		

(Continued)

Table 6 (Continued).

Univariate Analysis		
Characteristics	HR(95% CI)	P value
IIIA-IIIB stage IVA-IVB stage		
CA199 ≤39 >39	2.417 (1.431–4.084)	<0.001
LMR ≤4.76 >4.76	0.546 (0.337–0.885)	0.014
Multivariate Analysis		
Characteristics	HR(95% CI)	P value
Resection margin status Negative Positive	3.299 (1.985–5.483),	<0.001
Degree of differentiation Poor Moderate-well	1.726 (1.048–2.843),	0.032
Distant metastasis Absent Present	3.117 (1.554–6.256),	0.001
CA199 ≤39 >39	2.137 (1.250–3.651),	0.005
LMR ≤4.76 >4.76	—————	0.099

demonstrated that the LMR values were variable during the perioperative period in patients with pancreatic cancer and showed that changes in the LMR during the treatment course could predict OS.

The exact underlying mechanism for this phenomenon is still unclear. These observations are inconsistent with the conception that we usually hold: different subtypes of lymphocytes and monocytes have different effects on tumors. Even the same type of lymphocyte or monocyte exerts different functions. Previous studies have shown that different subtypes of lymphocytes could exert a - positive,²⁸ negative²⁹ or neutral³⁰ influence on nonmetastatic rectal cancer. However, some studies have indicated that monocytes and their progeny can promote³¹ or suppress³² the migration and invasion of tumor cells. Perhaps the unclear relationship among lymphocytes, monocytes and the prognosis of malignant cancers leads

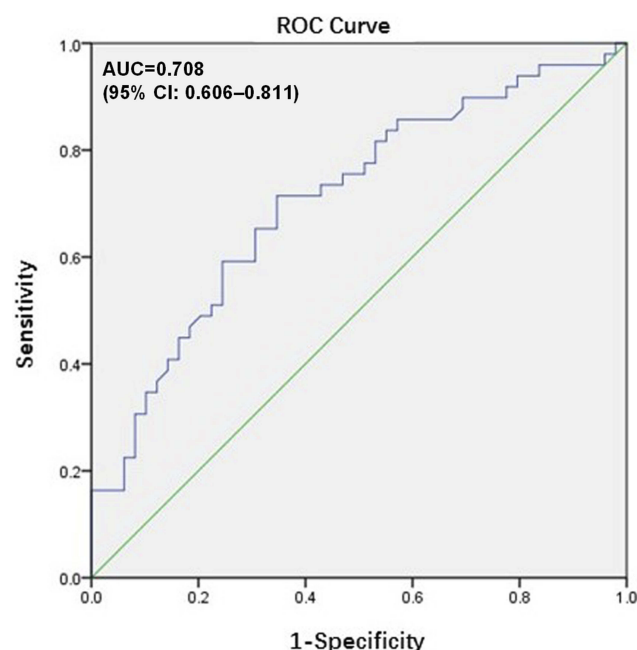


Figure 3 Receiver operating characteristics curve (ROC) analysis based on LMR for OS in patients >60 years old. The area under the ROC curve (AUC) indicates the diagnostic power of preoperative LMR. In this model, the optimum cut-off point for LMR was 4.21, AUC was 0.708 (95% CI: 0.606–0.811), with a sensitivity of 0.714 and a specificity of 0.653 by the Youden index.

Abbreviations: LMR, lymphocyte to monocyte ratio; OS, overall survival; CI, confidence interval.

to the inability of the LMR to effectively predict the prognosis of tumor patients.

When we carefully analyzed and reviewed a meta-analysis by Nishijima et al in 2015³³ regarding the relationship between the LMR and tumors, we found that the optimal LMR cut-off values differed with the average

Table 7 Multivariate Analysis for Overall Survival in GBC Patients with Age>60 Years According to the New Cut-off Value (4.21)

Characteristics	HR(95% CI)	P value
Margin status Negative Positive	HR: 3.179, 95% CI: 1.904–5.306	<0.001
Distant metastasis Absent Present	HR: 3.262, 95% CI: 1.620–6.567	<0.001
CA199(U/mL) ≤39 >39	HR: 2.057, 95% CI: 1.221–3.490	0.007
LMR ≤4.21 >4.21	HR: 0.544, 95% CI: 0.330–0.895	0.017

ages of the study population. Among the included studies, Jiang et al³⁴ reported a prognostic impact of the LMR in patients with nasopharyngeal carcinoma with a median age of 51 years using an LMR cut-off value of 5.22. Chang et al³⁵ reported prognostic significance for the LMR in patients with renal cell carcinoma with a median age of 56 years using an LMR cut-off value of 4.44. Another study conducted by Temraz et al³⁶ described the prognostic significance of the LMR in patients with bladder cancer with a median age of 65 years using the LMR cut-off value of 2.81. The results of the studies listed above, which are consistent with those of our study, indicate that the LMR value is inversely proportional to the median or mean age of the study population.

The cause of this phenomenon may be that aging could affect the volume and function of lymphocytes and monocytes. A previous study³⁷ indicated that the total number of lymphocytes was significantly lower in elderly people than in the overall adult population; however, some studies showed that the number of monocytes was normal³⁸ or even increased³⁹ in elderly people relative to the respective values in normal healthy adults. The reduced lymphocyte count and increased monocyte count can inhibit immune system function, causing tumor cells to migrate, invade and metastasize.

However, there are some limitations to this study. First, this was a single-center retrospective study that lacked prospective data. Second, the sample size was relatively small, which would inevitably generate uncontrolled and unrecognized bias. Third, this study included some recent patients with only a short follow-up period. Therefore, prospective, multicenter studies with a large sample size are needed to further evaluate the clinical applicability and deficiencies of our results.

Conclusions

In conclusion, the findings of our study demonstrate that the prognostic value of the LMR in GBC patients after surgery is age dependent. The optimal cut-off value of the LMR in GBC patients is significantly different between patients ≤60 years old and those >60 years old. Therefore, we recommend different LMR cut-off values according to patient age in future clinical applications. However, the true prognostic value of the LMR in predicting the outcome of GBC patients still requires further validation.

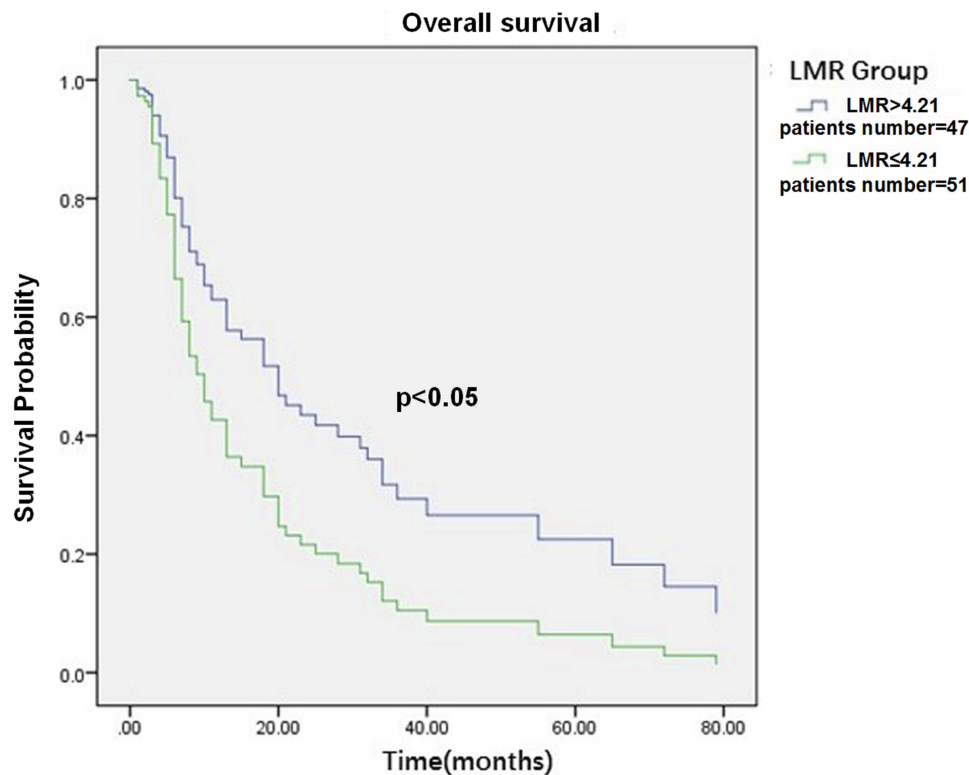


Figure 4 Survival curve according to the presence of preoperative LMR. Data compares LMR > 4.21 vs. ≤ 4.21 group ($P < 0.05$).

Abbreviation: LMR, lymphocyte to monocyte ratio.

Abbreviations

AUC, area under the curve; CAMS & PUMC, Chinese Academy of Medical Sciences and Peking Union Medical College; CI, confidence interval; DLBCL, diffuse large B cell lymphoma; GBC, gallbladder carcinoma; HR, hazard ratio; LMR, lymphocyte to monocyte ratio; OS, overall survival; ROC, receiver operating characteristic; TNM, tumor node metastasis; UICC, The Union for International Cancer Control.

Data Sharing Statement

The datasets used and/or analyzed during the current study are available from the corresponding author on reasonable request.

Ethics and Consent Statement

This study was approved by the hospital medical ethics committee of the Peking Union Medical College Hospital of the Chinese Academy of Medical Sciences and Peking Union Medical College (CAMS & PUMC). Every patient provided written informed consent before enrollment.

Consent for Publication

Written informed consent for publication was obtained.

Author Contributions

(I) Conception and design: W Xu; (II) Administrative support: Y Zheng, W Liu; (III) Provision of study materials or patients: Y Zheng, X Sang; (IV) Collection and assembly of data: X Wu, S Yu, G Xu, J Xiong, J Zhang; (V) Data analysis and interpretation: W Xu, X Wu, X Wang; (VI) Manuscript writing: All authors; (VII) Final approval of manuscript: All authors. All authors contributed to data analysis, drafting and revising the article, gave final approval of the version to be published, and agree to be accountable for all aspects of the work.

Funding

This study was supported by grants from the Beijing Natural Science Foundation (No. L172055), Beijing Municipal Science & Technology Commission research fund (No. Z171100000417004), WBE Liver Fibrosis Foundation (CFHPC 2020021), and Beijing Dongcheng District outstanding talent funding project.

Disclosure

The authors declare that they have no competing interests in this work.

References

- Lin N, Yao Z, Xu M, et al. Long noncoding RNA MALAT1 potentiates growth and inhibits senescence by antagonizing ABI3BP in gallbladder cancer cells. *J Exp Clin Cancer Res*. 2019;38(1):244. doi:10.1186/s13046-019-1237-5
- Hundal R, Shaffer E. Gallbladder cancer: epidemiology and outcome. *Clin Epidemiol*. 2014;6:99–109. doi:10.2147/CLEP.S37357
- Li M, Liu F, Zhang F, et al. Genomic ERBB2/ERBB3 mutations promote PD-L1-mediated immune escape in gallbladder cancer: a whole-exome sequencing analysis. *Gut*. 2019;68(6):1024–1033. doi:10.1136/gutjnl-2018-316039
- Cao Y, Liang H, Zhang F, et al. Prohibitin overexpression predicts poor prognosis and promotes cell proliferation and invasion through ERK pathway activation in gallbladder cancer. *J Exp Clin Cancer Res*. 2016;35(1):68. doi:10.1186/s13046-016-0346-7
- Balkwill F, Mantovani A. Inflammation and cancer: back to Virchow? *Lancet*. 2001;357(9255):539–545. doi:10.1016/S0140-6736(00)04046-0
- Mantovani A, Allavena P, Sica A, et al. Cancer-related inflammation. *Nature*. 2008;454(7203):436–444. doi:10.1038/nature07205
- Grivennikov SI. Immunity, Inflammation, and Cancer. *Cell*. 2010;6(140).
- Lippi G, Meschi T, Nouvenne A, Mattiuzzi C, Borghi L. Neutrophil gelatinase-associated lipocalin in cancer. *Adv Clin Chem*. 2014;64:179–219.
- Del Prete A, Allavena P, Santoro G, et al. Molecular pathways in cancer-related inflammation. *Biochem Med (Zagreb)*. 2011;21(3):264–275. doi:10.11613/BM.2011.036
- Ying H-Q, Deng Q-W, He B-S, et al. The prognostic value of preoperative NLR, d-NLR, PLR and LMR for predicting clinical outcome in surgical colorectal cancer patients. *Med Oncol*. 2014;31(12):305. doi:10.1007/s12032-014-0305-0
- Deng Q, He B, Liu X, et al. Prognostic value of pre-operative inflammatory response biomarkers in gastric cancer patients and the construction of a predictive model. *J Transl Med*. 2015;13(1):66. doi:10.1186/s12967-015-0409-0
- Han L-H, Jia Y-B, Song Q-X, et al. Prognostic significance of pre-operative lymphocyte-monocyte ratio in patients with resectable esophageal squamous cell carcinoma. *Asian Pac J Cancer Prev*. 2015;16(6):2245–2250. doi:10.7314/APJCP.2015.16.6.2245
- Qi Q, Geng Y, Sun M, et al. Clinical implications of systemic inflammatory response markers as independent prognostic factors for advanced pancreatic cancer. *Pancreatol*. 2015;15(2):145–150. doi:10.1016/j.pan.2014.12.004
- Koh YW, Jung SJ, Yoon DH, et al. The absolute lymphocyte to monocyte ratio is associated with poor prognosis in classical Hodgkin lymphoma patients younger than 60 years of age. *Hematol Oncol*. 2015;33(3):133–140. doi:10.1002/hon.2155
- Lin G-N, Peng J-W, Xiao J-J, et al. Prognostic impact of circulating monocytes and lymphocyte-to-monocyte ratio on previously untreated metastatic non-small cell lung cancer patients receiving platinum-based doublet. *Med Oncol*. 2014;31(7):70. doi:10.1007/s12032-014-0070-0
- Anand M, Chodda SK, Parikh PM, et al. Abnormal levels of proinflammatory cytokines in serum and monocyte cultures from patients with chronic myeloid leukemia in different stages, and their role in prognosis. *Hematol Oncol*. 1998;16(4):143–154. doi:10.1002/(SICI)1099-1069(199812)16:4<143::AID-HON628>3.0.CO;2-U
- Hu P, Shen H, Wang G, et al. Prognostic significance of systemic inflammation-based lymphocyte-monocyte ratio in patients with lung cancer: based on a large cohort study. *PLoS One*. 2014;9(10):e108062. doi:10.1371/journal.pone.0108062
- Wu Q-B, Wang M, Hu T, et al. Prognostic role of the lymphocyte-to-monocyte ratio in patients undergoing resection for nonmetastatic rectal cancer. *Medicine (Baltimore)*. 2016;95(44):e4945. doi:10.1097/MD.0000000000004945
- Koh YW, Park C-S, Yoon DH, et al. Should the cut-off values of the lymphocyte to monocyte ratio for prediction of prognosis in diffuse large B-cell lymphoma be changed in elderly patients? *Eur J Haematol*. 2014;93(4):340–348. doi:10.1111/ejh.12354
- Giacomelli I, Scartoni D, Mohammadi H, et al. Does lymphocyte-to-monocyte ratio before, during, or after definitive chemoradiation for locally advanced pancreatic cancer predict for clinical outcomes? *J Gastrointest Oncol*. 2017;8(4):721–727. doi:10.21037/jgo.2017.06.14
- Yoshikawa T, Saito H, Osaki T, et al. Elevated Fas expression is related to increased apoptosis of circulating CD8+ T cell in patients with gastric cancer. *J Surg Res*. 2008;148(2):143–151. doi:10.1016/j.jss.2007.07.011
- Pollard JW. Tumour-educated macrophages promote tumour progression and metastasis. *Nat Rev Cancer*. 2004;4(1):71–78. doi:10.1038/nrc1256
- Condeelis J, Pollard JW. Macrophages: obligate partners for tumor cell migration, invasion, and metastasis. *Cell*. 2006;124(2):263–266. doi:10.1016/j.cell.2006.01.007
- Watanabe R, Tomita N, Itabashi M, et al. Peripheral blood absolute lymphocyte/monocyte ratio as a useful prognostic factor in diffuse large B-cell lymphoma in the rituximab era. *Eur J Haematol*. 2014;92(3):204–210. doi:10.1111/ejh.12221
- Liu T, Fang X-C, Ding Z, et al. Pre-operative lymphocyte-to-monocyte ratio as a predictor of overall survival in patients suffering from osteosarcoma. *FEBS Open Bio*. 2015;5(1):682–687. doi:10.1016/j.fob.2015.08.002
- Marín Hernández C, Piñero Madrona A, Gil Vázquez PJ, et al. Usefulness of lymphocyte-to-monocyte, neutrophil-to-monocyte and neutrophil-to-lymphocyte ratios as prognostic markers in breast cancer patients treated with neoadjuvant chemotherapy. *Clin Transl Oncol*. 2018;20(4):476–483. doi:10.1007/s12094-017-1732-0
- Vassilakopoulos TP, Dimopoulou MN, Angelopoulou MK, et al. Prognostic implication of the absolute lymphocyte to absolute monocyte count ratio in patients with classical hodgkin lymphoma treated with doxorubicin, bleomycin, vinblastine, and dacarbazine or equivalent regimens. *The Oncologist*. 2016;21(3):343–353. doi:10.1634/theoncologist.2015-0251
- Correale P, Rotundo MS, Del Vecchio MT, et al. Regulatory (FoxP3+) T-cell tumor infiltration is a favorable prognostic factor in advanced colon cancer patients undergoing chemo or chemioimmunotherapy. *J Immunother*. 2010;33(4):435–441. doi:10.1097/CJI.0b013e3181d32f01
- Yaqub S, Henjum K, Mahic M, et al. Regulatory T cells in colorectal cancer patients suppress anti-tumor immune activity in a COX-2 dependent manner. *Cancer Immunol Immunother*. 2008;57(6):813–821. doi:10.1007/s00262-007-0417-x
- Sinicrope FA, Rego RL, Ansell SM, et al. Intraepithelial effector (CD3+)/regulatory (FoxP3+) T-cell ratio predicts a clinical outcome of human colon carcinoma. *Gastroenterology*. 2009;137(4):1270–1279. doi:10.1053/j.gastro.2009.06.053
- Wilcox RA, Wada DA, Ziesmer SC, et al. Monocytes promote tumor cell survival in T-cell lymphoproliferative disorders and are impaired in their ability to differentiate into mature dendritic cells. *Blood*. 2009;114(14):2936–2944. doi:10.1182/blood-2009-05-220111
- Jensen TO, Schmidt H, Møller HJ, et al. Macrophage markers in serum and tumor have prognostic impact in American Joint Committee on Cancer stage I/II melanoma. *J Clin Oncol*. 2009;27(20):3330–3337. doi:10.1200/JCO.2008.19.9919
- Nishijima TF, Muss HB, Shachar SS, et al. Prognostic value of lymphocyte-to-monocyte ratio in patients with solid tumors: A systematic review and meta-analysis. *Cancer Treat Rev*. 2015;41(10):971–978. doi:10.1016/j.ctrv.2015.10.003

34. Jiang R, Cai X-Y, Yang Z-H, et al. Elevated peripheral blood lymphocyte-to-monocyte ratio predicts a favorable prognosis in the patients with metastatic nasopharyngeal carcinoma. *Chin J Cancer*. 2015;34(6):237–246. doi:10.1186/s40880-015-0025-7
35. Chang Y, An H, Xu L, et al. Systemic inflammation score predicts post-operative prognosis of patients with clear-cell renal cell carcinoma. *Br J Cancer*. 2015;113(4):626–633. doi:10.1038/bjc.2015.241
36. Temraz S, Mukherji D, Farhat ZAA, et al. Preoperative lymphocyte-to-monocyte ratio predicts clinical outcome in patients undergoing radical cystectomy for transitional cell carcinoma of the bladder: a retrospective analysis. *BMC Urol*. 2014;14:76. doi:10.1186/1471-2490-14-76
37. Diaz-Jaun E, Strickland RG, Williams RC. Studies of human lymphocytes in the newborn and the aged. *Am J Med*. 1975;58(5):620–628. doi:10.1016/0002-9343(75)90497-0
38. Tollerud DJ, Clark JW, Brown LM, et al. The influence of age, race, and gender on peripheral blood mononuclear-cell subsets in healthy nonsmokers. *J Clin Immunol*. 1989;9(3):214–222. doi:10.1007/BF00916817
39. Della Bella S, Bierti L, Presicce P, et al. Peripheral blood dendritic cells and monocytes are differently regulated in the elderly. *Clin Immunol*. 2007;122(2):220–228. doi:10.1016/j.clim.2006.09.012

Cancer Management and Research

Dovepress

Publish your work in this journal

Cancer Management and Research is an international, peer-reviewed open access journal focusing on cancer research and the optimal use of preventative and integrated treatment interventions to achieve improved outcomes, enhanced survival and quality of life for the cancer patient.

The manuscript management system is completely online and includes a very quick and fair peer-review system, which is all easy to use. Visit <http://www.dovepress.com/testimonials.php> to read real quotes from published authors.

Submit your manuscript here: <https://www.dovepress.com/cancer-management-and-research-journal>