

Prognostic Significance of FKBP14 in Gastric Cancer

This article was published in the following Dove Press journal:
OncoTargets and Therapy

Roshan Ara Ghoorun^{1,*}

Xiao-Hua Wu^{2,*}

Hong-Lei Chen³

Dong-Lin Ren¹

Xiao-Bin Wu⁴

¹Department of Colorectal Surgery, The Sixth Affiliated Hospital of Sun Yat-Sen University, Guangzhou, Guangdong, People's Republic of China; ²Department of Oncology, Longhu People's Hospital, Shantou, Guangdong, People's Republic of China; ³Department of Endoscopy, The Eighth Affiliated Hospital of Sun Yat-Sen University, Shenzhen 518033, People's Republic of China; ⁴Department of Gastrointestinal Surgery, The Eighth Affiliated Hospital of Sun Yat-Sen University, Shenzhen 518033, People's Republic of China

*These authors contributed equally to this work

Introduction: Although our understanding on gastric cancer biology is better than a decade ago, its practical effect on screening and diagnosis remains limited. Moreover, there are no markers that can be accurately used in the clinic to diagnose early-stage gastric cancer or monitor the patient's response to therapy. Herein, we investigate whether FKBP14 is involved in the progression of gastric cancer.

Methods: The AGS cell line was chosen for over-expression analysis, whereas the SGC-7901 cell line was selected for knock-down analysis. AGS cells were transfected with an FKBP14 overexpression plasmid (AGS-PLV.O-FLAG). The expression pattern of FKBP14 in both cell lines was determined by Western blot and RT-PCR. Cell proliferation was assessed using Cell Counting Kit-8, whereas apoptosis was performed using flow cytometry. The expression of FKBP14 in 70 Chinese patients with gastric cancer was also investigated using tissue micro-arrays and compared with gastric cancer patients from The Cancer Genome Atlas.

Results: FKBP14 was highly expressed in SGC7901 and had a relatively low expression in AGS cells. Upregulation of FKBP14 in AGS cells promoted migration and invasion and inhibits apoptosis. Knock-down of FKBP14 resulted in a suppression in migration and invasion and promoted apoptosis in the SGC-7901 cell line. Effectively, gastric cancer patients had a higher expression of FKBP14, with a lower survival rate ($P = 0.028$). Patients with a high expression of FKBP14 were significantly correlated with lymph node metastasis ($P = 0.016$), and an advanced histologic grade ($P = 0.021$).

Conclusion: FKBP14 is often up-regulated in gastric cancer. Patients with a high expression of FKBP14 are usually associated with worse overall survival. FKBP14 is an oncogene in gastric cancer, and is a potential biomarker for GC diagnosis, invasion, and prognosis.

Keywords: FKBP14, gastric cancer, in vitro, prognosis, The Cancer Genome Atlas

Introduction

Despite the global decreased incidence since 1950s,¹ gastric cancer (GC) continues to be rampant in many regions around the world. Recent epidemiological studies report GC as the most commonly diagnosed cancer, and the third cancer-leading cause of death worldwide.² Although our understanding on GC biology is better than a decade ago, its practical effect on screening and diagnosis remains limited. Moreover, until now, there are no markers that can be accurately used in the clinic to diagnose early-stage GC or monitor the patient's response to therapy. It is therefore necessary to discover new and appropriate markers, which can differentiate between the different stages of cancer spread.

FKBP14 is a member of the FKBP family. In humans, this family consists of 16 proteins, ranging from 12 to 135 kDa, which are dispersed in several tissues and subcellular compartments. FKBP14 is involved in multiple cellular tasks such as T-cell activation with immunosuppressive ligands, protein folding, protein stability,

Correspondence: Xiao-Bin Wu
Department of Gastrointestinal Surgery,
The Eighth Affiliated Hospital of Sun Yat-Sen
University, No. 3025 Shennan Middle
Road, Shenzhen 518033, People's
Republic of China
Email xiaobinwoo@hotmail.com

Dong-Lin Ren
Department of Colorectal Surgery, The
Sixth Affiliated Hospital of Sun Yat-Sen
University, No. 26 Yuancun Er Heng Rd,
Tianhe District, Guangzhou, Guangdong
510655, People's Republic of China
Tel +86-20-38254151
Email rendlll@163.com

kinase activity, and receptor signaling.³ Lately, the expression levels of FKBP14 have also been shown to be mutated in both cancer cell lines and in human cancer tissues.⁴

Previous studies have demonstrated the role of FKBP14 in Ehlers-Danlos syndrome,⁵ ovarian cancer,⁶ cervical cancer,⁷ and osteosarcoma.⁸ However, the expression of FKBP14 in the invasion and metastasis of GC cells is poorly understood. In this study, we investigate the expression of FKBP14 in the GC and explore its function in regulating cell migration, invasion, and apoptosis. We also evaluate the correlation of FKBP14 with clinicopathologic factors and overall survival (OS).

Materials and Methods

GC Cell Lines

The cell lines were purchased from the Culture Collection of the Chinese Academy of Science (Shanghai, China). Prior to the investigations, all cell lines tested negative for Mycoplasma. The expression of FKBP14 was investigated in the following cell lines: GES-1, HGC-27, BGC-823, SGC-7901, and AGS. The latter was chosen for overexpression analysis, whereas the SGC-7901 cell line was selected for knock-down analysis. The cell lines were cultured in Dulbecco's modified Eagle's medium (DMEM, Invitrogen Life Technologies), at 37°C with 5% CO₂. We also supplemented the cells with 10% fetal bovine serum, 2 mM glutamine, 100 units/mL penicillin-G, and 100 mg/mL streptomycin.

RNA Extraction and qRT-PCR

Total RNA was isolated from cell lines using Trizol (Invitrogen, Carlsbad, CA, USA). β -Actin was used as the control throughout this study. Real-time (RT) PCR was carried out in trio on an ABI 7300 machine (Applied Biosystems, Foster City, CA, USA), utilizing the SYBR Green PCR Master Mix (TOYOBO, Osaka, Japan).

RT-PCR assays for detecting FKBP14 expression level in the cell lines were performed with a specific primer for FKBP14. The specific primer for the latter was F:AGA AGGAAAAGGTAAAATTCCCCC; R: TTCATTCACCAC CGCACCAT, whereas the specific primer for β -actin was F: AGATCAAGATCATTGCTCCTCT; R: ACGCAGCTCAG TAACAGTCC.

Cell Transfection

Cell transfection was performed as per the manufacturer's protocols. AGS cells were transfected with an FKBP14

overexpression plasmid (AGS-PLV.O-FLAG) for the cells that have a low level of endogenous FKBP14. AGS-PLV.O-FLAG and AGS-PLV.O-FLAG-FKBP14 cells were provided by the Cell Construction Group of Guangzhou Huiyuanyuan Pharmaceutical Technology Co., Ltd. (Guangzhou, China). We first seeded AGS cells at a density of 1×10^5 cells utilizing a serum-free RPMI1640 medium. Thereafter, the AGS-NC-FLAG empty vector and AGS-FKBP14-FLAG overexpression vector were used for transfection. For knock-down analysis, we transfected SGC7901 cells with rabbit FKBP14 siRNA (Bioss antibodies, Beijing China). In the experimental group (SGC7901-si-FKBP14 -001), SGC7901 cells were transfected with anti-FKBP14 cells, whereas in the control group (SGC7901-si-NC), SGC7901 cells were transfected with FKBP14's negative control. The expression status of all transfectants was confirmed using Western Blot.

Western Blot Analysis

Western blot was performed as per the manufacturer's protocols (Beyotime, Jiangsu, China). The relative expression of FKBP14 in AGS, AGS-NC-FLAG, AGS-FKBP14-FLAG, SGC7901-si-NC, SGC7901-si-FKBP14 was analyzed using a lysis buffer. The antibodies against FLAG, FKBP14, and β -actin were acquired from Bioss antibodies (Beijing, China).

Cell Proliferation Assay

Cell proliferation was assessed using Cell Counting Kit-8 (CCK-8: Beyotime) as per the manufacturer's directions. Cells were first digested and counted. The cell suspension (200 μ L/well) was prepared according to the counting conditions and inoculum size (5000/well). For inoculation and culture, the prepared cell suspension was inoculated into a 96-well plate, and the plate was pre-cultured (37°C, 5% CO₂) for 4 hrs, 24 hrs, 48 hrs and 72 hrs in an incubator. Using the CCK8 detection kit, 20 μ L of CCK8 solution was added to each well. Care was taken to not generate bubbles in the pores. The culture plate was then incubated for 2 hrs. A microplate reader was used to measure absorbance at 450nm.

Wound Healing Assay

Cells suspension was prepared at a concentration of 1×10^6 /mL, and uniformly inoculated into a 6-well culture plate and cultured in a 37°C, 5% CO₂ incubator. The monolayer cells were evenly spread on the bottom of the plate. Thereafter, the cells were changed and treated with mitomycin (4 μ g/mL) for 2 hrs to inhibit cell division. Scratches were made along the cells

using a 10µL pipette. The cell culture medium was aspirated and rinsed three times in PBS to wash away the cell debris generated by the scratch. The cells were photographed at 0hr, 6hrs, and 24hrs. The cell migration distance was calculated using mage Pro-Plus 6.0 software.

Transwell Assay

The cell culture was rinsed with PBS and then re-suspended with a serum-free medium. 5×10^4 cells were inoculated in the upper chamber supplemented with 500 µL of complete medium in the lower chamber. The plate was then incubated for 48 hrs. The next day, after rinsing the cells, 0.1% crystal violet dye solution was added for 20 mins. The stained cells were observed under the microscope and photographed.

Cell Apoptosis Analysis

The harvested cells were re-suspended with binding buffer. Care was taken to ensure the number of cells per tube remained at 1×10^5 . 5 µL of Annexin V-APC was added to the cells, gently vortexed, and incubated at room temperature for 15 mins. After resuspension, apoptosis was detected using Flowjo analysis.

Pathological Specimens

All patients provided a written informed consent form prior to the experiment. The Ethics committee of the Sixth Affiliated hospital of Sun Yat-Sen University approved of this investigation. At the time of tissue collection, a fraction was immediately frozen in liquid nitrogen and stored at -80°C until ready for RNA extraction while the other fraction was formalin-fixed, and paraffin embedded for histopathology diagnosis and immunohistochemical study.

Immunohistochemistry and Immunohistochemical Analyses

Tissue microarrays (TMA) were used for the immunohistochemistry analysis. 70 gastric cancer tissues and 10 non-cancer gastric tissue were utilized to construct the TMA. We excluded patients who underwent any neoadjuvant chemotherapy or radiotherapy. We also further retrieved clinical information for 414 gastric cancer tissues from The Cancer Genome Atlas; the expression of FKBP14 at mRNA level was analyzed, and a survival analysis was performed. The detailed information on the clinical features of all patients in this study is classified in [Table 1](#).

Immunohistochemistry Analysis

Immunohistochemistry was performed as previously described.⁹ As per the manufacturer's protocols, we cut the paraffin-embedded tissues at 4µm, and performed negative controls by omitting out the primary antibody. In brief, Paraffin was gradually removed from the tissues using Xylene, and then rehydrated for further peroxidase (DAB) immunohistochemistry staining. The latter was done utilizing the DAKO EnVision System (Dako Diagnostics, Switzerland).

After the short proteolytic digestion, peroxidase was added to the slides. The latter were then incubated overnight with the primary antibody against FKBP14 (rabbit polyclonal antibody, bs-16092R, Bioss, Inc. CN) at a dilution of 1: 600, at 4°C . We then utilized a peroxidase-labeled polymer and a substrate-chromogen to analyze FKBP14 in GC tissues.

Evaluation of Immunostaining Results

Two experienced pathologists independently scored the immunostaining intensity. None of the pathologists knew the clinicopathological data or clinical outcomes of the patients. Any discrepancy was reevaluated by the consultant pathologist. They evaluated the immunolabeling of cancer cells as previously described.

In brief, the two pathologists separately scored and stratified the staining intensity as follows: no dyeing (score point = 0), mild dyeing (score point = 1), moderate dyeing (score point = 2), and strong dyeing (score point = 3). The area covered by the immunoreactive tumor cells was calculated as follows: 0% (score point = 0), 1–10% (score point = 1), 11–50% (score point = 2), 51–75% (score point = 3), and >75% (score point = 4). The ultimate immunoreactivity scores (IRS) of each case were totaled by adding up the two obtained scores.

Statistical Analysis

We used SPSS 23.0 (SPSS, Inc, Chicago, Illinois) to carry out the statistical analysis. Student's *t*-test was used to assess continuous variables, whereas we used the Chi-square test or Fisher's exact test to correlate categorical variables. We assessed survival time starting from the date of surgery to the date of death due to any cause or until the last day of follow-up. We used the Kaplan-Meier method to perform survival analysis; correlation was done using the log-rank test. We also used the Cox proportional hazards model to assess multivariate survival analysis. A P value less than 0.05 was deemed as statistically significant.

Table I Correlation of FKBP14 Expression with Clinicopathological Characteristics in Patients with Gastric Cancer (*P<0.05)

Clinical Features	TMA				TCGA		
	Case	Low, n (%)	High, n (%)	P	Case	Mean	P
Tissue type							
Cancer	70	41(58.6)	29(41.4)	0.340	–	–	–
Non-cancer	10	8(80.0)	2(20.0)				
Age							
≤65	65	39(60.0)	26(40.0)	0.854	184	207.04±111.45	0.996
>65	15	10(66.7)	5(33.3)		225	207.09±89.4	
Gender							
Male	62	39(62.9)	23(37.1)	0.773	267	209.10±97.31	0.655
Female	18	10(55.6)	8(44.4)		147	204.38±105.30	
Tumor stage							
T1-T2	19	13(68.4)	6(31.6)	0.4154	109	193.10±98.33	0.110
T3-T4	51	28(54.9)	23(45.1)		296	210.84±99.51	
Lymph node metastasis							
N0-N1	49	33(67.3)	16(32.7)	0.016*	234	198.01±89.11	0.036*
N2-N4	19	6(31.6)	13(68.4)		161	220.46±112.81	
Distant metastasis							
M0	69	41(59.4)	28(40.6)	0.861	367	207.24±101.01	0.786
M1	1	0(0.0)	1(100.0)		27	201.90±97.63	
Neoplasm Histologic Grade							
G1-G2	26	20(76.9)	6(23.1)	0.021*	159	187.45±84.87	0.001*
G3-G4	38	17(44.7)	21(55.3)		246	218.94±106.13	
Neoplasm Disease Stage							
Stage I-Stage II	32	23(71.9)	9(28.1)	0.067	179	195.45±88.32	0.031*
Stage III-Stage IV	38	18(47.4)	20(52.6)		210	217.13±108.64	

Results

Expression of FKBP14 in Gastric Cancer Cells

We used the SGC7901 and the AGS cell line to assess the role of FKBP14 in GC. FKBP14 was highly expressed in SGC7901 and had a relatively low expression in AGS cells. Therefore, the SGC7901 cell line was used for knockdown experiments whereas the AGS cell line was employed for over-expression experiments owing to the relatively poor expression (Figure 1A).

Over-Expression of FKBP14 Intensifies Cell Growth in GC

To assess whether FKBP14 over-expression advocates cell growth in GC, we infected the AGS cell line with an over-expression plasmid (AGS-PLV.O-FLAG) (Figure 1B). FKBP14 over-expression was confirmed by qPCR (Figure 1C) and Western blot analysis (Figure 1D and E).

CCK-8 assay (Figure 2A), transwell assay (Figure 2B), wound healing assay (Figure 2C) showed that FKBP14 hastened the cell growth rates and slows down the rate of apoptosis in AGS-PLV.O-FLAG-FKBP14 cells (Figure 2D).

Knock-Down of FKBP14 in SGC7901 Cells

A stable cell line silencing FKBP14 (SGC7901-SI-FKBP14-002) was generated in the SGC-7901 cell line using anti-FKBP14 antibodies. Western blot was used to confirm FKBP14 was knocked down from the cell line (Figure 3A). The rate of proliferation, invasion, and apoptosis were investigated to assess the effect of FKBP14 knockdown in GC. Our results showed that FKBP14 knockdown effectively slowed down cell growth (Figure 3B and C), and increases apoptosis relative to control cells (Figure 3D). These findings collectively suggested that FKBP14 knock-down significantly inhibits cell proliferation of GC cells.

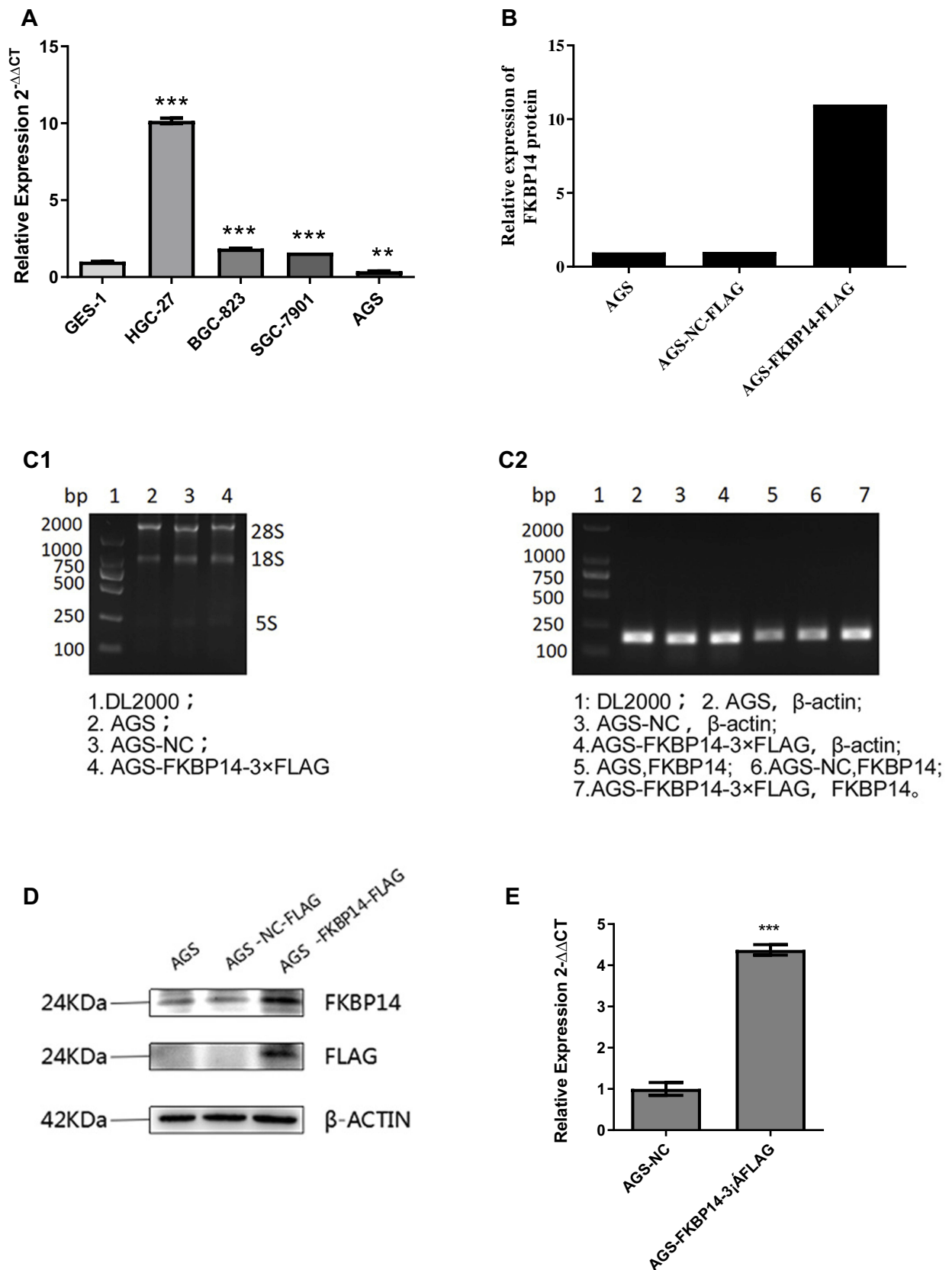


Figure 1 (A): The relative expression of FKBP14 was investigated in several cell lines; $^{**}P < 0.05$, $^{***}P < 0.001$. We selected the AGS cell line for over-expression analysis and the SGC-7901 for knock-down analysis. **(B):** Using AGS-NC-FLAG as a control, we observe that AGS-FKBP14-FLAG has a very significant overexpression effect ($>100\%$); **(C1, C2):** qPCR confirmed the over-expression of FKBP14 in the plasmid **(D, E):** Western blot further confirmed the over-expression of FKBP14 in the plasmid; $^{***}P < 0.01$.

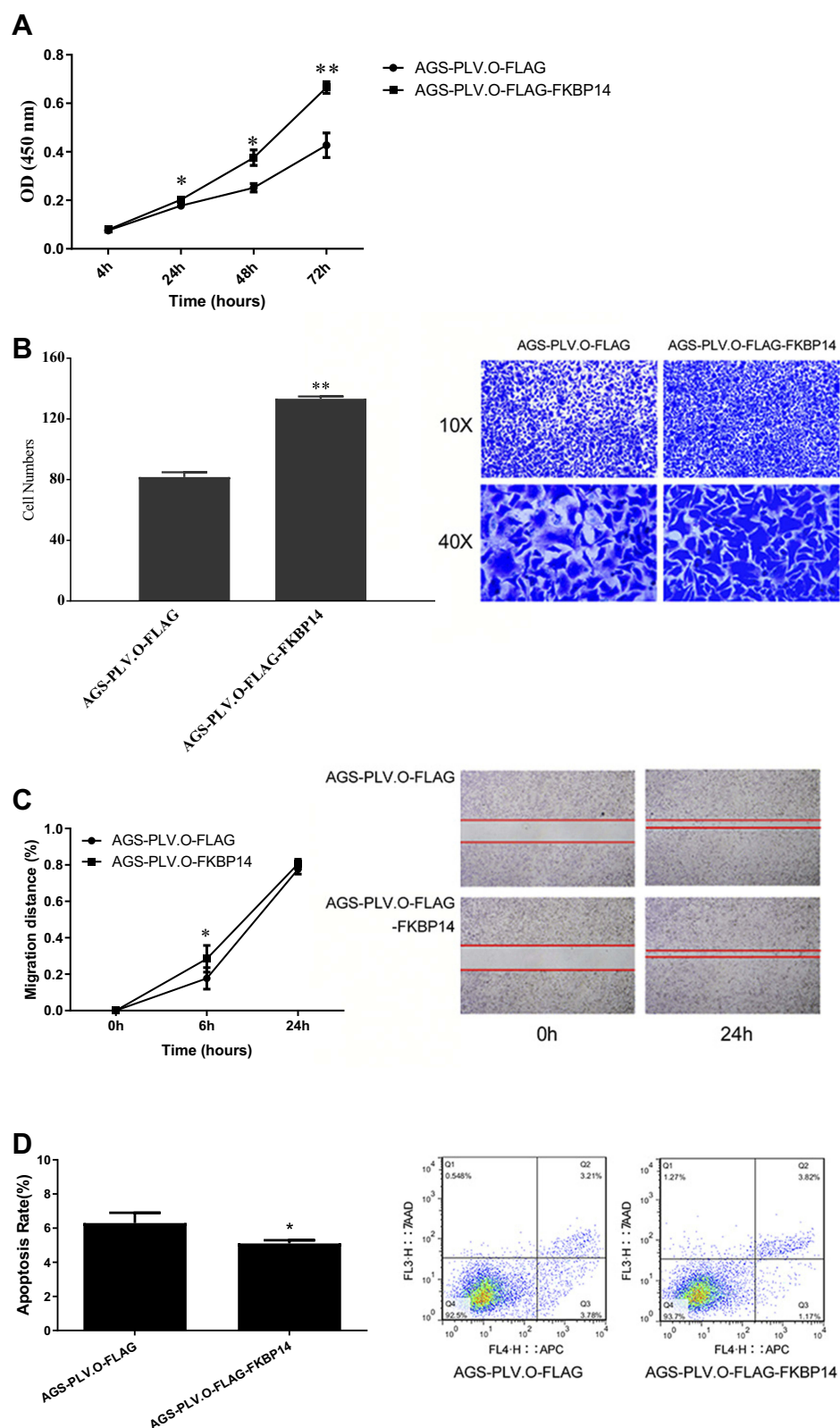


Figure 2 (A) At 4hrs, there was no significant difference in OD values between the two groups, $P > 0.05$. Statistical significance was observed at 24hrs and 48hrs; the OD value of AGS-PLV.O-FLAG-FKBP14 in the experimental group was higher than that in the control group; * $P < 0.05$. Further statistical significance was observed at 72hrs, whereby the OD value of the experimental group AGS-PLV.O-FLAG-FKBP14 was higher than that of the control group AGS-PLV.O-FLAG; ** $P < 0.001$. (B) Compared with the control group, the invasive rate of AGS cells was significantly increased after overexpression of FKBP14; * $P < 0.001$. (C) At 6hrs, compared with the control group, the experimental group AGS-PLV.O-FLAG-FKBP14 had a higher mobility rate; * $P < 0.05$. At 24 h, there was no significant difference between the two groups. (D) There was a significant decrease in the rate of apoptosis for the AGS cell line after over-expression with FKBP14; * $P < 0.05$.

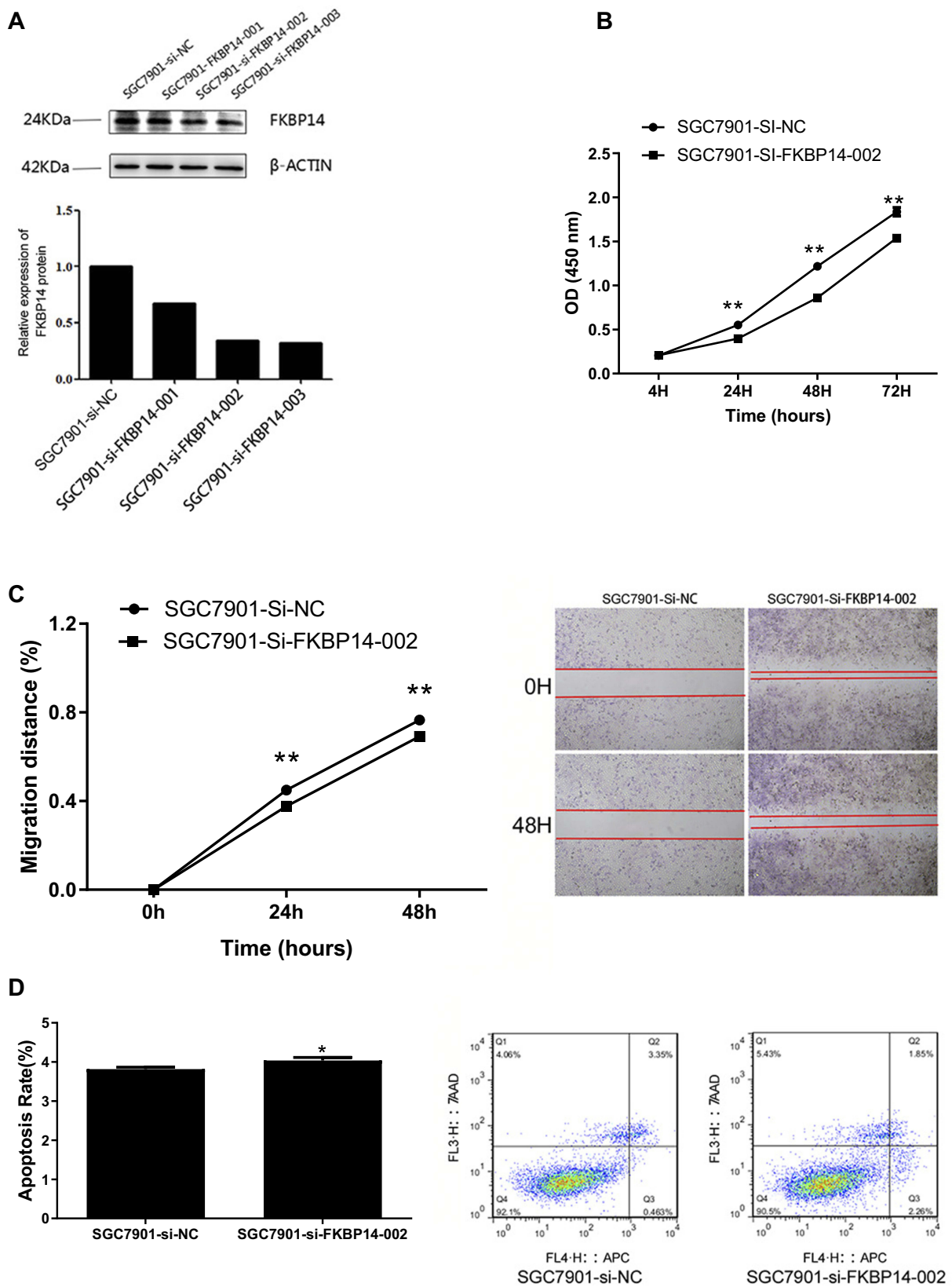


Figure 3 (A): A significant knock-down effect was observed in the SGC7901-si-FKBP14-002 and the SGC7901-si-FKBP14-003 cell line. **(B):** Compared with the control group (SGC7901-si-FKBP14-NC), the mRNA expression level of FKBP14 in the inhibition group (SGC7901-si-FKBP14-001, SGC7901-si-FKBP14-002, SGC7901-si-FKBP14-003) was significantly decreased; $**P<0.05$. **(C):** At 24hrs and 48hrs, respectively, the mobility of the experimental group SGC7901-si-FKBP14-002 was lower than that of the control group; $**P<0.01$. **(D):** Apoptosis in the SGC7901 cell line was increased after inhibition of FKBP14; $*P<0.05$.

FKBP14 Protein Is Up-Regulated in Human Gastric Cancer Tissues

FKBP14 protein expression was first detected in Tissue micro-arrays (TMA) (Table 1) using immunohistochemistry (Figure 4A). FKBP14 immunostainings occurred more strongly in the cytoplasm of gastric cancer tissues (Figure 4C–F). We also observe that an overexpression of FKBP14 protein was significantly associated with lymph node metastasis ($P=0.016$) (Figure 4B1), and neoplasm histologic Grade ($P=0.021$) (Figure 4B2). However, high FKBP14

levels were not associated with tissue type, age, gender, tumor stage, distant metastasis, TNM Stage (all $P > 0.05$) (Table 1).

Increased Expression of FKBP14 Is Associated with Lymph Node Metastasis, TNM Stage and Histologic Grade of Gastric Cancer Tissues in TCGA Database

An open database (The Cancer Genome Atlas database) was used to confirm our results. In this database, we analyzed the

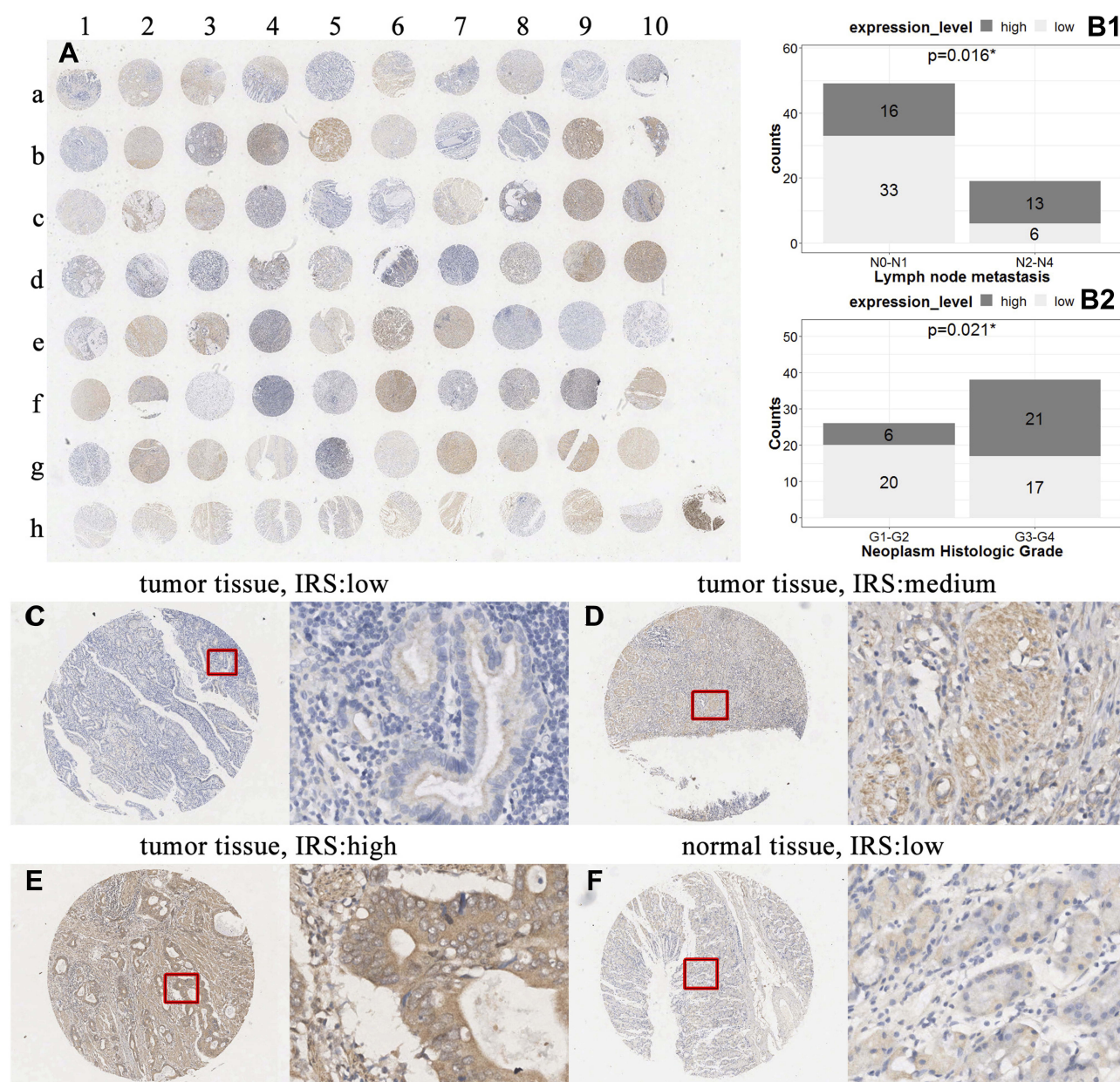


Figure 4 (A): The tissue micro-array (B): An overexpression of FKBP14 protein was significantly associated with lymph node metastasis; $*P < 0.05$, and neoplasm histologic Grade; $*P < 0.05$. (C–F): FKBP14 immunostainings occur more strongly in the cytoplasm of gastric cancer tissues.

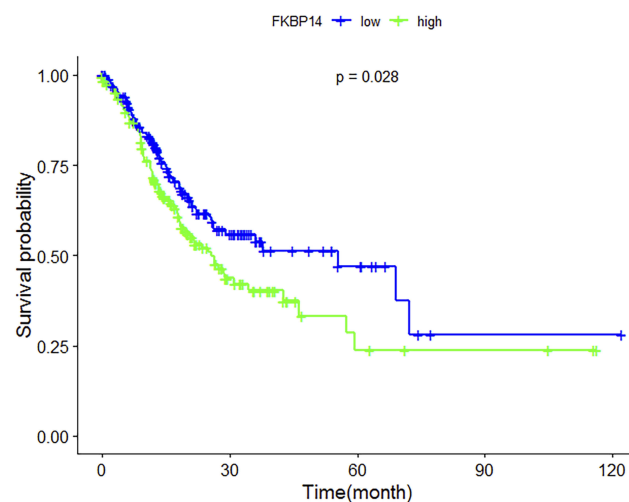


Figure 5 The Kaplan-Meier survival curve from the 70 gastric cancer patients used in this study shows a high expression of FKBPI4 expression is significantly correlated to poor survival ($P < 0.05$).

sequencing data of 414 gastric cancer tissues. Similar to our results, FKBPI4 was upregulated upon lymph node metastasis (N2, N3, or N4) ($P = 0.036$) and when the histological grade was G3 or G4 (0.001). However, unlike our results, statistical significance was also observed for patients in TNM Stage III-IV in the TCGA database (0.031).

FKBPI4 Is an Independent Prognostic Factor in Gastric Cancer

The effect of FKBPI4 expression status on overall survival (OS) was assessed. Kaplan-Meier survival curves showed that

a high expression of FKBPI4 expression was significantly correlated to poor survival ($P = 0.028$) (Figure 5). Multivariate analysis using Cox proportional hazards model revealed that high FKBPI4 expression was independent of lymph node metastasis (0.006) and of TNM disease stage (<0.001) (Table 2).

Discussion

The low survival rate of GC is attributed to the following factors: (1) inadequate diagnostic tools for early detection and progression of GC; (2) unsuitable prognostic indicators; (3) low efficacy of current treatment modalities (including surgery and chemotherapy) in advanced GC; (4) lack of understanding in treatment resistance and tumor progression. All these issues can be fixed upon the development of adequate tools which can both diagnose and monitor GC to improve the clinical outcome of patients.

Herein, we initially observe that FKBPI4 can effectively speed up cell growth and slow down apoptosis in the GC, which is in accordance with the study performed by Wang et al.¹⁰ Using the SGC7901 cell line, we observe that KBP14 knockdown significantly inhibits cell proliferation of GC cells. Most patients die of GC as the disease has already metastasized at the time of presentation. Cell invasion is a significant feature associated with cancer metastasis. One way through which cancer cells can form new tumors is through cell adhesion. Herein, we observe that FKBPI4 can hasten cell growth and slows down apoptosis. Silencing of FKBPI4 effectively suppressed

Table 2 Prognostic Value of FKBPI4 Expression for Survival Rate by Cox Proportional Hazards Model (* $P < 0.05$; ** $P < 0.01$; *** $P < 0.0001$)

Variable	Survival Rate	
	HR (95% CI)	P
Univariate analysis		
FKBPI4	1.002(1.000–1.003)	0.005**
Age (≤ 65 vs > 65)	1.589(1.151–2.193)	0.005**
Gender (Male vs Female)	0.818(0.585–1.145)	0.242
Tumor stage (T1-T2 vs T3-T4)	1.822(1.213–2.737)	0.004**
Lymph node metastasis (N0-N1 vs N2-N4)	1.628(1.185–2.236)	0.003**
Distant metastasis (M0 vs M1)	2.354(1.379–4.020)	0.002**
Neoplasm Histologic Grade (G1-G2 vs G3-G4)	1.441(1.031–2.015)	0.033
Neoplasm Disease Stage (Stage I-Stage II vs Stage III-Stage IV)	1.979(1.402–2.792)	<0.001 ***
Multivariate analysis		
FKBPI4 vs	1.002(1.000–1.003)	0.032*
Lymph node metastasis	1.569(1.139–2.160)	0.006**
FKBPI4 vs	1.002(1.000–1.003)	0.039*
Neoplasm Disease Stage	1.914(1.354–2.706)	<0.001 ***

the adhesion and invasion of GC cells. These results illustrate that FKBP14 is associated with GC metastasis.

By conducting Kaplan-Meier survival curves, we observe that a high FKBP14 expression is significantly associated with unfavourable survival. Univariate and multivariate analyses further confirm that FKBP14 is an independent predictor of lymph node metastasis and TNM stage, and that it may serve as a predictive biomarker of patient prognosis. Subgroup analyses further revealed that patients with a high expression of FKBP14 were significantly correlated with lymph node metastasis ($P=0.016$), and an advanced histologic grade ($P=0.021$). However, unlike the results of The Cancer Genome Atlas database, an overexpression of FKBP14 was not associated with an advanced TNM stage in the Chinese population.

Various genetic and epigenetic mutations are responsible for oncogenesis and cancer progression. Recently, there has been a strong association between FKBP14 and cancer. This is mainly due to the increased activity of mammalian target of rapamycin (mTOR) by FKBP14, particularly in cells with no functional PTEN.¹¹ Favorable management of cancer using immunosuppressants FK 506 and rapamycin highlights the likelihood of targeting FKBP14 in cancer treatment.¹² In leukemia, inhibition of FKBP14 has been shown to promote drug-induced apoptosis.¹³ Few reports have showed that FKBP14 is mutated in several malignancies. In ovarian cancer, knockdown of FKBP14 inhibited cell growth.⁷ In osteosarcoma, an increased expression of FKBP14 was correlated with metastasis and tumor stage.⁸ In vitro experiments showed that an under-expression of FKBP14 weakened cell invasion and inhibited the expression level of PCNA, CDK1, and CCNB1.¹⁴

This study is, to our knowledge, the first to investigate the expression level and effects of knocking down FKBP14 in the SGC7901 cell line, as well as correlate the clinicopathological factors and prognosis of FKBP14 in GC. Since FKBP14 is strongly associated with lymph node metastasis and TNM stage, our study implicates FKBP14 can be used to monitor disease progression. Few limitations need to be noted in our study. We did not investigate the signaling pathway of FKBP14 in GC. Also, we did not analyze any association between FKBP14 and chemoresistance. Further studies should address these issues.

Conclusion

Our study suggests patients exhibiting an overexpression of FKBP14 in GC promotes cell proliferation and migration.

Moreover, high expressions of FKBP14 in GC are correlated with poor clinicopathological factors of GC and forecast a low OS for patients with advanced GC. Our results suggest overexpression of FKBP14 in GC is a potential biomarker for GC diagnosis, invasion, and prognosis.

Abbreviations

GC, Gastric cancer; OS, Overall Survival; IRS, Immunoreactivity scores; TMA, Tissue micro-arrays; TCGA, The Cancer Genome Atlas database.

Acknowledgement

The authors acknowledge Callum M.G. Walker for proof-editing.

Author Contributions

Roshan Ara Ghoorun and Xiao-Hua Wu: conception and design, data acquisition, and manuscript drafting. Hong-Lei Chen, Dong-Lin Ren, and Xiao-Bin Wu: data analysis and interpretation and critical revision of the manuscript. All authors have approved the final version of the manuscript to be published and have agreed to be accountable for all aspects of this work in ensuring the accuracy and integrity of this work.

Ethics Approval and Consent to Participate

Ethics approval was granted by the Sixth Affiliated Hospital of the Sun Yat-Sen University and the Eighth Affiliated Hospital of Sun Yat-Sen University.

Patient Consent for Publication

Only patients from the Sixth Affiliated Hospital of Sun Yat-Sen University were enrolled in this study. All patients provided a written consent form prior to the experiment. The Ethics Committee of the Sixth Affiliated Hospital of Sun Yat-Sen University approved this investigation.

Funding

This study was supported by the Sun Yat-sen University Clinical Research 5010 Program (2012017) and the Science and Technology Program of Guangdong (2017A010105004).

Disclosure

All authors declare that they have no financial relationships to disclose and they report no conflicts of interest in this work.

References

1. Parkin DM, Pisani P, Ferlay J. Estimates of the worldwide incidence of eighteen major cancers in 1985. *Int J Cancer*. 1993;54:594–606. doi:10.1002/(ISSN)1097-0215
2. Bray F, Ferlay J, Soerjomataram I, Siegel RL, Torre LA, Jemal A. Global cancer statistics 2018: GLOBOCAN estimates of incidence and mortality worldwide for 36 cancers in 185 countries. *CA Cancer J Clin*. 2018;68:394–424. doi:10.3322/caac.v68.6
3. Ghartey-Kwansah G, Li Z, Feng R, et al. Comparative analysis of FKBP family protein: evaluation, structure, and function in mammals and *Drosophila melanogaster*. *BMC Dev Biol*. 2018;18(1):7. doi:10.1186/s12861-018-0167-3
4. Solassol J, Mange A, Maudelonde T. FKBP family proteins as promising new biomarkers for cancer. *Curr Opin Pharmacol*. 2011;11(4):320–325. doi:10.1016/j.coph.2011.03.012
5. Bursztejn AC, Baumann M, Lipsker D. Ehlers-Danlos syndrome related to FKBP14 mutations: detailed cutaneous phenotype. *Clin Exp Dermatol*. 2017;42(1):64–67. doi:10.1111/ced.2017.42.issue-1
6. Lu M, Miao Y, Qi L, Bai M, Zhang J, Feng Y. RNAi-mediated downregulation of FKBP14 suppresses the growth of human ovarian cancer cells. *Oncol Res*. 2016;23(6):267–274. doi:10.3727/096504016X14549667333963
7. Sun LY, Tao JZ, Yan B, Lin JS. Inhibitory effects of FKBP14 on human cervical cancer cells. *Mol Med Rep*. 2017;16(4):4265–4272. doi:10.3892/mmr.2017.7043
8. Wang K, Qi XJ, Liu HZ, Su H. MiR-361 inhibits osteosarcoma cell lines invasion and proliferation by targeting FKBP14. *Eur Rev Med Pharmacol Sci*. 2018;22(1):79–86. doi:10.26355/eurrev_2018_01_14103
9. Yang Z, Ghoorun RA, Fan X, et al. High expression of Beclin-1 predicts favorable prognosis for patients with colorectal cancer. *Clin Res Hepatol Gastroenterol*. 2015;39(1):98–106. doi:10.1016/j.clinre.2014.06.014
10. Wang R, Fang H, Fang Q. Downregulation of FKBP14 by RNA interference inhibits the proliferation, adhesion and invasion of gastric cancer cells. *Oncol Lett*. 2017;13(4):2811–2816. doi:10.3892/ol.2017.5781
11. Wang X, Proud CG. mTORC1 signaling: what we still don't know. *J Mol Cell Biol*. 2011;3:206–220.
12. Kozany C, März A, Kress C, Hausch F. Fluorescent probes to characterise FK506-binding proteins. *Chembiochem*. 2009;10:1402–1410. doi:10.1002/cbic.v10:8
13. Tissing WJ, Meijerink JP, den Boer ML, Brinkhof B, Pieters R. mRNA expression levels of (co) chaperone molecules of the glucocorticoid receptor are not involved in glucocorticoid resistance in pediatric ALL. *Leukemia*. 2005;19(5):727–733. doi:10.1038/sj.leu.2403681
14. Huang Z, Li J, Du S, et al. FKBP14 overexpression contributes to osteosarcoma carcinogenesis and indicates poor survival outcome. *Oncotarget*. 2016;7(26):39872–39884. doi:10.18632/oncotarget.9524

OncoTargets and Therapy

Dovepress

Publish your work in this journal

OncoTargets and Therapy is an international, peer-reviewed, open access journal focusing on the pathological basis of all cancers, potential targets for therapy and treatment protocols employed to improve the management of cancer patients. The journal also focuses on the impact of management programs and new therapeutic

agents and protocols on patient perspectives such as quality of life, adherence and satisfaction. The manuscript management system is completely online and includes a very quick and fair peer-review system, which is all easy to use. Visit <http://www.dovepress.com/testimonials.php> to read real quotes from published authors.

Submit your manuscript here: <https://www.dovepress.com/oncotargets-and-therapy-journal>