

# Molecular epidemiology and antimicrobial resistance of invasive non-typhoidal *Salmonella* in China, 2007–2016

This article was published in the following Dove Press journal:  
*Infection and Drug Resistance*

Zejiang Zhan,<sup>1</sup> Xuebin Xu,<sup>2</sup> Zhen Gu,<sup>3</sup> Jianghong Meng,<sup>4</sup> Xiayidan Wufuer,<sup>5</sup> Mingliu Wang,<sup>6</sup> Meilian Huang,<sup>7</sup> Jianhui Chen,<sup>8</sup> Chunmei Jing,<sup>9</sup> Zhiying Xiong,<sup>1</sup> Mei Zeng,<sup>10</sup> Ming Liao,<sup>1</sup> Jianmin Zhang<sup>1</sup>

<sup>1</sup>National and Regional Joint Engineering Laboratory for Medicament of Zoonoses Prevention and Control, Key Laboratory of Zoonoses, Ministry of Agriculture, Key Laboratory of Zoonoses Prevention and Control of Guangdong Province, Animal Infectious Diseases Laboratory, College of Veterinary Medicine, South China Agricultural University, Guangzhou, 510642, China; <sup>2</sup>Shanghai Municipal Center for Disease Control and Prevention, Shanghai 200336, China; <sup>3</sup>Emerging Infections Program China Office, Beijing, 102206, China; <sup>4</sup>Department of Food Science and Nutrition, University of Maryland, College Park, Maryland 20742, USA; <sup>5</sup>Xinjiang Uygur Autonomous Region Center for Disease Control and Prevention, Urumchi 830001, China; <sup>6</sup>Guangxi Zhuang Autonomous Region Disease Prevention and Control Center, Nanning 530028, China; <sup>7</sup>Xiamen City Children's Hospital, Xiamen 361006, China; <sup>8</sup>Fujian Provincial Center for Disease Control and Prevention, Fuzhou 350001, China; <sup>9</sup>Chongqing City Children's Hospital, Chongqing 400014, China; <sup>10</sup>Department of Infectious Diseases, Children's Hospital of Fudan University, Shanghai 200336, China

Correspondence: Mei Zeng  
Department of Infectious Diseases,  
Children's Hospital of Fudan University, 399  
Wanyuan Road, Shanghai 201102, China  
Email zengmeigao@aliyun.com

Jianmin Zhang  
College of Veterinary Medicine, South China  
Agricultural University, No. 483 Wushan  
Road, Tianhe District, Guangzhou 510642,  
China  
Tel +86 20 8528 0240  
Fax +86 20 8528 5282  
Email junfeng-v@163.com

**Purpose:** Human infections caused by invasive non-typhoidal *Salmonella* (iNTS) are highly prevalent worldwide. However, data for such infections in China are scarce. This study reports the epidemiology of iNTS in China.

**Methods:** INTS isolates were recovered from blood and other clinical specimens collected during 2007–2016 across five provinces (Shanghai, Xinjiang, Fujian, Guangxi, and Chongqing) in China. Antimicrobial susceptibility was performed using the agar dilution method and molecular epidemiology was performed using standard microbiological techniques.

**Results:** A total of 178 iNTS isolates were recovered from approximately 9700 patient specimens during 2007–2016. The predominant serovars were *Salmonella* Enteritidis (57/178, 32%), *Salmonella* Choleraesuis (47/178, 26.4%), and *Salmonella* Typhimurium (24/178, 13.5%). Up to 50 isolates (28.1%) were from patients who were ≤1 year of age, while 28 (15.7%) were from patients who were ≥60 years. Among these isolates, high rates of resistance to nalidixic acid (114/178, 64%), sulfisoxazole (59%), ciprofloxacin (15.2%), and cefotaxime (8.4%) were found. Moreover, 53.4% (95/178) exhibited multidrug resistance, and 3.9% (7/178) showed co-resistance to third-generation cephalosporins and ciprofloxacin. Steadily increasing numbers of nalidixic acid, cefotaxime, and ciprofloxacin-resistant isolates, but decreasing numbers of multidrug resistance isolates were detected during the study period. Detection of quinolone genes in 114 nalidixic acid-resistant isolates showed that 58.3% (67/114) harbored plasmid-mediated quinolone resistance (PMQR) genes [*aac(6')-Ib-cr*, *qnrA*, *qnrB*, *oqxAB*, *qepA*, *qnrS*, and *qnrD*] and 98.2% (112/114) exhibited mutations in quinolone resistance determining regions [*gyrA*, *parC*, and *parE*]. Furthermore, we detected beta-lactamases genes in the ceftriaxone-resistant isolates. The most common were *bla*<sub>TEM-1</sub> (93.3%), followed by *bla*<sub>CTX-M-55</sub> (40%), *bla*<sub>CMY-2</sub> (33.3%), and *bla*<sub>OXA-1</sub> (33.3%). Finally, a range of pulsed-field gel electrophoresis patterns were detected among the *Salmonella* Enteritidis and *Salmonella* Typhimurium isolates.

**Conclusion:** High rates of multidrug resistance and steadily increasing cefotaxime and ciprofloxacin-resistant iNTS could pose a significant challenge for the effective treatment of salmonellosis in China.

**Keywords:** invasive non-typhoidal *Salmonella*, fluoroquinolones, multidrug resistant, beta-lactamases, pulsed field gel electrophoresis, China

## Plain language summary

Infections caused by invasive non-typhoidal *Salmonella* (iNTS) bacteria occur when non-typhoidal *Salmonella*, which normally cause diarrhea, enter the bloodstream and spread through the body. INTS infections have become a common cause of infection and death in children and elderly patients, accompanied with other diseases, in sub-Saharan Africa.

However, data for such infections is unknown outside of sub-Saharan Africa. In particular, related data for China, with a large population, is scarce. This study reports on the epidemiology of iNTS in China, in which 178 iNTS isolates were isolated and *Salmonella* Enteritidis, *Salmonella* Choleraesuis, and *Salmonella* Typhimurium were the main serovars. Over half (53.4%) of the isolates exhibited multidrug resistance and 3.9% showed co-resistant to third-generation cephalosporins and ciprofloxacin. Steadily increasing nalidixic acid, cefotaxime, and ciprofloxacin-resistance, but decreasing multidrug resistance, were detected during the study period. The occurrence and diversity of mutations in QRDR and the PMQR genes, conferring fluoroquinolone resistance, in our research were much higher than those reported for iNTS isolates in other regions. A high proportion of cefotaxime-resistant isolates exhibited at least two beta-lactamase genes, which is seldom reported in iNTS isolates. In conclusion, high rates of multidrug resistance and the steadily increasing cefotaxime- and ciprofloxacin-resistant iNTS could pose a significant challenge for the effective treatment of salmonellosis in China.

## Introduction

Invasive bacterial infections caused by invasive nontyphoidal *Salmonella* (iNTS) are a significant public health threat worldwide. An estimated 3.4 million cases of infection and over 680,000 deaths occur annually globally.<sup>1,2</sup> In developed countries, such as the United States, the incidence of iNTS is low, and NTS infections that spread through contaminated food result in a self-limiting diarrheal disease, with invasive disease being rarely recorded.<sup>3</sup> However, in Africa, iNTS ranks as the primary cause of community-acquired invasive bacterial disease and is responsible for nearly 17% of bacterial bloodstream cases.<sup>2,4,5</sup> Infections with iNTS in low-income areas often result in meningitis and septicemia, and these severe infections more frequently occur in immunocompromised hosts and children who are malnourished and are co-infected with malaria.<sup>6,7</sup> China is a big country with a population of about 1.4 billion, and 70–80% of bacterial food poisoning are caused by *Salmonella*.<sup>8</sup> Despite the severe infections caused by iNTS worldwide, little data is available on iNTS infections in China.

Antimicrobial agents are critical to treat patients with complex iNTS infections to reduce the mortality rate. The massive use of antimicrobials to treat patients has caused the resistance rate to increase and the widespread occurrence of iNTS isolates with multidrug resistance (MDR) against traditional antimicrobial agents in Asia and Africa, which often results in death, representing an important public health problem.<sup>9–11</sup> The extended-

spectrum cephalosporins and fluoroquinolones have become the first-line drugs to treat iNTS cases; however, this conversion has resulted in the emergence of iNTS isolates resistant to these drugs.<sup>9</sup>

Therefore, we carried out a study to investigate iNTS infections in China from 2007 to 2016 to determine the molecular epidemiology and antimicrobial susceptibility characteristics of iNTS. The information provided will be useful to develop a comprehensive national surveillance program to help guide clinicians to choose the appropriate treatment for this disease.

## Materials and methods

### Ethics statement

Ethical approval for this study was provided by Shanghai Municipal Center for Disease Control and Prevention (Shanghai, China). This study was performed retrospectively, and individual patient identification was not accessed and informed consent was not required.

### Sample collection and isolate identification

Approximately 9700 clinical samples, including blood, peritoneal fluid, joint fluid, bone fluid, cerebrospinal fluid (CSF), and aspirates were collected from patients presenting with fever at five Government General Hospitals and five Provincial Center for Disease Control and Prevention (CDC) laboratories in Shanghai, Xinjiang, Guangxi, Chongqing, and Fujian Provinces in China from January 2007 to December 2016. The samples were processed following standard blood culture procedures. Briefly, the clinical samples were inoculated into the bottles of aerobic blood culture and incubated in a BACTEC 9050 automated blood culture machine (Becton Dickinson, Franklin Lakes, NJ, USA) according to previously published methods.<sup>12</sup> Commercial antisera (Statens Serum Institut, Copenhagen, Denmark) were used to detect the *Salmonella* serovars. Rainfall information was retrieved from <http://www.cma.gov.cn/using> the combined rainfall data for the five provinces. To avoid confounding effects, patients with multiple positive blood cultures for the same NTS serovar and antimicrobial susceptibility profile were considered as a single case. Cases in which the responsible microbial agent could not be identified were excluded from the analysis of categorical variables to prevent statistical bias.

## Antimicrobial susceptibility testing

Antimicrobial susceptibility to 12 drugs was performed for the iNTS isolates, using an agar dilution method according to the guidelines of Clinical and Laboratory Standards Institute (CLSI) standards.<sup>13</sup> The tested antimicrobial agents comprised: Tetracycline (TET), polymyxin B (PB), imipenem (IPM), chloramphenicol (C), ciprofloxacin (CIP), ofloxacin (OFX), nalidixic acid (NA), sulfisoxazole (SUL), streptomycin (STR), cefepime (CFP) (fourth-generation cephalosporin), cefotaxime (CTX) (third-generation cephalosporin), and ampicillin (AMP). For ciprofloxacin, “ciprofloxacin susceptibility” was used to indicate a minimum inhibitory concentration (MIC) value  $\leq 0.06$  mg/L; the term “decreased ciprofloxacin susceptibility” was reserved for MIC values  $>0.06$  mg/L and  $<1$  mg/L; and the “resistance breakpoint” meant MIC values  $\geq 1$  mg/L.<sup>13</sup> *Escherichia coli* isolates ATCC 25922 and ATCC 35218 served as quality control isolates. The results were interpreted on the basis of CLSI guidelines.<sup>13</sup>

## Molecular analysis of quinolone and cephalosporin resistance

The analysis of quinolone resistance was conducted on 114 NA resistant iNTS isolates by amplification and sequencing of the quinolone resistance determining regions (QRDRs) of the DNA gyrase (*gyrA* and *gyrB*) and DNA topoisomerase IV (*parC* and *parE*) genes, and screening for the presence of the plasmid-mediated quinolone resistance (PMQR) genes, according to methods detailed in a previous study.<sup>14,15</sup> PCR screening and sequencing were conducted on 15 iNTS isolates that were resistant to cefotaxime (MIC  $\geq 4$  mg/L) to confirm the presence of beta-lactamase genes *bla*<sub>TEM</sub>, *bla*<sub>SHV</sub>, *bla*<sub>OXA</sub>, *bla*<sub>CMY</sub> and *bla*<sub>CTX-M</sub> using standard methods.<sup>15–18</sup> The forward and reverse primers for the beta-lactamase genes are shown in Table S1. The PCR products were sent to Sangon Biotech Co., Ltd. (Shanghai, China) for sequencing. Sequence data were then analyzed using DNASTar (DNASTar Inc., Madison, WI, USA) and the sequences were aligned using GenBank online BLAST software (<http://www.ncbi.nlm.nih.gov/BLAST/>).

## Pulse field gel electrophoresis

Pulsed-field gel electrophoresis (PFGE) was performed for *S. Typhimurium* and *S. Enteritidis* isolates using the restriction enzyme *Xba*I (Takara, Dalian, China) according to the PulseNet protocol, as described previously.<sup>8</sup> *Salmonella enterica* serotype Braenderup H9812 served

as standard control isolate. The PFGE results were analyzed using BioNumerics version 6.5 software (Applied Maths, Kortrijk, Belgium).

## Statistical analysis

Comparison of frequencies was calculated using the Chi-squared test in SAS 9.2 (SAS Institute, Cary, NC, USA). A *P*-value  $<0.05$  was considered to indicate statistical significance.

## Results

### Serovars and distribution of age

One hundred and seventy eight iNTS isolates were detected during the study period: 86 isolates from Shanghai, 33 isolates from Chongqing, 10 isolates from Fujian, 42 isolates from Guangxi, and 7 isolates in Xinjiang provinces were recovered from approximate 4900, 1400, 700, 2100 and 600 clinical samples, respectively (Table S2). One hundred and forty six (82%) were collected from blood, five (2.8%) from cerebrospinal fluid, and twenty-seven (15.2%) from joint fluid, peritoneal fluid, bone, and aspirates. Among the isolates, 57 (32%) were identified as *S. Enteritidis*, 47 (26.4%) as *S. Choleraesuis*, and 24 (13.5%) as *S. Typhimurium*, which were the top three serovars, followed by five (2.8%) *S. London*, four (2.2%) *S. Derby*, four (2.2%) *S. Virehow*, four (2.2%) *S. Livingstone*, four (2.2%) *S. Give*, three (1.7%) *S. Weltevreden*, two (1.1%) *S. Indiana*, two (1.1%) *S. Meleagridis*, two (1.1%) *S. Thompson* (1.1%), and seventeen other serovars (Table 1). The aggregate age distribution of infections is displayed in Table S3. Up to 28.1% (50/178,  $p<0.01$ ) of the infections were in patients  $\leq 1$  year of age, while 15.7% (28/178,  $p<0.01$ ) were in patients  $\geq 60$  years old. The male-to-female ratio was approximately 1.43 for iNTS infections. The numbers of iNTS isolations fluctuated over the months, and a seasonal trend was observed, in which an increase in iNTS infections appeared to occur during seasons of concentrated rainfall, mainly between May and October (Figure 1).

### Salmonella meningitis

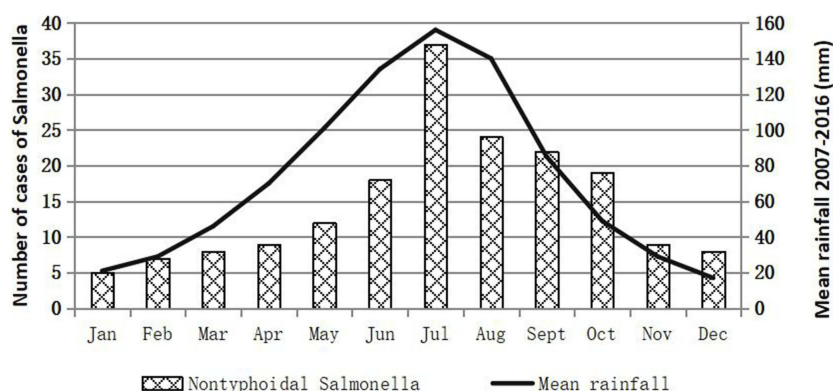
Besides causing bloodstream infections, iNTS are also a cause of life-threatening meningitis in China. From 2007 to 2016, there were five cases of culture-confirmed iNTS meningitis in China. The serovars responsible for the iNTS meningitis cases included *S. Enteritidis* (two), *S. Typhimurium* (one), *S. Derby* (one), and *S. Indiana* (one).

**Table 1** Antimicrobial susceptibility among 178 invasive non-typhoidal *Salmonella* isolates from humans in China, during 2007 to 2016

No. of strains resistant to indicated agent at the indicated breakpoint in mg/L (% resistance) <sup>a</sup>															
S. enterica serotype	No. of strains	MDR phenotype	CIP		CTX	CFP		PB ≥8	OFX ≥2	AMP ≥32	SUL ≥512	C ≥32	TET ≥16	NA ≥32	STR ≥64
			≥1	>0.06and <1		≥4	0.25–2								
Enteritidis	57	24 (42.1)	2 (3.5)	8 (14)	3 (5.3)	10 (17.5)	0	0	2 (3.5)	5 (8.8)	32 (56.1)	0	6 (10.5)	47 (82.5)	32 (56.1)
Choleraesuis	47	38 (80.9)	15 (31.9)	17 (36.2)	2 (4.3)	14 (29.8)	1 (2.1)	2 (4.3)	16 (34)	2 (4.3)	35 (74.5)	32 (68.1)	30 (63.8)	42 (89.4)	29 (61.7)
Typhimurium	24	17 (70.8)	4 (16.7)	6 (25)	2 (8.3)	4 (16.7)	1 (4.2)	0	5 (20.8)	3 (12.5)	13 (54.2)	8 (33.3)	18 (75)	13 (54.2)	12 (50)
Derby	4		0	0	0	0	0	0	0	0	0	1 (25)	1 (25)	0	0
London	5	2 (40)	0	3 (60)	0	0	0	0	0	0	3 (60)	2 (40)	3 (60)	0	0
Give	4	1 (25)	0	2 (50)	0	0	0	0	0	0	2 (50)	1 (25)	1 (25)	3 (75)	1 (25)
Livingstone	4	3 (75)	0	3 (75)	2 (50)	2 (50)	0	0	0	2 (50)	3 (75)	4 (100)	4 (100)	0	2 (50)
Virehow	4	2 (50)	2 (50)	0	0	0	0	0	2 (50)	0	2 (50)	0	2 (50)	2 (50)	0
Weltevreden	3	0	0	1 (33.3)	0	0	0	0	0	0	2 (66.7)	0	0	0	0
Indiana	2	2 (100)	2 (100)	0	2 (100)	0	0	0	2 (100)	2 (100)	2 (100)	0	0	2 (100)	0
Meleagridis	2	2 (100)	0	1 (50)	2 (100)	0	1 (50)	0	0	2 (100)	2 (100)	1 (50)	1 (50)	2 (100)	1 (50)
Thompson	2	2 (100)	2 (100)	0	2 (100)	0	0	0	0	2 (100)	2 (100)	2 (100)	2 (100)	2 (100)	2 (100)
Others	20	2 (10)	0	1 (5)	0	1 (5)	0	0	0	0	7 (35)	1 (5)	3 (15)	1 (5)	2 (10)
Total	178	95 (53.4)	27 (15.2)	42 (23.6)	15 (8.4)	31 (17.4)	3 (1.7)	2 (1.1)	27 (15.2)	18 (10.1)	105 (59)	52 (29.2)	71 (39.9)	114 (64)	81 (45.5)

**Notes:** <sup>a</sup>All isolates were susceptible to Imipenem. The resistance breakpoint for ciprofloxacin is  $\geq 1$  mg/L and for cefotaxime is  $\geq 4$  mg/L.

**Abbreviations:** CIP, ciprofloxacin; CTX, cefotaxime; CFP, cefepime; PB, polymyxin B; OFX, ofloxacin; AMP, ampicillin; SUL, Sulfisoxazole; C, chloramphenicol; TET, tetracycline; NA, nalidixic acid; STR, streptomycin; MDR, multidrug resistant.



**Figure 1** Prevalence of invasive non-typhoidal *Salmonella* in the People's Republic of China by rainfall.

The first case of *Salmonella* meningitis occurred in 2012. All meningitis occurred in children and three cases (60%) involved infants <1 year of age.

## Antimicrobial resistance

The results of antimicrobial resistance for the tested antibiotics for the 178 iNTS isolates are displayed in Table 1. Among these isolates, 114 (64%) were resistant to nalidixic acid, 105 (59%) to sulfisoxazole, 81 (45.5%) to streptomycin, 71 (39.9%) to tetracycline, 52 (29.2%) to chloramphenicol, 27 (15.2%) to ciprofloxacin, 27 (15.2%) to ofloxacin, 18 (10.1%) to ampicillin, 15 (8.4%) to cefotaxime, 3 (1.7%) to cefepime, and 2 (1.1%) to polymyxin B. Forty-two (61.8%) isolates showed decreased ciprofloxacin susceptibility. Overall, 95 (54.3%) serovars were MDR (MDR being defined as resistant to three or more antimicrobial classes). Furthermore, we detected seven (3.9%) isolates that displayed the ACSSuT

pattern (ACSSuT is defined as resistant to tetracycline, sulfamethoxazole, streptomycin, chloramphenicol, and ampicillin) and seven (3.9%) isolates showed co-resistance to cefotaxime and ciprofloxacin. There was a gradual decline in the percentage of MDR isolates (from 80% in 2007 to 30.6% in 2016;  $P < 0.05$ ) during the study period, as well as a parallel increase in nalidixic acid-resistant (NAR) (from 40% in 2007 to 75% in 2016), cefotaxime resistance (from 0% in 2007 to 13.9% in 2016), ciprofloxacin resistance (from 0% in 2007 to 19.4% in 2016), and ACSSuT pattern isolates (from 0% in 2007 to 11.1% in 2016). All iNTS isolates exhibited susceptibility to imipenem (Table 2 and Figure 2).

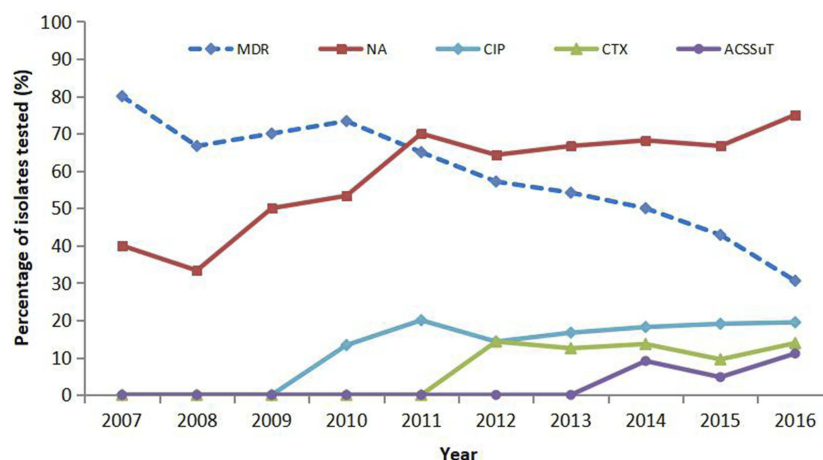
Among the iNTS serovars, *S. Choleraesuis*, *S. Typhimurium*, and *S. Enteritidis* comprised high proportions of MDR isolates: 38/47 [80.9%], 17/24 [70.8%], and 24/57 [43.1%], respectively. The proportions of MDR isolates of *S. Choleraesuis* and *S. Typhimurium* were

**Table 2** Trends in resistance to quinolones, cefotaxime, cefepime, MDR and ACSSuT pattern among iNTS isolates during the study period

Period of isolation	No. (%) susceptible <sup>a</sup>	No. (%) MDR <sup>b</sup>	No. (%) CIP <sup>R</sup>	No. (%) NAR	No. (%) CTX <sup>R</sup>	No. (%) CFP <sup>R</sup>	No. (%) ACSSuT	Year isolation no.
2007	0	8 (80)	0	4 (40)	0	0	0	10
2008	1 (16.7)	4 (66.7)	0	2 (33.3)	0	0	0	6
2009	2 (20)	7 (70)	0	5 (50)	0	0	0	10
2010	2 (13.3)	11 (73.3)	2 (13.3)	8 (53.3)	0	0	0	15
2011	2 (10)	13 (65)	4 (20)	14 (70)	0	0	0	20
2012	2 (14.3)	8 (57.1)	2 (14.3)	9 (64.3)	2 (14.3)	0	0	14
2013	2 (8.3)	13 (54.2)	4 (16.7)	16 (66.7)	3 (12.5)	0	0	24
2014	4 (18.2)	11 (50)	4 (18.2)	15 (68.2)	3 (13.6)	0	2 (9.1)	22
2015	2 (9.5)	9 (42.9)	4 (19)	14 (66.7)	2 (9.5)	1 (4.8)	1 (4.8)	21
2016	4 (11.1)	11 (30.6)	7 (19.4)	27 (75)	5 (13.9)	2 (5.6)	4 (11.1)	36
Total	21 (11.9)	95 (53.4)	27 (15.2)	114 (64)	15 (8.4)	3 (1.7)	7 (3.9)	178

**Abbreviations:** susceptible<sup>a</sup>, susceptible to all tested antibiotics; MDR<sup>b</sup>, resistance to three or more antimicrobial classes; CIP<sup>R</sup>, ciprofloxacin resistant; NAR, nalidixic acid resistant; CTX<sup>R</sup>, cefotaxime resistant; CFP<sup>R</sup>, cefepime resistant; ACSSuT, resistance to tetracycline, sulfamethoxazole, streptomycin, chloramphenicol and ampicillin.





**Figure 2** The trend of resistance to invasive non-typhoidal Salmonella (iNTS) isolates annually from 2007 to 2016. Numbers in brackets indicate the total number of iNTS isolates cultured in each year in China. Proportions that were nalidixic acid resistant (NAR) and multidrug resistant (MDR). Also shown are cefotaxime- (CTX) and ACSSuT resistant patterns among the iNTS isolates.

significantly higher than that of *S. Enteritidis* ( $p < 0.05$ ). Fifteen (31.9%) *S. Choleraesuis* and four (16.7%) *S. Typhimurium* isolates exhibited resistance to ciprofloxacin. In addition, the uncommon serovars *S. Livingstone*, *S. Meleagridis*, *S. Thompson*, and *S. Indiana* showed resistance to cefotaxime, ciprofloxacin, and the ACSSuT pattern (Tables 1 and 3).

## Molecular analysis of quinolone resistance

Detection of PMQR genes in the 114 NAR iNTS isolates showed that *aac(6')-Ib-cr* (33.3%, 38/114) was the most common gene, 20 (17.5%) isolates harbored *qnrA*, 15 (13.2%) harbored *qnrB*, 8 (7%) harbored *oqxABaac*, 8 (7%) harbored *qepA*, 5 (4.4%) harbored *qnrS*, and 4 (3.5%) harbored *qnrD*. Sixty-seven (58.3%) NAR isolates were detected to harbor at least one PMQR gene. The co-existence of two or more PMQR genes in a single isolate was observed in 32 isolates.

Correlations among the ciprofloxacin MIC, NAR, and genomic mutations in the QRDR of 114 NAR isolates, are displayed in Table 4. All 47 NAR isolates with susceptibility to ciprofloxacin possessed a single point mutation in the *gyrA* gene (either at Ser83 or Asp87) only. Of the 40 NAR isolates with decreased ciprofloxacin susceptibility, 17 had a single point mutation in the *gyrA* or *parC* genes only, and 23 possessed a single *gyrA* mutation and at least one *parC* mutation. While for the 21 isolates with ciprofloxacin resistance (MIC 1–2 mg/L), 19 (90.5%) showed one mutation in *gyrA* and at least one *parC* mutation. All isolates with high ciprofloxacin MIC ( $\geq 4$  mg/L) exhibited five mutations, double point mutations in the both genes

*gyrA* and *parC*, and a single *parE* mutation (at positions 538 or 530 or 458). Overall, all the isolates that carried PMQR genes possessed mutations in the QRDRs.

## Detection of beta-lactamases

Of the 15 isolates resistant to ceftriaxone, 14 (93.3%) were found to harbor *bla<sub>TEM-1</sub>* genes. Six (40%) isolates were positive for *bla<sub>CTX-M-55</sub>*. *bla<sub>CMY-2</sub>* and *bla<sub>OXA-1</sub>* genes were observed in five isolates (33.3%). One (6.7%) isolate was positive for the *bla<sub>SHV-2</sub>* gene. All isolates exhibited the detected beta-lactamase resistance genes and 12 (80%) isolates harbored at least two beta-lactamase resistance genes (Table 3).

## Pulsed-field gel electrophoresis

Fifty-seven *S. Enteritidis* and 24 *S. Typhimurium* isolates were subjected to PFGE genotyping. Figure 3 shows that 30 PFGE patterns (non-clonal) were observed from the 57 *S. Enteritidis* isolates, and these could be divided into six clusters at 80% similarity (A to F). Cluster E was the biggest cluster and included 51 (89.5%) isolates. Among the 24 *S. Typhimurium* isolates (Figure 4), 21 PFGE patterns (non-clonal) were identified, and these could be divided into nine clusters (A–I) at 80% similarity.

## Discussion

Infections caused by iNTS are a significant public health threat worldwide. Our study revealed the 178 iNTS isolates were identified from a number of specimen types, which was similar to earlier reports.<sup>13,19</sup> A high percentage [30.3% (54/178) and 14.6% (26/178), respectively] of iNTS infections were in patients  $\leq 1$  or  $\geq 60$  years of age. The

**Table 3** The resistance phenotype and bla genes of 15 cefotaxime-resistant isolates and 1 isolate with ACSSuT pattern without resistant to cefotaxime

No.	Source/Geographic origin	Age	Date	Serovar	CTX <sup>a</sup>	CFP <sup>a</sup>	CIP <sup>a</sup>	Other resistance phenotype	Bla genes	PMQR genes
P1	Blood/SH	21d	12/1/6	Indiana	16	2	8	OFX,SUL,NA	TEM-1, CTX-M-55, OXA-1	qnrA, qnrB, Aac (6')-Ib-cr
P2	Blood/SH	19y	12/6/25	Enteritidis	32	2	0.06	AMP, SUL,NA	TEM-1, OXA-1	-
P3	CSF/SH	11m	13/1/11	Indiana	16	2	8	AMP, OFX, SUL, NA	TEM-1, CTX-M-55, OXA-1	qnrS, Aac (6')-Ib-cr
P4	Blood/SH	1y	13/10/13	Meleagridis	4	0.5	0.06	AMP, SUL, STR, NA	TEM-1, CTX-M-55, SHV-2	-
P5	Blood/GX	52y	13/4/5	Choleraesuis	128	2	1	AMPC,TET,STR,NA	TEM-1, CTX-M-55, OXA-1	qnrB, qnrS, Aac (6')-Ib-cr
P6	Blood/FJ	1y	14/12/1	Thompson	8	0.125	4	ACSSuT, NA	TEM-1, CMY-2	-
P7	Aspirates/CQ	11m	14/2/20	Thompson	8	0.125	2	ACSSuT, NA	TEM-1	-
P8	Blood/GX	64y	14/1/8	Typhimurium	128	0.25	1	AMPC,TET, NA	TEM-1, CMY-2	-
P9	Blood/SH	83y	15/6/18	Enteritidis	128	4	0.5	AMP, NA	TEM-1	qnrD
P10	Aspirates/GX	36y	15/11/18	Meleagridis	512	32	0.5	AMPSUL,C,TET,NA	TEM-1, CMY-2	-
P11	Blood/CQ	3m	16/6/10	Enteritidis	256	16	0.25	AMP	TEM-1	-
P12	Blood/SH	4m	16/7/28	Livingstone	64	0.5	0.25	ACSSuT	TEM-1, CMY-2	-
P13	Blood/SH	51y	16/7/5	Livingstone	64	0.5	0.25	ACSSuT	TEM-1, CMY-2	-
P14	Blood/GX	52y	16/9/5	Choleraesuis	128	32	1	ACSSuT, PB, NA	CTX-M-55, OXA-1	Aac (6')-Ib-cr
P15	Blood/SH	59y	16/6/2	Typhimurium	256	32	0.5	ACSSuT, NA	TEM-1,CTX-M-55	qnrS
P16	Aspirates/CQ	9m	15/9/15	Typhimurium	0.5	0.25	2	ACSSuT, NA	None	None

**Notes:** <sup>a</sup>Indicates units of related antibiotics is mg/L. Gray shading indicates the isolate with ACSSuT pattern without resistant to cefotaxime. None indicates that the relevant genes were not tested. - indicates that the relevant genes were tested but not detected.

**Abbreviation:** CSF, cerebrospinal fluid; d, day; m, month; y, year; SH, Shanghai; GX, Guangxi; CQ, Chongqing; FJ, Fujian.

**Table 4** Relationship between ciprofloxacin MIC, point mutations within the QRDRs of DNA gyrase and topoisomerase IV subunit genes and PMQR genes in 114 NAR iNTS isolates

CIP MIC (mg/L)	No. of isolates	Amino acid change in GyrA	Amino acid change in ParC	Amino acid change in ParE	No. (%) Multiple mutations rate <sup>a</sup>	No. (%) Mutation rate <sup>b</sup>	No. (%) PMQR genes rate <sup>c</sup>
0-0.125	47	Asp87→Tyr [26], Asp87→Asn [12], Asp87→Gly [5], Ser83→Tyr [4]				47 (100)	25 (53.2)
0.25-0.5	40	Ser83→Tyr [15], Asp87→Gly [8], Asp87→Asn [6], Asp87→Tyr [5], Ser83→Phe [1]	Thr57→Ser [24], Ser80→Arg [8], Gly78→Cys [1]		23 (57.5)	40 (100)	29 (72.5)
1-2	21	Ser83→Tyr [14], Asp87→Gly [2], Asp87→Tyr [2], Asp87→Asn [1]	Thr57→Ser [19], Gly78→Cys [6], Ser80→Arg [1]		19 (90.5)	19 (90.5)	10 (47.6)
≥4	6	Ser83→Tyr [3], Ser83→Phe [3], Asp87→Asn [3], Asp87→Gly [3]	Thr57→Ser [6], Ser80→Arg [3], Ser80→Ile [3]	Asp530→Asn [2], Ala538→Thr [3], Ser458→Pro [1]	6 (100)	6 (100)	3 (50)

**Notes:** Alterations in the QRDRs of gyrB were not found in any of the isolates tested. The a indicates that isolates exhibit at least two mutations in the QRDRs. The b indicates that isolates exhibit one mutation in the QRDRs. The c indicates that isolates exhibit both mutations in the QRDRs and PMQR gene.

**Abbreviations:** CIP, ciprofloxacin; MIC, minimum inhibitory concentration.

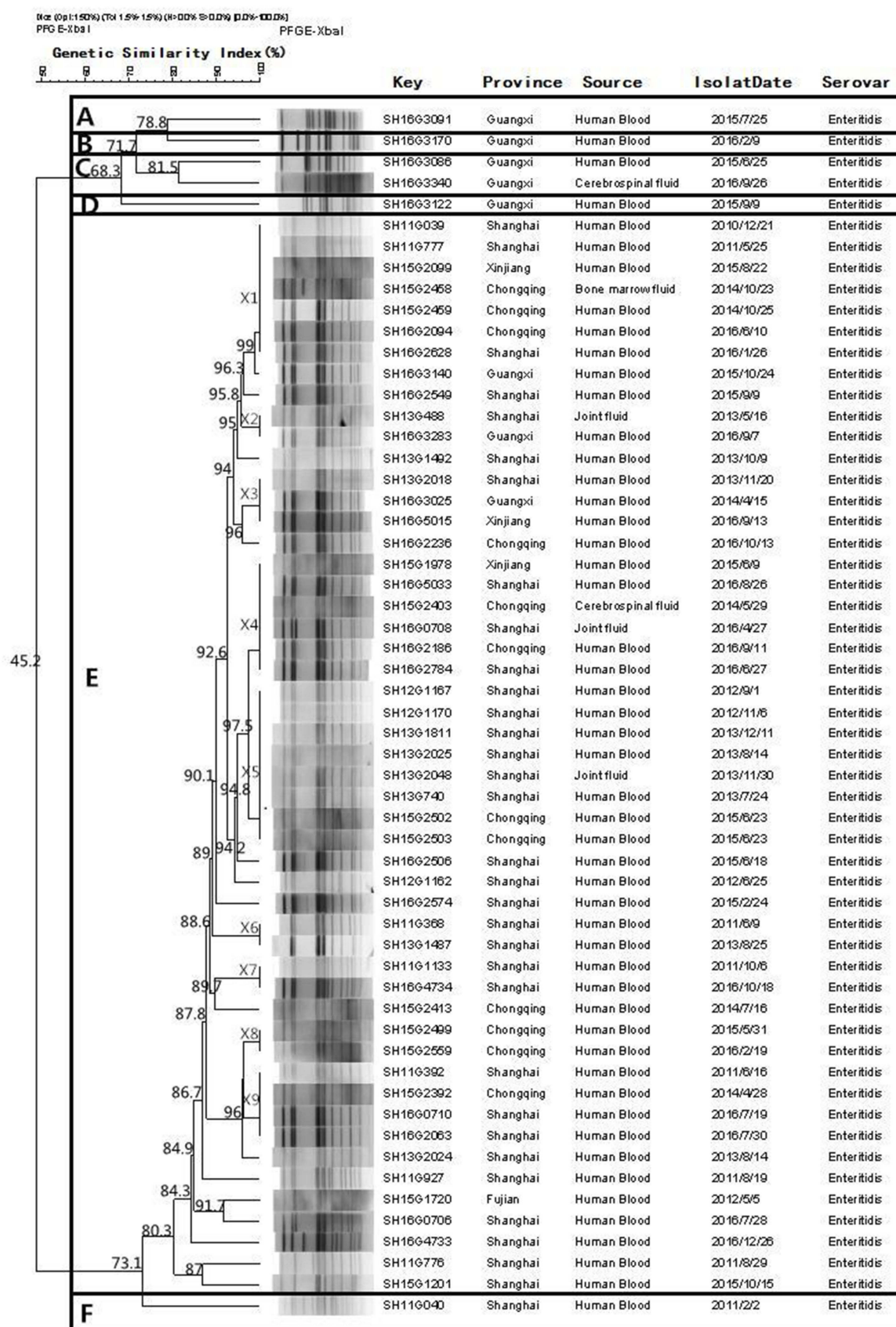
isolation of iNTS isolates fluctuated over time, but increased significantly during the warm seasons and in those with concentrated rainfall. This confirmed a relationship between the pathogens and climatic variables, in which an organism might persist for longer in such reservoirs.<sup>13</sup> These results suggested that improvements to drinking water infrastructure are required.

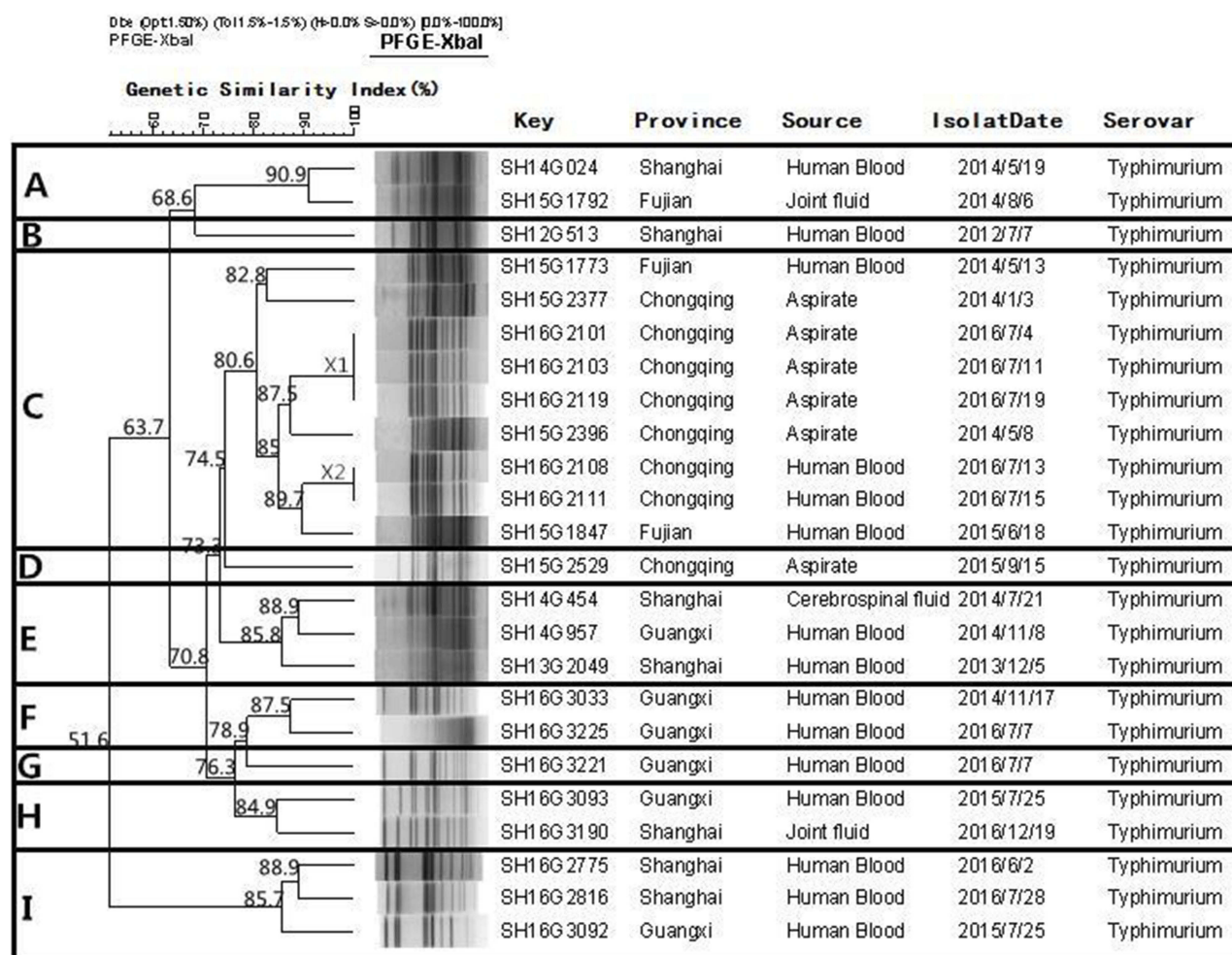
Our study found that *S. Enteritidis* and *S. Typhimurium* were the main serovars, causing approximately 45.5% of iNTS infections, which was similar to previous studies.<sup>20,21</sup> Furthermore, one of the most significant discoveries in our study was that *S. Choleraesuis* was an important serovar, representing a high proportion of the isolates identified. We believe it may be explained as follows: Pork production in China ranked first in the world and pork is very popular in the Chinese diet. *S. Choleraesuis* is particularly prone to infecting pork meat. This is consistent with reports from Taiwan and Thailand, where *S. Choleraesuis* is an important invasive pathogen that causes severe infections.<sup>22-24</sup> Although there is a lack of data pertaining to the prevalence of invasive NTS around the world, it would appear that there are regional discrepancies in the circulation of *Salmonella* serovars.<sup>25</sup>

Invasive *Salmonella* diseases are related to high case fatality rates (>20%) and prompt antimicrobial therapy is critical for this complex disease.<sup>1</sup> The present study identified a high resistance rate to streptomycin, sulfonamides, and nalidixic acid, which were significantly higher than those in North America, where the resistance rates of iNTS isolates to streptomycin, sulfonamides, and nalidixic acid were 8.8, 8.4, and 11.3% from 2003–2013.<sup>6</sup> Furthermore, we identified that a high proportion (53.4%) of the iNTS isolates displayed MDR; in particular, 80.9% of *S. Choleraesuis* and 70.8% of *S. Typhimurium* isolates exhibited MDR. These rates were higher compared with those in previous studies from United States and Kenya, in which the MDR rates were 9.0% and 4.0%, respectively.<sup>6,26</sup> High levels of drug resistance and MDR constitute a significant public health threat and are strongly associated with higher morbidity and mortality.<sup>1</sup>

A gradual decline in the percentage of iNTS MDR isolates was detected during the study period. This was accompanied by a gradual increase in the number of NAR, ciprofloxacin, and cefotaxime-resistant isolates. This phenomenon is most probably explained by the reduction in the prescription of traditional antibiotics and an increased dependence on ciprofloxacin and cefotaxime as the first-line drugs to treat clinical iNTS infections in China. This is similar to reports from







**Figure 4** Dendrogram of pulsed field gel electrophoresis (PFGE) patterns of 24 *Salmonella* Typhimurium isolates recovered from these five provinces. Nine clusters (A–I) were identified.

Kenya and United States, where resistance rates toward ceftriaxone (third-generation cephalosporin) increased during the study period.<sup>6,19,27</sup> Indeed, in China the rates of resistance of iNTS isolates to ciprofloxacin, cefotaxime, and ACSSuT pattern were 15.2%, 8.4%, and 3.9%, respectively. In particular, the resistant rate emerged early in the study from 0, rising up to 19.4% for ciprofloxacin and 13.9% for cefotaxime in 2016, which is of great concern. These resistant rates were much higher than those previously reported in the United States and Africa, where such drug resistance has been identified, but remains uncommon.<sup>19,28–30</sup> More importantly, co-resistance to ciprofloxacin, cefotaxime, ACSSuT pattern, and polymyxin B was identified in the iNTS isolates in the present study. These resistant phenotype isolates were detected among the uncommon *Salmonella* serovars, and most were found in infants that were  $\leq 1$  year of age, which makes the infections more life-threatening, reminding us that we should pay more concerns to

these uncommon serovars.<sup>19,22,31</sup> In our opinion, the emergence and high level resistance to ciprofloxacin, cefotaxime, and the ACSSuT pattern in iNTS are deeply worrying, because these drugs are considered critically important according to WHO criteria in human medicine and the ACSSuT pattern is difficult to treat,<sup>31,32</sup> which greatly limits clinically usable treatment options and leaving only more expensive drugs, such as carbapenems and tigecycline, as possible treatment options.

The main mechanisms of quinolone resistance in *Salmonella* are mediated by QRDR and PMQR genes.<sup>33</sup> Most isolates (98.2%; 112/114) contained mutations in the QRDR and 58.8% (67/114) of the isolates carried PMQR genes. The occurrence and diversity of mutations in the QRDR and PMQR genes in the present study were much higher than those reported for iNTS in other Asian and African regions.<sup>13,22,24,34</sup> Furthermore, in the present

study, multipoint mutations in QRDR and/or two or more in PMQR genes co-existing in a single isolate were frequently detected, whereas this has seldom been observed among iNTS isolates from other regions.<sup>1</sup> A single point mutation in QRDR will confer resistance to nalidixic acid and multipoint mutations in QRDR confer a high MIC value for ciprofloxacin, while mutations in the PMQR genes confer a modest decrease in susceptibility to ciprofloxacin.<sup>35</sup> This might explain why these isolates have a high nalidixic acid-resistance rate and a high proportion of them had high a MIC value for ciprofloxacin. In addition, among the substitutions Asp530→Asn, Ala538→Thr, and Ser458→Pro, found in the QRDR of *parE* in our study, Ser458→Pro has been observed in a few *parE* sequences from *S. Schwarzengrund* that were related with ciprofloxacin resistance.<sup>36</sup> Meanwhile, the substitutions Asp530→Asn and Ala538→Thr have not been previously reported, and were observed in the NAR and ciprofloxacin (MIC >4 mg/L) isolates; therefore, they are probably associated with fluoroquinolone resistance in these isolates. The *aac(6')-Ib-cr* gene was identified commonly in 33.3% (38/114) of isolates. Isolates carrying these PMQR genes will pose a potential threat because their resistance to ciprofloxacin will increase with the increase in chromosomal mutant selection.<sup>33,37</sup>

Similar to previous reports,<sup>20,22,34</sup> the cefotaxime-resistant isolates in the present study contained the relevant beta-lactamases [TEM-1, CTX-M-55, OXA-1, SHV-2, and CMY-2] and high proportions (80%) of cefotaxime-resistant isolates were observed to harbor at least two *bla* genes, which may be interpreted as a high level of resistance of cefotaxime, which has rarely been documented in iNTS before.<sup>1,38</sup>

Interestingly, there was no correlation between the antimicrobial resistance and particular clonal genotypes of *S. Enteritidis* and *S. Typhimurium*. The PFGE analysis showed that the isolates of *S. Enteritidis* from different regions of the PFGE profiles (X1, X2, X3, X4, and X5) shared a distinctly high genetic similarity (>92%). This indicated the potential for cross-infections and horizontal transmission. The results of the PFGE study reveal that genotype diversity exists in *S. Typhimurium* in China, which suggested that there are multiple, independent clones in different regions of the world.

## Conclusion

This study revealed that *S. Enteritidis*, *S. Choleraesuis*, and *S. Typhimurium* mainly cause iNTS infections; however, other serovars are also important. It is also a major threat to infant and elderly patients. An important alarm was the

emergence and high level of resistance to cefotaxime, ciprofloxacin, and the ACSSuT pattern in iNTS isolates, which will pose new challenges for clinicians. To better manage and prevent the spread of antimicrobial resistance, especially in China with its large population, emphasis should be placed on the need for comprehensive surveillance to acquire accurate epidemiological information to help treat iNTS infections.

## Acknowledgment

This work was supported by the National Key R&D Program of China (2017YFC1600101, 2017YFC1600104, 2018YFD0500500), a project supported by National Natural Science Foundation of China (31972762), a project supported by Guangdong Province Universities and Colleges Pearl River Scholar Funded Scheme (2018), the Pearl River S&T Nova Program of Guangzhou (201806010183), the Province Science and Technology of Guangdong Research Project (2017A020208055), Walmart Foundation (SA1703162), and National Broiler Industry Technology System Project (cARS-41-G16).

## Author contributions

Zhen Gu, Xiayidan Wufuer, Mingliu Wang, Meilian Huang, Jianhui Chen, Chunmei Jing and Xuebin Xu collected the clinical samples. Ming Liao, Jianmin Zhang and Mei Zeng designed the study. Zeqiang Zhan., Zhiying Xiong, Jianmin Zhang and Xuebin Xu carried out the experiment. Jianghong Meng, Zeqiang Zhan, Ming Liao, Jianmin Zhang and Mei Zeng analyzed the data. Zeqiang Zhan, Ming Liao, Jianmin Zhang and Mei Zeng and Xuebin Xu prepared the manuscript. All authors contributed to data analysis, drafting and revising the article, gave final approval of the version to be published, and agree to be accountable for all aspects of the work.

## Disclosure

The authors report no conflicts of interest in this work.

## References

1. Kariuki S, Gordon MA, Feasey N, Parry CM. Antimicrobial resistance and management of invasive Salmonella disease. *Vaccine*. 2015;33 (Suppl 3):C21–C29. doi:10.1016/j.vaccine.2015.03.102
2. Ao TT, Feasey NA, Gordon MA, Keddy KH, Angulo FJ, Crump JA. Global burden of invasive nontyphoidal Salmonella disease. *Emerg Infect Dis*. 2015;21(6). doi:10.3201/eid2101.140256
3. Vugia DJ, Samuel M, Farley MM, et al. Invasive Salmonella infections in the United States, FoodNet, 1996–1999: incidence, serotype distribution, and outcome. *Clin Infect Dis*. 2004;38(Suppl 3):S149–S156. doi:10.1086/381581



4. Deen J, von Seidlein L, Andersen F, Elle N, White NJ, Lubell Y. Community-acquired bacterial bloodstream infections in developing countries in south and southeast Asia: a systematic review. *Lancet Infect Dis*. 2012;12(6):480–487. doi:10.1016/S1473-3099(12)70028-2
5. Reddy EA, Shaw AV, Crump JA. Community-acquired bloodstream infections in Africa: a systematic review and meta-analysis. *Lancet Infect Dis*. 2010;10(6):417–432. doi:10.1016/S1473-3099(10)70072-4
6. Angelo KM, Reynolds J, Karp BE, Hoekstra RM, Scheel CM, Friedman C. Antimicrobial resistance among nontyphoidal salmonella isolated from blood in the United States, 2003–2013. *J Infect Dis*. 2015;214(10):1565–1570. doi:10.1093/infdis/jiw415
7. Gordon MA. Invasive nontyphoidal Salmonella disease: epidemiology, pathogenesis and diagnosis. *Curr Opin Infect Dis*. 2011;24(5):484–489. doi:10.1097/QCO.0b013e32834a9980
8. Zhan Z, Kuang D, Liao M, et al. Antimicrobial susceptibility and molecular typing of salmonella senftenberg isolated from humans and other sources in Shanghai, China, 2005 to 2011. *J Food Prot*. 2017;80(1):146–150. doi:10.4315/0362-028X.JFP-16-255
9. Muthumbi E, Morpeth SC, Ooko M, et al. Invasive Salmonellosis in Kilifi, Kenya. *Clin Infect Dis*. 2015;61(Suppl 4):S290–S301. doi:10.1093/cid/civ737
10. Phu Huong Lan N, Le Thi Phuong T, Nguyen Huu H, et al. Invasive non-typhoidal salmonella infections in Asia: clinical observations, disease outcome and dominant serovars from an infectious disease hospital in Vietnam. *PLoS Negl Trop Dis*. 2016;10(8):e0004857. doi:10.1371/journal.pntd.0004446
11. Crump JA, Sjolund-Karlsson M, Gordon MA, Parry CM. Epidemiology, clinical presentation, laboratory diagnosis, antimicrobial resistance, and antimicrobial management of invasive salmonella infections. *Clin Microbiol Rev*. 2015;28(4):901–937. doi:10.1128/CMR.00002-15
12. Panchalingam S, Antonio M, Hossain A, et al. Diagnostic microbiologic methods in the GEMS-1 case/control study. *Clin Infect Dis*. 2012;55(Suppl 4):S294–S302. doi:10.1093/cid/cis754
13. Kalonji LM, Post A, Phoba MF, et al. Invasive salmonella infections at multiple surveillance sites in the Democratic Republic of the Congo, 2011–2014. *Clin Infect Dis*. 2015;61(Suppl 4):S346–S353. doi:10.1093/cid/civ713
14. Jiang HX, Song L, Liu J, et al. Multiple transmissible genes encoding fluoroquinolone and third-generation cephalosporin resistance co-located in non-typhoidal Salmonella isolated from food-producing animals in China. *Int J Antimicrob Agents*. 2014;43(3):242–247. doi:10.1016/j.ijantimicag.2013.12.005
15. Menezes GA, Harish BN, Khan MA, Goessens WH, Hays JP. Antimicrobial resistance trends in blood culture positive Salmonella Typhi isolates from Pondicherry, India, 2005–2009. *Clin Microbiol Infect*. 2012;18(3):239–245. doi:10.1111/j.1469-0691.2011.03546.x
16. Qiao J, Zhang Q, Alali WQ, et al. Characterization of extended-spectrum beta-lactamases (ESBLs)-producing Salmonella in retail raw chicken carcasses. *Int J Food Microbiol*. 2017;248:72–81. doi:10.1016/j.ijfoodmicro.2017.02.016
17. Nguyen DTA, Kanki M, Nguyen PD, et al. Prevalence, antibiotic resistance, and extended-spectrum and AmpC  $\beta$ -lactamase productivity of Salmonella isolates from raw meat and seafood samples in Ho Chi Minh City, Vietnam. *Int J Food Microbiol*. 2016;236:115–122. doi:10.1016/j.ijfoodmicro.2016.07.017
18. Egale T, Birungi J, Asrat D, et al. Genetic markers associated with resistance to beta-lactam and quinolone antimicrobials in non-typhoidal Salmonella isolates from humans and animals in central Ethiopia. *Antimicrob Resist Infect Control*. 2017;6:13. doi:10.1186/s13756-017-0171-6
19. Feasey NA, Masesa C, Jassi C, et al. Three epidemics of invasive multidrug-resistant salmonella bloodstream infection in Blantyre, Malawi, 1998–2014. *Clin Infect Dis*. 2015;61(Suppl 4):S363–S371. doi:10.1093/cid/civ691
20. Lunguya O, Lejon V, Phoba MF, et al. Antimicrobial resistance in invasive non-typhoid Salmonella from the Democratic Republic of the Congo: emergence of decreased fluoroquinolone susceptibility and extended-spectrum beta lactamases. *PLoS Negl Trop Dis*. 2013;7(3):e2103. doi:10.1371/journal.pntd.0002103
21. Kariuki S, Onsare RS. Epidemiology and genomics of invasive nontyphoidal salmonella infections in Kenya. *Clin Infect Dis*. 2015;61(Suppl 4):S317–S324. doi:10.1093/cid/civ711
22. Ko WC, Yan JJ, Yu WL, et al. A new therapeutic challenge for old pathogens: community-acquired invasive infections caused by ceftriaxone- and ciprofloxacin-resistant Salmonella enterica serotype choleraesuis. *Clin Infect Dis*. 2005;40(2):315–318. doi:10.1086/426593
23. Jones TF, Ingram LA, Cieslak PR, et al. Salmonellosis outcomes differ substantially by serotype. *J Infect Dis*. 2008;198(1):109–114. doi:10.1086/588823
24. Luk-In S, Chatsuwat T, Pulsrikarn C, Bangtrakulnonth A, Rirerm U, Kulwichit W. High prevalence of ceftriaxone resistance among invasive Salmonella enterica serotype Choleraesuis isolates in Thailand: the emergence and increase of CTX-M-55 in ciprofloxacin-resistant S. Choleraesuis isolates. *Int J Med Microbiol*. 2018;308(4):447–453. doi:10.1016/j.ijmm.2018.03.008
25. Galanis E, Lo Fo Wong DM, Patrick ME, et al. Web-based surveillance and global Salmonella distribution, 2000–2002. *Emerg Infect Dis*. 2006;12(3):381–388. doi:10.3201/eid1205.050854
26. Kwambana-Adams B, Darboe S, Nabwera H, et al. Salmonella infections in The Gambia, 2005–2015. *Clin Infect Dis*. 2015;61(Suppl 4):S354–S362. doi:10.1093/cid/civ781
27. Onoko M, Kariuki S, Muturi-Kioi V, et al. Emergence of community-acquired, multidrug-resistant invasive nontyphoidal salmonella disease in Rural Western Kenya, 2009–2013. *Clin Infect Dis*. 2015;61(Suppl 4):S310–S316. doi:10.1093/cid/civ674
28. Helms M, Simonsen J, Molbak K. Quinolone resistance is associated with increased risk of invasive illness or death during infection with Salmonella serotype Typhimurium. *J Infect Dis*. 2004;190(9):1652–1654. doi:10.1086/424570
29. Crump JA, Medalla FM, Joyce KW, et al. Antimicrobial resistance among invasive nontyphoidal Salmonella enterica isolates in the United States: National Antimicrobial Resistance Monitoring System, 1996 to 2007. *Antimicrob Agents Chemother*. 2011;55(3):1148–1154. doi:10.1128/AAC.01333-10
30. Vlieghe ER, Phe T, De Smet B, et al. Azithromycin and ciprofloxacin resistance in Salmonella bloodstream infections in Cambodian adults. *PLoS Negl Trop Dis*. 2012;6(12):e1933. doi:10.1371/journal.pntd.0001933
31. Fenstemacher P. Practice guidelines for the management of infectious diarrhea. *Clin Infect Dis*. 2001;32(3):331–351. doi:10.1086/318514
32. Helms M, Ethelberg S, Mølbak K, Group TDS. International Salmonella Typhimurium DT104 infections, 1992–2001. *Emerg Infect Dis*. 2005;11(6):859–867. doi:10.3201/eid1106.041017
33. Ferrari R, Galiana A, Cremades R, et al. Plasmid-mediated quinolone resistance (PMQR) and mutations in the topoisomerase genes of Salmonella enterica strains from Brazil. *Braz J Microbiol*. 2013;44(2):651–656. doi:10.1590/S1517-8382201300200046
34. Mather AE, Phuong TLT, Gao Y, et al. New variant of multidrug-resistant salmonella enterica serovar typhimurium associated with invasive disease in immunocompromised patients in Vietnam. *MBio*. 2018;9(5). doi:10.1128/mBio.01056-18
35. Redgrave LS, Sutton SB, Webber MA, Piddock LJ. Fluoroquinolone resistance: mechanisms, impact on bacteria, and role in evolutionary success. *Trends Microbiol*. 2014;22(8):438–445. doi:10.1016/j.tim.2014.04.007

36. Baucheron S, Chaslus-Dancla E, Cloeckaert A, Chiu CH, Butaye P. High-level resistance to fluoroquinolones linked to mutations in *gyrA*, *parC*, and *parE* in *Salmonella enterica* serovar Schwarzengrund isolates from humans in Taiwan. *Antimicrob Agents Chemother*. 2005;49(2):862–863. doi:10.1128/AAC.49.2.862-863.2005
37. Robicsek A, Strahilevitz J, Jacoby GA, et al. Fluoroquinolone-modifying enzyme: a new adaptation of a common aminoglycoside acetyltransferase. *Nat Med*. 2006;12(1):83–88. doi:10.1038/nm1347
38. Antunes NT, Frase H, Toth M, Mobashery S, Vakulenko SB. Resistance to the third-generation cephalosporin ceftazidime by a deacylation-deficient mutant of the TEM beta-lactamase by the uncommon covalent-trapping mechanism. *Biochemistry*. 2011;50(29):6387–6395. doi:10.1021/bi200403e

## Infection and Drug Resistance

Dovepress

### Publish your work in this journal

Infection and Drug Resistance is an international, peer-reviewed open-access journal that focuses on the optimal treatment of infection (bacterial, fungal and viral) and the development and institution of preventive strategies to minimize the development and spread of resistance. The journal is specifically concerned with the epidemiology of

antibiotic resistance and the mechanisms of resistance development and diffusion in both hospitals and the community. The manuscript management system is completely online and includes a very quick and fair peer-review system, which is all easy to use. Visit <http://www.dovepress.com/testimonials.php> to read real quotes from published authors.

Submit your manuscript here: <https://www.dovepress.com/infection-and-drug-resistance-journal>