

# Multiplex loop-mediated isothermal amplification (multi-LAMP) assay for rapid detection of *mcr-1* to *mcr-5* in colistin-resistant bacteria

This article was published in the following Dove Press journal:  
*Infection and Drug Resistance*

Lan-Lan Zhong,<sup>1,2,\*</sup> Qian Zhou,<sup>3,\*</sup>  
Cui-Yan Tan,<sup>3,\*</sup> Adam P Roberts,<sup>4,5</sup>  
Mohamed Abd El-Gawad El-  
Sayed Ahmed,<sup>1,2,6</sup> Guanping Chen,<sup>1,2</sup>  
Min Dai,<sup>7</sup> Fan Yang,<sup>8</sup> Yong Xia,<sup>9</sup>  
Kang Liao,<sup>10</sup> Yingjian Liang,<sup>3</sup>  
Yongqiang Yang,<sup>1,11</sup> Siyuan Feng,<sup>1,2</sup>  
Xiaobin Zheng,<sup>3,\*</sup> Guo-Bao Tian<sup>1,2,\*</sup>

<sup>1</sup>Program in Pathobiology, The Fifth Affiliated Hospital, Zhongshan School of Medicine, Sun Yat-Sen University, Guangdong 519000, People's Republic of China; <sup>2</sup>Ministry of Education, Key Laboratory of Tropical Diseases Control, Sun Yat-sen University, Guangzhou 510080, People's Republic of China; <sup>3</sup>Department of Respiratory Medicine, The Fifth Affiliated Hospital of Sun Yat-sen University, Zhuhai 519000, People's Republic of China; <sup>4</sup>Department of Tropical Disease Biology, Liverpool School of Tropical Medicine, Liverpool, L3 5QA, UK; <sup>5</sup>Centre for Drugs and Diagnostics, Liverpool School of Tropical Medicine, Liverpool L3 5QA, UK; <sup>6</sup>Department of Microbiology and Immunology, Faculty of Pharmaceutical Sciences and Drug Manufacturing, Misr University for Science and Technology (MUST), Cairo, Egypt; <sup>7</sup>School of Laboratory Medicine, Chengdu Medical College, Chengdu 610500, People's Republic of China; <sup>8</sup>Department of Microbiology, School of Basic Medical Science, Xinxiang Medical University, Xinxiang 453003, People's Republic of China; <sup>9</sup>Department of Clinical Laboratory Medicine, The Third Affiliated Hospital of Guangzhou Medical University, Guangzhou 510150, People's Republic of China; <sup>10</sup>Department of Clinical Laboratory, The First Affiliated Hospital of Sun Yat-Sen University, Guangzhou 510080, People's Republic of China; <sup>11</sup>School of Pharmaceutical Sciences (Shenzhen), Sun Yat-sen University, Guangzhou 510006, People's Republic of China

\*These authors contributed equally to this work

Correspondence: Guo-Bao Tian  
Zhongshan School of Medicine, Sun Yat-sen University,  
74 Zhongshan 2nd Road, Guangzhou 510080, People's  
Republic of China  
Tel +860 208 733 5387  
Fax +860 208 733 5387  
Email [tiangb@mail.sysu.edu.cn](mailto:tiangb@mail.sysu.edu.cn)

Xiaobin Zheng  
Department of Respiratory Medicine, Fifth Affiliated  
Hospital of Sun Yat-sen University, 52 East Meihua  
Road, Zhuhai City 510080, People's Republic of China  
Tel +860 756 252 8733  
Email [zhxbn@sysu.edu.cn](mailto:zhxbn@sysu.edu.cn)

**Purpose:** The discovery of the plasmid-mediated colistin resistance genes, *mcr*, revealed a mechanism of transmission of colistin resistance, which is a major, global public health concern especially among individuals infected with carbapenem-resistant Gram-negative bacteria. To monitor the spread and epidemiology of *mcr* genes, a convenient and reliable method to detect *mcr* genes in clinical isolates is needed, especially in the primary care institutions. This study aimed to establish a restriction endonuclease-based multiplex loop-mediated isothermal amplification (multi-LAMP) assay to detect *mcr* genes (*mcr-1* to *mcr-5*) harbored by colistin-resistant bacteria.

**Methods:** A triple-LAMP assay for *mcr-1*, *mcr-3*, and *mcr-4* and a double-LAMP assay for *mcr-2* and *mcr-5* were established. The sensitivity and specificity of the LAMP reactions were determined via electrophoresis and visual detection.

**Results:** The sensitivity of the LAMP assay was 10-fold greater than that of PCR, with high specificity among the screened primers. Specific *mcr* genes were distinguished in accordance with band numbers and the fragment length of the digested LAMP amplification products. Furthermore, the LAMP assay was confirmed as a rapid and reliable diagnostic technique upon application for clinical samples, and the results were consistent with those of conventional PCR assay.

**Conclusion:** The multi-LAMP assay is a potentially promising method to detect *mcr* genes and will, if implemented, help prevent infections by drug-resistant bacteria in primary-care hospitals due to rapid and reliable surveillance. To our knowledge, this is the first study to report the application of LAMP to detect *mcr-2* to *mcr-5* genes and the first time that multi-LAMP has been applied to detect *mcr* genes.

**Keywords:** *mcr* genes, colistin resistance, multi-LAMP, rapid detection, enzyme digestion

## Introduction

The misuse of antibiotics is the primary factor selecting for antibiotic resistance, followed by the unnecessary supplementation of animal feed with antibiotics.<sup>1</sup> Among the various types of antibiotics, colistin, a last resort chemotherapeutic option against carbapenem-resistant bacteria, is faced with a growing clinical challenge of antibiotic resistance.<sup>2</sup> Until recently, colistin resistance was believed to be chromosomally mediated; however, the discovery of plasmid-mediated colistin resistance via *mcr-1* in 2015 revealed colistin resistance was capable of horizontal transmission.<sup>3,4</sup> Subsequent studies reported that *mcr-1* is expressed in many bacteria worldwide.<sup>3,5-7</sup> Moreover, new *mcr* genotypes were reported, and eight more *mcr* genes (*mcr-2* to *mcr-9*)<sup>8</sup> have been reported since the

discovery of *mcr-1*.<sup>9–15</sup> Currently, PCR-based methods are the most widely adopted to detect *mcr* genes,<sup>16</sup> however, owing to the presence of several genotypes of *mcr* genes and their ability to undergo horizontal gene transfer; PCR assays are limited in clinical practice, including the primary-care hospitals and the basic quarantine stations. Therefore, a rapid, efficient, reliable, and economical method to detect *mcr* genes is urgently required.

Loop-mediated isothermal amplification (LAMP) is a nucleic acid amplification method conducted at a constant temperature, based on auto-cycling strand displacement of DNA synthesis by Bst DNA polymerase.<sup>17</sup> It is a promising method to detect nucleic acids, with advantages including the non-requirement of thermo-cycling instruments, higher sensitivity, and less time-consumption. With the rapid development of the LAMP method, studies have reported increasing applications of LAMP, including nucleic acid detection from bacteria,<sup>18,19</sup> viruses,<sup>20</sup> and parasites.<sup>21–23</sup> Zou et al first reported the application of LAMP to detect *mcr-1*, achieving higher sensitivity than traditional PCR.<sup>24</sup> Imirzalioglu et al used the eazypex SuperBug *mcr-1* kit, developed to rapidly detect *mcr-1*.<sup>25</sup> However, owing to the multiple *mcr* genotypes, a single LAMP cannot detect all potential target genes, thereby yielding incomplete information for nucleic acid detection.

In this study, we aimed to develop a restriction endonuclease-based multi-LAMP method to detect multiple *mcr* genes. We established a triple-LAMP system for the most extensively propagated *mcr* genes (*mcr-1*, *mcr-3*, and *mcr-4*) in People's Republic of China. A double-LAMP system for *mcr-2* and *mcr-5* has also been established to detect all *mcr* genes (*mcr-6* to *mcr-9* had not been discovered when this study started). We designed and screened 5 sets of primers for each *mcr-1* to *mcr-5* genes and assessed the sensitivity and specificity of the assay through electrophoresis and visual detection, using clinical samples from hospitals in Guangzhou, People's Republic of China. Primers for this assay were modified with restriction endonucleases and were used combinatorially for the multi-LAMP assay, and specific *mcr* genes were detected from the band numbers and fragment lengths of the digested LAMP-amplified products.

## Materials and methods

### Primers design

Sequences of *mcr-1* to *mcr-5* genes were downloaded from GenBank database: *mcr-1* (accession number: KX886345.1); *mcr-2* (accession number: NG\_051171.1); *mcr-3* (accession

number: MG026622.1); *mcr-4* (accession number: MG026621.1); and *mcr-5* (accession number: MG241339.1). To determine the optimum primers, 3 primer sets for each gene were designed by using Primer Explorer (version 5, <http://primerexplorer.jp/lampv5e/index.html>) (Table S1). Each primer set comprises 6 primers: a forward inner primer (FIP), backward inner primer (BIP), outer forward primer (F3), outer backward primer (B3), and two loop primers (LF and LB) to accelerate the LAMP reaction.<sup>17</sup> All primers were synthesized by Tianyi Biotech Co. (Dongguan, People's Republic of China).

### Samples preparation

In our study, five positive controls harboring *mcr-1* to *mcr-5* genes were used, wherein *mcr-1*, *mcr-3*, and *mcr-4* were screened in our laboratory, *mcr-2* was obtained from South China Agricultural University, and *mcr-5* was obtained from China Agricultural University (Table 1). Three multi-drug-resistant bacterial strains (two *Escherichia coli* and one *Klebsiella pneumonia*) devoid of *mcr* genes, identified via PCR in our previous studies,<sup>26</sup> were used as negative controls. All strains were stored in 30% (w/v) glycerol broth at  $-80^{\circ}\text{C}$ . The strains were cultured in Luria-Bertani culture medium (OXOID, Hampshire, UK) supplemented with 2% colistin at  $37^{\circ}\text{C}$  overnight. Bacterial genomic DNA was extracted using the boiling method and recovered in 200  $\mu\text{L}$  RNase-free ddH<sub>2</sub>O. pMD19-T vector containing *mcr-1* to *mcr-5* DNA fragments was constructed separately, as previously described.<sup>27,28</sup> The recombinant plasmids were diluted 10-fold serially to yield  $10^8$  copies/ $\mu\text{L}$  to  $10^2$  copies/ $\mu\text{L}$ .

### LAMP reaction

The LAMP reaction was carried out in a 25  $\mu\text{L}$  reaction mixture that contained 12.5  $\mu\text{L}$  LAMP-Reaction Mix [20 mM Tris-HCl (pH 8.8), 10 mM (NH<sub>4</sub>)<sub>2</sub>SO<sub>4</sub>, 8 mM

**Table 1** *mcr* genes and other resistant genes used in this study

NO.	Genetic types	Source	Gene Role
1	<i>mcr-1</i>	<i>E. coli</i>	Positive control
2	<i>mcr-2</i>	Plasmid	Positive control
3	<i>mcr-3</i>	<i>E. coli</i>	Positive control
4	<i>mcr-4</i>	<i>E. coli</i>	Positive control
5	<i>mcr-5</i>	Plasmid	Positive control
6	<i>bla</i> <sub>KPC-2</sub>	<i>K. pneumonia</i>	Negative control
7	<i>bla</i> <sub>NDM-1</sub>	<i>E. coli</i>	Negative control
8	<i>bla</i> <sub>CTX-M-9</sub>	<i>E. coli</i>	Negative control

MgSO<sub>4</sub>, 10 mM KCl, 0.8 M betaine, 0.1% Tween-20, 1.4 mM deoxy-ribonucleotide triphosphates (dNTP)], 1 µL Bst 2.0 polymerase (New England Biolabs, 8,000 units/mL), 1.25 µL primer mix (2 µM each of FIP and BIP, 0.25 µM each of F3 and B3, and 1 µM each of LF and LB) (Table 2), 8.25 µL nuclease-free water, and 2 µL DNA lysate. The mixture was incubated for 60 mins at 64°C in a heated, thermostatically controlled water bath.

## PCR assay

A PCR assay was performed to compare its sensitivity and the clinical detection rates with those of the LAMP assay. Each plasmid sample was amplified in 20 µL reaction mixtures containing 10 µL PCR Master Mix (Tiangen Biotech Co., Ltd., Beijing, People's Republic of China), 400 pM primers (Table 2), and 1 µL DNA template. The cycling conditions were as follows: 3 mins at 95°C; 30 cycles of 30 s at 95°C, 30 s at 55°C, and 30 s at 72°C; 5 mins at 72°C. The PCR products were analyzed electrophoretically on a 2% agarose gel, followed by ethidium bromide staining. Images were obtained using the (Bio-Rad, Hercules, CA, USA).

## Detection of LAMP products

LAMP products were detected using two methods: visual detection<sup>29</sup> and electrophoresis. For visual detection, SYBR Green I was added into the LAMP products, where the positive reactions yielded green coloration; while the negative ones gave yellow. For electrophoresis, the LAMP products were stained with GoldView TM, analyzed electrophoretically on a 2% agarose gel, and photographed.

## Multi-LAMP detection

The triple-LAMP assay was performed using a set of three primer pairs each, for *mcr-1*, *mcr-3*, and *mcr-4*. The double-LAMP assay was performed using a set of three primer pairs each, for *mcr-2* and *mcr-5*. The amplification was carried out in a 25 µL reaction mixture as the LAMP reaction. Both of the amplification products of the triple-LAMP and double-LAMP were diluted by twofold, digested using Thermo Scientific Fast Digest Hind at 37°C for 15 mins and then analyzed electrophoretically on a 2% agarose gel. Through the electrophoresis results, different types of *mcr* genes were distinguished based on the band numbers and band locations on electropherograms.

## Results

### Primer selection and modification

Fifteen primer sets were designed to detect *mcr-1* to *mcr-5* (3 sets for each gene) as shown in Table S1. To determine the optimum primers, LAMP reactions using different primer sets were conducted under the same conditions, and electropherograms of the LAMP products were compared. According to the electrophoretic analysis, the optimum primer sets were selected. The locations and sequences of selected optimal primer sets are shown in Figure 1. Additionally, for the multi-LAMP, we modified the selected optimal FIPs and BIPs by inserting the Hind restriction sites between F1c and F2 and between B1c and B2, respectively (Table 2).

### Sensitivity of the LAMP assay

To determine the sensitivity of the LAMP assay, purified genomic DNA templates were detected via 10-fold serial dilution of known copies numbers of DNA template molecules. Comparative PCR assays were also conducted using the same DNA templates. LAMP products were further analyzed visually (Figure 2A–E) and via agarose gel electrophoresis (Figure 2F–O). These results indicated that the detection limit of the LAMP assay was 10<sup>4</sup> copies/µL for *mcr-1*, *mcr-2*, *mcr-4* and *mcr-5*, and 10<sup>5</sup> copies/µL for *mcr-3*. Comparatively, agarose gel electrophoresis was conducted for the PCR products, wherein the detection limits were 10<sup>5</sup> copies/µL for *mcr-1* to *mcr-5* genes. All reactions were carried out at least in triplicate.

### Specificity of the LAMP assay

Assay specificity was assessed via direct visual detection through the addition of SYBR Green I during the reaction, followed by confirmatory evaluation via agarose gel electrophoresis. Three non-*mcr* genes (*bla*<sub>KPC-2</sub>, *bla*<sub>NDM-1</sub>, and *bla*<sub>CTX-M-9</sub>) were analyzed in addition to *mcr-1* to *mcr-5* genes. Our results revealed that *mcr-1* was positively identified via LAMP only when amplification was performed using the *mcr-1* primer set, while all non-*mcr-1* genes tested negative (Figure 3A and F). The *mcr-2* to *mcr-5* genes were similarly analyzed, indicating that this LAMP method was specific for *mcr-1* to *mcr-5* genes (Figure 3B–E and G–J). All reactions were carried out at least in triplicate.

### Multi-LAMP detection of *mcr* genes

To generate the multi-LAMP system, endonuclease analysis was applied. For cleavage sites in *mcr-1* to *mcr-5* genes,

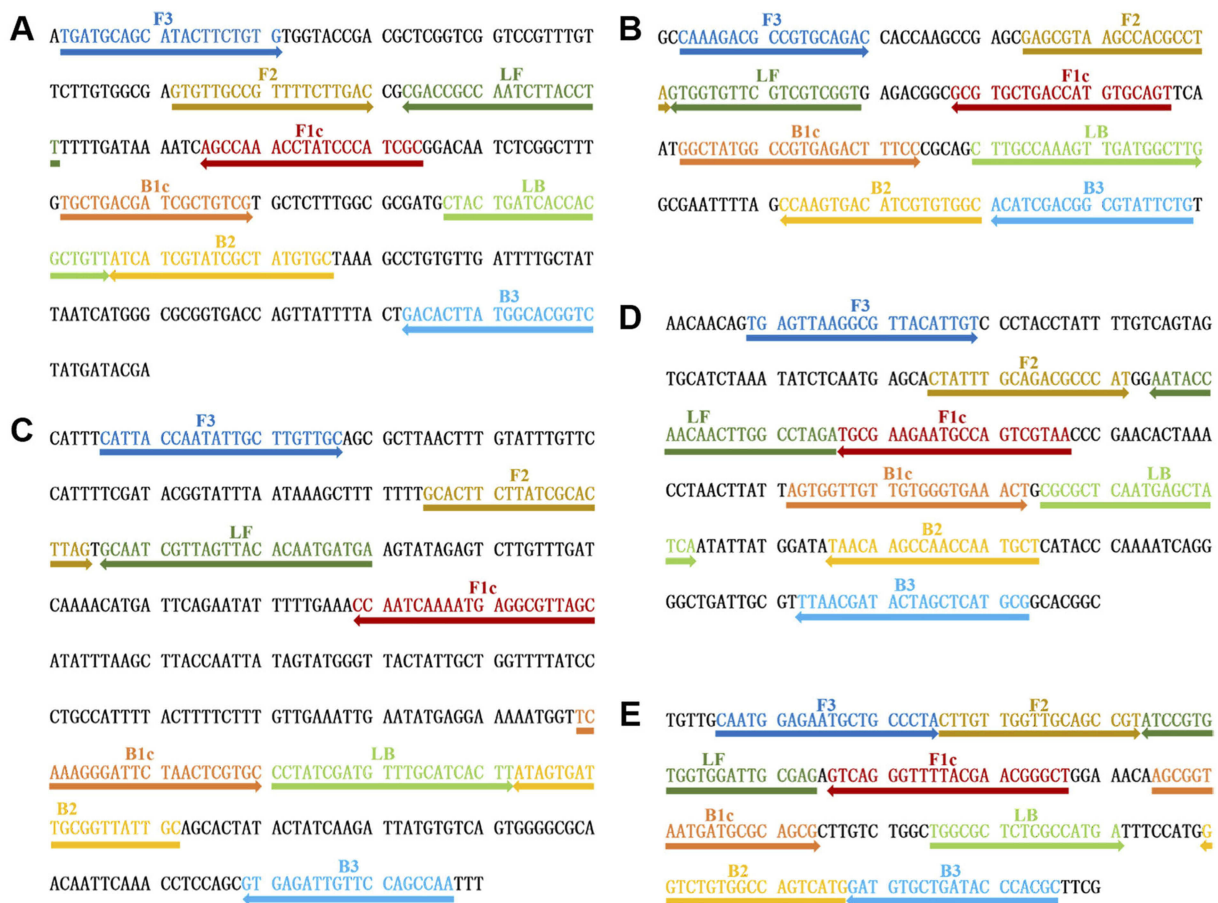
**Table 2** The primer sequences of multi-LAMP and PCR for *mcr-1* to *mcr-5* genes

Target genes	multi-LAMP		Reference	PCR		Reference
	Primers	Sequences(5'-3') <sup>a</sup>		Primers	Sequences(5'-3')	
<i>mcr-1</i>	F3	TGATGCAGCATACTTCTGTG	This study	F	AGTCCGTTTGTCTCTGTGGC	16
	B3	GACCGTGCCATAAGTGTC				
	FIP	GCGATGGGATAGGTTTGGCTAAGCTTGCTGTGTTGCCGTTTCTTGAC		R	AGATCCTTGGTCTCGGCTTG	
	BIP	TGCTGACGATCGCTGTCGAAGCTTGACATAGCGATACGATGAT				
	LF	AAGGTAAGATTGGCGGTCG				
	LB	CTACTGATCACCACGCTGTT				
<i>mcr-2</i>	F3	CAAAGACGCCGTGCAGAC	This study	F	CAAGTGTGTTGGTCGCAGTT	16
	B3	CAGAATACGCCGTGCATGT				
	FIP	ACTGCACATGGTCAGCAGCAAGCTTGAGCGTAAGCCACGCCTA		R	TCTAGCCCCGACAAGCATAACC	
	BIP	GGCTATGCCCGTGAGACTTTCGAAGCTTGCCACACGATGTCACCTGG				
	LF	ACCGACGACGAACACCAC				
	LB	CTTGCCAAAAGTTGATGGCTTG				
<i>mcr-3</i>	F3	CATTACCAATATTGCTTGTTC	This study	F	AAATAAAAAATTGTTCCGCTTATG	16
	B3	TTGGCTGGAACAATCTCAC				
	FIP	GCTAACGCCCTCATTTTGATTGGAAGCTTGCACTTCTTATCGCACTTAG		R	AATGGAGATCCCCGTTTTT	
	BIP	TCAAAGGGATTCTAACTCGTGCAAGCTTGCAATAACCGCAATCACTAT				
	LF	TCATTGTGTAACCTAACGATTGC				
	LB	CCTATCGATGTTTGCATCACTT				
<i>mcr-4</i>	F3	TGAGTTAAGGCGTTACATTGT	This study	F	TCACTTTTCATCACTGCGTTG	16
	B3	CGCATGAGCTAGTATCGTTAA				
	FIP	TIACGACTGGCATTCTTCGCAAGCTTCTATTTCGAGAGCGCCAT		R	TTGGTCCATGACTACCAATG	
	BIP	AGTGTTGTTGTGGGTGAACCTAAGCTTAGCATTGGTTGGCTTGTA				
	LF	TCTAGGCCAAGTTGTTGGTATT				
	LB	CGCGCTCAATGAGCTATCA				
<i>mcr-5</i>	F3	CAATGGAGAATGCTGCCCTA	This study	F	ATGCGGTTGTCTGCATTATC	16
	B3	GCGTGGGTATCAGCACATC				
	FIP	AGCCCGTTCGTAACCCCTGACAGCTTCTTGTGTTGTCAGCCGT		R	TCATTGTGTTGTCTCTTTCTG	
	BIP	AGCGGTAATGATGCGCAGCGAAGCTTCACTGACTGGCCACAGACC				
	LF	CTCGCAATCCACCACACGGAT				
	LB	TGGCGCTCTCGCCATGA				

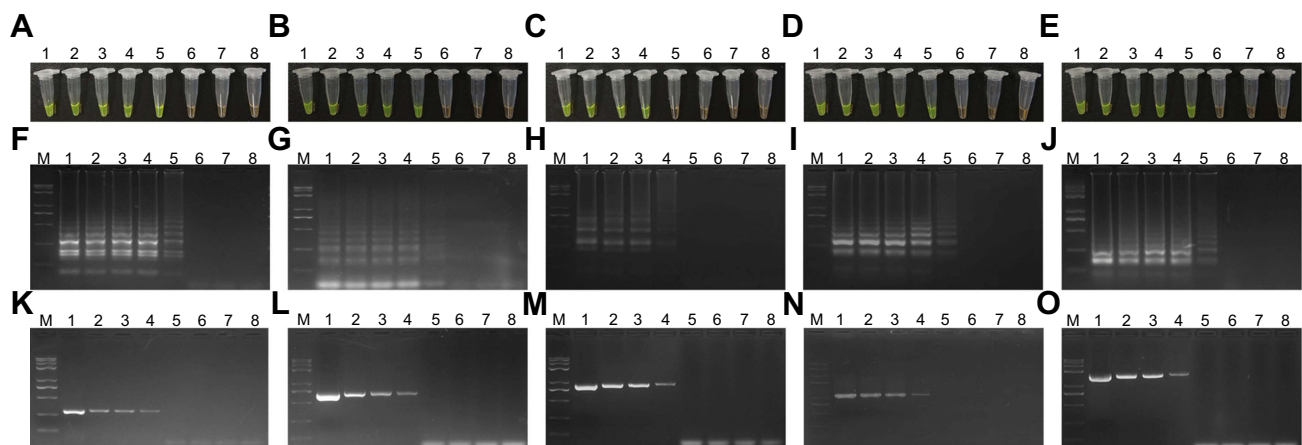
**Note:** <sup>a</sup>Underlining indicates the restriction enzyme sites of *Hind*.

**Abbreviations:** F3, Forward Outer Primer; B3, Backward Outer Primer; FIP, Forward Internal Primer; BIP, Backward Internal Primer; LF, Loop Forward Primer; LB, Loop Backward Primer; F, Forward Primer; R, Reverse Primer.





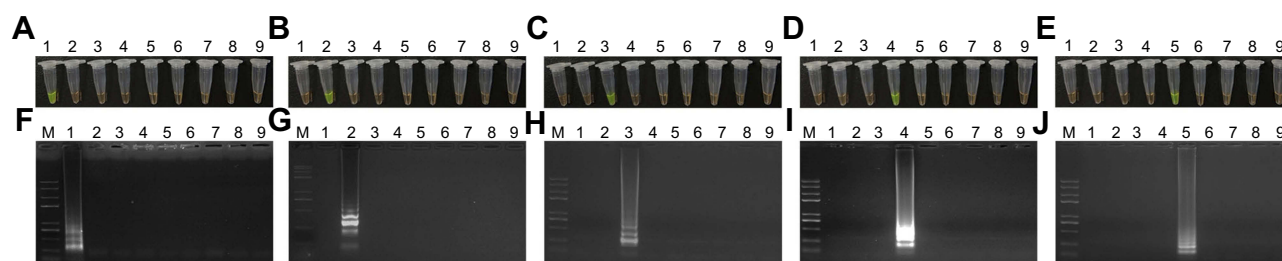
**Figure 1** Locations and sequences of *mcr* genes used to design multi-LAMP primers. (A–E) The nucleotide sequences of the target strands of *mcr-1* to *mcr-5* genes. Right arrows indicate the original sequences and left arrows indicate the complementary sequences.



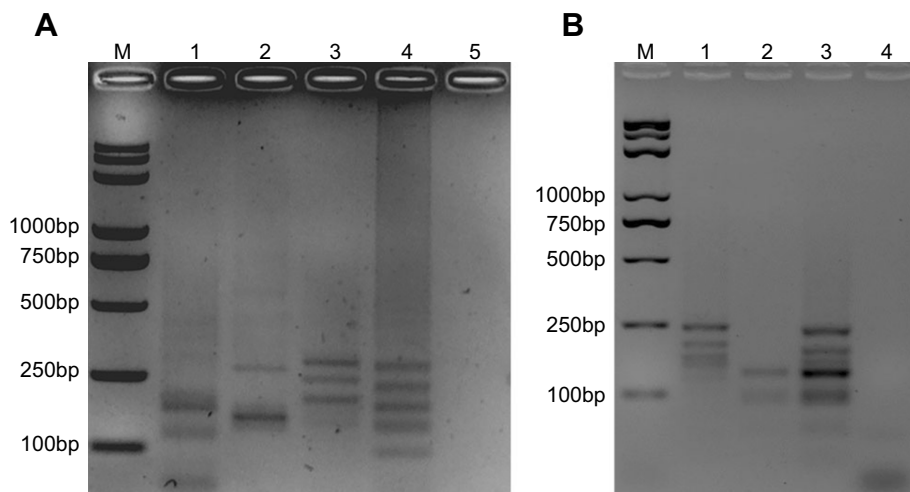
**Figure 2** Sensitivity of the loop-mediated isothermal amplification (LAMP) and polymerase chain reaction (PCR) assays. (A–E) Visual detection of the LAMP amplification products of *mcr-1* to *mcr-5* genes with SYBR Green I. (F–J) Agarose gel electrophoresis analysis of products of the PCR assay and the corresponding LAMP assay. Lane M, Trans 2K plus II DNA marker; Lanes 1–7, serial 10-fold dilutions of templates from  $10^8$  copies/ $\mu$ L to  $10^2$  copies/ $\mu$ L; Lane 8, negative (water).

enzyme digestion was performed using Hind restriction enzyme. For the triple-LAMP, the target sequence of *mcr-1* was cleaved into 2 segments, *mcr-3* into 2 segments and

*mcr-4* into 3 segments (Figure 4A). For the double-LAMP, the target sequence of *mcr-2* was cleaved into 3 segments and *mcr-5* into 2 segments (Figure 4B). The sizes of the



**Figure 3** Specificity of the loop-mediated isothermal amplification (LAMP) assays. (A–E) Visual detection of the LAMP amplification products with SYBR Green I. (F–J) Agarose gel electrophoresis of the LAMP products. Lane M: Trans 2K plus II DNA marker; Lanes 1–5: *mcr-1* to *mcr-5* genes; Lane 6: *bla*<sub>KPC-2</sub>; Lane 7: *bla*<sub>NDM-1</sub>; Lane 8: *bla*<sub>CTX-M-9</sub>; Lane 9: negative (water).



**Figure 4** Multiplex loop-mediated isothermal amplification (multi-LAMP) detection. Agarose gel electrophoresis and enzyme digestion analysis of *mcr* genes was performed for the multi-LAMP products on 2% agarose gel. (A) Lane M, Trans 2K plus II DNA marker; Lane 1, restriction enzyme digestion of *mcr-1* multi-LAMP products, 170 bp, 115 bp respectively; Lane 2, restriction enzyme digestion of *mcr-3* multi-LAMP products, 260 bp, 155 bp respectively; Lane 3, restriction enzyme digestion of *mcr-4* multi-LAMP product, 270, 230, and 185 bp respectively; Lane 4, restriction enzyme digestion of mixed *mcr-1*, *mcr-3*, and *mcr-4* multi-LAMP products, 260, 225, 170, 120, and 90 bp; Lane 5, negative (water). (B) Lane M, Trans 2K plus II DNA marker; Lane 1, restriction enzyme digestion of *mcr-2* multi-LAMP products, 220, 175, and 140 bp respectively; Lane 2, restriction enzyme digestion of *mcr-5* multi-LAMP products, 120 bp, 90 bp respectively; Lane 3, restriction enzyme digestion of mixed *mcr-2* and *mcr-5* multi-LAMP products, 215, 170, 140, 120, and 90 bp, respectively; Lane 4: negative (water).

digested products were consistent with those predicted for *mcr-1* to *mcr-5* genes. The DNA sequencing of the digested products confirmed the specificity of the amplification (data not shown). Through restriction endonuclease analysis of the amplification products, *mcr-1* to *mcr-5* genes were successfully distinguished (Figure 4A, *mcr-1*, *mcr-3*, and *mcr-4*; Figure 4B, *mcr-2* and *mcr-5*).

## Multi-LAMP detection of clinical samples

To further evaluate the accuracy of multi-LAMP, 58 clinical bacterial samples from a previous study<sup>26</sup> were subjected to the present assay. Among the 58 clinical samples, 12 were positive for *mcr-1*, five for *mcr-3*, and one for *mcr-4*, while the remaining 40 samples were *mcr* negative. The clinical bacterial samples were also subjected to traditional PCR

analysis, which also revealed twelve *mcr-1*-positive samples, five *mcr-3*-positive samples, one *mcr-4*-positive sample, and forty negative samples, consistent with the results of multi-LAMP. Therefore, these findings reveal that multi-LAMP described here showed good consistency with conventional PCR analyses.

## Discussion

Colistin is a polypeptide antibiotic, belonging to the family of polymyxins. Colistin was first reported to treat infections by Gram-negative bacteria in the late 1940s. Owing to its risk of nephrotoxicity and neurotoxicity, colistin was not popularized in clinical treatment. Later, antibiotics acting on emerging carbapenem-resistant superbugs were deemed critical because of their high morbidity and

mortality, framing colistin as a significant therapeutic alternative.<sup>2</sup> Emerging colistin resistance, therefore, has confounding implications in patient care. Before 2015, the mechanisms underlying colistin were known only to involve chromosomal mutations; hence, its spread was expected to be limited to vertical transmission, which was usually stable, incapable of spreading to other bacteria and imposing a fitness cost upon the bacteria. The discovery of *mcr* genes signifies plasmid-mediated colistin resistance, implying a new horizontal transmission channel for the propagation of the *mcr* genes, increasing their rapid transmission risk and range. Moreover, colistin abuse via its supplementation in animal feed contributed to its dissemination through horizontal gene transfer.<sup>4</sup> Therefore, analysis of *mcr* genes is necessary to identify colistin resistance and control its horizontal transmission.

This study established a novel multi-LAMP system to detect multiple *mcr* genes, with the establishment of a triple-LAMP for *mcr-1*, *mcr-3*, and *mcr-4*, as well as a double-LAMP for *mcr-2* and *mcr-5*. We designed 15 primer pairs for the conserved sequences of *mcr-1* to *mcr-5* genes (3 for each gene). Because *mcr* genes share significant homology, we screened the best primer sets by considering *mcr* genes as positive controls. Five primer sets each for *mcr-1* to *mcr-5* genes were screened out and determined to be the optimal primers for the LAMP assay. Subsequent specificity analyses confirmed the optimal nature of these primer sets. We compared the sensitivity of LAMP with that of traditional PCR analysis, reporting that the detection limit of the LAMP assay was 10-fold that of conventional PCR analysis. This high sensitivity and specificity rendered LAMP suitable for early screening in clinical settings, especially in the primary medical institutions. Through restriction digestion of the LAMP products based on band numbers and fragment lengths, we successfully distinguished *mcr-1*, *mcr-3*, and *mcr-4*, as well as *mcr-2* and *mcr-5*, thereby enabling multiplex detections of *mcr* genes. Additionally, we applied this multi-LAMP method to clinical samples to assess the reliability of our methods, with results being consistent with those of conventional PCR analyses.

Compared with traditional PCR, the present method exhibited the following advantages: 1) high specificity and sensitivity and ease of operation; 2) multiplex detections of *mcr* genes using the same detection system, thus reducing manual operation; 3) a total operating time of <60 mins, as opposed to 90 mins to detect *mcr* genes via conventional PCR analysis; 4) greater user-friendliness than conventional

PCR analysis, with no requirement of specialized instruments and complicated operations. These advantages render the multi-LAMP assay promising for clinical application, especially in resource limited medical institutions.

This study has some limitations; the sensitivity and specificity of the multi-LAMP assay are relatively poorer when applied to samples containing more than one *mcr* genes. Nonetheless, according to other previous studies and data from our on-going experiments, it is rare for a single strain to contain multiple *mcr* genes in clinical samples (0.01% is according to our data; unpublished data). Therefore, our approach is applicable in most practical situations. Moreover, gene sets (*mcr-1*, *mcr-3*, and *mcr-4*) and gene sets (*mcr-2* and *mcr-5*) were successfully detected, where *mcr-1*, *mcr-3*, and *mcr-4* are the most prevalent *mcr* genes in People's Republic of China and *mcr-2* and *mcr-5*, not yet detected in humans, complemented the whole *mcr* gene family. With newer *mcr* genes being reported (*mcr-6* to *mcr-9* genes during our study in 2018) in future studies, continuous efforts are needed to track newly reported *mcr* genes and to establish a multi-LAMP system encompassing all *mcr* genes.

In our future studies, we intend to investigate the LAMP-based methods for drug resistance genes of these *mcr* genes and to continuously track the newly reported *mcr* genes. Upon analyzing more *mcr* genes and using larger sample sizes, we intend to further assess the potential of multi-LAMP and further validate its diagnostic power. These results provide critical insights into the efficacy of this method for future clinical applications related to antibiotic resistance. Our results potentially contribute to the prevention of antibiotic resistance in health care settings by providing a system of early detection of antibiotic resistance and prescribing patterns at national, regional, and local levels.

## Conclusion

In conclusion, we established a restriction digestion-based multi-LAMP method, which successfully detected *mcr-1*, *mcr-3*, and *mcr-4* via a triple-LAMP and *mcr-2* and *mcr-5* via a double-LAMP. We anticipate that this method could rapidly help screen *mcr* genes and other drug-resistant genes in a variety of clinical settings. To our knowledge, this is the first study reporting the application of LAMP in the detection of *mcr-2* to *mcr-5* genes and the first time that multi-LAMP has been applied to detect *mcr* genes.

## Acknowledgments

This work was supported by grants from the National Natural Science Foundation of China (grant numbers 81830103 and 81722030), and the Guangdong Natural Science Foundation (grant number 2017A030306012).

## Disclosure

The authors report no conflicts of interest in this work.

## References

- Centers for Disease Control and Prevention. Antibiotic resistance threats in the United States; 2013. Available from: <https://www.cdc.gov/drugresistance/pdf/ar-threats>.
- Lim LM, Ly N, Anderson D, et al. Resurgence of colistin: a review of resistance, toxicity, pharmacodynamics, and dosing. *Pharmacotherapy*. 2010;30(12):1279–1291. doi:10.1592/phco.30.1.109
- Hasman H, Hammerum AM, Hansen F, et al. Detection of *mcr-1* encoding plasmid-mediated colistin-resistant *Escherichia coli* isolates from human bloodstream infection and imported chicken meat, Denmark 2015. *Euro Surveill*. 2015;20(49). doi:10.2807/1560-7917.ES.2015.20.49.30085
- Liu YY, Wang Y, Walsh TR, et al. Emergence of plasmid-mediated colistin resistance mechanism MCR-1 in animals and human beings in China: a microbiological and molecular biological study. *Lancet Infect Dis*. 2016;16(2):161–168. doi:10.1016/S1473-3099(16)30197-9
- Chen X, Zhao XF, Che J, et al. Detection and dissemination of the colistin resistance gene, *mcr-1*, from isolates and faecal samples in China. *J Med Microbiol*. 2017;66(2):119–125. doi:10.1099/jmm.0.000425
- Yao X, Doi YH, Zeng L, Lv LC, Liu JH. Carbapenem-resistant and colistin-resistant *Escherichia coli* co-producing NDM-9 and MCR-1. *Lancet Infect Dis*. 2016;16(3):288–289. doi:10.1016/S1473-3099(16)30197-9
- Schwarz S, Johnson AP. Transferable resistance to colistin: a new but old threat. *J Antimicrob Chemother*. 2016;71(8):2066–2070. doi:10.1093/jac/dkw274
- Carroll LM, Gaballa A, Guldman C, Sullivan G, Henderson LO, Wiedmann M. Identification of Novel Mobilized Colistin Resistance Gene *mcr-9* in a Multidrug-Resistant, Colistin-Susceptible *Salmonella enterica* Serotype Typhimurium Isolate. *mBio*. 2019;10(3):e00853–19. doi:10.1128/mBio.00853-19
- Xavier BB, Lammens C, Ruhel R, et al. Identification of a novel plasmid-mediated colistin-resistance gene, *mcr-2*, in *Escherichia coli*, Belgium, June 2016. *Euro Surveill*. 2016;21(27):8–13. doi:10.2807/1560-7917.ES.2016.21.27.30280
- Yin W, Li H, Shen Y, et al. Novel plasmid-mediated colistin resistance gene *mcr-3* in *Escherichia coli*. *MBio*. 2017;8(3):e00543–17
- Carattoli A, Villa L, Feudi C, et al. Novel plasmid-mediated colistin resistance *mcr-4* gene in *Salmonella* and *Escherichia coli*, Italy 2013, Spain and Belgium, 2015 to 2016. *Euro Surveill*. 2017;22(31). doi:10.2807/1560-7917.ES.2017.22.31.30589
- Borowiak M, Fischer J, Hammerl JA, Hendriksen RS, Szabo I, Malorny B. Identification of a novel transposon-associated phosphoethanolamine transferase gene, *mcr-5*, conferring colistin resistance in d-tartrate fermenting *Salmonella enterica* subsp. *enterica* serovar Paratyphi B. *J Antimicrob Chemother*. 2017;72(12):3317–3324. doi:10.1093/jac/dkx066
- AbuOun M, Stubberfield EJ, Duggett NA, et al. *mcr-1* and *mcr-2* (*mcr-6.1*) variant genes identified in *Moraxella* species isolated from pigs in Great Britain from 2014 to 2015. *J Antimicrob Chemother*. 2018;73(10):2904. doi:10.1093/jac/dky272
- Yang YQ, Li YX, Lei CW, Zhang AY, Wang HN. Novel plasmid-mediated colistin resistance gene *mcr-7.1* in *Klebsiella pneumoniae*. *J Antimicrob Chemother*. 2018;73:1791–1795. doi:10.1093/jac/dky111
- Wang X, Wang Y, Zhou Y, et al. Emergence of a novel mobile colistin resistance gene, *mcr-8*, in NDM-producing *Klebsiella pneumoniae*. *Emerg Microbes Infect*. 2018;7(1):122. doi:10.1038/s41426-018-0124-z
- Rebello AR, Bortolaia V, Kjeldgaard JS, et al. Multiplex PCR for detection of plasmid-mediated colistin resistance determinants, *mcr-1*, *mcr-2*, *mcr-3*, *mcr-4* and *mcr-5* for surveillance purposes. *Euro Surveill*. 2018;23(6):29–39. doi:10.2807/1560-7917.ES.2018.23.6.17-00672
- Notomi T, Okayama H, Masubuchi H, et al. Loop-mediated isothermal amplification of DNA. *Nucleic Acids Res*. 2000;28(12):E63. doi:10.1093/nar/28.12.e63
- Yuan H, Chao Y, Li S, et al. Pico-injection-enabled multitarget loop-mediated isothermal amplification for detection of foodborne pathogens. *Anal Chem*. 2018;90(22):13173–13177. doi:10.1021/acs.analchem.8b03233
- Qian WJ, Meng YQ, Lu Y, et al. Rapid, sensitive, and carryover contamination-free loop-mediated isothermal amplification-coupled visual detection method for 'Candidatus *Liberibacter asiaticus*'. *J Agr Food Chem*. 2017;65(38):8302–8310. doi:10.1021/acs.jafc.7b03490
- Tian B, Ma J, de la Torre TZG, et al. Rapid newcastle disease virus detection based on Loop-mediated isothermal amplification and opto-magnetic readout. *Acs Sensors*. 2016;1(10):1228–1234. doi:10.1021/acssensors.6b00379
- Lodh N, Mikita K, Bosompem KM, et al. Point of care diagnosis of multiple schistosome parasites: species-specific DNA detection in urine by loop-mediated isothermal amplification (LAMP). *Acta Trop*. 2017;173:125–129. doi:10.1016/j.actatropica.2017.06.015
- Abbasi I, King CH, Muchiri EM, Hamburger J. Detection of *Schistosoma mansoni* and *Schistosoma haematobium* DNA by loop-mediated isothermal amplification: identification of infected snails from early prepatency. *Am J Trop Med Hyg*. 2010;83(2):427–432. doi:10.4269/ajtmh.2010.09-0764
- Abbasi I, Kirstein OD, Hailu A, Warburg A. Optimization of loop-mediated isothermal amplification (LAMP) assays for the detection of *Leishmania* DNA in human blood samples. *Acta Trop*. 2016;162:20–26. doi:10.1016/j.actatropica.2016.06.009
- Zou D, Huang S, Lei H, et al. Sensitive and rapid detection of the plasmid-encoded colistin-resistance gene *mcr-1* in Enterobacteriaceae isolates by loop-mediated isothermal amplification. *Front Microbiol*. 2017;8:2356. doi:10.3389/fmicb.2017.02356
- Imirzalioglu C, Falgenhauer L, Schmiedel J, et al. Evaluation of a loop-mediated isothermal amplification-based assay for the rapid detection of plasmid-encoded colistin resistance gene *mcr-1* in Enterobacteriaceae isolates. *Antimicrob Agents Chemother*. 2017;61(4). doi:10.1128/AAC.02326-16
- Zhong LL, Phan HTT, Shen C, et al. High rates of human fecal carriage of *mcr-1*-positive multidrug-resistant Enterobacteriaceae emerge in China in association with successful plasmid families. *Clin Infect Dis*. 2018;66(5):676–685. doi:10.1093/cid/cix768
- Holton TA, Graham MW. A simple and efficient method for direct cloning of PCR products using ddT-tailed vectors. *Nucleic Acids Res*. 1991;19(5):1156. doi:10.1093/nar/19.5.1156
- Kovalic D, Kwak JH, Weisblum B. General method for direct cloning of DNA fragments generated by the polymerase chain reaction. *Nucleic Acids Res*. 1991;19(16):4560. doi:10.1093/nar/19.16.4560
- Tomita N, Mori Y, Kanda H, Notomi T. Loop-mediated isothermal amplification (LAMP) of gene sequences and simple visual detection of products. *Nat Protoc*. 2008;3(5):877–882. doi:10.1038/nprot.2008.57



## Supplementary material

**Table S1** The primer sequences of LAMP for *mcr-1* to *mcr-5* genes

Target gene	Primers	Sequences (5'-3')	Reference
<i>mcr-1</i> (1)	F3 B3 FIP BIP LF LB	TGATGCAGCATACTTCTGTG GACCGTGCCATAAGTGTC GCGATGGGATAGGTTTGGCTGTGTTGCCGTTTTCTTGAC TGCTGACGATCGCTGTGCGCACATAGCGATACGATGAT AAGGTAAGATTGGCGGTCTG CTACTGATCACCACGCTGTT	This study
<i>mcr-1</i> (2)	F3 B3 FIP BIP LF LB	TGCTACCAAGTTTGCTTGT CGTCTTTGGCGTGATAAATG AGACTTGCCACGATCAAGCCTTAAGGTGGATTATCCGACTTG GCGTTACGAGTCATTATGCCGTAGATTGGCATGATCGGAT CAATCGGCGCATCAAACC CGCTGCGTAGCTATGTCA	This study
<i>mcr-1</i> (3)	F3 B3 FIP BIP LF LB	ATACCGCCAAATACCAAGAAA CATCTAAGCCAACGAGCAT GCAGCTTATCCATCACGCCTTGATACGCTGGATCGCTTG GCCGATTATAAATCCGCGACCAGCGGCATTGTTATAAGGA GTCCGAATTATTATCACGCCAC CAACGCCATCTGCAACAC	This study
<i>mcr-2</i> (1)	F3 B3 FIP BIP LF LB	ACGCCTAGTGGTGTTCTGT GCGGTCAAGCGTATCTAGC AACTTTGGCAAGCTGCGGGAATGCTGACCATGTGCAGTTC TCGACGGCGTATTCTGTGCCGTATTTGGCGGTATCGACA AGTCTCACGGCCATAGCC GTGTATGTTTCAGCTATTTGGGTCA	This study
<i>mcr-2</i> (2)	F3 B3 FIP BIP LF LB	GGGTAAGCTTGCCAGTATCG AGCTGCGGGAAAGTCTCA CTCGGCTTGGTGGTCTGCACCACTGCGCCAACAGACAC GAGCGTAAGCCACGCCTAGTGCGGCCATAGCCATTGAAGT GGCGTCTTTGGCATGATAGATG GTGTTGTCGTCGCGGTGAGA	This study
<i>mcr-2</i> (3)	F3 B3 FIP BIP LF LB	CAAAGACGCCGTGCAGAC CAGAATACGCCGTGATGT ACTGCACATGGTCAGCACGCGAGCGTAAGCCACGCCTA GGCTATGGCCGTGAGACTTTCCGCCACACGATGTCACCTGG ACCGACGACGAACACCAC CTTGCCAAAGTTGATGGCTTG	This study

(Continued)

**Table S1** (Continued).

Target gene	Primers	Sequences (5'-3')	Reference
<i>mcr-3</i> (1)	F3 B3 FIP BIP LF LB	CATTACCAATATTGCTTGTTGC TTGGCTGGAACAATCTCAC GCTAACGCCTCATTGTTGATTGGTGCACCTTCTTATCGCACTTA TCAAAGGGATTCTAACTCGTGCGCAATAACCGCAATCACTAT TCATTGTGTAACCTAACGATTGC CCTATCGATGTTTGCATCACTT	This study
<i>mcr-3</i> (2)	F3 B3 FIP BIP LF LB	CATTACCAATATTGCTTGTTGC TTGGCTGGAACAATCTCAC GCTAACGCCTCATTGTTGATTGGTGCACCTTCTTATCGCACTTAG TCAAAGGGATTCTAACTCGTGCGCAATAACCGCAATCACTAT TCATTGTGTAACCTAACGATTGC CCTATCGATGTTTGCATCACTT	This study
<i>mcr-3</i> (3)	F3 B3 FIP BIP LF LB	CATTACCAATATTGCTTGTTGC TTGGCTGGAACAATCTCAC GCTAACGCCTCATTGTTGATTGGGCACTTCTTATCGCACTTAGT TCAAAGGGATTCTAACTCGTGCGCAATAACCGCAATCACTAT TCATTGTGTAACCTAACGATTGC CCTATCGATGTTTGCATCACTT	This study
<i>mcr-4</i> (1)	F3 B3 FIP BIP LF LB	TGAGTTAAGGCGTTACATTGT CGCATGAGCTAGTATCGTTAA TTACGACTGGCATTCTTCGCACTATTGCGAGCGCCCAT AGTGGTTGTTGTGGGTGAAACTAGCATTGGTTGGCTTGTTA TCTAGGCCAAGTTGTTGGTATT CGCGCTCAATGAGCTATCA	This study
<i>mcr-4</i> (2)	F3 B3 FIP BIP LF LB	TGTTGAAACAACAGTGAGT CGCATGAGCTAGTATCGTTAA TTACGACTGGCATTCTTCGCACTAGGCACTATTGCGAGCG AGTGGTTGTTGTGGGTGAAACTAGCATTGGTTGGCTTGTTA GCCAAGTTGTTGGTATTCCATG CGCGCTCAATGAGCTATCA	This study
<i>mcr-4</i> (3)	F3 B3 FIP BIP LF LB	CATGGAATACCAACAACCTGG CGGCGAGGATCATAGTCT AGTTTCACCCACAACAACCACTAGATGCGAAGAATGCCAG CAAGCCAACCAATGCTCATACCTGCCGCATGAGCTAGTAT TAGGTTTAGTGTTCTGGGTACG GGGCTGATTGCGTTTAACG	This study
<i>mcr-5</i> (1)	F3 B3 FIP BIP LF LB	CAATGGAGAATGCTGCCCTA GCGTGGGTATCAGCACATC AGCCCGTTCGTAAACCCCTGACCTTGTGGTTGCAGCCGT AGCGGTAATGATGCGCAGCGCATGACTGGCCACAGACC CTCGCAATCCACCACACGGAT TGCGCTCTCGCCATGA	This study

(Continued)

**Table S1** (Continued).

Target gene	Primers	Sequences (5'-3')	Reference
<i>mcr-5</i> (2)	F3 B3 FIP BIP LF LB	ATGGATGTGCTGATACCCAC AGTACGAGAGCACGAGGAC CGAATGCCCGAGATGACGTAGTCTTCGTGAAAACAAGCCGC GACTGAACAGGCGTCATCGTCACCTTGTTCTTGAGGCCCTC GCAGGAGTGATCAATAGCGAA GCAGACGAAGCAAGGGAAG	This study
<i>mcr-5</i> (3)	F3 B3 FIP BIP LF LB	GCTGCCCTACTTGTTGGTTG CGAAGCGGCTTGTTTCAC TACCGCTTGTTCCAGCCCGCAGCCGTATCCGTGTGGT CTGGCGCTCTCGCCATGATTGAAGCGTGGGTATCAGCAC ACCCTGACTCTCGCAATCC TCCATGGGTCTGTGGCC	This study

## Infection and Drug Resistance

Dovepress

### Publish your work in this journal

Infection and Drug Resistance is an international, peer-reviewed open-access journal that focuses on the optimal treatment of infection (bacterial, fungal and viral) and the development and institution of preventive strategies to minimize the development and spread of resistance. The journal is specifically concerned with the epidemiology of

antibiotic resistance and the mechanisms of resistance development and diffusion in both hospitals and the community. The manuscript management system is completely online and includes a very quick and fair peer-review system, which is all easy to use. Visit <http://www.dovepress.com/testimonials.php> to read real quotes from published authors.

Submit your manuscript here: <https://www.dovepress.com/infection-and-drug-resistance-journal>