

G-CSF associates with neurogenesis and predicts prognosis and sensitivity to chemotherapy in pancreatic ductal adenocarcinoma

Lingfu Zhang¹
 Lianyuan Tao¹
 Limei Guo²
 Jun Zhan³
 Chunhui Yuan¹
 Zhaolai Ma¹
 Bin Jiang¹
 Dianrong Xiu¹

¹Department of General Surgery, Peking University Third Hospital, Beijing, People's Republic of China; ²Department of Pathology, Peking University Third Hospital, Beijing, People's Republic of China; ³Laboratory of Molecular Cell Biology and Tumor Biology, Department of Anatomy, Histology and Embryology, Peking University Health Science Center, Beijing, People's Republic of China

Background: Recent studies demonstrated that granulocyte colony-stimulating factor (G-CSF), regularly used for the prevention of neutropenia, is engaged in cancer progression. However, the role of G-CSF in pancreatic ductal adenocarcinoma (PDAC) is not clear. The aim of the present study was to investigate the expression and prognostic value of G-CSF in patients with PDAC.

Materials and methods: The localization and expression of G-CSF in PDAC were examined by immunohistochemistry (IHC). The analysis of the levels of G-CSF in plasma was evaluated using ELISA kit. The correlation between G-CSF expression and patients' survival was assessed by Kaplan–Meier analysis.

Results: In IHC specimens, G-CSF was discovered predominantly in the cell cytoplasm and expressed in most of PDAC, while in plasma, the systemic level of G-CSF is no different between normal patients and pancreatic cancer patients. In 100 PDAC cases with IHC, patients with grades 2 and 3 were defined as the high expression group (41 patients, 41%), and those with grades 0 and 1 as the low expression group (59 patients, 59%). Significant correlation was noted between high G-CSF expression and neural invasion ($P = 0.042$) or early recurrence ($P < 0.001$). G-CSF appeared to be an independent adverse prognostic factor (hazard ratio = 1.774, 95% confidence interval 1.150–2.737, $P = 0.010$) in addition to N stage ($P = 0.002$). Specifically, adjuvant chemotherapy consisting of gemcitabine prolongs survival of patients with high G-CSF expression (median survival time 14 months vs 7.5 months). Morphologically, high G-CSF expression cells demonstrate the association with neurogenesis.

Conclusion: High expression of G-CSF is a prognostic marker and an indicator to chemotherapy response in PDAC.

Keywords: pancreatic ductal adenocarcinoma, granulocyte colony-stimulating factor, adjuvant chemotherapy, neural invasion, neurogenesis, prognosis

Introduction

Pancreatic ductal adenocarcinoma (PDAC) is one of the most aggressive malignancies, and is a leading cause of cancer-related mortality.^{1,2} Most of PDAC patients are diagnosed at an advanced stage and its 5-year survival rate is only 6%.¹ With the development of chemotherapy, the prognosis of PDAC has improved, but it also increases the rates of peripheral neuropathy and myelosuppression.³ So, the simultaneous administration of granulocyte colony-stimulating factor (G-CSF) was adopted for the prevention of severe neutropenia and febrile neutropenia (FN) in PDAC patients treated with chemotherapy in some institution.⁴

G-CSF is known to mobilize hematopoietic progenitor stem cells from the bone marrow and stimulate the survival, proliferation, differentiation and function of neutro-

Correspondence: Dianrong Xiu
 Department of General Surgery, Peking University Third Hospital, 49 North Garden Road, Haidian District, Beijing 100191, People's Republic of China
 Tel +86 10 8226 7320
 Fax +86 10 6201 0334
 Email xiudianrong@hotmail.com

phil precursors and mature neutrophils, but its role as a neurotrophic factor is much less understood. However, recently the role of G-CSF in cancer progression via the promotion of nerve outgrowth has been reported in prostate cancer,⁵ and the relationship between high expression of G-CSF and poor prognosis has been demonstrated in cervical cancer and breast cancer.^{6,7} What is more, the prognosis of patients with G-CSF-producing pancreatic cancer is poor,^{8,9} and the response to different chemotherapy regimens are varied in these patients with G-CSF-producing pancreatic cancer.^{8,10}

So, elucidating the role of G-CSF in pancreatic cancer progression and the association between high expression of G-CSF and prognosis in human PDAC are important in deciding whether it is rational to adopt simultaneous administration of G-CSF for the prevention of severe neutropenia and FN in PDAC patients and which type of chemotherapy for patients with G-CSF-producing pancreatic cancer is reasonable.

Our previous study showed that parasympathetic neurogenesis is an independent adverse factor in PDAC prognosis.¹¹ The study of Dobrenis et al⁵ demonstrates that G-CSF has an effect on nerve outgrowth and promotes prostate cancer development. These results promote us to consider the role of G-CSF in pancreatic cancer, and so the aim of this study was to explore the relationships between G-CSF and clinicopathological factors of PDAC and the potentiation of G-CSF on parasympathetic neurogenesis and pancreatic cancer development.

Materials and methods

Patients and tissue/plasma samples

The study was approved by the Clinical Ethics Committee of Peking University Third Hospital (approval number 2015092). The Clinical Ethics Committee deemed that patient consent for use of the tissue samples was not required, as the paraffin-embedded tissues from the pathology department were analyzed anonymously. The data of 189 consecutive patients with suspected PDAC were retrospectively reviewed. They were treated with intended radical resection for resectable lesions between 2008 and 2014. After excluding patients who did not have a diagnosis of PDAC, 100 patients (52.9%) with the pathology of PDAC and available pathologic specimens from patients with benign periampullary lesions were enrolled in this study. In addition, 5 specimens of normal pancreatic tissues were used for the assessment and control of G-CSF expression. The plasmas of PDAC patients (104 cases) and control healthy individuals (10 cases) were prospectively collected from 2015 to 2016.

The clinicopathological parameters and the outcomes of these patients were recorded. They were followed up until death or April 15, 2016, with a median follow-up of 15 months (range: 2–62 months). Clinical and pathological factors were evaluated, including demographic information, TNM stage, G grade, and presence of vessel invasion and neural invasion. The clinical stages of all patients were classified according to the American Joint Committee on Cancer (AJCC) 7th Edition.¹²

Adjuvant chemotherapy

Patients with confirmed pathology of PDAC received adjuvant chemotherapy depending on their preference. The procedure of adjuvant chemotherapy was conducted according to the NCCN guideline. Gemcitabine was the first choice in our centers.

Immunohistochemistry

All tumor specimens employed for this study were reviewed by at least two pathologists for final diagnosis. Archived formalin-fixed paraffin-embedded PDAC specimen sections were dealt with as described previously.¹¹ After deparaffinization in xylene, the sections were rehydrated in graded alcohols. Endogenous peroxidase was quenched with 3% hydrogen peroxide in methanol at room temperature (25°C). The sections were placed in a 95°C solution of 0.01 M sodium citrate buffer (pH 6.0) for antigen retrieval. A rabbit anti-G-CSF polyclonal antibody (1:1000, ab9691; Abcam) was used for the detection of G-CSF. The primary antibody was applied overnight at 4°C. PV9000 two-step plus a poly-horseradish peroxidase anti-mouse/rabbit immunoglobulin G detection system (Zhongshan Jinqiao, Jiaxing, People's Republic of China) was then applied. Detection was performed with the Dako Envision System (Dako, Glostrup, Denmark), followed by chromogen detection with diaminobenzidine (DAB). Hematoxylin was used for counterstaining. Negative controls were performed by omitting the use of the primary antibody.

Semi-quantitative scoring

Semi-quantitative scoring of antibody staining on the slides was examined and confirmed by two pathologists, and scores were graded without prior knowledge of clinical information. These scores were highly consistent with a correlation coefficient of 0.92. Staining intensity and percentage of tumor cells stained were utilized in evaluating G-CSF staining on the tumor specimen section. Cytoplasmic G-CSF staining on tumor tissue slides was assessed using the following criteria:

grade 0 = absent (Figure 1A), grade 1 = weak (Figure 1B), grade 2 = moderate (Figure 1C) and grade 3 = high (Figure 1D). “Scores 0 and 1” were defined as low expression and “scores 2 and 3” as high expression. Reevaluations were conducted simultaneously in cases with discrepancies by the two pathologists until a consensus was reached. The value of kappa was 0.775. If there was a discrepancy between staining intensity and percentage of tumor cells, the higher grade was chosen to represent the grade.

Analysis of systemic level of G-CSF

The plasmas of PDAC patients and healthy control individuals were collected and stored at -80°C for later analysis of the levels of G-CSF using ELISA kit (MultiSciences Biotech, Hangzhou, People’s Republic of China) according to the manufacturer’s instructions.

Follow-up

Patients were followed up in the outpatient clinic with physical examinations and abdominal–pelvic CT every 3–6 months for the first 3 years. Overall survival was defined as the interval between the first radical operation and the date of death (all-cause mortality). Disease-free survival was defined as the interval between the first radical operation and the date of the first evidence of recurrence (local, regional or metastatic). Follow-up time was defined as the time from the first radical operation to the date of the last follow-up.

Follow-up information was obtained from outpatient clinic records, hospital records and telephone interviews. Follow-up and survival times were recorded in months.

Statistical analysis

Study data were collected on standard forms. The continuous variables not meeting the normal distribution were expressed as median (p25, p75), and the Mann-Whitney *U* test was used to analyze the differences between groups. The categorical variables were described by frequencies and proportions and tested by the chi-square test or Fisher’s exact test. Differences of G-CSF expression among various subgroups were identified through the Kruskal–Wallis rank sum test. Student’s *t*-test was used for paired studies. The Kaplan–Meier method was performed to represent survival curves, and the log-rank test was applied to verify significant differences in survival time. Association of overall survival with G-CSF expression was examined by Cox regression model using backward stepwise (likelihood ratio) method, and adjusted by T stage, N stage, AJCC stage, R status and neural invasion. Results were considered statistically significant when $P < 0.05$ (two-sided) using SPSS version 21.0 (SPSS Inc., Chicago, IL, USA).

Results

Patient demographics

The characteristics of clinical data of PDAC patients enrolled for immunohistochemistry (IHC) evaluation are

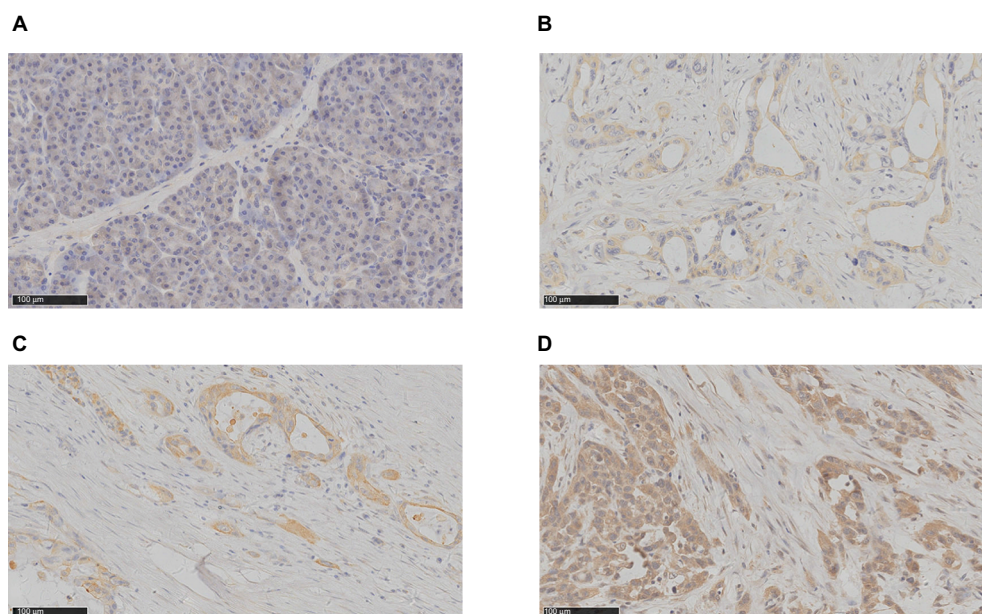


Figure 1 G-CSF is not expressed in normal pancreatic tissue, but expressed in PDAC.

Notes: Immunohistochemical staining was performed to examine the expression of G-CSF in normal pancreatic and PDAC tissues. The representative photographs are shown. (A) No expression of G-CSF; (B) weak expression of G-CSF; (C) moderate expression of G-CSF; (D) high expression of G-CSF.

Abbreviations: G-CSF, granulocyte colony-stimulating factor; PDAC, pancreatic ductal adenocarcinoma.

summarized in Table 1. The study cohort of 100 PDAC patients with intended radical resection had a median age of 63.5 years (range: 23–86 years). Among them, 61 were male and 39 were female. The majority of tumors were located at the head or neck of the pancreas (73%). Eighty-seven (87%) of the tumors were pT3, 50 patients (50%) had lymph node metastases and 19 patients (19%) had distant metastasis including 14 with paraaortic lymph node metastasis, 3 local peritoneal metastasis and 2 local liver metastasis. In total, 41 (41%) patients were treated with adjuvant chemotherapy. Among the cohort, 54 patients showed recurrence within 6 months, of whom 13 cases had liver metastasis, 11 had multiple organ metastasis, 8 had lymph node metastasis, 6 had peritoneal metastasis, 3 had local recurrence, 2 had pulmonary metastasis and 1 had distant muscle metastasis. All of these patients formed the early recurrence group. The observation period was from February 2009 to December 2016, with a median follow-up time of 15 months (range: 2–74 months).

Table 1 Characteristics of clinical data of PDAC patients

Characteristics	Value	%
Age: median (range), years	63.5 (23, 86)	
Sex		
Female	39	39
Male	61	61
Location of the tumor		
Head and neck	73	73
Body and tail	27	27
TNM category		
T1	2	2
T2	11	11
T3	87	87
N0	50	50
N1	50	50
M0	81	81
M1	19	19
AJCC stage		
IA	3	3
IB	5	5
IIA	42	42
IIB	31	31
IV	19	19
R status		
Negative	77	77
Positive	23	23
Survival status		
Alive	15	15
Dead	85	85

Notes: AJCC is a classification system developed by the American Joint Committee on Cancer for describing the extent of disease progression in cancer patients.

Abbreviations: AJCC, American Joint Committee on Cancer; PDAC, pancreatic ductal adenocarcinoma; TNM, tumor-node-metastasis.

G-CSF is not expressed in normal pancreatic tissue and increased in PDAC

To detect the G-CSF expression in pancreas, we examined the tissues of 100 patients with PDAC and 5 patients with normal pancreas resected. We examined G-CSF staining in normal pancreatic tissues and found that G-CSF expression was frequently absent in these tissues (Figure 1A). But G-CSF staining was observed in most PDAC tissues (90%) and stained predominantly in the cytoplasm of PDAC cells. The results showed that low G-CSF (0–1) expression and high G-CSF (2–3) expression were accounted for 41% (41) and 59% (59), respectively. Taken together, these findings demonstrated that G-CSF expression increased in PDAC tissues.

G-CSF expression was associated with clinicopathological variables and prognosis in PDAC

The relationships between G-CSF expression and clinicopathological variables are summarized in Table 2. The most obvious correlation was identified between G-CSF expression and early recurrence ($P = 0.019$). Similarly, neural invasion correlated with higher G-CSF expression ($P = 0.042$). However, G-CSF expression was not found to be related significantly with patients' age ($P = 0.285$), sex ($P = 0.414$), location of the tumor ($P = 0.493$), T stage ($P = 0.255$), N stage ($P = 0.685$), AJCC stage ($P = 0.317$), G grade ($P = 0.333$), R status ($P = 0.477$) and vessel invasion ($P = 0.484$).

Further investigation was conducted to determine if G-CSF expression was correlated with patient survival. Patients with low or high G-CSF expression had median survival times of 18.0 and 8.0 months, respectively. Through Kaplan–Meier analysis, we found that the survival of patients with high G-CSF expressions was shorter than those with low G-CSF expressions ($P = 0.006$) (Table 3). In addition, lymph node metastasis ($P = 0.001$), AJCC stage ($P = 0.013$) and R status ($P = 0.001$) also predicted shorter overall survival for PDAC patients (Table 3). Patients with high G-CSF expression had 1.774 times elevated risk of death after adjusting for the remaining features in comparison with patients with low G-CSF expression by Cox regression model (Table 4). By contrast, no prognostic significance was found for overall survival with sex ($P = 0.310$), location of the tumor ($P = 0.226$), T stage ($P = 0.076$), vessel invasion ($P = 0.262$), neural invasion ($P = 0.057$), G grade ($P = 0.173$) and chemotherapy ($P = 0.260$) of the patients (Table 3 and Figure 2). Taken together, these results demonstrate that G-CSF is a factor of prognosis for PDAC patients.

Table 2 Correlation of G-CSF expression with clinicopathological features in PDAC

Characteristics	Low G-CSF expression group	High G-CSF expression group	P-value*
Age (years)	63.4 ± 10.3	63.3 ± 11.5	0.285
Sex			0.414
Female	21	18	
Male	38	23	
Location of the tumor			0.493
Head and neck	45	28	
Body and tail	14	13	
T stage			0.255
I	0	2	
2	7	4	
3	52	35	
N stage			0.685
0	31	19	
I	28	22	
AJCC stage			0.317
IA	1	2	
IB	2	3	
IIA	28	14	
IIB	15	16	
IV	13	6	
G grade			0.333
I	4	0	
2	26	20	
3	24	19	
4	5	2	
R status			0.477
Positive	12	11	
Negative	47	30	
Vessel invasion			0.484
Positive	13	12	
Negative	46	29	
Neural invasion			0.042*
Positive	43	37	
Negative	16	4	
Early recurrence	23/59	31/41	0.000*

Notes: P-values for age were calculated by the Mann-Whitney *U* test and other P-values were calculated by the chi-square test or Fisher's exact test. *Significant P-value, $P < 0.05$. AJCC is a classification system developed by the American Joint Committee on Cancer for describing the extent of disease progression in cancer patients.

Abbreviations: G-CSF, granulocyte colony-stimulating factor; PDAC, pancreatic ductal adenocarcinoma; AJCC, American Joint Committee on Cancer.

Table 4 Summary of important risk factors for overall survival in multivariate Cox regression analysis

	n	β	S.E.	P-value*	HR	95% CI
N stage						
0	50				1.000	
I	50	0.704	0.224	0.002	2.023	1.303–3.140
G-CSF expression						
Low	59				1.000	
High	41	0.573	0.221	0.010	1.774	1.150–2.737

Note: *All the P-values were calculated by multivariate COX regression model.

Abbreviation: G-CSF, granulocyte colony-stimulating factor.

Table 3 The effect of clinicopathological characteristics on overall survival by univariate Kaplan–Meier survival analysis

Characteristics	Median overall survival (months)	Hazard ratio	P-value*
Sex			0.310
Female	12.0	2.485	
Male	12.0	2.676	
Location of the tumor			0.226
Head and neck	12.0	1.942	
Body and tail	11.0	4.544	
T stage			0.076
I	8.0	–	
2	8.0	1.239	
3	14.0	2.797	
N stage			0.001*
0	18.0	3.259	
I	9.0	0.815	
AJCC stage			0.013*
IA	16.0	1.000	
IB	9.0	0.772	
IIA	20.0	1.893	
IIB	9.0	3.640	
IV	10.0	1.262	
R status			0.001*
Positive	8.0	1.198	
Negative	14.0	2.846	
Vessel invasion			0.262
Positive	8.0	1.665	
Negative	14.0	2.357	
Neural invasion			0.057
Positive	10.0	1.117	
Negative	18.0	4.472	
G stage			0.173
I	20	13.500	
2	14.0	2.259	
3	10.0	1.962	
4	6.0	1.309	
G-CSF expression			0.006*
Low	18.0	1.807	
High	8.0	0.710	

Notes: All the P-values were calculated by the log-rank test. *Significant P-value, $P < 0.05$.

Abbreviations: AJCC, American Joint Committee on Cancer; G-CSF, granulocyte colony-stimulating factor.

High G-CSF expression was an indicator of adjuvant chemotherapy profit after radical resection in patients with PDAC

Among all the 100 patients, adjuvant chemotherapy was conducted in 41 patients, and there was no difference in survival time between patients who received adjuvant chemotherapy and those who did not ($P = 0.260$, Figure 3A). Listed separately, in the 59 patients with low G-CSF expression, there were also no differences in survival time between patients who received adjuvant chemotherapy and those who did not

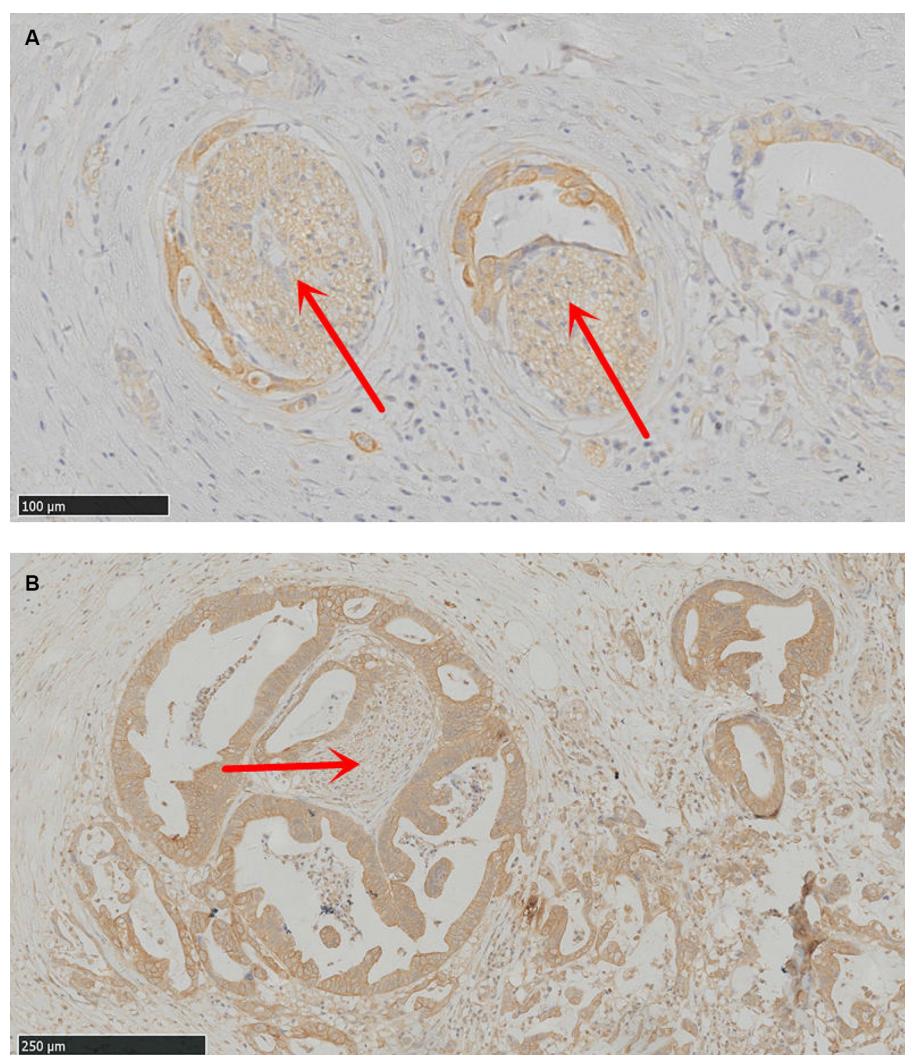


Figure 2 High G-CSF expression cells demonstrate the tendency to surround or invade into the nerve fibers with hypertrophy in PDAC (**A** and **B**).
Abbreviations: G-CSF, granulocyte colony-stimulating factor; PDAC, pancreatic ductal adenocarcinoma.

($P = 0.853$, Figure 3B), while in the 41 patients with high G-CSF expression, 11 patients who received adjuvant chemotherapy demonstrated the tendency to have longer survival time (median survival time 14 months) than those who did not receive adjuvant chemotherapy (median survival time 7.5 months) ($P = 0.056$, Figure 3C).

The systemic level of G-CSF was no different between normal patients and pancreatic cancer patients

The systemic level of G-CSF in pancreatic cancer patients (104 cases) and control healthy individuals (10 cases) was 14.37 ± 13.06 pg/mL and 15.23 ± 10.75 pg/mL, respectively. There was no significant difference in systemic G-CSF levels between patients with PDAC and healthy individuals ($P = 0.934$).

G-CSF expression cells demonstrate the association with neurogenesis in PDAC

Considering the correlation between G-CSF expression and neural invasion ($P = 0.057$) in our study, we further explored the relationship between G-CSF expression and neurogenesis. Interestingly, we observed that G-CSF expression cancer cells demonstrate the tendency to surround or invade into the nerve fibers with hypertrophy (Figure 2).

Discussion

The results of this study indicate clinical relevance of G-CSF expression in PDAC patients, not only from predicting of prognosis but also from a therapeutic point of view in clinical usage of chemotherapy, for routine usage of chemotherapy is controversial in patients with PDAC.

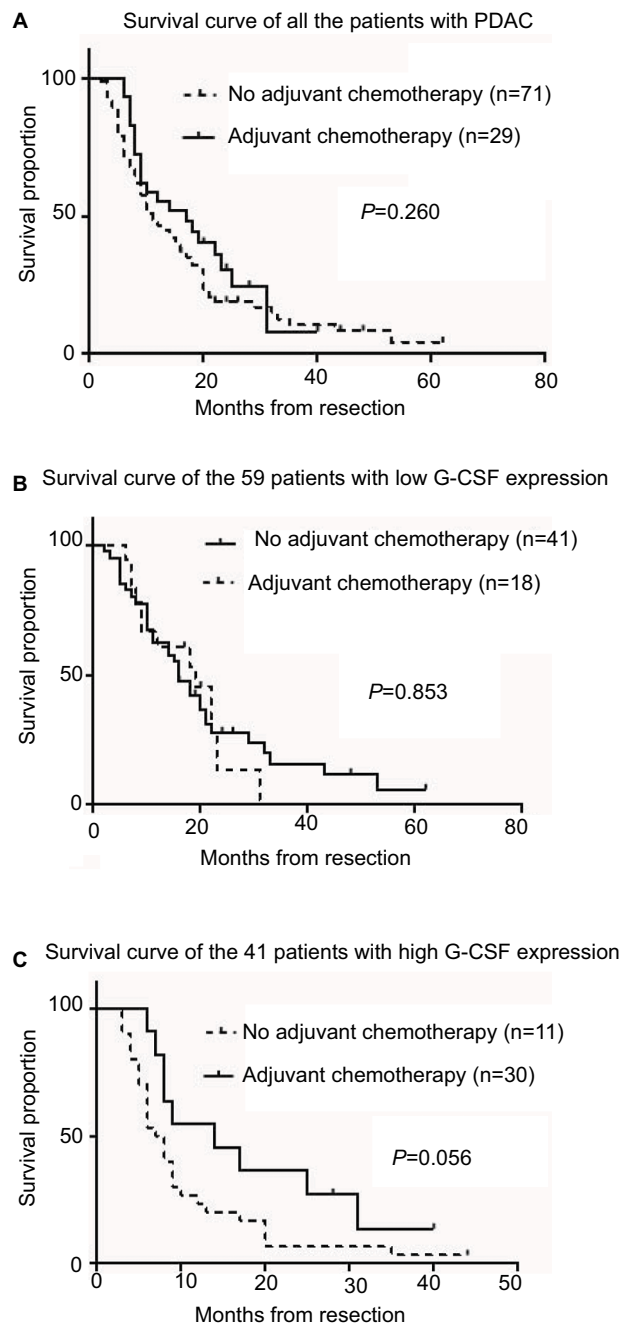


Figure 3 High G-CSF expression PDAC patients demonstrate the profit of adjuvant chemotherapy after resection.

Notes: Three groups of PDAC patients with no G-CSF grouping and with G-CSF listed separately were examined for the profit of adjuvant chemotherapy by Kaplan–Meier analysis. **(A)** No grouping of G-CSF ($P = 0.260$); **(B)** low G-CSF expression group ($P = 0.853$); **(C)** high G-CSF expression group ($P = 0.056$).

Abbreviations: G-CSF, granulocyte colony-stimulating factor; PDAC, pancreatic ductal adenocarcinoma.

First, our results showed that G-CSF expression serves as a biomarker for the prognosis of PDAC. High G-CSF expression indicates an early recurrence and poor prognosis in PDAC patients compared with low expressed patients. In our cohort, early recurrence occurred in 75.6% (31/41) of

patients with high G-CSF expression. These results are in line with previous reports,^{6,7} especially in accordance with studies from patients with PDAC.^{8–10} Unfortunately, the results from PDAC patients are case reports concentrating on patients with high systemic G-CSF levels. Plasma G-CSF detection fails to prove the correlation between patients with PDAC and healthy individuals in systemic G-CSF levels, confirms the preliminary report of Błogowski et al,¹³ who discover the same result of systemic G-CSF levels between PDAC patients and healthy individuals. This study is the first, to our knowledge, to specifically evaluate the association of G-CSF expression and early recurrence/prognosis and adjuvant regimens on outcomes for patients with PDAC. Our study first reported that high G-CSF expression is an indicator for early recurrence and poor prognosis in patients with PDAC.

Second, the simultaneous administration of G-CSF for the prevention of neutropenia in patients treated with chemotherapy should be done with caution. Many guidelines have recommended the use of prophylactic G-CSF for patients with an incidence of FN threshold of 20%; even simultaneous administration of G-CSF was adopted in some institution.⁴ A key point is whether G-CSF administration may bring protumor or prometastatic effects in patients. Indeed, G-CSF overexpression has been correlated with a poor prognosis in a variety of tumors,^{6,8–10,14,15} which is further confirmed in our study. These results emphasize the deleterious effects of G-CSF overexpression by tumors. Fortunately, the result of Kowanetz et al¹⁴ suggest that short-term administration of G-CSF, when given in conjunction with cytotoxic chemotherapy, does not increase the risk of metastasis.¹⁴ However, prolonged exposure to high levels of G-CSF, such as in tumors with constitutively G-CSF released, might result in enhanced metastasis.^{9,14}

Third, chemotherapy is controversial in PDAC patients, especially in the first-line choice of regimen, including fluorouracil and gemcitabine. Among our patients, there was no difference in survival time between patients who received adjuvant chemotherapy and those who did not. But in the patients with high G-CSF expression, adjuvant chemotherapy results in longer survival time. This phenomenon raises the tantalizing possibility that G-CSF expression may be useful in selection of patients benefit for chemotherapy. Prognosis of G-CSF producing pancreatic cancers is extremely poor in patients who do not receive chemotherapy and receive FOLFIRINOX.^{9,15} Interestingly, Kataoka et al reported a case of patient with G-CSF-producing pancreatic cancer who responded to chemotherapy including the regimen of gemcitabine.¹⁰ The regimen of our center for adjuvant chemotherapy of pancreatic cancer

is based on gemcitabine. These results indicate the privilege of gemcitabine in high G-CSF expression PDAC. Considering this is a retrospective study and limited number of the cohort, the results need to be further elucidated by in a cohort of more patients and prospective studies.

These results inferred us to consider that the potential mechanism of G-CSF on PDAC progression may not only depend on systemic effort but also involve local effort. Previous studies demonstrated several types of non-hematopoietic tumors secreting G-CSF that act on myeloid cells and tumor cells.¹⁶ The potential mechanism of G-CSF on tumor progression mainly depends on suppressing dendritic cell differentiation and activation and promoting increases in infiltration of neutrophil-like cells with high immunosuppressive activity.^{17–19} Intriguingly, the study of Dobrenis et al⁵ demonstrates G-CSF has an effect on parasympathetic nerve outgrowth and promotes prostate cancer development. Our previous study showed that parasympathetic neurogenesis is an independent adverse factor in PDAC prognosis.¹¹ These results indicate that G-CSF in PDAC progression may also depend on parasympathetic neurogenesis. In our specimens, the sections with high G-CSF expression demonstrate concomitant nerve fibers with hypertrophy be around or infiltrated by cancer cells. These results show that G-CSF is important in tumor–nerve interactions and suggest that its impact on nerve fibers constitutes potential therapeutic targets in cancer progression.

Conclusion

In conclusion, G-CSF expressions were correlated with poor patient prognosis and indicate the treatment response to gemcitabine in adjuvant chemotherapy. High G-CSF expressions demonstrated the tendency to be around or infiltrated by nerve fibers with hypertrophy. Therefore, G-CSF expression is regarded as a novel predictor of prognosis and could be an effective target in the therapeutic strategy against PDAC.

Acknowledgments

This study was supported by a grant from the National Natural Science Foundation of China (grant no. 81672862) and the Capital Characteristic Clinical Application Research and Achievement Promotion Project (grant no. Z171100001017121).

Disclosure

The authors report no conflicts of interest in this work.

References

- Hidalgo M. Pancreatic cancer. *N Engl J Med*. 2010;362(17):1605–1617.
- Ryan DP, Hong TS, Bardeesy N. Pancreatic adenocarcinoma. *N Engl J Med*. 2014;371(22):2140–2141.
- Von Hoff DD, Ervin T, Arena FP, et al. Increased survival in pancreatic cancer with nab-paclitaxel plus gemcitabine. *N Engl J Med*. 2013;369(18):1691–1703.
- Terazawa T, Goto M, Miyamoto T, et al. Efficacy of prophylactic G-CSF in patients receiving folfinrox: a preliminary retrospective study. *Intern Med*. 2015;54(23):2969–2973.
- Dobrenis K, Gauthier LR, Barroca V, Magnon C. Granulocyte colony-stimulating factor off-target effect on nerve outgrowth promotes prostate cancer development. *Int J Cancer*. 2015;136(4):982–988.
- Hollmén M, Karaman S, Schwager S, et al. G-CSF regulates macrophage phenotype and associates with poor overall survival in human triple-negative breast cancer. *Oncoimmunology*. 2016;5(3):e1115177. eCollection 2016.
- Kumar J, Fraser FW, Riley C, Ahmed N, McCulloch DR, Ward AC. Granulocyte colony-stimulating factor receptor signalling via Janus kinase 2/signal transducer and activator of transcription 3 in ovarian cancer. *Br J Cancer*. 2014;110(1):133–145.
- Kitade H, Yanagida H, Yamada M, et al. Granulocyte-colony stimulating factor producing anaplastic carcinoma of the pancreas treated by distal pancreatectomy and chemotherapy: report of a case. *Surg Case Rep*. 2015;1(1):46.
- Takami K, Miura K, Takeuchi H, et al. Granulocyte-colony stimulating factor-producing pancreatic cancer: report of a case. *Surg Today*. 2008;38(5):453–457.
- Kataoka K, Achiwa K, Minami Y, et al. A case of a patient with granulocyte-colony stimulating factor-producing pancreatic cancer who responded to nab-paclitaxel plus gemcitabine. *Nihon Shokakibyo Gakkai Zasshi*. 2017;114(7):1277–1284. Japanese [with English abstract].
- Zhang L, Guo L, Tao M, Fu W, Xiu D. Parasympathetic neurogenesis is strongly associated with tumor budding and correlates with an adverse prognosis in pancreatic ductal adenocarcinoma. *Chin J Cancer Res*. 2016;28(2):180–186.
- Edge SB, Compton CC. The American Joint Committee on Cancer: the 7th edition of the AJCC cancer staging manual and the future of TNM. *Ann Surg Oncol*. 2010;17(6):1471–1474.
- Blogowski W, Deskur A, Budkowska M, et al. Selected cytokines in patients with pancreatic cancer: a preliminary report. *PLoS One*. 2014;9(5):e97613.
- Kowanetz M, Wu X, Lee J, et al. Granulocyte-colony stimulating factor promotes lung metastasis through mobilization of Ly6G+Ly6C+ granulocytes. *Proc Natl Acad Sci U S A*. 2010;107(50):21248–21255.
- Vinzens S, Zindel J, Zweifel M, Rau T, Gloor B, Wochner A. Granulocyte colony-stimulating factor producing anaplastic carcinoma of the pancreas: case report and review of the literature. *Anticancer Res*. 2017;37(1):223–228.
- Schweizerhof M, Stösser S, Kurejova M, et al. Hematopoietic colony-stimulating factors mediate tumor-nerve interactions and bone cancer pain. *Nat Med*. 2009;15(7):802–807.
- Bharadwaj U, Li M, Zhang R, Chen C, Yao Q. Elevated interleukin-6 and G-CSF in human pancreatic cancer cell conditioned medium suppress dendritic cell differentiation and activation. *Cancer Res*. 2007;67(11):5479–5488.
- Pickup MW, Owens P, Gorska AE, et al. Development of aggressive pancreatic ductal adenocarcinomas depends on granulocyte colony stimulating factor secretion in carcinoma cells. *Cancer Immunol Res*. 2017;5(9):718–729.
- Phan VT, Wu X, Cheng JH, et al. Oncogenic RAS pathway activation promotes resistance to anti-VEGF therapy through G-CSF-induced neutrophil recruitment. *Proc Natl Acad Sci U S A*. 2013;110(15):6079–6084.

Cancer Management and Research**Dovepress****Publish your work in this journal**

Cancer Management and Research is an international, peer-reviewed open access journal focusing on cancer research and the optimal use of preventative and integrated treatment interventions to achieve improved outcomes, enhanced survival and quality of life for the cancer patient. The manuscript management system is completely online and includes

a very quick and fair peer-review system, which is all easy to use. Visit <http://www.dovepress.com/testimonials.php> to read real quotes from published authors.

Submit your manuscript here: <https://www.dovepress.com/cancer-management-and-research-journal>