

Risk factors for pulmonary arterial hypertension in patients with tuberculosis-destroyed lungs and their clinical characteristics compared with patients with chronic obstructive pulmonary disease

Yong Suk Jo¹
Ju-Hee Park²
Jung Kyu Lee²
Eun Young Heo²
Hee Soon Chung²
Deog Kyeom Kim²

¹Division of Pulmonary and Critical Care Medicine, Department of Internal Medicine, Seoul National University College of Medicine, Seoul, Republic of Korea; ²Division of Pulmonary and Critical Care Medicine, Department of Internal Medicine, Seoul Metropolitan Government-Seoul National University Boramae Medical Center, Seoul National University College of Medicine, Seoul, Republic of Korea

Correspondence: Deog Kyeom Kim
Division of Pulmonary and Critical Care Medicine, Department of Internal Medicine, Seoul Metropolitan Government-Seoul National University Boramae Medical Center, Seoul National University College of Medicine, 20 Boramaero-5-Gil, Dongjak-Gu, Seoul, 156-707, Republic of Korea
Tel +82 2 870 2228
Fax +82 2 831 2826
Email kimdkmd@gmail.com

Background and objective: There are limited data on pulmonary arterial hypertension (PAH) in patients with tuberculosis-destroyed lung (TDL), a sequela of pulmonary tuberculosis. We identified the risk factors for PAH and their effects on acute exacerbation and mortality in patients with TDL, as well as the clinical differences in patients with chronic obstructive pulmonary disease (COPD) and PAH.

Methods: A retrospective cohort study was conducted from 2010 through 2015 in a municipal referral hospital in South Korea. PAH was defined when echocardiographic pulmonary arterial pressure (PAP) was >40 mmHg. The clinical features and course of TDL patients with or without PAH were evaluated and differences between patients with COPD and PAH were analyzed.

Results: Among the 195 patients with TDL, echocardiographic data were available in 53 patients, and their mean PAP was 50.72 ± 23.99 mmHg. The PAH group ($n=37$) had a smaller lung volume (forced vital capacity % predicted, 51.55% vs 72.37%, $P<0.001$) and more extensively destroyed lungs (3.27 lobes vs 2 lobes, $P<0.001$) than those in the non-PAH group ($n=16$). A higher PAP was significantly correlated with a higher frequency of acute exacerbation ($r=0.32$, $P=0.02$). Multivariate analyses did not reveal any significant risk factors contributing to PAH in patients with TDL. Compared to COPD patients with PAH, TDL patients with PAH have smaller lung volume but a less severe airflow limitation. Tricuspid regurgitation and a D-shaped left ventricle during diastole were more frequently observed in TDL patients. The risk of exacerbation was not different between patients with PAH in COPD and TDL.

Conclusion: PAH in patients with TDL was associated with severity of lung destruction but risk of exacerbation and mortality did not significantly differ between patients with PAH and without PAH.

Keywords: tuberculous destroyed lung, pulmonary arterial hypertension, chronic obstructive pulmonary disease, exacerbation, risk factor

Introduction

Pulmonary tuberculosis (PTB) can result in tuberculosis-destroyed lung (TDL), which is caused when parenchyma is destroyed, lymph nodes become obstructed, the bronchi undergo necrosis, and a secondary infection occurs.¹⁻³ Decreased lung and airway volume in patients with TDL is often characterized as a progressive airflow limitation and aggravated by recurrent exacerbation resembling chronic obstructive pulmonary disease (COPD), despite inherent pathophysiological properties.⁴⁻⁷

Pulmonary arterial hypertension (PAH) is reported in 20%–40% of chronic respiratory disease and is related to the severity of underlying conditions.^{8,9} PAH with/without right heart dysfunction is closely linked to aggravation of chronic lung conditions and a poor prognosis.^{4,10,11} Although the precise mechanism of PAH in patients with chronic lung disease has not been identified, chronic hypoxemia may induce endothelial dysfunction and vascular remodeling during systemic inflammation, and is thought to contribute.^{11–15}

TDL is relatively common in PTB endemic areas including South Korea^{16,17} and the destroyed lung architecture increases the risk for hemoptysis, superimposed bacterial infection, and reactivation of tuberculosis (TB), which is associated with the high mortality and morbidity of patients with TDL.^{5–7,18,19} The extent of structural devastation is a known prognostic factor in patients with TDL.^{18,19} However, the prevalence and clinical implications of PAH with/without right heart dysfunction in patients with TDL have rarely been reported, and little information is available on the characteristics of patients with TDL and PAH or the risk factors for PAH in patients with TDL. This study evaluated the risk factors for PAH with/without right heart dysfunction in patients with TDL and the clinical implications of PAH for exacerbation and mortality. We also identified the clinical differences between patients with PAH and TDL and those with COPD, because advanced PTB can cause extensive lung parenchymal destruction over the years and this causes airflow obstruction, similar to COPD, despite a different pathophysiology.

Methods

Subjects and study design

Patients with TDL were recruited retrospectively based on the International Classification of Diseases 10 (code B90.9) at Boramae Medical Center, a municipal referral center and Seoul National University-affiliated hospital in South Korea, from January 1, 2010, to December 31, 2015. We defined TDL using radiographic findings of lung parenchymal destruction, loss of lung volume, and a definite history of PTB. We enrolled patients with destroyed lung in one or more lobes, who underwent at least one spirometry test while having a stable status, and who were >18 years old. Patients with active TB, non-tuberculous mycobacterial infection, lung cancer, or a history of lung resection surgery were excluded.

Demographic findings, comorbid conditions, chest X-ray findings with or without chest computed tomography (CT), lung function, and cardiac function as assessed by two-dimensional Doppler transthoracic echocardiography (2D echo) were collected. The extent of TB-destroyed lung

was analyzed according to the lobar distribution. The upper and lower lobes and right middle lobe were counted as one lobe each, and the lingular segment was regarded as a separate lobe. Acute exacerbation was defined as an unexpected visit to an emergency department or admission due to worsening respiratory symptoms. We identified patients with COPD who had echocardiographic data during the same study period as those for patients with TDL. However, matching was not performed due to an insufficient number of cases.

This study was approved by the Institutional Review Board (IRB) of Boramae Medical Center (IRB no 20160616/16-2016-72/071) and the IRB did not require that written informed consent be obtained due to the retrospective nature of the study design and medical records used.

Assessment of right heart function

The gold standard for measuring systolic pulmonary arterial pressure (SPAP) is right heart catheterization. However, it is rarely performed in patients with chronic lung disease because of invasiveness and cost. A noninvasive method used to measure SPAP and right ventricular (RV) function, and allows for precise measurements of the pulmonary circulation, is 2D echo.²⁰ Echocardiographic parameters were obtained by an experienced sonographer using a dedicated machine (Vivid 7; GE Medical Systems, Horten, Norway). All measurements were performed according to current American Society of Echocardiography and European Association of Echocardiography guidelines.^{21,22} We assessed RV dysfunction through the presence of PAH, presence and severity of tricuspid regurgitation (TR), and dilated inferior vena cava (IVC) with/without plethora.²¹ Although there is no universal consensus on the definition of PAH in chronic lung disease, a large cohort study showed that mean SPAP of 40 mmHg was a survival determinant in patients with COPD.²³ Therefore, we adopted 40 mmHg as the cut-off value for diagnosing PAH.

We also collected data on brain N-terminal fragment of brain natriuretic peptide, which is secreted and increases in response to cardiac wall stress, as a serum marker for RV dysfunction.^{24,25}

Statistical analyses

Patients with TDL and PAH (PAH group) and without PAH (non-PAH group) were compared. Additionally, the PAH group was compared with patients with PAH and COPD (COPD group).

The chi-square test was used to compare categorical variables, and Student's *t*-test was applied for continuous variables. We performed univariate and multivariate logistic regression

analyses using Firth's penalized-likelihood approach to compensate for the small sample size after adjusting for confounders, to identify the risk factors contributing to PAH. Radiographic findings and the involved lung lobes allowed multiple responses. Pearson's correlation analysis was applied to identify the relationship between pulmonary arterial pressure (PAP) and frequency of exacerbation. We acquired data regarding all-cause mortality from the National Statistical Office. We analyzed inter-group differences in clinical outcomes, including exacerbation and mortality, using Kaplan–Meier methods. A P -value <0.05 was considered significant. All analyses were carried out using STATA version 14.2 (StataCorp LP, College Station, TX, USA).

Results

Clinical characteristics of patients with TDL

Among 195 patients with TDL, echocardiographic data were available for 53 patients (Figure 1). Approximately 67% of the patients were male. Mean age was 63.47 years and 25.20 years was the mean interval between being previously diagnosed with TB and the time when TDL was identified. Approximately 47% of the patients were ex- or current smokers, and mean smoking amount was 28.8 pack-years. Mean forced vital capacity (FVC) and forced expiratory volume in 1 sec (FEV_1) were 2.09 L (62.63% predicted) and 1.23 L (52.26% predicted), respectively (Table 1).

The majority of patients with TDL (144 patients, 73.8%) were using inhaled bronchodilators with or without an inhaled corticosteroid (data not shown).

The most common radiographic features were traction bronchiectasis, atelectasis of at least one lung lobe and emphysema and/or bullae, sequentially, and either the right upper or left upper lobe was involved in 192 patients (98.46%). The mean extent of lung involvement was 2.37 regions when both lungs were divided into six regions and, the more regions destroyed, the lower the FEV_1 and the higher the PAH observed (Table 1, Figure S1).

Echocardiographic parameters of right heart function in patients with TDL

Mean PAP was 50.72 mmHg (range, 21.1–144.0 mmHg) and TR was observed in 47 (88.7%) patients with minimal to mild (38.1%) and moderate to severe (31.9%) severity. A D-shaped left ventricle during diastole caused by rapid filling pressure of the right ventricle was found in eleven (20.7%) patients, and dilatation of the IVC with or without plethora was observed in ten (18.9%) patients.

Comparisons of clinical features between the PAH and non-PAH groups

The PAH group was younger and more female dominant than non-PAH group. FVC and FEV_1 were significantly lower in the PAH group and the airflow limitation (FEV_1/FVC

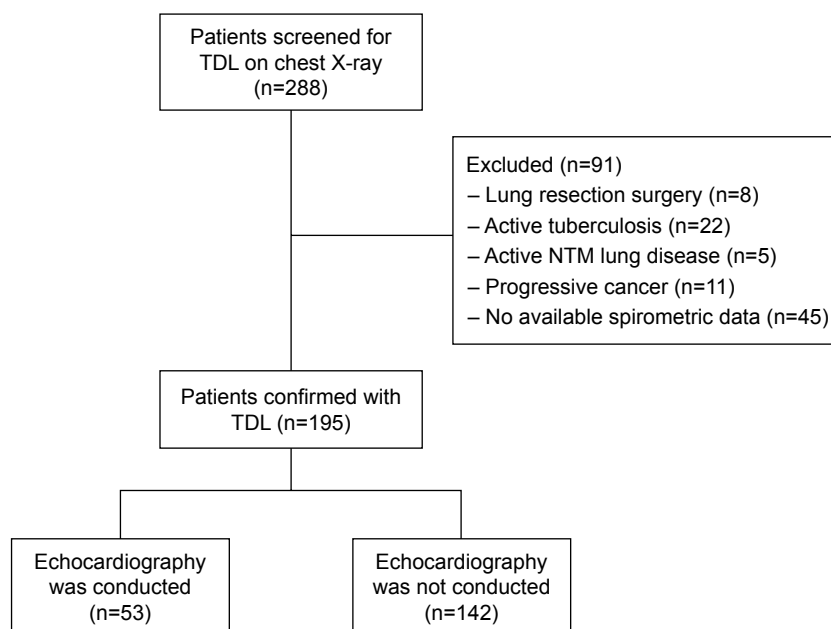


Figure 1 Flow diagram of the study.

Abbreviations: TDL, tuberculosis-destroyed lung; NTM, non-tuberculous mycobacterium.

Table 1 Clinical characteristics of patients with TDL (N=195)

Characteristics	Value
Sex, male	131 (67.2)
Age, years	63.5±11.5
Body mass index, kg/m ²	19.6±3.7
Smoking status	
Never; ex; current	63; 63; 28
Smoking amount, pack-years	28.8±23.2
Time since PTB diagnosis, years*	25.2±15.0
Comorbidities	
Diabetes mellitus	27 (13.8)
Hypertension	53 (27.2)
Ischemic heart disease	5 (2.6)
Arrhythmia	15 (7.7)
Chronic kidney disease	2 (1.0)
History of malignancy†	12 (6.1)
Spirometry	
FVC (L)	2.1±0.8
FVC (% predicted)	62.6±19.9
FEV ₁ (L)	1.2±0.5
FEV ₁ (% predicted)	52.3±20.0
FEV ₁ /FVC	52.3±20.0
Positive BDR‡	19 (9.7)
Oxygen inhalation at home	26 (13.3)
Radiological findings	
Traction bronchiectasis	163 (83.6)
Atelectasis	89 (45.6)
Emphysema and/or bullae	63 (32.3)
Pleural thickening and/or calcification	43 (22.0)
Cavity with/without fungus ball	59 (30.3)
Hypertrophied bronchial artery	32 (16.4)
Chronic empyema	12 (6.1)
Destroyed lobe	
Bilateral; right only; left only	91; 52; 52
Upper lobe, either RUL or LUL	192 (98.5)
Extent of lung involvement§, number of regions	2.4±1.1

Notes: Data are presented in number (%) or mean ± standard deviation. *Time interval between diagnosis of pulmonary tuberculosis and TDL. †Previous history of malignancy consisted of colorectal cancer (six), advanced gastric cancer (three) and one patient each for bladder, laryngeal, and breast cancer, respectively. ‡Positive bronchodilator response means elevated FEV₁ ≥ 12% and ≥ 200 mL from baseline FEV₁ after inhalation of two puffs of salbutamol. §Number of involved regions when the lung was divided in six regions.

Abbreviations: TDL, tuberculosis-destroyed lung; PTB, pulmonary tuberculosis; FVC, forced vital capacity; FEV₁, forced expiratory volume in 1 sec; BDR, bronchodilator response; RUL, right upper lobe; LUL, left upper lobe.

ratio) tended to be more severe in the PAH group than in the non-PAH group (Table 2). The most common radiographic feature was traction bronchiectasis in both groups and atelectasis and bronchial artery hypertrophy were more commonly observed in patients with PAH than in the non-PAH group. The extent of destroyed lung lesion was greater in the PAH group than in the non-PAH group and the more lobes destroyed, the lower the lung volume and the more severe the PAH (Figure S1). Additionally, acute exacerbation of respiratory symptoms was increased as the PAP increased

(Figure 2) and was more frequently seen in the PAH group than in the non-PAH group, but no significant difference was observed after adjustment for confounders (Table 2, Figure 3A). Overall mortality tended to be higher in the PAH group, but no significant difference was detected after adjusting for age, sex, and lung function (hazard ratio, 1.07; $P=0.89$, 95% confidence interval, 0.42–2.70) (Figure S2).

The univariate analysis revealed that male sex, younger age, lower lung volume, and greater lung parenchymal destruction were related to the development of PAH in patients with TDL, but these relationships were no longer significant in the multivariate analysis after adjusting for possible confounding factors (Table S1).

Comparison between PAH group and patients with COPD and PAH

When we compared the clinical characteristics of the PAH group with those of patients with COPD accompanied by PAH, older males and ever-smokers were more common in the COPD group. Lung volume was smaller but a less severe airflow limitation was found in the PAH group (Table 3). Mean PAP did not differ between the groups, but patients with moderate to severe TR and a D-shaped left ventricle during diastole were more common in the PAH group. The frequency of acute exacerbation was higher in the PAH group than in the COPD group, but after adjusting for age, sex, body mass index, pack-years of smoking, and FEV₁, the risk for acute exacerbation did not differ between the groups (Table 3, Figure 3B).

Discussion

We analyzed the clinical and radiographic characteristics of patients with TDL and PAH by comparing the non-PAH and COPD groups. The clinical implications of PAH in patients with TDL on acute exacerbation and overall mortality were elucidated.

PTB is a prevalent disease in East Asia²⁶ and can result in extensive parenchymal destruction of the lungs as a complication, namely, TDL, which increases morbidity and mortality.^{5–7,16–19} PAH with/without right heart dysfunction may develop from chronic lung disease and is regarded as a risk factor for clinical deterioration.²⁷ Although TDL can be a condition to which PAH contributes, few reports are available on PAH and its clinical importance in patients with TDL.

A few studies have reported airflow limitations in patients with TDL^{19,28,29} and a decline in FEV₁ as time passes. Acute exacerbations are observed in patients with TDL, similar to

Table 2 Comparison of clinical characteristics of patients with TDL according to the presence of PAH

Variables	TDL with PAH (n=37)	TDL without PAH (n=16)	P-value
Sex, male	19 (51.3)	14 (87.5)	0.01
Age, years	65.1±12.0	73.5±10.5	0.02
BMI, kg/m ²	19.8±4.0	19.0±3.9	0.52
Ever smoker [†]	15 (40.5)	10 (71.4)	0.12
Smoking amount, pack-years	29.6±26.3	42.6±25.9	0.24
Time since PTB diagnosis, years*	32.1±13.9	32.5±18.9	0.94
Echocardiographic findings			
Ejection fraction (%)	60.6±12.0	58.6±16.4	0.62
Pulmonary artery pressure	60.2±23.4	30.0±3.9	<0.01
TR, moderate to severe	14 (42.4)	1 (7.1)	0.02
D-shaped left ventricle	11 (29.7)	0 (0)	0.01
IVC dilatation	10 (27.0)	0 (0)	0.02
Plethora	8 (21.6)	0 (0)	0.04
Pro-BNP, pg/mL	2,614.4±4,501.4	2,683.1±4,608.6	0.97
Comorbidities			
Diabetes mellitus	6 (16.2)	3 (18.7)	0.82
Hypertension	15 (40.5)	8 (50.0)	0.52
Arrhythmia	7 (18.7)	5 (31.2)	0.32
History of malignancy	3 (8.1)	2 (12.5)	0.62
Oxygen inhalation at home	20 (51.3)	0 (0)	<0.01
Spirometry			
FVC (L)	1.6±0.6	2.4±0.7	<0.01
FVC (% predicted)	51.5±18.2	72.4±16.9	<0.01
FEV ₁ (L)	0.9±0.5	1.4±0.5	<0.01
FEV ₁ (% predicted)	42.5±18.3	67.9±22.5	<0.01
FEV ₁ /FVC	59.6±18.9	63.7±18.6	0.48
Positive BDR	3 (8.1)	2 (12.5)	0.62
Radiographic findings			
Traction bronchiectasis	29 (82.9)	14 (87.5)	0.67
Atelectasis	20 (55.6)	4 (25.0)	0.04
Emphysema and/or bullae	17 (56.7)	6 (37.5)	0.22
Hypertrophied bronchial artery	8 (25.8)	0 (0)	0.03
History of BAE [#]	7 (18.9)	3 (18.7)	0.99
Destroyed lobe			
Right only; left only	5 (13.5); 26 (70.3)	3 (18.7); 6 (37.5)	0.06
Upper lobe involvement [‡]	36 (97.3)	15 (93.7)	0.53
Extent of lung involvement [‡]	3.3±1.1	2±1.0	<0.01
Clinical outcome			
Acute exacerbation (yes)	29 (78.4)	5 (31.2)	<0.01
Frequency of exacerbation, (n/year)	1.6±1.5	0.6±1.0	0.01
Mortality	22 (59.5)	6 (37.5)	0.14

Notes: [†]Ever smoker means sum of ex- and current smokers. *Time interval between diagnosis of pulmonary tuberculosis and TDL. [‡]Either right or left upper lobe involvement were included. [‡]Number of involved regions when the lung was divided in six regions. [#]One patient who received bronchial artery embolization in COPD group revealed focal bronchiectasis on computed tomography of the chest. Data are presented in number (%) or mean ± standard deviation.

Abbreviations: TDL, tuberculosis-destroyed lung; PAH, pulmonary arterial hypertension; BMI, body mass index; PTB, pulmonary tuberculosis; TR, tricuspid regurgitation; IVC, inferior vena cava; BNP, brain natriuretic peptide; FVC, forced vital capacity; FEV₁, forced expiratory volume in 1 sec; BDR, bronchodilator response; BAE, bronchial artery embolization.

those with COPD.^{7,30} TDL and COPD have some common clinical manifestations and courses, but the mechanism of PAH in patients with TDL has rarely been explored and no observational human studies have been performed about PAH in patients with TDL. Chronic hypoxemia, increased angiogenesis, and increases in serum vascular endothelial growth factor level have been proposed as possible causes

of the development of PAH in patients with TDL.^{11,14,31} In addition, compression of alveolar vessels by lung parenchymal atelectasis, which is similar to emphysema in patients with COPD, and changes in the operation of vessels and lymphatics caused by parenchymal destruction have been predicted to play a role in the development of PAH in patients with TDL.^{8,11}

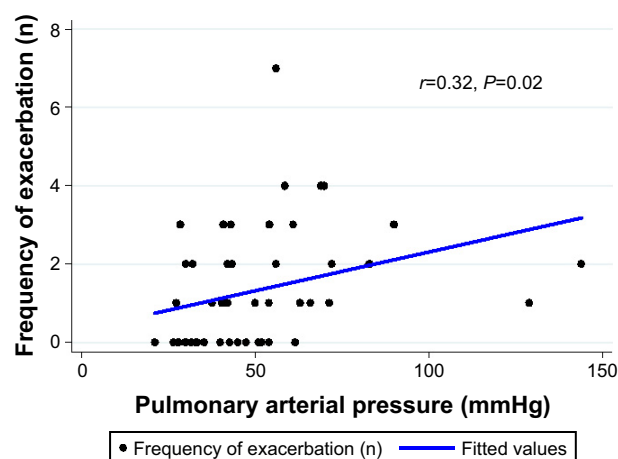


Figure 2 The association between acute exacerbation and pulmonary arterial pressure measured by echocardiography in patients with TDL.

Abbreviation: TDL, tuberculosis-destroyed lung.

Parenchymal destruction and its impact on changes in spirometry are described in our results and the results were very similar to those in a multicenter study by Rhee et al,³² in which patients with TDL showed less obstructive (FEV_1/FVC) and more severely reduced lung volume (FVC , FEV_1) compared with patients with COPD. The airflow limitation in patients with TDL may be caused by mechanical destruction, fixed airway stenosis, altered lung compliance, or dynamic contraction of airway smooth muscle, resulting in small airway collapse and air trapping.²⁹

In this study, PAH was diagnosed in patients with TDL 32 years after PTB had been diagnosed (Table 2), even though established radiographic features may not have changed markedly for years. Interestingly, the mean age of

patients with COPD and PAH was in the mid-70s, older than those with TDL and PAH (Table 3). Considering that the development of COPD generally begins in the 40s, Kessler et al³³ showed that PAH develops in 25% of patients with moderate COPD after approximately 7 years with an average rate of increase in PAP of 0.4 mmHg/year. It is expected to take >30 years until PAH is diagnosed in a patient with COPD, which is similar to the interval to diagnose PAH in a patient with TDL. Therefore, the underlying mechanisms of PAH in patients with TDL may overlap with those of COPD. Supporting this hypothesis, one study reported that TDL is a progressive rather than a stable disease by showing a pattern of decline in FEV_1 during follow-up similar to that of COPD.⁴⁻⁷

Overall mortality was 32.31% (63 of 195) in this study and tended to be higher in the PAH group than in the non-PAH group. An association was detected between the extent of TDL and PAH, although their contribution to mortality was not validated in this study. However, Ryu et al⁷ reviewed the clinical outcomes of 169 patients with TDL and reported more extensive lung destruction was revealed as a risk factor for a poorer prognosis. The PAH cut-off value of 40 mmHg in this study may have included patients with more severe COPD or TDL, considering approximately 10%–30% of moderate to severe COPD patients were reported to have elevated PAP.²⁷ As a result, the overall mortality increased to 59% in the PAH group, which may have contributed to the small difference in mortality between the groups.

As for the regional distribution of TDL, interestingly, left-sided lobes were more frequently involved in the PAH

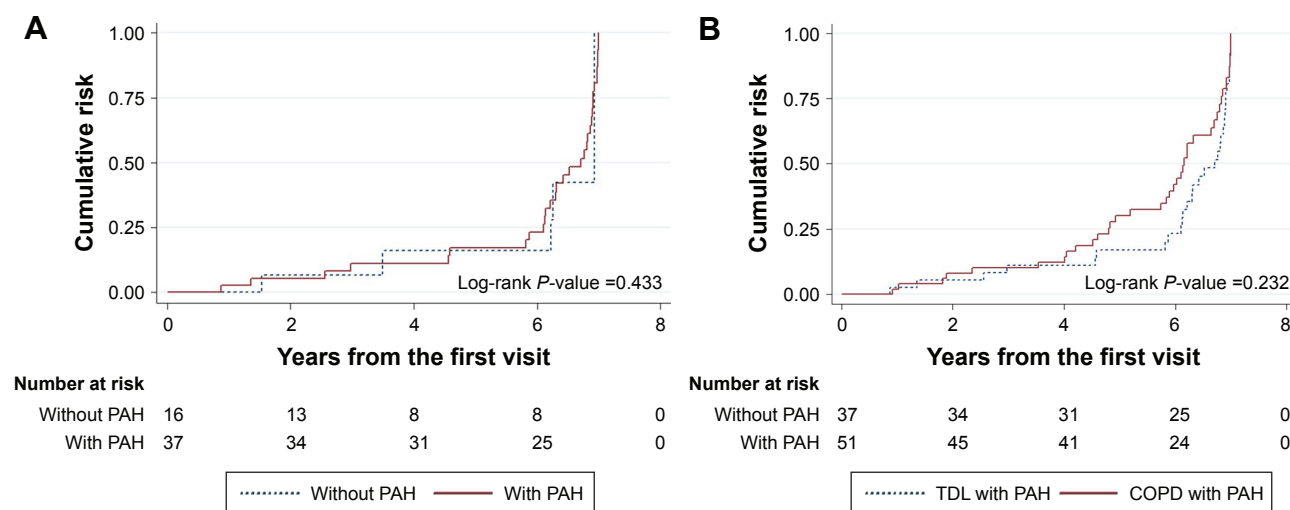


Figure 3 Acute exacerbation compared between patients with PAH and without PAH in TDL (A) and between patients with PAH in TDL and with PAH in COPD (B).

Abbreviations: COPD, chronic obstructive pulmonary disease; PAH, pulmonary arterial hypertension; TDL, tuberculosis-destroyed lung.

Table 3 Comparison of clinical characteristics in patients with PAH between TDL and COPD patients

Variables	Patients with PAH		P-value
	TDL (n=37)	COPD (n=51)	
Sex, male	19 (51.3)	40 (78.4)	0.01
Age, years	65.1±12.0	74.6±9.6	<0.01
BMI, kg/m ²	19.8±4.0	19.6±4.4	0.82
Ever smoker [†]	15 (40.5)	39 (76.5)	<0.01
Smoking amount, pack-years	29.6±26.3	44.7±23.9	0.04
Comorbidities			
Diabetes mellitus	6 (16.2)	10 (19.6)	0.68
Hypertension	15 (40.5)	30 (58.8)	0.09
Ischemic heart disease	0 (0)	4 (7.8)	0.08
Arrhythmia	7 (18.9)	9 (17.6)	0.88
History of malignancy	3 (8.1)	5 (9.8)	0.78
Lung function			
FVC (L)	1.6±0.6	2.3±0.7	<0.01
FVC (% predicted)	51.5±18.2	75.0±17.3	<0.01
FEV ₁ (L)	0.9±0.5	1.1±0.5	0.08
FEV ₁ (% predicted)	42.5±18.3	56.2±21.4	<0.01
FEV ₁ /FVC	59.6±18.9	49.8±14.5	0.01
Positive bronchodilator response	3 (8.1)	3 (5.9)	0.68
Oxygen inhalation at home	18 (48.6)	7 (13.7)	<0.01
Echocardiography			
Pulmonary artery pressure gradient	60.2±23.4	56.3±16.1	0.37
Moderate to severe TR	14 (37.8)	12 (23.5)	0.01
D-shaped left ventricle	11 (29.7)	4 (7.8)	0.01
IVC dilatation	10 (27.0)	8 (15.7)	0.19
Plethora	8 (21.6)	2 (3.9)	0.01
Clinical outcome			
Acute exacerbation (yes)	29 (78.4)	37 (72.5)	0.53
Frequency of acute exacerbation (n/year)	1.6±1.5	1.0±0.9	0.02
All-cause mortality	22 (59.5)	29 (56.9)	0.81

Notes: [†]Ever smoker means sum of ex- and current smokers. Data are presented in number (%) or mean ± standard deviation.

Abbreviations: PAH, pulmonary arterial hypertension; TDL, tuberculosis-destroyed lung; BMI, body mass index; FVC, forced vital capacity; FEV₁, forced expiratory volume in 1 sec; TR, tricuspid regurgitation; IVC, inferior vena cava.

group, but the right lung was also involved in most patients with destroyed left lobes. We tried to determine whether involvement of the left lung independently affected the development of PAH, but no significance was found in the multivariate analysis. This finding suggests that PAH will more likely develop with more extensively destroyed lung tissues and progress to poorer outcomes regardless of the regional distribution of PTB.

In the present study, 2D echo was only conducted on 53 of the 195 TDL patients during the stable period of follow-up because echocardiography is not a routine test and is not covered by insurance. Considering 2D echo was performed more frequently in TDL patients for whom a long time had

passed since the first diagnosis of PTB and who had lower lung volume with larger extent of lobes destruction, this suggested more advanced stage TDL patients tended to undergo echocardiography (Table S2).

This is the first report to characterize the clinical features of TDL in patients with PAH and to elucidate the implications of PAH on their clinical outcomes. Therefore, this study provides additional information to build on current knowledge. However, this study has several limitations to be considered. First, the retrospective study design may have introduced a selection bias, particularly when selecting patients with PAH, because echocardiography is not a routine examination in patients with TDL. Second, patients with COPD and PAH were not matched with patients with TDL and PAH due to a lack of availability of echocardiographic data, although mean PAP did not differ. Also, when we performed 1:1 propensity matched analysis (37 TDL with PAH vs 37 COPD with PAH), the results were not significantly different. Third, we could not evaluate disease-specific mortality rates because of limited data. Lastly, analyzing data from a small number of patients would be less likely to have statistical power to predict exacerbation and mortality.

In conclusion, PAH in patients with TDL was associated with the severity of lung destruction and led to more frequent exacerbation than that of TDL without PAH, but the risk of acute exacerbation did not differ from that of COPD with PAH, and all-cause mortality also did not differ between the groups. To understand prognostic contribution of PAH rather than the degree of lung destruction alone, a further prospective cohort study with a well-established echocardiography protocol to assess right heart function will be needed.

Disclosure

The authors report no conflicts of interest in this work.

References

- Freixa X, Portillo K, Paré C, et al. Echocardiographic abnormalities in patients with COPD at their first hospital admission. *Eur Respir J*. 2013;41(4):784–791.
- Bellocchia M, Masoero M, Ciuffreda A, et al. Predictors of cardiovascular disease in asthma and chronic obstructive pulmonary disease. *Multidiscip Respir Med*. 2013;8(1):58.
- Chaouat A, Naeije R, Weitzenblum E. Pulmonary hypertension in COPD. *Eur Respir J*. 2008;32(5):1371–1385.
- Lee JH, Chang JH. Lung function in patients with chronic airflow obstruction due to tuberculous destroyed lung. *Respir Med*. 2003;97(11):1237–1242.
- Kim SJ, Lee J, Park YS, et al. Effect of airflow limitation on acute exacerbations in patients with destroyed lungs by tuberculosis. *J Korean Med Sci*. 2015;30(6):737–742.
- Seo YK, Lee CH, Lee H-K, et al. Differences between patients with TB-destroyed lung and patients with COPD admitted to the ICU. *Tuberculosis and Respiratory Diseases*. 2011;70(4):323–329.

7. Ryu YJ, Lee JH, Chun EM, Chang JH, Shim SS. Clinical outcomes and prognostic factors in patients with tuberculous destroyed lung. *Int J Tuberc Lung Dis*. 2011;15(2):246–250.
8. Wrobel JP, Thompson BR, Williams TJ. Mechanisms of pulmonary hypertension in chronic obstructive pulmonary disease: a pathophysiologic review. *J Heart Lung Transplant*. 2012;31(6):557–564.
9. Sommer N, Dietrich A, Schermuly R, et al. Regulation of hypoxic pulmonary vasoconstriction: basic mechanisms. *Eur Respir J*. 2008;32(6):1639–1651.
10. Dheda K, Booth H, Huggett JF, Johnson MA, Zumla A, Rook GA. Lung remodeling in pulmonary tuberculosis. *J Infect Dis*. 2005;192(7):1201–1209.
11. Kim HY, Song KS, Goo JM, Lee JS, Lee KS, Lim TH. Thoracic sequelae and complications of tuberculosis. *Radiographics*. 2001;21(4):839–858.
12. Voelkel NF, Mizuno S, Bogaard HJ. The role of hypoxia in pulmonary vascular diseases: a perspective. *Am J Physiol Lung Cell Mol Physiol*. 2013;304(7):L457–L465.
13. Steiner MK, Syrkina OL, Kolliputi N, Mark EJ, Hales CA, Waxman AB. Interleukin-6 overexpression induces pulmonary hypertension. *Circ Res*. 2009;104(2):236–244.
14. Zangiabadi A, De Pasquale CG, Sajkov D. Pulmonary hypertension and right heart dysfunction in chronic lung disease. *Biomed Res Int*. 2014;2014:739674.
15. Hurdman J, Condliffe R, Elliot CA, et al. Pulmonary hypertension in COPD: results from the ASPIRE registry. *Eur Respir J*. 2013;41(6):1292–1301.
16. Kyung SY, Kim YJ, An CH, Lee SP, Park JW, Jeong SH. Clinical findings of the patients with legal pulmonary disability – short-term follow-up at a tertiary university hospital in Korea. *Korean J Intern Med*. 2008;23(2):72–77.
17. Hong SB, Oh BJ, Kim YS, et al. Characteristics of mechanical ventilation employed in intensive care units: a multicenter survey of hospitals. *J Korean Med Sci*. 2008;23(6):948–953.
18. Stenmark KR, Fagan KA, Frid MG. Hypoxia-induced pulmonary vascular remodeling cellular and molecular mechanisms. *Circ Res*. 2006;99(7):675–691.
19. Menezes AM, Hallal PC, Perez-Padilla R, et al. Tuberculosis and airflow obstruction: evidence from the PLATINO study in Latin America. *Eur Respir J*. 2007;30(6):1180–1185.
20. D'Alto M, Romeo E, Argiento P, et al. Accuracy and precision of echocardiography versus right heart catheterization for the assessment of pulmonary hypertension. *Int J Cardiol*. 2013;168(4):4058–4062.
21. Rudski LG, Lai WW, Afilalo J, et al. Guidelines for the echocardiographic assessment of the right heart in adults: a report from the American Society of Echocardiography: endorsed by the European Association of Echocardiography, a registered branch of the European Society of Cardiology, and the Canadian Society of Echocardiography. *J Am Soc Echocardiogr*. 2010;23(7):685–713.
22. Evangelista A, Flachskampf F, Lancellotti P, et al. European Association of Echocardiography recommendations for standardization of performance, digital storage and reporting of echocardiographic studies. *Eur J Echocardiogr*. 2008;9(4):438–448.
23. Cuttica MJ, Kalhan R, Shlobin OA, et al. Categorization and impact of pulmonary hypertension in patients with advanced COPD. *Respir Med*. 2010;104(12):1877–1882.
24. Leuchte HH, Baumgartner RA, Nounou ME, et al. Brain natriuretic peptide is a prognostic parameter in chronic lung disease. *Am J Respir Crit Care Med*. 2006;173(7):744–750.
25. Andersen CU, Mellekjær S, Nielsen-Kudsk JE, et al. Echocardiographic screening for pulmonary hypertension in stable COPD outpatients and NT-proBNP as a rule-out test. *COPD*. 2012;9(5):505–512.
26. World Health Organization. *Global tuberculosis report 2016*; 2016. Available from: http://www.who.int/tb/publications/global_report/en/. Accessed July 20, 2017.
27. Elwing J, Panos RJ. Pulmonary hypertension associated with COPD. *Int J Chron Obstruct Pulmon Dis*. 2008;3(1):55–70.
28. Ehrlich RI, Adams S, Baatjies R, Jeebhay MF. Chronic airflow obstruction and respiratory symptoms following tuberculosis: a review of South African studies. *Int J Tuberc Lung Dis*. 2011;15(7):886–891.
29. Jordan TS, Spencer EM, Davies P. Tuberculosis, bronchiectasis and chronic airflow obstruction. *Respirology*. 2010;15(4):623–628.
30. Vestbo J, Edwards LD, Scanlon PD, et al. Changes in forced expiratory volume in 1 second over time in COPD. *N Engl J Med*. 2011;365(13):1184–1192.
31. Alatas F, Alatas O, Metintas M, Ozarslan A, Erginel S, Yildirim H. Vascular endothelial growth factor levels in active pulmonary tuberculosis. *Chest*. 2004;125(6):2156–2159.
32. Rhee CK, Yoo KH, Lee JH, et al. Clinical characteristics of patients with tuberculosis-destroyed lung. *Int J Tuberc Lung Dis*. 2013;17(1):67–75.
33. Kessler R, Faller M, Weitzenblum E, et al. “Natural history” of pulmonary hypertension in a series of 131 patients with chronic obstructive lung disease. *Am J Respir Crit Care Med*. 2001;164(2):219–224.

Supplementary materials

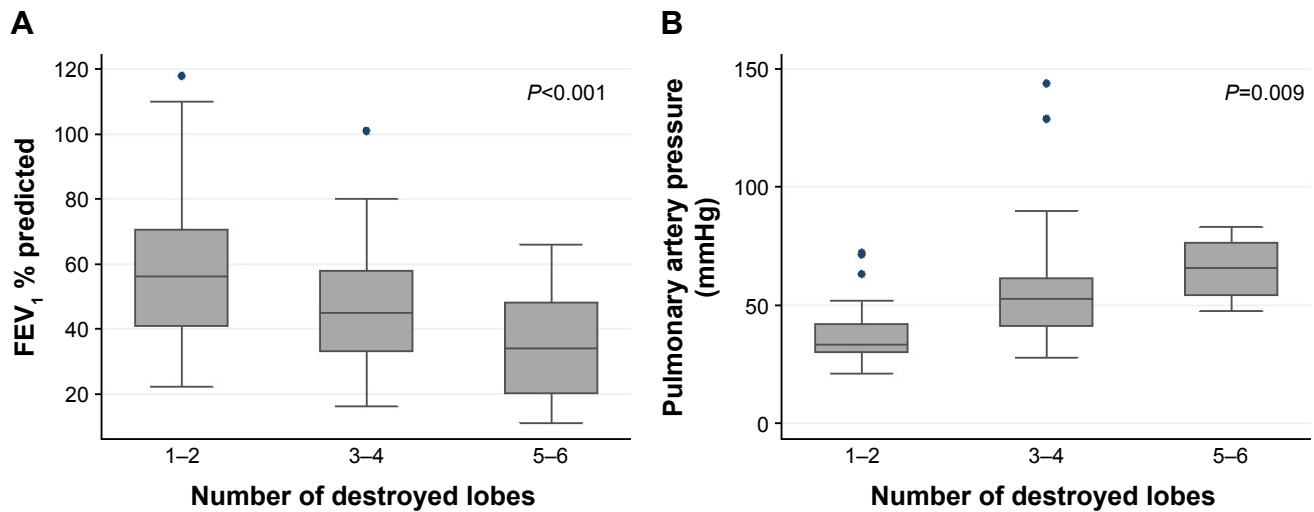


Figure S1 The association of the extent of TDL with both FEV₁ % predicted and pulmonary artery pressure.

Notes: (A) Mean FEV₁ % predicted (\pm SD) according to the extent of destroyed lobes, (B) mean pulmonary artery pressure (\pm SD) according to the extent of destroyed lobes.

Abbreviations: FEV₁, forced expiratory volume in 1 sec; TDL, tuberculosis-destroyed lung.

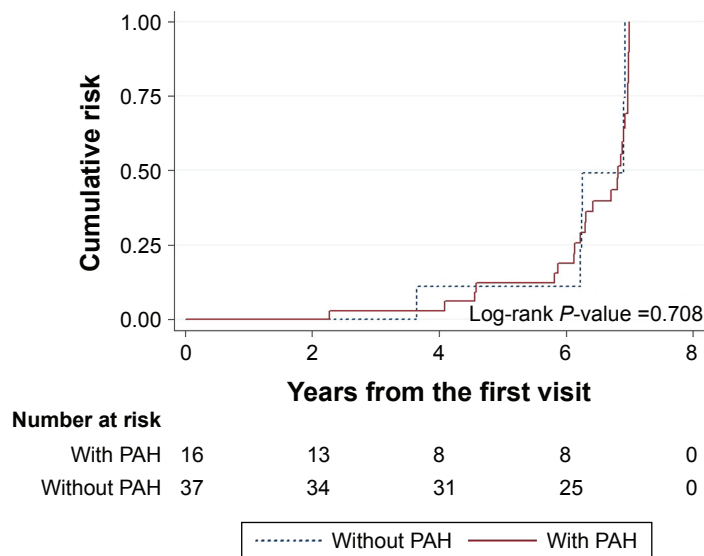


Figure S2 Overall mortality according to the presence of PAH in patients with TDL.

Abbreviations: PAH, pulmonary hypertension; TDL, tuberculosis-destroyed lung.

Table S1 Multivariate analysis of risk factors contributing to pulmonary hypertension

Variables	Univariate analysis		Multivariate analysis*	
	OR (95% CI)	P-value	OR (95% CI)	P-value
Sex, male	6.63 (1.32–33.37)	0.02	0.28 (0.00–20.81)	0.57
Age, years	0.93 (0.88–0.99)	0.03	1.01 (0.92–1.10)	0.86
BMI, kg/m ²	1.05 (0.90–1.23)	0.51	0.95 (0.73–1.23)	0.72
Ever smoker [†]	0.35 (0.09–1.36)	0.13		
Smoking amount, pack-years	0.98 (0.95–1.01)	0.24	0.98 (0.95–1.01)	0.37
Time interval between the 1st pulmonary TB and TDL (years)	1.00 (0.96–1.04)	0.94		
Pro-BNP, pg/mL	1.00 (1.00–1.00)	0.97		
Diabetes mellitus	0.84 (0.18–3.87)	0.82		
Hypertension	0.68 (0.21–2.22)	0.52		
Arrhythmia	0.51 (0.13–1.96)	0.33		
History of malignancy	0.62 (0.09–4.11)	0.62		
FVC (% predicted)	0.94 (0.90–0.98)	0.00	0.97 (0.91–1.04)	0.42
FEV ₁ (% predicted)	0.94 (0.91–0.98)	0.00	0.97 (0.91–1.02)	0.24
FEV ₁ /FVC	0.99 (0.96–1.02)	0.47		
Positive BDR	0.62 (0.09–4.11)	0.62		
Traction bronchiectasis	0.69 (0.12–3.87)	0.67		
Atelectasis	3.75 (1.01–13.88)	0.05		
Emphysema and/or bullae	2.18 (0.63–7.56)	0.22		
Pleural thickening and/or calcification	0.80 (0.21–3.03)	0.74		
Cavity with/without fungal ball	1.15 (0.32–4.16)	0.83		
Hypertrophied bronchial artery	N/A	N/A		
BAE	1.01 (0.22–4.53)	1.00		
Right lung involvement	Reference			
Left lung involvement	1.94 (0.32–11.76)	0.47		
Bilateral lung involvement	5.05 (1.24–20.62)	0.02		
Extent of lung involvement, [‡] number of regions	3.49 (1.58–7.73)	0.00	1.21 (0.54–2.70)	0.64

Notes: *This model was adjusted for age, sex, BMI, smoking status, lung function, and extent of lung lesion. These variables were analyzed by Firth's penalized-likelihood approach, the maximum-likelihood-based logistic regression estimator, because of small samples. [†]Ever smoker means sum of ex- and current smokers. [‡]Number of involved regions when the lung was divided in six regions.

Abbreviations: BMI, body mass index; TB, tuberculosis; TDL, tuberculosis-destroyed lung; BNP, brain natriuretic peptide; FVC, forced vital capacity; FEV₁, forced expiratory volume in 1 sec; BDR, bronchodilator response; BAE, bronchial artery embolization; N/A, not applicable; OR, odds ratio.

Table S2 Clinical characteristics of patients with TDL with or without 2D echocardiography (N=195)

Characteristics	TDL with 2D echo (n=53)	TDL without 2D echo (n=142)	P-value
Sex, male	33 (62.3)	98 (69.0)	0.37
Age, years	67.6±12.1	61.9±10.8	<0.01
BMI, kg/m ²	19.5±3.9	19.7±3.5	0.76
Smoking status			
Never; ex; current smoker	21; 22; 3	42; 41; 25	0.05
Smoking amount, pack-year	34.2±26.4	26.3±21.4	0.16
Time since PTB diagnosis, years*	32.2±15.3	22.2±13.9	<0.01
Comorbidities			
Diabetes mellitus	9 (17.0)	18 (12.7)	0.44
Hypertension	23 (43.4)	30 (21.1)	<0.01
Ischemic heart disease	2 (3.8)	3 (2.1)	0.51
Arrhythmia	12 (22.6)	3 (2.1)	<0.01
Chronic kidney disease	0 (0)	2 (1.4)	0.38
History of malignancy	5 (9.4)	7 (4.9)	0.24
Spirometry			
FVC (L)	1.8±0.7	2.2±0.7	<0.01
FVC (% predicted)	57.3±19.9	64.1±18.3	0.03
FEV ₁ (L)	1.1±0.5	1.3±0.5	0.02
FEV ₁ (% predicted)	49.7±24.3	52.4±19.3	0.41
FEV ₁ /FVC	60.1±17.9	59.4±18.2	0.91
Positive BDR [†]	5 (9.4)	14 (9.9)	0.93
Oxygen inhalation at home	18 (34.0)	8 (5.6)	<0.01
Radiological findings			
Traction bronchiectasis	43 (81.1)	120 (84.5)	0.57
Atelectasis	24 (45.3)	65 (45.8)	0.95
Emphysema and/or bullae	23 (50.0)	40 (28.2)	0.01
Pleural thickening and/or calcification	13 (24.5)	30 (21.1)	0.61
Cavity with/without fungus ball	16 (33.3)	43 (30.3)	0.69
Hypertrophied bronchial artery	8 (17.0)	24 (16.9)	0.98
Chronic empyema	2 (3.8)	10 (7.0)	0.40
Destroyed lobe			
Bilateral; right only; left only	32; 13; 8	59; 39; 44	0.03
Upper lobe, either RUL or LUL	51 (96.2)	141 (99.3)	0.12
Extent of lung involvement, [‡] number of regions	2.9±1.2	2.2±1.1	<0.01

Notes: *Time interval between diagnosis of pulmonary tuberculosis and TDL. [†]Positive bronchodilator response means elevated FEV₁ ≥12% and ≥200 mL from baseline FEV₁ after inhalation of two puffs of salbutamol. [‡]Number of involved regions when the lung was divided in six regions. Data are presented in number (%) or mean ± standard deviation.

Abbreviations: TDL, tuberculosis-destroyed lung; BMI, body mass index; PTB, pulmonary tuberculosis; FVC, forced vital capacity; FEV₁, forced expiratory volume in 1 sec; BDR, bronchodilator response; RUL, right upper lobe; LUL, left upper lobe.

International Journal of COPD

Publish your work in this journal

The International Journal of COPD is an international, peer-reviewed journal of therapeutics and pharmacology focusing on concise rapid reporting of clinical studies and reviews in COPD. Special focus is given to the pathophysiological processes underlying the disease, intervention programs, patient focused education, and self management protocols.

Submit your manuscript here: <http://www.dovepress.com/international-journal-of-chronic-obstructive-pulmonary-disease-journal>

This journal is indexed on PubMed Central, MedLine and CAS. The manuscript management system is completely online and includes a very quick and fair peer-review system, which is all easy to use. Visit <http://www.dovepress.com/testimonials.php> to read real quotes from published authors.