

Inhaled indacaterol for the treatment of COPD patients with destroyed lung by tuberculosis and moderate-to-severe airflow limitation: results from the randomized INFINITY study

Cheong-Ju Kim,¹ Hyoung-Kyu Yoon,² Myung-Jae Park,³ Kwang-Ha Yoo,⁴ Ki-Suck Jung,⁵ Jeong-Woong Park,⁶ Seong Yong Lim,⁷ Jae Jeong Shim,⁸ Yong Chul Lee,⁹ Young-Sam Kim,¹⁰ Yeon-Mok Oh,¹¹ Song Kim,¹² Chul-Gyu Yoo¹³

¹Department of Internal Medicine, National Health Insurance System Ilsan Hospital, Koyang, ²Division of Pulmonology, Department of Internal Medicine, St Mary's Hospital, College of Medicine, The Catholic University of Korea, ³Division of Respiratory and Critical Care Medicine, Kyung Hee University Hospital, Kyung Hee University, Seoul, ⁴Department of Internal Medicine, Konkuk University School of Medicine, Gwangjin-gu, ⁵Division of Pulmonary, Allergy and Critical Care Medicine, Department of Medicine, Hallym University Sacred Heart Hospital, Hallym University Medical School, Anyang-si, ⁶Division of Pulmonary and Allergy Medicine, Gachon University Gil Medical Center, Incheon, ⁷Division of Pulmonary and Critical Care Medicine, Department of Medicine, Kangbuk Samsung Hospital, Sungkyunkwan University School of Medicine, ⁸Department of Internal Medicine, Korea University College of Medicine, Seoul, ⁹Department of Internal Medicine and Research Center for Pulmonary Disorders, Chonbuk National University Medical School, Jeonbuk, ¹⁰Department of Internal Medicine, Yonsei University College of Medicine, ¹¹Department of Pulmonary and Critical Care Medicine, Asan Medical Center, University of Ulsan College of Medicine, ¹²Clinical Development and Medical Affairs, Novartis Korea Ltd., Seoul, ¹³Division of Pulmonary and Critical Care Medicine, Department of Internal Medicine, Seoul National University College of Medicine, Seoul, Korea

Correspondence: Chul-Gyu Yoo
Division of Pulmonary and Critical Care Medicine, Department of Internal Medicine, Seoul National University College of Medicine, 103, Daehak-ro, Jongno-gu, 03080 Seoul, Korea
Email cgyoo@snu.ac.kr

Background and objective: Pulmonary tuberculosis (TB) is a risk factor for chronic obstructive pulmonary disease (COPD); however, few clinical studies have investigated treatment effectiveness in COPD patients with destroyed lung by TB. The Indacaterol effectiveness in COPD patients with Tuberculosis history (INFINITY) study assessed the efficacy and safety of once-daily inhaled indacaterol 150 µg for the treatment of Korean COPD patients with destroyed lung by TB and moderate-to-severe airflow limitation.

Methods: This was a multicenter, double-blind, parallel-group study, in which eligible patients were randomized (1:1) to receive either once-daily indacaterol 150 µg or placebo for 8 weeks. The primary efficacy endpoint was change from baseline in trough forced expiratory volume in 1 s at Week 8; the secondary endpoints included changes in transition dyspnea index score and St George's Respiratory Questionnaire for COPD score at Week 8. Safety was evaluated over 8 weeks.

Results: Of the 136 patients randomized, 119 (87.5%) completed the study treatment. At Week 8, indacaterol significantly improved trough forced expiratory volume in 1 s versus placebo (treatment difference [TD] 140 mL, $P < 0.001$). Statistically significant improvement in transition dyspnea index score (TD = 0.78, $P < 0.05$) and numerical improvement in St George's Respiratory Questionnaire for COPD score (TD = -2.36, $P = 0.3563$) were observed with indacaterol versus placebo at Week 8. Incidence of adverse events was comparable between the treatment groups.

Conclusion: Indacaterol provided significantly superior bronchodilation, significant improvement in breathlessness and improved health status with comparable safety versus placebo in Korean COPD patients with destroyed lung by TB and moderate-to-severe airflow limitation.

Keywords: indacaterol, COPD, tuberculosis, airflow limitation, lungs

Introduction

Chronic obstructive pulmonary disease (COPD) is a chronic lung disease characterized by progressive inflammation of the airways and persistent airflow limitation.¹ COPD is considered as one of the major causes of morbidity and mortality worldwide.¹ Evidence from epidemiologic studies shows that tuberculosis (TB) can be a significant contributor for the development of COPD, particularly in TB-endemic areas.^{2,3} A recent meta-analysis showed that TB and COPD are strongly correlated in countries with higher TB incidence rates such as South Africa and the Philippines³ (annual TB incidence rates of 1,003/100,000 and 265/100,000 population, respectively). Pulmonary TB can cause a destructive change in pulmonary parenchyma and over a period of time, it may lead to chronic respiratory obstruction, mainly COPD.

This condition is termed as “destroyed lung by TB”.⁴ Bronchial and parenchymal structural changes resulting in reduction in lung volume loss, bronchiectasis, bronchovascular distortion and fibrotic bands are common radiologic findings in lungs destroyed by TB.⁵ Previous reports have suggested that a TB-destroyed lung is associated with chronic airflow limitation (forced expiratory volume in 1 s [FEV₁]/forced vital capacity <0.7); thus, coexistence of COPD should be considered in the differential diagnosis.

There is no specific treatment guideline for COPD patients with destroyed lung by TB,⁶ and there are no data based on controlled studies on the treatment efficacy in COPD patients with destroyed lung by TB. We, therefore, conceptualized the Indacaterol effectiveness in COPD patients with Tuberculosis history (INFINITY) study to evaluate the efficacy and safety of a long-acting β_2 -agonist (LABA) indacaterol in COPD patients with destroyed lung by TB. Indacaterol, an inhaled, once-daily (o.d.) LABA, was the choice as the active treatment in our study due to the following attributes: provides 24 h bronchodilation with an effect significantly greater than that of salmeterol and similar to that of tiotropium.^{7,8} Indacaterol has been shown to provide clinically and statistically significant improvement in health status, quality of life and reduction in exacerbation rate compared to salmeterol and tiotropium, with a safety profile similar to that of placebo.^{9,10} Here, we report the efficacy and safety outcomes from the INFINITY study.

Methods

Study design

The study was a multicenter, randomized, double-blind, placebo-controlled, 8-week trial conducted in South Korea (Figure 1). The first patient was enrolled on February 25, 2013 and the last patient completed the study on September 1,

2014. After screening, eligible patients were randomized in a 1:1 ratio (by interactive response technology) to treatment with double-blind indacaterol 150 μ g o.d. or placebo o.d. (morning) delivered through the Breezhaler[®] device (Novartis Pharma AG, Stein, Switzerland). A salbutamol inhaler was provided as rescue medication. Institutional review boards and ethics committees at the participating centers approved the study (see Table S1 for a full list of the institutional review board and ethics committee for each center). This study was conducted in accordance with the Declaration of Helsinki, Good Clinical Practice and local regulatory requirements. All participants provided written informed consent for this study. Clinical trial registration number: NCT01778062; URL: www.ClinicalTrials.gov.

Patients

Patients were aged ≥ 19 years, had moderate-to-severe COPD (stage II or III, as defined in the Global Initiative for Chronic Obstructive Lung Disease 2010 criteria) and were required to have a post-bronchodilator FEV₁ of at least 30% and <80% of the predicted normal and a post-bronchodilator FEV₁/forced vital capacity ratio <0.70. All patients had a history of TB with no change in the chest imaging test over the past 1 year. They were required to have at least one finding of destructed pulmonary parenchyma in the chest X-ray, among the following: 1) lung volume loss, 2) bronchovascular distortion, 3) fibrosis, 4) bronchiectasis, and the sum of all legion volumes equivalent to over one-third of one lung confirmed by a radiologist or a pulmonology specialist. Both smokers and nonsmokers were eligible to enter the trial. Key exclusion criteria included patients with a history of asthma, respiratory infection within the previous 6 weeks and a history of COPD worsening that required hospitalization within the previous 6 weeks.

Assessments

Spirometry (FEV₁) was performed at randomization and at Weeks 4 and 8 in the morning (between 8 and 11 am). Dyspnea was evaluated using the baseline dyspnea index at baseline and the transition dyspnea index (TDI) at Weeks 4 and 8. St George's Respiratory Questionnaire for COPD (SGRQ-C) was used to evaluate the changes in health status of the patients at baseline and at Weeks 4 and 8. Safety was assessed by recording adverse events (AEs) and serious AEs (SAEs) throughout the study; in addition, electrocardiograms, hematology, clinical chemistry, urinalysis, physical condition and vital signs (pulse and blood pressure) were assessed. The primary objective of this study was to show superiority of indacaterol in trough FEV₁ (defined as the mean of FEV₁

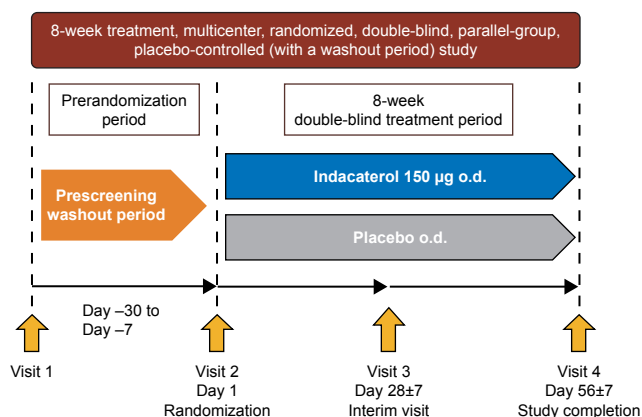


Figure 1 Study design.

Abbreviation: o.d., once daily.

values at 23 h 10 min and 23 h 45 min post-dose) versus placebo at Week 8. The secondary objectives included assessment of TDI focal score and SGRQ-C total score at Week 8 for indacaterol versus placebo. We also assessed the incidence of acute exacerbation and safety over 8 weeks of treatment period. COPD assessment test (CAT) score at Week 8 was investigated as an exploratory objective.

Statistical analyses

A sample size of 132 patients (indacaterol, 66; placebo, 66) was intended for randomization and this number was sufficient to detect a 120 mL difference in trough FEV₁ at Week 8 between indacaterol and placebo at 5% significance level with an estimated 80% power, based on previous phase III indacaterol studies. However, patients with TB history could have been excluded from previous COPD trials with indacaterol, so there may be no prior data in these study populations. A standard deviation of 225 mL and 15% dropout rates were assumed.

Intent-to-treat (ITT) population and per protocol (PP) population were utilized for all efficacy analyses. The ITT set included all patients who received at least one dose of the investigational drug and had primary efficacy endpoint after administration of the investigational drug, and the PP set was a subset of the ITT population without any major protocol deviations (study drug compliance <80% or >120%, inclusion or exclusion criteria violation, etc). All safety analyses were performed on the safety population, which included all patients who received at

least one dose of the study medication. Last observation carried forward was used to impute missing values.

Mean, standard deviation, minimum and maximum were calculated for continuous variables, and frequency and proportion were calculated for categorical variables. All the test statistics used for this data analysis were the results of the two-sided test, and the statistical significance level was 0.05. Analysis of covariance was used to test the difference between the two groups. All statistical analyses were performed using SAS release 9.4 (SAS Institute Inc., Cary, NC, USA).

Results

Of 197 patients screened, 136 were randomized, 119 completed the study and 17 discontinued the study treatment. Reasons for study discontinuation were major protocol deviation (n=7), AEs/SAEs (n=4) and consent withdrawal (n=6). One patient in the placebo group was excluded from the ITT set due to “failure to perform” primary efficacy evaluation, and 94 patients (indacaterol, n=51; placebo, n=43) were included in the PP set (Figure 2).

Demographics and baseline characteristics

The demographic and baseline clinical characteristics were similar between indacaterol and control groups (Table 1). However, the proportion of male population was slightly higher in the indacaterol treatment group. There was no report of exacerbations in the previous year (92.7%) for a majority

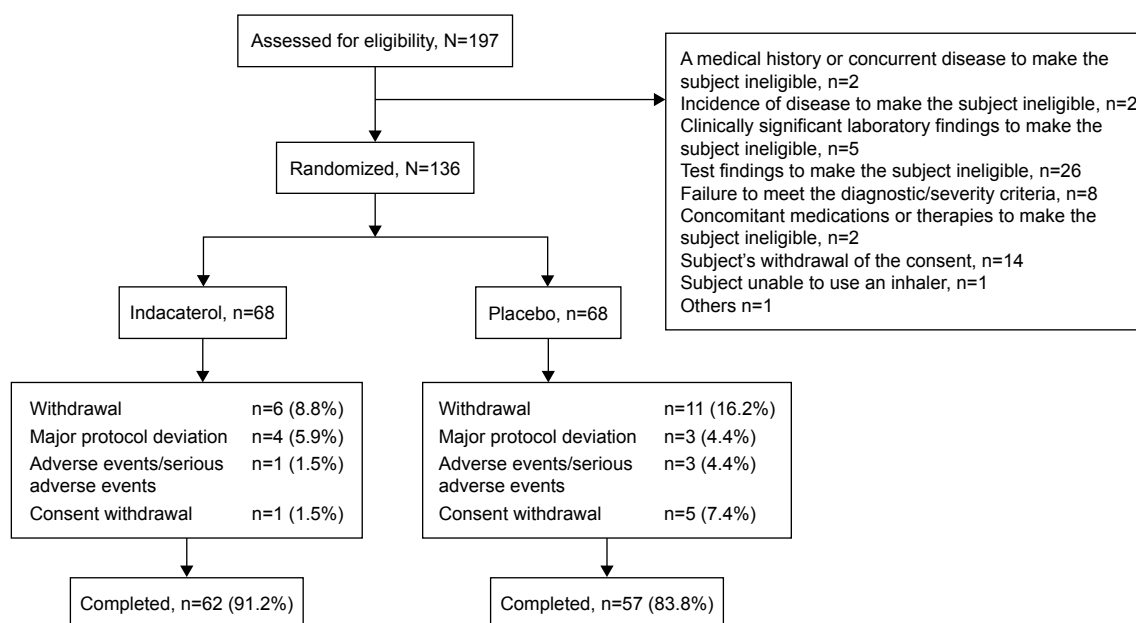


Figure 2 Patient disposition.

Table 1 Baseline demographic and clinical characteristics

Parameter	Indacaterol 150 µg o.d. (n=68)	Placebo (n=68)
Age, years, mean (SD)	63.9 (10.9)	64.6 (9.2)
Males	45 (66.2)	40 (58.8)
COPD duration, years, mean (SD)	4.2 (4.0)	4.3 (3.7)
Previous COPD-related medication	55 (80.9)	58 (85.3)
COPD exacerbation in previous year		
Yes	4 (5.9)	6 (8.8)
No	64 (94.1)	62 (91.2)
Smoking history		
Yes	34 (50.0)	36 (52.9)
No	34 (50.0)	32 (47.1)
Smoker's pack-year, mean (SD)	33.9 (26.9)	27.9 (15.6)
Radiologic findings, n (%)		
Lung volume loss	59 (86.8)	56 (82.4)
Bronchovascular distortion	32 (47.1)	31 (45.6)
Fibrosis	42 (61.8)	46 (67.7)
Post-bronchodilator FEV ₁ , L	1.41 (0.40)	1.39 (0.43)
Post-bronchodilator FEV ₁ , % predicted	54.5 (12.4)	54.8 (11.8)
Post-bronchodilator FEV ₁ /FVC, %	54.7 (10.0)	53.2 (10.5)
BDI focal score ^a	7.4 (2.0)	7.5 (1.9)
SGRQ-C total score ^b	37.6 (18.2)	40.1 (21.0)

Notes: Data are presented as n (%) unless otherwise stated. ^aThree patients from each group had missing values; ^bvalues are from the ITT population.

Abbreviations: BDI, baseline dyspnea index; COPD, chronic obstructive pulmonary disease; FEV₁, forced expiratory volume in 1 s; FVC, forced vital capacity; ITT, intent-to-treat; o.d., once daily; SD, standard deviation; SGRQ-C, St George's Respiratory Questionnaire for COPD.

of the patients. The most common radiologic findings in both groups were lung volume loss (84.6%), followed by fibrosis (64.7%) and bronchiectasis (51.5%).

Efficacy

Spirometry

Trough FEV₁ at Week 8 (24 h post-dose) was significantly improved with indacaterol compared with placebo, with treatment differences of 0.14 L ($P<0.001$; Figure 3). Patients

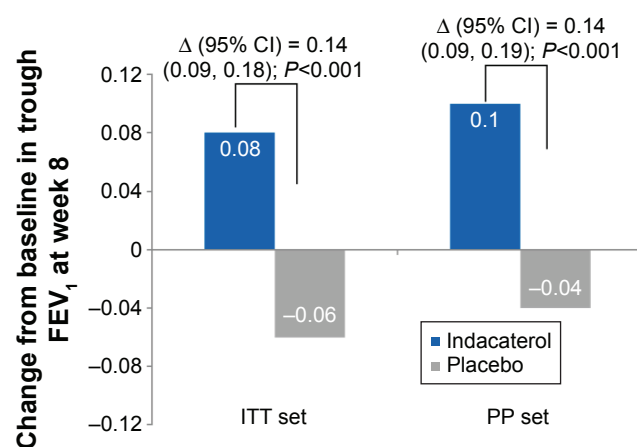


Figure 3 Change from baseline in trough FEV₁ at Week 8 (ITT set and PP set).

Notes: Data are presented as LS means. Δ , Treatment difference LS mean.

Abbreviations: CI, confidence interval; FEV₁, forced expiratory volume in 1 s; ITT, intent-to-treat; LS, least squares; PP, per protocol; SE, standard error.

treated with indacaterol showed statistically significantly improved FEV₁ versus placebo, regardless of the smoking status (treatment differences in the range of 0.13–0.16 L) and also the previous use of fixed-dose combination of inhaled β_2 -agonist and inhaled corticosteroids (ICS; treatment differences in the range of 0.11–0.15 L; Table 2).

Dyspnea, health status and patient symptoms

Indacaterol treatment resulted in significant improvement in TDI focal score at Week 8 with a treatment difference of 0.78 and 0.81 (ITT set and PP set, respectively) compared with placebo ($P=0.0465$; Table 3(A)). At Week 8, the proportion of patients with a clinically important increase of ≥ 1 in TDI score was 44.1% with indacaterol versus 27.3% with placebo in the ITT set ($P=0.042$); this percentage was 47.1% with indacaterol versus 18.6% with placebo in the PP set ($P=0.004$), as shown in Figure 4A.

The mean SGRQ-C total score change from baseline was greater with indacaterol than with placebo, and the treatment difference was not statistically significant (-2.35 , $P=0.356$ and -4.79 , $P=0.118$ from ITT set and PP set, respectively; Table 3(B)). The percentages of patients with a clinically important improvement from baseline SGRQ-C total score of 4 units were numerically higher in the indacaterol-treated group compared with placebo in both ITT (45.6% versus 40.9%; $P=0.585$) and PP (45.1% versus 39.5%; $P=0.587$; Figure 4B) sets.

The CAT score slightly increased from baseline by 0.25 points with indacaterol, and also with placebo by 1.80 points. The difference between the two groups was not statistically significant ($P=0.192$; Table 4).

Safety

Table 5 shows the overall incidence of AEs and those reported most frequently. COPD worsening, upper respiratory tract infection and nasopharyngitis were the common AEs in both groups. COPD worsening occurred with a high frequency in the placebo group. The proportions of patients with SAEs in the indacaterol and placebo groups were 4.4% and 1.5%, respectively. All SAEs were assessed to be not related to the study drug by the investigator. There were no deaths during the study.

Discussion

Our study provides evidence that indacaterol improves the lung function and symptom control in COPD patients with destroyed lung by TB. Treatment with indacaterol showed significantly higher trough FEV₁ and increased TDI scores

Table 2 Change from baseline in trough FEV₁ at week 8 (A) and analysis of change from baseline in FEV₁ at week 8 by smoking status and previous use of fixed-dose combination of inhaled β_2 -agonist and ICS (B)

	Indacaterol, LS, mean \pm SE	Placebo, LS, mean \pm SE	Treatment difference, LS, mean (95% CI)	P-value
A				
ITT	0.08 \pm 0.02	-0.06 \pm 0.02	0.14 (0.09, 0.18)	<0.001
PP	0.10 \pm 0.02	-0.04 \pm 0.02	0.14 (0.09, 0.19)	<0.001
B				
Smoking status				
ITT				
Yes	0.07 \pm 0.03	-0.07 \pm 0.02	0.14 (0.07, 0.21)	<0.001
No	0.09 \pm 0.02	-0.05 \pm 0.02	0.14 (0.08, 0.19)	<0.001
PP				
Yes	0.11 \pm 0.02	-0.05 \pm 0.02	0.16 (0.09, 0.23)	<0.001
No	0.10 \pm 0.02	-0.03 \pm 0.03	0.13 (0.05, 0.20)	0.001
ICS/LABA use				
ITT				
Yes	0.05 \pm 0.03	-0.07 \pm 0.03	0.12 (0.03, 0.20)	0.01
No	0.10 \pm 0.02	-0.05 \pm 0.02	0.15 (0.10, 0.21)	<0.001
PP				
Yes	0.08 \pm 0.03	-0.04 \pm 0.03	0.12 (0.03, 0.20)	0.007
No	0.11 \pm 0.02	-0.04 \pm 0.02	0.15 (0.09, 0.21)	<0.001

Abbreviations: CI, confidence interval; FEV₁, forced expiratory volume in 1 s; ICS, inhaled corticosteroid; ITT, intent-to-treat; LABA, long-acting β_2 -agonist; LS, least squares; PP, per protocol; SE, standard error.

than treatment with placebo at Week 8. To the best of our knowledge, this is the first prospective, randomized controlled study evaluating the efficacy and safety of a long-acting bronchodilator in a specific COPD subpopulation.

COPD patients are reported to have a threefold increased risk of developing TB, compared with the general population.¹¹ COPD and TB also share several risk factors such as smoking, diabetes and nutritional imbalance. Approximately >50% of the patients in this study had a smoking history; since smoking is a well-known risk factor for COPD, it may be difficult to attribute COPD in patients from this study to either smoking or TB. Nevertheless, a study in Colombia reported that the correlation between TB and airway obstruction was stronger than that observed between cigarette smoking and airway obstruction.¹²

Table 3 Change from baseline in TDI focal scores at Week 8 (A) and change from baseline in SGRQ-C scores at Week 8 (B)

	Indacaterol, mean \pm SD	Placebo, mean \pm SD	Treatment difference, mean (95% CI)	P-value
A				
ITT	1.01 \pm 2.15	0.23 \pm 2.38	0.78 (0.01, 1.56)	0.047
PP	1.14 \pm 2.09	0.33 \pm 1.30	0.81 (0.08, 1.54)	0.024
B				
ITT	-2.69 \pm 13.00	-0.33 \pm 16.30	-2.35 (-7.39, 2.68)	0.356
PP	-4.34 \pm 11.90	0.45 \pm 16.57	-4.79 (-10.64, 1.06)	0.118

Abbreviations: CI, confidence interval; ITT, intent-to-treat; PP, per protocol; SD, standard deviation; SGRQ-C, St George's Respiratory Questionnaire for COPD; TDI, transition dyspnea index.

Interestingly, certain treatments for COPD may contribute to the related risk for TB. A Taiwanese study revealed that use of high-dose ICS (fluticasone treatment >500 mg/day) was an independent risk factor for the development of active TB in patients with COPD (hazard ratio, 4.74; 95% confidence interval: 1.01, 22.37; $P=0.014$).¹³ In another Korean study by Kim et al, ICS use increased the risk of pulmonary TB and the risk was greater in patients who had radiologic sequelae of prior pulmonary TB.¹⁴

To date, no treatment guidelines are available for patients with TB-destroyed lung and based on previous reports that TB can cause chronic airflow limitation,^{15,16} long-acting muscarinic antagonist or LABA + ICS have been used occasionally.^{6,17} Inhaled bronchodilators are recommended by the guidelines as the cornerstone of COPD treatment; however, there have been no studies to evaluate treatment options and outcomes in patients with concomitant TB sequelae. This can be a concern to the physicians in countries with higher prevalence rates of TB.

Indacaterol, an o.d. β_2 -agonist delivered by a single-dose dry powder inhaler, has been shown to provide effective control of symptoms, better lung function and quality of life compared with placebo and some of the other available bronchodilators, with a favorable safety profile.¹⁸ In our study, trough FEV₁ of patients in the indacaterol group was significantly improved after 8 weeks of treatment compared with those in placebo group, with the treatment difference 140 mL exceeding the minimum clinically important difference.

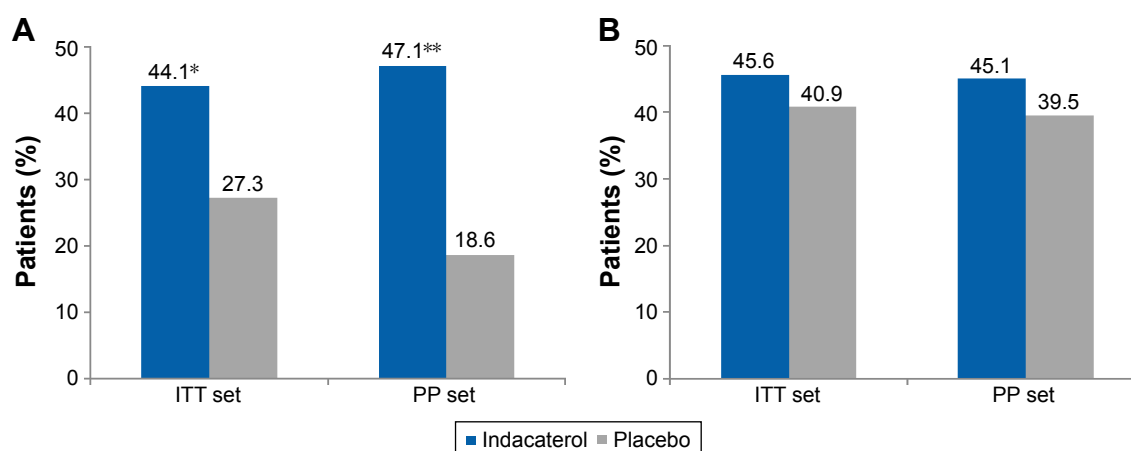


Figure 4 (A) Proportion of patients with a clinically important improvement from baseline in TDI total score (≥ 1 point; ITT and PP population). (B) Proportion of patients achieving MCID in St George's Respiratory Questionnaire score.

Notes: Data for TDI total score are least squares means. * $P < 0.05$ and ** $P < 0.01$ versus placebo.

Abbreviations: ITT, intent-to-treat; MCID, minimal clinically important difference; PP, per protocol; TDI, transition dyspnea index.

This result was consistent regardless of the smoking status or previous ICS + LABA medication use and similar to that observed in prior indacaterol phase III clinical trials, compared to placebo.^{19,20}

The bronchodilator effect of indacaterol was also accompanied by an improvement of symptom control in terms of dyspnea. However, the other secondary and exploratory variables, SGRQ-C total score and CAT, did not reach statistical significance, which may be due to the limited number of patients and short study duration. Safety and tolerability were similar between indacaterol and placebo, as shown by previous clinical trial data. The major strength of our study is the uniqueness of the study population, which was not included in large COPD clinical trials previously but represents a specific phenotype seen in TB-endemic areas. In addition, our prospective study design was robust, since previously reported studies were analyses using retrospective chart review or without any control arm. However, the present study was

conducted for 8 weeks, considering ethical concerns with patients in the placebo group; so, there are limitations to generalize the short-term results from this study.

In recent years, there has been increased evidence of the benefits of dual bronchodilation (LABA/long-acting muscarinic antagonist fixed-dose combination) compared with a single bronchodilator in COPD patients with moderate-to-severe airflow limitation. This study is valuable as it demonstrated the efficacy and safety of o.d. indacaterol 150 μ g in COPD patients with TB-destroyed lung, and we may expect future studies with dual bronchodilators in these patients for a long-term treatment period.

Conclusion

The INFINITY study demonstrated that the inhalation of indacaterol has a significant effect on spirometric parameters in COPD patients with destroyed lung by TB. Indacaterol provided significantly superior bronchodilation, significant

Table 4 Change from baseline in COPD assessment test scores

	Indacaterol, mean \pm SD	Placebo, mean \pm SD	Treatment difference, mean (95% CI)	P-value
ITT				
Visit 2	15.40 \pm 7.31	16.24 \pm 9.30	-0.84 (-3.69, 2.00)	0.559
Visit 4 ^a	15.65 \pm 8.08	17.89 \pm 8.53	-2.25 (-5.09, 0.59)	0.120
Difference (Visit 4 - Visit 2)	0.25 \pm 5.90	1.80 \pm 7.65	-1.55 (-3.88, 0.78)	0.192
PP				
Visit 2	15.37 \pm 8.03	16.30 \pm 8.72	-0.93 (-4.37, 2.51)	0.592
Visit 4	15.31 \pm 8.68	18.63 \pm 8.48	-3.31 (-6.85, 0.22)	0.066
Difference (Visit 4 - Visit 2)	-0.06 \pm 6.12	2.33 \pm 8.22	-2.38 (-5.33, 0.56)	0.121

Note: ^aLOCF was used to impute missing values at Visit 4.

Abbreviations: CI, confidence interval; ITT, intent-to-treat; LOCF, last observation carried forward; PP, per protocol; SD, standard deviation.

Table 5 Incidence of frequent adverse events and serious adverse events in treatment groups (safety set)

Parameter	Indacaterol (n=68)	Placebo (n=68)
Patients with any adverse event	20 (29.41)	30 (44.12)
COPD exacerbation	3 (4.4)	6 (8.8)
Upper respiratory tract infection	3 (4.4)	7 (10.3)
Nasopharyngitis	3 (4.4)	4 (5.6)
Hemoptysis	2 (2.9)	1 (1.5)
Cough	1 (1.5)	2 (2.9)
Pyrexia	0	2 (2.9)
Serious adverse events	3 (4.41)	1 (1.47)
Adverse events leading to discontinuation	1 (1.47)	3 (4.41)

Note: Data are presented as n (%).

Abbreviation: COPD, chronic obstructive pulmonary disease.

improvement in breathlessness, and showed a tendency to improve the health status, with comparable safety versus placebo in Korean COPD patients with destroyed lung by TB and moderate-to-severe airflow limitation. These findings support the benefits of indacaterol in the treatment management of these patients. This study will add value to treatment of COPD patients with TB history. Although it is difficult to ascertain the exact risk factor for COPD patients with destroyed lung by TB, the role of both smoking and TB in causing airflow obstruction cannot be ruled out. In light of the increasing incidence and detrimental effects of COPD and TB combined, it is imperative to have an effective treatment that provides better lung function and improved quality of life to COPD patients with destroyed lung by TB. Indacaterol, with its proven efficacy and safety in this study and as reported previously, can be a clinically efficacious treatment option for these patients.

Acknowledgments

The authors thank patients and staff at the participating centers in the study. The authors also thank Chiranjit Ghosh, PhD (professional medical writer; Novartis) for assistance in the preparation of this paper. These people received no compensation apart from their usual salary for their contributions. This study was funded by Novartis Korea Ltd., Seoul, South Korea. The sponsor funded the design/concept/analysis of the study and manuscript development. All investigators received fees from Novartis for conducting the study. The study results were previously presented as a poster at the APSR 2015 congress.

Disclosure

Song Kim is a Novartis employee. The other authors report no conflicts of interest in this work.

References

1. Global Strategy for the Diagnosis, Management and Prevention of COPD, Global Initiative for Chronic Obstructive Lung Disease. 2016. Available from: <http://goldcopd.org/>. Accessed May 5, 2016.
2. Halbert RJ, Natoli JL, Gano A, Badamgarav E, Buist AS, Mannino DM. Global burden of COPD: systematic review and meta-analysis. *Eur Respir J*. 2006;28(3):523–532.
3. Byrne AL, Marais BJ, Mitnick CD, Lecca L, Marks GB. Tuberculosis and chronic respiratory disease: a systematic review. *Int J Infect Dis*. 2015;32:138–146.
4. Hassan IS, Al-Jahdali HH. Obstructive airways disease in patients with significant post-tuberculous lung scarring. *Saudi Med J*. 2005;26(7):1155–1157.
5. Kim HY, Song KS, Goo JM, Lee JS, Lee KS, Lim TH. Thoracic sequelae and complications of tuberculosis. *Radiographics*. 2001;21(4):839–858.
6. Rhee CK, Yoo KH, Lee JH, et al. Clinical characteristics of patients with tuberculosis-destroyed lung. *Int J Tuberc Lung Dis*. 2013;17(1):67–75.
7. Donohue JF, Fogarty C, Lötvall J, et al; INHANCE Study Investigators. Once-daily bronchodilators for chronic obstructive pulmonary disease: indacaterol versus tiotropium. *Am J Respir Crit Care Med*. 2010;182(2):155–162.
8. Korn S, Kerwin E, Atis S, Amos C, Owen R, Lassen C; INSIST study group. Indacaterol once-daily provides superior efficacy to salmeterol twice-daily in COPD: a 12-week study. *Respir Med*. 2011;105(5):719–726.
9. Jones PW, Barnes N, Vogelmeier C, Lawrence D, Kramer B. Efficacy of indacaterol in the treatment of patients with COPD. *Prim Care Respir J*. 2011;20(4):380–388.
10. Cope S, Donohue JF, Jansen JP, et al. Comparative efficacy of long-acting bronchodilators for COPD: a network meta-analysis. *Respir Res*. 2013;14:100.
11. Inghammar M, Ekblom A, Engström G, et al. COPD and the risk of tuberculosis – a population-based cohort study. *PLoS One*. 2010;5(4):e10138.
12. Yakar HI, Gunen H, Pehlivan E, et al. The role of tuberculosis in COPD. *Int J Chron Obstruct Pulmon Dis*. 2017;12:323–329.
13. Shu CC, Wu HD, Yu MC, et al. Taiwan Anti-Mycobacteria Investigation (TAMI) Group. Use of high-dose inhaled corticosteroids is associated with pulmonary tuberculosis in patients with chronic obstructive pulmonary disease. *Medicine (Baltimore)*. 2010;89(1):53–61.
14. Kim JH, Park JS, Kim KH, Jeong HC, Kim EK, Lee JH. Inhaled corticosteroid is associated with an increased risk of TB in patients with COPD. *Chest*. 2013;143(4):1018–1024.
15. Willcox PA, Ferguson AD. Chronic obstructive airways disease following treated pulmonary tuberculosis. *Respir Med*. 1989;83(3):195–198.
16. Menezes AM, Hallal PC, Perez-Padilla R, et al. Latin American Project for the Investigation of Obstructive Lung Disease (PLATINO) Team. Tuberculosis and airflow obstruction: evidence from the PLATINO study in Latin America. *Eur Respir J*. 2007;30(6):1180–1185.
17. Yum HK, Park IN. Effect of inhaled tiotropium on spirometric parameters in patients with tuberculosis destroyed lung. *Tuberc Respir Dis (Seoul)*. 2014;77(4):167–171.
18. Seth HD, Sultan S, Gotfried MH. Role of indacaterol, a once-daily bronchodilator, in chronic obstructive pulmonary disease. *J Thorac Dis*. 2013;5(6):806–814.
19. Chapman KR, Rennard SI, Dogra A, Owen R, Lassen C, Kramer B; INDORSE Study Investigators. Long-term safety and efficacy of indacaterol, a long-acting β_2 -agonist, in subjects with COPD: a randomized, placebo-controlled study. *Chest*. 2011;140(1):68–75.
20. Feldman G, Siler T, Prasad N, et al. INLIGHT 1 study group. Efficacy and safety of indacaterol 150 microg once-daily in COPD: a double-blind, randomised, 12-week study. *BMC Pulm Med*. 2010;10:11.

Supplementary material

Table SI Full list of institutional review boards and ethics committees which approved this study

Site no	Site name	Principal investigator name
1	Seoul National University Hospital	Chul-Gyu Yoo
2	Kyung Hee University Medical Center	Myung-Jae Park
3	Konkuk University Medical Center	Kwang-Ha Yoo
4	Korea University Guro Hospital	Jae Jeong Shim
5	Asan Medical Center	Yeon-Mok Oh
6	Hallym University Sacred Heart Hospital	Ki-Suck Jung
7	Severance Hospital	Young-Sam Kim
8	Yeouido St Mary's Hospital	Hyoung-Kyu Yoon
9	Kangbuk Samsung Hospital	Seong Yong Lim
10	Gachon University Gil Medical Center	Jeong-Woong Park
11	NHIC Ilsan Hospital	Cheong-Ju Kim
12	Chonbuk National University Hospital	Yong Chul Lee

International Journal of COPD

Dovepress

Publish your work in this journal

The International Journal of COPD is an international, peer-reviewed journal of therapeutics and pharmacology focusing on concise rapid reporting of clinical studies and reviews in COPD. Special focus is given to the pathophysiological processes underlying the disease, intervention programs, patient focused education, and self management protocols.

This journal is indexed on PubMed Central, MedLine and CAS. The manuscript management system is completely online and includes a very quick and fair peer-review system, which is all easy to use. Visit <http://www.dovepress.com/testimonials.php> to read real quotes from published authors.

Submit your manuscript here: <http://www.dovepress.com/international-journal-of-chronic-obstructive-pulmonary-disease-journal>