

# Effect of blood type on survival of Chinese patients with esophageal squamous cell carcinoma

Jian Qin<sup>1,\*</sup>  
 San-Gang Wu<sup>2,\*</sup>  
 Jia-Yuan Sun<sup>3</sup>  
 Huan-Xin Lin<sup>3</sup>  
 Zhen-Yu He<sup>3</sup>  
 Qun Li<sup>3</sup>

<sup>1</sup>Department of Radiation Oncology of Clinical Cancer Center, the People's Hospital of Guangxi Zhuang Autonomous Region, Nanning, People's Republic of China;

<sup>2</sup>Department of Radiation Oncology, Xiamen Cancer Center, the First Affiliated Hospital of Xiamen University, Xiamen, People's Republic of China; <sup>3</sup>Sun Yat-sen University Cancer Center, State Key Laboratory of Oncology in South China, Department of Radiation Oncology, Collaborative Innovation Center of Cancer Medicine, Guangzhou, People's Republic of China

\*These authors contributed equally to this work

**Background:** The aim of this study was to evaluate the prognostic value of ABO blood group in Chinese patients with esophageal squamous cell carcinoma (ESCC) after esophagectomy.

**Methods:** This study was a retrospective review of the records of 548 patients with ESCC who received cytoreductive surgery between October 2002 and March 2007. The prognostic impact of ABO blood group on overall survival (OS) was analyzed.

**Results:** The median follow-up time was 37 months, and the 5-year OS was 43.3%. The overall 5-year OS was 41.2%, 49.7%, 44.0%, and 29.8% for the A, B, O, and AB groups, respectively ( $P=0.038$ ). Among patients with negative lymph nodes (LNs), the 5-year OS was 59.0%, 68.2%, 57.9%, and 28.6% for the A, B, O, and AB groups, respectively ( $P<0.001$ ), but blood type had no value in predicting the OS of patients with positive LNs ( $P=0.524$ ). In multivariate Cox regression analysis of all patients, ABO blood group was not an independent prognostic factor of OS. However, in patients with negative LNs, blood type was an independent prognostic factor of OS, and the higher risk of death for patients of type AB versus non-AB significant in multivariate analyses (hazard ratio [HR], 2.576; 95% confidence interval [CI], 1.349–4.919;  $P=0.004$ ).

**Conclusion:** ABO blood group is associated with survival in Chinese patients with ESCC. Patients with blood type AB had a significantly worse OS than patients with non-AB type, especially in patients with negative LNs.

**Keywords:** esophageal squamous cell carcinoma, ABO blood-group system, prognosis, lymph node, survival

## Introduction

Esophageal cancer (EC) is a highly fatal gastrointestinal malignancy.<sup>1</sup> In People's Republic of China, EC, which is predominantly squamous cell carcinoma (ESCC; 90% of cases), is the fifth most common cancer and the fourth leading cause of cancer-related deaths.<sup>2</sup> Lymph node (LN) metastasis, grade of differentiation, location of the primary tumor, and depth of primary tumor infiltration are the most common prognostic factors in ESCC, all of which are factors of the 7th edition of the Union for International Cancer Control and the American Joint Committee on Cancer (UICC/AJCC) Tumor, Node, Metastasis (TNM) staging system.<sup>3</sup> Although prognostic factors for ESCC have been intensively studied, including in the field of molecular biology, prognoses differ despite similar stages. Identification of biomarkers that are readily available, inexpensive, and reproducible could improve the prognosis of patients and help physicians in providing individualized therapies.

Recently, the association between ABO blood group and survival has been evaluated in several malignancies, including pancreatic cancer,<sup>4</sup> colon cancer,<sup>5</sup> nasopharyngeal carcinoma,<sup>6</sup> and breast cancer.<sup>7</sup> Previous studies have suggested that blood type B was associated with an increased risk of EC.<sup>8–10</sup> However, to date, controversy remains

Correspondences: Zhen-Yu He; Qun Li  
 Sun Yat-sen University Cancer Center,  
 651 Dongfeng East Road, Guangzhou  
 510060, People's Republic of China;  
 State Key Laboratory of Oncology in  
 South China, Department of Radiation  
 Oncology, Collaborative Innovation  
 Center of Cancer Medicine, Guangzhou,  
 People's Republic of China  
 Tel +86 20 87343543  
 Fax +86 20 87343392  
 Email hezhy@sysucc.org.cn;  
 liqu0799@126.com

over the clinical value of ABO blood group to predict the prognosis of ESCC.<sup>11–13</sup> Therefore, the aim of this retrospective analysis was to assess the relationship between blood type and survival among Chinese patients with ESCC who underwent esophagectomy as their primary treatment.

## Materials and methods

### Patients

This study enrolled 548 patients with ESCC who received radical esophagectomy between October 2002 and March 2007. The inclusion criteria were as follows: 1) resectable ESCC with radical esophagectomy and LN dissection; 2) staging of ESCC as primary (p)T1-3N0-3M0 according to the 7th edition of the UICC/AJCC TNM staging system; 3) negative surgical margin (R0); 4) no preoperative radiotherapy or chemotherapy; and 5) ESCC located in the thoracic esophagus. The study was performed in accordance with the Declaration of Helsinki and was approved by the ethics committee of Sun Yat-Sen University Cancer Center. All patients provided written informed consent for storage of their medical records in the hospital database and for use of this information in our research.

### Clinicopathological factors

Clinicopathological factors were used to assess the risk of death. Factors examined included age, sex, tumor location, pT stage, pN stage, histologic grade, smoking, alcohol consumption, and ABO blood group. An ever smoker was defined as one who smoked at least once a day for more than 1 year, and a drinker was defined as one who drank alcohol more than 100 mL/day for more than 1 year.

### Follow-up and survival endpoints

Follow-up was performed every 3–6 months after surgery via a hospital visit, telephone call, or letter. The endpoint of the study was overall survival (OS). OS was calculated as the period from the date of diagnosis to the date of death from any cause or to the date of the last follow-up.

### Statistical analysis

The  $\chi^2$  and Fisher's exact tests were used to analyze the differences between qualitative data. Survival rates were plotted by the Kaplan–Meier method and compared by using the log-rank test. A stepwise Cox regression model was used for multivariate analysis. Factors that were significant indicators of endpoints in the univariate analysis were included in the stepwise Cox regression analysis. All data were analyzed with the SPSS statistical software package, version 16.0

(IBM Corporation, Armonk, NY, USA). A  $P$ -value  $<0.05$  was considered statistically significant.

## Results

### Patient characteristics

A total of 548 eligible patients with ESCC were identified at our institution during the study period of October 2002 to March 2007. The median age of the patients was 57 years (range: 30–82 years). The distribution of blood type was as follows: 164 patients (29.9%) with blood type A; 134 (24.5%) with blood type B; 202 (36.8%) with blood type O; and 48 (8.8%) with blood type AB. Of these, 349 (63.7%) patients were smokers, and 115 (21.0%) were drinkers. Table 1 summarizes the characteristics of the study population. Analysis with the  $\chi^2$  test showed that blood type was positively correlated with tumor location ( $P=0.004$ ), pN stage ( $P=0.001$ ), smoking ( $P=0.035$ ), and histologic grade ( $P=0.028$ ).

By analyzing the postoperative complications, 103 patients had postoperative complications, including 38 patients with pulmonary complications, 23 patients with anastomosis leakage, 17 patients with cardiac complications, 15 with wound infection, and 10 patients with other complications.

### Effect of ABO blood group on survival

The median follow-up time was 37 months (range: 6–131 months). Of the 548 enrolled patients, 331 had died, of whom 323 died of ESCC-related diseases, 3 of cardiovascular diseases, and 5 of other diseases. The 5-year OS for all patients was 43.3%. In the Kaplan–Meier analysis, blood type was associated with OS, the 5-year OS was 41.2%, 49.7%, 44.0%, and 29.8% for patients with the A, B, O, and AB blood type, respectively ( $P=0.038$ ; Table 2). For patients with negative LNs, univariate analysis showed that ABO blood group affected the prognosis of survival, with a 5-year OS of 59.0%, 68.2%, 57.9%, and 28.6% for patients with the A, B, O, and AB blood type, respectively ( $P<0.001$ ; Figure 1). In contrast, blood type had no value in predicting the prognosis of patients with positive LNs ( $P=0.524$ ; Table 2). Furthermore, when the prognostic impact of AB and non-AB types was compared, patients with type AB had a significantly poorer 5-year OS than did patients with a non-AB blood type (29.8% vs 44.6%,  $P=0.024$ ). Finally, among patients with LN-negative ESCC, the 5-year OS of those with AB and non-AB blood types was 14.3% and 61.2%, respectively ( $P<0.001$ ; Figure 2).

To determine whether ABO blood group could serve as an independent prognostic factor, we used Cox proportional

**Table 1** Correlation between ABO blood group and clinicopathological factors

Characteristic	All patients	Patient blood type				P
	n	A (%) (n=164)	B (%) (n=134)	O (%) (n=202)	AB (%) (n=48)	
Age (years)						
≤60	341	105 (64.0)	87 (64.9)	115 (56.9)	34 (70.2)	0.207
>60	207	59 (36.0)	47 (35.1)	87 (43.1)	14 (29.2)	
Sex						
Male	407	115 (70.1)	103 (76.9)	151 (74.8)	38 (79.2)	0.462
Female	141	49 (29.9)	31 (23.1)	51 (25.2)	10 (20.8)	
Tumor location						
Upper third	34	13 (7.9)	2 (1.5)	13 (6.4)	6 (12.5)	0.004
Middle third	234	82 (50.0)	54 (40.3)	84 (41.6)	14 (29.2)	
Lower third	280	69 (42.1)	78 (58.2)	105 (52.0)	28 (58.3)	
Tumor stage						
pT1	14	2 (1.2)	4 (3.0)	6 (3.0)	2 (4.2)	0.649
pT2	151	50 (30.5)	34 (25.4)	57 (28.2)	10 (20.8)	
pT3	383	112 (68.3)	96 (71.6)	139 (68.8)	36 (75.0)	
Node stage						
pN0	298	82 (50.0)	83 (61.9)	119 (58.9)	14 (29.2)	0.001
pN1	138	56 (34.1)	25 (18.7)	41 (20.3)	16 (33.3)	
pN2	88	22 (13.4)	21 (15.7)	31 (15.3)	14 (29.2)	
pN3	24	4 (2.5)	5 (3.7)	11 (5.5)	4 (8.3)	
Histological grade						
G1	101	32 (19.5)	28 (20.9)	35 (17.3)	6 (12.5)	0.028
G2	275	79 (48.2)	77 (57.5)	101 (50.0)	18 (37.5)	
G3	172	53 (32.3)	29 (21.6)	66 (32.7)	24 (50.0)	
Smoking						
Never	199	60 (36.6)	44 (32.8)	85 (42.1)	10 (20.8)	0.035
Ever	349	104 (63.4)	90 (67.2)	117 (57.9)	38 (79.2)	
Alcohol consumption						
No	433	130 (79.3)	108 (80.6)	160 (79.2)	35 (72.9)	0.732
Yes	115	34 (20.7)	26 (19.4)	42 (20.8)	13 (27.1)	

**Abbreviations:** G, grade; N, node; p, primary; T, tumor.

hazards models to examine OS. For all patients, blood type was not associated with survival in a univariate Cox regression analysis (hazard ratio [HR], 0.906; 95% confidence interval [CI], 0.812–1.011;  $P=0.078$ ). However, in a subgroup analysis of patients whose LNs were negative, the HR for OS among patients with blood type A, B, and O relative to those with type AB was 0.318 (95% CI, 0.166–0.609;  $P=0.001$ ), 0.226 (95% CI, 0.115–0.443;  $P<0.001$ ), and 0.319 (95% CI, 0.17–0.597;  $P<0.001$ ), respectively. No significant differences in OS were observed among patients with blood type A, B, and O. As with multivariate Cox regression analysis, ABO blood group was an independent prognostic factor of OS only for patients with negative LNs, with a higher risk of death for patients with type AB versus a non-AB type (HR, 2.576; 95% CI, 1.349–4.919;  $P=0.004$ ; Table 3). Other significant prognostic factors among all patients included sex, pN stage, histologic grade, and alcohol consumption.

## Discussion

In the present study, we investigated the value of ABO blood group in predicting the prognosis of patients who underwent radical surgery for ESCC. The results showed that blood type is an independent factor affecting the prognosis of patients with ESCC, especially for those without LN metastasis.

Many studies have examined the value of ABO blood group in predicting the risk of various solid tumors and hematologic malignancies.<sup>14–17</sup> It was found that the risk of EC increased significantly in patients with blood type B.<sup>8–10</sup> However, controversy still exists regarding the ability of ABO blood group to predict prognosis. Sun et al studied patients with ESCC who had a history of smoking and found that the B and O blood types were negatively associated with survival,<sup>11</sup> and Yang et al suggested that the survival of patients with blood type O was significantly poorer than that of patients with other blood types.<sup>12</sup> However, Nozoe et al found no correlation between ABO blood group

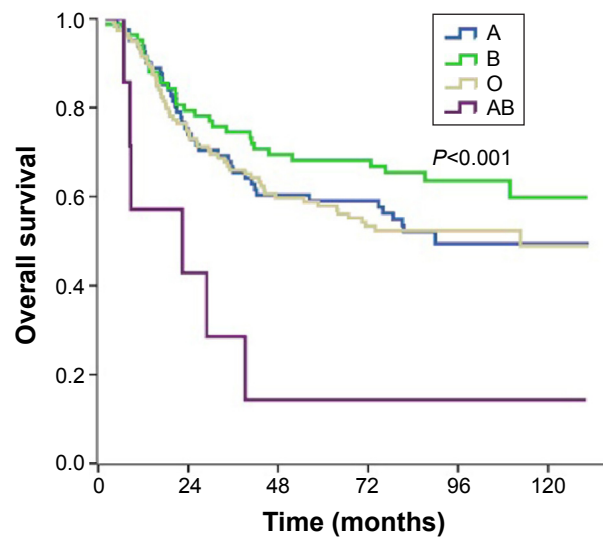
**Table 2** Univariate analysis of the association between prognosis and lymph node status in patients with esophageal cancer

Characteristic	All patients			Lymph node-negative			Lymph node-positive		
	5-year survival (%)	Median survival (months)	P	5-year survival (%)	Median survival (months)	P	5-year survival (%)	Median survival (months)	P
Age (years)									
≤60	44.1	40.8	0.326	60.2	—	0.315	25.8	21.1	0.105
>60	40.4	40.9		54.8	73.8		17.1	18.4	
Sex									
Male	39.9	36.0	0.006	57.5	109.8	0.398	21.0	21.6	0.019
Female	53.4	74.8		62.4	—		37.3	39.8	
Tumor location									
Upper third	36.6	35.2	0.758	45.9	58.7	0.188	23.3	21.0	0.905
Middle third	44.7	42.9		56.9	89.0		26.4	26.8	
Lower third	43.0	40.4		62.9	—		23.2	23.0	
Tumor stage									
pT1-T2	54.1	74.8	0.001	66.0	—	0.111	28.3	33.2	0.262
pT2	38.7	33.5		54.8	89.9		23.3	22.1	
Node stage									
pN0	59.0	—	<0.001	—	—	—	—	—	<0.001
pN1	31.3	34.6		—	—		31.1	34.6	
pN2	16.9	18.9		—	—		16.9	18.9	
pN3	9.2	7.2		—	—		9.2	7.2	
Histological grade									
G1	52.3	—	0.001	68.1	—	0.011	24.1	18.6	0.923
G2	45.1	46.6		60.6	—		22.7	27.2	
G3	35.1	26.8		46.8	44.2		26.4	21.6	
ABO blood group									
A	41.2	36.0	0.038	59.0	89.9	<0.001	23.3	21.6	0.524
B	49.7	51.8		68.2	—		18.9	24.9	
O	44.0	42.9		57.9	112.6		23.3	23.0	
AB	29.8	26.8		28.6	22.4		36.5	26.8	
Smoking									
Never	49.0	55.1	0.028	60.7	—	0.703	29.7	32.9	0.063
Ever	40.1	36.3		57.8	—		22.1	21.1	
Alcohol consumption									
No	47.3	47.3	<0.001	63.5	—	<0.001	27.8	26.8	0.001
Yes	28.7	29.7		42.5	41.6		11.8	15.9	

**Abbreviations:** G, grade; N, node; p, primary; T, tumor.

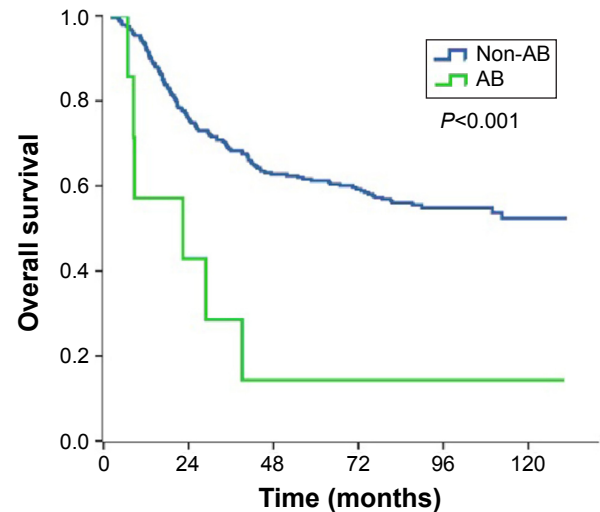
and prognosis.<sup>13</sup> Among the 548 patients in the present study, the proportions of blood types A, B, O, and AB were similar to those of the above-mentioned studies.<sup>15–17</sup> As a result, our study clarifies the prognostic value of ABO blood groups for survival among Chinese patients with ESCC. However, the results of the present study showed that the prognosis of patients with blood type AB was significantly poorer than that of patients with other blood types, especially in patients whose LNs were negative. A multivariate analysis determined that blood type AB is an independent factor affecting the survival of patients with ESCC. Though the distribution of blood groups with ESCC in the present study was similar to those of other studies, the reasons for the observed differences in results are unknown. The conflicting results could be due to the heterogeneity of study populations, differences in patient characteristics, or limited study sizes.

The prognosis of patients with ESCC and without LN metastases is known to be better than that of patients whose LNs are positive. Factors that negatively affect the prognosis of patients with LN-negative ESCC include age, depth of invasion, the length of the primary tumor, histologic grade, and behaviors such as smoking and drinking.<sup>18–20</sup> The multivariate analysis in the present study showed that alcohol consumption, histologic grade, and AB blood type had a negative impact on the prognoses of patients with negative LNs. The disparate results in patients with and without LN metastases might be due to the following potential reason: ESCC patients with positive LNs have a higher cancer load and the status of positive LNs themselves is a high risk factor for a poor prognosis. Among our patients with blood type AB had tumors that were primarily G3, which might imply that these patients' tumors had specific biological



**Figure 1** Overall survival of patients with lymph node-negative esophageal squamous cell carcinoma stratified by ABO blood group.

**Notes:** Kaplan–Meier analysis of overall survival (y-axis) overtime (x-axis) in patients with lymph node-negative esophageal squamous cell carcinoma. Survival was shortest among patients with type AB blood ( $P<0.001$ ).



**Figure 2** Overall survival of patients with lymph node-negative esophageal squamous cell carcinoma stratified by AB blood type.

**Notes:** Kaplan–Meier analysis of overall survival (y-axis) overtime (x-axis) in patients with lymph node-negative esophageal squamous cell carcinoma. Survival was longer among patients with A, B, or O blood types than among those with type AB ( $P<0.001$ ).

behaviors. Based on these data, we hypothesize that the genetic background associated with type AB blood might predispose ESCC to a poorer prognosis.

It remains uncertain why the ABO blood group antigens affect the survival of patients with EC. However, a growing number of studies have examined this issue, and the

possible mechanisms include inflammation, immunosurveillance of cancer cells, intracellular adhesion, and membrane signaling.<sup>21</sup> In addition, the expression of blood group antigens on cancer cells is modified by hypermethylation of the *ABO* promoter, and this hypermethylation might be related to tumor invasion and metastasis.<sup>22</sup>

**Table 3** Multivariate analysis of the association between prognosis and lymph node status in patients with esophageal cancer

Characteristic	All patients			Lymph node-negative		
	HR	95% CI	P	HR	95% CI	P
Sex						
Male	1			–		
Female	0.634	0.483–0.832	0.001	–	–	–
Tumor stage						
pT1-2	1			–		
pT3	1.227	0.951–1.583	0.116	–	–	–
Node stage						
pN0	1			–		
pN1	2.025	1.558–2.632	<0.001	–	–	–
pN2	3.262	2.449–4.344	<0.001	–	–	–
pN3	8.873	5.480–14.366	<0.001	–	–	–
Histological grade						
G1	1			1		
G2	1.222	0.884–1.688	0.225	1.545	0.951–2.508	0.079
G3	1.417	1.009–1.990	0.044	2.066	1.234–3.457	0.006
ABO blood group						
Non-AB	1			1		
AB	1.007	0.765–1.505	0.972	2.576	1.349–4.919	0.004
Smoking						
Never	1			–		
Ever	1.073	0.765–1.505	0.685	–	–	–
Alcohol consumption						
No	1			1		
Yes	1.620	1.264–2.076	<0.001	1.681	1.151–2.464	0.007

**Abbreviations:** CI, confidence interval; G, grade; HR, hazard ratio; N, node; p, primary; T, tumor.



The *ABO* gene is located on chromosome 9q34 and encodes glycosyltransferases,<sup>23</sup> which catalyze the step-by-step transfer of nucleotide donor sugars to the H antigen to form the A and B antigens.<sup>24</sup> Aberrant glycosylation represents a hallmark of cancer development and progression.<sup>25</sup> Thus, we hypothesize that patients with blood type AB are more susceptible to disease failure because their blood group antigens promote tumor cell invasion and the immune responses of ESCC cells. Further studies of the impact of blood type on tumor behavior or response to therapy could elucidate novel aspects of tumor biology and help guide individualized therapy for ESCC.

There are some limitations of the present study. First, this study is a single-center retrospective study and is not representative of the general population. Second, in order to avoid potential biases, patients enrolled in the present study were locoregional ESCC cases and underwent esophagectomy as curative treatment. Therefore, this study excluded patients with metastatic disease and those with unresectable ESCC. Thirdly, the detailed mechanism connecting the prognosis of ESCC patients and the ABO blood types remains unknown in the present study. Further explorations of the detailed mechanism may lead to the development of completely new cancer treatments.

In conclusion, the results of the present study show that ABO blood group is a prognostic factor for survival in patients with ESCC after esophagectomy. Patients with blood type AB had a significantly worse OS than patients with non-AB types, and this was especially in patients with negative LN. Our results should be verified by additional studies. Additionally, more research is needed to elucidate the association between ABO blood group and the genetic and biological features of ESCC.

## Acknowledgments

This work was supported by grants from the National Natural Science Foundation of China (No 81402527), the Sci-Tech Office of Guangdong Province (No 2013B021800157), and the Youth Foundation of Fujian Provincial Health and Family Planning Commission (No 2014-2-63).

## Disclosure

The authors report no conflicts of interest in this work.

## References

- Siegel R, Ma J, Zou Z, Jemal A. Cancer statistics, 2014. *CA Cancer J Clin*. 2014;64(1):9–29.
- Chen W, Zheng R, Zhang S, et al. The incidences and mortalities of major cancers in China, 2009. *Chin J Cancer*. 2013;32(3):106–112.
- Rice TW, Blackstone EH, Rusch VW. 7th edition of the AJCC cancer staging manual: esophagus and esophagogastric junction. *Ann Surg Oncol*. 2010;17(7):1721–1724.
- Rahbari NN, Bork U, Hinz U, et al. ABO blood group and prognosis in patients with pancreatic cancer. *BMC Cancer*. 2012;12:319.
- Cao X, Wen ZS, Sun YJ, Li Y, Zhang L, Han YJ. Prognostic value of ABO blood group in patients with surgically resected colon cancer. *Br J Cancer*. 2014;111(1):174–180.
- Ouyang PY, Su Z, Mao YP, Liu Q, Xie FY. Prognostic value of ABO blood group in southern Chinese patients with established nasopharyngeal carcinoma. *Br J Cancer*. 2013;109(9):2462–2466.
- Cihan YB. Significance of ABO-Rh blood groups in response and prognosis in breast cancer patients treated with radiotherapy and chemotherapy. *Asian Pac J Cancer Prev*. 2014;15(9):4055–4060.
- Su M, Lu SM, Tian DP, et al. Relationship between ABO blood groups and carcinoma of esophagus and cardia in Chaoshan inhabitants of China. *World J Gastroenterol*. 2001;7(5):657–661.
- Gong Y, Yang YS, Zhang XM, et al. ABO blood type, diabetes and risk of gastrointestinal cancer in northern China. *World J Gastroenterol*. 2012;18(6):563–569.
- Kumar N, Kapoor A, Kalwar A, et al. Allele frequency of ABO blood group antigen and the risk of esophageal cancer. *Biomed Res Int*. 2014;2014:286810.
- Sun P, Chen C, Zhang F, et al. The ABO blood group predicts survival in esophageal squamous cell carcinoma in patients who ever smoked: a retrospective study from China. *Tumour Biol*. 2014;35(7):7201–7208.
- Yang X, Huang Y, Feng JF. Is there an association between ABO blood group and overall survival in patients with esophageal squamous cell carcinoma? *Int J Clin Exp Med*. 2014;7(8):2214–2218.
- Nozoe T, Ezaki T, Baba H, Kakeji Y, Maehara Y. Correlation of ABO blood group with clinicopathologic characteristics of patients with esophageal squamous cell carcinoma. *Dis Esophagus*. 2004;17(2):146–149.
- Gates MA, Wolpin BM, Cramer DW, Hankinson SE, Tworoger SS. ABO blood group and incidence of epithelial ovarian cancer. *Int J Cancer*. 2011;128(2):482–486.
- Wolpin BM, Chan AT, Hartge P, et al. ABO blood group and the risk of pancreatic cancer. *J Natl Cancer Inst*. 2009;101(6):424–431.
- Ben Q, Wang K, Yuan Y, Li Z. Pancreatic cancer incidence and outcome in relation to ABO blood groups among Han Chinese patients: a case-control study. *Int J Cancer*. 2011;128(5):1179–1186.
- Pandey M, Gautam A, Shukla VK. ABO and Rh blood groups in patients with cholelithiasis and carcinoma of the gall bladder. *BMJ*. 1995;310:1639.
- Tachibana M, Kinugasa S, Dhar DK, et al. Prognostic factors in node-negative squamous cell carcinoma of the thoracic esophagus. *Int J Surg Investig*. 2000;1(5):389–395.
- Lin Y, Su X, Su H, et al. Prediagnostic smoking and postoperative survival in lymph node-negative esophagus squamous cell carcinoma patients. *Cancer Sci*. 2012;103(11):1985–1988.
- Song Z, Wang J, Lin B, Zhang Y. Analysis of the tumor length and other prognosis factors in pT1-2 node-negative esophageal squamous cell carcinoma in a Chinese population. *World J Surg Oncol*. 2012;10:273.
- Melzer D, Perry JR, Hernandez D, et al. A genome-wide association study identifies protein quantitative trait loci (pQTLs). *PLoS Genet*. 2008;4(5):e1000072.
- Gao S, Worm J, Guldborg P, et al. Genetic and epigenetic alterations of the blood group ABO gene in oral squamous cell carcinoma. *Br J Cancer*. 1996;73(4):420–423.
- Devlin J, Elder PA, Gabra H, Steel CM, Knowles MA. High frequency of chromosome 9 deletion in ovarian cancer: evidence for three tumour-suppressor loci. *Int J Cancer*. 2004;109(2):230–237.
- Yazer MH. What a difference 2 nucleotides make: a short review of ABO genetics. *Transfus Med Rev*. 2005;19(3):200–209.
- Hakomori S. Glycosylation defining cancer malignancy: new wine in an old bottle. *Proc Natl Acad Sci U S A*. 2002;99(16):10231–10233.

**OncoTargets and Therapy****Publish your work in this journal**

OncoTargets and Therapy is an international, peer-reviewed, open access journal focusing on the pathological basis of all cancers, potential targets for therapy and treatment protocols employed to improve the management of cancer patients. The journal also focuses on the impact of management programs and new therapeutic agents and protocols on

Submit your manuscript here: <http://www.dovepress.com/oncotargets-and-therapy-journal>

patient perspectives such as quality of life, adherence and satisfaction. The manuscript management system is completely online and includes a very quick and fair peer-review system, which is all easy to use. Visit <http://www.dovepress.com/testimonials.php> to read real quotes from published authors.

**Dovepress**