

Regular inhaled corticosteroids in adult-onset asthma and the risk for future cancer: a population-based cohort study with proper person-time analysis

Victor C Kok^{1,2}

Jorng-Tzong Horng^{2,3}

Hsu-Kai Huang³

Tsung-Ming Chao⁴

Ya-Fang Hong⁵

¹Division of Medical Oncology, Department of Internal Medicine, Kuang Tien General Hospital, Taichung, Taiwan; ²Department of Biomedical Informatics, Asia University Taiwan, Taichung, Taiwan; ³Department of Computer Science and Information Engineering, National Central University, Jhongli, Taiwan; ⁴Statistics Unit, Department of Applied Geomatics, Chien Hsin University, Jhongli, Taiwan; ⁵Institute of Molecular Biology, Academia Sinica, Nankang, Taipei, Taiwan

Background: Recent studies have shown that inhaled corticosteroids (ICS) can exert anti-inflammatory effects for chronic airway diseases, and several observational studies suggest that they play a role as cancer chemopreventive agents, particularly against lung cancer. We aimed to examine whether regular ICS use was associated with a reduced risk for future malignancy in patients with newly diagnosed adult-onset asthma.

Methods: We used a population-based cohort study between 2001 and 2008 with appropriate person-time analysis. Participants were followed up until the first incident of cancer, death, or to the end of 2008. The Cox model was used to derive an adjusted hazard ratio (aHR) for cancer development. Kaplan–Meier cancer-free survival curves of two groups were compared.

Results: The exposed group of 2,117 regular ICS users and the nonexposed group of 17,732 non-ICS users were assembled. After 7,365 (mean, 3.5 years; standard deviation 2.1) and 73,789 (mean, 4.1 years; standard deviation 2.4) person-years of follow-up for the ICS users and the comparator group of non-ICS users, respectively, the aHR for overall cancer was nonsignificantly elevated at 1.33 with 95% confidence interval (CI), 1.00–1.76, $P=0.0501$. The Kaplan–Meier curves for overall cancer-free proportions of both groups were not significant (log-rank, $P=0.065$). Synergistic interaction of concurrent presence of regular ICS use was conducted using “ICS-negative and chronic obstructive pulmonary disease (COPD)-negative” as the reference. The aHR for the group of “ICS-positive, COPD-negative” did not reach statistically significant levels with aHR at 1.38 (95% CI, 0.53–3.56). There was a statistically significant synergistic interaction of concurrent presence of regular ICS use and COPD with aHR at 3.78 (95% CI, 2.10–6.81).

Conclusion: The protective effect of regular ICS use in the studied East Asian patients with adult-onset asthma was not detectable, contrary to reports of previous studies that ICS might prevent the occurrence of future cancer.

Keywords: immortal time bias, NHIRD, population-based study, retrospective cohort study, risk of cancer

Correspondence: Victor C Kok
Kuang Tien General Hospital, 117 Shatien Road, Shalu, Taichung 43303, Taiwan
Tel +886 919 524 909
Email victorkok@asia.edu.tw

Jorng-Tzong Horng
National Central University, 300 Jhongda Road, Jhongli, Taoyuan 32001, Taiwan
Tel +886 919 057 555
Email horng@db.csie.ncu.edu.tw

Background

Inhaled corticosteroids (ICS) are regarded as the most effective topical anti-inflammatory drugs for treating chronic airway diseases, including asthma and chronic obstructive pulmonary disease (COPD). The mechanism of action of ICS is mainly attributed to their anti-inflammatory effects exerted on the bronchial lining cells. It has been demonstrated that ICS can exert their beneficial anti-inflammatory effects by inhibiting the synthesis of leukotriene C4 and prostaglandin D2 in the airway, reducing serum

surfactant protein D level, and significantly decreasing the proinflammatory bacterial lipopolysaccharide-induced interleukins (IL) such as IL-1 beta, IL-6, and IL-8, as well as tissue necrotic factor-alpha secretion.¹⁻⁴

The initial suggestion for the property of cancer prevention by ICS came from an animal study that demonstrated that in female A/J mice, ICS could inhibit the formation of pulmonary adenomas.⁵ Subsequently, a small, randomized, placebo-controlled, Phase IIb clinical study suggested that inhaled budesonide decreases the proportion of lung nodules in smokers with bronchial dysplasia as detected by spiral computerized tomography ($P=0.024$);⁶ a second randomized, placebo-controlled, Phase IIb clinical study showed a trend toward regression of ground glass opacities.^{6,7}

The cancer prevention property of ICS has been addressed in COPD populations in the following three clinical studies. A population-based cohort study on ICS for COPD revealed that there was a dose-dependent decreased risk of lung cancer associated with ICS (ICS dose $<1,200$ $\mu\text{g/day}$, the adjusted hazard ratio [aHR] was 1.3 with 95% confidence interval [CI], 0.67–1.90; whereas, when ICS dose $\geq 1,200$ $\mu\text{g/day}$, aHR was 0.39 with 95% CI, 0.16–0.96).⁸ In a population-based nested case-control study among COPD patients who had quit smoking, the multivariate aHR for lung cancer development was 0.64 (95% CI, 0.42–0.98) in ICS users compared with short-acting bronchodilator users; moreover, a dose-responsive relationship was observed.⁹ In a proof-of-concept randomized controlled study in a COPD cohort of 36 patients evaluating markers in epithelial–mesenchymal transition (EMT) in large airway samples, the active treatment arm with ICS had statistically significantly regressed some EMT biomarkers.¹⁰ This pilot study provided suggestive support for an anti-EMT effect of ICS in the large airways in patients with COPD.

Likewise, there are at least two observational studies that assessed cancer prevention by ICS in asthmatic populations in literature. A population-based nested case-control study in adult Korean patients with ICS disclosed that the adjusted odds ratio (OR) for lung cancer was 0.79 with 95% CI, 0.69–0.90, whereas there was no statistically significant association of the risk for laryngeal cancer.¹¹ It should be noted that nearly 58% of the lung cancer cases included in this Korean study had COPD.

A substudy to assess the association of ICS use and future cancer death in female COPD-free asthmatics ($n=2,671$) in the Nurses' Health Study, a longitudinal observational study in the United States, demonstrated no decrease in the number of cancer deaths among ICS users (OR =0.66; 95%

CI, 0.32–1.38).¹² The ORs for cancer death were adjusted for age, smoking, severity of asthma, heart disease, stroke, and medication, including aspirin and statin. The OR for death from cancer would have been significantly reduced if ICS use was associated with a significant reduction of lung cancer cases because lung cancer patients typically have a high mortality rate.

Adult-onset asthma differs from asthma originating from childhood in several respects. Adult-onset asthma mainly affects women and it is nonatopic. Patients with adult-onset asthma have a more severe disease, and tend to associate with a faster decline in lung function.^{13,14} Therefore, regular ICS use is mostly required in this group of patients.

We thus wanted to use a population-based retrospective cohort study design to examine whether regular use of ICS would offer beneficial effects in terms of a reduced risk for future occurrence of cancers, particularly lung cancer, in patients with adult-onset asthma. Unlike a nested case-control study design that is suitable for overcoming the time-varying nature of treatment, we approached this issue using a cohort study design with the proper person-time approach.¹⁵⁻¹⁹

Materials and methods

Data source

This study to examine the hypothesis that regular ICS use in patients with adult-onset asthma provides protective effects from future cancer development used a population-based retrospective cohort design with selected datasets derived from the National Health Insurance Research Database (NHIRD) provided to scientists in Taiwan for research purposes. The National Health Insurance program of Taiwan was established in 1995. As of 2007, more than 98% of the residents in Taiwan are enrolled into this single-payer program.

Combining data from the registration files and original claim data in the NHIRD, specific data subsets were constructed by the experts of the NHIRD for research purposes. This study utilized the Longitudinal Health Insurance Dataset 2000, which consists of one million randomly selected enrollees sampled from the Registry for Beneficiaries in the year 2000. This dataset was checked against the original NHIRD for accurate representation to confirm that there was no significant difference in the distribution of sex (chi-square =1.74, degrees of freedom =1, $P=0.187$) between individuals in the Longitudinal Health Insurance Dataset 2000 and the mother database, NHIRD.²⁰ The authors have previously performed several population-based cohort studies using data or datasets from the NHIRD.²¹⁻²³

This study was conducted after approval by the Kuang Tien General Hospital Institutional Review Board with a

Certificate of Approval, numbered IRB-10323. Written informed consent was not obtained because patient records were anonymized and de-identified prior to analysis.

Study cohorts

The target population for this research was ambulatory patients with asthma who were available to participate from 2001 to 2008. The inclusion criteria were adult patients with a new International Classification of Diseases, Ninth Edition, with Clinical Modification (ICD-9-CM) diagnosis of asthma (493.xx) in the period from January 1, 2001 to December 31, 2008, with medical claims at least three times a year. The first claim of asthma was the index date. Exclusion criteria included missing data (null value), age less than 20, presence of asthma before 2001, ICS use before the diagnosis of asthma, fewer than three claims per annum for asthma encounters, and prevalent cancer before the index date. A period of at least 1 year before the index date was used to rule out exclusion criteria.

The study cohort consisted of regular ICS users. The patients identified as regular ICS users were those with an average of six or more prescriptions of ICS per year after the index date. The day of the first prescription of ICS was the index date. The immune time before the use of ICS was reallocated to the non-ICS group to overcome the immune (immortal) time bias. The remainder of the patients with adult-onset asthma, who received no ICS treatment throughout the follow-up period, were assembled as the comparator cohort (non-ICS user cohort). Studied patients could not cross over between groups once allocation to either ICS users group or non-ICS users group was determined (Figure 1).

Collection of data on comorbidities and treatment

Basic demographic data such as age, sex, and smoking-related diagnosis as a surrogate for cigarette-smoking history were collected using ICD-9-CM codes 305.1, 491.0, 491.2, 492.8, 496, 523.6, 649.0, 989.84, and V15.82. The confounding medical comorbidities included in the study were allergic rhinitis, atopic dermatitis, rhinosinusitis, COPD, diabetes mellitus (DM), depression, gastroesophageal reflux disease (GERD), osteoporosis, hypertension, heart failure, dyslipidemia, arrhythmia, and ischemic heart disease, each of which has its own corresponding ICD-9-CM code/codes. In addition, the Charlson comorbidity index (CCI) was calculated for each patient in both groups. Baseline characteristics (comorbidities) for non-ICS users were looked for and determined in the preceding 1 year pre-index period.

The pre-index period used to define baseline characteristics for regular ICS users was the preceding 1 year before the initiation of ICS prescription. We excluded diabetes, myocardial infarction, and congestive heart failure from the CCI score calculation because these diseases/conditions were preplanned collected comorbidities. The CCI score from zero to above five can provide information on the severity of concurrent illnesses in a patient.

Three types of ICS were available in the region in the study period: beclomethasone dipropionate, budesonide, and fluticasone propionate. An average daily dose of an ICS as an equivalent dose of triamcinolone acetonide, based upon the estimated equipotent therapeutic index of the ICS for adults, was calculated by dividing the total number of micrograms by the number of days prescribed during the follow-up period.²⁴ Other asthmatic medications included for analyses in this study were long-acting bronchodilators, short-acting bronchodilators, leukotriene receptor antagonists, theophylline, and oral corticosteroids.

Study end-points, outcome measures, and follow-up

Both groups of patients were followed up until the development of the first malignancy, death, or the end of the year in 2008, whichever came first. The outcome measure was the adjusted risk of incident malignancy using a multivariate hazard ratio in the Cox model. The cancers looked at in this cohort study were oral, lung, esophageal, gastric, urinary bladder, prostatic, colorectal, hepatic, non-melanocytic skin, nasopharyngeal, and female breast cancers.

Statistical analyses

Person-year values were all calculated with the proper person-time approach to overcome the immortal time bias. An incidence rate ratio (IRR) (the ratio of two incidence rates for cancer development) comparing the exposed and nonexposed groups with person-time denominators along with a 95% CI was constructed by Poisson distribution and test-based methods. The Kaplan–Meier model was used to estimate various cancer-free proportions of ICS regular users and non-ICS users, and the log-rank test was carried out to compare the two curves. The two-sided alpha level of 0.05 was adopted. A Cox proportional hazards regression model was constructed to control for sex, age group, CCI group, all comorbidities mentioned earlier, smoking-related diagnoses, and all other asthma medications. Sensitivity analysis was conducted using a synergy index, calculated as:

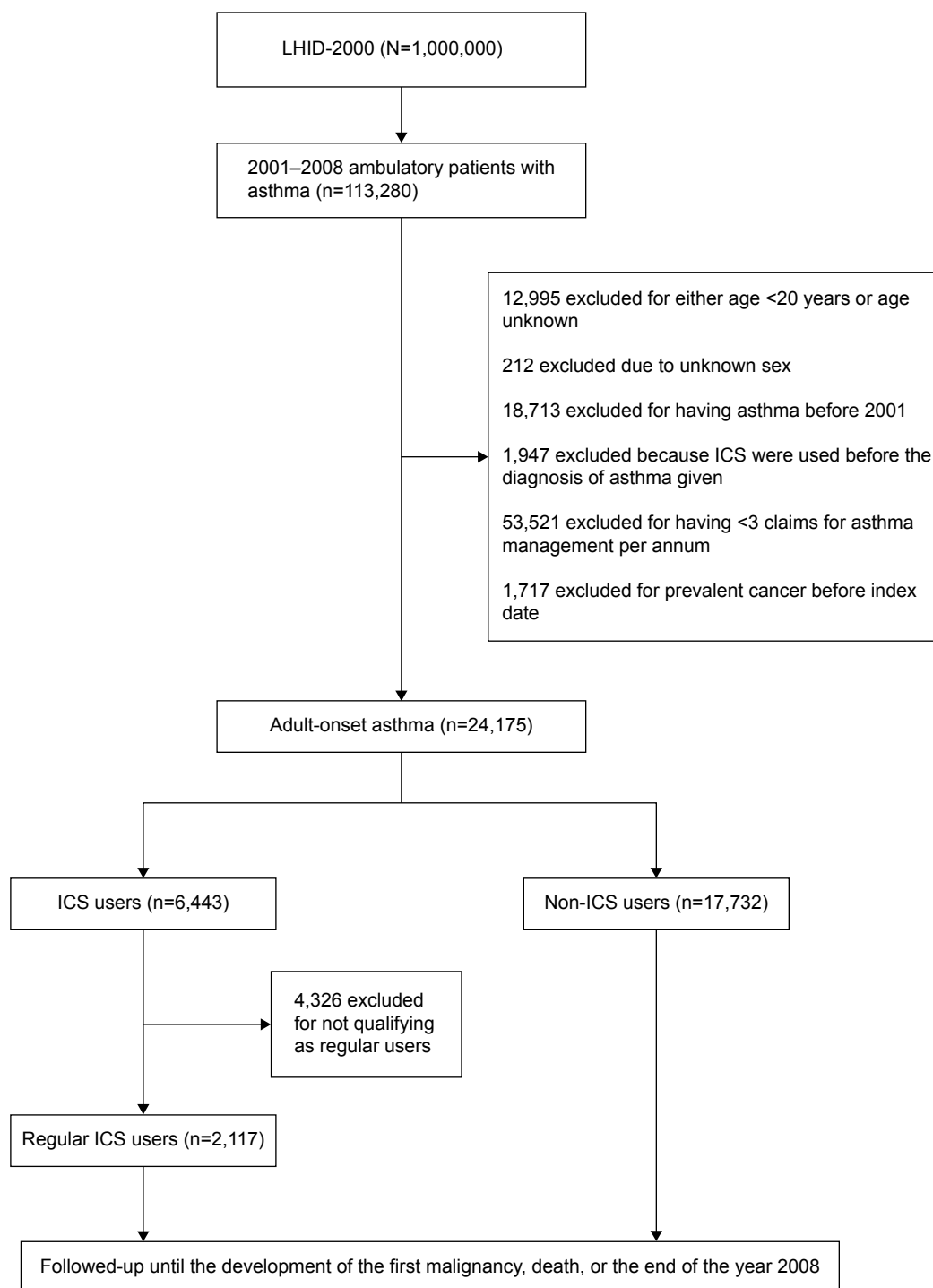


Figure 1 The study flow diagram showing the study design using a population-based retrospective cohort study and the assembling of the ICS cohort and the comparator non-ICS use cohort.

Abbreviations: ICS, inhaled corticosteroids; LHID, Longitudinal Health Insurance Database.

$$(HR_{AB} - 1) / (HR_A + HR_B - 2) \quad (1)$$

with HR_A and HR_B representing hazard ratios for two dichotomous factors, A and B, respectively, and HR_{AB} representing the hazard ratio for future cancer development if factors

A and B are present; when the synergy index is larger than 1, a synergistic interaction exists. The CI estimation of the interaction is estimated according to Hosmer and Lemeshow's method.²⁵ We used SAS statistical software version 9.2 for the statistical analyses.

Results and discussion

The entire cohort of 24,175 cancer-free individuals with newly diagnosed adult-onset asthma from 2001 to 2008 was studied. The exposed group consisting of 2,117 regular users of ICS and the non-exposed comparator group of 17,732 non-ICS users were assembled from the cohort (Figure 1). After 7,365 person-years of follow-up (mean, 3.5 years; standard deviation 2.1), 130 incident cancers had occurred for the ICS users. In comparison, 1,064 incident cancers had occurred in the comparator group of non-ICS users after 73,789 person-years' follow-up (mean, 4.1 years; standard deviation 2.4).

The mean age of the patients in both groups was similar at approximately 53 years. There were more women than men with 50.31% females among the regular ICS users group and 54.27% in the non-ICS users group. Sixty-three percent and 43% were cigarette smokers in the ICS users group and non-ICS users group, respectively (Table 1).

DM (approximately 18%), hypertension (40%), dyslipidemia (14%), and coronary heart disease (23%) were similar in both groups of patients. The proportion of depression was less than 2%, and that of osteoporosis approximately 3%; these were also quite similar between both groups. However, the regular ICS users group had higher proportions of allergic rhinitis (53% versus 35%) and COPD (58% versus 40%) (Table 1).

The unadjusted IRR for future cancer occurrence was significantly elevated in all regular ICS users as a whole with the IRR at 1.22 (95% CI, 1.02–1.47). In addition, IRR statistically increased in the age group of 60–79 years (IRR 1.27, 95% CI, 1.00–1.61); the group of patients with CCI score 1 or 2 (IRR 1.36, 95% CI, 1.06–1.75); patients without atopic dermatitis (IRR 1.21, 95% CI, 1.00–1.46); patients with COPD (IRR 1.35, 95% CI, 1.09–1.67); patients without DM (IRR 1.24, 95% CI, 1.01–1.52); patients with depression (IRR 4.36, 95% CI, 1.55–12.20); patients without GERD (IRR 1.22, 95% CI, 1.02–1.47); patients without osteoporosis (IRR 1.22, 95% CI, 1.01–1.47); patients with heart failure (IRR 1.91, 95% CI, 1.23–2.94); patients with dyslipidemia (IRR 1.67, 95% CI, 1.10–2.52); patients without rhinosinusitis (IRR 1.21, 95% CI, 1.00–1.46); patients with cardiac arrhythmia (IRR 1.81, 95% CI, 1.26–2.62); patients with coronary heart disease (IRR 1.69, 95% CI, 1.27–2.26); patients who took theophylline (IRR 1.43, 95% CI, 1.15–1.78); and patients with smoking-related diagnoses (IRR 1.34, 95% CI, 1.04–1.71) (Table S1).

After controlling the differences in sex, age group, CCI score, all comorbidities, smoking-related diagnoses, and all

Table 1 Baseline characteristics and follow-up data for both groups of adult-onset asthmatics receiving ICS regularly or without the ICS use

	Regular ICS users	Non-ICS users
Adult-onset asthmatics	2,117	17,732
Age (years), mean (SD)	52.8 (17.6)	53.3 (18.2)
Age group		
20–39	564 (26.64)	4,634 (26.13)
40–59	734 (34.67)	6,060 (34.18)
60–79	710 (33.54)	5,711 (32.21)
≥80	109 (5.15)	1,327 (7.48)
Sex		
Man	1,052 (49.69)	8,108 (45.73)
Woman	1,065 (50.31)	9,624 (54.27)
Smoking-related diagnoses*	1,324 (62.54)	7,566 (42.67)
Comorbidities		
Allergic rhinitis	1,131 (53.42)	6,221 (35.08)
Atopic dermatitis	144 (6.80)	1,041 (5.87)
Rhinosinusitis	146 (6.90)	802 (4.52)
COPD	1,230 (58.10)	7,047 (39.74)
DM	377 (17.81)	3,324 (18.75)
Depression	34 (1.61)	312 (1.76)
GERD	32 (1.51)	89 (0.50)
Osteoporosis	72 (3.40)	573 (3.23)
Hypertension	881 (41.62)	7,061 (39.82)
Heart failure	209 (9.87)	1,353 (7.63)
Dyslipidemia	311 (14.69)	2,514 (14.18)
Arrhythmia	308 (14.55)	2,279 (12.85)
CHD	488 (23.05)	3,983 (22.46)
CCI score, mean (SD)	0.93 (1.20)	0.98 (1.25)
CCI group		
CCI score 0	992 (46.86)	829 (46.76)
CCI score 1, 2	919 (43.41)	7,462 (42.08)
CCI score 3, 4	177 (8.36)	1,608 (9.07)
CCI score ≥5	29 (1.37)	371 (2.09)
Type of ICS		
Beclomethasone dipropionate	144 (6.80)	NA
Budesonide	1,298 (61.31)	NA
Fluticasone propionate	1,070 (50.54)	NA
Other asthma medication		
LABA	1,369 (64.67)	10 (0.06)
SABA	284 (13.42)	355 (2.00)
LTRA	285 (13.46)	239 (1.35)
Theophylline	1,243 (58.72)	7,945 (44.81)
OCS	421 (19.89)	2,031 (11.45)
Follow-up (years), mean (SD)	3.5 (2.1)	4.1 (2.4)
Follow-up duration (years)		
≤1	320 (15.12)	2,303 (12.99)
1–3	630 (29.76)	4,291 (24.20)
3–5	604 (28.53)	4,252 (23.98)
5–7	429 (20.26)	4,261 (24.03)
≥7	134 (6.33)	2,625 (14.80)

Notes: Values listed as number (%) unless otherwise stated. *Included all cases of COPD.

Abbreviations: CCI, Charlson comorbidity index; CHD, coronary heart disease; COPD, chronic obstructive pulmonary disease; DM, diabetes mellitus; GERD, gastroesophageal reflux disease; ICS, inhaled corticosteroids; LABA, long-acting inhaled beta-agonist; LTRA, leukotriene receptor antagonist; NA, not applicable; OCS, oral corticosteroid; SABA, short-acting beta-agonist; SD, standard deviation.

Table 2 Number of incident malignancies in each cohort and the adjusted hazard ratios with their 95% confidence interval for specific sites of cancer associated with regular ICS treatments using non-ICS users as the reference

Cancer site	ICS users	Non-ICS users	Adjusted HR (95% CI)*	P-value
Person-years [‡]	7,364.96	73,788.86		
Overall	130	1,064	1.33 (1.00–1.76)	0.0501
Oral	7	43	2.64 (0.92–7.62)	0.0717
Lung	36	200	2.23 (1.31–3.79)	0.0031
Esophagus	0	22	–	–
Stomach	2	47	0.08 (0.01–2.86)	0.1670
Urinary bladder	5	28	1.03 (0.14–7.41)	0.9806
Prostate	9	52	1.98 (0.70–5.57)	0.1967
Colorectal	23	168	1.31 (0.65–2.64)	0.4569
Liver	11	141	0.89 (0.33–2.37)	0.8141
Skin, NMSC	5	25	0.18 (0.01–7.55)	0.3703
Nasopharynx	2	22	1.99 (0.45–8.85)	0.3649
Female breast	8	46	1.88 (0.58–6.07)	0.2899

Notes: *Adjusted using the Cox model for sex, age group, Charlson comorbidity index group, all comorbidities, smoking-related diagnoses, and all other asthma medications. Person-year values were all calculated with the proper person-time approach avoiding the immortal time bias. [‡]For female breast cancer, the respective person-years was 3,695.45 for the ICS users and 40,295.94 for non-ICS users. Bold type indicates statistical significance.

Abbreviations: CI, confidence interval; HR, hazard ratio; ICS, inhaled corticosteroids; NMSC, non-melanocytic skin cancer.

asthma medications other than ICS in the Cox proportional hazards regression model on the risk of cancer development using non-ICS users as the reference, the aHR for overall cancer was statistically nonsignificant at 1.33 with 95% CI, 1.00–1.76, $P=0.0501$ (Table 2). The Kaplan–Meier model for estimating the overall cancer-free proportions were not significant with the log-rank test $P=0.065$ (Figure 2A). Likewise, the risk in terms of aHRs were nonsignificant in oral (aHR =2.64, 95% CI, 0.92–7.62), esophageal, gastric (aHR =0.08, 95% CI, 0.01–2.86), urinary bladder (aHR =1.03, 95% CI, 0.14–7.41), prostatic (aHR =1.98, 95% CI, 0.70–5.57), colorectal (aHR =1.31, 95% CI, 0.65–2.64), liver (aHR =0.89, 95% CI, 0.33–2.37), non-melanocytic skin (aHR =0.18, 95% CI, 0.01–7.55), nasopharyngeal (aHR =1.99, 95% CI, 0.45–8.85), and female breast cancers (aHR =1.88, 95% CI, 0.58–6.07) (Table 2). Nevertheless, the aHR for lung cancer was elevated at 2.23 (95% CI, 1.31–3.79) in an ICS individual as compared with non-ICS users. Figure 2B shows that the Kaplan–Meier curves of lung cancer-specific cancer-free proportions in ICS regular users versus non-ICS users were statistically significantly different under the log-rank test with $P=0.0035$. An ICS dose-responsive relationship was examined by separating patients into two groups by the daily ICS dose at a cut-off of 1,500 µg/day and 2,000 µg/day, respectively. Both analyses showed no statistical significance when comparing ICS doses below or above these cut-offs (Figure 2C and D).

Sensitivity analysis

Because 58.1% and 63% of the regular ICS users had COPD and smoking-related diagnoses, respectively, and these figures

were obviously higher than those of non-ICS users, we decided to examine the synergistic interactions between the state of having regular ICS use and the presence of COPD comorbidity. Using ICS-negative and COPD-negative as the reference, the aHR for the group of regular ICS users who did not have COPD (ICS-positive, COPD-negative) did not reach statistically significant levels with aHR at 1.38 (95% CI, 0.53–3.56). Nevertheless, there was a statistically significant synergistic interaction of the concurrent presence of regular ICS use and COPD with aHR at 3.78 (95% CI, 2.10–6.81) (Table 3).

Discussion

Using a population-based cohort study design with proper person-time analysis to investigate whether the anti-inflammatory effects of ICS might reduce the risk for future cancer, particularly in the lungs, the results of our study revealed no beneficial association between regular ICS use for adult-onset asthma and future malignancy development. The exposed group had 2,117 patients and the comparator group almost 18,000 patients. These are cohorts large enough for cancer epidemiological assessment. In addition to sex and age, the Cox model also controls for the CCI, smoking-related diagnostic group as a surrogate for the status of cigarette smoking, atopic dermatitis, COPD, DM, depression, GERD, dyslipidemia, other medical comorbidities, and asthma medications other than ICS such as long-acting bronchodilators, short-acting bronchodilators, leukotriene receptor antagonists, theophylline, and oral steroids.

The immortal time bias was avoided by the preplanned proper person-time approach to reallocate the “immortal

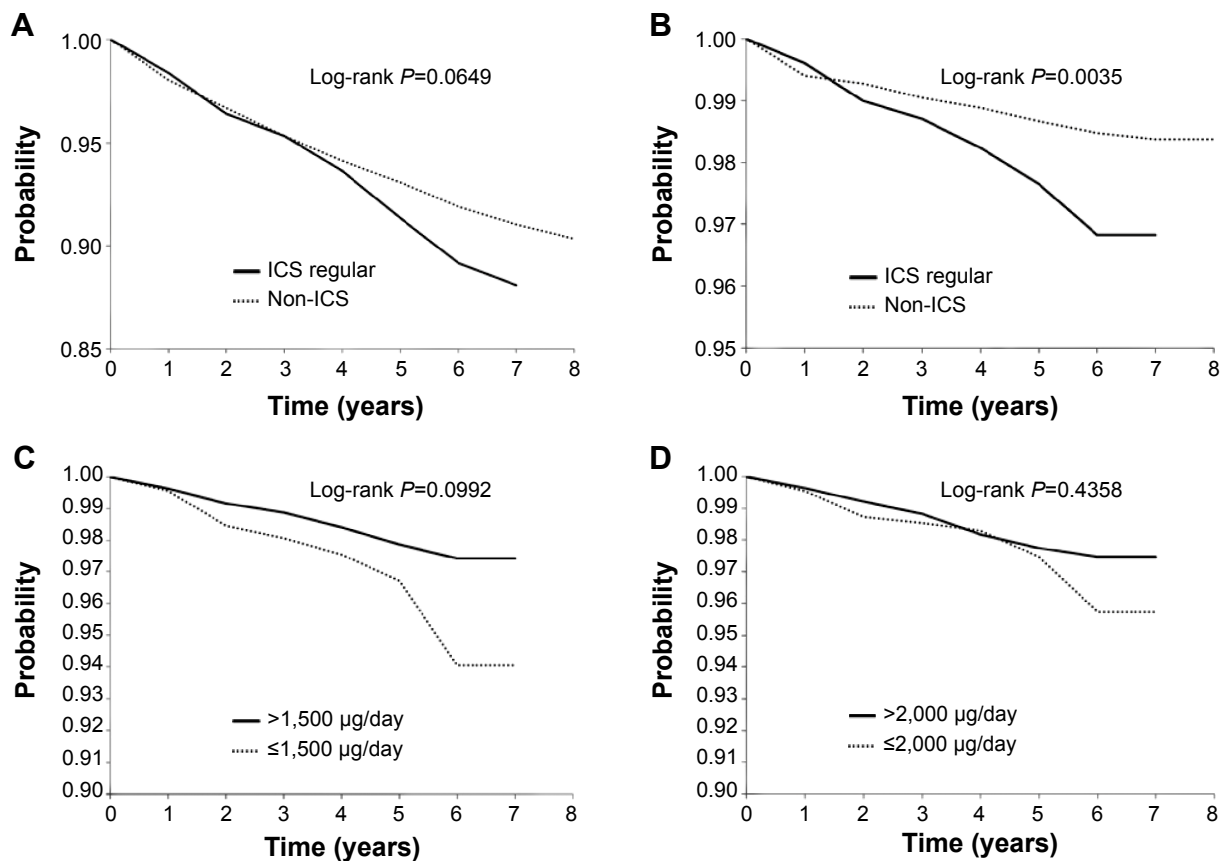


Figure 2 Comparison of either overall cancer or lung cancer-specific Kaplan–Meier survival curves between ICS users and non-users or using different cut-offs of the ICS dosage.

Notes: (A) Kaplan–Meier model for estimating the overall cancer-free proportions of ICS regular users and non-ICS users with the proper person-time approach. (B) Kaplan–Meier model for estimating the lung cancer-specific cancer-free proportions in ICS regular users versus non-ICS users with the proper person-time approach. (C) Kaplan–Meier model for estimating the lung cancer-free proportions by ICS dosage at 1,500 µg per day among ICS regular users with the proper person-time approach. (D) Kaplan–Meier model for estimating the lung cancer-free proportions by ICS dosage at 2,000 µg per day among ICS regular users with the proper person-time approach.

Abbreviation: ICS, inhaled corticosteroids.

time” before starting an ICS in the exposed group to the non-exposed group. There is no potential for selection bias because in this study, a patient with adult-onset asthma who was prescribed an ICS remained during the entire follow-up duration in the exposed group. In other words, no cross-over between the studied groups was allowed. Recall bias, commonly present in cohort studies adopting patient self-reported

asthma, was not present in this study. This study applied very strict criteria of case ascertainment that excluded patients having less than three claims for asthma management per year before the study group was assembled.

A recent study by South Korean colleagues using a population-based nested case-control study design showed that there was a protective effect against lung cancer but not

Table 3 Synergistic interactions between ICS regular use and COPD comorbidity on the risk of lung cancer development in patients with adult-onset asthma

	Crude HR (95% CI)	SI (95% CI)	Adjusted HR (95% CI)	SI (95% CI)
ICS (–ive), COPD (–ive)	1.00	2.88 (1.003–8.24)	1.00	3.88 (0.75–20.13)
ICS (+ive), COPD (–ive)	0.79 (0.32–1.94)		1.38 (0.53–3.56)	
ICS (–ive), COPD (+ive)	2.14 (1.62–2.83)*		1.44 (1.08–1.92)*	
ICS (+ive), COPD (+ive)	3.67 (2.43–5.53)*		3.78 (2.10–6.81)*	

Notes: * $P < 0.05$. The hazard ratios were adjusted for Charlson comorbidity index, allergic rhinitis, atopic dermatitis, rhinosinusitis, diabetes mellitus, depression, gastroesophageal reflux disease, osteoporosis, hypertension, heart failure, dyslipidemia, arrhythmia, and ischemic heart disease. Synergy index is calculated as $(HR_A + HR_B - 1) / (HR_A + HR_B - 2)$; when the synergy index is larger than 1, a synergistic interaction exists.²⁵

Abbreviations: –ive, negative; +ive, positive; CI, confidence interval; COPD, chronic obstructive pulmonary disease; HR, hazard ratio; ICS, inhaled corticosteroids; SI, synergy index.

laryngeal cancer with ICS use versus non-use with an adjusted OR at 0.86 (95% CI, 0.8–0.93).¹¹ The main differences between their study and ours were (aside from the difference in the study design) different target population (adult users of ICS in the Korean study were not limited to those with adult-onset asthma) and having no smoking-related diagnoses, DM, depression, and other medical comorbidities in the covariate adjustment in their model. In terms of the weight of evidence level, the evidence from a cohort study design is higher than a nested case-control study design.

In contrast to prior studies, our study demonstrates that ICS use in a subgroup of patients with concurrent COPD will raise the risk for lung cancer with an aHR at 3.78 (95% CI, 2.10–6.81) as compared with the subgroup of patients with concurrent COPD but with no ICS use (aHR 1.44, 95% CI 1.08–1.92). This result is unique because the results of previous observational studies pointed in the opposite direction.^{8,9} Therefore, the issue of whether ICS can prevent lung cancer or not still remains to be investigated.

How frequent is the coexistence of adult-onset asthma and COPD in an administrative database setting? In a retrospective population-based cohort study using Medicaid administrative data, Shaya et al reported that 46% of the asthma population carried a concomitant COPD diagnosis and thus the study gave a good estimate on the prevalence of coexisting asthma and COPD in the United States.^{26,27} Fairly similarly, our study using NHIRD data shows that rate of concomitant asthma–COPD disease is around 49% in the entire cohort of adult-onset asthma (Table 1). Although misclassification bias is potentially present in any of the above administrative claims database research, the authors would regard it as the real world data.

This study also provides a glimpse into the characteristics of this cohort of adult-onset asthma. The mean age is approximately 53 years, females account for up to 54% of the patients, and there is a low frequency of atopic dermatitis, at approximately 6%. In literature, adult-onset asthma has female preponderance, decreasing incidence with older age, and more severe disease as compared with childhood-onset asthma.^{13,14,28,29}

To suggest to our patients that the use of ICS may provide some protection against future lung cancer will create a false sense of security in patients with COPD, a well-known risk factor for lung cancer. Our study results have refuted the presence of any beneficial effects on cancer development; therefore, personalized management of patients with adult-onset asthma should avoid consideration of the prior use of ICS.

Limitations of the study

There are some notable limitations of the study. Although a physician-diagnosed adult-onset asthma is better than a self-reported one, a wrongly given ICD-9-CM diagnosis can happen, theoretically, which may result in misclassification bias. In this cohort study, the authors did not consider the impact of the patients' socioeconomic status, family history of cancer, and occupational exposures, none of which are available in the dataset. Because of the de-identified nature of the dataset, individuals in the study cohort cannot be contacted, and thus, no attempts to obtain personal or questionnaire interviews were feasible.

Conclusion

Recent research suggests that ICS are active as chemopreventive agents for lung cancer. We conducted a population-based cohort study on patients with adult-onset asthma with a proper person-time approach to determine whether ICS was beneficial. The present study demonstrates that there is no significant association between regular ICS use and future cancer development. However, this cohort study did not consider the patients' socioeconomic status, family history of cancer, and occupational exposures, which may potentially affect the risk estimates.

Acknowledgments

The authors thank the National Health Research Institute and the Department of the National Health Insurance, Ministry of Health and Welfare, Taiwan for the datasets used in this research.

Disclosure

The authors report no conflicts of interest in this work.

References

1. Juniper EF, Kline PA, Vanzieleghe MA, Ramsdale EH, O'Byrne PM, Hargreave FE. Effect of long-term treatment with an inhaled corticosteroid (budesonide) on airway hyperresponsiveness and clinical asthma in nonsteroid-dependent asthmatics. *Am Rev Respir Dis*. 1990;142(4): 832–836.
2. Oosterhoff Y, Overbeek SE, Douma R, et al. Lower leukotriene C(4) levels in bronchoalveolar lavage fluid of asthmatic subjects after 2.5 years of inhaled corticosteroid therapy. *Mediators Inflamm*. 1995;4(6): 426–430.
3. Sin DD, Man SF, Marciniuk DD, et al. The effects of fluticasone with or without salmeterol on systemic biomarkers of inflammation in chronic obstructive pulmonary disease. *Am J Respir Crit Care Med*. 2008; 177(11):1207–1214.
4. Rüdiger JJ, Gencay M, Yang JQ, Bihl M, Tamm M, Roth M. Fast beneficial systemic anti-inflammatory effects of inhaled budesonide and formoterol on circulating lymphocytes in asthma. *Respirology*. 2013; 18(5):840–847.

5. Wattenberg LW, Wiedmann TS, Estensen RD, Zimmerman CL, Steele VE, Kelloff GJ. Chemoprevention of pulmonary carcinogenesis by aerosolized budesonide in female A/J mice. *Cancer Res.* 1997;57(24):5489–5492.
6. Lam S, leRiche JC, McWilliams A, et al. A randomized phase IIb trial of pulmicort turbuhaler (budesonide) in people with dysplasia of the bronchial epithelium. *Clin Cancer Res.* 2004;10(19):6502–6511.
7. Veronesi G, Szabo E, Decensi A, et al. Randomized phase II trial of inhaled budesonide versus placebo in high-risk individuals with CT screen-detected lung nodules. *Cancer Prev Res (Phila).* 2011;4(1):34–42.
8. Parimon T, Chien JW, Bryson CL, McDonnell MB, Udris EM, Au DH. Inhaled corticosteroids and risk of lung cancer among patients with chronic obstructive pulmonary disease. *Am J Respir Crit Care Med.* 2007;175(7):712–719.
9. Kiri VA, Fabbri LM, Davis KJ, Soriano JB. Inhaled corticosteroids and risk of lung cancer among COPD patients who quit smoking. *Respir Med.* 2009;103(1):85–90.
10. Sohal SS, Soltani A, Reid D, et al. A randomized controlled trial of inhaled corticosteroids (ICS) on markers of epithelial-mesenchymal transition (EMT) in large airway samples in COPD: an exploratory proof of concept study. *Int J Chron Obstruct Pulmon Dis.* 2014;9:533–542.
11. Lee CH, Hyun MK, Jang EJ, Lee NR, Kim K, Yim JJ. Inhaled corticosteroid use and risks of lung cancer and laryngeal cancer. *Respir Med.* 2013;107(8):1222–1233.
12. Camargo CA Jr, Barr RG, Chen R, Speizer FE. Prospective study of inhaled corticosteroid use, cardiovascular mortality, and all-cause mortality in asthmatic women. *Chest.* 2008;134(3):546–551.
13. Amelink M, de Nijs SB, de Groot JC, et al. Three phenotypes of adult-onset asthma. *Allergy.* 2013;68(5):674–680.
14. de Nijs SB, Venekamp LN, Bel EH. Adult-onset asthma: is it really different? *Eur Respir Rev.* 2013;22(127):44–52.
15. Assimes TL, Suissa S. Immortal person time bias in pharmacoepidemiological studies of antihypertensive drugs. *Am J Cardiol.* 2011;108(6):902–903.
16. Suissa S. Effectiveness of inhaled corticosteroids in chronic obstructive pulmonary disease: immortal time bias in observational studies. *Am J Respir Crit Care Med.* 2003;168(1):49–53.
17. Suissa S. Inhaled steroids and mortality in COPD: bias from unaccounted immortal time. *Eur Respir J.* 2004;23(3):391–395.
18. Suissa S. Observational studies of inhaled corticosteroids in chronic obstructive pulmonary disease: misconstrued immortal time bias. *Am J Respir Crit Care Med.* 2006;173(4):464; author reply 464–465.
19. Suissa S. Immortal time bias in observational studies of drug effects. *Pharmacoepidemiol Drug Saf.* 2007;16(3):241–249.
20. Gau CS, Chang IS, Lin Wu FL, et al. Usage of the claim database of national health insurance programme for analysis of cisapride-erythromycin co-medication in Taiwan. *Pharmacoepidemiol Drug Saf.* 2007;16(1):86–95.
21. Kok VC, Horng JT, Chang WS, Hong YF, Chang TH. Allopurinol therapy in gout patients does not associate with beneficial cardiovascular outcomes: a population-based matched-cohort study. *PloS One.* 2014;9(6):e99102.
22. Kok VC, Horng JT, Huang JL, et al. Population-based cohort study on the risk of malignancy in East Asian children with Juvenile idiopathic arthritis. *BMC Cancer.* 2014;14:634.
23. Kok VC, Horng JT, Lin HL, Chen YC, Chen YJ, Cheng KF. Gout and subsequent increased risk of cardiovascular mortality in non-diabetics aged 50 and above: a population-based cohort study in Taiwan. *BMC Cardiovasc Disord.* 2012;12:108.
24. Kelly HW. Comparison of inhaled corticosteroids: an update. *Ann Pharmacother.* 2009;43(3):519–527.
25. Hosmer DW, Lemeshow S. Confidence interval estimation of interaction. *Epidemiology.* 1992;3(5):452–456.
26. Shaya FT, Maneval MS, Gbarayor CM, et al. Burden of COPD, asthma, and concomitant COPD and asthma among adults: racial disparities in a medicaid population. *Chest.* 2009;136(2):405–411.
27. Mannino DM. Coexisting asthma and COPD: confused clinicians or poor prognosticator? *Chest.* 2008;134(1):1–2.
28. Torén K, Ekerljung L, Kim JL, et al. Adult-onset asthma in west Sweden – incidence, sex differences and impact of occupational exposures. *Respir Med.* 2011;105(11):1622–1628.
29. Sood A, Qualls C, Schuyler M, et al. Adult-onset asthma becomes the dominant phenotype among women by age 40 years. The longitudinal CARDIA study. *Ann Am Thorac Soc.* 2013;10(3):188–197.

Supplementary material

Table S1 Comparison of the incidence density of cancer for ICS regular users and non-ICS users by different characteristics and the IRR

Characteristics	ICS regular users				Non-ICS ^a users		
	(n=2,117)	Cancer PY	Rate ^b	IRR (95% CI)	(n=17,732)	Cancer PY	Rate ^b
All	130	7,364.96	17.7	1.22 (1.02–1.47)	1,064	73,788.86	14.4
Age group (years)							
20–39	7	2,025.22	3.5	0.85 (0.39–1.83)	80	19,569.69	4.1
40–59	38	2,547.68	14.9	1.33 (0.95–1.87)	285	25,432.89	11.2
60–79	76	2,479.38	30.7	1.27 (1.00–1.61)	575	23,847.05	24.1
≥80	9	312.68	28.8	1.15 (0.58–2.26)	124	4,939.23	25.1
Sex							
Male	79	3,669.51	21.5	1.20 (0.95–1.52)	602	33,528.92	18.0
Female	51	3,695.45	13.8	1.20 (0.90–1.61)	462	40,259.94	11.5
CCI group							
CCI score 0	43	3,774.65	11.4	1.01 (0.73–1.38)	426	37,592.66	11.3
CCI score 1, 2	69	3,004.84	23.0	1.36 (1.06–1.75)	500	29,566.91	16.9
CCI score 3, 4	15	495.89	30.2	1.46 (0.85–2.50)	115	5,557.48	20.7
CCI score ≥5	3	89.58	33.5	1.56 (0.47–5.20)	23	1,071.81	21.5
Comorbidities							
Allergic rhinitis							
No	72	3,711.16	19.4	1.25 (0.98–1.59)	785	50,591.92	15.5
Yes	58	3,653.81	15.9	1.32 (0.99–1.75)	279	23,196.94	12.0
Atopic dermatitis							
No	120	6,944.35	17.3	1.21 (1.00–1.46)	1,007	70,444.21	14.3
Yes	10	420.61	23.8	1.40 (0.71–2.73)	57	3,344.65	17.0
COPD							
No	26	3,202.63	8.1	0.68 (0.46–1.01)	551	46,100.24	12.0
Yes	104	4,162.33	25.0	1.35 (1.09–1.67)	513	27,688.62	18.5
Diabetes mellitus							
No	102	6,176.01	16.5	1.24 (1.01–1.52)	820	61,352.54	13.4
Yes	28	1,188.96	23.6	1.20 (0.81–1.77)	244	12,436.32	19.6
Hypertension							
No	60	4,503.63	13.3	1.27 (0.97–1.66)	484	46,113.02	10.5
Yes	70	2,861.33	24.5	1.17 (0.91–1.50)	580	27,675.84	21.0
Depression							
No	125	7,273.93	17.2	1.19 (0.99–1.43)	1,051	72,757.90	14.4
Yes	5	91.04	54.9	4.36 (1.55–12.2)	13	1,030.96	12.6
GERD							
No	129	7,311.10	17.6	1.22 (1.02–1.47)	1,062	73,617.95	14.4
Yes	1	53.86	18.6	1.59 (0.14–17.5)	2	170.91	11.7
Osteoporosis							
No	125	7,139.83	17.5	1.22 (1.01–1.47)	1,024	71,470.03	14.3
Yes	5	225.13	22.2	1.29 (0.51–3.26)	40	2,318.83	17.3
Heart failure							
No	105	6,738.45	15.6	1.12 (0.91–1.37)	955	68,580.29	13.9
Yes	25	626.52	39.9	1.91 (1.23–2.94)	109	5,208.57	20.9
Dyslipidemia							
No	104	6,503.08	16.0	1.15 (0.94–1.41)	907	65,118.64	13.9
Yes	26	861.88	30.2	1.67 (1.10–2.52)	157	8,670.22	18.1
Rhinosinusitis							
No	121	6,915.24	17.5	1.21 (1.00–1.46)	1,025	70,843.45	14.5
Yes	9	449.72	20.0	1.51 (0.73–3.12)	39	2,945.41	13.2
Cardiac arrhythmia							
No	96	6,450.24	14.9	1.09 (0.89–1.35)	889	65,254.08	13.6
Yes	34	914.73	37.2	1.81 (1.26–2.62)	175	8,534.78	20.5

(Continued)

Table S1 (Continued)

Characteristics	ICS regular users				Non-ICS ^a users		
	(n=2,117)	Cancer PY	Rate ^b	IRR (95% CI)	(n=17,732)	Cancer PY	Rate ^b
Coronary heart disease							
No	76	5,896.31	12.9	1.03 (0.81–1.30)	736	58,698.69	12.5
Yes	54	1,468.66	36.8	1.69 (1.27–2.26)	328	15,090.17	21.7
Follow-up (years)							
<1	33	186.46	177.0	0.68 (0.48–0.98)	354	1,368.30	258.7
1–3	48	1,221.66	39.3	0.94 (0.69–1.26)	371	8,838.15	42.0
3–5	34	2,395.81	14.2	1.13 (0.79–1.63)	218	17,411.47	12.5
5–7	14	2,565.44	5.5	1.32 (0.76–2.31)	108	26,183.84	4.1
>7	1	995.60	1.0	1.54 (0.20–11.8)	13	19,987.10	0.7
Other asthma medication							
LABA	79	4,427.38	17.8	1.05 (0.15–7.52)	1	58.61	17.1
SABA	23	1,114.21	20.6	1.21 (0.68–2.14)	24	1,405.18	17.1
LTRA	12	1,048.86	11.4	1.21 (0.50–2.97)	8	848.70	9.4
Theophylline	94	4,417.33	21.3	1.43 (1.15–1.78)	510	34,296.29	14.9
OCS	25	1,486.65	16.8	1.17 (0.76–1.79)	127	8,818.54	14.4
Smoking-related diagnoses							
Yes	80	2,666.50	30.0	1.34 (1.04–1.71)	303	13,490.45	22.5
No	50	4,698.46	10.6	0.84 (0.63–1.12)	761	60,298.41	12.6

Notes: ^aReferent group. ^bIncidence rate, per 1,000 PY. Values shown in bold are statistically significant.

Abbreviations: CCI, Charlson comorbidity index; CI, confidence interval; COPD, chronic obstructive pulmonary disease; GERD, gastroesophageal reflux; ICS, inhaled corticosteroids; IRR, incidence rate ratio; LABA, long-acting beta₂-agonists; LTRA, leukotriene receptor antagonists; OCS, oral corticosteroids; PY, person-years; SABA, inhaled short-acting beta₂-agonists.

Therapeutics and Clinical Risk Management

Dovepress

Publish your work in this journal

Therapeutics and Clinical Risk Management is an international, peer-reviewed journal of clinical therapeutics and risk management, focusing on concise rapid reporting of clinical studies in all therapeutic areas, outcomes, safety, and programs for the effective, safe, and sustained use of medicines. This journal is indexed on PubMed Central, CAS,

EMBASE, Scopus and the Elsevier Bibliographic databases. The manuscript management system is completely online and includes a very quick and fair peer-review system, which is all easy to use. Visit <http://www.dovepress.com/testimonials.php> to read real quotes from published authors.

Submit your manuscript here: <http://www.dovepress.com/therapeutics-and-clinical-risk-management-journal>