

Single- and multiple-dose pharmacokinetics, pharmacodynamics, and safety of apixaban in healthy Chinese subjects [Corrigendum]

Cui Y, Song Y, Wang J, et al. *Clinical Pharmacology: Advances and Applications*. 2013;5(1):177–184.

Note that on page 182, Figure 3 should be corrected as follows, with the line for mean anti-Xa activity extended through to 72 hours post dose on Day 9, and the Day 1 plasma apixaban concentration-time profile rendering error bars and symbols more visually apparent.

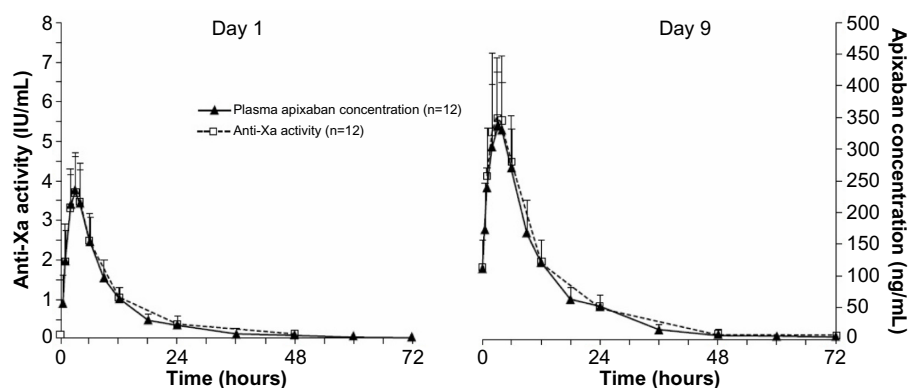


Figure 3 Mean anti-Xa activity and plasma apixaban concentration versus time following single-dose administration (day 1) and at steady state (day 9). Error bars show +1 standard deviation from the mean.

Clinical Pharmacology: Advances and Applications

Publish your work in this journal

Clinical Pharmacology: Advances and Applications is an international, peer-reviewed, open access journal publishing original research, reports, reviews and commentaries on all areas of drug experience in humans. The manuscript management system is completely online and includes a very quick and fair peer-review system, which is all easy to use.

Submit your manuscript here: <http://www.dovepress.com/clinical-pharmacology-advances-and-applications-journal>

Visit <http://www.dovepress.com/testimonials.php> to read real quotes from published authors.