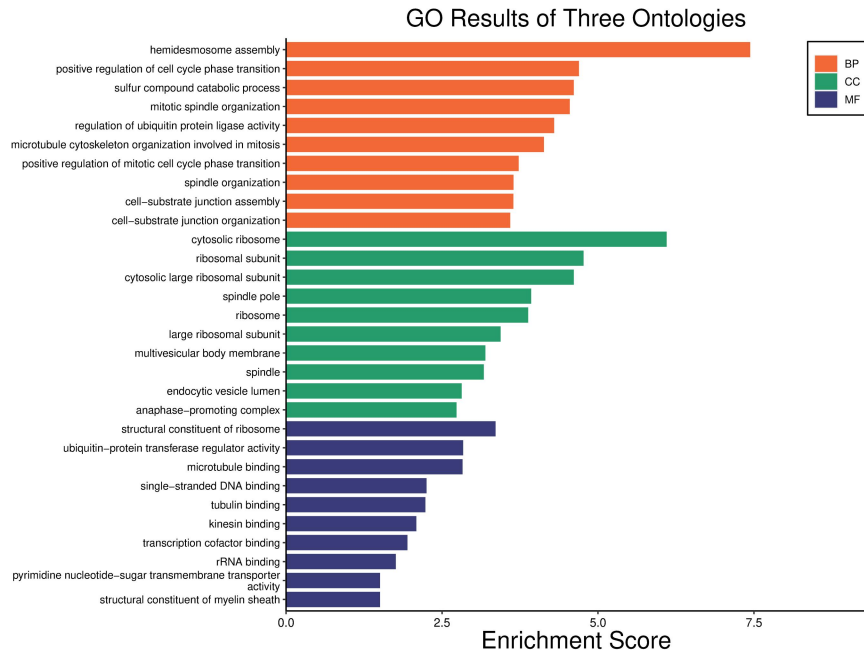
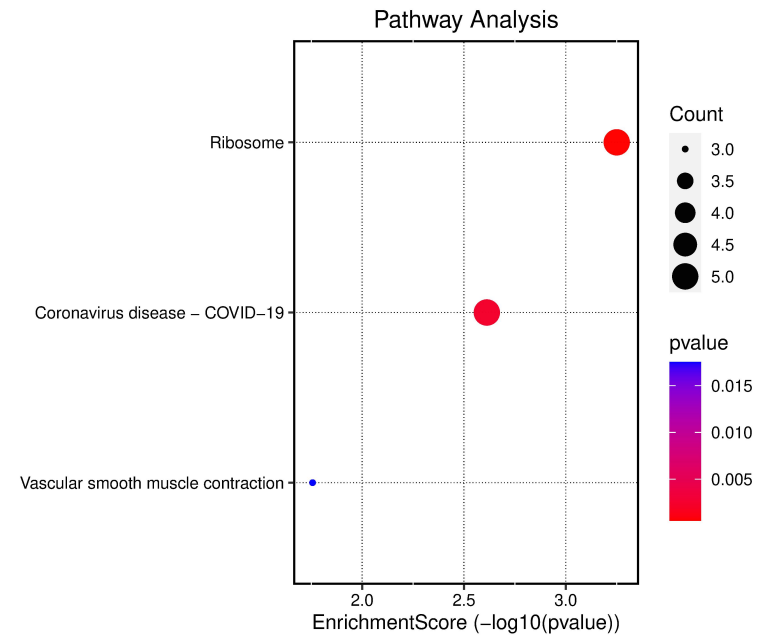
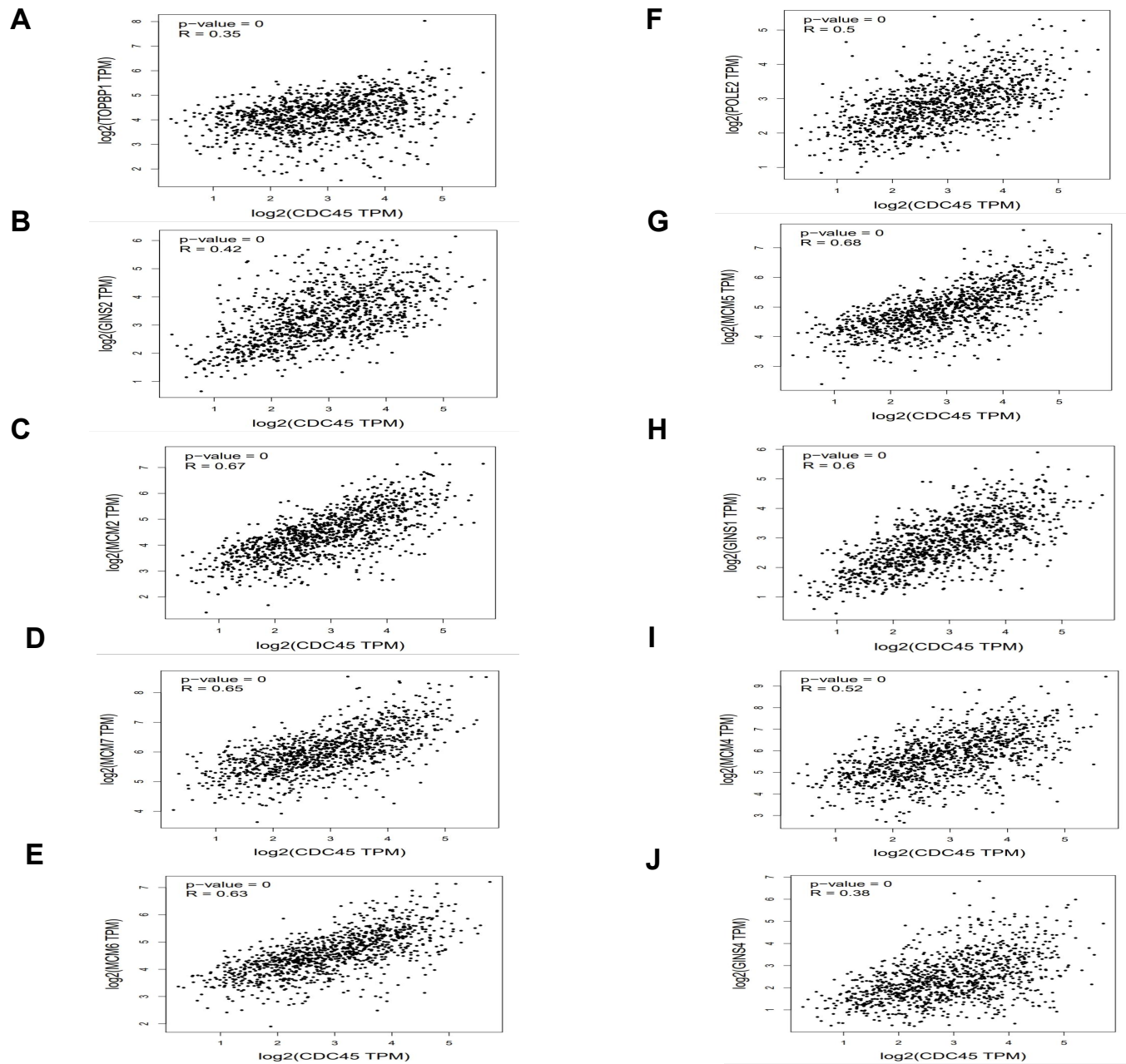
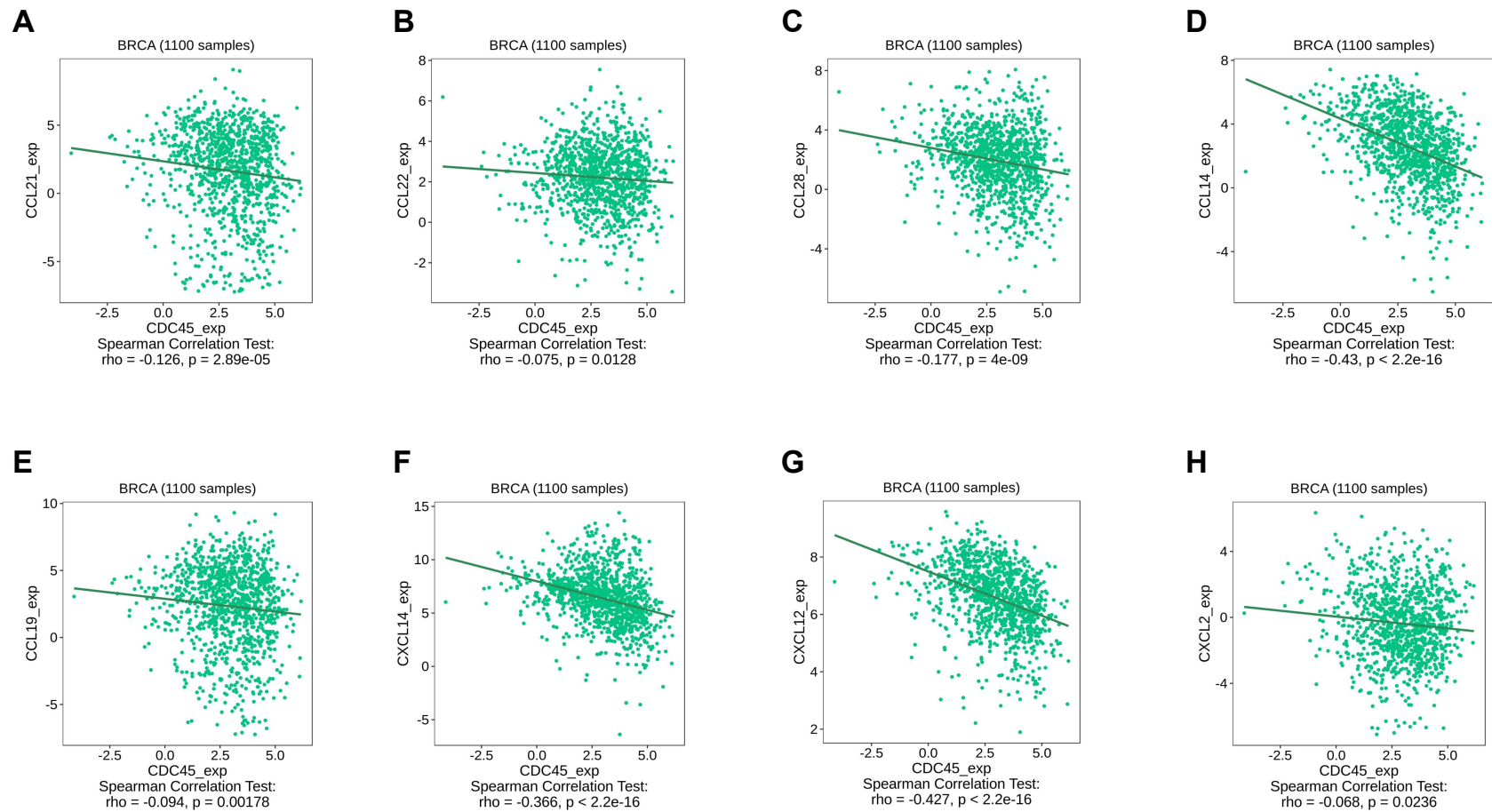


A**B**

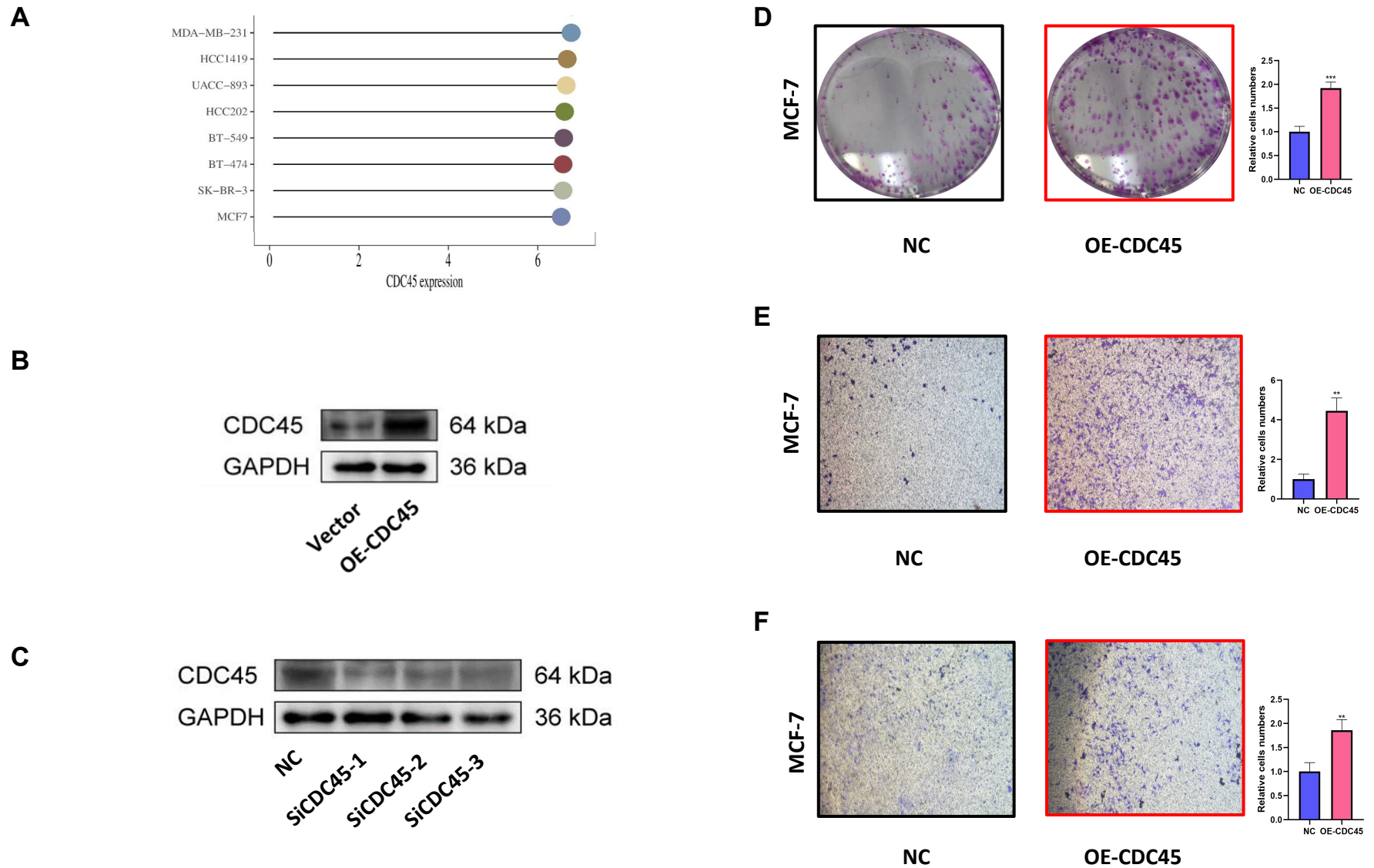
Supplementary Figure 1 GO and KEGG biological analysis were performed for DEGs. (A), The GO biological analysis among DEGs. (B), The KEGG biological analysis among DEGs.



Supplementary Figure 2 The correlation coefficient between CDC45 and associated genes (A-J).



Supplementary Figure 3 The exploration of chemokines negatively correlated with the expression level of CDC45 (A-H).



Supplementary Figure 4 Functional experiments and molecular mechanism exploration of over-expression CDC45.(A) , Expression levels of CDC45 in different breast cancer cell lines. (B-C) , The over-expression and knockdown efficiency verification of CDC45 by westernblot assay.(D) , The over-expression of CDC45 in MCF7 cells verified by clone formation.(E-F) , The over-expression of CDC45 in MCF7 cells verified by migration and invasion experiments.(**P < 0.01, ***P < 0.001).