

SUPPLEMENTARY MATERIAL

Table S1. Number of rimegepant tablets utilized per month among all treated participants.....Page 2

Table S2. Number of days per month using select analgesics or antiemetics.....Page 4

Table S3. List of institutional review boards and ethics committees approving the study protocol....Page 7

Figure S1. Proportion of participants with (A) 100% and (B) 50% reduction in the mean number of days per month using select analgesics following initiation of rimegepant treatment.....Page 8

Figure S2. Proportion of participants with (A) 100% and (B) 50% reduction in the mean number of days per month using select antiemetics following initiation of rimegepant treatment.....Page 9

Table S1. Number of rimegepant tablets utilized per month among all treated participants.

| Time interval | Rimegepant 75 mg dosing cohort | | | Overall |
|---------------|--------------------------------|----------------------------|--------------------------------|-----------|
| | PRN (2–8) ^a | PRN (9–14) ^b | EOD+PRN (4–14) ^c | |
| Weeks 1–4 | | | | |
| n | 1033 | 481 | 286 | 1800 |
| Mean (SD) | 4.9 (3.3) | 8.5 (4.3) | 12.5 (3.4) | 7.1 (4.6) |
| Median | 4.0 | 8.0 | 13.0 | 6.0 |
| Weeks 5–8 | | | | |
| N | 998 | 452 | 269 | 1719 |
| Mean (SD) | 5.6 (3.8) | 9.2 (4.9) | 14.4 (4.0) | 7.9 (5.2) |
| Median | 5.0 | 8.0 | 15.0 | 7.0 |
| Weeks 9–12 | | | | |
| n | 959 | 424 | 251 | 1634 |
| Mean (SD) | 5.7 (4.1) | 8.7 (4.9) | 14.0 (3.3) | 7.7 (5.2) |
| Median | 5.0 | 8.0 | 14.0 | 7.0 |
| Weeks 13–16 | | | | |
| N | 925 | 402 | - | 1460 |
| Mean (SD) | 5.5 (3.9) | 8.3 (5.2) | - | 6.0 (4.5) |
| Median | 5.0 | 8.0 | - | 5.0 |
| Weeks 17–20 | | | | |
| n | 889 | 382 | - | 1274 |
| Mean (SD) | 5.6 (3.8) | 8.3 (5.0) | - | 6.4 (4.4) |
| Median | 5.0 | 8.0 | - | 6.0 |
| Weeks 21–24 | | | | |
| n | 861 | 359 | - | 1220 |
| Mean (SD) | 5.7 (4.2) | 7.9 (4.8) | - | 6.3 (4.5) |
| Median | 5.0 | 7.0 | - | 6.0 |
| Weeks 25–28 | | | | |
| n | 835 | 343 | - | 1178 |
| Mean (SD) | 5.6 (4.0) | 8.1 (5.0) | - | 6.3 (4.5) |
| Median | 5.0 | 8.0 | - | 6.0 |
| Weeks 29–32 | | | | |
| n | 802 | 322 | - | 1124 |
| Mean (SD) | 5.6 (4.0) | 8.1 (4.9) | - | 6.3 (4.4) |
| Median | 5.0 | 7.0 | - | 6.0 |
| Weeks 33–36 | | | | |
| n | 778 | 312 | - | 1090 |
| Mean (SD) | 5.7 (4.2) | 8.3 (5.1) | - | 6.4 (4.6) |
| Median | 5.0 | 7.5 | - | 6.0 |
| Weeks 37–40 | | | | |
| n | 755 | 303 | - | 1058 |
| Mean (SD) | 5.7 (4.2) | 7.9 (5.1) | - | 6.3 (4.6) |
| Median | 5.0 | 7.0 | - | 5.0 |
| Weeks 41–44 | | | | |
| n | 727 | 293 | - | 1020 |
| Mean (SD) | 5.7 (4.4) | 8.2 (5.3) | - | 6.4 (4.8) |

| | | | | |
|-------------|-----------|-----------|---|-----------|
| Median | 5.0 | 7.0 | - | 5.0 |
| <hr/> | | | | |
| Weeks 45–48 | | | | |
| n | 711 | 286 | - | 997 |
| Mean (SD) | 5.8 (4.1) | 8.0 (5.4) | - | 6.4 (4.6) |
| Median | 5.0 | 7.0 | - | 6.0 |
| <hr/> | | | | |
| Weeks 49–52 | | | | |
| n | 693 | 279 | - | 972 |
| Mean (SD) | 5.9 (4.6) | 8.1 (5.6) | - | 6.5 (5.0) |
| Median | 5.0 | 7.0 | - | 5.0 |

^aPRN dosing (up to 52 weeks) in participants with 2–8 moderate or severe attacks per month in the 3 months prior to screening.

^bPRN dosing (up to 52 weeks) in participants with 9–14 moderate or severe attacks per month in the 3 months prior to screening.

^cEOD+PRN dosing (up to 12 weeks) in participants with 4–14 moderate or severe attacks per month in the 3 months prior to screening.

Abbreviations: EOD, every other day; PRN, as needed; SD, standard deviation.

Table S2. Number of days per month using select analgesics or antiemetics.^a

| Time interval | Rimegepant 75 mg dosing cohort | | | Overall |
|-----------------------------|--------------------------------|----------------------------|--------------------------------|--------------|
| | PRN (2–8) ^b | PRN (9–14) ^c | EOD+PRN (4–14) ^d | |
| Observation period | | | | |
| n | 828 | 388 | 225 | 1441 |
| No. days, mean (SD) | 12.0 (11.1) | 14.0 (10.3) | 11.6 (10.0) | 12.5 (10.7) |
| No. days, median | 6.0 | 10.0 | 7.0 | 7.0 |
| Weeks 1–4 | | | | |
| n | 828 | 388 | 225 | 1441 |
| No. days, mean (SD) | 8.0 (11.8) | 9.2 (11.7) | 6.6 (10.6) | 8.1 (11.6) |
| No. days, median | 1.0 | 3.0 | 1.0 | 2.0 |
| Mean (SD) change | -3.9 (6.4) | -4.7 (6.6) | -5.0 (6.9) | -4.3 (6.6) |
| [95% CI] | [-4.4, -3.5] | [-5.4, -4.1] | [-6.0, -4.1] | [-4.7, -4.0] |
| <i>P</i> value ^e | <0.0001 | <0.0001 | <0.0001 | <0.0001 |
| Median change | -2.0 | -3.0 | -3.0 | -2.6 |
| Weeks 5–8 | | | | |
| n | 806 | 367 | 216 | 1389 |
| No. days, mean (SD) | 7.6 (11.8) | 8.6 (12.0) | 6.1 (10.7) | 7.6 (11.7) |
| No. days, median | 0.0 | 1.0 | 0.0 | 0.0 |
| Mean (SD) change | -4.3 (6.8) | -5.4 (7.1) | -5.4 (6.9) | -4.7 (6.9) |
| [95% CI] | [-4.7, -3.8] | [-6.1, -4.7] | [-6.4, -4.5] | [-5.1, -4.4] |
| <i>P</i> value ^e | <0.0001 | <0.0001 | <0.0001 | <0.0001 |
| Median change | -2.7 | -3.5 | -4.0 | -3.0 |
| Weeks 9–12 | | | | |
| n | 776 | 346 | 202 | 1324 |
| No. days, mean (SD) | 7.4 (11.8) | 8.6 (12.1) | 5.5 (10.5) | 7.4 (11.7) |
| No. days, median | 0.0 | 1.0 | 0.0 | 0.0 |
| Mean (SD) change | -4.3 (6.6) | -5.6 (7.2) | -5.8 (6.8) | -4.9 (6.8) |
| [95% CI] | [-4.8, -3.9] | [-6.4, -4.8] | [-6.7, -4.8] | [-5.3, -4.5] |
| <i>P</i> value ^e | <0.0001 | <0.0001 | <0.0001 | <0.0001 |
| Median change | -2.7 | -3.9 | -4.0 | -3.0 |
| Weeks 13–16 | | | | |
| n | 751 | 325 | – | 1195 |
| No. days, mean (SD) | 7.4 (11.8) | 8.2 (12.0) | – | 7.4 (11.8) |
| No. days, median | 0.0 | 0.0 | – | 0.0 |
| Mean (SD) change | -4.3 (6.5) | -5.6 (6.9) | – | -4.9 (6.8) |
| [95% CI] | [-4.8, -3.9] | [-6.4, -4.9] | – | [-5.2, -4.5] |
| <i>P</i> value ^e | <0.0001 | <0.0001 | – | <0.0001 |
| Median change | -2.7 | -4.0 | – | -3.0 |
| Weeks 17–20 | | | | |
| n | 724 | 309 | – | 1035 |
| No. days, mean (SD) | 7.5 (11.9) | 8.3 (12.1) | – | 7.7 (12.0) |
| No. days, median | 0.0 | 0.0 | – | 0.0 |
| Mean (SD) change | -4.2 (6.7) | -5.6 (7.0) | – | -4.6 (6.8) |
| [95% CI] | [-4.7, -3.7] | [-6.3, -4.8] | – | [-5.0, -4.2] |
| <i>P</i> value ^e | <0.0001 | <0.0001 | – | <0.0001 |

| | | | | |
|-----------------------------|--------------|--------------|---|--------------|
| Median change | -2.7 | -4.0 | - | -3.0 |
| <hr/> | | | | |
| Weeks 21–24 | | | | |
| n | 699 | 289 | - | 988 |
| No. days, mean (SD) | 7.4 (11.9) | 8.4 (12.2) | - | 7.7 (12.0) |
| No. days, median | 0.0 | 0.0 | - | 0.0 |
| Mean (SD) change | -4.3 (6.5) | -5.6 (6.8) | - | -4.7 (6.6) |
| [95% CI] | [-4.8, -3.8] | [-6.4, -4.8] | - | [-5.1, -4.3] |
| <i>P</i> value ^e | <0.0001 | <0.0001 | - | <0.0001 |
| Median change | -2.7 | -4.0 | - | -3.0 |
| <hr/> | | | | |
| Weeks 25–28 | | | | |
| n | 679 | 277 | - | 956 |
| No. days, mean (SD) | 7.2 (11.8) | 8.2 (12.2) | - | 7.5 (11.9) |
| No. days, median | 0.0 | 0.0 | - | 0.0 |
| Mean (SD) change | -4.4 (6.6) | -5.5 (6.6) | - | -4.7 (6.6) |
| [95% CI] | [-4.9, -3.9] | [-6.3, -4.7] | - | [-5.1, -4.3] |
| <i>P</i> value ^e | <0.0001 | <0.0001 | - | <0.0001 |
| Median change | -2.9 | -4.1 | - | -3.0 |
| <hr/> | | | | |
| Weeks 29–32 | | | | |
| n | 653 | 261 | - | 914 |
| No. days, mean (SD) | 7.4 (11.9) | 8.3 (12.3) | - | 7.6 (12.0) |
| No. days, median | 0.0 | 0.0 | - | 0.0 |
| Mean (SD) change | -4.3 (6.7) | -5.4 (6.5) | - | -4.6 (6.7) |
| [95% CI] | [-4.8, -3.8] | [-6.2, -4.6] | - | [-5.0, -4.2] |
| <i>P</i> value ^e | <0.0001 | <0.0001 | - | <0.0001 |
| Median change | -2.8 | -4.0 | - | -3.0 |
| <hr/> | | | | |
| Weeks 33–36 | | | | |
| n | 631 | 253 | - | 884 |
| No. days, mean (SD) | 7.5 (11.9) | 8.1 (12.2) | - | 7.6 (12.0) |
| No. days, median | 0.0 | 0.0 | - | 0.0 |
| Mean (SD) change | -4.2 (6.9) | -5.4 (6.4) | - | -4.5 (6.8) |
| [95% CI] | [-4.7, -3.6] | [-6.2, -4.7] | - | [-5.0, -4.1] |
| <i>P</i> value ^e | <0.0001 | <0.0001 | - | <0.0001 |
| Median change | -2.8 | -4.0 | - | -2.9 |
| <hr/> | | | | |
| Weeks 37–40 | | | | |
| n | 612 | 246 | - | 858 |
| No. days, mean (SD) | 7.3 (11.9) | 8.0 (12.1) | - | 7.5 (12.0) |
| No. days, median | 0.0 | 0.0 | - | 0.0 |
| Mean (SD) change | -4.4 (6.7) | -5.5 (6.6) | - | -4.7 (6.7) |
| [95% CI] | [-5.0, -3.9] | [-6.3, -4.7] | - | [-5.2, -4.3] |
| <i>P</i> value ^e | <0.0001 | <0.0001 | - | <0.0001 |
| Median change | -2.9 | -4.0 | - | -3.0 |
| <hr/> | | | | |
| Weeks 41–44 | | | | |
| n | 589 | 235 | - | 824 |
| No. days, mean (SD) | 7.3 (11.9) | 7.8 (12.1) | - | 7.5 (11.9) |
| No. days, median | 0.0 | 0.0 | - | 0.0 |
| Mean (SD) change | -4.3 (6.6) | -5.5 (6.4) | - | -4.7 (6.6) |
| [95% CI] | [-4.9, -3.8] | [-6.3, -4.7] | - | [-5.1, -4.2] |
| <i>P</i> value ^e | <0.0001 | <0.0001 | - | <0.0001 |

| | | | | |
|-----------------------------|--------------|--------------|---|--------------|
| Median change | -2.8 | -4.0 | - | -3.0 |
| Weeks 45–48 | | | | |
| n | 577 | 228 | - | 805 |
| No. days, mean (SD) | 7.2 (11.8) | 8.0 (12.1) | - | 7.4 (11.9) |
| No. days, median | 0.0 | 0.0 | - | 0.0 |
| Mean (SD) change | -4.3 (6.4) | -5.4 (6.6) | - | -4.6 (6.4) |
| [95% CI] | [-4.9, -3.8] | [-6.3, -4.6] | - | [-5.1, -4.2] |
| <i>P</i> value ^e | <0.0001 | <0.0001 | - | <0.0001 |
| Median change | -2.9 | -4.0 | - | -3.0 |
| Weeks 49–52 | | | | |
| n | 560 | 225 | - | 785 |
| No. days, mean (SD) | 7.2 (11.9) | 8.0 (12.1) | - | 7.5 (11.9) |
| No. days, median | 0.0 | 0.0 | - | 0.0 |
| Mean (SD) change | -4.3 (6.5) | -5.4 (6.5) | - | -4.7 (6.5) |
| [95% CI] | [-4.9, -3.8] | [-6.3, -4.6] | - | [-5.1, -4.2] |
| <i>P</i> value ^e | <0.0001 | <0.0001 | - | <0.0001 |
| Median change | -2.9 | -4.2 | - | -3.0 |

^aAmong participants using analgesics or antiemetics during the observation period: PRN (2–8), n = 828; PRN (9–14), n = 388; EOD + PRN (4–14), n = 225; Overall, n = 1441. Number of drug days per 4 weeks is prorated to 28 days in the (1) observation period and (2) last time interval for participants with <28 study days in their last time interval.

^bPRN dosing (up to 52 weeks) in participants with 2–8 moderate or severe attacks per month in the 3 months prior to screening.

^cPRN dosing (up to 52 weeks) in participants with 9–14 moderate or severe attacks per month in the 3 months prior to screening.

^dEOD+PRN dosing (up to 12 weeks) in participants with 4–14 moderate or severe attacks per month in the 3 months prior to screening.

^e*P* value is relative to the observation period.

Abbreviations: CI, confidence interval; EOD, every other day; PRN, as needed; SD, standard deviation.

Table S3. List of institutional review boards and ethics committees approving the study protocol.

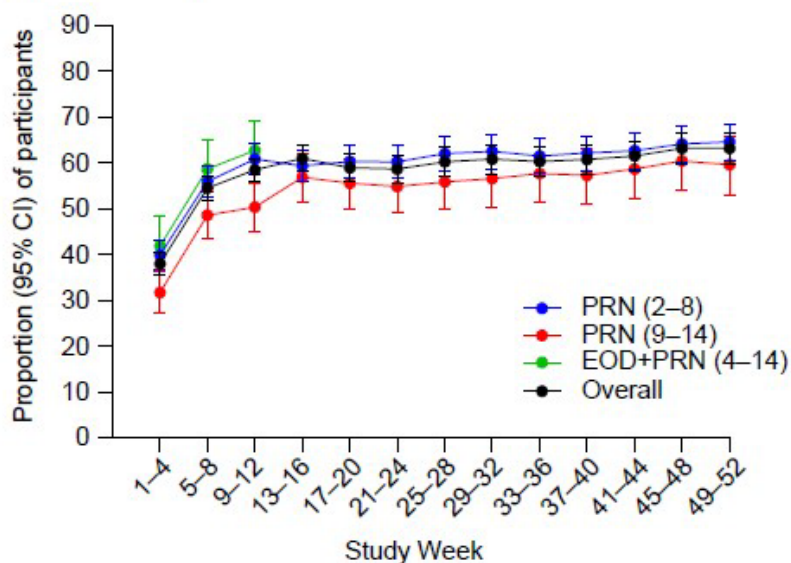
Schulman Associates IRB
44445 Lake Forest Drive
Suite 300
Cincinnati, OH 45242
United States of America

Advarra IRB
6940 Columbia Gateway Drive
Suite 110
Columbia, MD 21046

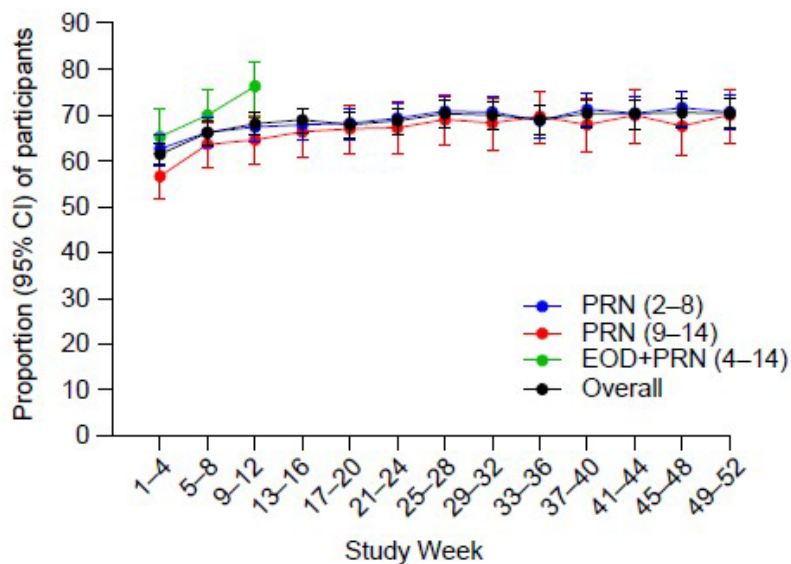
Biomedical Research Alliance of New York, LLC.
IRB
1981 Marcus Avenue
Suite 210
Lake Success, NY 11042
United States of America

Figure S1. Proportion of participants with (A) 100% and (B) 50% reduction in the mean number of days per month using select analgesics following initiation of rimegepant treatment.^a

A. 100% reduction



B. 50% reduction

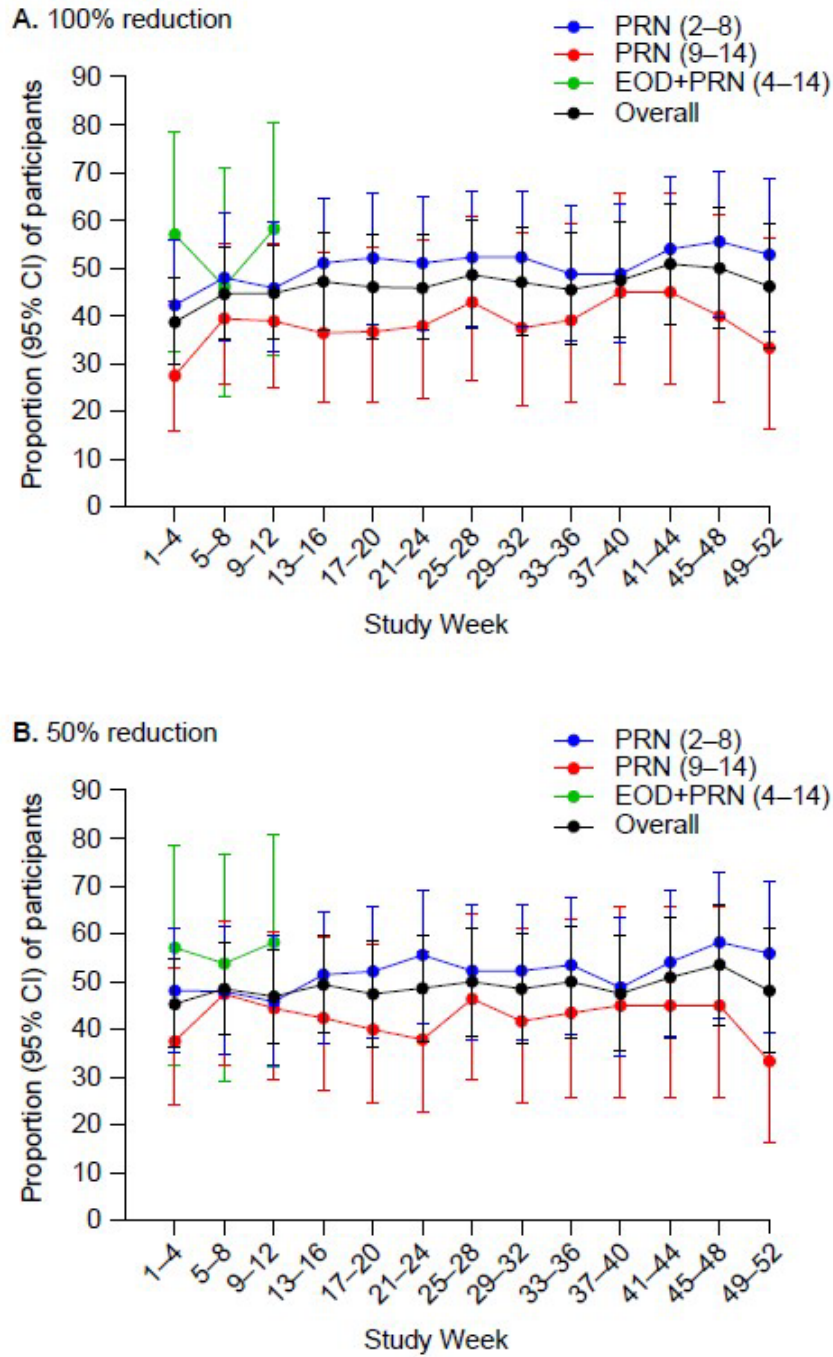


^aAmong participants using analgesics during the observation period: PRN (2-8), n = 814; PRN (9-14), n = 379; EOD + PRN (4-14), n = 222; Overall, n = 1415.

Confidence intervals were calculated using the Agresti-Coull method.

Abbreviations: CI, confidence interval; EOD, every other day; PRN, as needed.

Figure S2. Proportion of participants with (A) 100% and (B) 50% reduction in the mean number of days per month using select antiemetics following initiation of rimegepant treatment.^a



^aAmong participants using antiemetics during the observation period: PRN (2-8), n = 52; PRN (9-14), n = 40; EOD + PRN (4-14), n = 14; Overall, n = 106.

Confidence intervals were calculated using the Agresti-Coull method.

Abbreviations: CI, confidence interval; EOD, every other day; PRN, as needed.