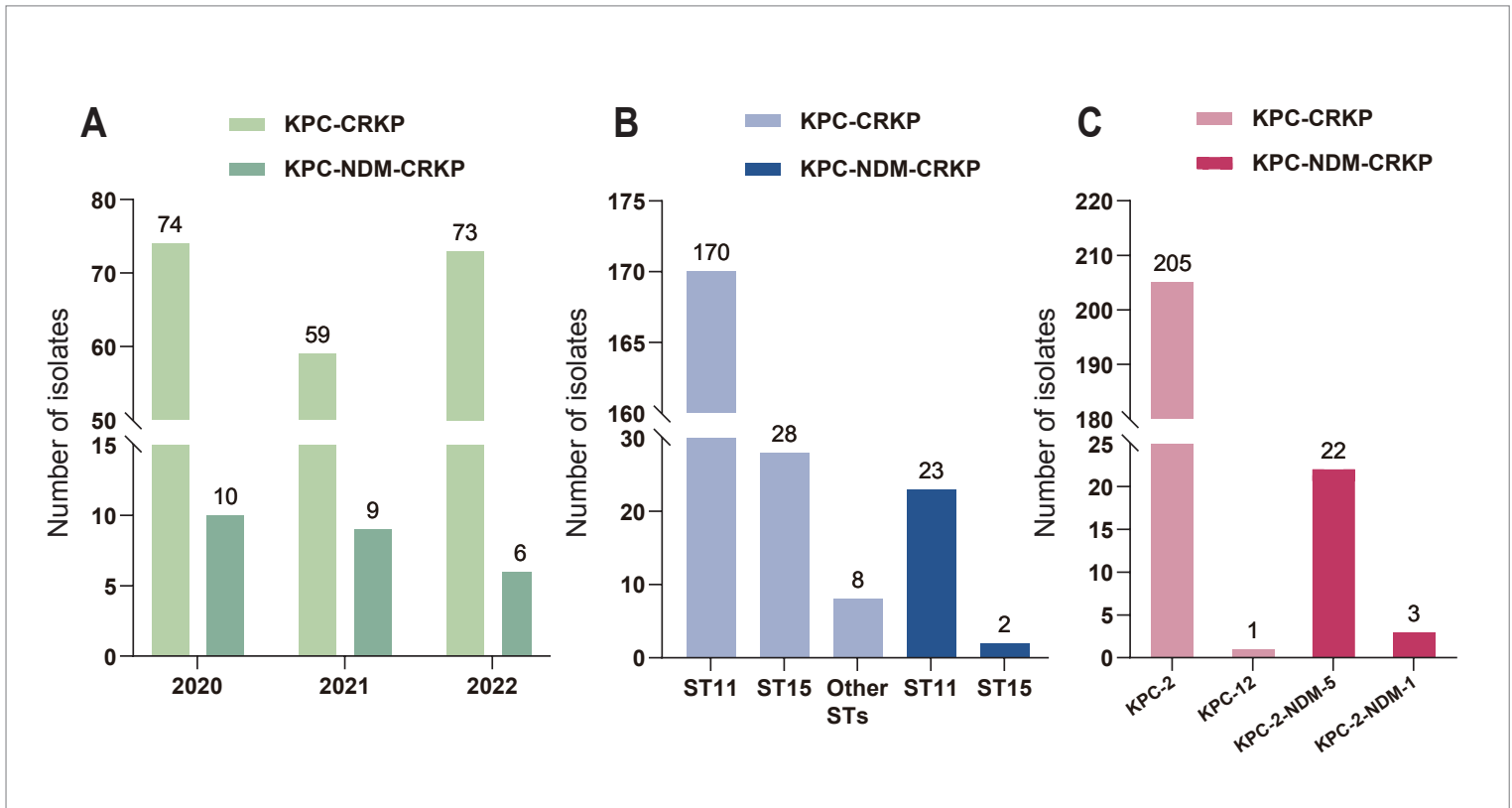


Supplementary Figure S1: The flowchart of this study

Abbreviations: *KPC*, *Klebsiella pneumoniae* carbapenemase; *NDM*, New Delhi metallo- β -lactamase; *CRKP*, carbapenem-resistant *Klebsiella pneumoniae*; *KPC-NDM-CRKP*, KPC and NDM co-producing carbapenem-resistant *Klebsiella pneumoniae*; *KPC-CRKP*, KPC-producing carbapenem-resistant *Klebsiella pneumoniae*; *BSI*, bloodstream infection



Supplementary Figure S2: (A) Prevalence of KPC-NDM-CRKPs and KPC-CRKPs under three years, 2020–2022; (B) STs of KPC-NDM-CRKPs and KPC-CRKPs; (C) KPC and NDM variants of KPC-NDM-CRKPs and KPC-CRKPs

Abbreviations: *KPC*, *Klebsiella pneumoniae* carbapenemase; *NDM*, New Delhi metallo- β -lactamase; *CRKP*, carbapenem-resistant *Klebsiella pneumoniae*; *KPC-NDM-CRKP*, KPC and NDM co-producing carbapenem-resistant *Klebsiella pneumoniae*; *KPC-CRKP*, KPC-producing carbapenem-resistant *Klebsiella pneumoniae*; *ST*, sequence type