

Supplemental Materials for

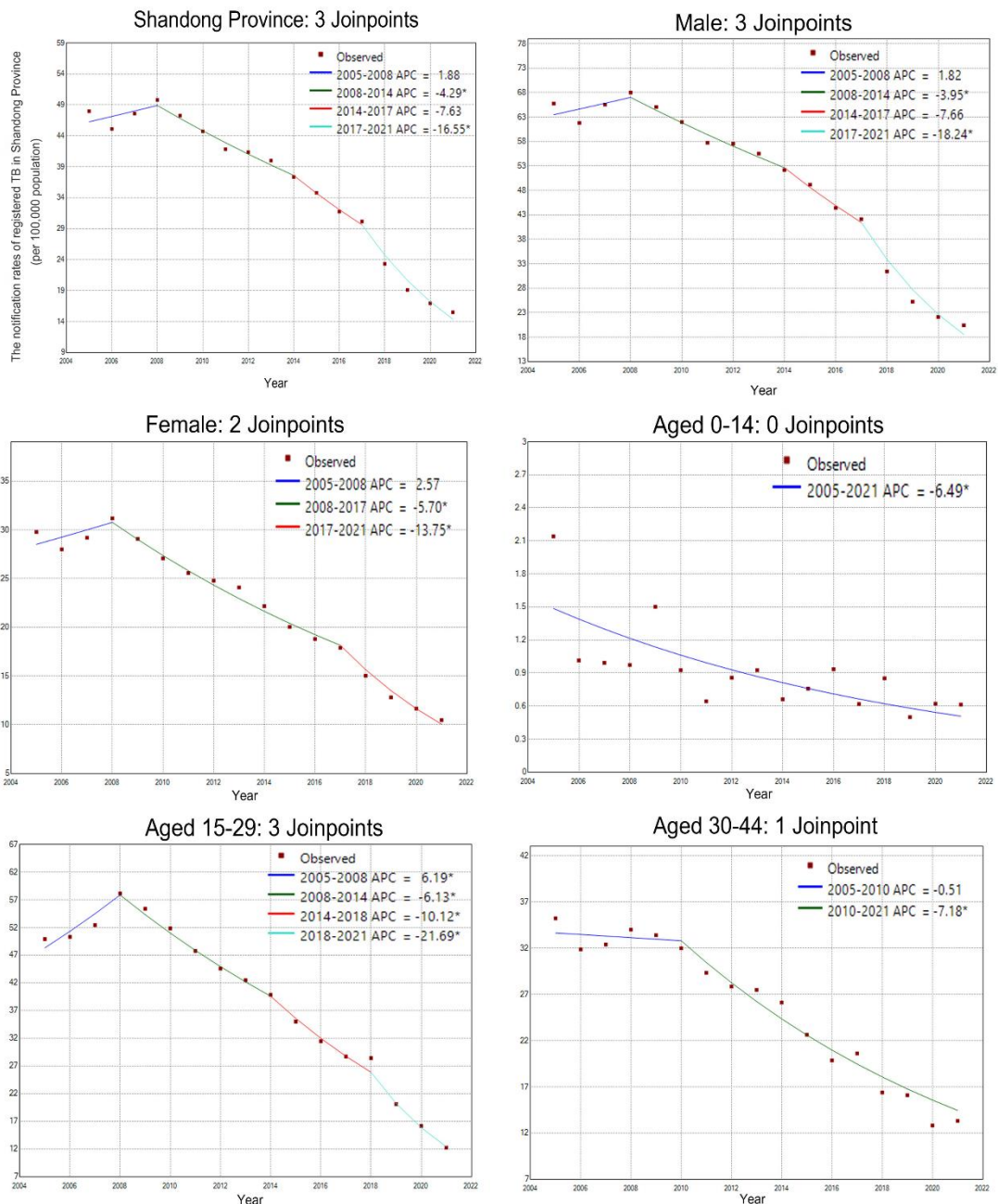
Trends in the notification rates and Treatment Outcome of Tuberculosis in Shandong Province, China, 2005-2021

This file includes:

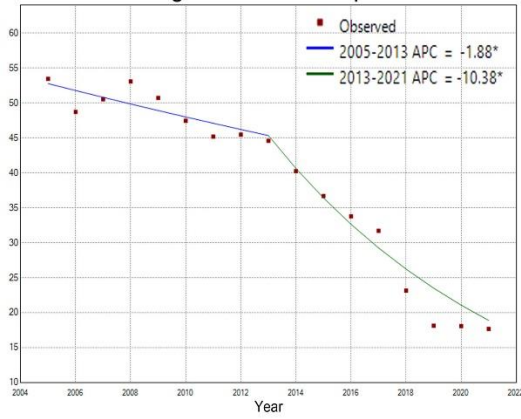
Figure S1 to S2

Figure S1 Change in notification rates of registered TB estimated by joinpoint model (solid line) in Shandong Province, 2005 - 2021.

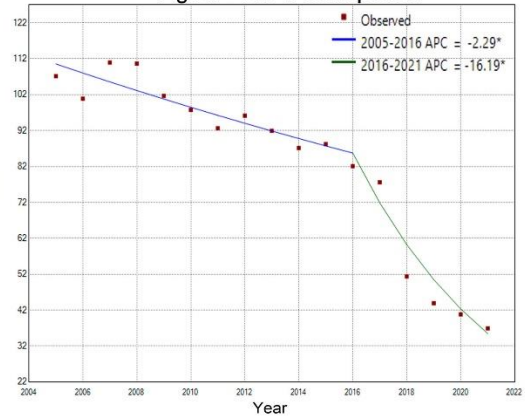
* $p < 0.05$



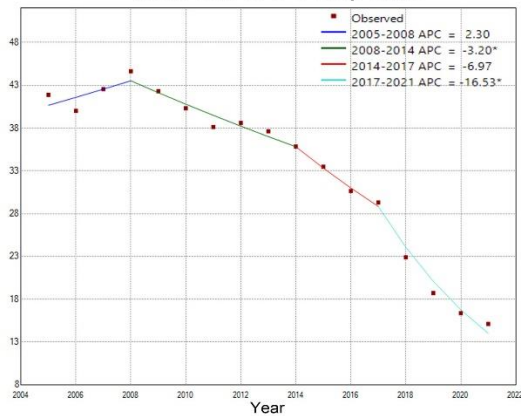
Aged 45-59: 1 Joinpoint



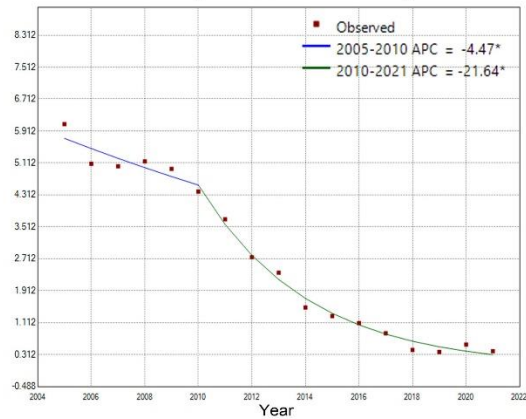
Aged ≥60: 1 Joinpoint



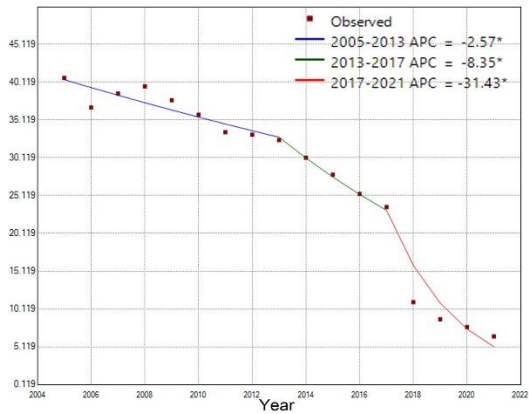
New case: 3 Joinpoints



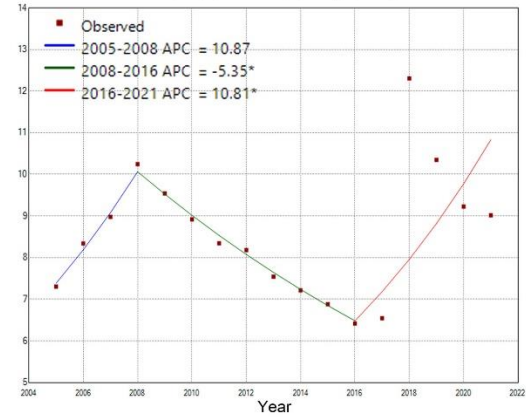
Relapse case: 1 Joinpoint



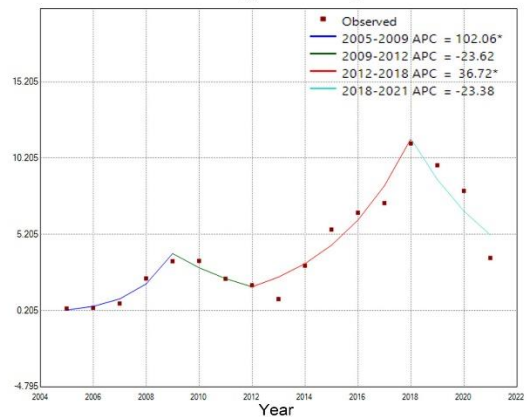
Rural: 2 Joinpoints



Urban: 2 Joinpoints



Floating: 3 Joinpoints



No floating: 1 Joinpoint

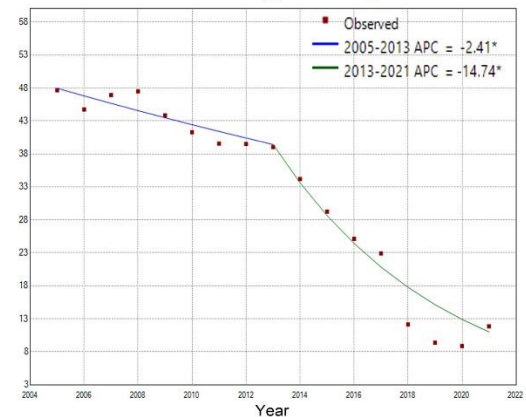
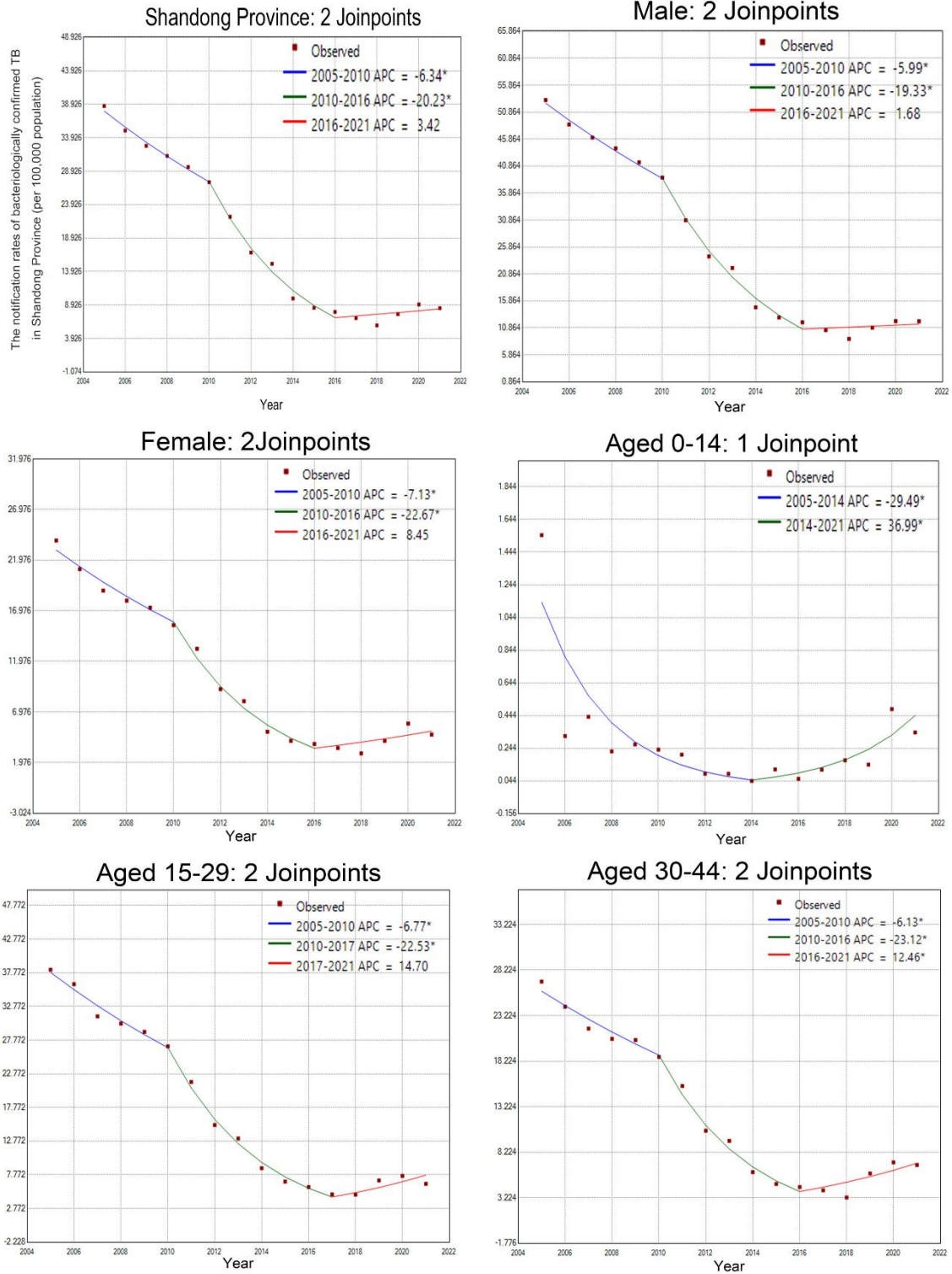
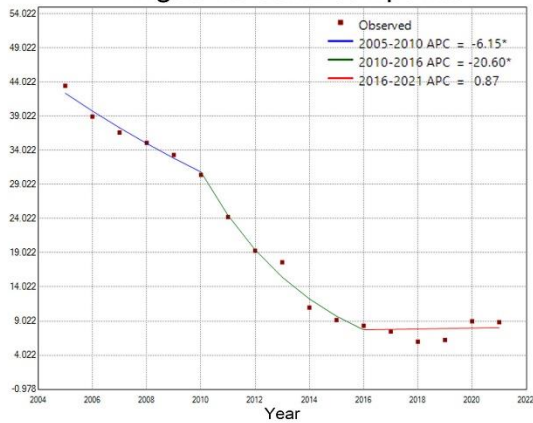


Figure S2 Change in notification rates of bacteriologically confirmed TB estimated by joinpoint model (solid line) in Shandong Province, 2005 - 2021.

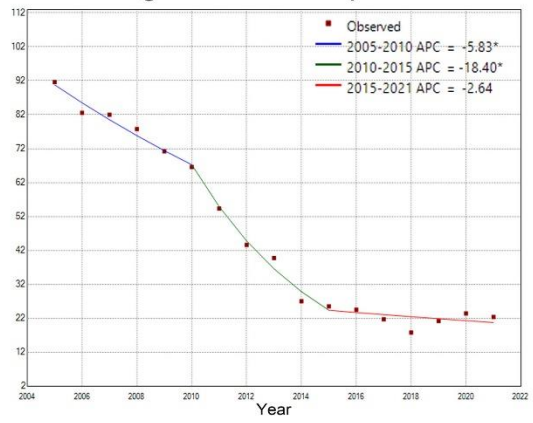
* $p < 0.05$



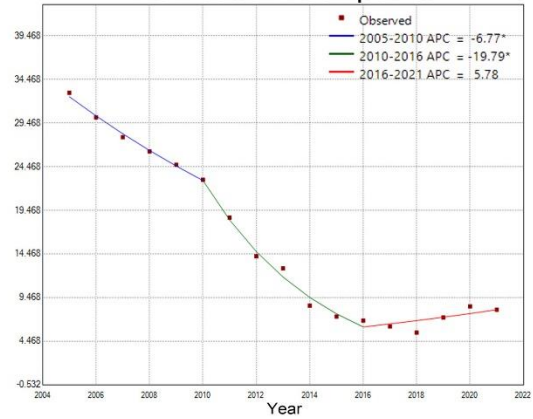
Aged 45-59: 2 Joinpoints



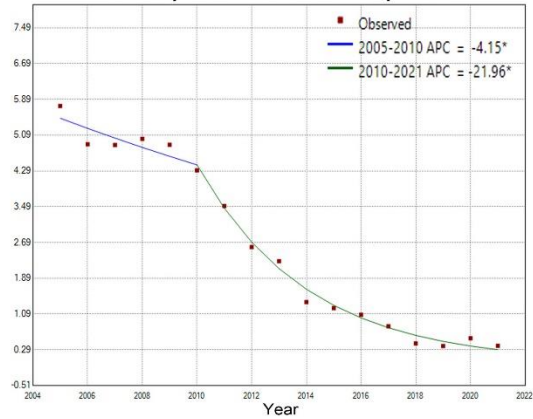
Aged ≥ 60: 2 Joinpoints



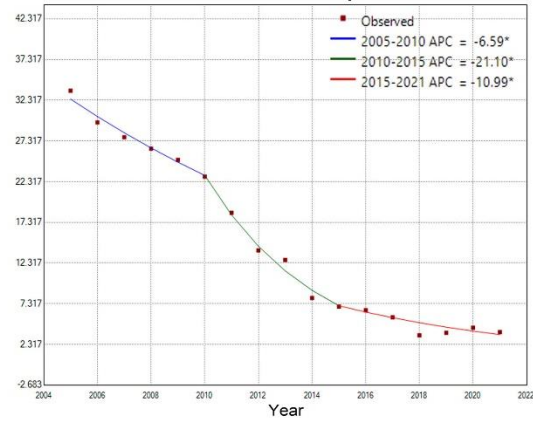
New case: 2 Joinpoints



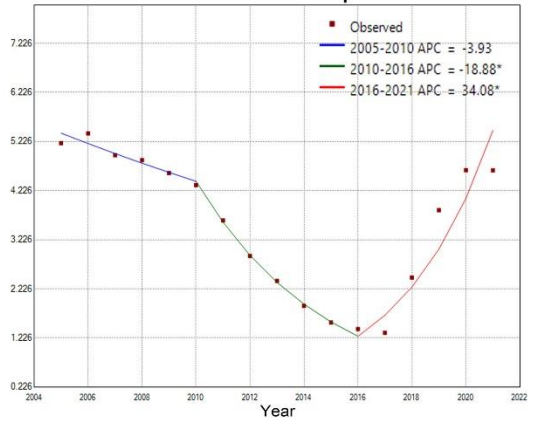
Relapse case: 1 Joinpoint



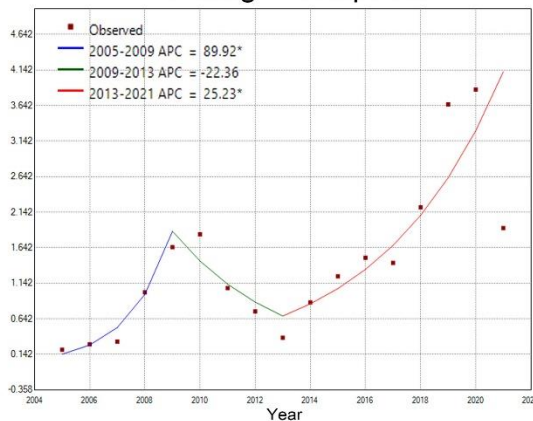
Rural: 2 Joinpoints



Urban: 2 Joinpoints



Floating: 2 Joinpoints



No floating: 2 Joinpoints

