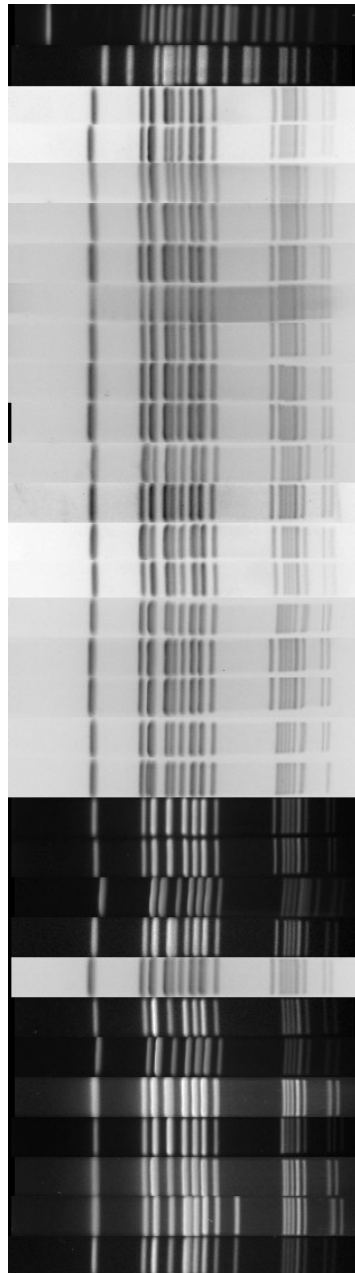
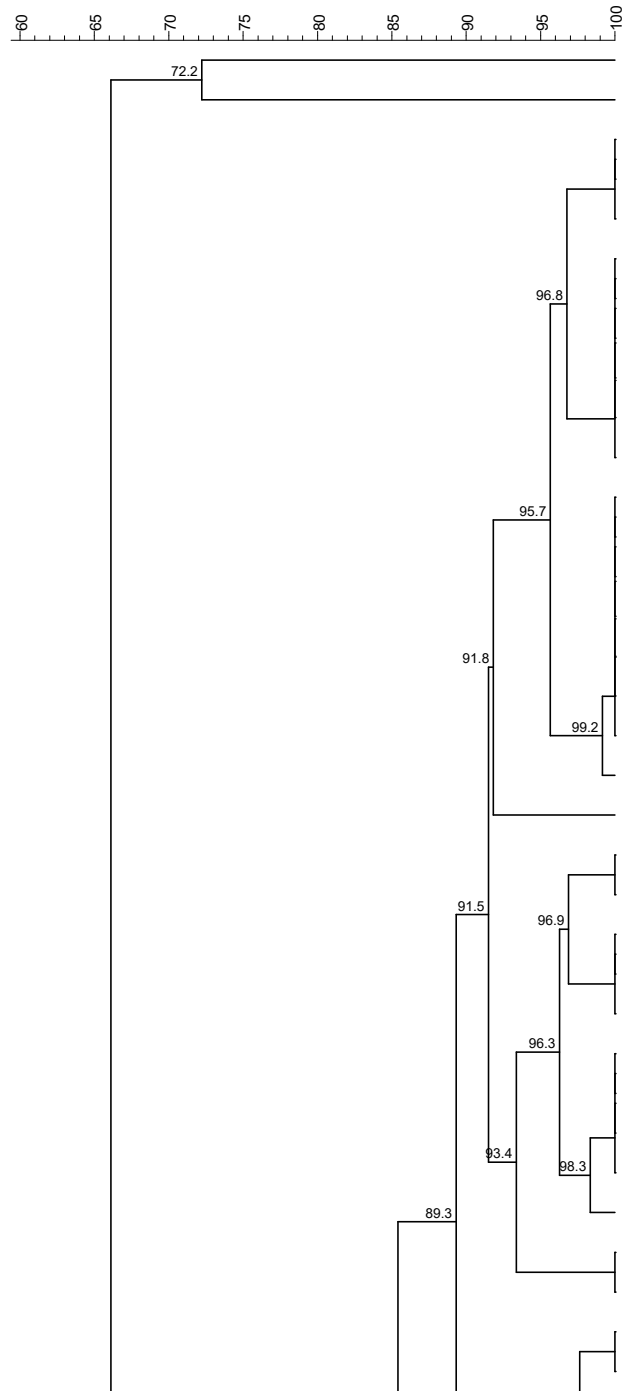


Supplementary materials

PFGE-XbaI

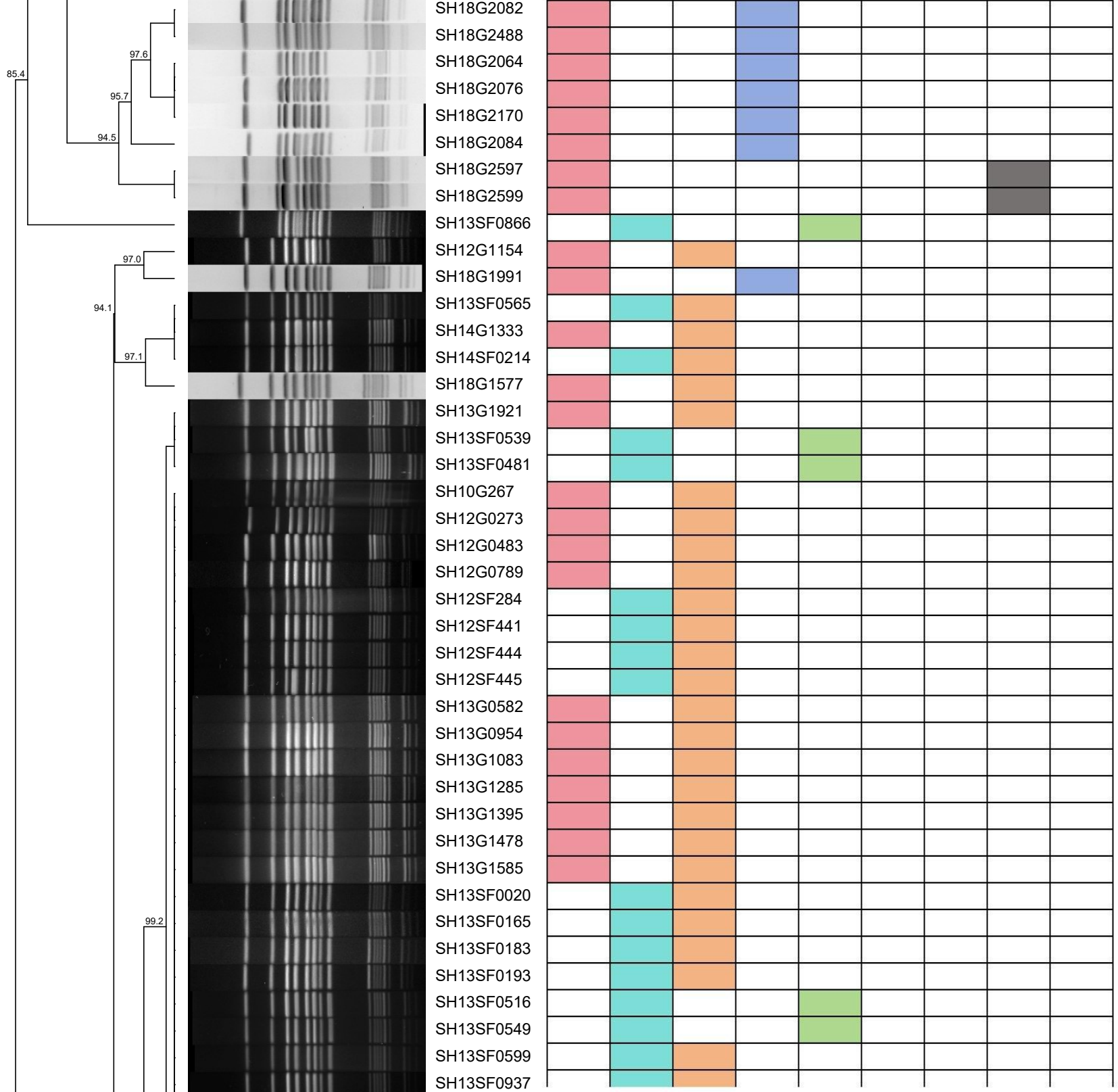
PFGE-XbaI

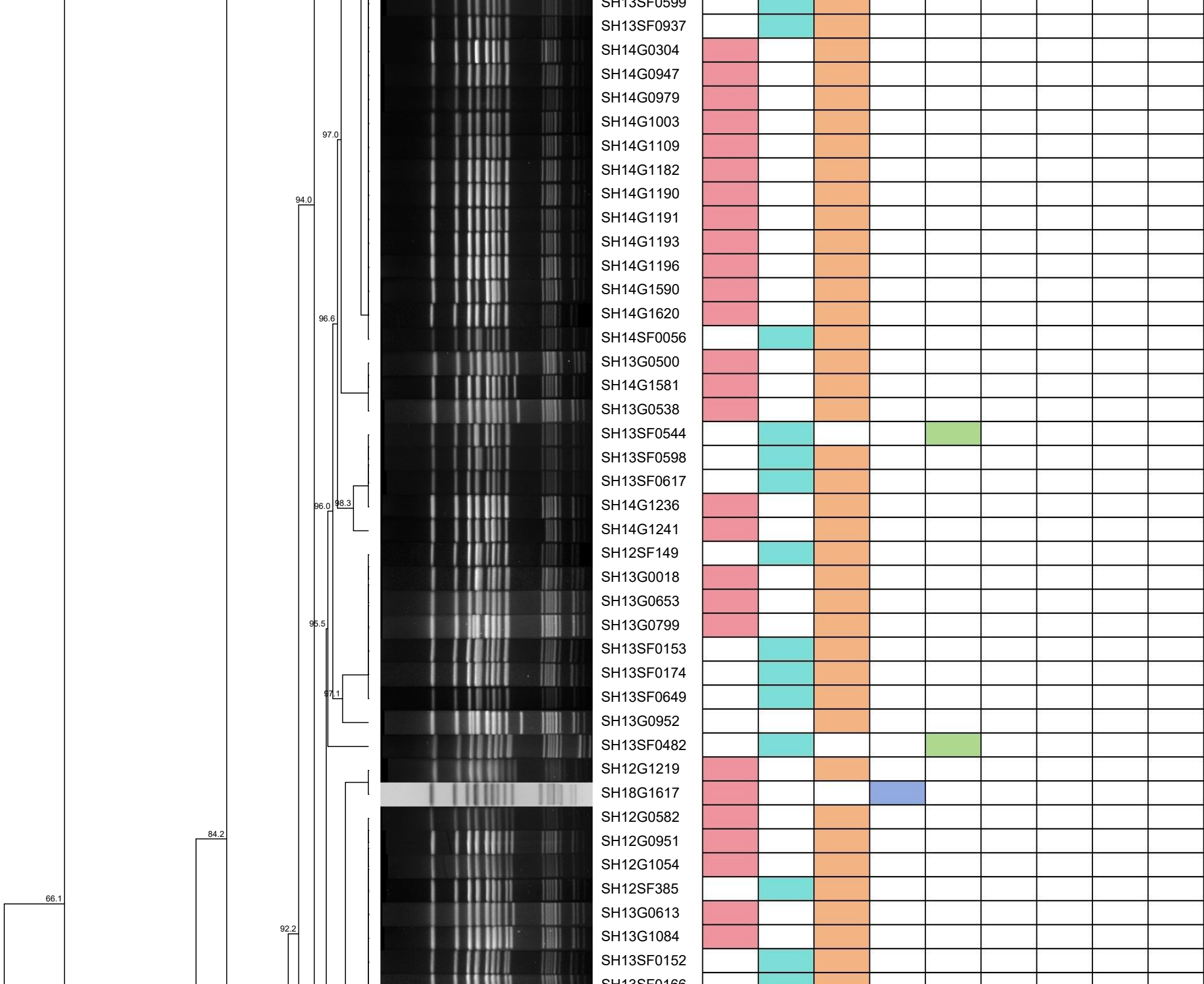


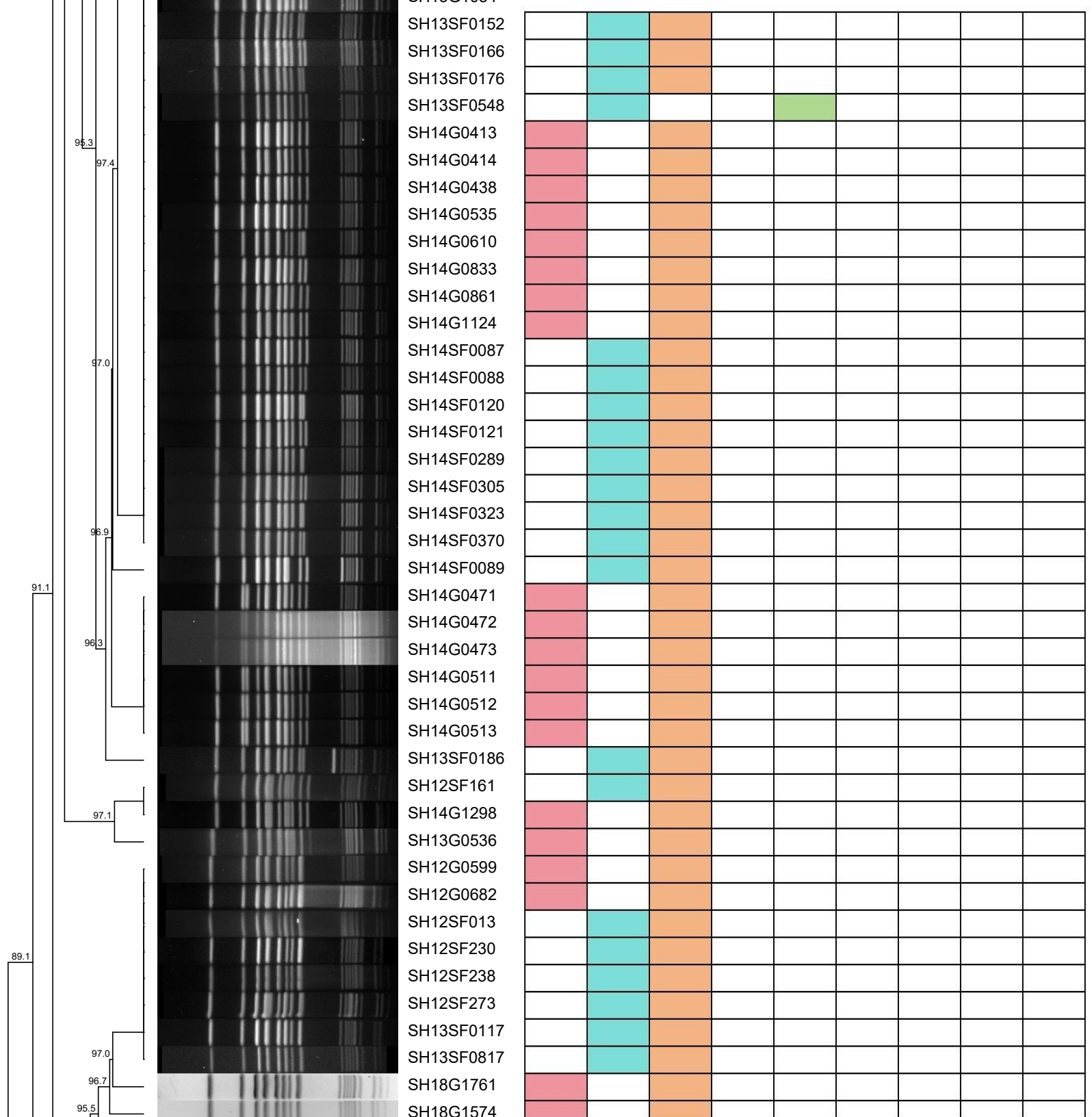
NO.

SH08SF180  
SH11SF192  
SH18G2134  
SH18G2189  
SH18G2229  
SH18G1418  
SH18G1454  
SH18G1491  
SH18G1492  
SH18G1508  
SH18G1509  
SH18G1642  
SH18G1754  
SH18G2099  
SH18G2112  
SH18SF1059  
SH18SF808  
SH18SF865  
SH18SF1057  
SH18SF1055  
SH14G0712  
SH14SF0011  
SH12G0327  
SH12SF412  
SH18G1513  
SH08SF178  
SH10G487  
SH13G1745  
SH14G0252  
SH13G1744  
SH13G2012  
SH13SF0119  
SH18G2082  
SH18G2488

	Human source	Non-human source	Shan ghai	Gua ngxi	Guang dong	Fujian	Hubei	Hebei	Shan xi
SH08SF180		■	■						
SH11SF192		■	■						
SH18G2134	■			■					
SH18G2189	■			■					
SH18G2229	■			■					
SH18G1418	■			■					
SH18G1454	■			■					
SH18G1491	■			■					
SH18G1492	■			■					
SH18G1508	■			■					
SH18G1509	■			■					
SH18G1642	■			■					
SH18G1754	■			■					
SH18G2099	■			■					
SH18G2112	■			■					
SH18SF1059		■	■						
SH18SF808		■		■					
SH18SF865		■		■					
SH18SF1057		■	■						
SH18SF1055		■	■						
SH14G0712	■		■						
SH14SF0011		■	■						
SH12G0327	■		■						
SH12SF412		■	■						
SH18G1513	■			■					
SH08SF178		■	■						
SH10G487	■		■						
SH13G1745		■					■		
SH14G0252	■		■						
SH13G1744		■					■		
SH13G2012	■		■						
SH13SF0119		■	■						
SH18G2082	■			■					
SH18G2488	■			■					









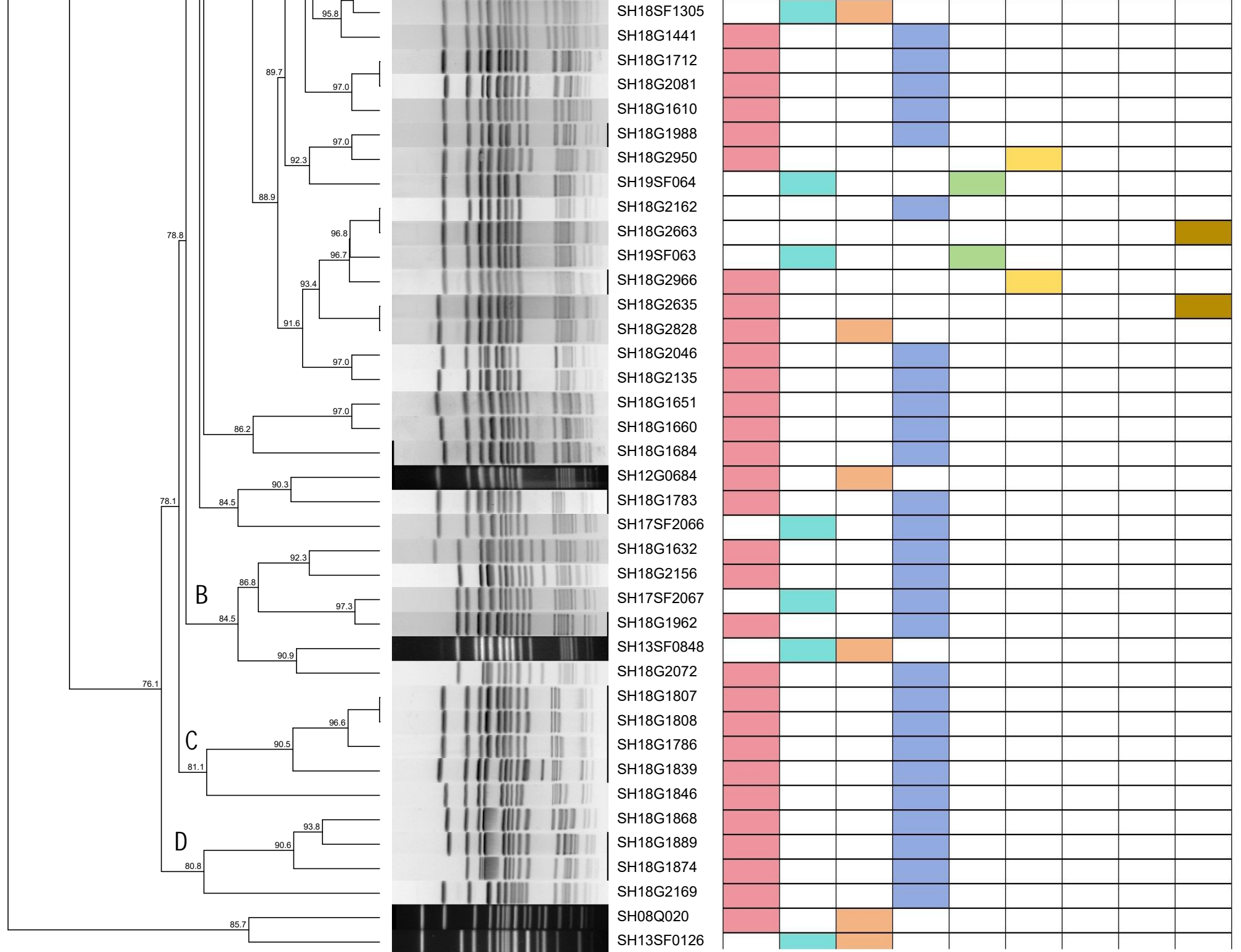


Figure S1. Dendrogram of PFGE types of human source and non-human source *Salmonella* Rissen isolates. PFGE, pulsed-field gel electrophoresis.