

Supplementary material

Figure S1 The forest plot displays effect variation across subgroups for the adjusted common odds ratio of less disability at 90 days as compared with the Cold group. The forest plot displays effect variation across Age and Sex subgroups for the adjusted common odds ratio at 90 days.

Figure S2 The forest plot displays effect variation across IV thrombolysis and Occlusion site subgroups for the adjusted common odds ratio at 90 days. Adjusted odds ratio (95% CI) > 3 indicated by arrows.

Figure S3 The forest plot displays effect variation across Onset to recanalization time and Ischemic stroke subgroups for the adjusted common odds ratio at 90 days. Adjusted odds ratio (95% CI) > 3 indicated by arrows.

Figure S4 The forest plot displays effect variation across Atrial fibrillation and mTICI subgroups for the adjusted common odds ratio at 90 days.

Figure S5 The forest plot displays effect variation Stroke causative mechanism subgroup for the adjusted common odds ratio at 90 days. Adjusted odds ratio (95% CI) > 3 indicated by arrows.

Figure S1 The forest plot displays effect variation across subgroups for the adjusted common odds ratio of less disability at 90 days as compared with the Cold group. The forest plot displays effect variation across Age and Sex subgroups for the adjusted common odds ratio at 90 days.

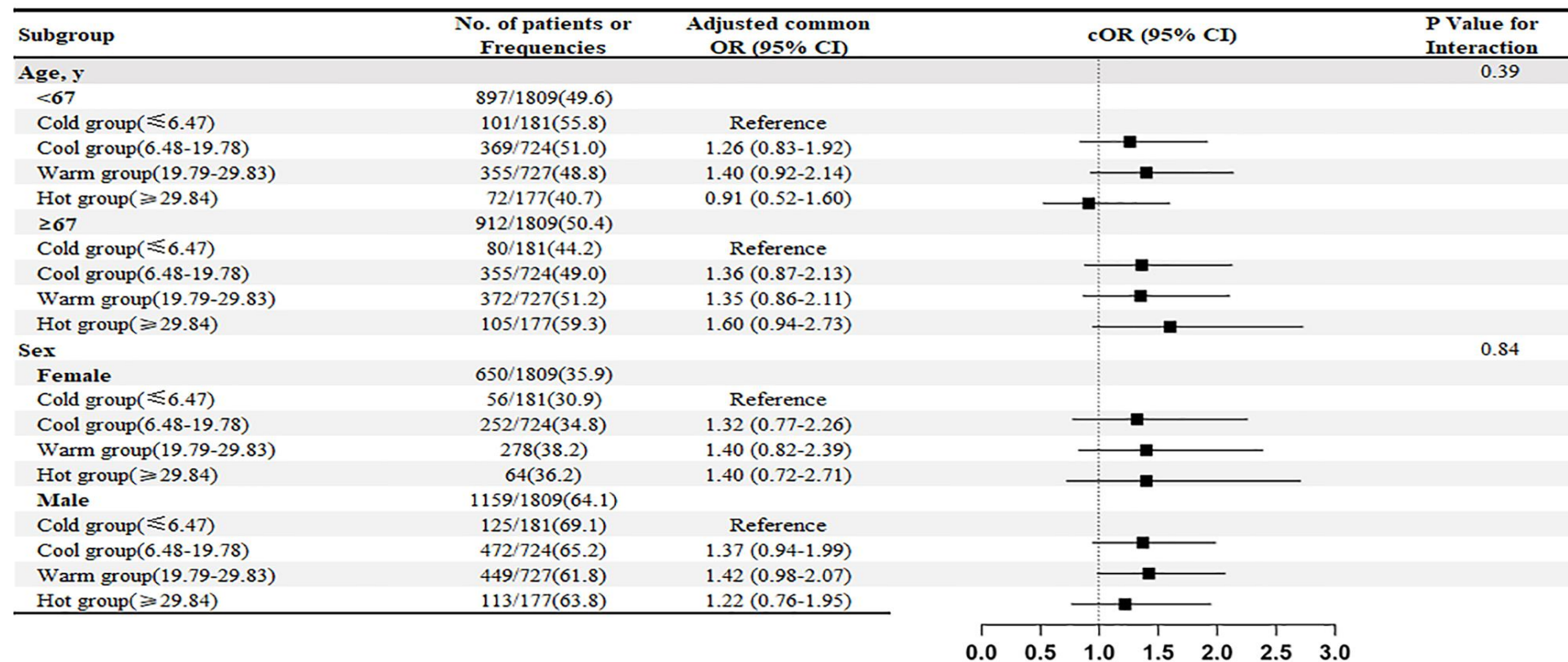


Figure S2 The forest plot displays effect variation across IV thrombolysis and Occlusion site subgroups for the adjusted common odds ratio at 90 days. Adjusted odds ratio (95% CI) > 3 indicated by arrows.

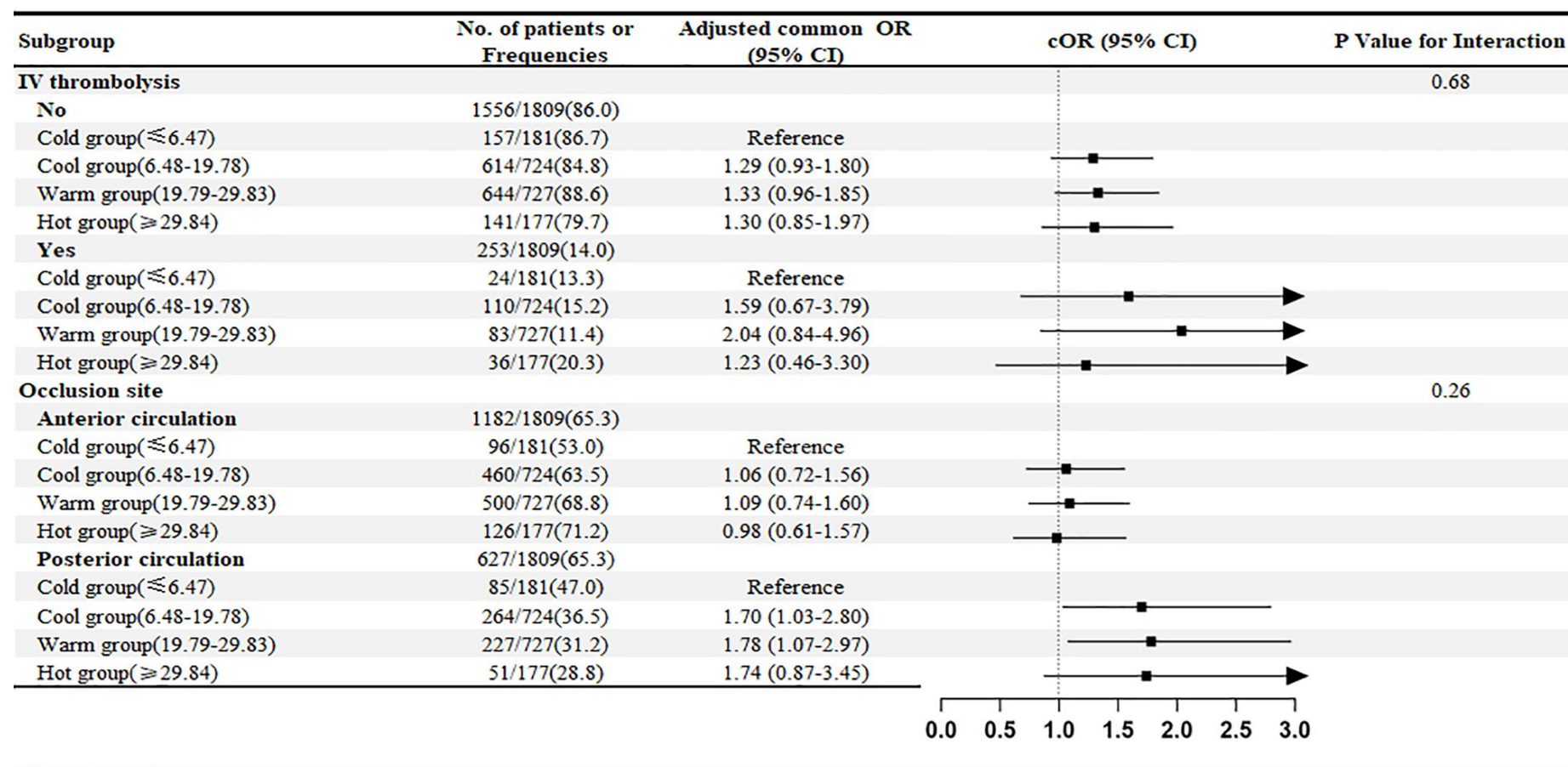


Figure S3 The forest plot displays effect variation across Onset to recanalization time and Ischemic stroke subgroups for the adjusted common odds ratio at 90 days. Adjusted odds ratio (95% CI) > 3 indicated by arrows.

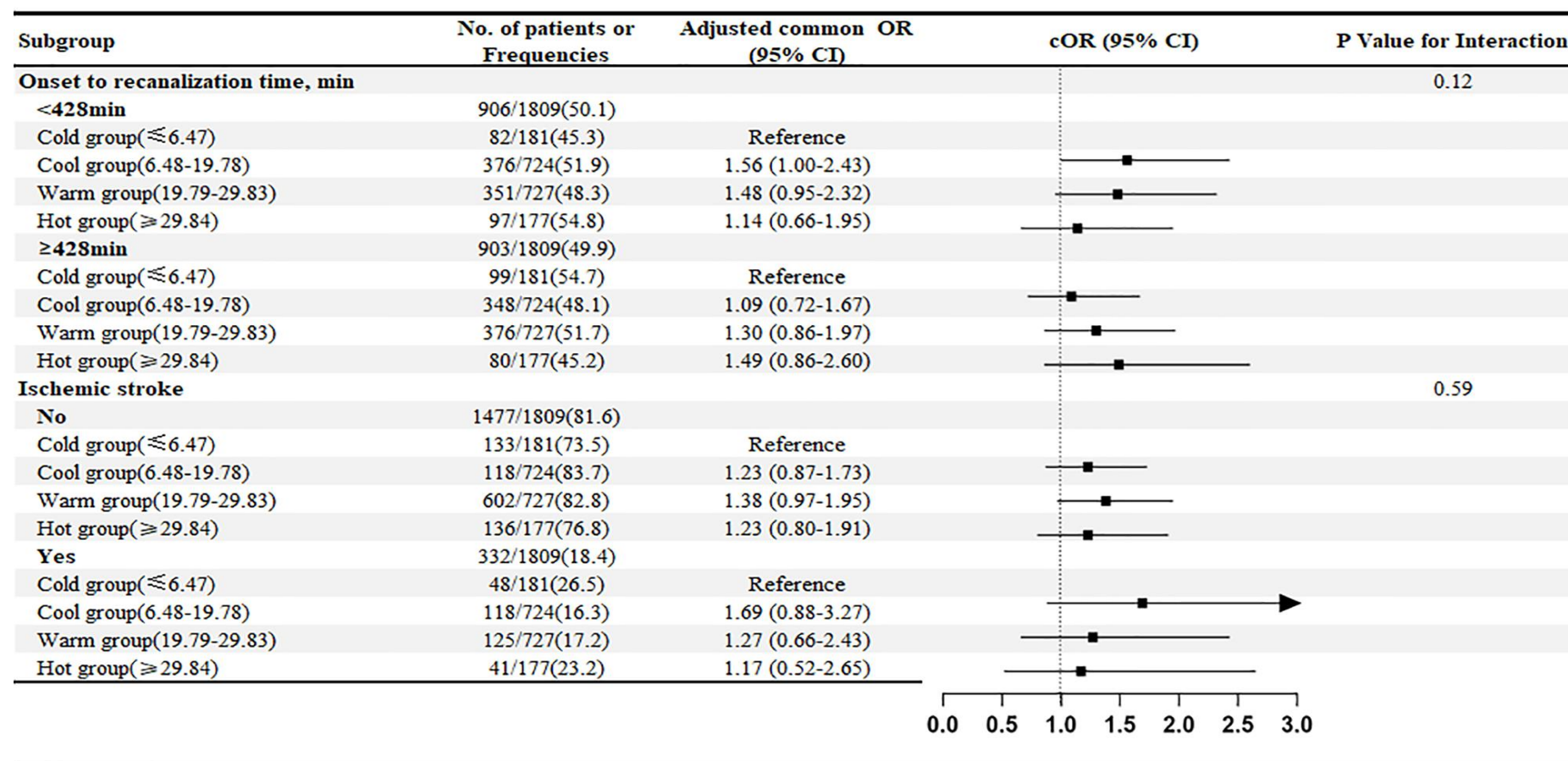


Figure S4 The forest plot displays effect variation across Atrial fibrillation and mTICI subgroups for the adjusted common odds ratio at 90 days.

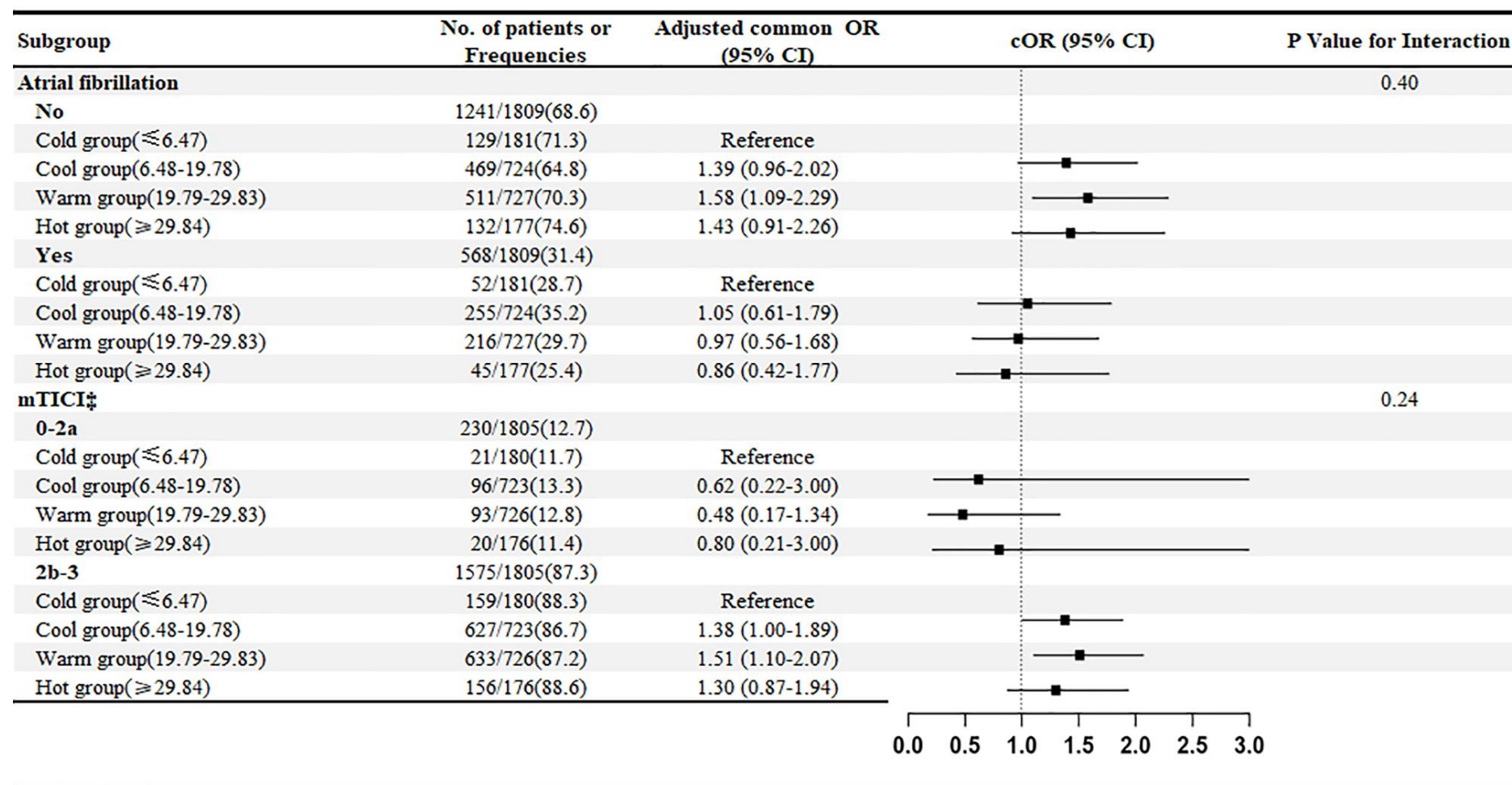


Figure S5 The forest plot displays effect variation Stroke causative mechanism subgroup for the adjusted common odds ratio at 90 days. Adjusted odds ratio (95% CI) > 3 indicated by arrows.

