

Supplementary Table and Figures

Usefulness of computed tomography for evaluating the effects of bronchial thermoplasty in Japanese patients with severe asthma

Sumiko Abe¹, Mina Yasuda^{1,2}, Kazunori Tobino^{1,2}, Sonoko Harada^{1,3}, Hitoshi Sasano¹, Yuki Tanabe¹, Yuuki Sandhu¹, Tomohito Takeshige¹, Kei Matsuno¹, Tetsuhiko Asao¹, Takuto Sueyasu², Saori Nishizawa², Kohei Yoshimine², Yuki Ko², Yuki Yoshimatsu², Kosuke Tsuruno², Hiromi Ide², Haruhi Takagi¹, Jun Ito¹, Tetsutaro Nagaoka¹, Norihiro Harada^{1,3,4,*}, and Kazuhisa Takahashi^{1,4}

¹ Department of Respiratory Medicine, Juntendo University Faculty of Medicine and Graduate School of Medicine, Tokyo, Japan

² Department of Respiratory Medicine, Iizuka Hospital, Fukuoka, Japan

³ Atopy (Allergy) Research Center, Juntendo University Faculty of Medicine and Graduate School of Medicine, Tokyo, Japan

⁴ Research Institute for Diseases of Old Age, Juntendo University Faculty of Medicine and Graduate School of Medicine, Tokyo, Japan

Supplementary Table 1.

The detection limits of the multiplex bead array assays and ELISA

Target	Assay working range	
	LLOQ	ULOQ
Periostin	0.0	2,000
Tenascin-C	380.0	24,000
Eotaxin-1	3.2	10,000
MIP-1 α	3.2	10,000
MCP-1	3.2	10,000
MIP-1 β	3.2	10,000

Abbreviations:

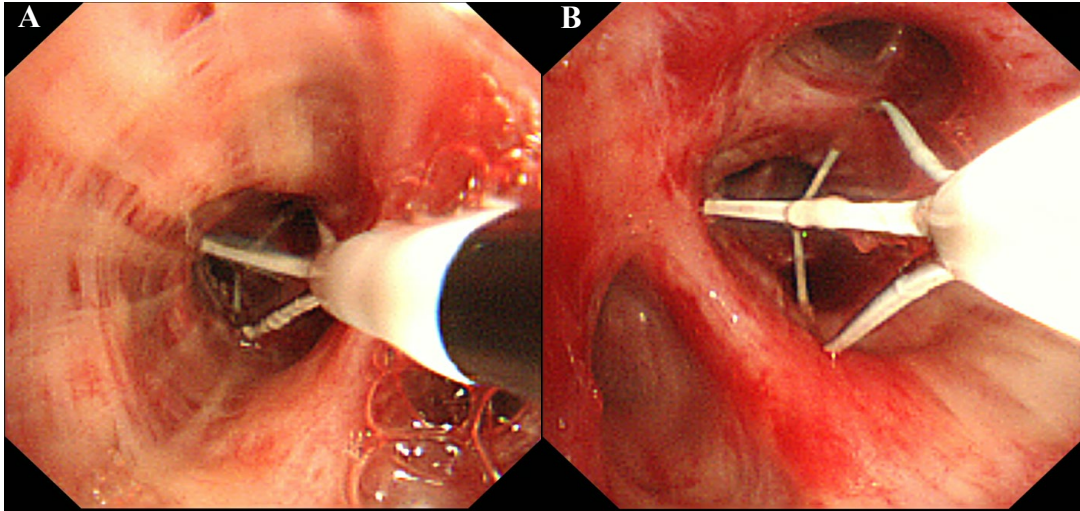
LLOQ, lower limit of quantitation;

ULOQ, upper limit of quantitation;

MIP, macrophage inflammatory protein;

MCP, monocyte chemotactic protein

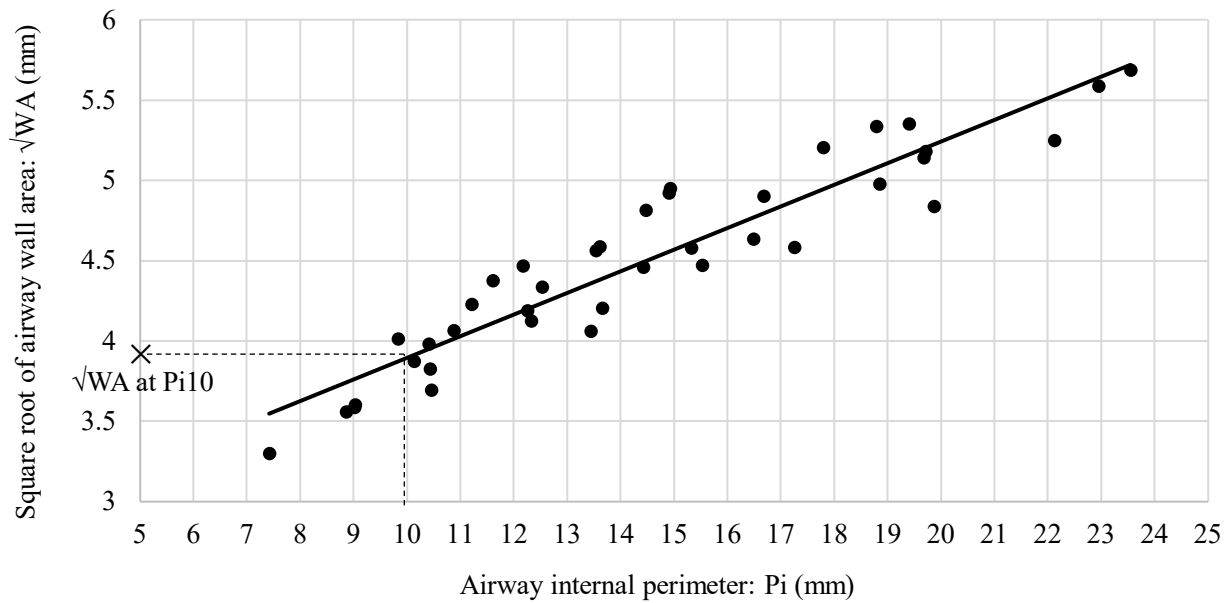
Supplementary Figure 1.



Supplementary figure 1. Actual Bronchial Thermotherapy images.

A and B; Images of the right upper lobe bronchus and right lower lobe bronchus undergoing BT, respectively.

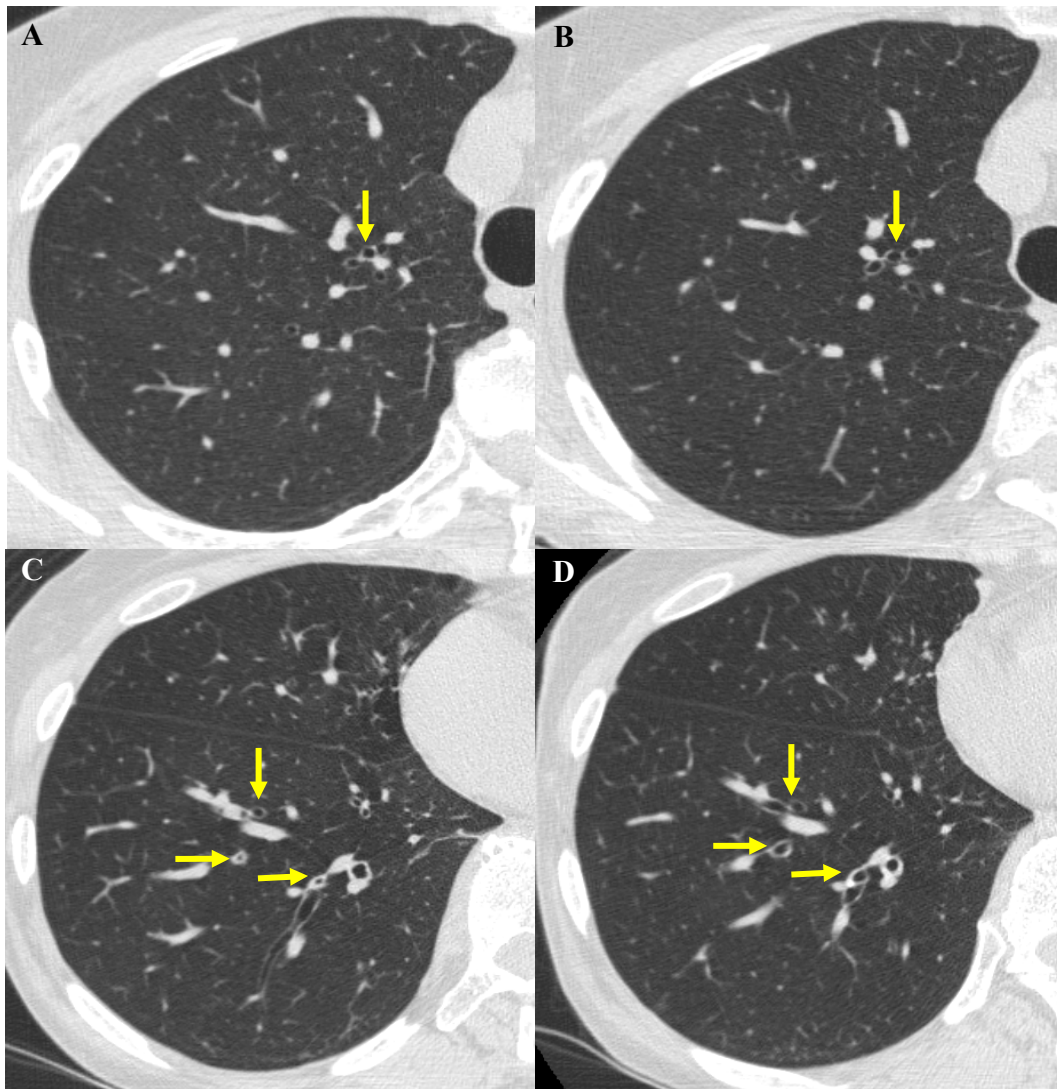
Supplementary Figure 2.



Supplementary figure 2. The relationships between airway internal perimeter (Pi) and square root of airway wall area (WA) measured by CT.

Pi and WA were investigated for all airways visible on each patient's CT images, and the square root of WA (\sqrt{WA}) was plotted against Pi. Finally, the regression line of this plot was used to determine the \sqrt{WA} of a 'theoretical airway' with a 10 mm inner circumference, defined as \sqrt{WA} at Pi10 (\times).

Supplementary Figure 3.



Supplementary figure 3. CT images before and after BT.

A and B; CT images of the right upper lobe bronchus (arrows) before and 12 months after BT in the same patient, respectively. C and D; CT images of the right lower lobe bronchus (arrows) before and 12 months after BT in the same patient, respectively. Both the right upper lobe and right lower lobe bronchi have thinner walls and dilated lumens 12 months after BT.