

**Supplementary Figure S1** Differential expression analysis of PSMC1 (A), PSMC2 (B), PSMC3 (C), PSMC4 (D), PSMC5 (E), and PSMC6 (F) in normal liver tissues compared to HCC tissues from HCC patients with different aetiologies in TCGA. HCC: Hepatocellular carcinoma, PSMC: Proteasome 26S Subunit, ATPase, TCGA: The Cancer Genome Atlas database.

**Supplementary Figure S2** The magnified immunohistochemical images indicating the intracellular localization of PSMC1 (A), PSMC2 (B), PSMC3 (C), PSMC4 (D), PSMC5 (E), and PSMC6 (F) in HCC tissues. All representative IHC staining images are from the HPA server. PSMC: Proteasome 26S Subunit, ATPase, HCC: Hepatocellular carcinoma, IHC: Immunohistochemistry, HPA: Human Protein Atlas.

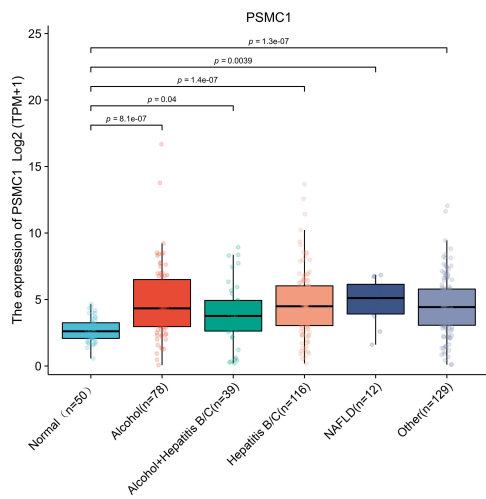
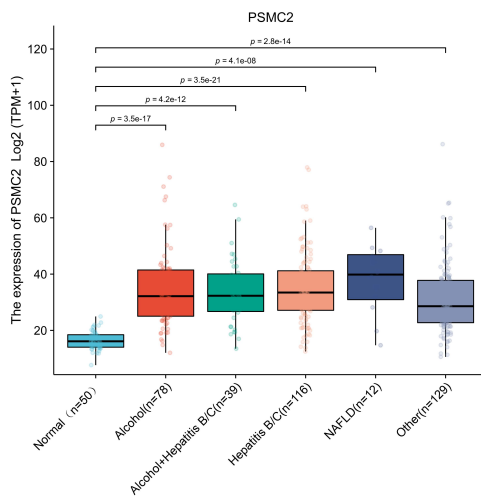
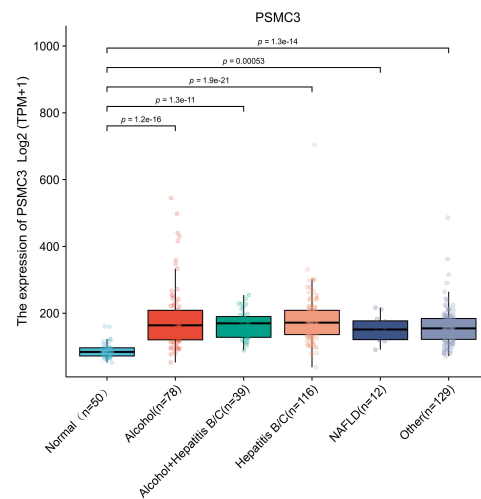
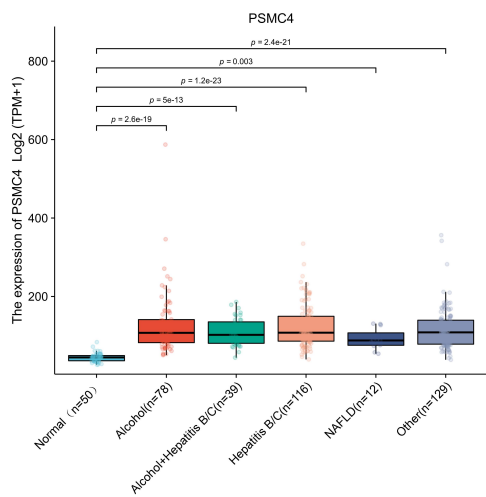
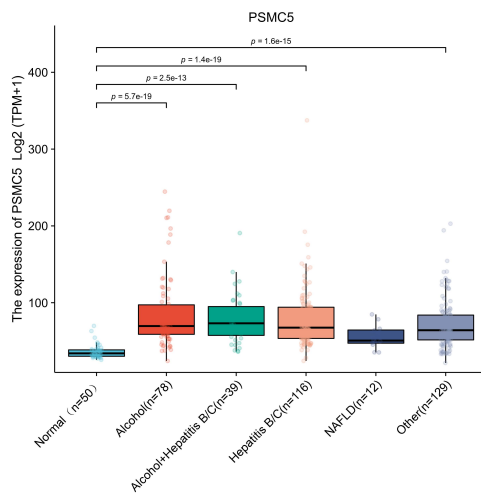
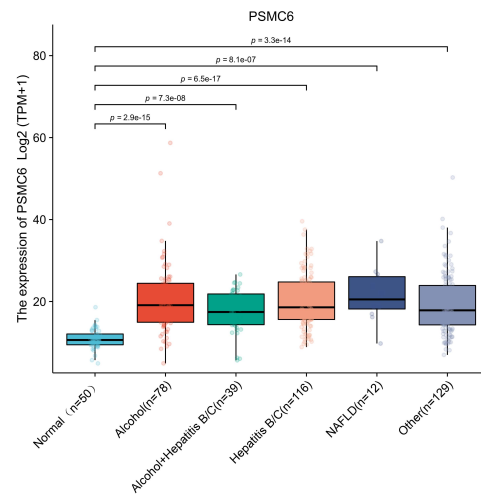
**Supplementary Figure S3** The diagnostic value of PSMC1 (A), PSMC2 (B), PSMC3 (C), PSMC4 (D), PSMC5 (E), and PSMC6 (F) for identifying individuals with HCC in the TCGA cohort. HCC: Hepatocellular carcinoma, PSMC: Proteasome 26S Subunit, ATPase, TCGA: The Cancer Genome Atlas database.

**Supplementary Figure S4** The associations between PSMC gene expression levels in HCC tissues and pathologic T stage (A-F), pathologic stage (G-L), and histologic grade (M-R) in the TCGA-HCC cohort. HCC: Hepatocellular carcinoma, PSMC: Proteasome 26S Subunit, ATPase, TCGA: The Cancer Genome Atlas database.

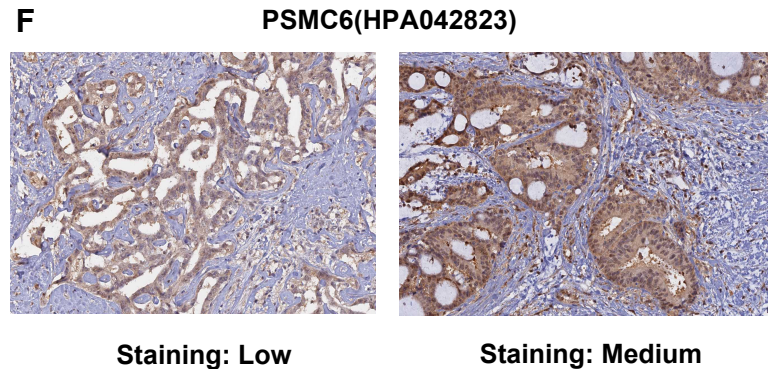
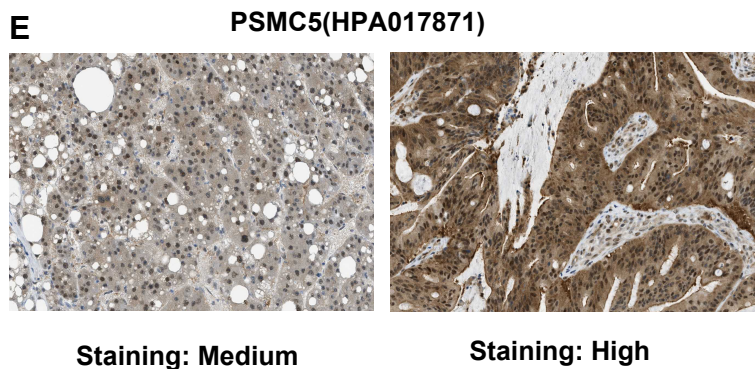
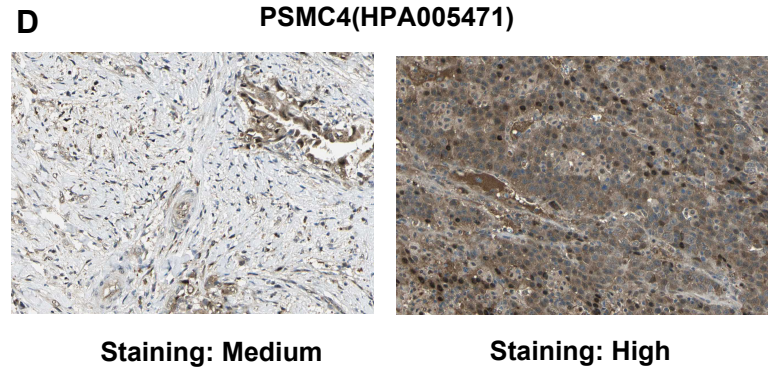
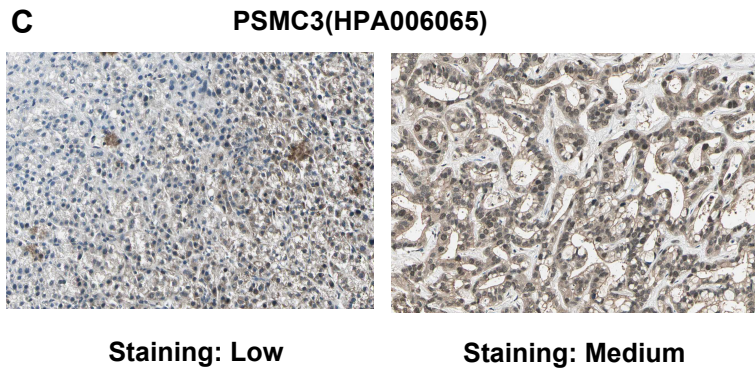
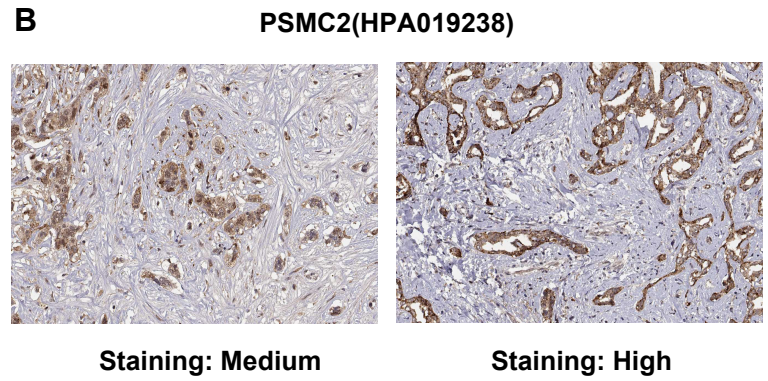
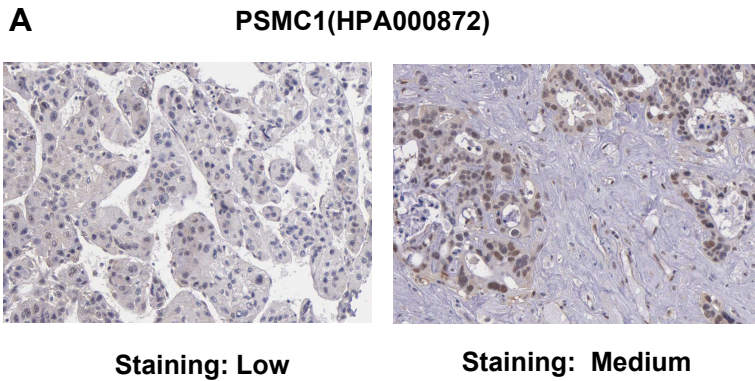
**Supplementary Figure S5** Survival curves of DSS and PFI in the TCGA-HCC cohort: between PSMC1-high and -low patients with HCC (A, B), between PSMC2-high and -low patients with HCC(C, D), between PSMC3-high and -low patients with HCC(E, F), between PSMC4-high and -low patients with HCC(G, H), between PSMC5-high and -low patients with HCC(I, J), between PSMC6-high and -low patients with HCC(K, L).DSS: Disease-specific survival, PFI: Progress-free interval, HCC: Hepatocellular carcinoma, PSMC: Proteasome 26S Subunit, ATPase, TCGA: The Cancer Genome Atlas database.

**Supplementary Figure S6** Kaplan-Meier survival curves of overall survival in the TCGA-HCC cohort: between ATP5PD-high and -low patients with HCC (A), between PMPCB-high and -low patients with HCC(B), between PSMA3-high and -low patients with HCC(C), between PSMD13-high and -low patients with HCC(D), between SLIRP-high and -low patients with HCC(E), between TIMM50-high and -low patients with HCC(F). HCC: Hepatocellular carcinoma, TCGA: The Cancer Genome Atlas database.

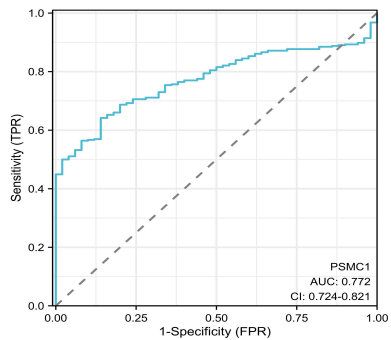
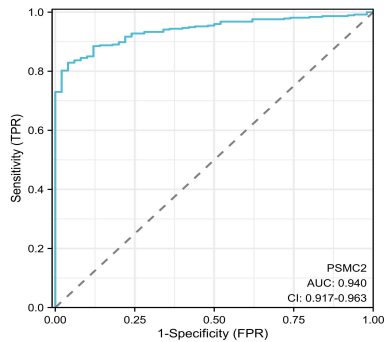
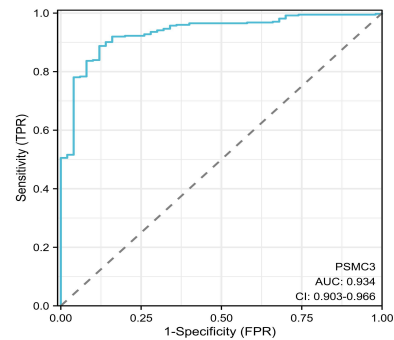
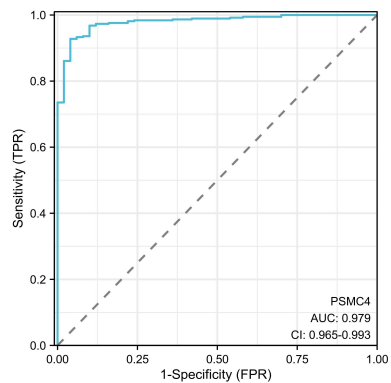
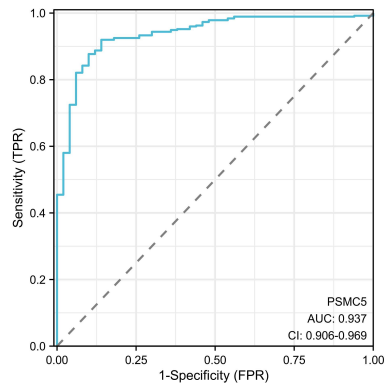
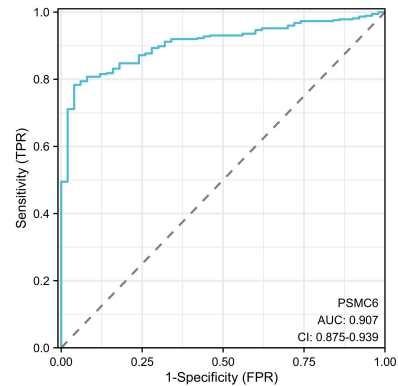
# Supplementary Figure S1

**A****B****C****D****E****F**

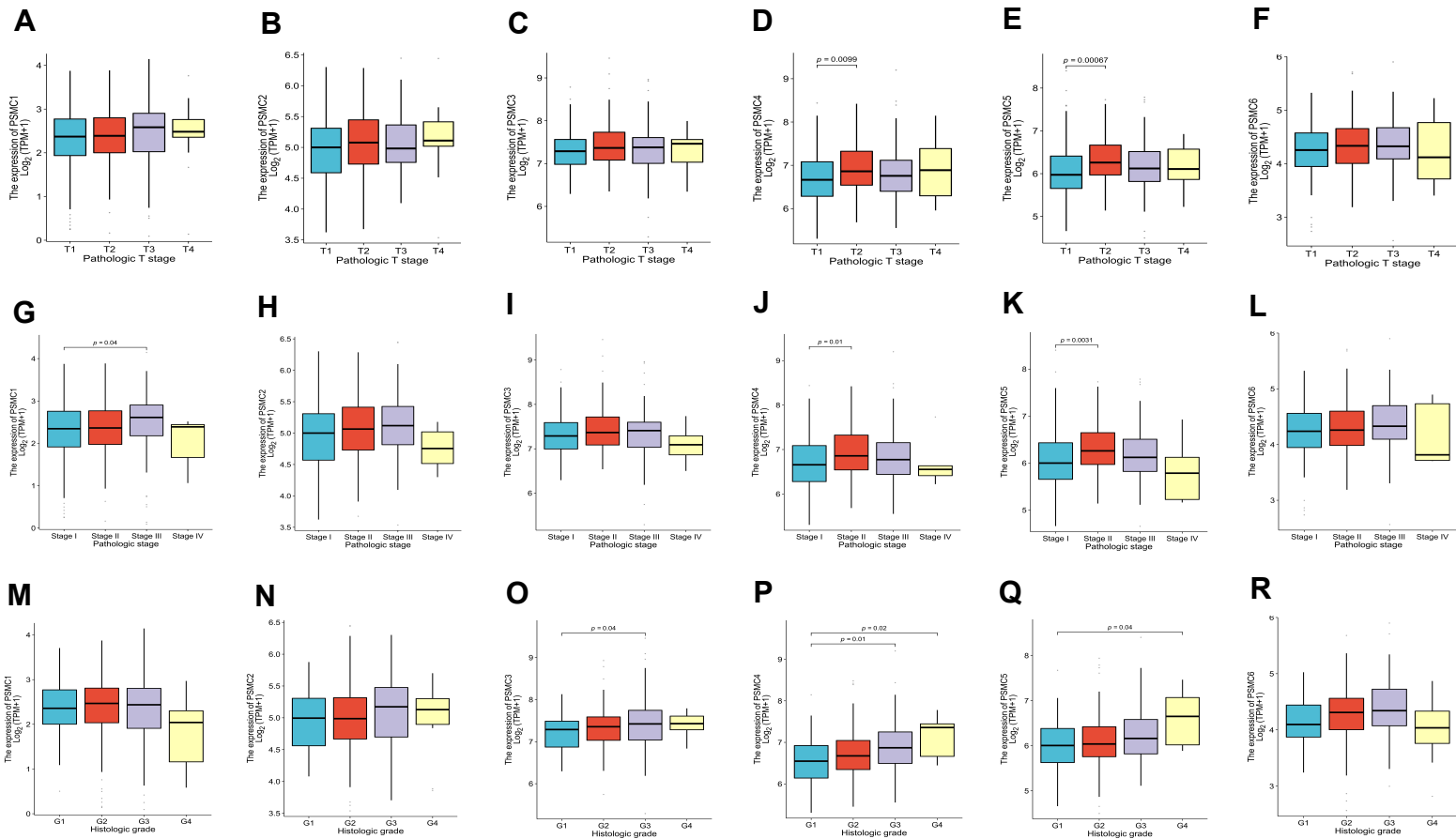
# Supplementary Figure S2



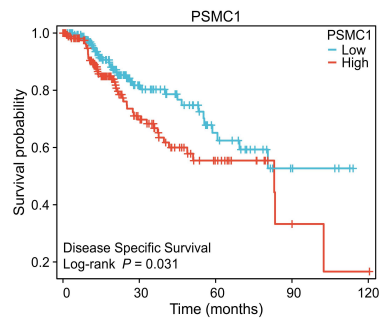
# Supplementary Figure S3

**A****B****C****D****E****F**

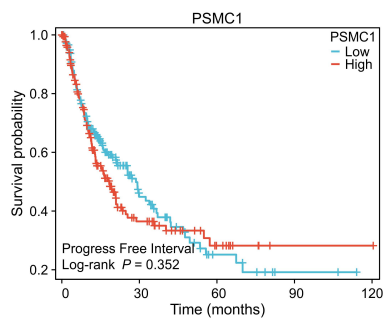
# Supplementary Figure S4



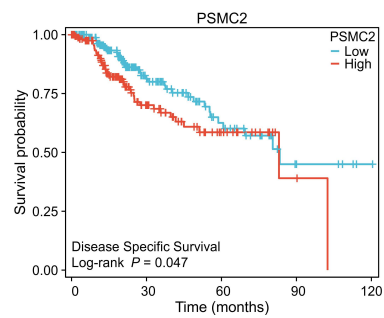
# Supplementary Figure S5

**A**


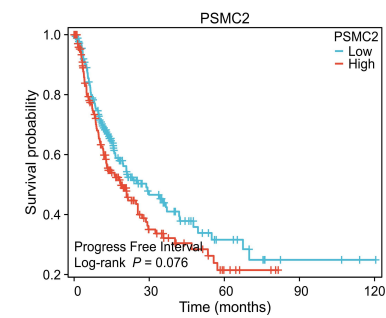
Low	183	58	24	5	0
High	182	52	19	3	1

**B**


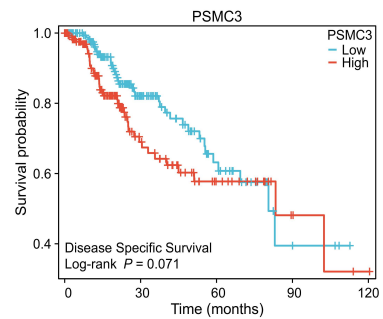
Low	186	34	9	2	0
High	187	29	9	1	1

**C**


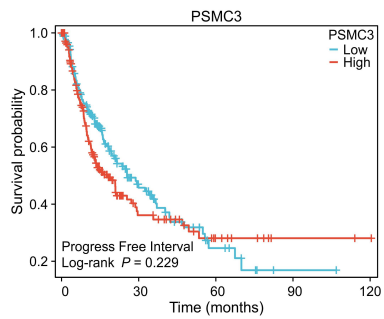
Low	182	62	26	6	1
High	183	48	17	2	0

**D**


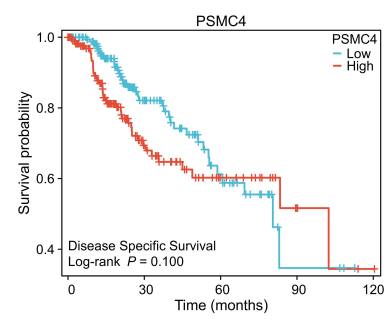
Low	187	37	12	3	1
High	186	26	6	0	0

**E**


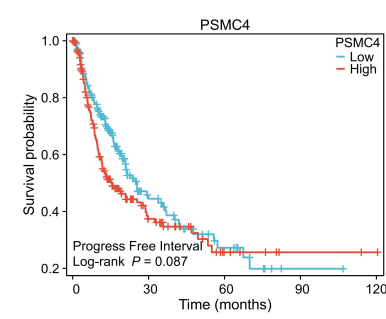
Low	185	65	26	4	0
High	180	45	17	4	1

**F**


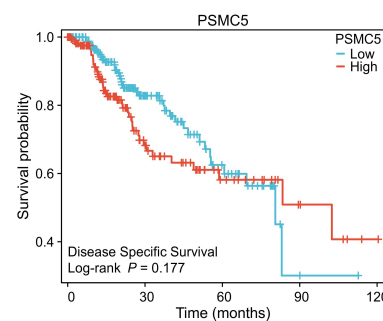
Low	187	37	9	1	0
High	186	26	9	2	1

**G**


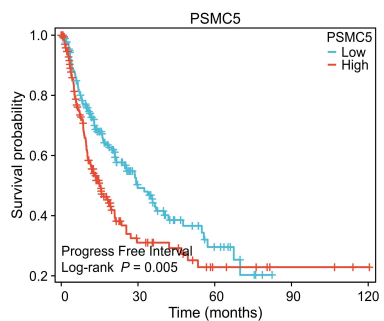
Low	183	63	25	3	0
High	182	47	18	5	1

**H**


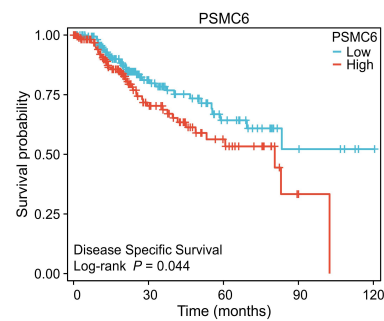
Low	187	33	11	1	0
High	186	30	7	2	1

**I**


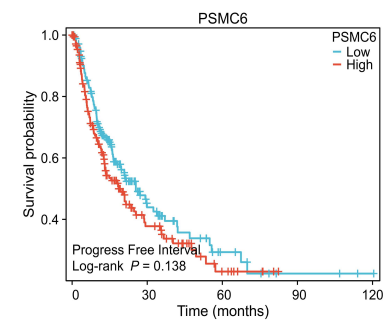
Low	185	65	24	2	0
High	180	45	19	6	1

**J**


Low	187	42	11	0	0
High	186	21	7	3	1

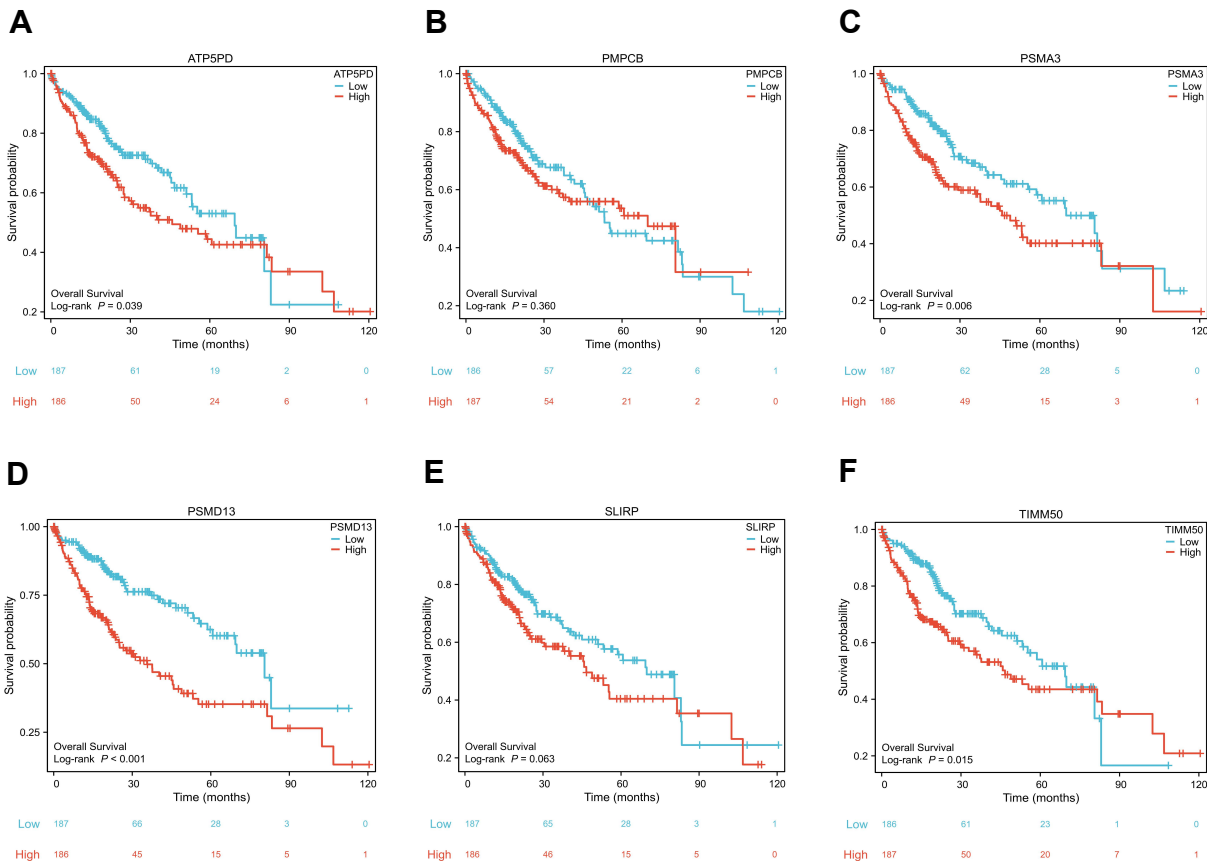
**K**


Low	184	61	24	6	1
High	181	49	19	2	0

**L**


Low	187	32	10	3	1
High	186	31	8	0	0

# Supplementary Figure S6



Supplementary Table 1 The primer sequences of PSMCs

<b>Genes</b>	<b>Forward Primer(5' -&gt; 3')</b>	<b>Reverse Primer(5' -&gt; 3')</b>
PSMC1	CACACTCAGTGCCGGTTAAAA	GTAGACACGATGGCATGATTGT
PSMC2	GAGCACTTACTCTAGGCAGATCA	GTACACCTGGCAACCTGTAAAG
PSMC3	CGAGCAAGATGGAATTGGGGA	GCTCATGGGTGACTCTCAACA
PSMC4	CCGCTGGTCATCGGACAATTT	GCGCACATAATAGTTGGAGCCT
PSMC5	AGGCACAGAGGAACGAACTAA	AGGATGTACCTTGACCAACACTT
PSMC6	ATATGTTGTGGGTTGTCGTCG	TCTGTTCTGATAGCCCTCCAAT