

Supplemental Material

Table S1 Trend test between LCR level and incidence of NOAF

	NOAF after PCI			
	Cases/Overall (%)	OR	95% CI	P-value
LCR median (range)				
0.045 (<0.137)	45/165 (27.3%)	Reference		
0.264 (0.137-0.434)	24/166 (14.5%)	0.451	0.260-0.783	0.005
0.691 (0.434-1.207)	10/166 (6.0%)	0.171	0.083-0.353	< 0.001
2.000 (> 1.207)	5/165 (3.0%)	0.083	0.032-0.216	< 0.001
P for trend	< 0.001			

Abbreviations: LCR, lymphocyte to C-reactive protein ratio; NOAF, new onset atrial fibrillation; PCI, percutaneous coronary intervention; OR, odds ratio; CI, confidence interval

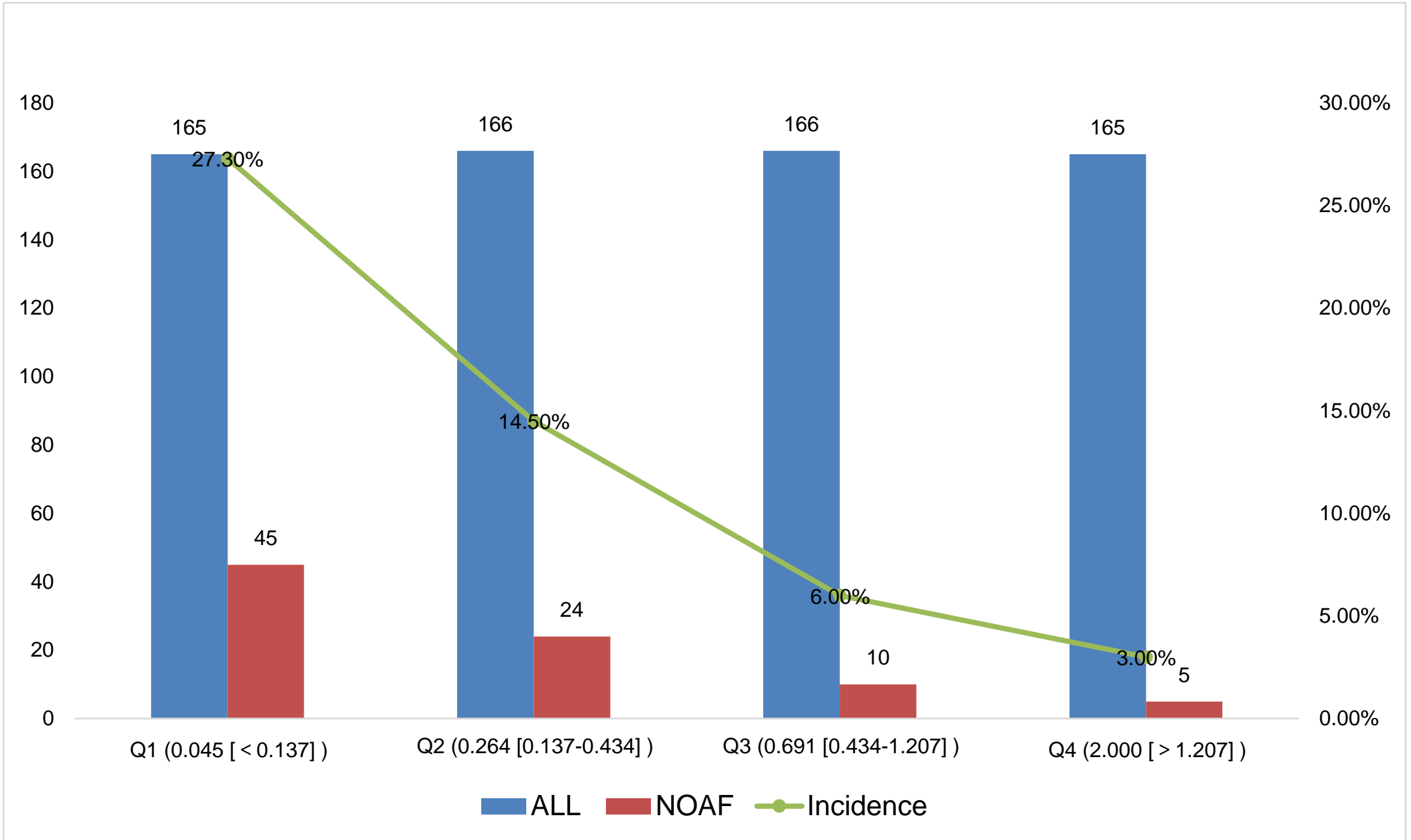


Figure S1 Visualization graph of trend test. NOAF, new onset atrial fibrillation