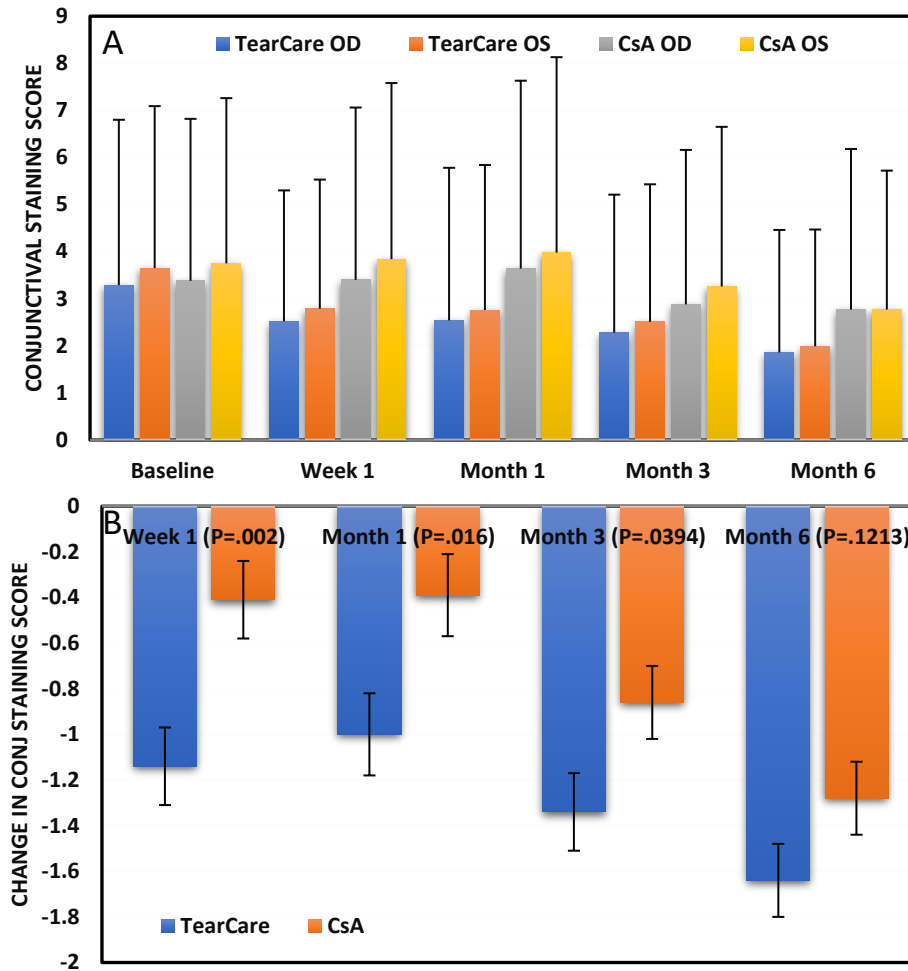
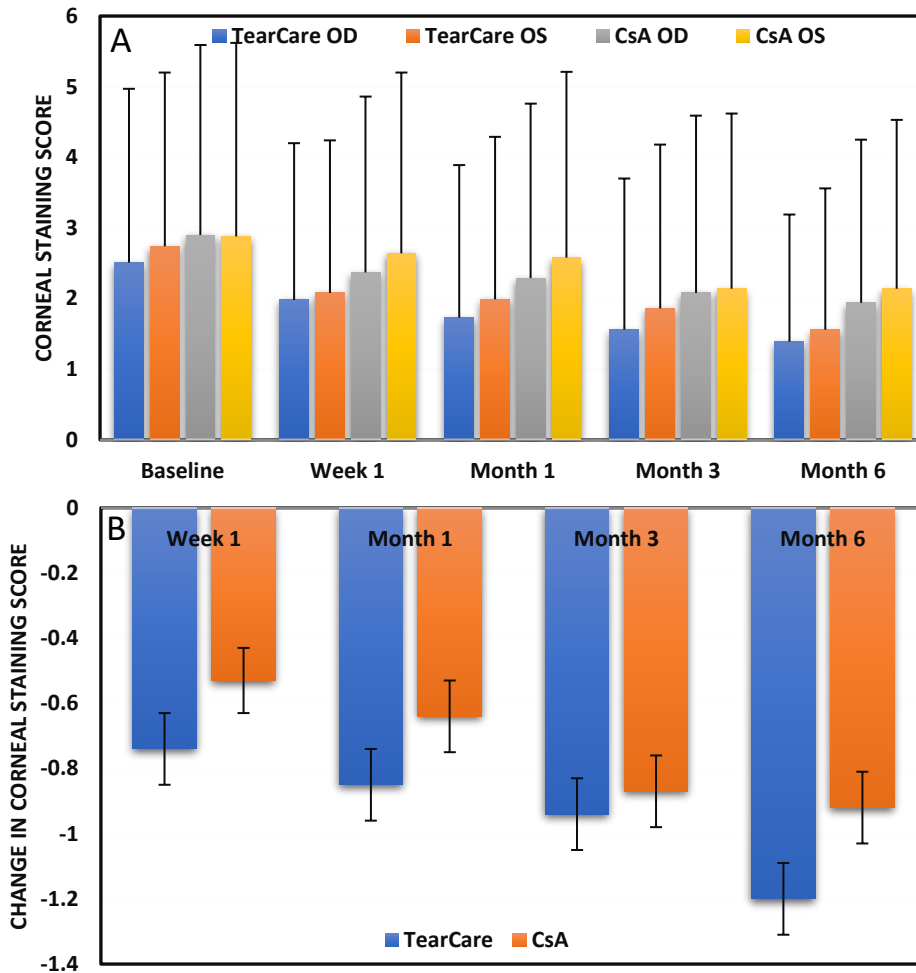


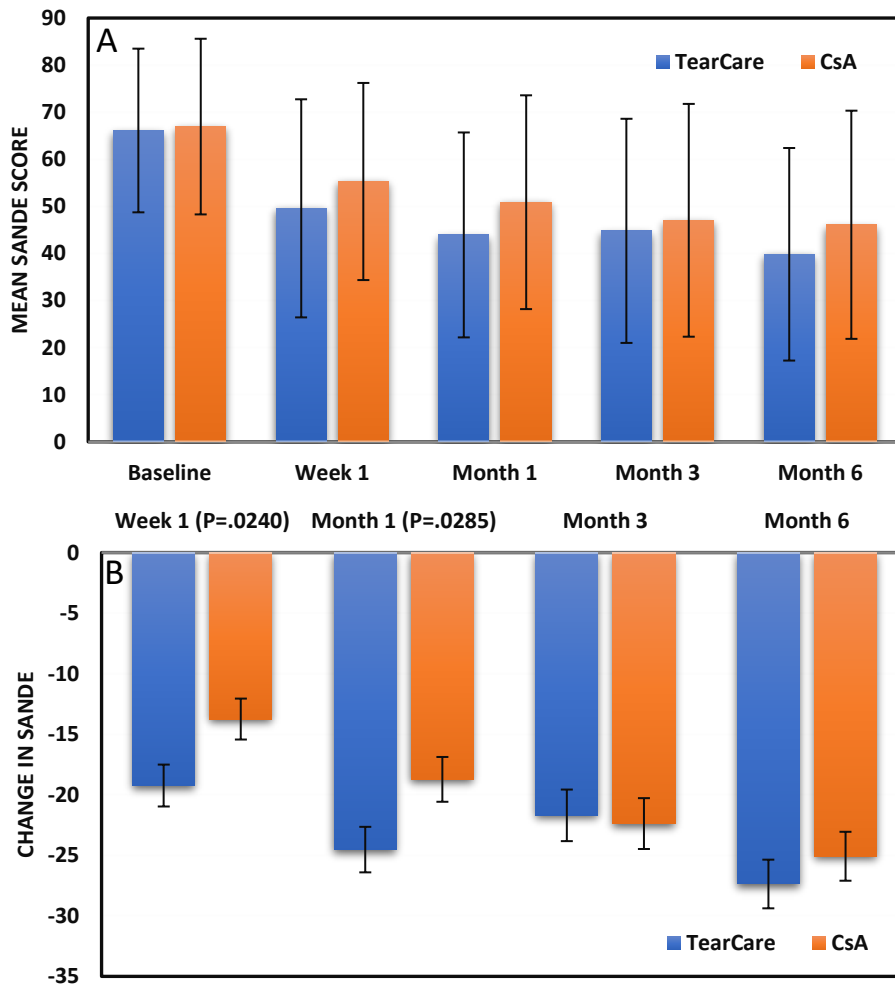
Supplemental Figure 1. Conjunctival Staining Score analyses. A, mean values at each time point by study group. B, least-squares mean changes from baseline at each time point by treatment group (linear mixed effects models). OD, right eye; OS, left eye; CsA, cyclosporine ophthalmic emulsion 0.05% (Restasis). Error bars are one standard deviation (A), or \pm least squares standard error (B).



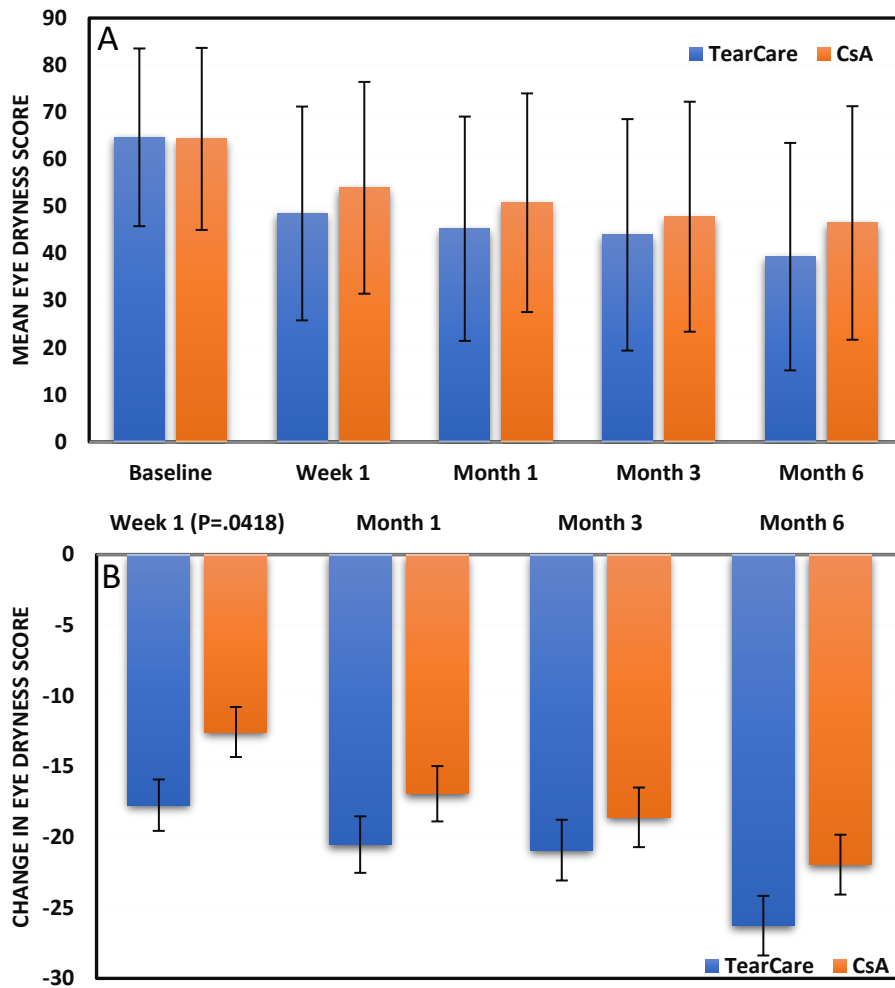
Supplemental Figure 2. Corneal Staining Score analyses. A, mean values at each time point by study group. B, least-squares mean changes from baseline at each time point by treatment group (linear mixed effects models). OD, right eye; OS, left eye; CsA, cyclosporine ophthalmic emulsion 0.05% (Restasis). Error bars are one standard deviation (A), or \pm least squares standard error (B).



Supplemental Figure 3. SANDE Score analyses. A, mean values at each time point by study group. B, least-squares mean changes from baseline at each time point by treatment group (ANCOVA model). CsA, cyclosporine ophthalmic emulsion 0.05% (Restasis). Error bars are \pm one standard deviation (A), or \pm least squares standard error (B).



Supplemental Figure 4. Eye Dryness Score (EDS) analyses. A, mean values at each time point by study group. B, least-squares mean changes from baseline at each time point by treatment group (ANCOVA model). CsA, cyclosporine ophthalmic emulsion 0.05% (Restasis). Error bars are \pm one standard deviation (A), or \pm least squares standard error (B).



Supplemental Figure 5. Schirmer Tear Score (STS) analyses. A, mean values at each time point by study group. B, least-squares mean changes from baseline at each time point by treatment group (linear mixed effects models). OD, right eye; OS, left eye; CsA, cyclosporine ophthalmic emulsion 0.05% (Restasis). Error bars are \pm one standard deviation (A), or \pm least squares standard error (B).

