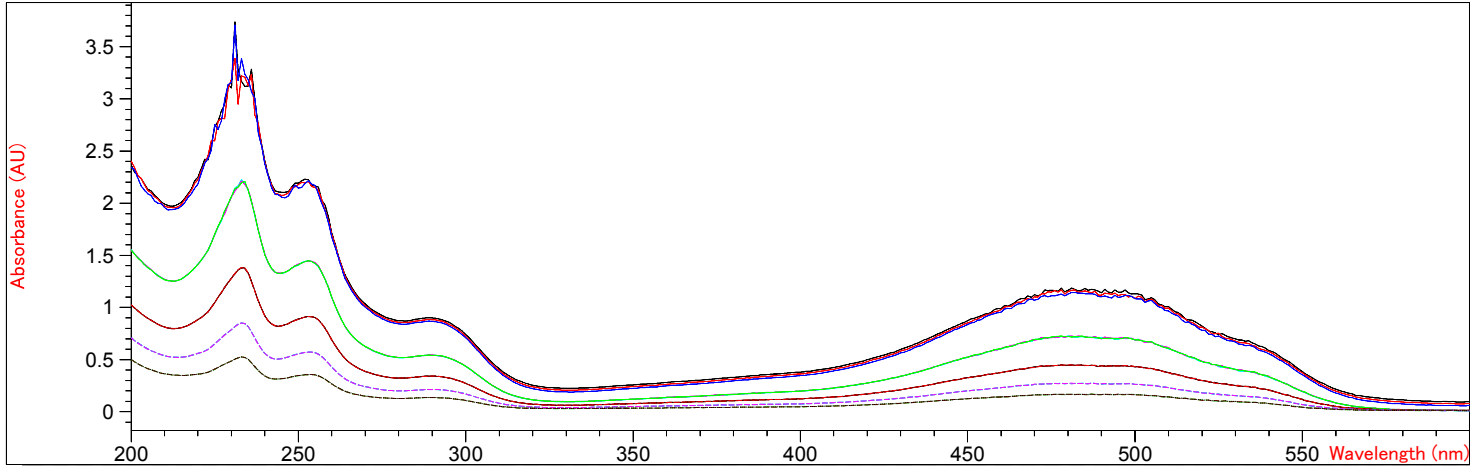


Method file : <method not saved>
 Information : Default Method
 Data File : D:\GFF\20231123 AMEISUBIAOQU.SD Created : 11/23/23 15:42:54

Overlaid Spectra:



#	Name	Abs<480nm>	#	Name	Abs<480nm>
1	0.06	1.16510	9		0.44811
2		1.15380	10	0.01296	0.27274
3		1.12980	11		0.27363
4	0.036	0.72642	12		0.27449
5		0.72424	13	0.00776	0.16771
6		0.72307	14		0.16849
7	0.0216	0.44564	15		0.16731
8		0.44485			

Report generated by : admin

Signature:

*** End Fixed Wavelength Report ***

Figure S1. UV absorption spectra of DOX solutions with different concentrations in the wavelength range of 200-600nm when making standard curves.

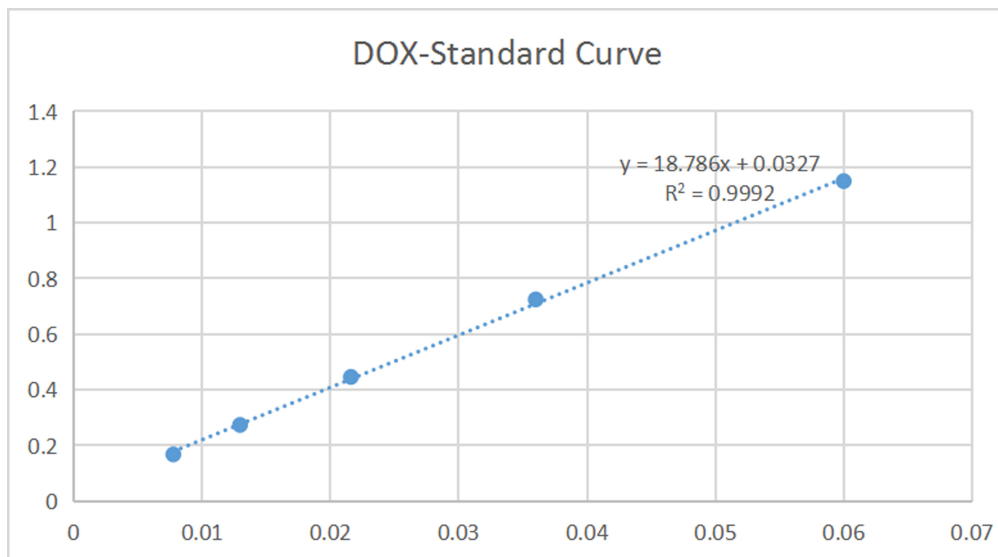
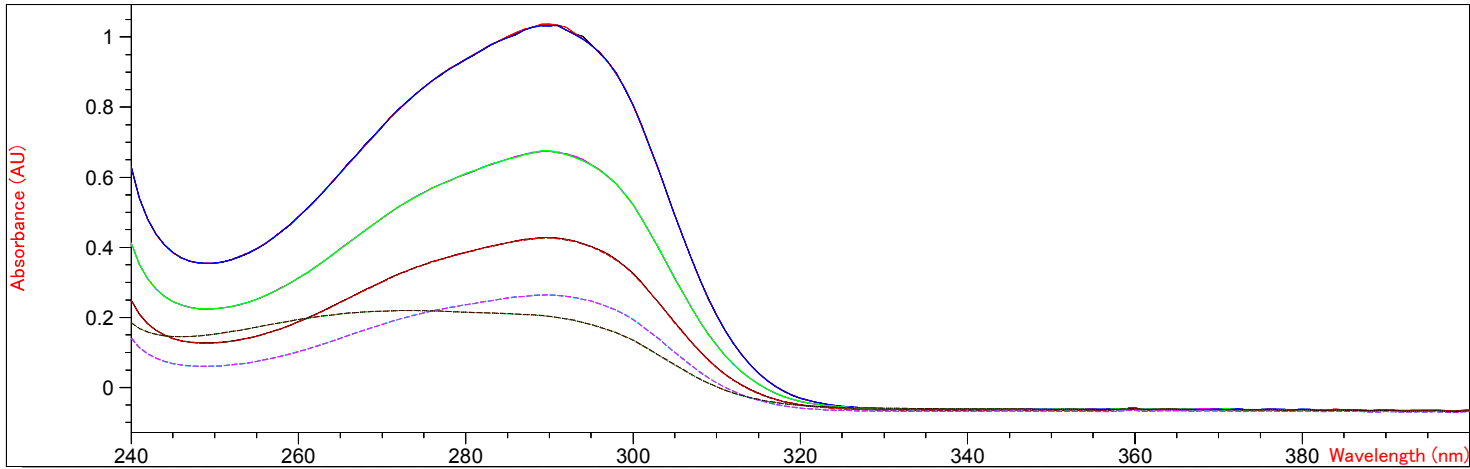


Figure S2. The standard curve of DOX.

Method file : <method not saved>
 Information : Default Method
 Data File : <data not saved>

Overlaid Spectra:



#	Name	Abs<290nm>	#	Name	Abs<290nm>
1		1.03420	9		0.42709
2		1.03770	10		0.26443
3		1.03170	11		0.26486
4		0.67538	12		0.26395
5		0.67448	13		0.20343
6		0.67521	14		0.20310
7		0.42825	15		0.20244
8		0.42738			

Report generated by : admin

Signature:

*** End Fixed Wavelength Report ***

Figure S3. Uv absorption spectra of 1-MT solutions with different concentrations in the wavelength range of 240-400nm when making standard curves.

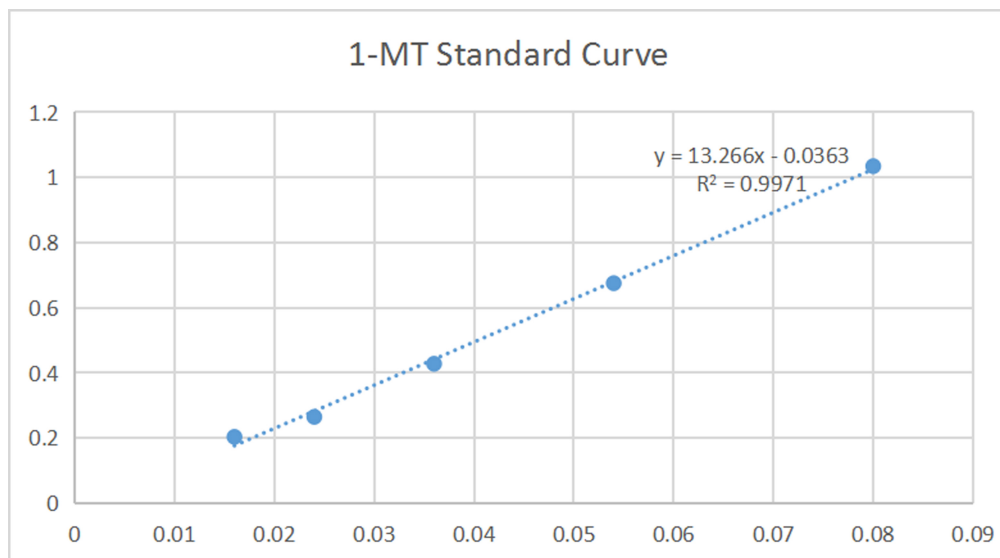
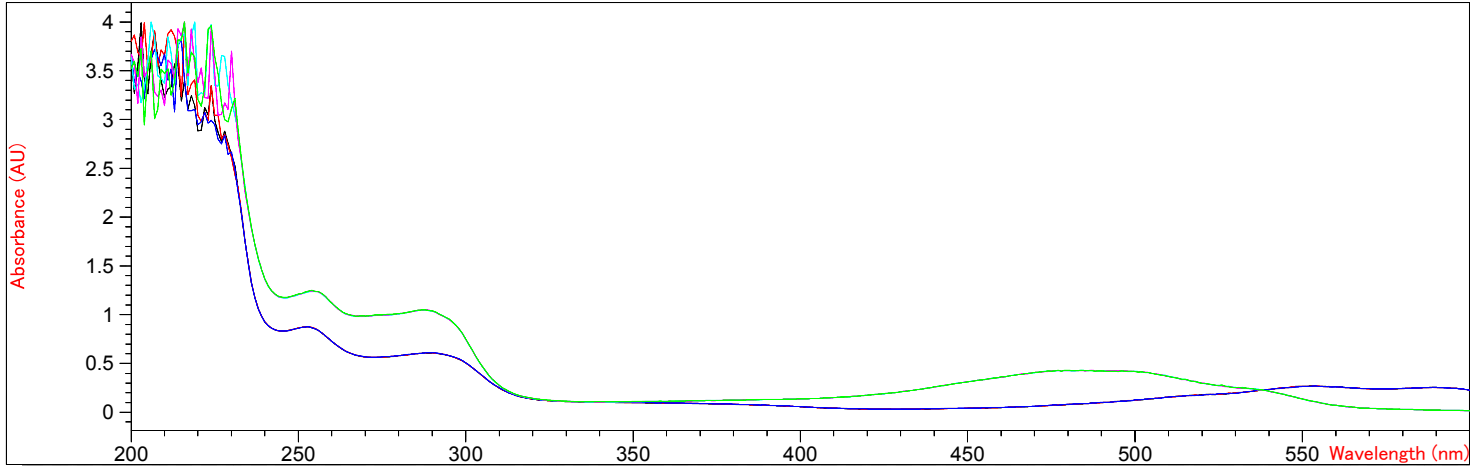


Figure S4. The standard curve of 1-MT.

Method file : <method not saved>
 Information : Default Method
 Data File : D:\GFF\DOX-1-MT EXP-2.SD Created : 11/23/23 19:44:13

Overlaid Spectra:



#	Name	Abs<290nm>	Abs<480nm>
1	drug export-1-MT	0.60783	7.9755E-2
2	drug export-1-MT	0.60862	8.1250E-2
3	drug export-1-MT	0.60959	8.1372E-2
4	drug export-DOX	1.03700	0.42814
5	drug export-DOX	1.03840	0.42779
6	drug export-DOX	1.04090	0.42914

Report generated by : admin

Signature:

*** End Fixed Wavelength Report ***

Figure S5. Uv absorption spectra of DOX and 1-MT Determination of solubility of supernatant in the wavelength range of 200-600nm.

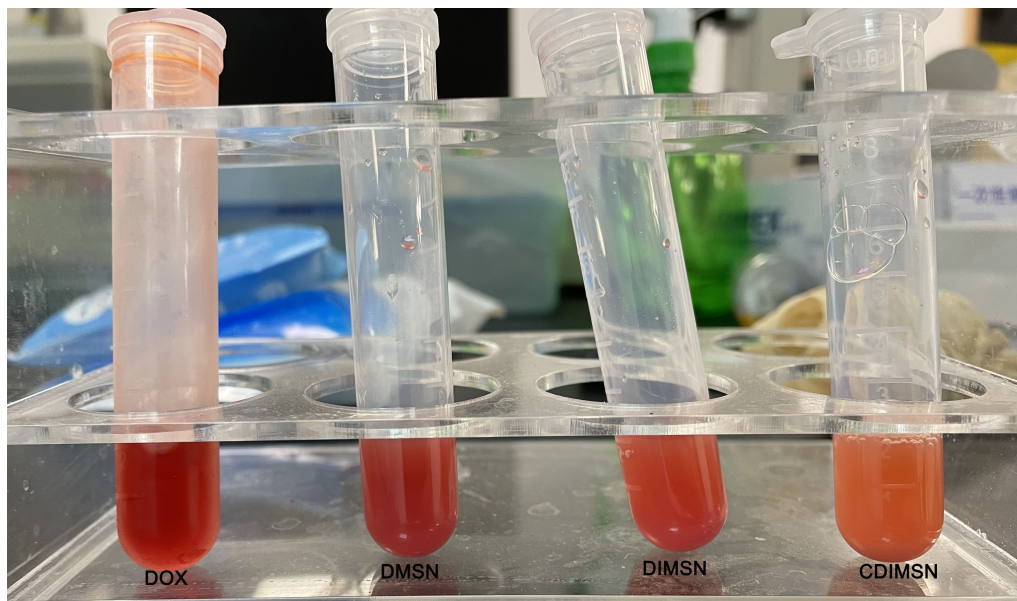


Figure S6. The solution appearance of DOX, DMSN, DIMSN and CDIMSN.

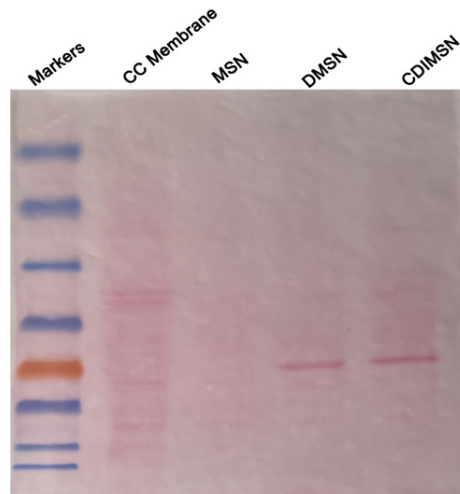


Figure S7. Western blot analysis protein of Tumor cell membrane and CDIMSN.