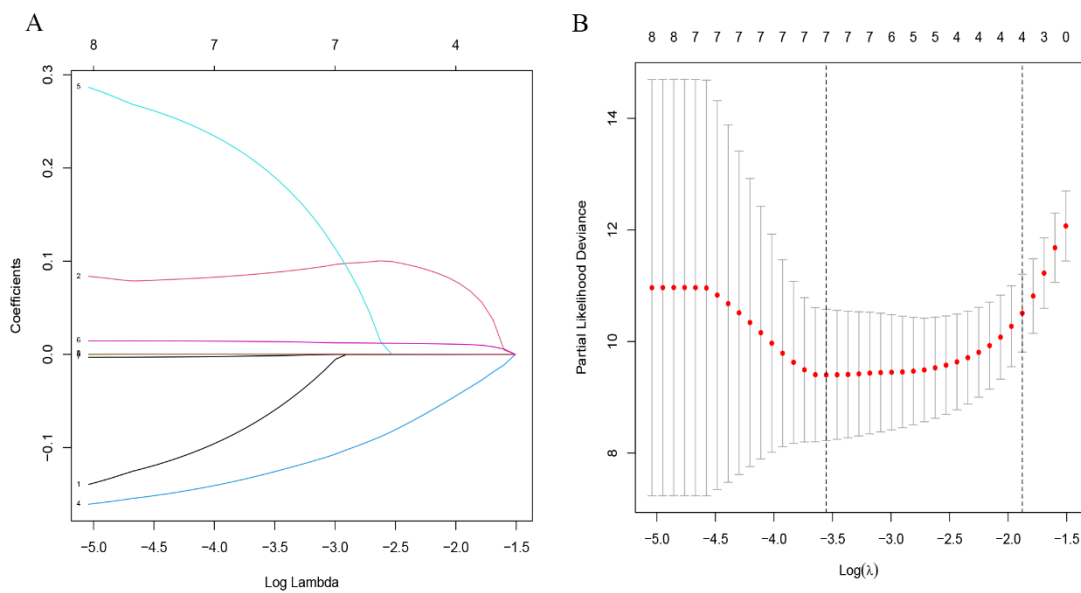
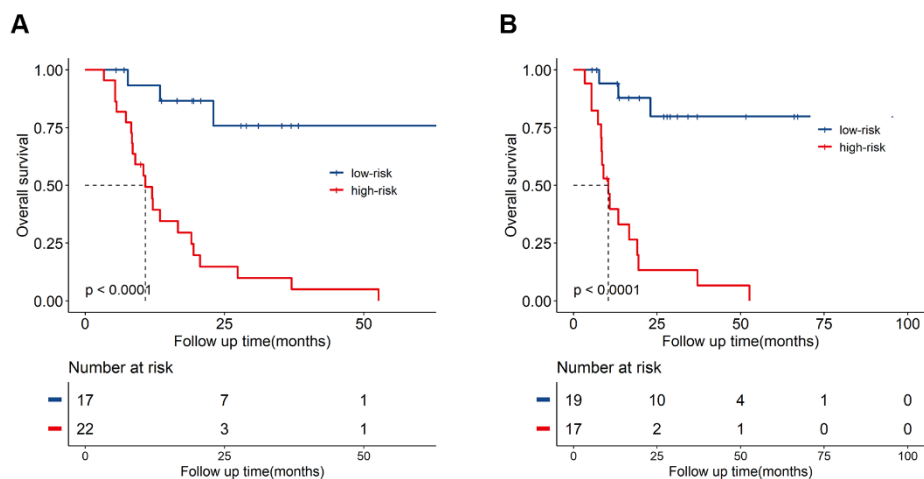


Supplemental Material



Supplementary Figure 1: Construction of the INPS using LASSO Cox regression model. (A) LASSO coefficient profiles of the inflammatory- nutritional biomarkers. (B) Ten-fold cross validation for tuning parameter selection in the LASSO model. The dotted vertical lines were drawn at the optimal values by minimum criteria and 1-SE criteria. Herein, we choose the minimum criteria.



Supplementary Figure 2: Overall survival curves obtained with Kaplan-Meier analysis between different INPS groups in high-risk group among the training cohort. (A) Survival curves in the high-risk IPI group. (B) Survival curves in the high-risk NCCN-IPI group.

Abbreviations: INPS, inflammatory-nutritional prognostic scoring; IPI, International Prognostic Index; NCCN, National Comprehensive Cancer Network.