

Figure S1. Correlation analysis of the top 6 positively correlated genes of KRT19. (A) KRT19P1, (B) KRT15, (C) KRT7, (D) S100A14, (E) ELF3, (F) PERP

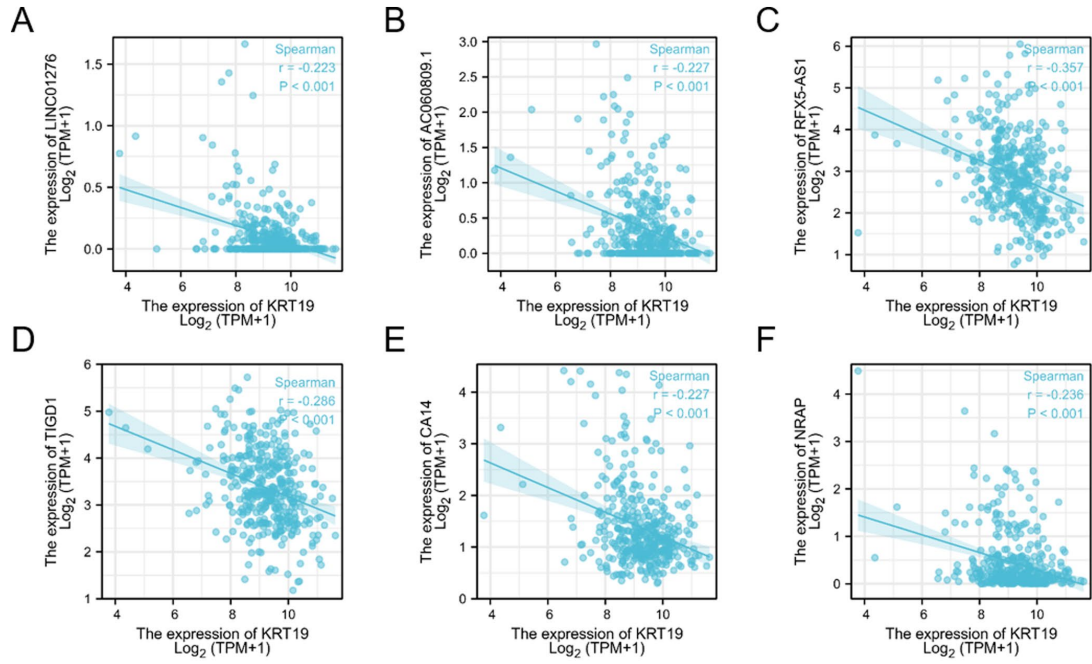


Figure S2. Correlation analysis of the top 6 negatively correlated genes of KRT19. (A) LINC01276, (B) AC060809.1, (C) RFX5-AS1, (D) TIGD1, (E) CA14, (F) NRAP

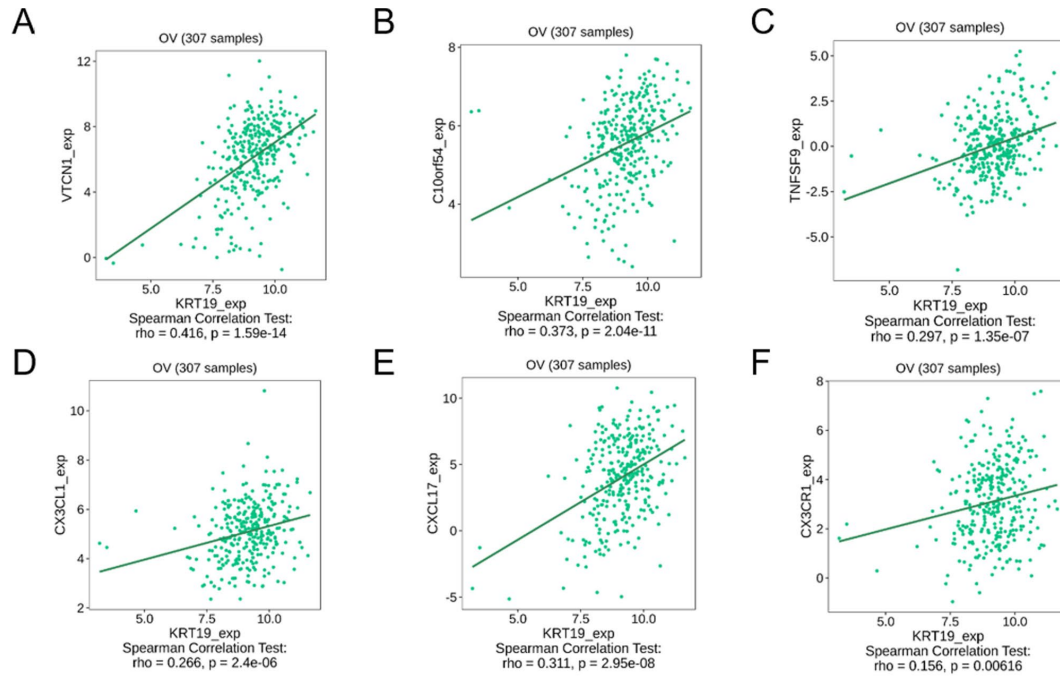


Figure S3. KRT19 expression was significantly positively associated with (A) VTCN1, (B) C10orf54, (C) TNFSF9, (D) CXC3CL1, (E) CXCL17, (F) CX3CR1