

Figure S1 : Location of resected tumors in the two groups before propensity score matching, according to Couinaud's classification. (A) anterior view in OH group; (B) posterior view in OH group; (C) anterior view in LH group; (D) posterior view in LH group

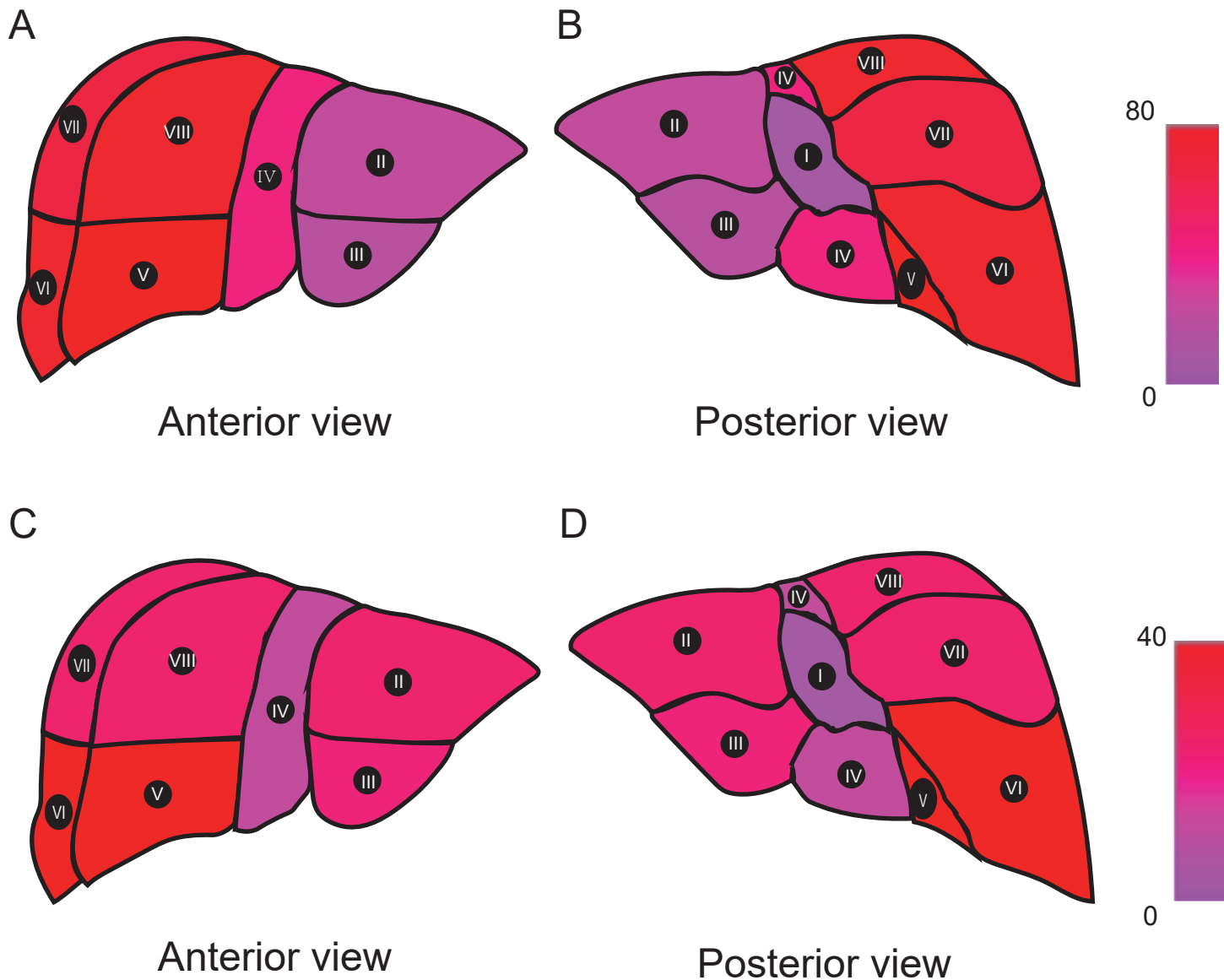
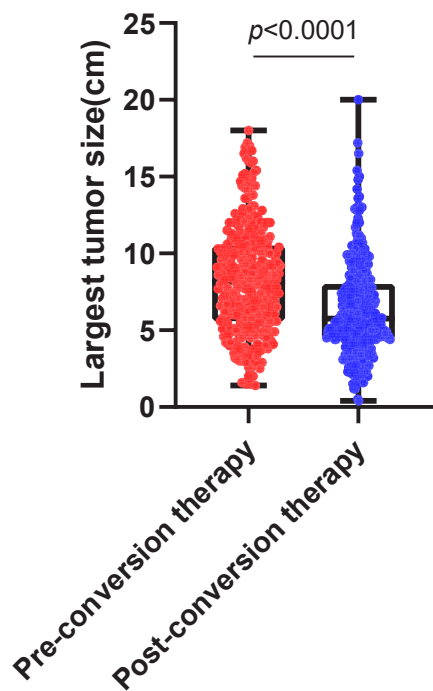
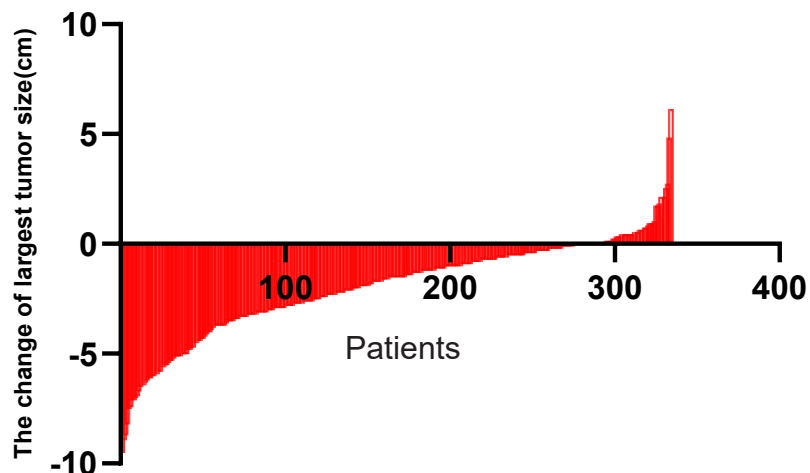


Figure S2: Location of resected tumors in the two groups after propensity score matching, according to Couinaud's classification. (A) anterior view in OH group; (B) posterior view in OH group; (C) anterior view in LH group; (D) posterior view in LH group.

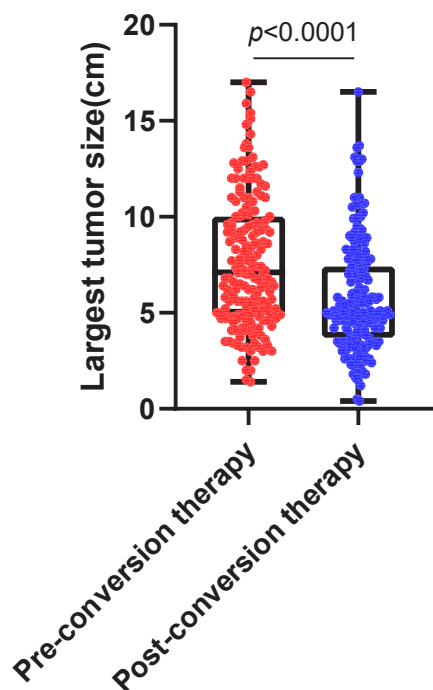
A



B



C



D

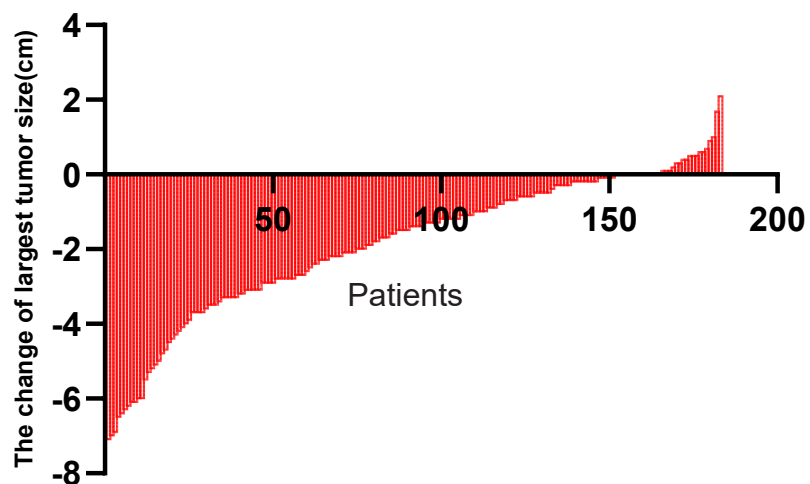


Figure S3 : (A) Largest tumor size in pre-conversion therapy and post-conversion therapy before PSM. (B) Waterfall plot of largest tumor size change from pre-conversion therapy to post-conversion therapy before PSM. (C) Largest tumor size in pre-conversion therapy and post-conversion therapy after PSM. (D) Waterfall plot of largest tumor size change from pro-conversion therapy to post-conversion therapy after PSM.

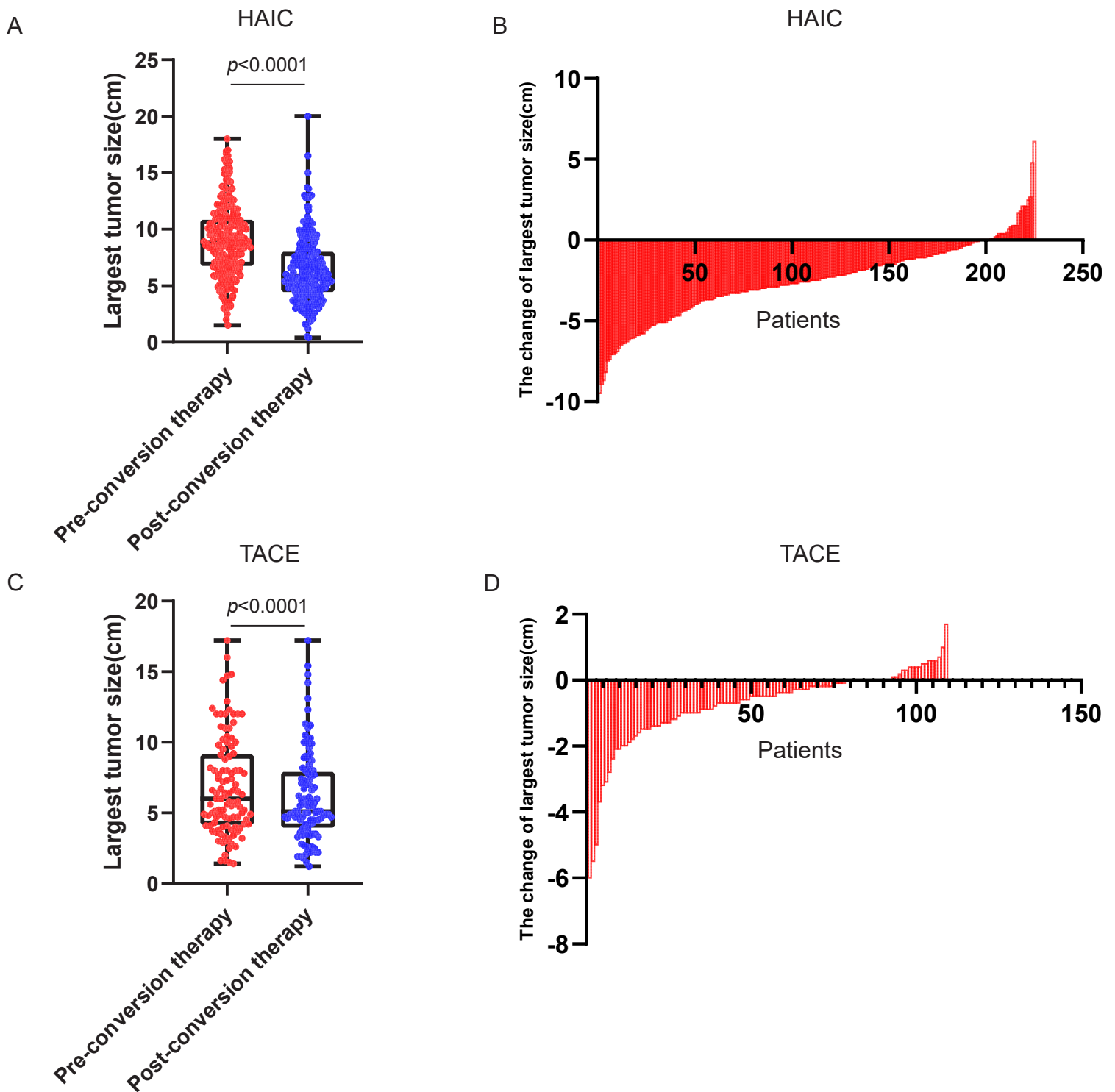


Figure S4 : (A) Largest tumor size in pre-conversion therapy and post-conversion therapy in HAIC group. (B) Waterfall plot of largest tumor size change from pre-conversion therapy to post-conversion therapy in HAIC group. (C) Largest tumor size in pre-conversion therapy and post-conversion therapy in TACE group. (D) Waterfall plot of largest tumor size change from pro-conversion therapy to post-conversion therapy in TACE group.

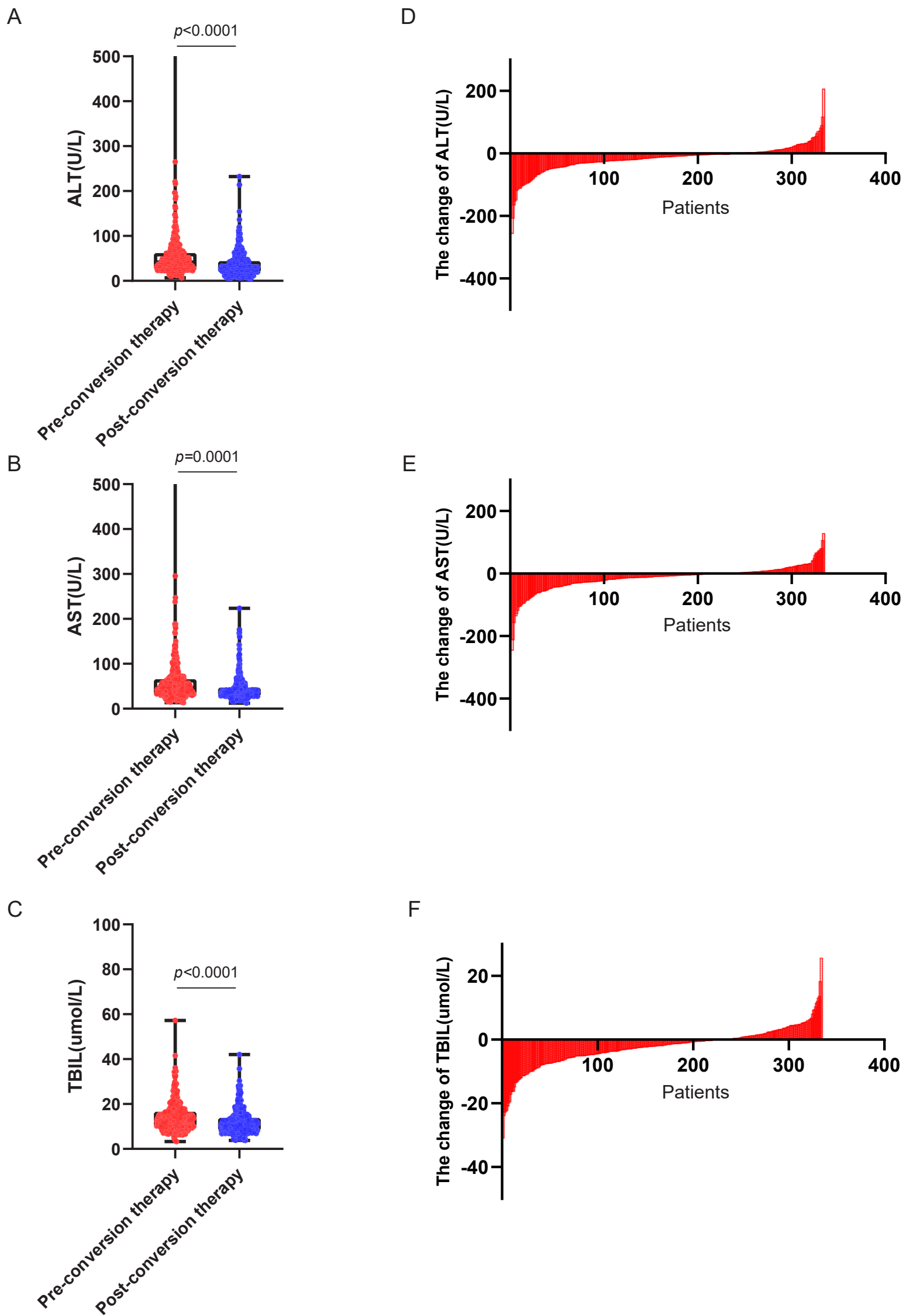


Figure S5 : (A) ALT, (B)AST, (C) TBIL in pre-conversion therapy and post-conversion therapy before PSM. Waterfall plot of (D) ALT, (E)AST, (F) TBIL change from pre-conversion therapy to post-conversion therapy before PSM.

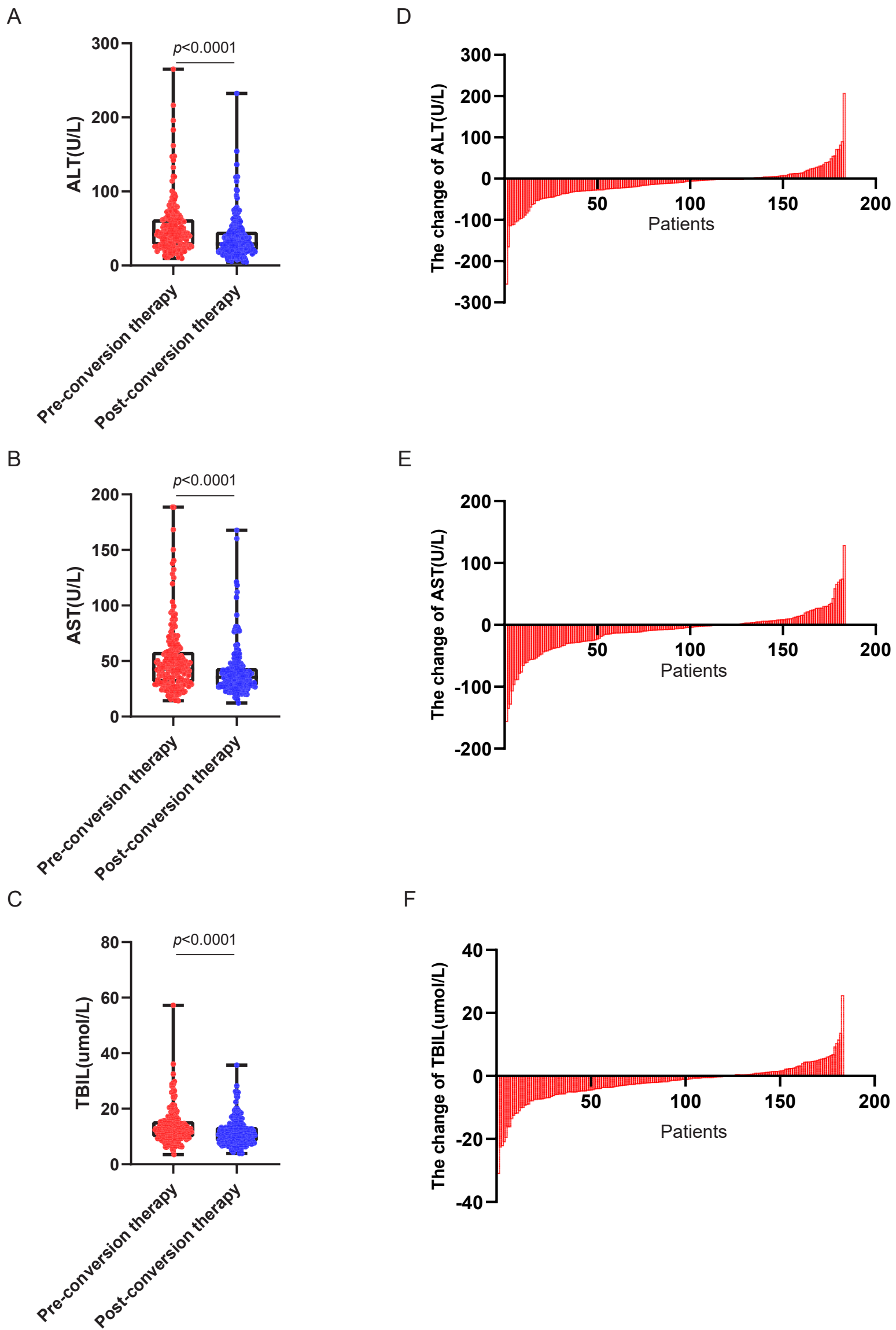


Figure S6 : (A) ALT, (B)AST, (C) TBIL in pre-conversion therapy and post-conversion therapy after PSM. Waterfall plot of (D) ALT, (E)AST, (F) TBIL change from pre-conversion therapy to post-conversion therapy after PSM.

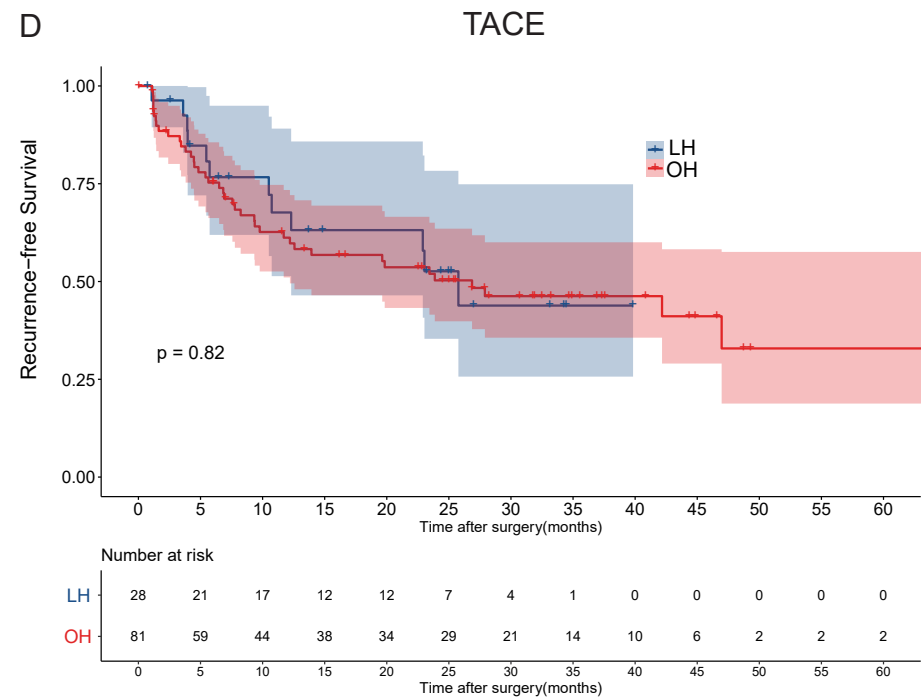
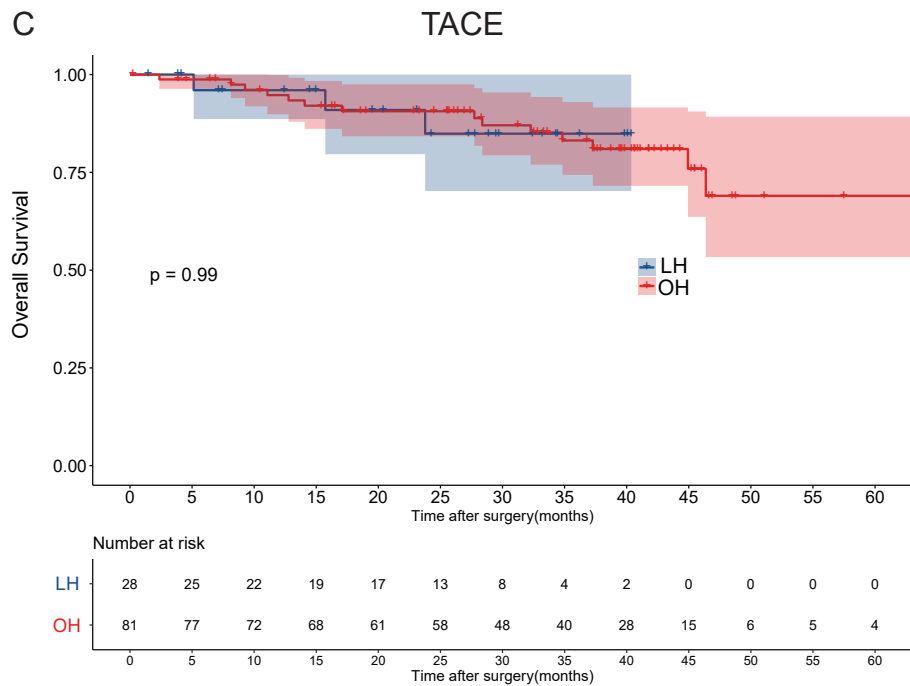
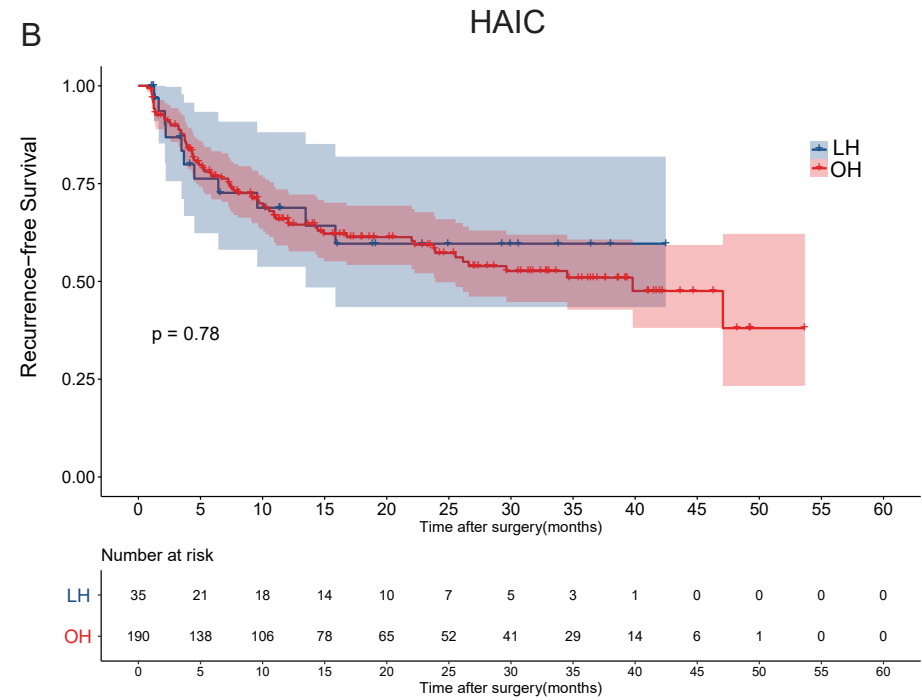
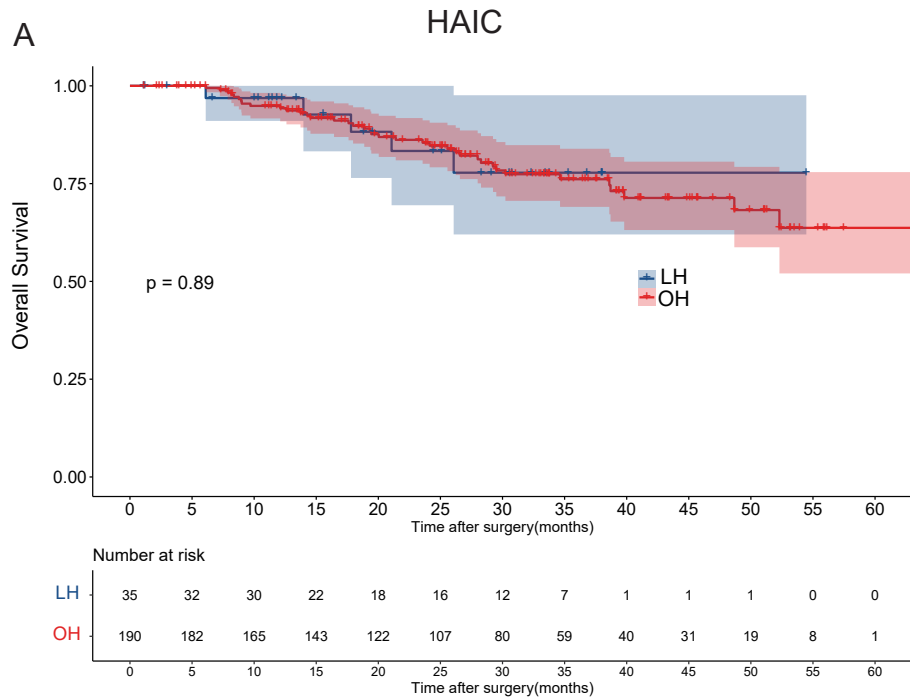


Figure S7 : (A) Overall and (B) recurrence-free survival, according to surgical approach (open versus laparoscopic) in HAIC group; (C) Overall and (D) recurrence-free survival, according to surgical approach (open versus laparoscopic) in TACE group.