

**Supplementary Table 1.** The numbers and percentages of children contributed to **Figure 2**.

<b>Year</b>	<b>Population (n)</b>	<b>C-alone users (n)</b>	<b>W-alone users (n)</b>	<b>D-alone users (n)</b>	<b>C-alone users (%)</b>	<b>W-alone users (%)</b>	<b>D-alone users (%)</b>
<b>2002</b>	235,703	46,268	201,619	89,296	0.211	0.920	0.407
<b>2003</b>	232,966	45,239	187,399	86,896	0.222	0.919	0.426
<b>2004</b>	225,954	44,245	176,312	88,976	0.232	0.926	0.467
<b>2005</b>	227,729	42,072	165,124	84,301	0.237	0.930	0.475
<b>2006</b>	225,796	38,500	149,012	78,043	0.234	0.907	0.475
<b>2007</b>	221,991	37,546	135,776	69,475	0.249	0.901	0.461
<b>2008</b>	218,649	35,186	121,693	60,527	0.257	0.888	0.442
<b>2009</b>	213,949	33,121	112,564	54,044	0.268	0.912	0.438
<b>2010</b>	209,091	28,300	99,566	47,843	0.257	0.905	0.435
<b>2011</b>	195,416	24,922	88,748	39,857	0.259	0.922	0.414
<b>2012</b>	181,432	21,998	75,613	33,730	0.266	0.913	0.407

Abbreviations: C, traditional Chinese physician; D, dentist; W, Western physician.

**Supplementary Table 2.** The numbers and percentages of children contributed to **Figure 3A** and **3B**.

<b>Year</b>	<b>Population (n)</b>	<b>W+C users (n)</b>	<b>W+D users (n)</b>	<b>W+C+D users (n)</b>	<b>W+C users (%)</b>	<b>W+D users (%)</b>	<b>W+C+D users (%)</b>
<b>2002</b>	219,196	19794	25163	162	0.0903	0.1148	0.0007
<b>2003</b>	204,020	19037	24368	175	0.0933	0.1194	0.0009
<b>2004</b>	190,357	18743	27109	271	0.0985	0.1424	0.0014
<b>2005</b>	177,525	18111	25933	230	0.1020	0.1461	0.0013
<b>2006</b>	164,266	15277	21666	229	0.0930	0.1319	0.0014
<b>2007</b>	150,637	14748	18019	217	0.0979	0.1196	0.0014
<b>2008</b>	136,972	13268	14530	183	0.0969	0.1061	0.0013
<b>2009</b>	123,379	12950	12822	136	0.1050	0.1039	0.0011
<b>2010</b>	110,032	10798	10743	89	0.0981	0.0976	0.0008
<b>2011</b>	96,267	10215	8864	61	0.1061	0.0921	0.0006
<b>2012</b>	82,837	8435	7243	76	0.1018	0.0874	0.0009

Abbreviations: C, traditional Chinese physician; D, dentist; W, Western physician.

**Supplementary Table 3.** The numbers and percentages of children contributed to **Supplementary Figure 1A** and **1B**.

<b>Year</b>	<b>Numbers of prescriptions (n)</b>	<b>Numbers of coprescriptions of W+C (n)</b>	<b>Numbers of coprescriptions of W+D (n)</b>	<b>Numbers of coprescriptions of W+D (n)</b>	<b>Numbers of coprescriptions of W+C (%)</b>	<b>Numbers of coprescriptions of W+D (%)</b>	<b>Numbers of coprescriptions of W+D (%)</b>
<b>2002</b>	2,869,005	38,982	23,624	97	13.5873	8.2342	0.0338
<b>2003</b>	2,515,400	37,886	23,299	122	15.0616	9.2625	0.0485
<b>2004</b>	2,393,953	38,214	26,448	188	15.9627	11.0478	0.0785
<b>2005</b>	2,178,229	36,929	25,144	151	16.9537	11.5433	0.0693
<b>2006</b>	1,733,107	29,898	20,131	143	17.2511	11.6156	0.0825
<b>2007</b>	1,490,490	27,680	16,059	158	18.5711	10.7743	0.1060
<b>2008</b>	1,248,653	24,356	12,441	128	19.5058	9.9635	0.1025
<b>2009</b>	1,176,705	24,377	10,724	103	20.7163	9.1136	0.0875
<b>2010</b>	994,013	20,399	8,783	92	20.5219	8.8359	0.0926
<b>2011</b>	913,470	19,497	7,107	61	21.3439	7.7802	0.0668
<b>2012</b>	728,759	15,446	5,762	85	21.1949	7.9066	0.1166

Abbreviations: C, traditional Chinese physician; D, dentist; W, Western physician.

**Supplementary Table 4.** The numbers and percentages of children contributed to **Figure Supplementary 2A** and **2B**.

<b>Year</b>	<b>Days of prescriptions (n)</b>	<b>Days of coprescriptions of W+C (n)</b>	<b>Days of coprescriptions of W+D (n)</b>	<b>Days of coprescriptions of W+D (n)</b>	<b>Days of coprescriptions of W+C (%)</b>	<b>Days of coprescriptions of W+D (%)</b>	<b>Days of coprescriptions of W+D (%)</b>
<b>2002</b>	47,225,909	74,425	311,099	207	1.5759	6.5875	0.0044
<b>2003</b>	41,114,950	83,028	335,820	1,792	2.0194	8.1678	0.0436
<b>2004</b>	38,638,238	87,256	344,729	6,858	2.2583	8.9220	0.1775
<b>2005</b>	35,124,485	91,912	377,692	2,324	2.6168	10.7530	0.0662
<b>2006</b>	27,401,849	46,441	234,795	793	1.6948	8.5686	0.0289
<b>2007</b>	23,981,139	42,614	200,485	4,232	1.7770	8.3601	0.1765
<b>2008</b>	21,076,328	43,190	150,263	147	2.0492	7.1295	0.0070
<b>2009</b>	23,067,773	3,747	8,668	0	0.1624	0.3758	0.0000
<b>2010</b>	24,122,489	4,652	9,463	0	0.1928	0.3923	0.0000
<b>2011</b>	22,700,221	4,258	8,194	0	0.1876	0.3610	0.0000
<b>2012</b>	18,523,781	3,828	5,141	0	0.2067	0.2775	0.0000

Abbreviations: C, traditional Chinese physician; D, dentist; W, Western physician.

**Supplementary Table 5.** The numbers of children contributed to **Figure 4A** and **4B**.

<b>Age</b>	<b>W+C users (n)</b>	<b>W+D users (n)</b>	<b>W+C+D users (n)</b>
<1	0	0	0
1	530	107	0
2	1,066	550	4
3-5	4,417	7,274	44
6-8	4,023	8,063	58
9-11	3,440	4,132	15
12-14	3,059	2,329	23
15-17	3,259	2,708	18

Abbreviations: C, traditional Chinese physician; D, dentist; W, Western physician.

**Supplementary Table 6.** The numbers of children contributed to **Figure 5A, 5B,** and **5C.**

<b>Age</b>	<b>Numbers of coprescriptions</b>			<b>Numbers of children</b>			<b>Numbers of coprescriptions/ numbers of children</b>		
	<b>W+C</b>	<b>W+D</b>	<b>W+C+D</b>	<b>W+C</b>	<b>W+D</b>	<b>W+C+D</b>	<b>W+C</b>	<b>W+D</b>	<b>W+C+D</b>
<b>&lt;1</b>	0	0	0	0	0	0	0.0	0.0	0
<b>1</b>	1,473	145	0	530	107	0	2.8	1.4	0.0
<b>2</b>	2,984	774	4	1,066	550	4	2.8	1.4	1.0
<b>3-5</b>	13,135	12,106	45	4,417	7,274	44	3.0	1.7	1.0
<b>6-8</b>	9,156	11,645	59	4,023	8,063	58	2.3	1.4	1.0
<b>9-11</b>	6,539	5,235	15	3,440	4,132	15	1.9	1.3	1.0
<b>12-14</b>	5,282	2,934	23	3,059	2,329	23	1.7	1.3	1.0
<b>15-17</b>	5,524	3,505	18	3,259	2,708	18	1.7	1.3	1.0

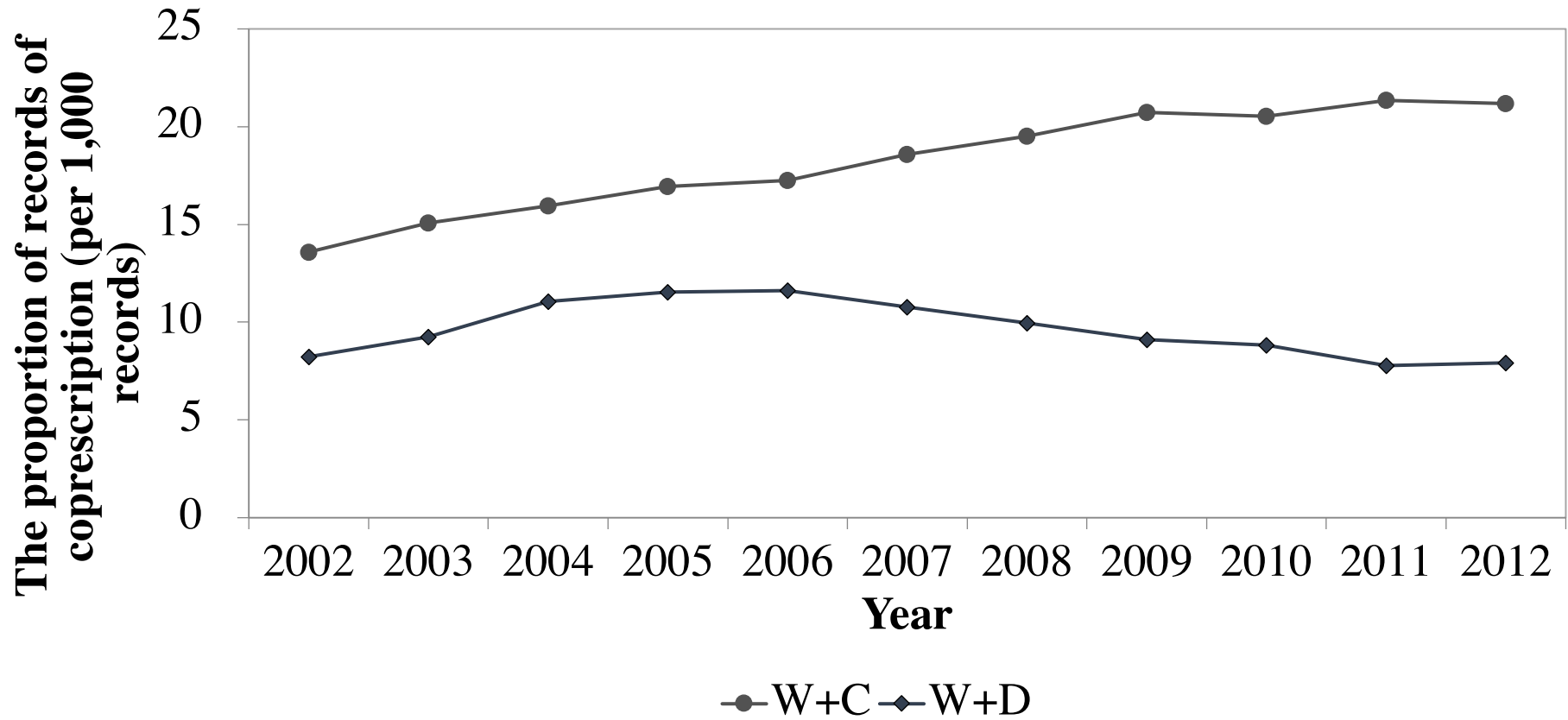
Abbreviations: C, traditional Chinese physician; D, dentist; W, Western physician.

**Supplementary Table 7.** The numbers of children contributed to **Figure 6A, 6B, 6C** and **6D**.

Age	Numbers of days of coprescriptions			Numbers of children			Numbers of days of coprescriptions/ numbers of children		
	W+C	W+D	W+C+D	W+C	W+D	W+C+D	W+C	W+D	W+C+D
<1	0	0	0	0	0	0	0.0	0.0	0.0
1	1,937	71	0	530	107	0	3.7	0.7	0.0
2	4,217	277	6	1,066	550	4	6.5	0.5	1.5
3-5	17,882	4,130	119	4,417	7,274	44	6.2	0.6	2.7
6-8	15,931	4,694	142	4,023	8,063	58	5.2	0.6	2.4
9-11	12,947	2,935	23	3,440	4,132	15	4.4	0.7	1.5
12-14	11,643	1,916	68	3,059	2,329	23	3.6	0.8	3.0
15-17	11,345	2301	37	3259	2,708	18	2.7	0.8	2.1

Abbreviations: C, traditional Chinese physician; D, dentist; W, Western physician.

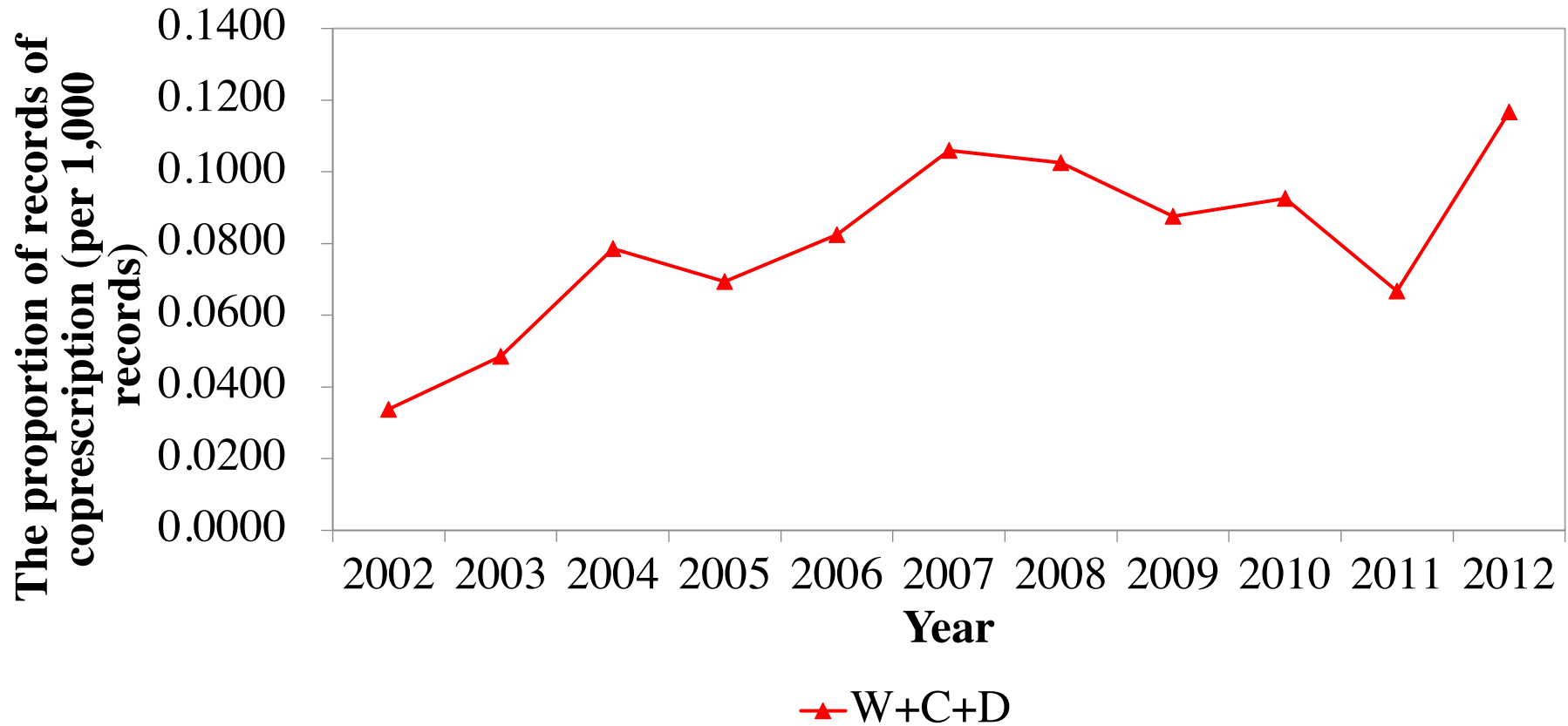
Supplementary Figure 1A



Supplementary Figure 1A The proportions of records of coprescriptions in children from W+C group indicated by green columns, and W+D group indicated by blue columns are stratified by year and corrected for the total number of coprescriptions in the insurance population yearly. Abbreviations: W, Western physician; C, traditional Chinese physician; D, dentist



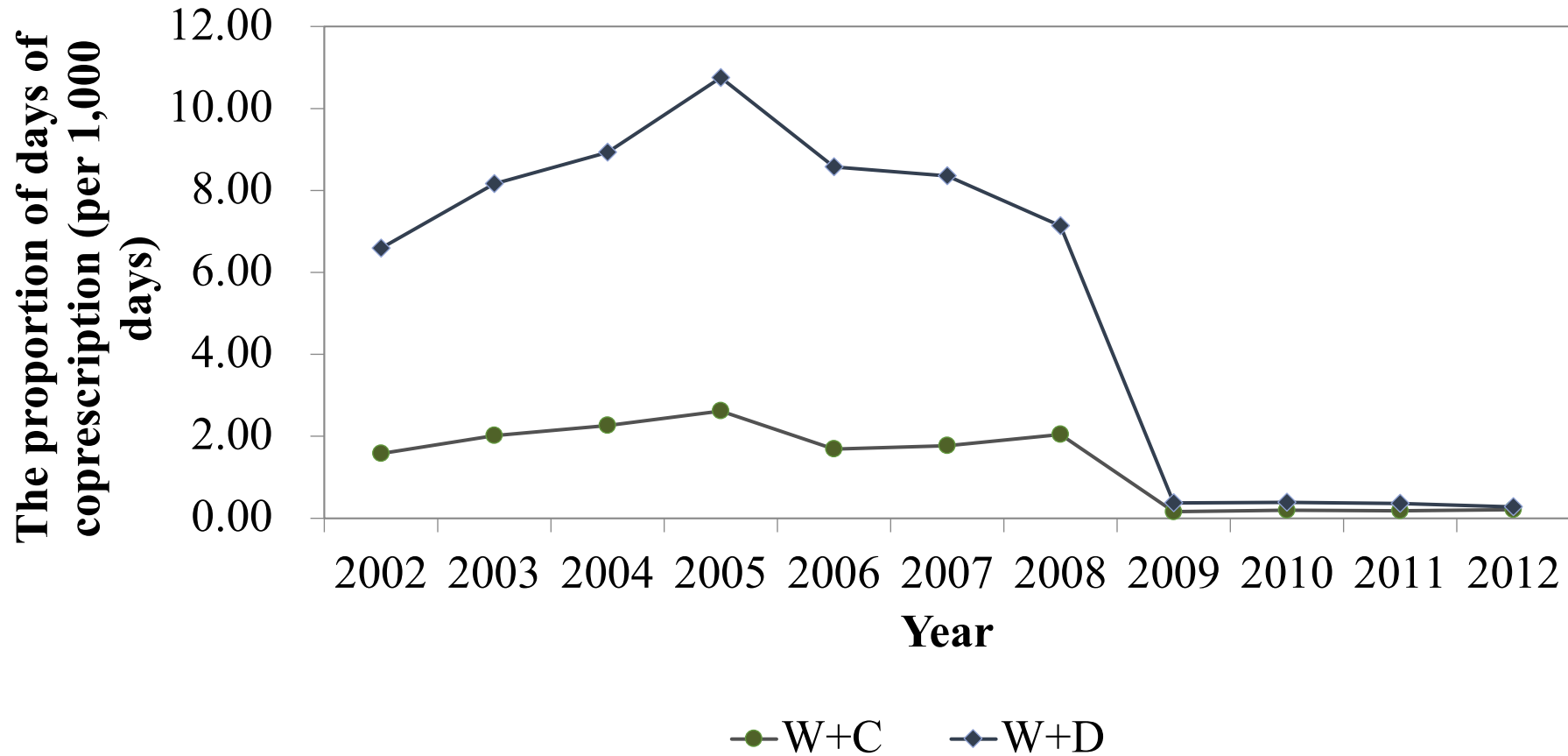
Supplementary Figure 1B



Supplementary Figure 1B The proportions of records of coprescriptions in children from W+C+D group indicated by red columns are stratified by year and corrected for the total number of coprescriptions in the insurance population yearly.

Abbreviations: W, Western physician; C, traditional Chinese physician; D, dentist

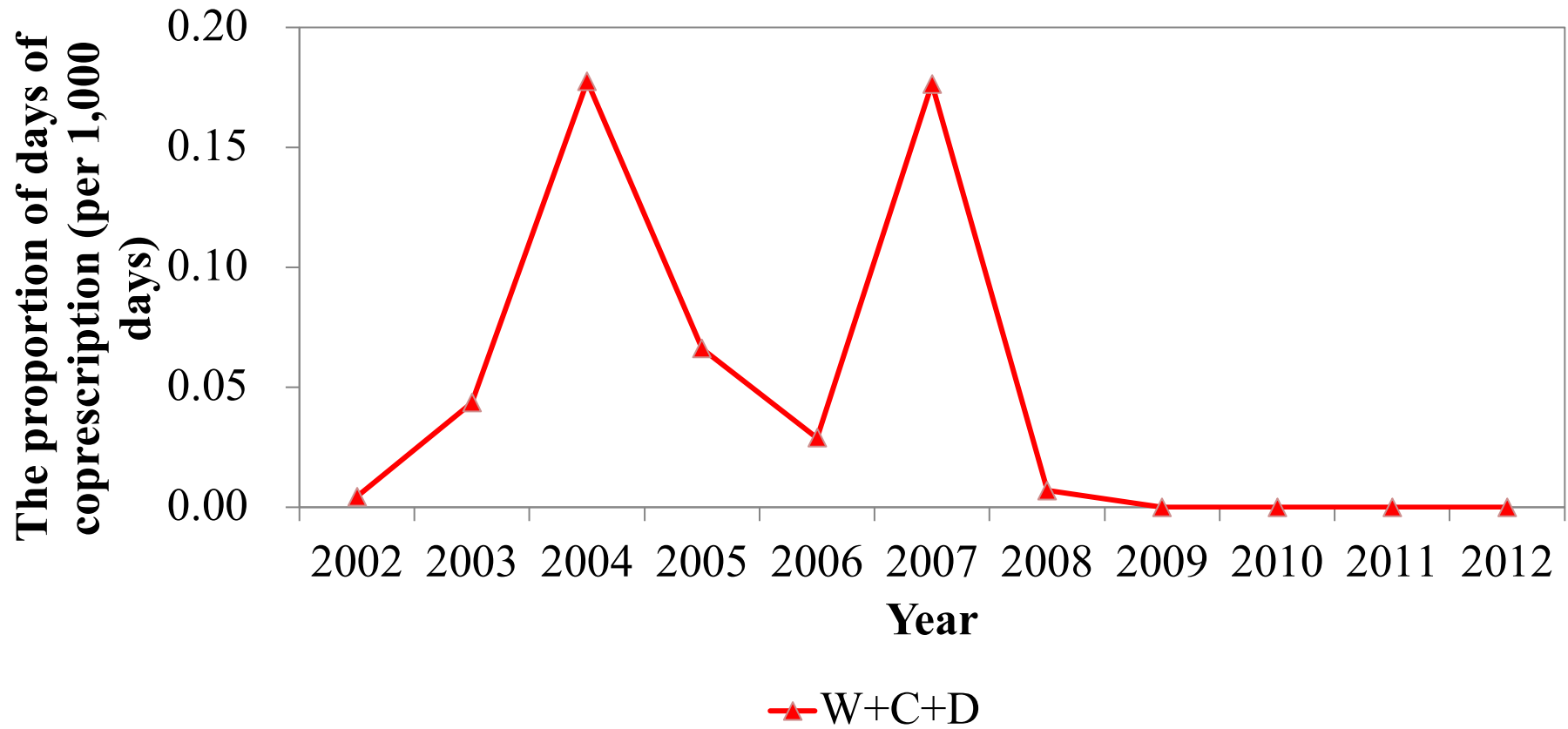
Supplementary Figure 2A



**Figure 2A** The Proportions of days of coprescriptions in children from W+C group indicated by green line, and W+D group indicated by blue line are stratified by year and corrected for the total days of prescriptions yearly.

**Abbreviations:** W, Western physician; C, traditional Chinese physician; D, dentist

Supplementary Figure 2B



**Figure 2B** The Proportions of days of coprescriptions in children from W+C+D group indicated by a red line are stratified by year and corrected for the total days of prescriptions yearly.

**Abbreviations:** W, Western physician; C, traditional Chinese physician; D, dentist