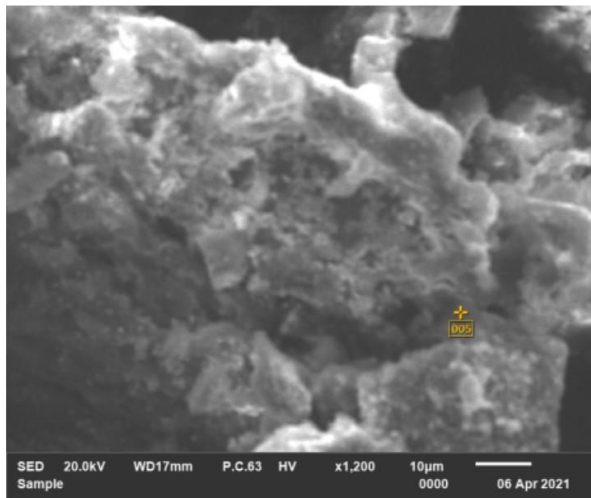
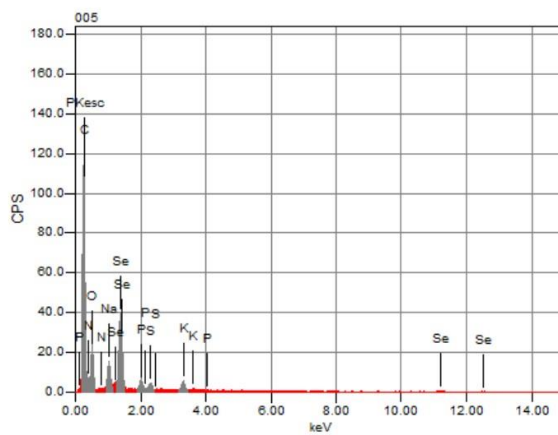


005



Volt : 20.00 kV
Mag. : x 1,200
Date : 2021/04/06
Pixel : 640 x 480



Acquisition Condition
Instrument : IT100LA
Volt : 20.00 kV
Current : ---
Process Time : T3
Live time : 27.56 sec.
Real Time : 27.91 sec.
DeadTime : 2.00 %
Count Rate : 2285.00 CPS

Formula	mass%	Atom%	Sigma	Net	K ratio	Line
C	43.28	52.03	0.03	74805	0.0205412	K
N	26.47	27.29	0.17	7796	0.0290421	K
O	19.45	17.56	0.11	16152	0.0202690	K
Na	1.80	1.13	0.02	13005	0.0066294	K
P	0.45	0.21	0.01	5168	0.0024128	K
S	0.33	0.15	0.01	4098	0.0018321	K
K	0.63	0.23	0.01	6688	0.0038747	K
Se	7.58	1.39	0.07	47746	0.0431695	L
Total	100.00	100.00				

JEOL EDX System

JEOL

Figure 1 S. Scanning electron microscopy-energy dispersive X-ray analysis (SEM-EDX) of NSP.

Table 1S. Primers for gene expression by RT-PCR

Gene	Direction	Primer sequence	Accession number
CAT	F:	TAAGACTGACCAGGGCA	NM_012520.2
	R:	CAAACCTTGGTGAGATCGAA	
p21CIP1/WAF1	F:	GACCTGTTCCACACAGGAGCAAAG	NM_080782.3
	R:	GTCTCAGTGGCGAAGTCAAAGTTC	
Bax	F:	GGCGAATTGGCGATGAACTG	NM_017059.2
	R:	ATGGTTCTGATCAGCTCGGG	
Bcl-2	F:	GATTGTGGCCTTCTTTGAGT	NM_016993.1
	R:	ATAGTTCCACAAAGGCATCC	
SOD	F:	AGGATTAAGTGAAGGCGAGCAT	NM_017050.1
	R:	TCTACAGTTAGCAGGCCAGCAG	
Nrf2	F:	TGTCAGCTACTCCAGGTTG	NM_031789.2
GAPDH	R:	TCAAGAAGGTGGTGAAGCAG	NM_017008.4
	F:	AGGTGGAAGAATGGGAGTTG	

Bax, Bcl-2-associated X protein. Bcl-2, B-cell lymphoma 2. CAT, catalase. GAPDH, glyceraldehyde-3-phosphate dehydrogenase. SOD, superoxide dismutase. (Nrf2) Nuclear factor (erythroid-derived 2)-like 2. cyclin-dependent kinase inhibitor (CDKi) p21