

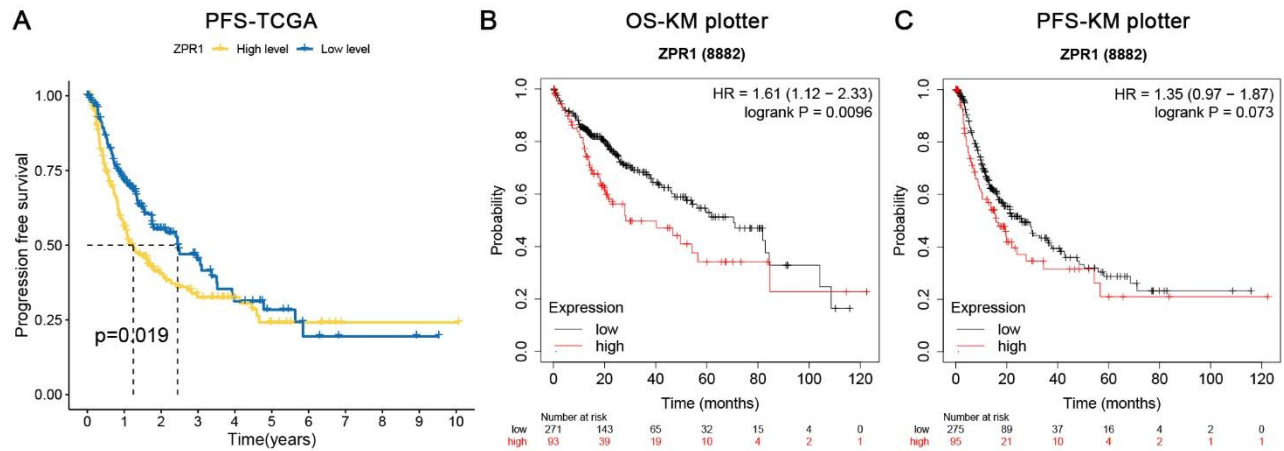
Supplementary Material

Pan-Cancer Profiling and Digital Pathology Analysis Reveal Negative Prognostic Biomarker ZPR1 Associated with Immune Infiltration and Treatment Response in Hepatocellular Carcinoma

Lian He, Yusai Xie*, Yusong Qiu, Yong Zhang*

* **Correspondence:** Corresponding Author: Yusai Xie, ysxie@cmu.edu.cn; Yong Zhang, zhycmu@163.com

1.1 Supplementary Figures



Supplementary Figure 1. (A) Progression-free survival analysis of TCGA HCC database. (B) Overall survival and (C) Progression-free survival analysis of Kaplan–Meier database.

1.2 Supplementary Table

Supplementary Table 1. Cancer types and number of patients from TCGA and GTEx databases.

Abbreviation	Cancer type	TCGA		TCGA + GTEx	
		Normal	Tumor	Normal	Tumor
ACC	Adrenocortical carcinoma	0	79	128	79
BLCA	Bladder urothelial carcinoma	19	412	28	412
BRCA	Breast invasive carcinoma	113	1113	292	1113
CESC	Cervical squamous cell carcinoma and endocervical adenocarcinoma	3	306	13	306
CHOL	Cholangiocarcinoma	9	35	9	35
COAD	Colon adenocarcinoma	41	480	349	480
DLBC	B cell lymphoma	0	48	444	48
ESCA	Esophageal carcinoma	13	163	668	163
GBM	Glioblastoma multiforme	5	169	1157	169
HNSC	Head and neck squamous cell carcinoma	44	504	44	504
KICH	Kidney chromophobe	25	65	53	65
KIRC	Kidney renal clear cell carcinoma	72	531	100	531
KIRP	Kidney renal papillary cell carcinoma	32	291	60	291
LAML	Acute myeloid leukemia	0	150	70	150
LGG	Brain lower grade glioma	0	532	1152	532
LIHC	Liver hepatocellular carcinoma	50	371	160	371
LUAD	Lung adenocarcinoma	59	515	347	515
LUSC	Lung squamous cell carcinoma	50	498	338	498
MESO	Mesothelioma	0	87	0	87
OV	Ovarian serous cystadenocarcinoma	0	381	88	381
PAAD	Pancreatic adenocarcinoma	4	179	171	179
PCPG	Pheochromocytoma and paraganglioma	3	184	3	184
PRAD	Prostate adenocarcinoma	52	501	152	501
READ	Rectum adenocarcinoma	10	107	318	107
SARC	Sarcoma	2	263	2	263
SKCM	Skin cutaneous melanoma	1	472	813	472
STAD	Stomach adenocarcinoma	32	375	206	375
TGCT	Testicular germ cell tumors	0	156	165	156
THCA	Thyroid carcinoma	59	512	338	512
THYM	Thymoma	2	120	446	120
UCEC	Uterine corpus endometrial carcinoma	35	554	113	554
UCS	Uterine carcinosarcoma	0	57	78	57
UVM	Uveal melanoma	0	80	0	80