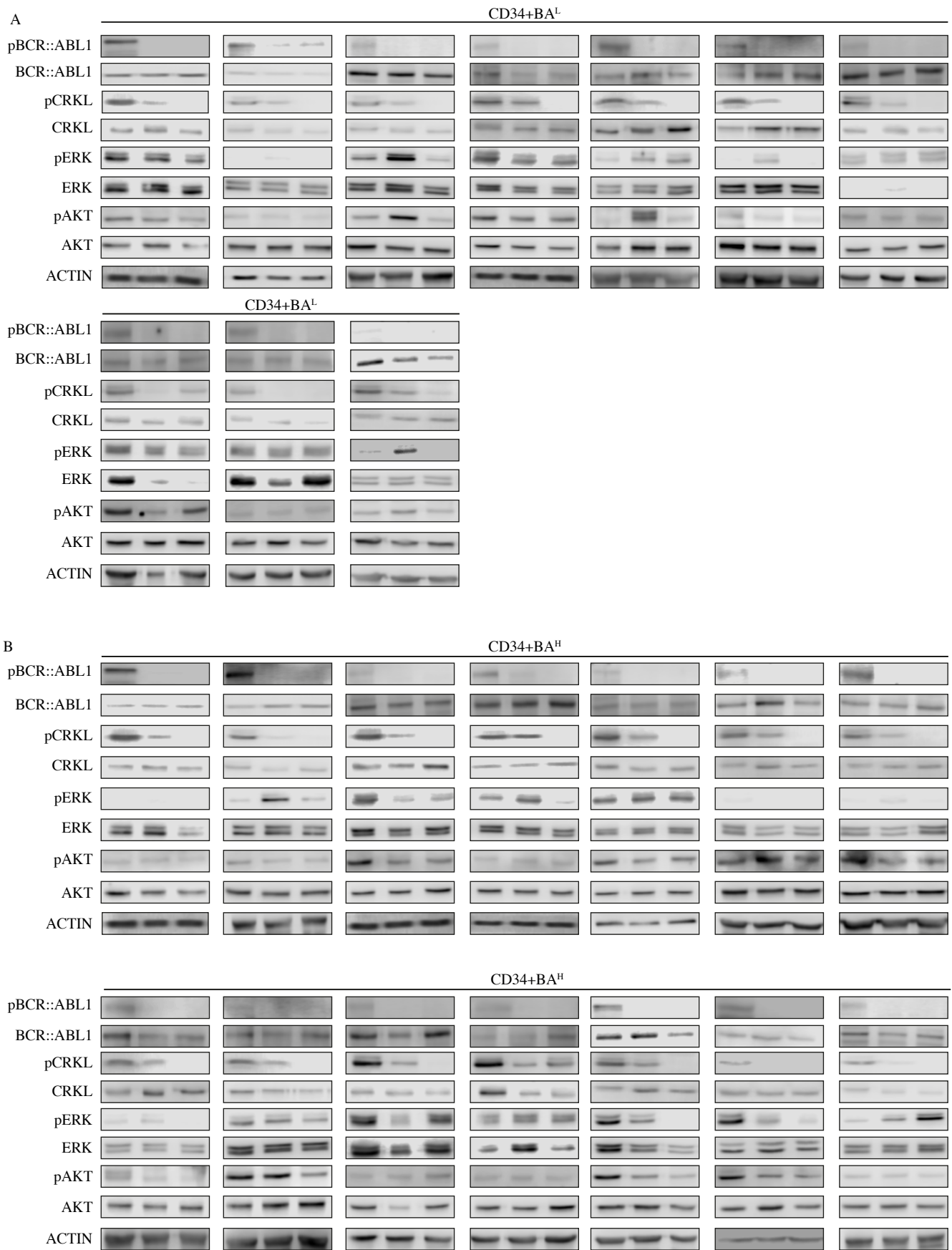


### Supplemental Figure 1.

A representative gating strategy of CD34+/CFSE+ cells to measure the percentage of proliferating CD34+CD38- and CD34+CD38-CD45RA-CD71- cells (black dots) compared to colcemid-blocked cells (gray dots).



**Supplemental Figure 2.**

Image showing the immunoblot of each indicated proteins and poshproteins obtained from protein lysates of CD34+BA<sup>L</sup> (A) or CD34+BA<sup>H</sup> (B).