

Table S1. Pharmacokinetic parameters of liraglutide after the oral administration of pure liraglutide (Lira) or EAC-Lira to rats (mean \pm SD, n = 4).

Parameters	Lira	EAC-Lira
T _{max} (h)	n.d.	2.0 \pm 0.0
C _{max} (ng/mL)	n.d.	71.1 \pm 36.3
AUC (ng•h/mL)	n.d.	480 \pm 253

n.d.: not determined (below the limit of quantitation (5 ng/mL)).

The dose was equivalent to 15 mg/kg of liraglutide.

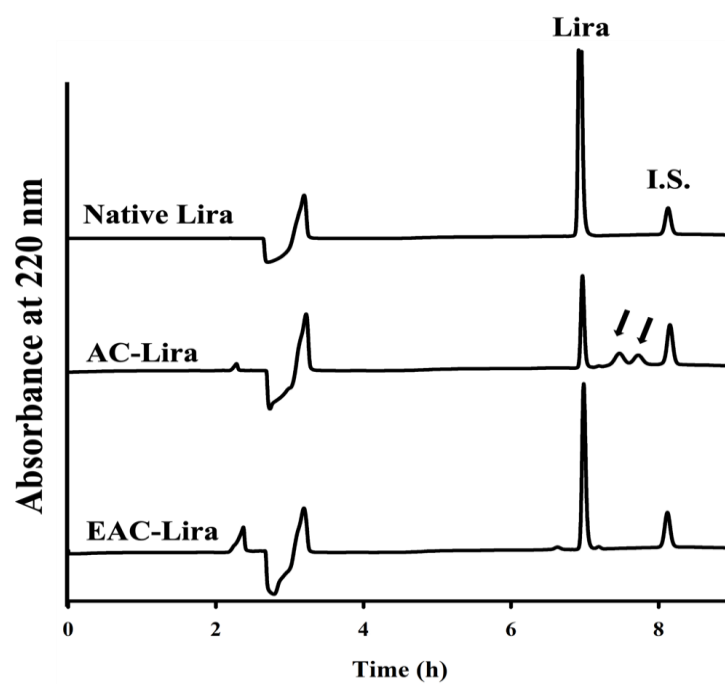


Fig. S1. HPLC chromatograms of liraglutide released from nanoparticles after 2 h- incubation in simulated gastric fluids (pH 1.2). I.S.: internal standard. The black arrows indicate the impurities.

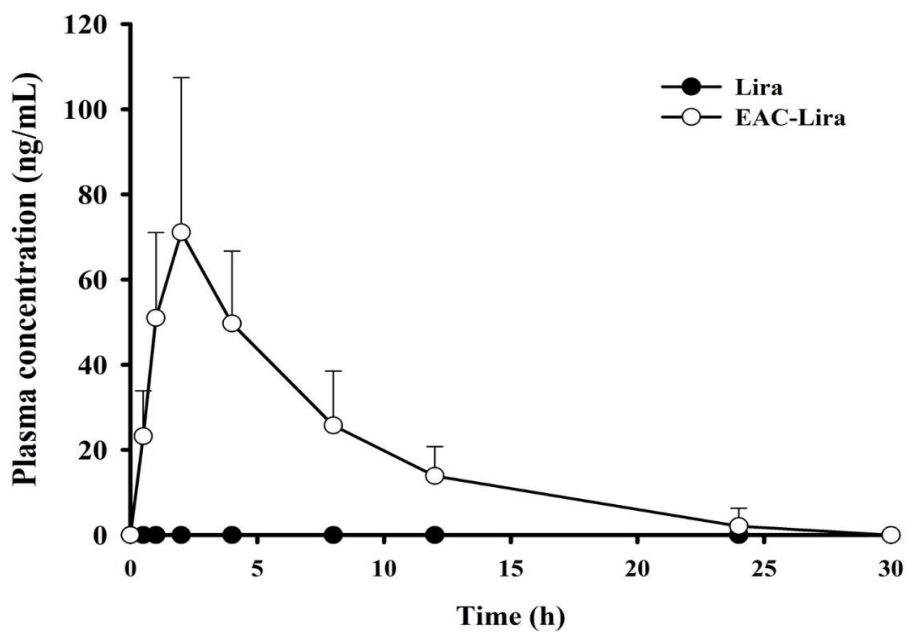


Fig. S2. Plasma concentration-time profiles of liraglutide after the oral administration of pure liraglutide (Lira) or EAC-Lira to rats (mean \pm SD, n = 4). The dose was equivalent to 15 mg/kg of liraglutide.