

A unique CD8⁺CD274⁺ cell infiltration subgroup in hepatocellular carcinoma is associated with poor clinical outcomes

Supplementary Tables and Figures

Table. S1 List of clinical characteristics for our validation cohort.

| Characteristic | | Cases |
|-----------------------|---|---------------|
| | CD8A ^{High} CD274 ^{High*} | 23 |
| | CD8A ^{High} CD274 ^{Low*} | 23 |
| | CD8A ^{Low} | 34 |
| OS status | Alive | 54 |
| | Death | 26 |
| RFS status | None-recurrence | 29 |
| | Recurrence | 51 |
| TNM Stage | I-II | 59 |
| | III-IV | 21 |
| Grade | I-II | 39 |
| | III-IV | 41 |
| Age | Median | 60 (year old) |
| Gender | Female | 16 |
| | Male | 64 |

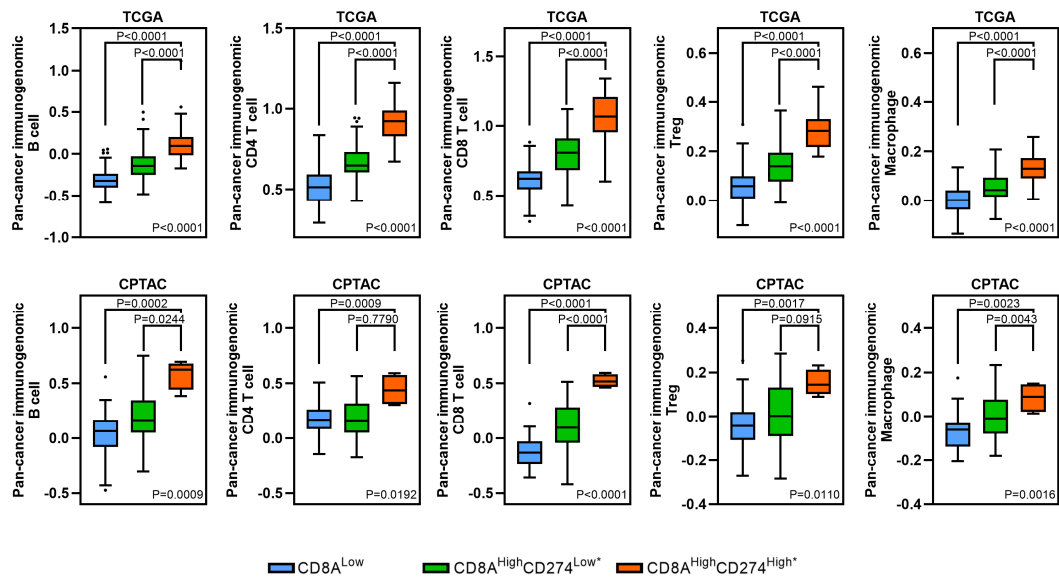


Fig.S1 Boxplots showing the major immune cell infiltrates based on Pan-cancer immunogenomic analysis signature for each CD8A/CD274 subtype in TCGA and CPTAC protein HCC cohorts.

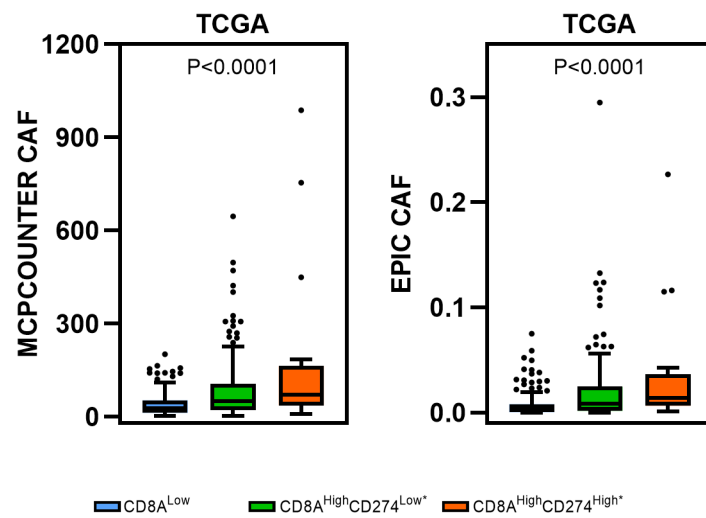


Fig.S2 Boxplots showing the CAF infiltrates based on MCPCOUNTER and EPIC for each CD8A/CD274 subtype in TCGA and CPTAC protein HCC cohorts.

