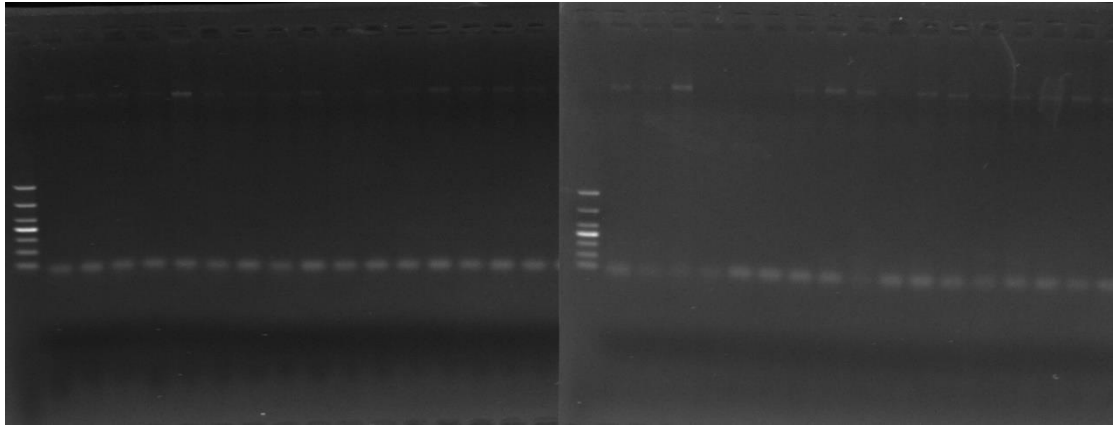


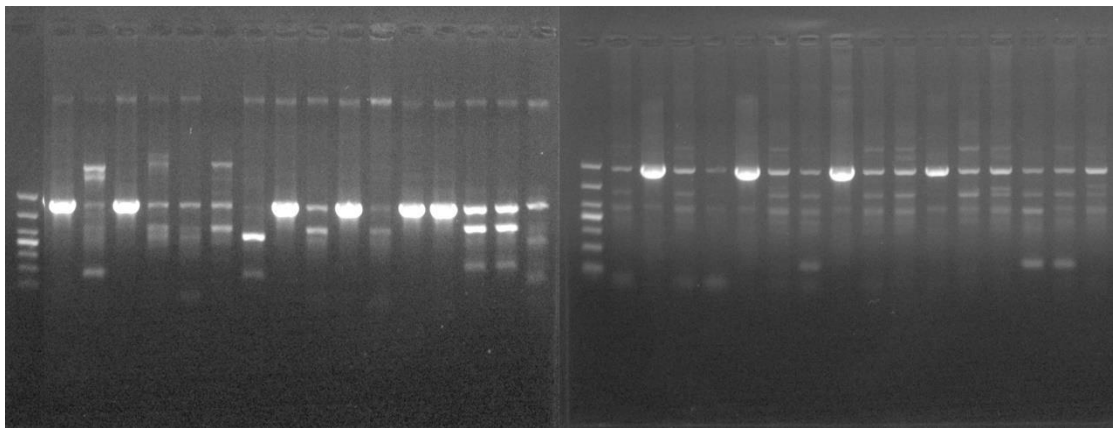
Gel electrophoresis picture description

There may be splices in the gel picture. This is due to the fact that the experiments in the article and other experiments (unpublished data) were conducted simultaneously. We were worried about the conflict of interest, so we separated the gel electrophoresis map of this study and then spliced it.

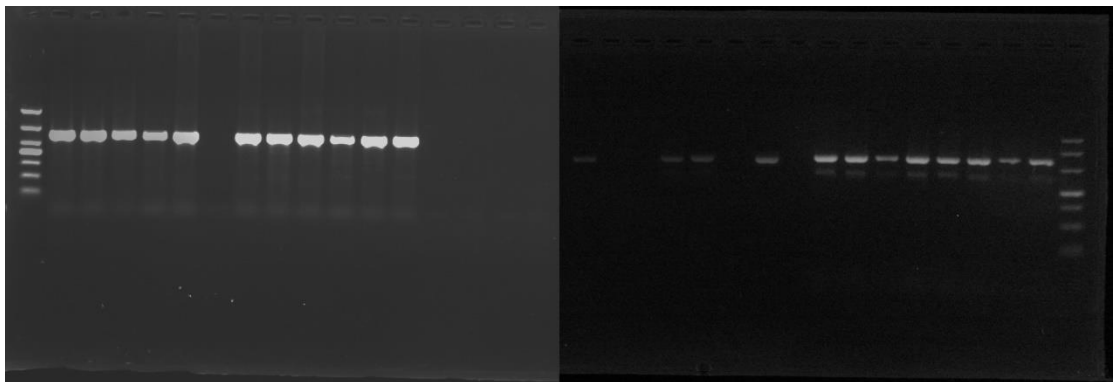
Drug Resistance Gene



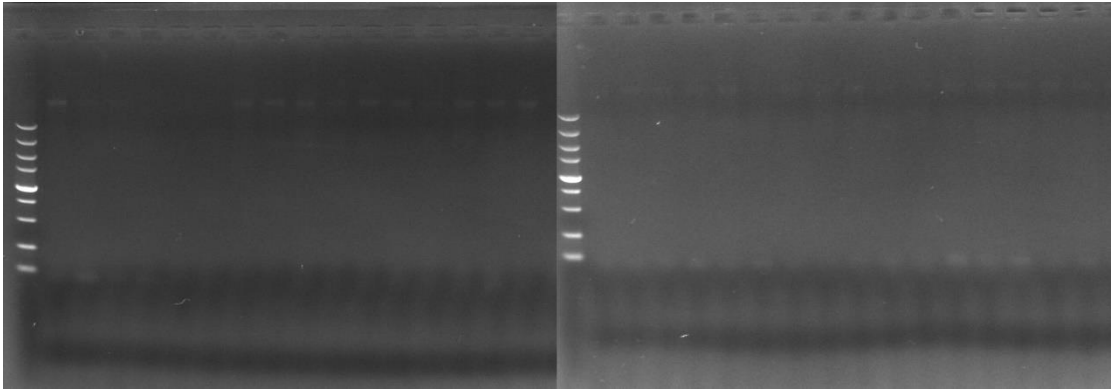
Supplementary Figure 1. Gel image of *SHV* gene



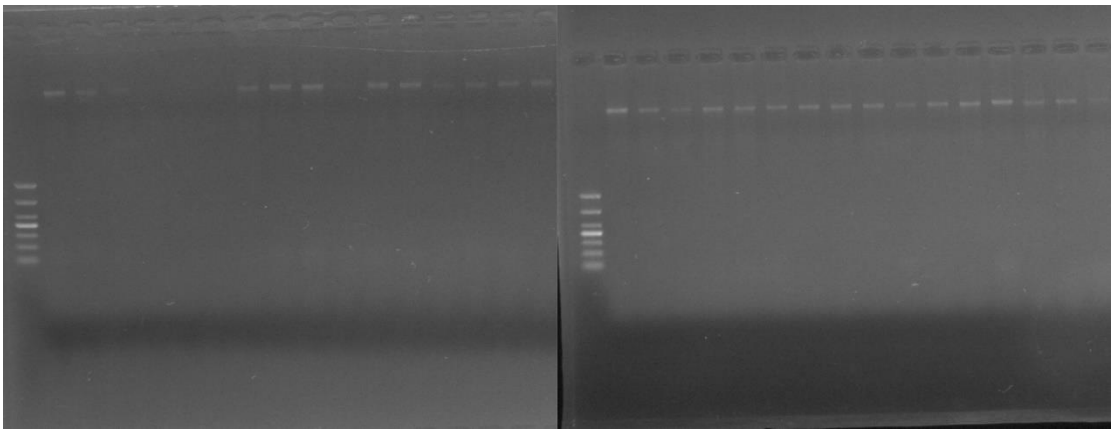
Supplementary Figure 2. Gel image of *TEM* gene



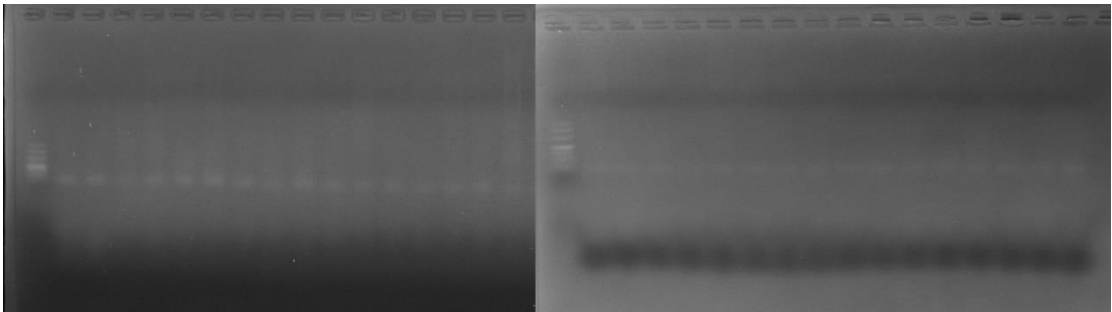
Supplementary Figure 3. Gel image of *CTX-M* gene



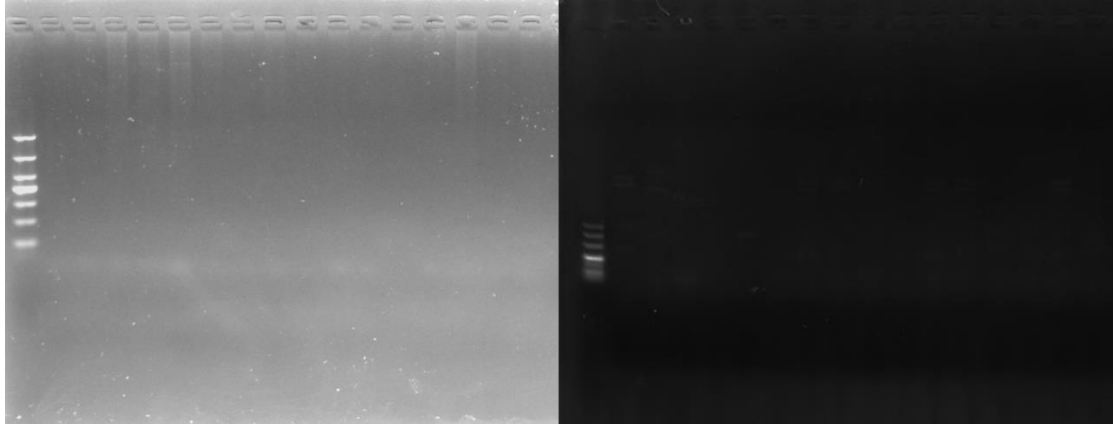
Supplementary Figure 4. Gel image of *IMP* gene



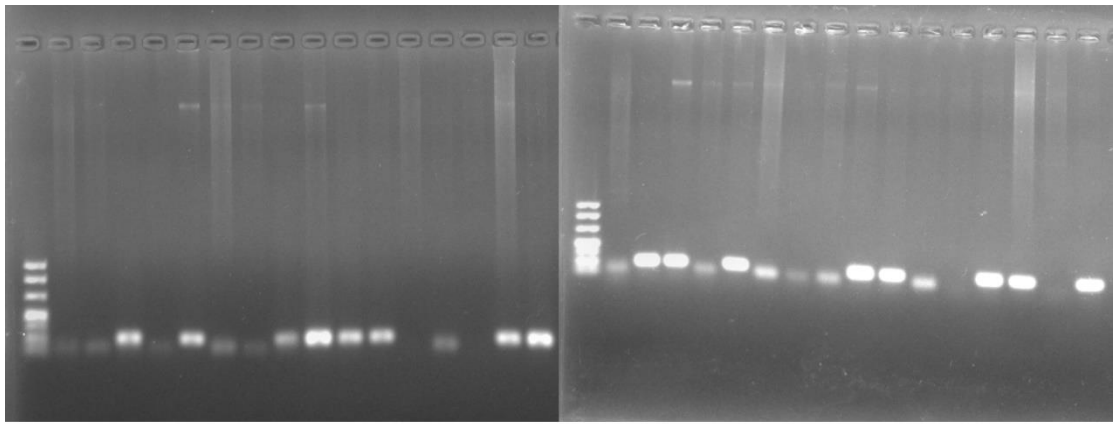
Supplementary Figure 5. Gel image of *SPM* gene



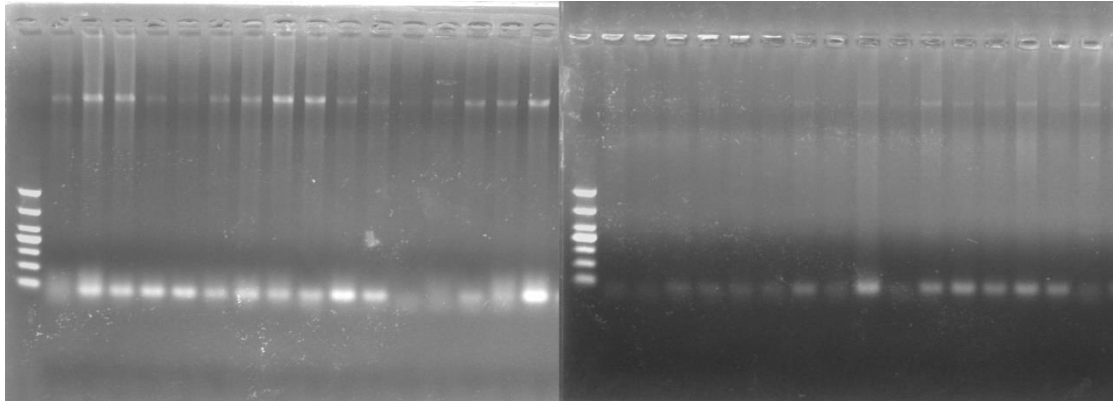
Supplementary Figure 6. Gel image of *AIM* gene



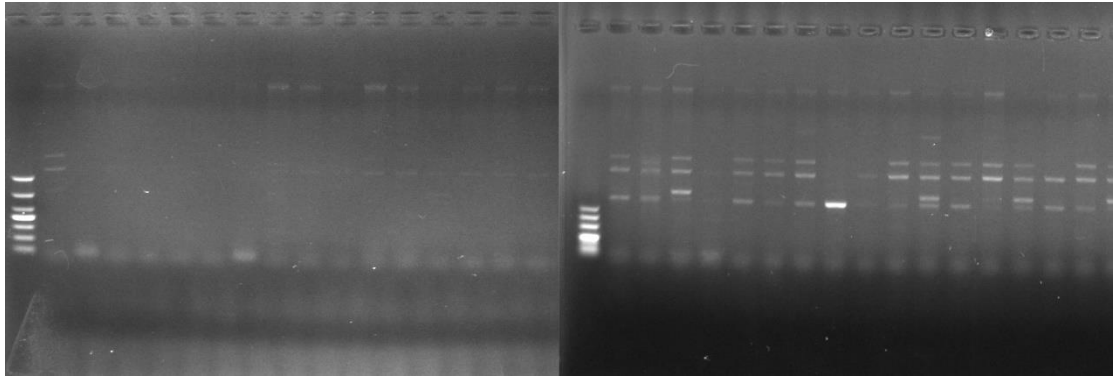
Supplementary Figure 7. Gel image of *VIM* gene



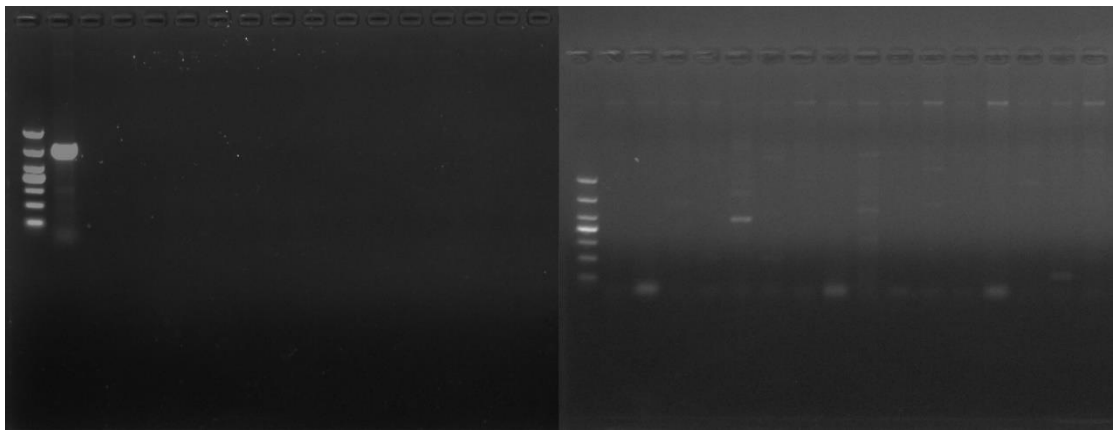
Supplementary Figure 8. Gel image of *OXA-48* gene



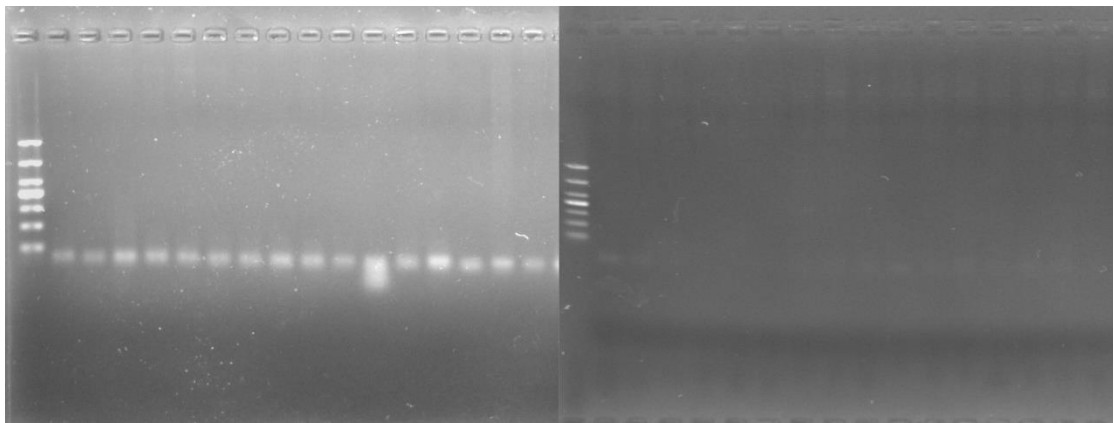
Supplementary Figure 9. Gel image of *GIM* gene



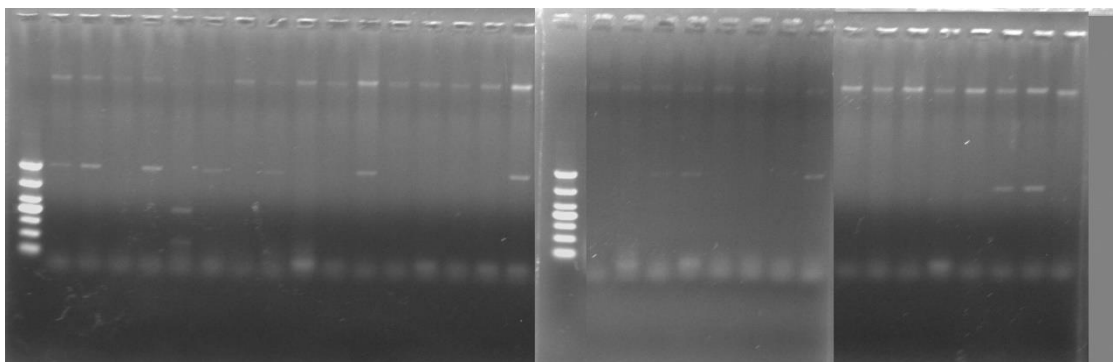
Supplementary Figure 10. Gel image of *BIC* gene



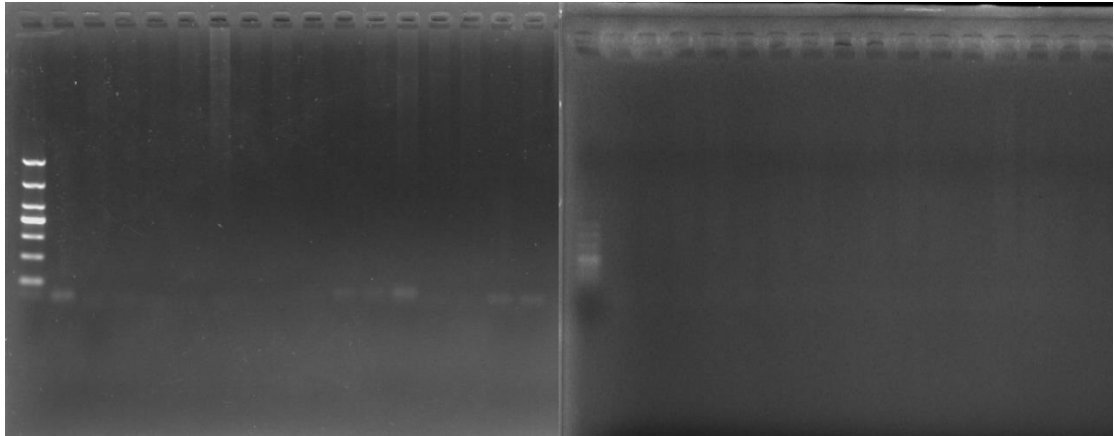
Supplementary Figure 11. Gel image of *SIM-1* gene



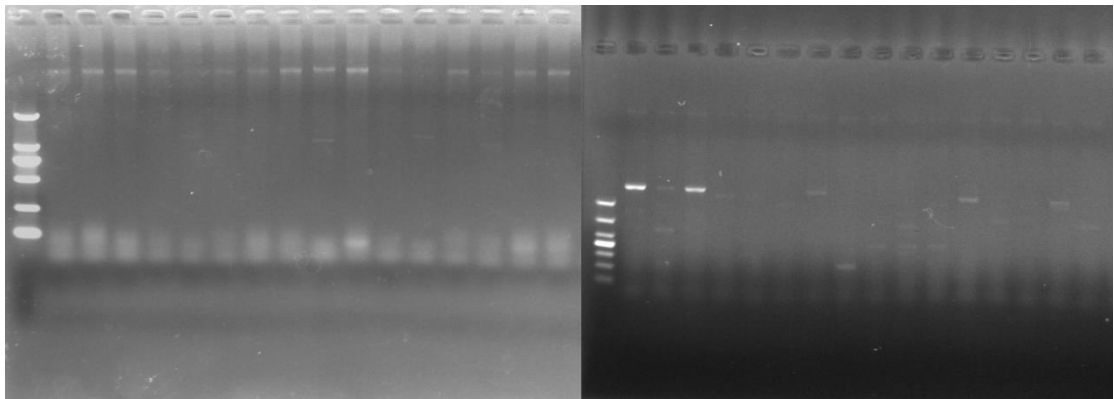
Supplementary Figure 12. Gel image of *NDM* gene



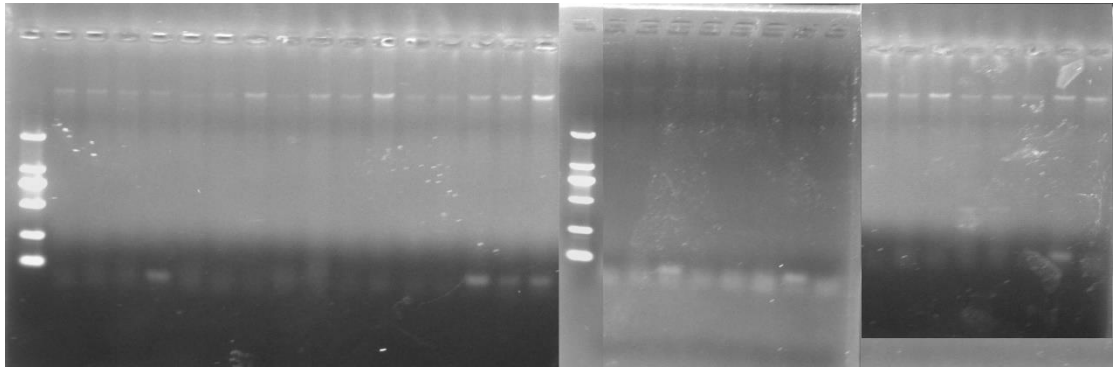
Supplementary Figure 13. Gel image of *DIM* gene



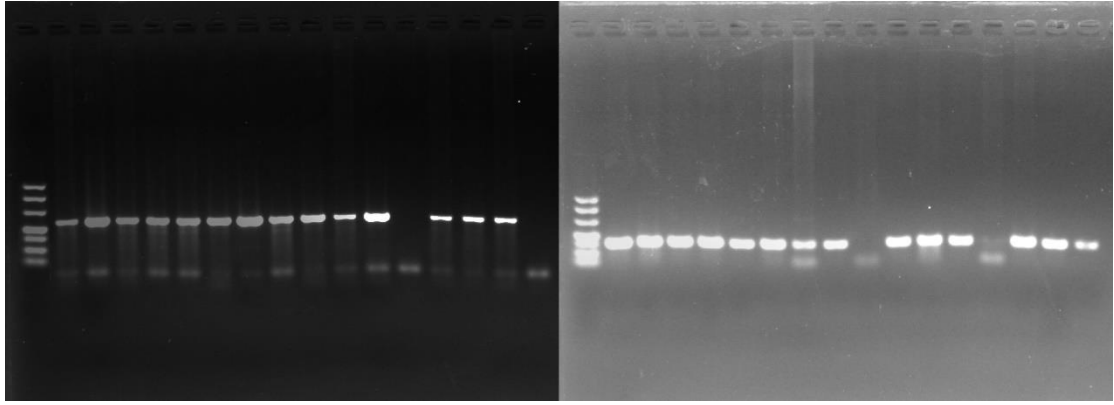
Supplementary Figure 14. Gel image of *KPC* gene



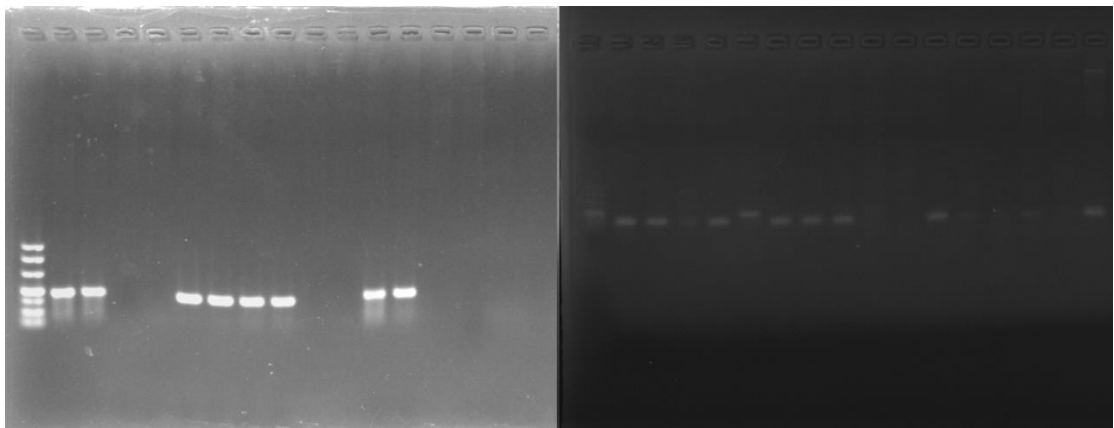
Supplementary Figure 15. Gel image of *GES* gene



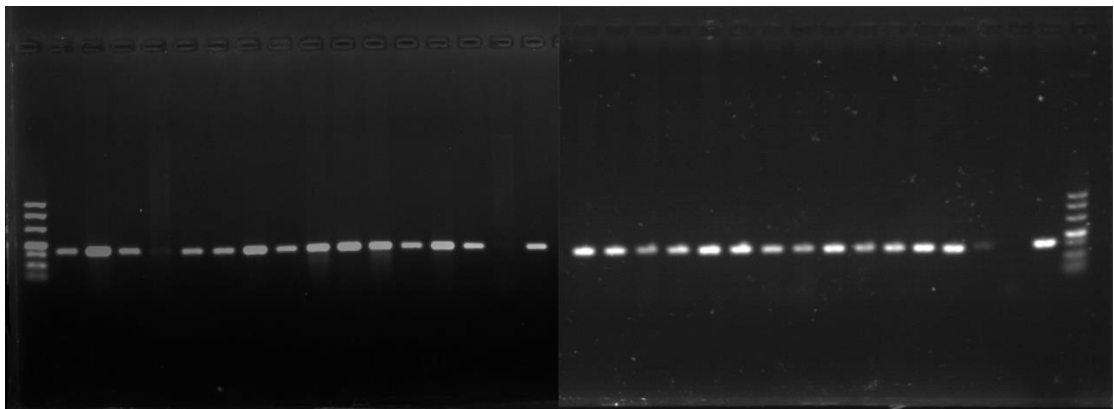
Supplementary Figure 16. Gel image of *IMI* gene



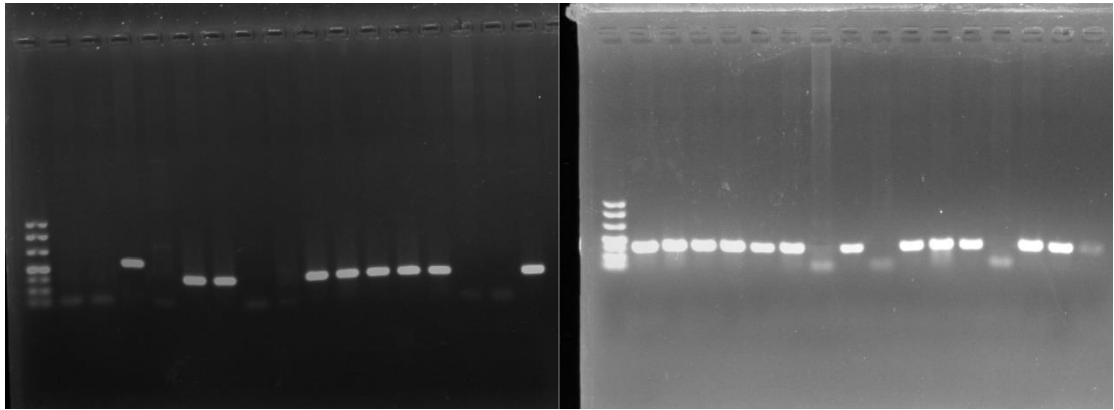
Supplementary Figure 17. Gel image of *cmIA* gene



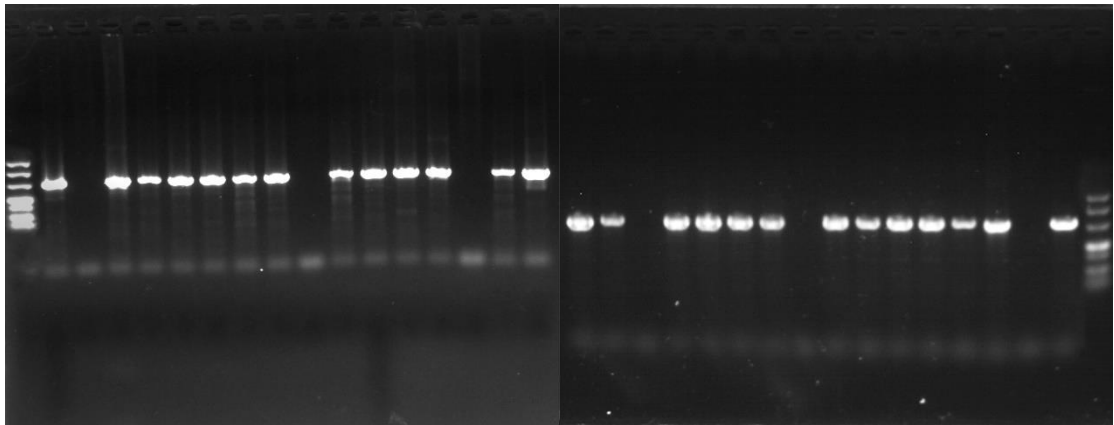
Supplementary Figure 18. Gel image of *floR* gene



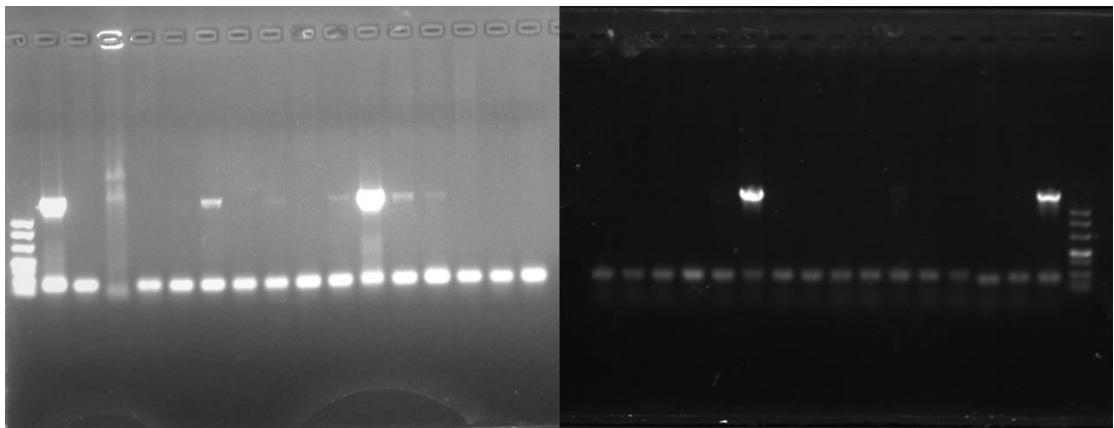
Supplementary Figure 19. Gel image of *sdeB* gene



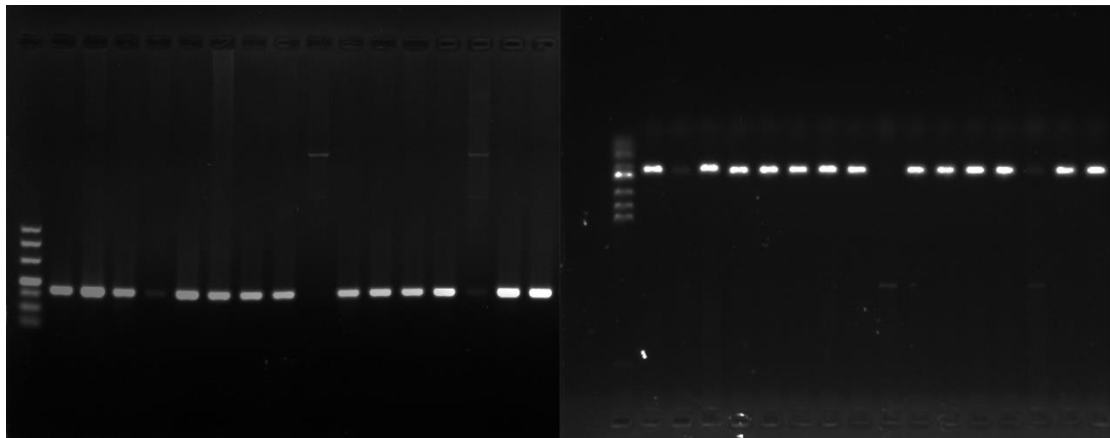
Supplementary Figure 20. Gel image of *sdeD* gene



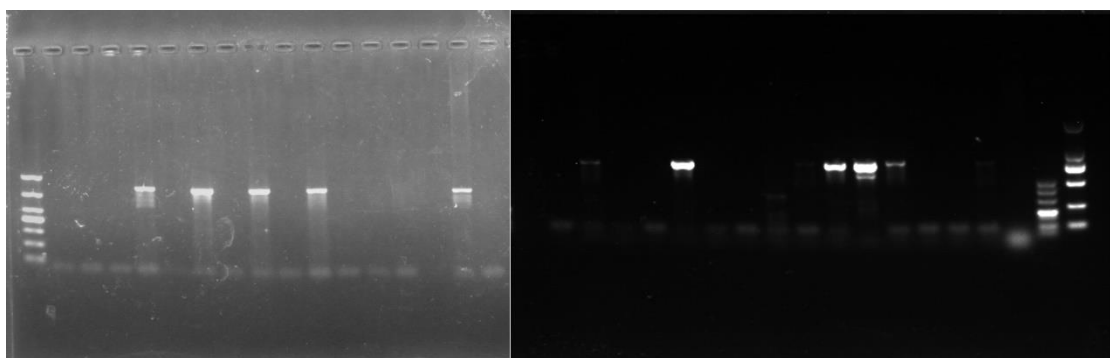
Supplementary Figure 21. Gel image of *sdeR* gene



Supplementary Figure 22. Gel image of *sdeS* gene

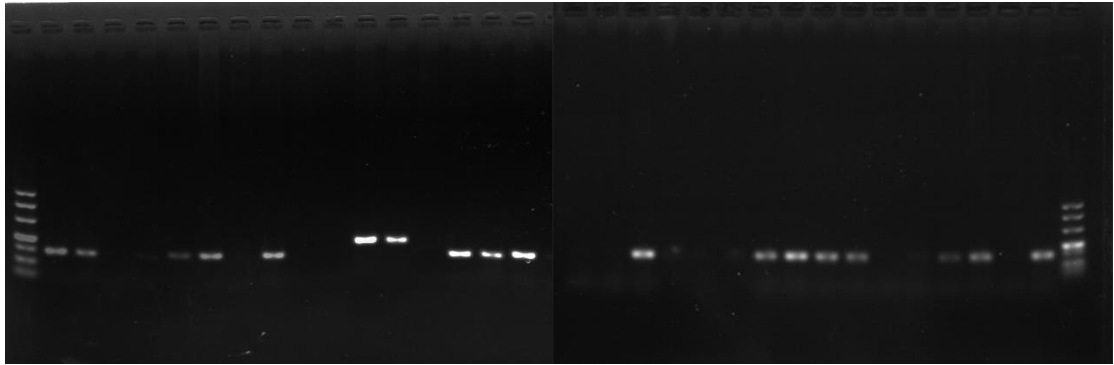


Supplementary Figure 23. Gel image of *sdeY* ene

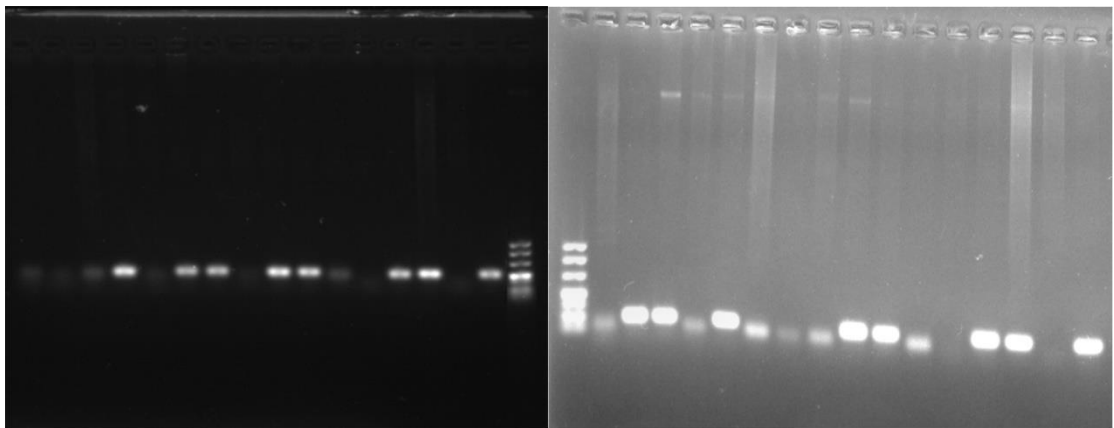


Supplementary Figure 24. Gel image of *hasF* gene

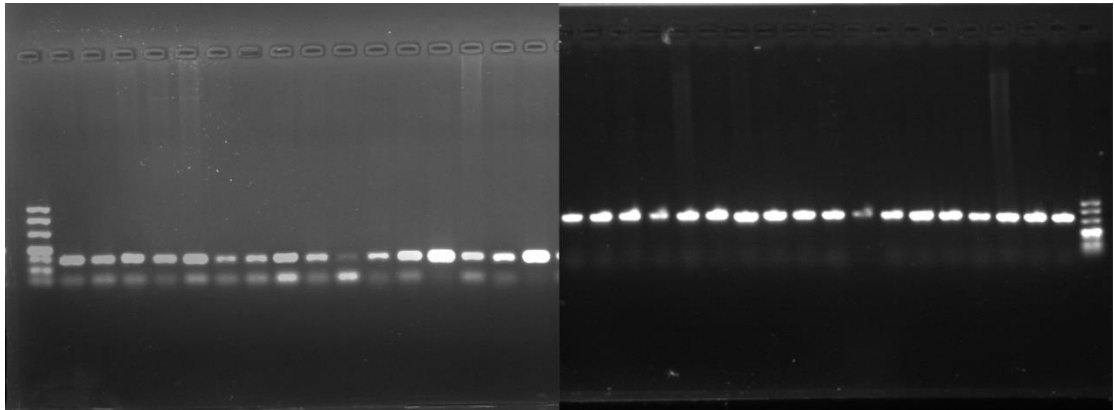
Virulence Genes



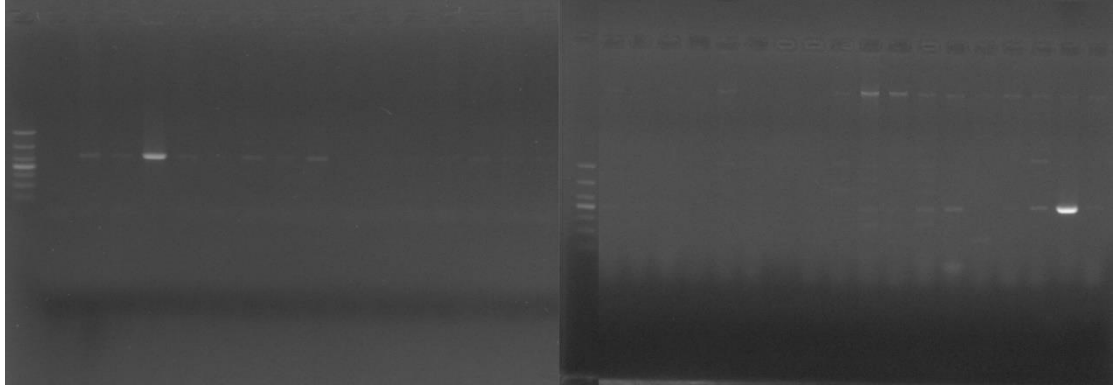
Supplementary Figure 25. Gel image of *fimA* gene



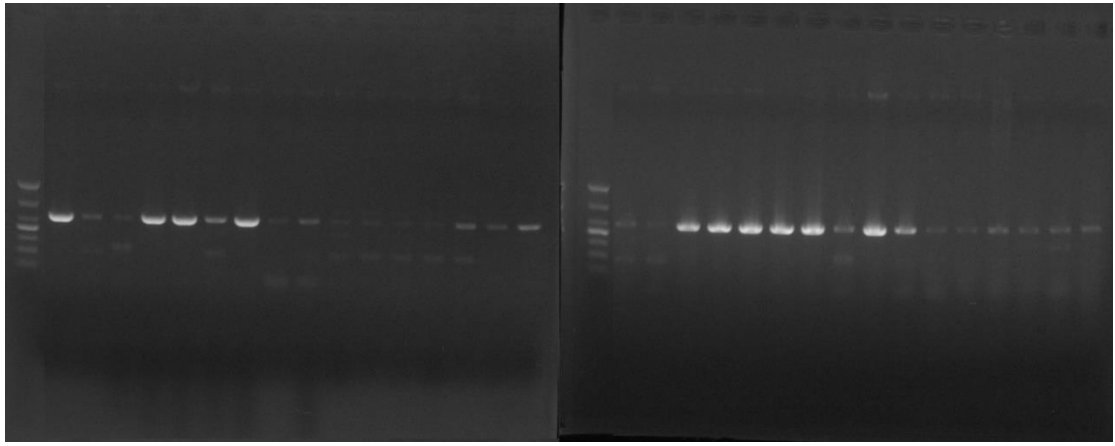
Supplementary Figure 26. Gel image of *fimC* gene



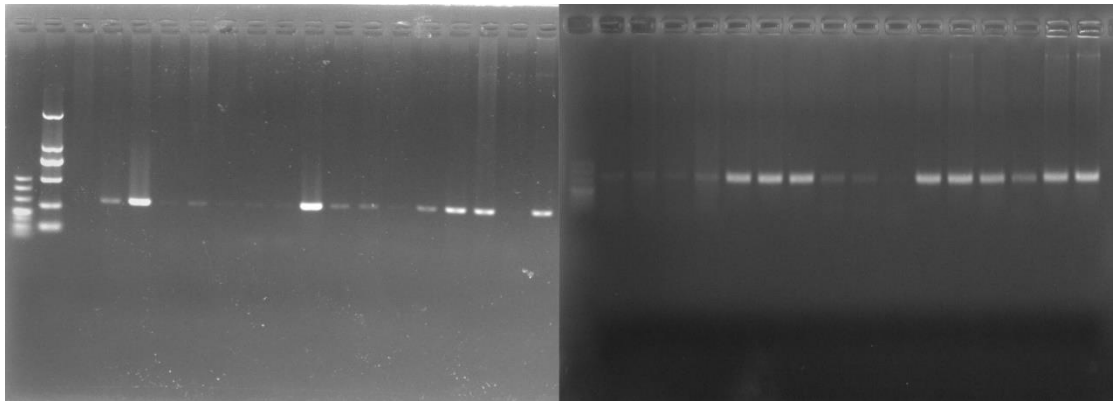
Supplementary Figure 27. Gel image of *flhD* gene



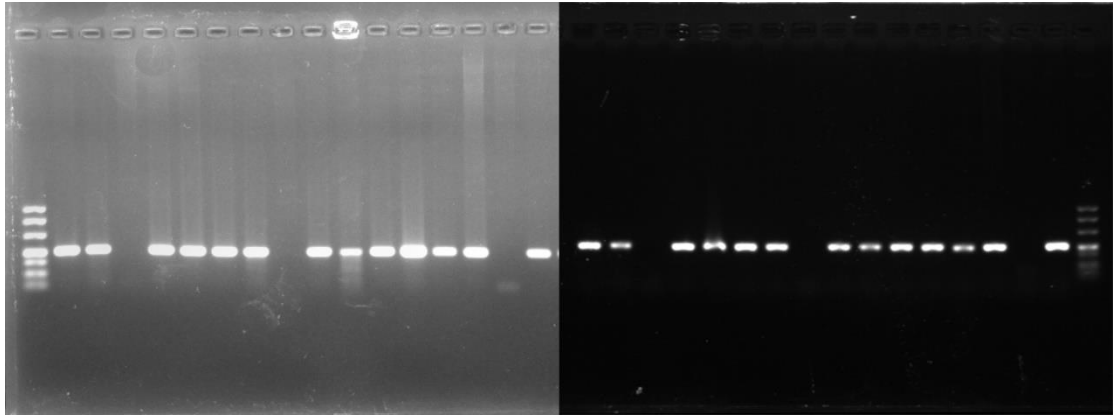
Supplementary Figure 28. Gel image of *fimH* gene



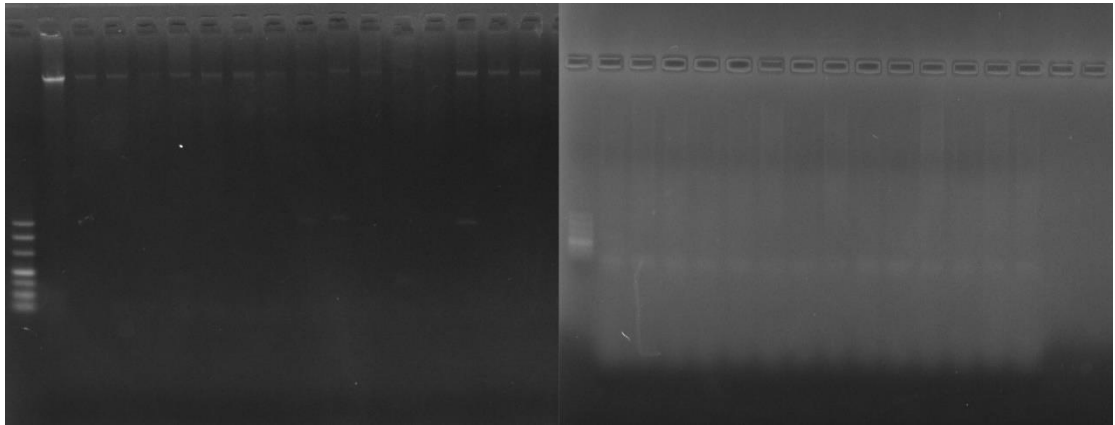
Supplementary Figure 29. Gel image of *kpn* gene



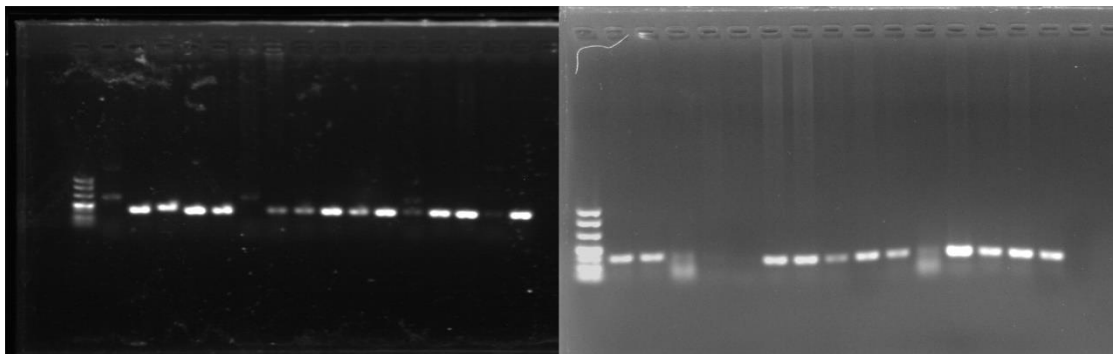
Supplementary Figure 30. Gel image of *mrkD* gene



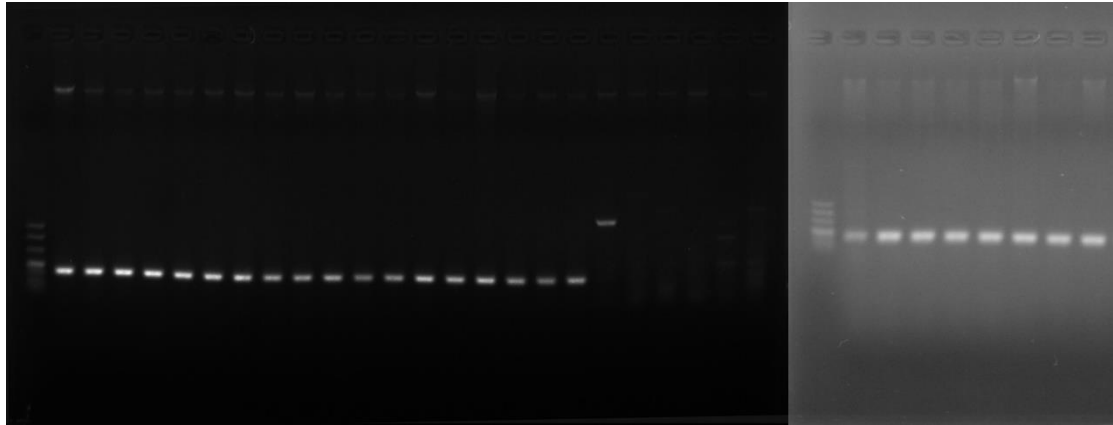
Supplementary Figure 31. Gel image of *rmpA* gene



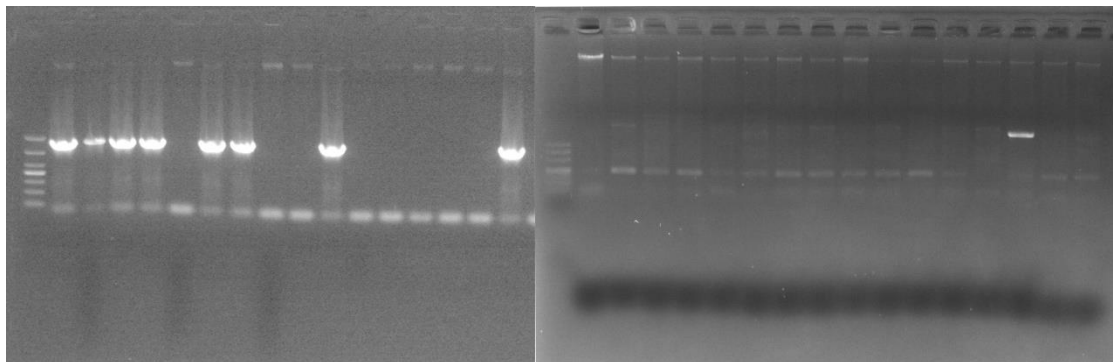
Supplementary Figure 32. Gel image of *magA* gene



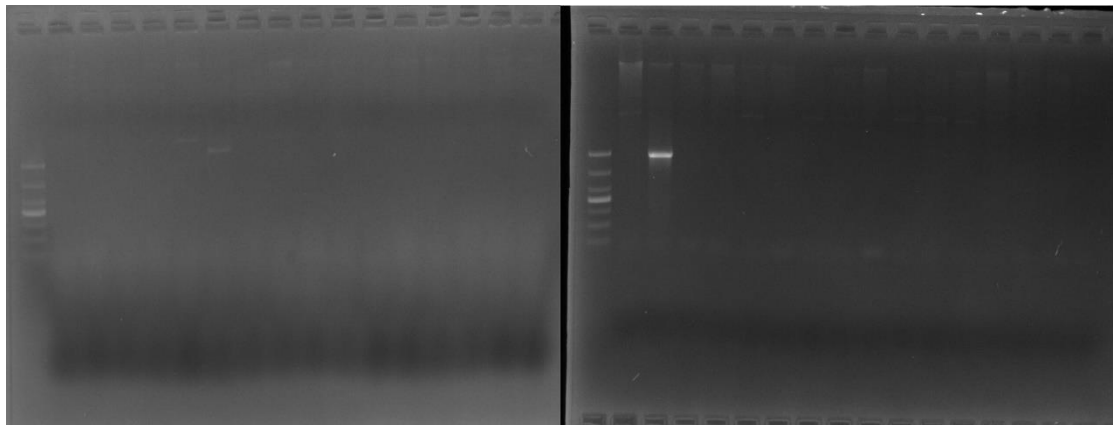
Supplementary Figure 33. Gel image of *bsmB* gene



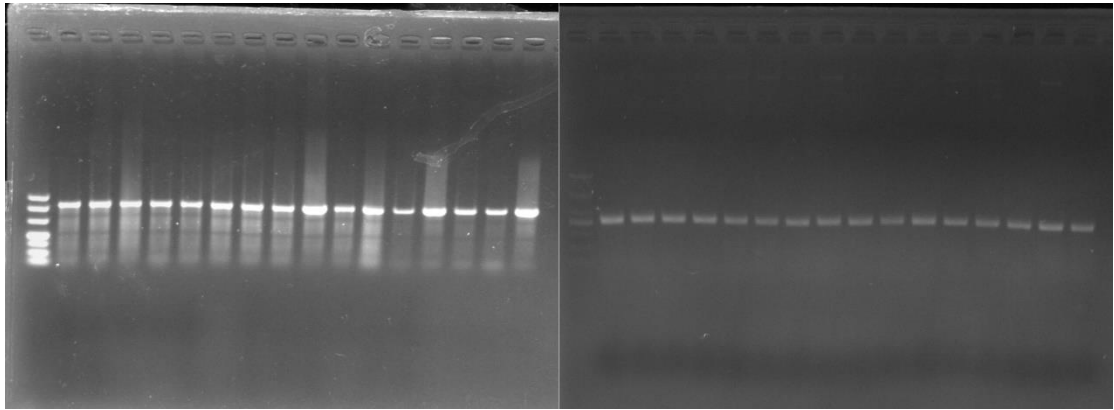
Supplementary Figure 34. Gel image of *ycfM* gene



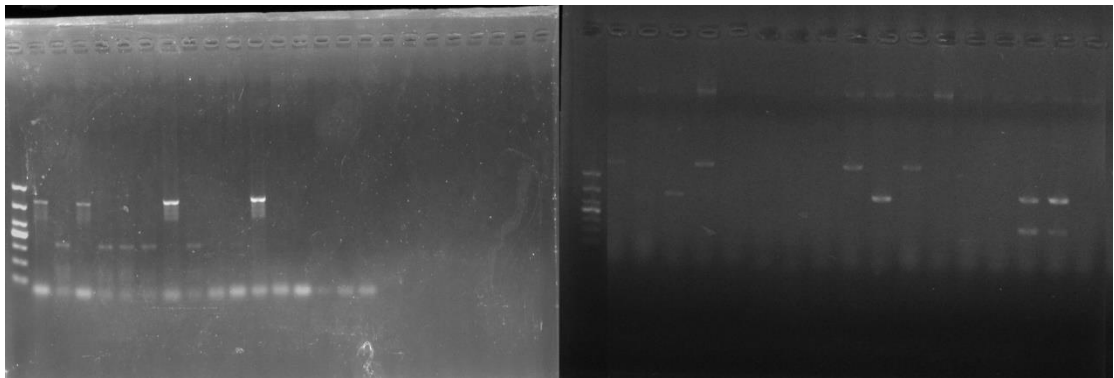
Supplementary Figure 35. Gel image of *allS* gene



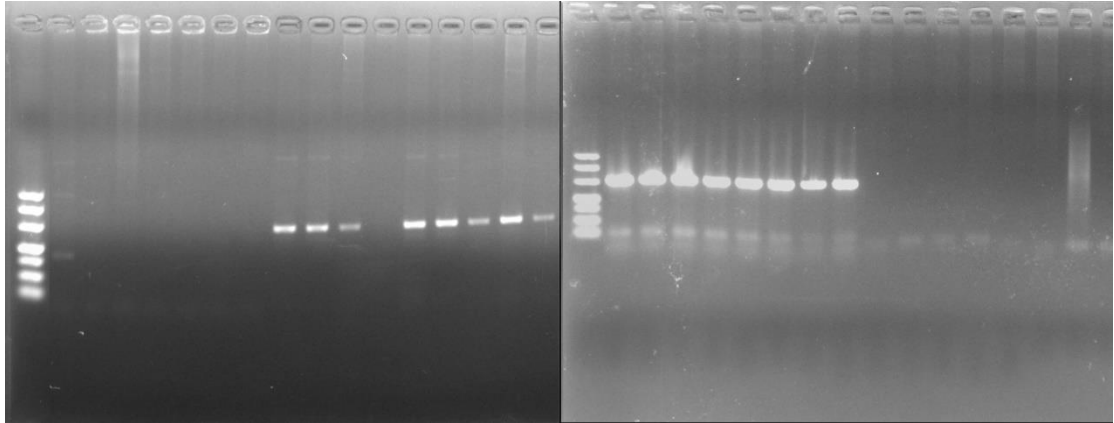
Supplementary Figure 36 Gel image of *iutA* gene



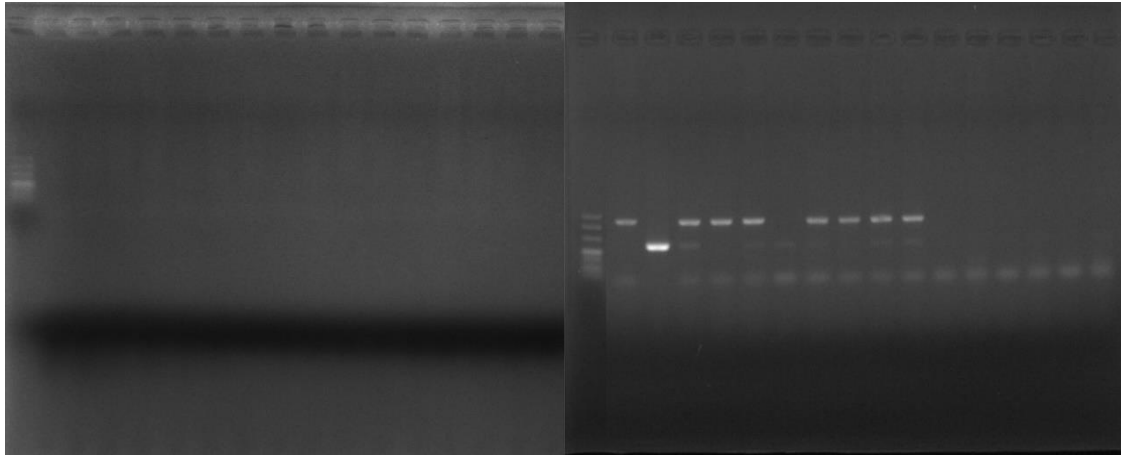
Supplementary Figure 37. Gel image of *entB* gene



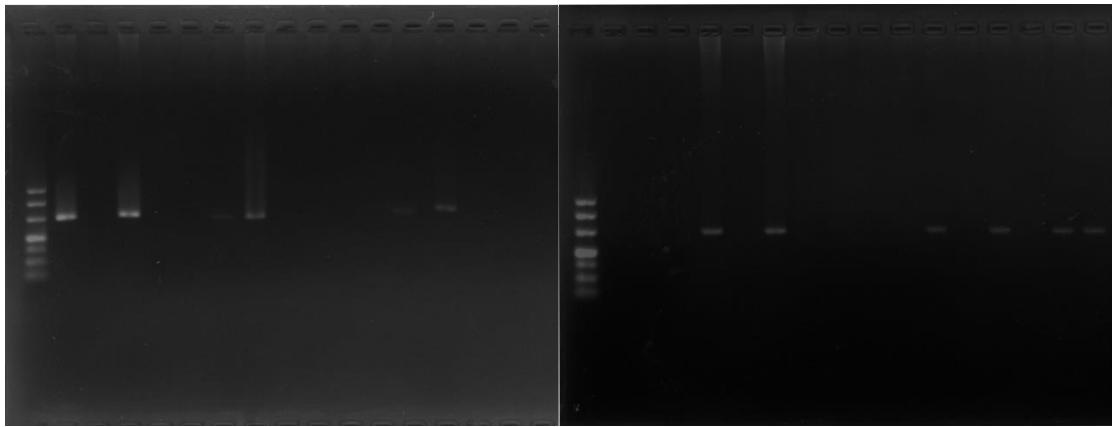
Supplementary Figure 38. Gel image of *fyuA* gene



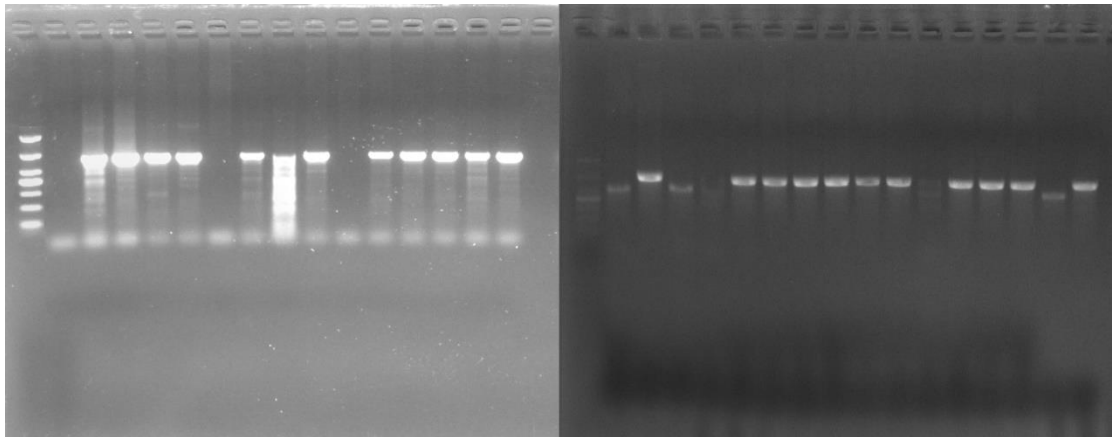
Supplementary Figure 39. Gel image of *ybtS* gene



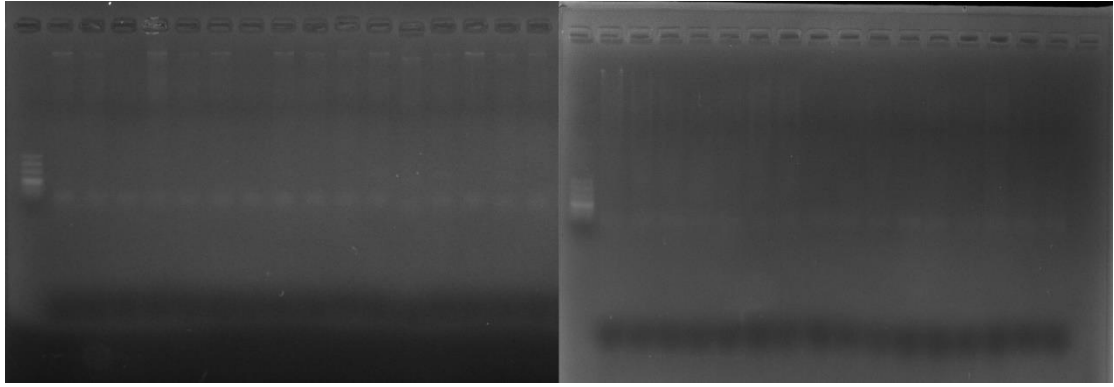
Supplementary Figure 40. Gel image of *irp-1* gene



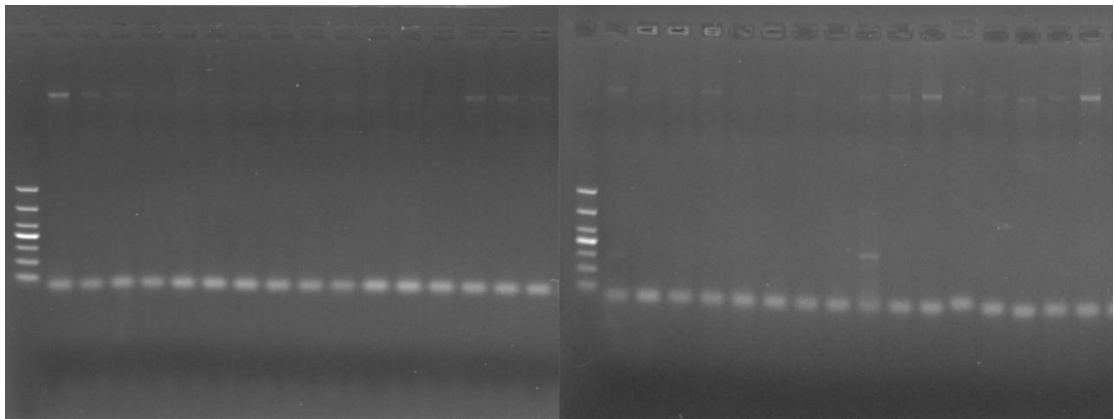
Supplementary Figure 41. Gel image of *irp-2* gene



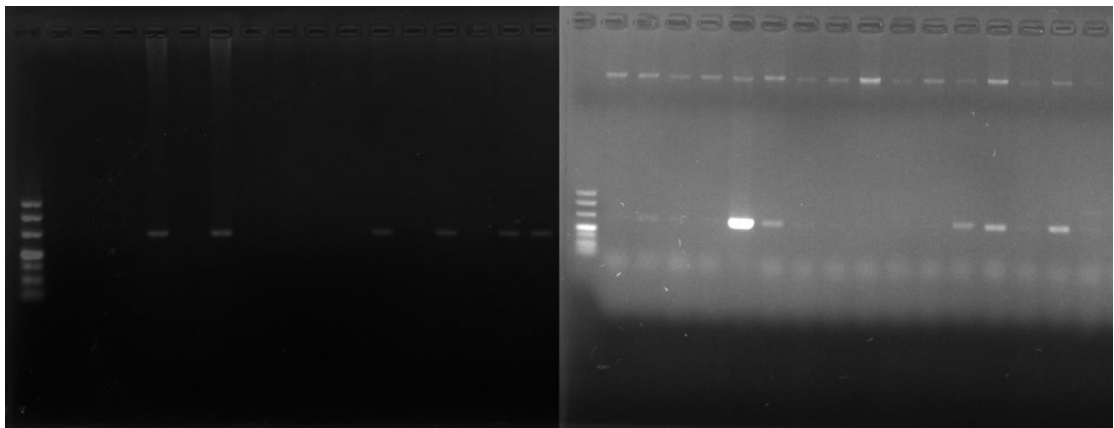
Supplementary Figure 42. Gel image of *kfu* gene



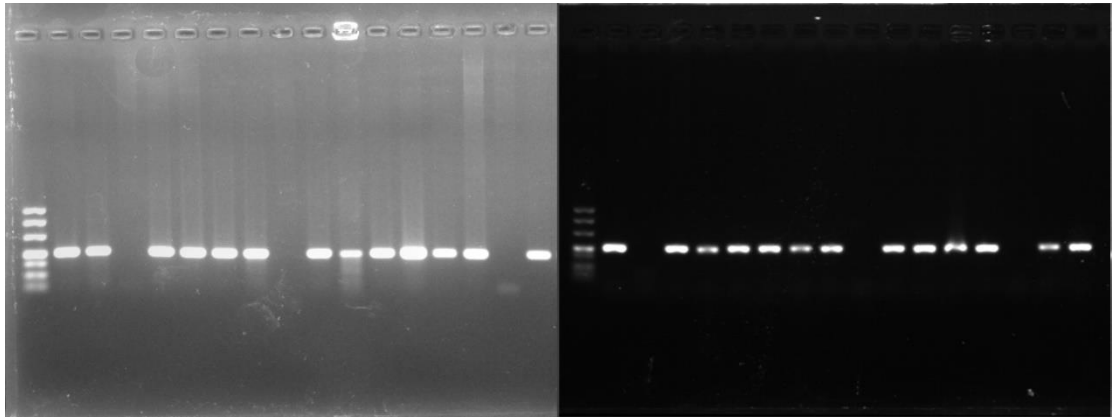
Supplementary Figure 43. Gel image of *iroN* gene



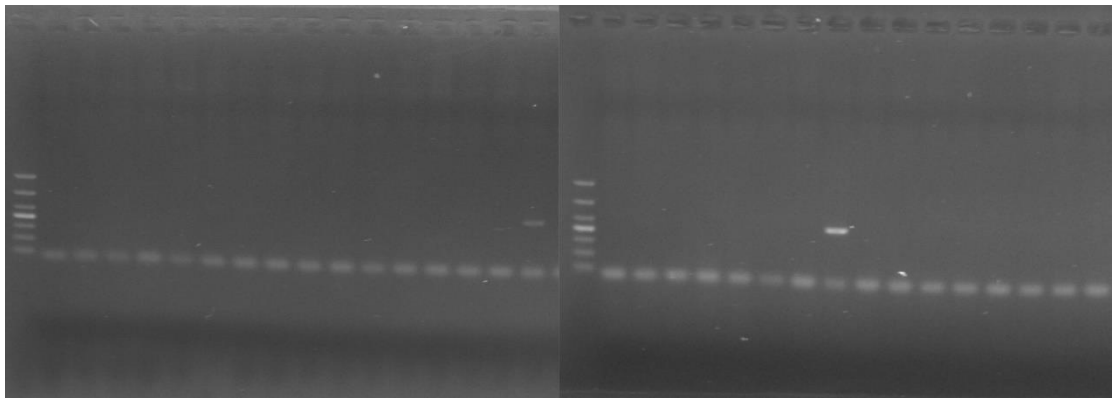
Supplementary Figure 44. Gel image of *K2* gene



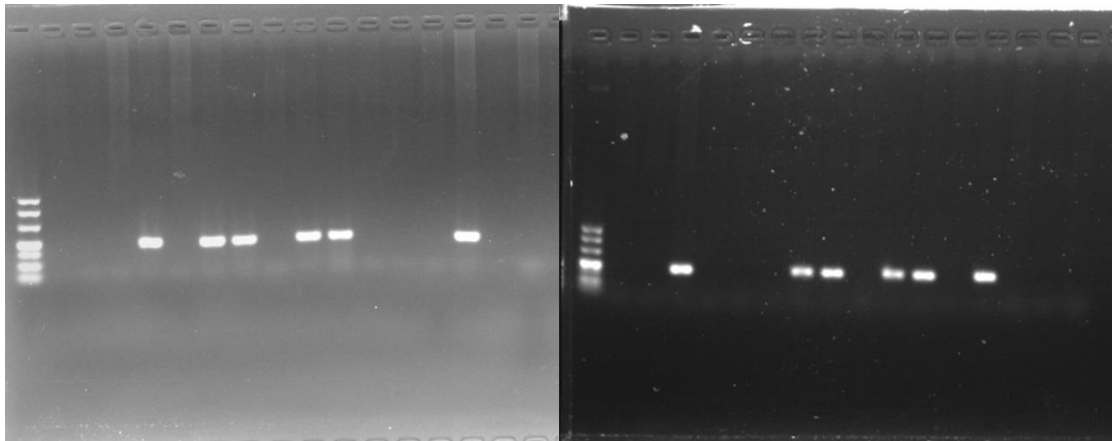
Supplementary Figure 45. Gel image of *traT* gene



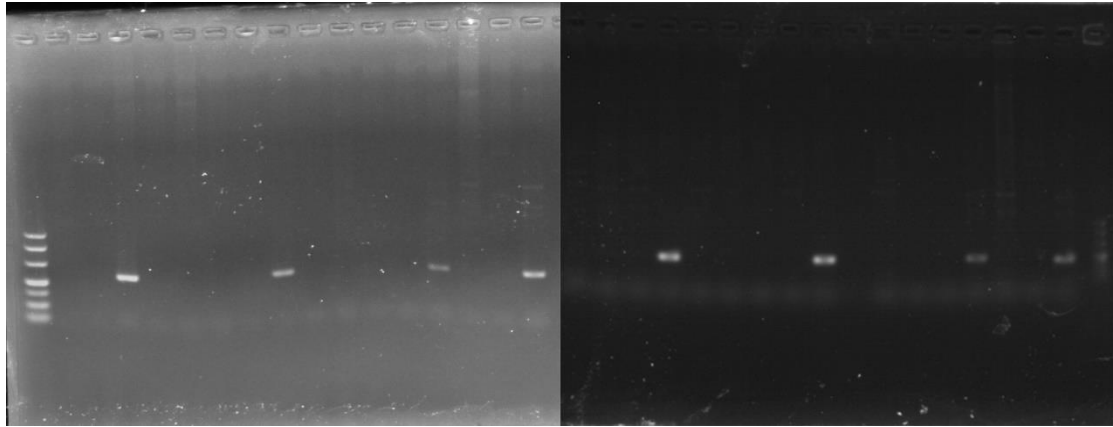
Supplementary Figure 46. Gel image of *pigP* gene



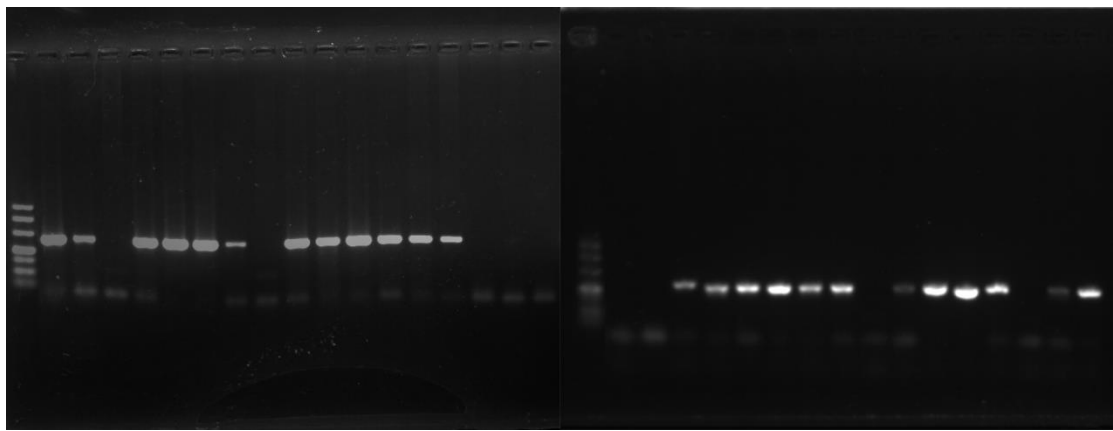
Supplementary Figure 47. Gel image of *pigA* gene



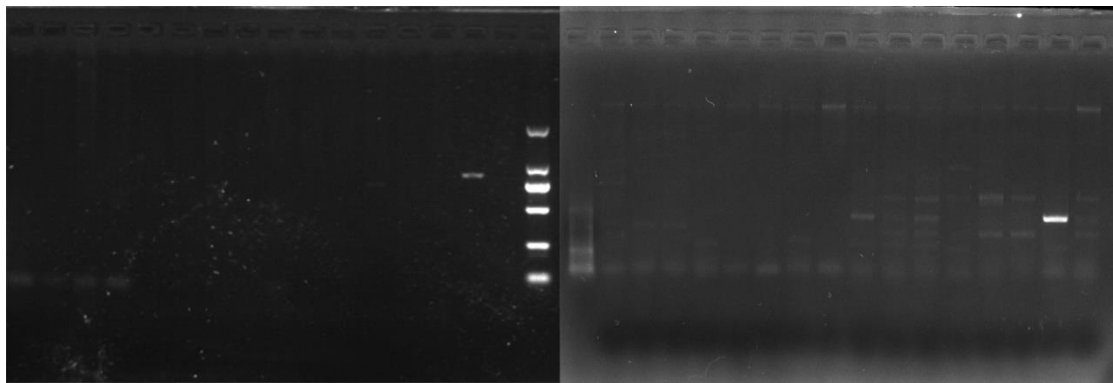
Supplementary Figure 48. Gel image of *pigC* gene



Supplementary Figure 49. Gel image of *shIA* gene



Supplementary Figure 50. Gel image of *shIB* gene



Supplementary Figure 51. Gel image of *hlyA* gene

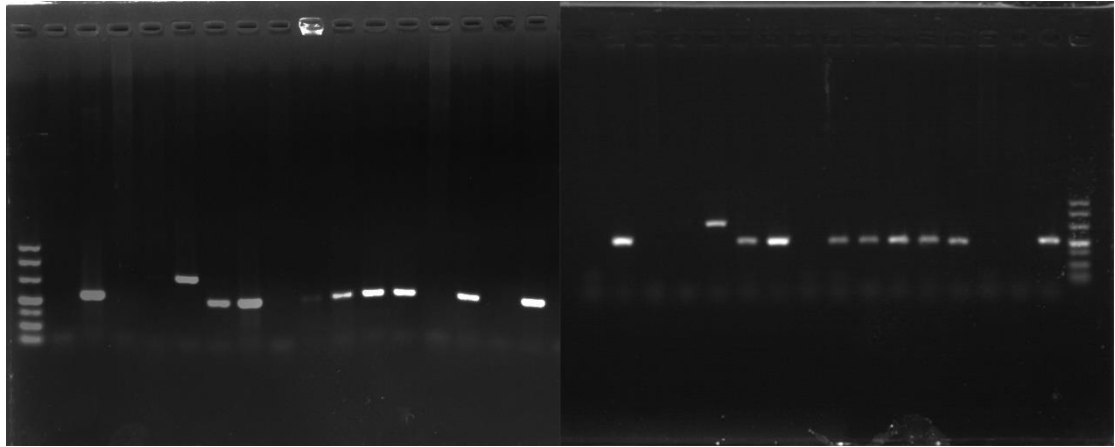


Figure 52. Gel image of *phIA* gene