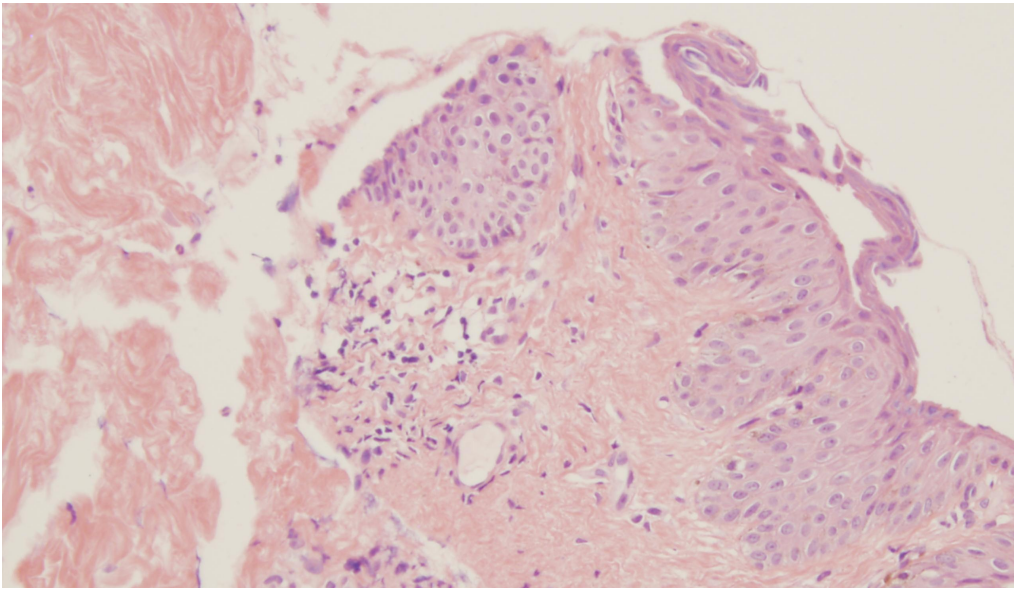
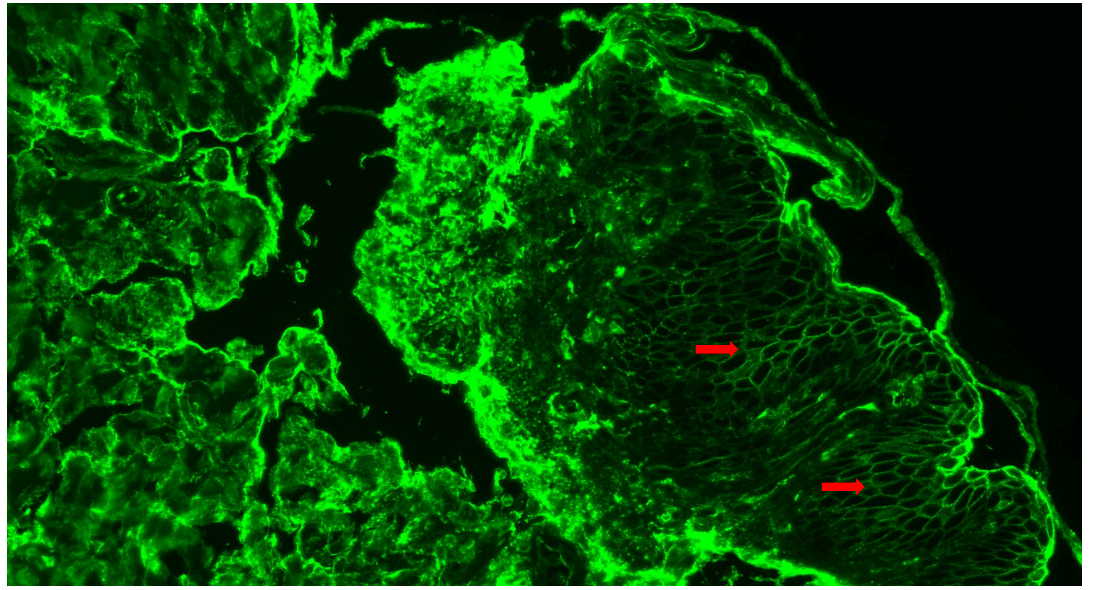


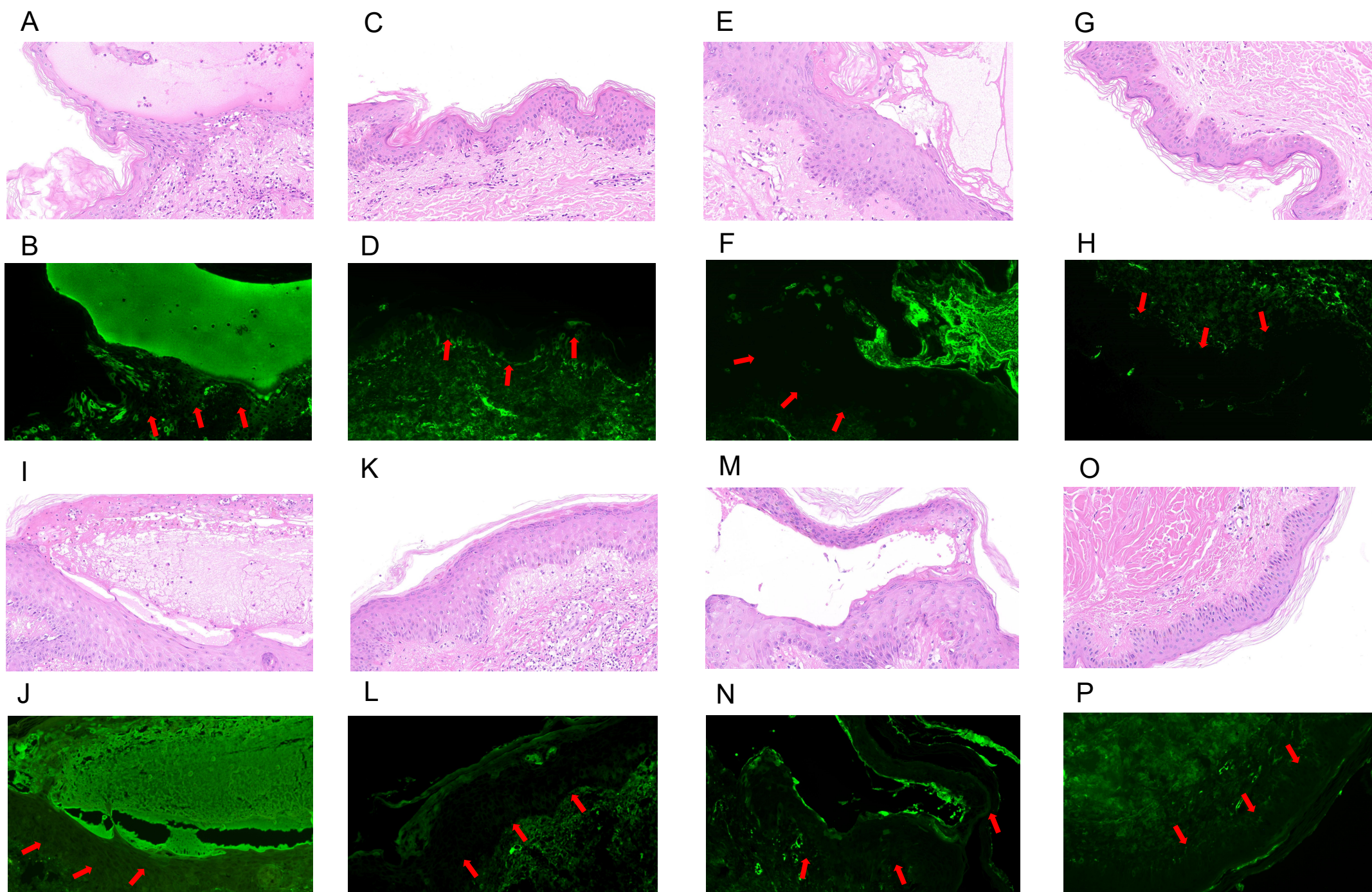
A



B



**Figure S1** Histopathological (A) and immunofluorescent staining (B) at lesion sites of pemphigus foliaceus. There is positive IgG staining at lesion sites of pemphigus foliaceus by DIF on paraffin tissue sections (B).



**Figure S2** Representative examples of histopathological and immunofluorescent staining for erythema multiforme, epidermolysis bullosa, herpes simplex and drug eruption. (A) H&E staining at lesion sites of erythema multiforme. (B) No IgG deposition is observed between spinous cells and along basement membrane zone by DIF on paraffin tissue sections at lesion sites of erythema multiforme. (C) H&E staining at perilesion sites of erythema multiforme. (D) No IgG deposition is observed between spinous cells and along basement membrane zone by DIF on paraffin tissue sections at perilesion sites of erythema multiforme. (E) H&E staining at lesion sites of epidermolysis bullosa. (F) No IgG deposition is observed between spinous cells and along basement membrane zone by DIF on paraffin tissue sections at lesion sites of epidermolysis bullosa. (G) H&E staining at perilesion sites of epidermolysis bullosa. (H) No IgG deposition is observed between spinous cells and along basement membrane zone by DIF on paraffin tissue sections at perilesion sites of epidermolysis bullosa. (I) H&E staining at lesion sites of herpes simplex. (J) No IgG deposition is observed between spinous cells and along basement membrane zone by DIF on paraffin tissue sections at lesion sites of herpes simplex. (K) H&E staining at perilesion sites of herpes simplex. (L) No IgG deposition is observed between spinous cells and along basement membrane zone by DIF on paraffin tissue sections at perilesion sites of herpes simplex. (M) H&E staining at lesion sites of drug eruption. (N) No IgG deposition is observed between spinous cells and along basement membrane zone by DIF on paraffin tissue sections at lesion sites of drug eruption. (O) H&E staining at perilesion sites of drug eruption. (P) No IgG deposition is observed between spinous cells and along basement membrane zone by DIF on paraffin tissue sections at perilesion sites of drug eruption.