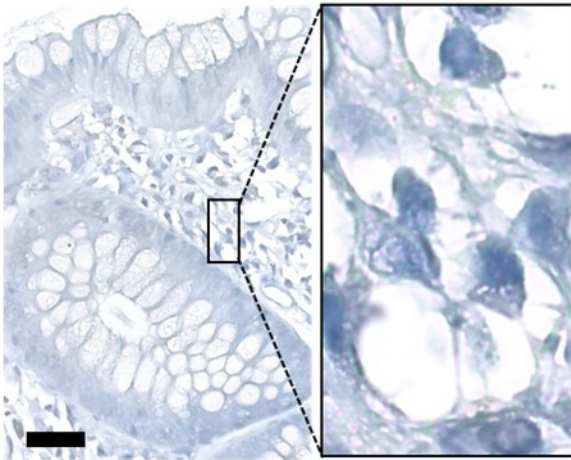
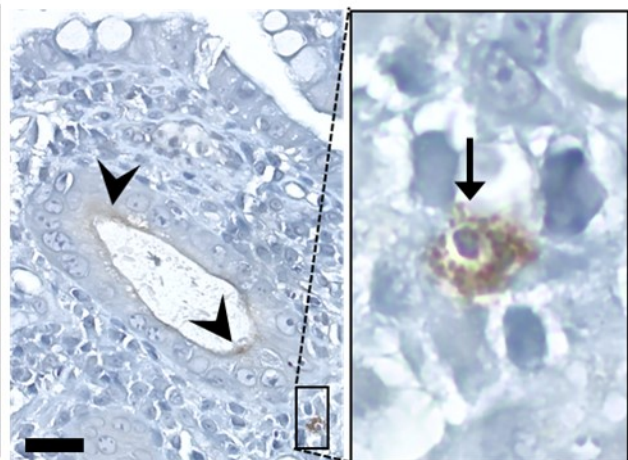


A Colon, Non-Inflamed

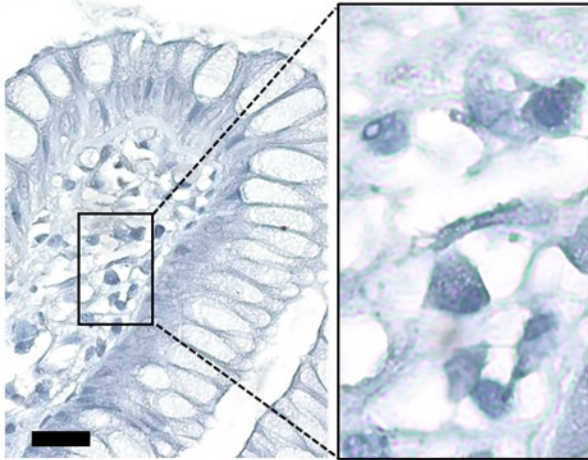


B Colon, Inflamed

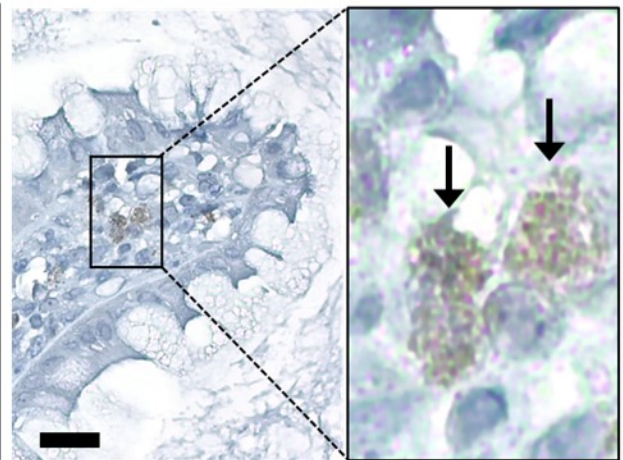


Supplemental Figure 1. Histology demonstrating chronic active inflammation and PSMA IHC showing lack of PSMA positive cells (black arrows) in non-inflamed sections (subfigure A) compared to increased PSMA positive cells in non-inflamed colon sections (subfigure B).

A Colon, Non-Inflamed



B Colon, Inflamed



Supplemental Figure 2. Lack of PSMA expression on IHC in non-inflamed tissue (subfigure A) compared to IHC with occasional increased PSMA expression in the apical epithelial membrane (black arrowheads) and numerous PSMA positive cells throughout the mucosa (black arrows) in inflamed colon (subfigure B)