

Table S1. Esohisto consensus guidelines⁹

Criterion	Severity score		
	0 (<15%)	1 (15%-30%)	2 (>30%)
Basal cell layer hyperplasia	0 (<15%)	1 (15%-30%)	2 (>30%)
Papillary elongation	0 (<50%)	1 (50%-75%)	2 (>75%)
Dilation of intercellular spaces	0 (absent)	1 (small; diameter <1 lymphocyte)	2 (large; diameter ≥1 lymphocyte)
Infiltration of inflammatory cells			
Intraepithelial eosinophils	0 (absent)	1 (1-2 cells)	2 (>2 cells)
Intraepithelial neutrophils	0 (absent)	1 (1-2 cells)	2 (>2 cells)
Intraepithelial mononuclear cells	0 (0-9 cells)	1 (10-30 cells)	2 (>30 cells)

Table S2. Patient's clinical symptoms

Clinical symptoms	Overall (n = 92)	GERD (n = 23)	Non-GERD (n = 69)	p-Value
Heartburn, n (%)	43 (46.7)	10 (43.5)	33 (47.8)	0.904
Regurgitation, n (%)	69 (75.0)	17 (73.9)	52 (75.4)	1
Belching, n (%)	60 (65.2)	17 (73.9)	43 (62.3)	0.448
Acid reflux, n (%)	34 (37.0)	10 (43.5)	24 (34.8)	0.618
Epigastric pain, n (%)	35 (38.0)	5 (21.7)	30 (43.5)	0.107
Vomiting, n (%)	5 (5.4)	2 (8.7)	3 (4.3)	0.596
Nausea, n (%)	16 (17.4)	6 (26.1)	10 (14.5)	0.217
Bloating, n (%)	47 (51.1)	9 (39.1)	38 (55.1)	0.278
Noncardiac chest pain, n (%)	26 (28.3)	6 (26.1)	20 (29.0)	1
Dysphagia, n (%)	14 (15.2)	1 (4.3)	13 (18.8)	0.176
Weight loss, n (%)	10 (10.9)	1 (4.3)	9 (13.0)	0.442
Chronic coughing, n (%)	8 (8.7)	2 (8.7)	6 (8.7)	1
Sore throat, n (%)	31 (33.7)	6 (26.1)	25 (36.2)	0.524
Dyspnea, n (%)	24 (26.1)	5 (21.7)	19 (27.5)	0.784
Globus sensation, n (%)	40 (43.5)	7 (30.4)	33 (47.8)	0.225

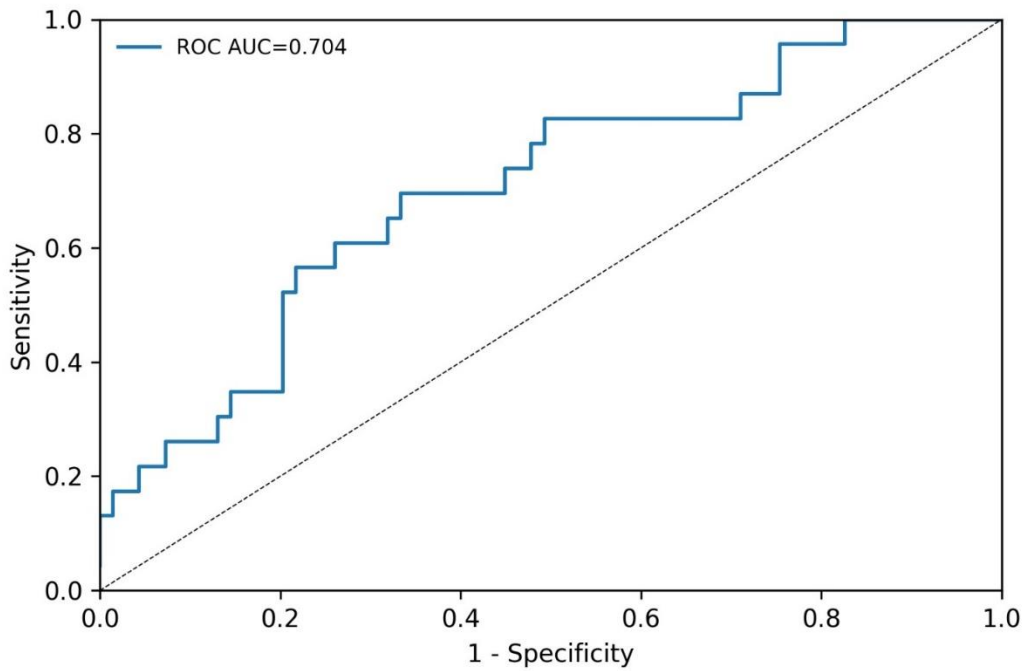


Figure S1. The received-operating characteristic curve of the logistic regression for GERD diagnosis.

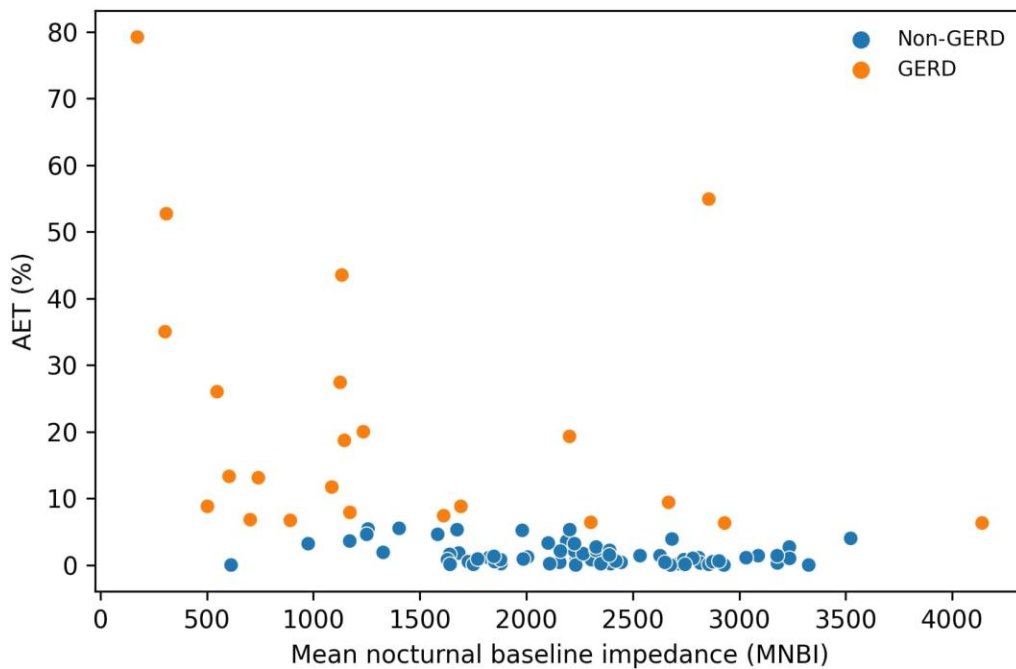


Figure S2. Correlation between mean nocturnal baseline impedance and acid exposure time