

Supplementary Figure Legend

Figure 1. Survival analysis curves of different inflammation-related biomarkers before surgery in patients with gallbladder carcinoma after radical resection.

(A-E). The survival analysis curves of NLR, PLR, LMR, SII, SIRI in the training set. (F-J). The survival analysis curves of NLR, PLR, LMR, SII, SIRI in the testing set.

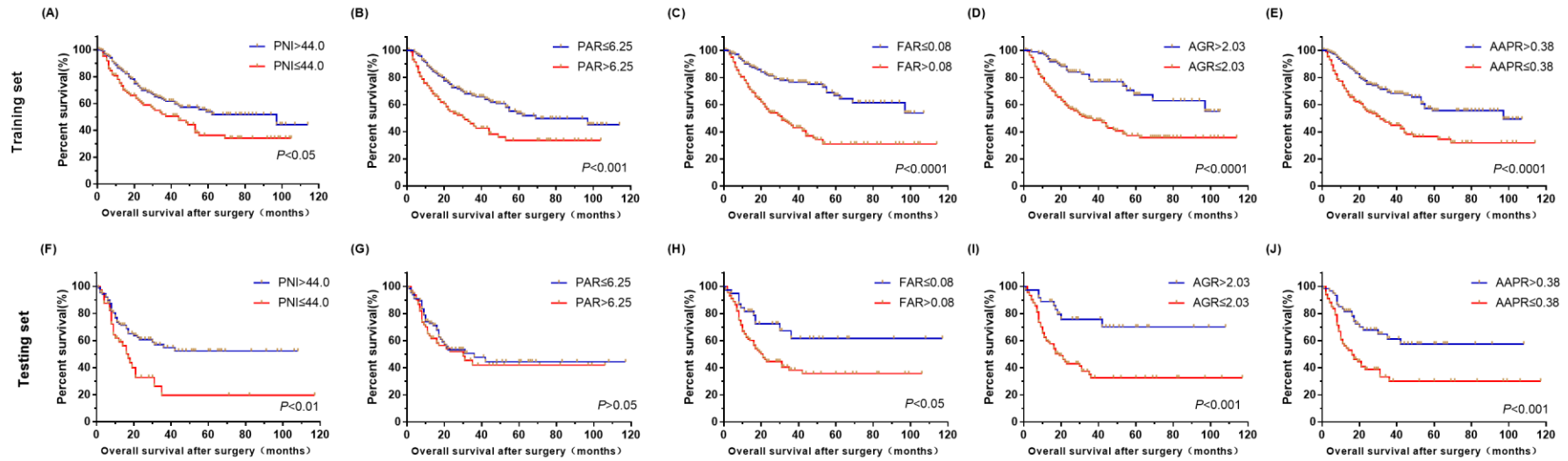


Figure 2. Survival analysis curves of different albumin-related biomarkers before surgery in patients with gallbladder carcinoma after radical resection.

(A-E). The survival analysis curves of PNI, PAR, FAR, AGR, AAPR in the training set. (F-J). The survival analysis curves of PNI, PAR, FAR, AGR, AAPR in the testing set.

Supplementary table 1. Comparison of the training and testing sets for GBC after radical resection

	Training set (%)	Testing set (%)	χ^2	<i>P</i>
Sex				
Male	92(30.7)	39(30.7)	0.000	0.993
Female	208(69.3)	88(69.3)		
Age (year)				
≤60	134(44.7)	45(35.4)	3.125	0.077
>60	166(55.3)	82(64.6)		
NLR				
<2.2	136(45.3)	48(37.8)	2.068	0.150
≥2.2	164(54.7)	79(62.2)		
PLR				
≤155.3	158(52.7)	68(53.5)	0.028	0.868
>155.3	142(47.3)	59(46.5)		
LMR				
>3.8	188(62.7)	70(55.1)	2.126	0.145
≤3.8	112(37.3)	57(44.9)		
SII				
≤399.7	110(36.7)	35(27.6)	3.300	0.069
>399.7	190(63.3)	92(72.4)		
SIRI				
≤0.95	199(66.3)	76(59.8)	1.640	0.200
>0.95	101(33.7)	51(40.2)		
PNI				
>44.0	190(63.3)	86(67.7)	0.750	0.386
≤44.0	110(36.7)	41(32.3)		
PAR				
≤6.25	194(64.7)	71(55.9)	2.909	0.088
>6.25	106(35.3)	56(44.1)		
FAR				
≤0.08	134(44.7)	48(37.8)	1.723	0.189
>0.08	166(55.3)	79(62.2)		
AGR				
>2.03	177(59.0)	75(59.1)	0.000	0.992
≤2.03	123(41.0)	52(40.9)		
AAPR				
>0.38	165(55.0)	60(47.2)	2.153	0.142
≤0.38	135(45.0)	67(52.8)		
CEA (ng/ml)				
≤5.0	240(80.0)	97(76.4)	0.704	0.402
>5.0	60(20.0)	30(23.6)		
CA19-9(U/ml)				
≤39.0	217(72.3)	87(68.5)	0.638	0.424
>39.0	83(27.7)	40(31.5)		

CA125(U/ml)				
≤35.0	229(76.3)	89(70.1)	1.836	0.175
>35.0	71(23.7)	38(29.9)		
TBIL(μmol/L)				
≤34.1	273(91.0)	114(89.8)	0.161	0.689
>34.1	27(9.0)	13(10.2)		
Unexpected gallbladder carcinoma				
No	207(69.0)	90(70.9)	0.147	0.702
Yes	93(31.0)	37(29.1)		
Gallstones				
No	128(42.7)	44(34.6)	2.386	0.122
Yes	172(57.3)	83(65.4)		
Gallbladder polyps				
No	277(92.3)	117(92.1)	0.005	0.942
Yes	23(7.7)	10(7.9)		
Tumor location				
Neck	46(15.3)	21(16.5)		
Body and bottom	184(61.3)	80(63.0)	0.447	0.800
All gallbladder	70(23.3)	26(20.5)		
Morphologic grape				
Massive type	103(34.3)	47(37.0)		
Infiltrating type	152(50.7)	65(51.2)	0.832	0.660
Hybrid type	45(15.0)	15(11.8)		
Tumor differentiation				
Well	47(15.7)	21(16.5)		
Moderate	148(49.3)	59(46.5)	0.296	0.863
Poor	105(35.0)	47(37.0)		
Liver involvement				
No	223(74.3)	86(67.7)	1.953	0.162
Yes	77(25.7)	41(32.3)		
Major vascular invasion				
No	287(95.7)	120(94.5)	0.278	0.598
Yes	13(4.3)	7(5.5)		
Perineural invasion				
No	274(91.3)	111(87.4)	1.555	0.212
Yes	26(8.7)	16(12.6)		
Microvascular invasion				
No	285(95.0)	127(100)	6.581	0.010
Yes	15(5.0)	0(0)		
AJCC 8th edition T stage				
T ₁₋₂	61(20.3)	24(18.9)		
T ₃	222(74.0)	92(72.4)	1.342	0.511
T ₄	17(5.7)	11(8.7)		
AJCC 8th edition N stage				

N0	225(75.0)	89(70.1)	1.110	0.292
N ₁₋₂	75(25.0)	38(29.9)		
AJCC 8th edition TNM stage				
I-II	57(19.0)	23(18.1)		
III	226(75.3)	92(72.4)	2.017	0.365
IVA	17(5.7)	12(9.4)		