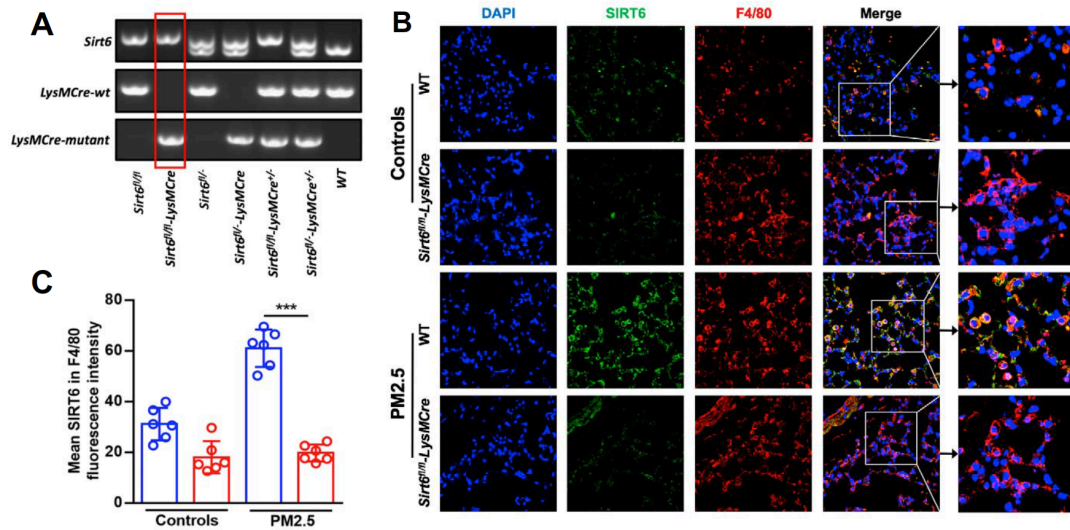


Supplementary file

Supplementary Figure 1



Supplementary Figure 1. The generation of *Sirt6*^{fl/fl}-*LysMCre* mice. Genotyping was performed by PCR using mouse tail genomic DNA (A). Representative immunofluorescence images of SIRT6 expression in alveolar macrophages were revealed using F4/80 in lung tissues of mice ($\times 200$) (B); Semiquantification of immunofluorescence images was done using Image Pro 6.1 software (C). Data are presented as Mean \pm SEM of three independent experiments (n=6 for each group).

****P*<0.001.