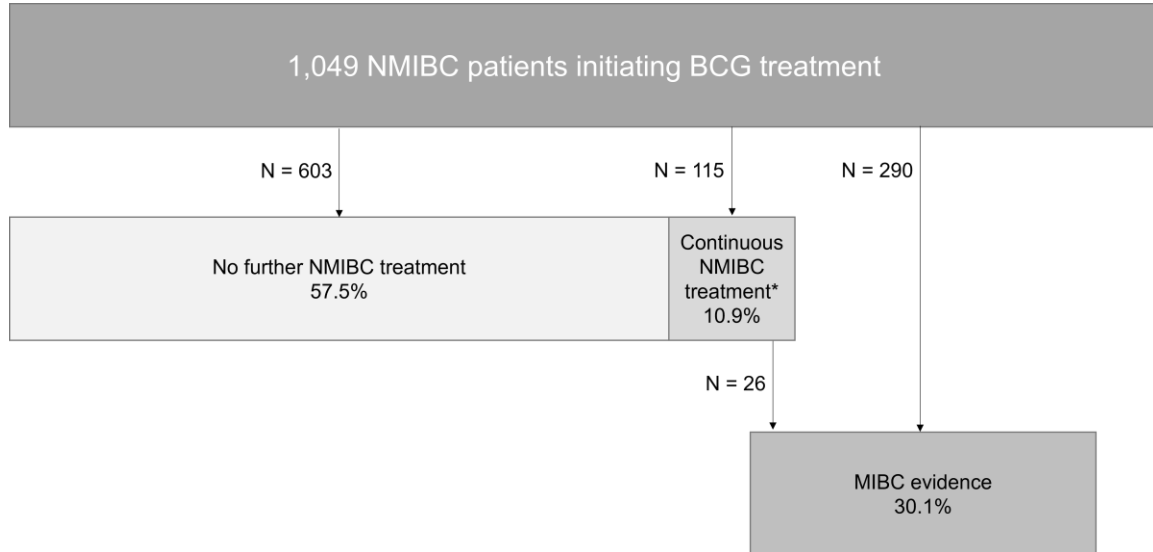


## Supplementary data

**Figure S1** Patient subgroups based on disease status after last BCG administration



**Notes:**

\*As potential indicator of NMIBC recurrence

145 patients (13.8%) had a cystectomy after last BCG, including 104 patients who also presented NMIBC recurrence or MIBC evidence and 41 patients who had a cystectomy immediately after BCG.