

Supplementary Table S1. Association between the clustering of the *Mycobacterium tuberculosis* isolates based on spoligotyping and demographic or drug-resistance profiles

Characteristics	Total N (%)	Clustered N (%)	Odds ratio (95% CI)	P-Value
Case types				
new patients	170(49.0)	151(88.8)	Reference	-
relapsed patients	177(51.0)	162(91.5)	1.36(0.67-2.77)	0.399
Age group (yrs)				
≤30	74(21.3)	68(91.9)	Reference	-
30-59	119(34.3)	102(85.7)	0.53 (0.20-1.41)	0.203
≥60	154(44.4)	143(92.9)	1.15(0.41-3.23)	0.795
Sex				
female	186(53.6)	167(89.8)	Reference	-
male	161(46.4)	146(90.7)	1.11 (0.54-2.26)	0.779
Region				
Akesu	154(44.4)	142(92.2)	Reference	-
Kashgar	93(26.8)	83(89.2)	0.70(0.29-1.69)	0.431
Hetian	67(19.3)	62(92.5)	1.05(0.35-3.10)	0.933
^a Others	33(9.5)	26(78.8)	0.31(0.11-0.87)	0.026
Drug resistance				
Pan-sus	178(59.5)	158(88.8)	Reference	-
INH ^{mr}	31(10.4)	29(93.5)	1.84(0.41-8.28)	1.835
RMP ^{mr}	3(1.0)	2(66.7)	0.25(0.22-2.92)	0.271
STR ^{mr}	13(4.3)	13(100.0)	-	-
MDR	51(17.1)	48(94.1)	2.03(0.58-7.11)	0.271
PDR	23(7.7)	20(87.0)	0.84(0.23-3.10)	0.798
INH resistance				
No	202(67.3)	179(88.6)	Reference	-

Yes	98(32.7)	92(93.9)	1.97(0.78-5.01)	0.154
RMP resistance				
No	239(79.7)	216(90.4)	Reference	-
Yes	61(20.3)	55(90.2)	0.98(0.38-2.51)	0.960
STR resistance				
No	262(75.5)	65(24.8)	Reference	-
Yes	85(24.5)	28(32.9)	1.11(0.43-2.86)	0.823
EMB resistance				
No	274(91.3)	246(89.8)	Reference	-
Yes	26(8.7)	25(96.2)	2.85(0.37-21.81)	0.314

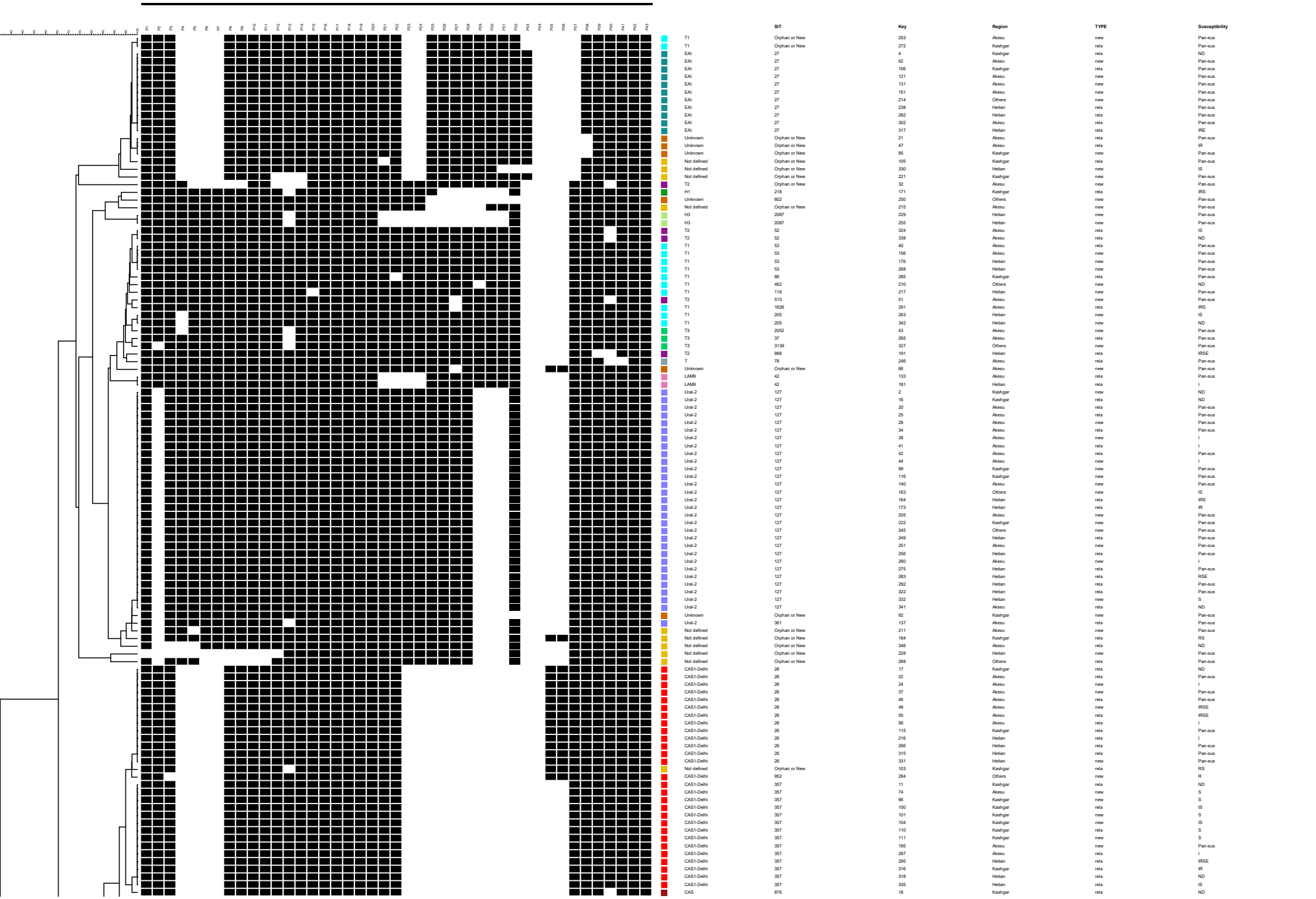
Notes: ^{mr}mono-resistance; MDR, multi-drug resistance, means that the isolates were resistant to at least isoniazid and rifampicin; PDR, the isolates were resistant to more than one drug but not MDR; Pan-sus means that the isolates were susceptible to isoniazid, rifampicin, ethambutol and streptomycin; ^aother areas, include Kizilsu Kirgiz Autonomous Prefecture and Bayingolin Mongol Autonomous Prefecture. Numbers in bold mean that $P < 0.05$.

Supplementary figures

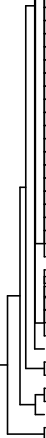
Supplementary Figure S1. Dendrogram based on spoligotyping data of *Mycobacterium tuberculosis* isolates obtained from southern Xinjiang, China

Note: Abbreviations in the TYPE column: repl, relapsed patients; in the Susceptibility column: ND, not detected; H, isoniazid; R, rifampicin; S, streptomycin; E, ethambutol;

Pan-sus, simultaneously susceptible to H, R, S, E.



Beijing	1	Helian	rela	IRS	
Beijing	166	Akesu	rela	IS	
Beijing	169	Akesu	new	IES	
Beijing	170	Akesu	rela	S	
Beijing	172	Helian	rela	IRE	
Beijing	174	Akesu	new	IRE	
Beijing	175	Helian	rela	I	
Beijing	177	Kashgar	new	IR	
Beijing	178	Kashgar	new	Pan-sus	
Beijing	179	Helian	rela	RS	
Beijing	180	Kashgar	rela	Pan-sus	
Beijing	183	Others	rela	RS	
Beijing	185	Helian	rela	IRS	
Beijing	188	Others	new	IRSE	
Beijing	187	Kashgar	new	ND	
Beijing	188	Kashgar	rela	Pan-sus	
Beijing	189	Akesu	new	I	
Beijing	190	Akesu	new	ND	
Beijing	192	Akesu	new	Pan-sus	
Beijing	193	Kashgar	new	S	
Beijing	194	Kashgar	new	ND	
Beijing	196	Others	rela	ND	
Beijing	197	Kashgar	new	IRS	
Beijing	198	Helian	new	Pan-sus	
Beijing	200	Akesu	new	I	
Beijing	201	Kashgar	rela	Pan-sus	
Beijing	202	Helian	rela	Pan-sus	
Beijing	203	Others	rela	Pan-sus	
Beijing	206	Others	new	Pan-sus	
Beijing	207	Akesu	new	IRSE	
Beijing	208	Others	rela	IRSE	
Beijing	209	Akesu	new	Pan-sus	
Beijing	212	Akesu	new	Pan-sus	
Beijing	213	Akesu	new	ND	
Beijing	218	Others	new	Pan-sus	
Beijing	219	Akesu	new	Pan-sus	
Beijing	220	Others	new	IRSE	
Beijing	223	Kashgar	new	Pan-sus	
Beijing	224	Akesu	rela	Pan-sus	
Beijing	225	Others	new	Pan-sus	
Beijing	226	Others	new	Pan-sus	
Beijing	232	Others	rela	Pan-sus	
Beijing	234	Akesu	1	Pan-sus	
Beijing	235	Helian	new	Pan-sus	
Beijing	236	Helian	rela	IRS	
Beijing	239	Akesu	new	IRS	
Beijing	240	Helian	new	IRS	
Beijing	241	Kashgar	rela	IR	
Beijing	242	Akesu	rela	Pan-sus	
Beijing	243	Akesu	rela	Pan-sus	
Beijing	244	Akesu	rela	Pan-sus	
Beijing	247	Helian	rela	Pan-sus	
Beijing	248	Akesu	new	IS	
Beijing	252	Akesu	new	Pan-sus	
Beijing	257	Helian	new	I	
Beijing	258	Kashgar	new	Pan-sus	
Beijing	259	Others	rela	IRSE	
Beijing	261	Helian	new	S	
Beijing	262	Helian	rela	I	
Beijing	264	Helian	rela	R	
Beijing	270	Akesu	new	Pan-sus	
Beijing	271	Helian	rela	Pan-sus	
Beijing	273	Helian	new	S	
Beijing	274	Akesu	rela	Pan-sus	
Beijing	277	Others	new	Pan-sus	
Beijing	279	Helian	new	Pan-sus	
Beijing	280	Others	new	Pan-sus	
Beijing	286	Others	new	IRSE	
Beijing	289	Helian	new	Pan-sus	
Beijing	290	Kashgar	rela	IR	
Beijing	293	Helian	rela	IRS	
Beijing	294	Akesu	rela	IRS	
Beijing	296	Others	rela	IRSE	
Beijing	297	Akesu	new	IRSE	
Beijing	299	Helian	rela	IR	
Beijing	300	Others	rela	ND	
Beijing	301	Kashgar	rela	ND	
Beijing	303	Akesu	new	R	
Beijing	304	Helian	new	Pan-sus	
Beijing	306	Helian	rela	IR	
Beijing	308	Kashgar	rela	ND	
Beijing	309	Helian	rela	ND	
Beijing	310	Others	rela	ND	
Beijing	312	Kashgar	rela	ND	
Beijing	313	Helian	rela	IR	
Beijing	314	Kashgar	new	Pan-sus	
Beijing	319	Kashgar	rela	IRE	
Beijing	320	Akesu	new	Pan-sus	
Beijing	323	Akesu	new	Pan-sus	
Beijing	325	Kashgar	rela	Pan-sus	
Beijing	328	Kashgar	new	Pan-sus	
Beijing	333	Helian	new	Pan-sus	
Beijing	334	Helian	rela	RS	
Beijing	336	Others	rela	ND	
Beijing	337	Akesu	new	ND	
Beijing	339	Akesu	rela	ND	
Beijing	340	Helian	new	ND	
Beijing	343	Others	rela	ND	
Beijing	344	Akesu	rela	ND	
Beijing	345	Akesu	rela	ND	
Beijing	347	Kashgar	new	Pan-sus	
Beijing	14	Kashgar	rela	ND	
Beijing	68	Akesu	new	IRS	
Beijing	190	Kashgar	rela	I	
Beijing	190	Akesu	new	IRSE	
Beijing	190	Helian	rela	IS	
Beijing	190	Akesu	rela	ND	
Beijing	205	9	Kashgar	new	ND
Beijing	209	10	Kashgar	rela	ND
Beijing	209	162	Others	rela	ND
Beijing	1162	182	Kashgar	rela	IS
Beijing	1162	305	Kashgar	rela	IS
Beijing	260	227	Helian	new	I
Beijing	1311	3	Kashgar	rela	IR
Beijing	1311	107	Kashgar	new	Pan-sus



Supplementary Figure S2. Dendrogram based on VNTR-15_{China} typing data of *Mycobacterium tuberculosis* isolates obtained from southern Xinjiang, China.

Note: Abbreviations in the TYPE column: rela, relapsed patients; in the Susceptibility column: ND, not detected; H, isoniazid; R, rifampicin; S, streptomycin; E, ethambutol; Pan-sus, simultaneously susceptible to H, R, S, E.

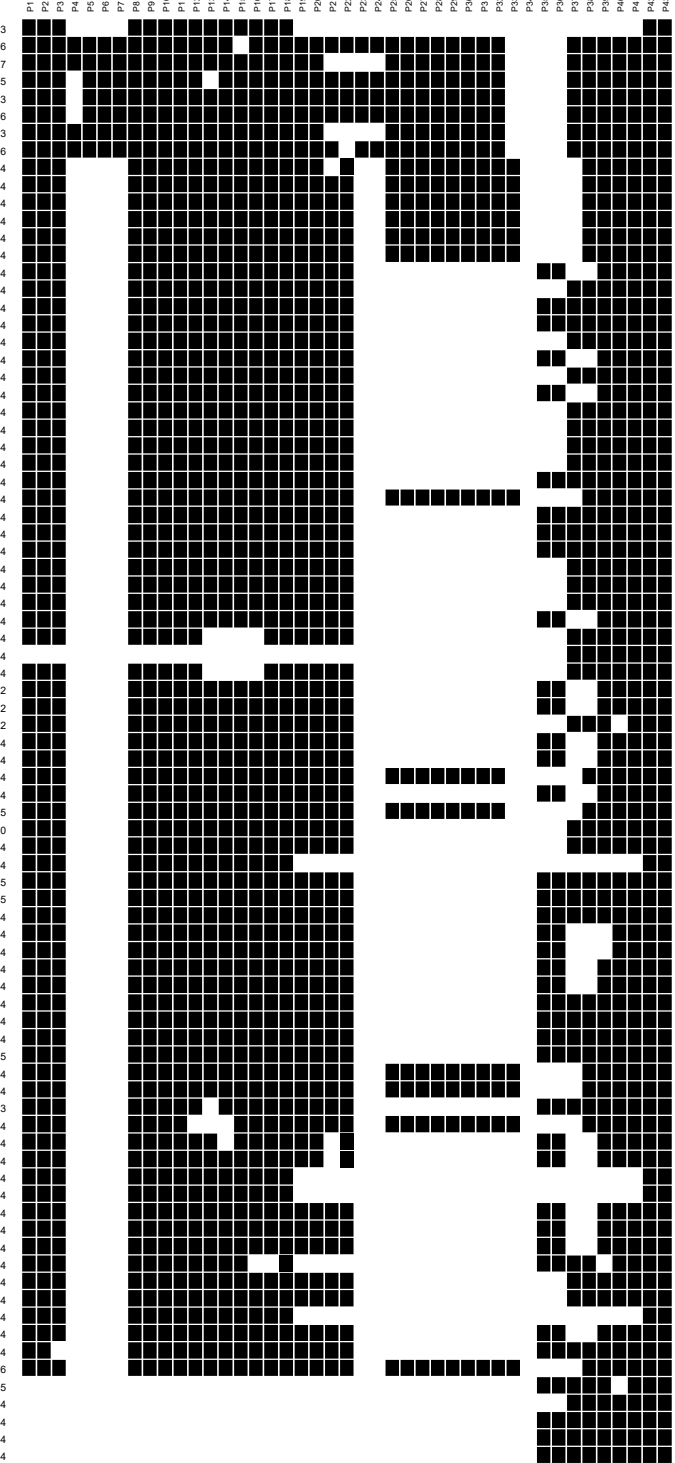
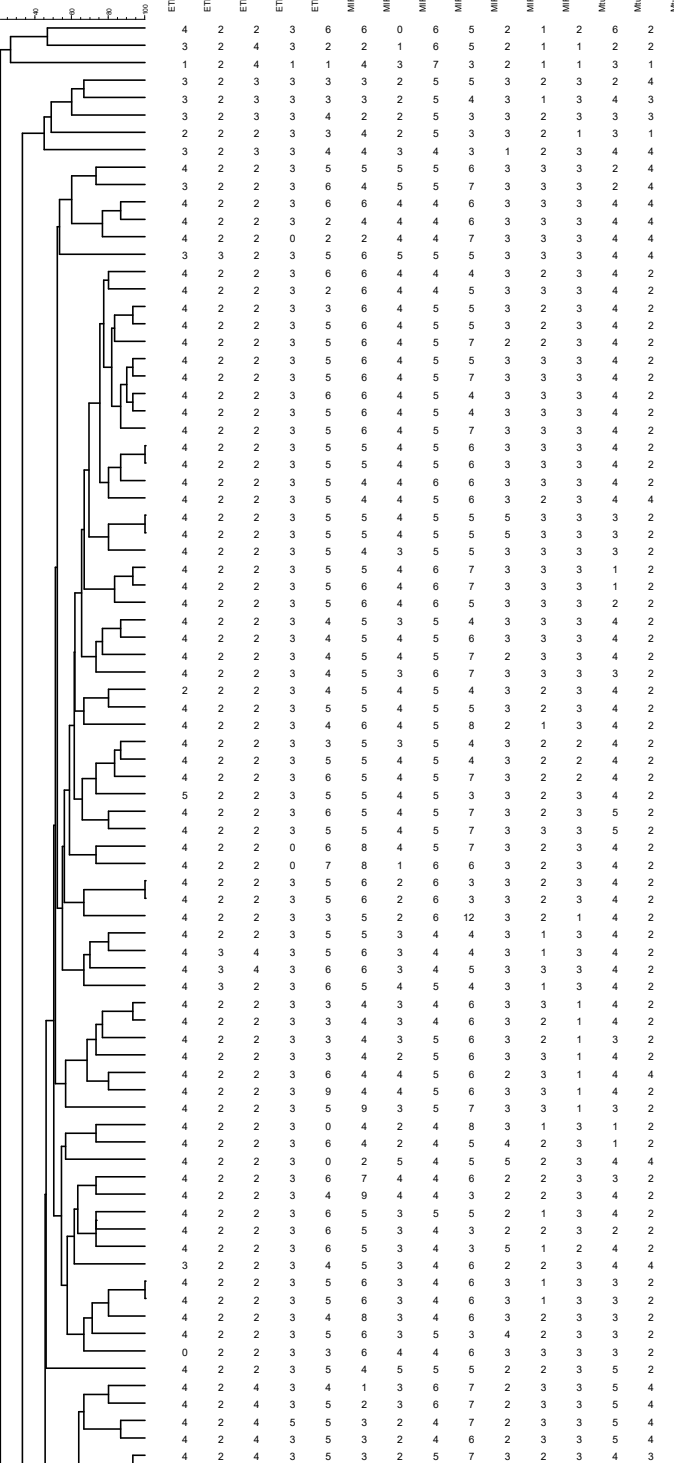
4	2	4	3	5	2	3	6	7	2	3	3	5	4	4	311	Others	rela	ND	1	Beijing
4	2	4	3	5	3	2	4	7	2	3	3	5	4	4	109	Kashgar	rela	Pan-sus	1	Beijing
4	2	4	3	5	3	2	4	6	2	3	3	5	4	4	308	Kashgar	rela	ND	1	Beijing
4	2	4	3	5	3	2	5	7	3	2	3	4	3	4	98	Kashgar	new	S	1	Beijing
4	2	4	3	5	3	2	5	7	3	2	3	4	4	4	248	Akesu	new	IS	1	Beijing
4	2	4	3	5	2	2	5	7	3	2	3	4	3	4	259	Others	rela	IRSE	1	Beijing
4	2	4	3	5	2	2	5	7	3	2	3	4	4	4	97	Kashgar	new	Pan-sus	1	Beijing
4	2	4	3	5	2	2	5	7	3	2	3	4	4	4	139	Akesu	rela	Pan-sus	1	Beijing
4	2	4	3	5	2	2	4	7	3	2	3	4	4	4	168	Akesu	rela	IS	1	Beijing
4	2	4	3	5	2	2	4	7	3	2	3	4	3	4	187	Kashgar	new	ND	1	Beijing
4	2	4	3	5	2	2	4	6	3	2	3	4	3	4	320	Akesu	new	Pan-sus	1	Beijing
4	2	4	3	5	2	2	4	7	2	2	3	4	3	4	189	Akesu	new	I	1	Beijing
4	2	4	3	9	2	3	5	7	3	2	3	4	3	4	347	Kashgar	new	Pan-sus	1	Beijing
4	2	4	3	5	2	2	4	6	3	3	3	4	4	7	200	Akesu	new	I	1	Beijing
4	2	4	3	5	3	2	4	7	3	2	3	4	4	7	224	Akesu	rela	Pan-sus	1	Beijing
4	2	4	3	5	2	3	4	7	3	2	3	4	4	4	198	Hetian	new	Pan-sus	1	Beijing
4	2	4	3	5	2	3	4	7	3	2	3	4	4	4	226	Others	new	Pan-sus	1	Beijing
4	2	4	3	5	2	3	4	7	3	2	3	4	4	4	64	Akesu	rela	Pan-sus	1	Beijing
4	2	4	3	5	2	3	4	7	2	2	3	4	4	4	193	Kashgar	new	S	1	Beijing
4	2	4	3	5	2	3	4	7	3	3	3	4	3	4	180	Kashgar	rela	Pan-sus	1	Beijing
4	2	4	3	5	2	3	4	7	3	2	3	4	3	4	188	Kashgar	rela	Pan-sus	1	Beijing
4	2	4	3	5	3	3	4	7	3	2	3	4	4	4	213	Akesu	new	ND	1	Beijing
4	2	4	3	5	3	3	5	7	3	2	3	4	4	4	247	Hetian	rela	Pan-sus	1	Beijing
4	2	4	3	5	2	3	4	7	3	3	3	4	4	4	279	Hetian	new	Pan-sus	1	Beijing
4	2	4	3	5	2	3	4	5	3	3	3	4	4	4	288	Akesu	rela	IRS	632	Beijing
4	2	4	3	5	2	3	4	6	3	3	3	4	4	4	194	Kashgar	new	ND	1	Beijing
4	2	4	3	5	3	3	4	6	3	3	3	4	4	4	223	Kashgar	new	Pan-sus	1	Beijing
4	2	4	3	5	3	3	4	7	3	3	3	4	4	4	134	Akesu	rela	IS	1	Beijing
4	2	4	3	5	3	3	4	7	3	3	3	4	4	4	304	Hetian	new	Pan-sus	1	Beijing
4	2	4	3	5	3	3	4	7	3	3	2	2	4	4	132	Akesu	rela	Pan-sus	1	Beijing
4	2	4	3	5	2	2	4	6	3	3	3	5	4	4	169	Akesu	new	IES	1	Beijing
4	2	4	3	5	3	2	4	6	3	3	3	5	4	4	225	Others	new	Pan-sus	1	Beijing
4	2	4	3	5	3	3	4	6	3	3	3	5	4	4	70	Akesu	new	Pan-sus	1	Beijing
4	2	4	3	5	2	3	4	6	3	3	3	5	4	4	289	Hetian	new	Pan-sus	1	Beijing
4	2	4	3	5	2	3	4	7	3	3	3	5	4	4	196	Others	rela	ND	1	Beijing
4	2	4	3	5	2	3	4	7	3	3	3	5	4	4	219	Others	new	Pan-sus	1	Beijing
4	2	4	3	5	2	3	5	7	3	3	3	5	4	4	95	Kashgar	new	Pan-sus	1	Beijing
4	2	4	3	5	2	3	5	7	3	3	3	5	4	4	212	Akesu	new	Pan-sus	1	Beijing
4	2	4	3	5	3	3	4	7	3	3	3	5	4	4	145	Akesu	new	Pan-sus	1	Beijing
4	2	4	3	5	2	3	5	6	3	3	3	5	3	4	232	Others	rela	Pan-sus	1	Beijing
4	2	4	3	5	2	3	5	6	3	3	2	5	4	4	148	Akesu	new	Pan-sus	1	Beijing
4	2	4	3	5	2	2	5	7	3	3	3	4	4	4	235	Hetian	new	Pan-sus	1	Beijing
4	2	4	3	5	2	2	5	7	3	3	3	4	4	4	328	Kashgar	new	Pan-sus	1	Beijing
4	2	4	3	5	2	2	5	7	3	3	3	5	4	4	144	Akesu	new	Pan-sus	1	Beijing
4	2	4	3	5	2	2	5	7	3	3	3	5	4	4	206	Others	new	Pan-sus	1	Beijing
4	2	4	3	5	2	2	5	6	3	3	3	4	4	4	261	Hetian	new	S	1	Beijing
4	2	4	3	5	2	2	4	7	3	3	3	4	4	4	175	Hetian	rela	I	1	Beijing
4	2	4	3	5	3	2	4	7	3	3	3	4	4	4	325	Kashgar	rela	Pan-sus	1	Beijing
4	2	4	3	5	3	2	4	7	3	3	3	5	4	4	114	Kashgar	new	Pan-sus	1	Beijing
4	2	4	3	5	3	3	5	7	3	3	3	5	4	4	277	Others	new	Pan-sus	1	Beijing
4	2	4	3	5	3	3	2	5	7	3	3	4	4	4	178	Kashgar	new	Pan-sus	1	Beijing
4	2	4	3	5	3	2	5	7	3	3	3	4	4	4	262	Hetian	rela	I	1	Beijing
4	2	4	3	5	3	2	5	7	3	3	3	4	4	4	314	Kashgar	new	Pan-sus	1	Beijing
4	2	4	3	5	3	3	5	7	3	3	3	4	4	4	165	Hetian	new	Pan-sus	1	Beijing
4	2	4	3	5	3	3	5	7	3	3	3	4	4	4	203	Others	rela	Pan-sus	1	Beijing
4	2	4	3	5	3	2	4	7	3	3	3	4	4	4	87	Kashgar	rela	Pan-sus	1	Beijing
4	2	4	3	5	3	2	4	7	3	3	3	4	4	4	128	Akesu	new	I	1	Beijing
4	2	4	3	5	3	2	5	7	3	3	3	4	4	4	6	Kashgar	rela	ND	1	Beijing
4	2	4	3	5	3	2	4	6	3	3	3	4	4	4	126	Akesu	new	Pan-sus	1	Beijing
4	2	4	3	5	3	2	4	6	3	3	3	4	4	4	118	Kashgar	rela	I	1	Beijing
4	2	4	3	5	2	2	5	6	3	3	3	4	4	4	119	Kashgar	new	Pan-sus	1	Beijing
4	2	4	3	5	2	3	5	7	3	3	2	4	4	4	242	Akesu	rela	Pan-sus	1	Beijing
4	2	4	3	5	2	3	5	7	3	3	3	4	4	4	280	Others	new	Pan-sus	1	Beijing
4	2	4	3	5	2	3	5	7	3	3	3	4	4	0	252	Akesu	new	Pan-sus	1	Beijing
4	2	4	3	5	2	3	5	6	3	3	3	4	4	7	219	Akesu	new	Pan-sus	1	Beijing
4	2	4	3	5	2	3	5	6	3	3	3	4	4	13	234	Akesu	new	I	1	Beijing
4	2	4	3	5	2	3	5	8	2	3	3	4	4	4	107	Kashgar	new	Pan-sus	1311	Beijing
4	2	4	3	5	2	2	5	5	3	3	3	4	3	4	147	Akesu	rela	Pan-sus	632	Beijing
4	2	4	3	5	2	4	5	5	3	3	3	4	4	4	298	Akesu	rela	ND	632	Beijing
4	2	4	1	5	2	2	5	5	3	3	3	4	4	5	237	Hetian	new	I	260	Beijing
4	2	4	3	4	3	3	5	7	3	3	3	5	4	5	9	Kashgar	new	ND	265	Beijing
4	2	4	3	7	3	3	5	7	3	3	3	0	4	4	305	Kashgar	rela	IS	1162	Beijing
4	2	4	3	5	3	3	4	7	3	3	3	5	4	4	35	Akesu	rela	Pan-sus	1	Beijing
4	2	4	3	5	3	3	4	7	3	3	3	5	4	4	90	Kashgar	new	Pan-sus	1	Beijing
4	2	4	3	5	3	3	4	7	3	3	3	5	4	4	129	Akesu	new	Pan-sus	1	Beijing
4	2	4	3	5	3	3	5	7	3	3	3	5	4	4	13	Kashgar	rela	ND	1	Beijing
4	2	4	3	5	3	3	5	7	3	3	3	5	4	4	19	Kashgar	new	IRS	1	Beijing
4	2	4	3	5	3	3	5	7	3	3	3	5	4	4	174	Akesu	new	IRE	1	Beijing
4	2	4	3	5	3	3	5	7	3	3	3	5	4	4	207	Akesu	new	IRSE	1	Beijing
4	2	4	3	5	3	3	5	7	3	3	3	5	4	4	264	Hetian	rela	R	1	Beijing
4	2	4	3	5	3	3	5	7	3	3	3	5	4	4	286	Others	new	IRSE	1	Beijing
4	2	4	3	5	2	3	5	7	3	3	3	5	4	4	345	Akesu	rela	ND	1	Beijing
4	2	4	3	5	3	3	5	7	3	3	3	5	3	4	31	Akesu	new	I	1	Beijing
4	2	4	3	5	3	3	5	7	2	3	3	5	4	4	30	Akesu	new	Pan-sus	1	Beijing
4	2	4	3	5	3	3	5	7	2	2	3	5	4	4	306	Hetian	rela	IR	1	Beijing
4	2	4	3	5	3	3	5	6	2	3	3	5	4	4	81	Kashgar	new	Pan-sus	1	Beijing
4	2	4	3	5	3	3	5	6	2	3	3	5	4	4	208	Others	rela	IRSE	1	Beijing
4	2	4	3	5	3	3	5	6	2	3	3	5	4	4	296	Others	rela	IRSE	1	Beijing
4	2	4	3	5	3	3	5	6	2	3	3	5	4	4	297	Akesu	new	IRSE	1	Beijing
4	2	4	3	5	3	3	5	6	2	3	3	5	4	4	300	Others	rela	ND	1	Beijing
4	2	4	3	5	3	3	5	6	2	3	3	5								

4	2	4	3	3	3	5	6	3	3	5	4	4	Cluster 15	33	Akesu	new	Pan-sus	1	Beijing	
4	2	4	3	5	3	5	6	3	3	3	5	4	Cluster 15	59	Akesu	rela	Pan-sus	1	Beijing	
4	2	4	3	5	3	3	5	6	3	3	5	4	Cluster 15	77	Akesu	rela	IR	1	Beijing	
4	2	4	3	5	3	3	5	6	3	3	5	4	Cluster 15	82	Kashgar	rela	Pan-sus	1	Beijing	
4	2	4	3	5	3	3	5	6	3	3	5	4	Cluster 15	86	Kashgar	new	Pan-sus	1	Beijing	
4	2	4	3	5	3	3	5	6	3	3	5	4	Cluster 15	220	Others	new	IRSE	1	Beijing	
4	2	4	3	5	3	3	5	6	3	3	5	4	Cluster 15	241	Kashgar	rela	IR	1	Beijing	
4	2	4	3	5	3	3	5	6	3	3	5	4		293	Hetian	rela	IRS	1	Beijing	
4	2	4	3	5	2	3	5	6	3	3	5	4		29	Akesu	new	I	1	Beijing	
4	2	4	3	5	2	3	5	6	3	3	5	4		50	Akesu	rela	S	1	Beijing	
4	2	4	3	5	2	3	5	7	3	2	3	5	4	Cluster 16	54	Kashgar	rela	Pan-sus	1	Beijing
4	2	4	3	5	3	3	5	7	3	2	3	5	4	Cluster 16	60	Akesu	rela	IRSE	1	Beijing
4	2	4	3	5	3	3	5	7	3	2	3	5	4	Cluster 16	88	Kashgar	rela	Pan-sus	1	Beijing
4	2	4	3	5	3	3	5	6	3	2	3	5	4	Cluster 17	39	Akesu	rela	I	1	Beijing
4	2	4	3	5	3	3	5	6	3	2	3	5	4	Cluster 17	76	Akesu	rela	IR	1	Beijing
4	2	4	3	5	3	3	5	6	3	2	3	5	4	Cluster 17	160	Hetian	new	ND	1	Beijing
4	2	4	3	5	3	3	5	6	3	2	3	5	4	Cluster 17	299	Hetian	rela	IR	1	Beijing
4	2	4	3	5	3	3	5	6	3	2	3	5	4	Cluster 17	309	Hetian	rela	ND	1	Beijing
4	2	4	3	5	3	3	5	6	3	2	3	5	4	Cluster 17	344	Akesu	rela	ND	1	Beijing
4	2	4	3	5	3	3	5	7	3	2	3	4	4	Cluster 18	7	Kashgar	rela	ND	1	Beijing
4	2	4	3	5	3	3	5	7	3	2	3	4	4	Cluster 18	23	Akesu	rela	Pan-sus	1	Beijing
4	2	4	3	5	3	3	5	7	3	2	3	4	4	Cluster 18	61	Akesu	rela	Pan-sus	1	Beijing
4	2	4	3	5	3	3	5	7	3	2	3	4	4	Cluster 18	138	Akesu	rela	Pan-sus	1	Beijing
4	2	4	3	5	3	3	5	7	3	2	3	4	4	Cluster 19	5	Kashgar	new	ND	1	Beijing
4	2	4	3	5	3	3	5	7	3	3	3	4	4	Cluster 19	15	Kashgar	rela	ND	1	Beijing
4	2	4	3	5	3	3	5	7	3	3	3	4	4	Cluster 19	125	Akesu	new	I	1	Beijing
4	2	4	3	5	3	3	5	7	3	3	3	4	4	Cluster 19	161	Kashgar	new	IS	1	Beijing
4	2	4	3	5	3	3	5	7	3	3	3	4	4	Cluster 19	197	Kashgar	new	IRS	1	Beijing
4	2	4	3	5	3	3	5	7	3	3	3	4	4	Cluster 19	310	Others	new	ND	1	Beijing
4	2	4	3	5	3	3	5	7	3	4	3	4	4		3	Kashgar	rela	IR	1311	Beijing
4	2	4	3	5	3	3	5	7	3	2	3	4	4		177	Kashgar	new	IR	1	Beijing
4	2	4	3	5	3	3	5	6	3	3	3	4	4	Cluster 20	36	Akesu	new	Pan-sus	1	Beijing
4	2	4	3	5	3	3	5	6	3	3	3	4	4	Cluster 20	123	Akesu	new	Pan-sus	1	Beijing
4	2	4	3	5	3	3	5	6	3	3	3	4	4	Cluster 20	124	Akesu	new	I	1	Beijing
4	2	4	3	5	3	3	5	6	3	3	3	4	4	Cluster 21	1	Kashgar	rela	IRE	1	Beijing
4	2	4	3	5	3	3	5	6	3	3	3	4	4	Cluster 21	26	Akesu	rela	Pan-sus	1	Beijing
4	2	4	3	5	3	3	5	6	3	3	3	4	4	Cluster 21	63	Akesu	rela	Pan-sus	1	Beijing
4	2	4	3	5	3	3	5	6	3	3	3	4	4	Cluster 21	120	Akesu	rela	E	1	Beijing
4	2	4	3	5	3	3	5	6	3	3	3	4	4	Cluster 21	179	Hetian	rela	RS	1	Beijing
4	2	4	3	5	3	3	5	6	3	3	3	4	4	Cluster 21	313	Hetian	rela	IR	1	Beijing
4	2	4	3	5	3	3	5	7	3	3	3	4	4		209	Akesu	new	Pan-sus	1	Beijing
4	2	4	3	5	3	3	5	7	3	3	3	4	4		236	Hetian	rela	IRS	1	Beijing
4	2	4	3	5	3	3	4	6	3	3	3	4	4	Cluster 22	91	Kashgar	new	Pan-sus	1	Beijing
4	2	4	3	5	3	3	4	6	3	3	3	4	4	Cluster 22	319	Kashgar	rela	IRE	1	Beijing
4	2	4	3	5	3	3	4	6	3	3	3	5	4	Cluster 23	58	Akesu	new	Pan-sus	1	Beijing
4	2	4	3	5	3	3	4	6	3	3	3	5	4	Cluster 23	183	Others	rela	RS	1	Beijing
4	2	4	3	5	3	3	4	6	3	3	3	5	4	Cluster 23	333	Hetian	new	Pan-sus	1	Beijing
4	2	4	3	5	3	3	4	6	3	3	2	5	4		93	Kashgar	rela	Pan-sus	1	Beijing
4	2	4	3	5	3	3	4	6	3	3	3	5	3		45	Akesu	rela	Pan-sus	1	Beijing
4	2	4	3	5	3	3	4	6	3	3	3	4	4		130	Akesu	new	Pan-sus	1	Beijing
4	2	4	3	5	3	3	4	6	2	3	3	4	4		185	Hetian	rela	IRS	1	Beijing
4	2	4	3	5	2	3	5	6	2	3	3	4	4		71	Akesu	rela	IR	1	Beijing
4	2	4	3	5	2	3	5	6	2	3	3	4	4		334	Hetian	rela	RS	1	Beijing
4	2	4	3	5	3	3	5	6	2	2	3	4	4	Cluster 24	94	Kashgar	rela	Pan-sus	1	Beijing
4	2	4	3	5	3	3	5	6	2	2	3	4	4	Cluster 24	167	Hetian	rela	IRS	1	Beijing
4	2	4	3	5	3	3	5	6	2	2	3	4	4	Cluster 24	301	Kashgar	rela	ND	1	Beijing
4	2	4	3	5	3	3	5	6	2	2	3	5	4		78	Akesu	new	Pan-sus	1	Beijing
4	2	4	3	5	2	3	5	7	2	2	3	4	4	Cluster 25	65	Akesu	new	Pan-sus	1	Beijing
4	2	4	3	5	2	3	5	7	2	2	3	4	4	Cluster 25	154	Akesu	rela	IR	1	Beijing
4	2	4	3	5	2	3	5	7	2	2	3	5	4		89	Kashgar	new	Pan-sus	1	Beijing
4	2	4	3	5	2	3	5	6	3	2	3	4	3		146	Akesu	rela	IRSE	1	Beijing
4	2	4	3	5	2	3	5	6	3	2	3	4	4		336	Others	rela	ND	1	Beijing
4	2	4	3	5	2	3	5	6	3	2	3	4	4	Cluster 26	294	Akesu	rela	IRS	1	Beijing
4	2	4	3	5	2	3	5	6	3	2	3	4	4	Cluster 26	312	Kashgar	rela	ND	1	Beijing
4	2	4	3	5	2	3	5	6	3	2	3	4	4		290	Kashgar	rela	IR	1	Beijing
4	2	4	3	5	2	3	4	6	2	2	3	5	4		73	Akesu	rela	ND	1	Beijing
4	2	4	3	5	3	3	4	6	2	2	3	5	4		172	Hetian	rela	IRE	1	Beijing
4	2	4	3	5	2	3	4	6	3	2	3	5	4	Cluster 27	303	Akesu	new	R	1	Beijing
4	2	4	3	5	2	3	4	6	3	2	3	5	4	Cluster 27	343	Others	rela	ND	1	Beijing
4	2	4	3	5	3	3	4	6	3	2	3	5	4	Cluster 28	52	Akesu	rela	Pan-sus	1	Beijing
4	2	4	3	5	3	3	4	6	3	2	3	5	4	Cluster 28	57	Akesu	new	Pan-sus	1	Beijing
4	2	4	3	5	3	3	4	6	3	2	3	5	4	Cluster 28	159	Hetian	rela	IRSE	1	Beijing
4	2	4	3	5	2	3	4	6	3	2	2	5	4		49	Akesu	new	IR	1	Beijing
4	2	4	3	5	2	3	4	7	3	2	3	5	4		53	Akesu	rela	I	1	Beijing
3	2	4	3	5	2	3	4	6	3	2	3	5	2		68	Akesu	new	IRS	190	Beijing
4	2	4	3	5	2	2	5	6	2	2	3	4	3	Cluster 29	150	Akesu	rela	IS	1	Beijing
4	2	4	3	5	2	2	5	6	2	2	3	4	3	Cluster 29	258	Kashgar	new	Pan-sus	1	Beijing
4	2	4	3	5	2	3	5	6	2	2	3	4	3		340	Hetian	new	ND	1	Beijing
4	2	4	3	5	2	2	5	7	2	2	3	5	3		257	Hetian	new	I	1	Beijing
4	2	4	3	5	2	3	5	6	2	2	3	5	4		155	Akesu	new	Pan-sus	1	Beijing
4	2	4	3	5	2	2	4	6	2	2	3	5	4		190	Akesu	new	ND	1	Beijing
4	2	4	3	5	2	2	4	6	2	2	3	4	4		192	Akesu	new	Pan-sus	1	Beijing
4	2	4	3	5	2	2	4	6	2	3	3	4	4		201	Kashgar	rela	Pan-sus	1	Beijing
4	2	4	3	5	2	2	5	6	2	3	3	5	4		102	Kashgar	rela	RSE	1	Beijing
4	2	4	3	5	2	2	4	6	2	3	3	5	4		170	Akesu	rela	S	1	Beijing
4	2	4	3	5	2	2	5	7	3	2	2	5	3		149	Akesu	new	Pan-sus	1	Beijing
4	2	4	3	5	2	2	5	6	3	2	2	5	3		202	Hetian	rela	Pan-sus	1	Beijing
4	2	4	3	5	2	2	5	6	3	2	2	5	4		323	Akesu	new	Pan-sus	1	Beijing
4	2	4	3	5	2	2	5	6	3	2	2	5	3		271	Hetian	rela	Pan-sus	1	Beijing
4	2	4	3	5	2	2	5	6	3	3	2	5	3		152	Akesu	new	Pan-sus	1	Beijing
4	2	4	3	5	2	2	5	6	3	3	2	4	3							

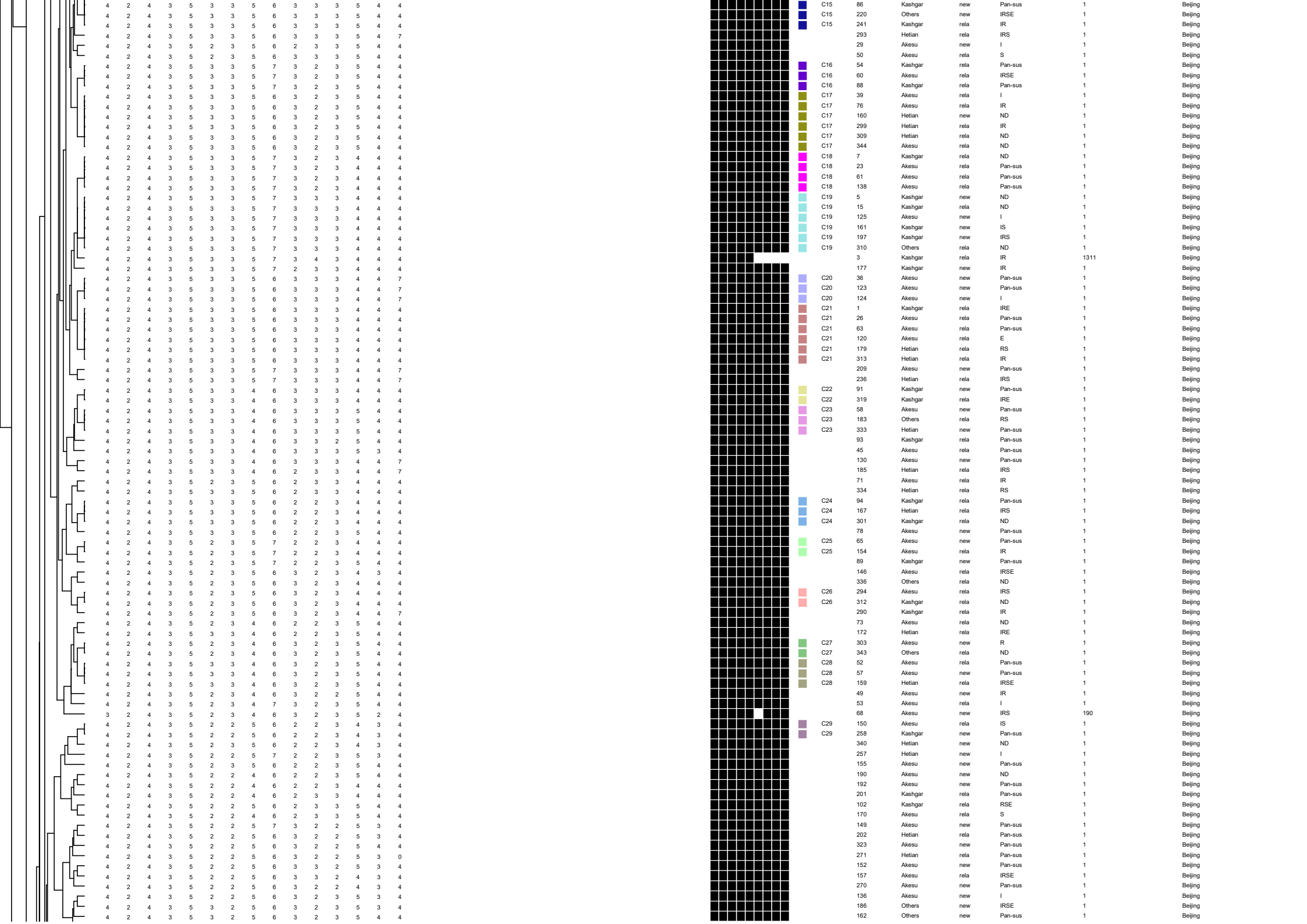
4	2	4	3	5	2	2	5	6	3	2	2	4	3	4	270	Akesu	new	Pan-sus	1	Beijing	
4	2	4	3	5	2	2	5	6	3	2	2	3	5	3	4	136	Akesu	new	I	1	Beijing
4	2	4	3	5	3	2	5	6	3	2	3	5	3	4	186	Others	new	IRSE	1	Beijing	
4	2	4	3	5	3	2	5	6	3	2	3	5	4	4	162	Others	new	Pan-sus	1	Beijing	
4	2	4	3	5	3	2	5	6	3	3	3	5	3	4	274	Akesu	rela	Pan-sus	1	Beijing	
3	2	4	3	5	2	2	5	3	3	2	2	4	4	4	135	Akesu	new	Pan-sus	632	Beijing	
4	2	4	3	5	2	3	4	6	2	3	2	4	3	4	108	Kashgar	rela	Pan-sus	1	Beijing	
4	2	4	3	5	2	3	4	6	2	3	2	4	4	4	239	Akesu	new	IRS	1	Beijing	
4	2	4	3	5	3	3	4	6	2	2	2	5	3	4	240	Hetian	new	IRS	1	Beijing	
4	2	4	3	5	3	3	5	6	3	3	2	4	4	4	122	Akesu	rela	Pan-sus	1	Beijing	
4	2	4	3	5	3	3	5	6	3	3	2	4	4	4	273	Hetian	new	S	1	Beijing	
4	2	4	3	5	3	3	4	6	3	3	2	4	4	4	244	Akesu	rela	Pan-sus	1	Beijing	
4	2	4	3	5	3	3	5	6	3	2	2	4	3	4	337	Akesu	new	ND	1	Beijing	
4	2	4	3	5	3	2	4	6	3	3	2	4	3	4	117	Kashgar	rela	Pan-sus	1	Beijing	
4	2	4	3	5	3	2	4	7	2	2	3	4	4	4	113	Kashgar	rela	S	1	Beijing	
4	2	4	3	5	3	2	4	7	2	3	2	4	4	4	243	Akesu	rela	Pan-sus	1	Beijing	
4	2	4	3	5	3	3	5	7	2	3	2	4	3	4	112	Kashgar	new	Pan-sus	1	Beijing	
4	2	4	3	5	3	2	5	7	2	3	2	4	3	4	339	Akesu	rela	ND	1	Beijing	
4	2	4	3	2	5	5	5	6	2	3	3	4	4	4	85	Kashgar	new	Pan-sus	Orphan or New	Unknown	
4	2	4	0	6	3	3	6	8	3	3	3	5	4	4	166	Hetian	rela	IS	190	Beijing	
4	2	4	3	6	3	3	5	8	3	3	3	5	4	4	182	Kashgar	rela	IS	1162	Beijing	
4	2	2	0	6	3	3	6	8	3	4	3	4	4	4	330	Hetian	new	IS	Orphan or New	Not defined	
3	2	4	3	5	3	3	5	7	3	2	3	4	2	4	153	Akesu	rela	IRSE	190	Beijing	
3	2	4	3	2	3	3	5	6	3	2	3	5	2	4	307	Akesu	rela	ND	190	Beijing	
2	2	4	3	2	3	3	6	3	3	2	3	2	2	4	32	Akesu	new	Pan-sus	Orphan or New	T2	
4	2	4	3	3	3	3	4	6	3	2	3	2	4	3	171	Kashgar	rela	IRS	218	H1	
4	2	2	3	7	4	5	5	7	3	2	3	4	4	4	47	Akesu	rela	IR	Orphan or New	Unknown	
4	2	4	3	7	3	1	5	7	3	2	3	5	4	4	84	Kashgar	rela	I	190	Beijing	
4	2	0	0	7	5	5	6	7	3	3	3	4	4	4	21	Akesu	rela	Pan-sus	Orphan or New	Unknown	
4	3	4	3	7	5	4	5	6	3	2	2	5	4	4	121	Akesu	new	Pan-sus	27	EAI	
4	3	4	3	7	6	4	4	6	3	3	2	4	4	4	131	Akesu	new	Pan-sus	27	EAI	
3	1	4	3	2	1	2	6	3	3	2	4	2	2	4	156	Akesu	new	Pan-sus	53	T1	
3	1	4	3	2	1	2	6	5	3	2	3	3	2	4	229	Hetian	new	Pan-sus	2087	H3	
3	1	4	3	2	1	1	5	3	3	2	2	2	2	4	269	Others	rela	Pan-sus	Orphan or New	Not defined	
3	1	4	3	5	1	2	4	6	3	2	2	3	2	4	268	Hetian	new	Pan-sus	53	T1	
3	1	3	3	2	2	2	5	5	3	2	3	3	2	4	44	Akesu	new	I	127	Ural-2	
3	1	4	0	2	2	2	5	5	3	2	3	3	2	4	260	Akesu	new	I	127	Ural-2	
2	1	4	3	2	2	2	5	4	3	2	3	3	2	4	42	Akesu	rela	Pan-sus	127	Ural-2	
3	1	4	3	2	1	2	5	4	3	2	3	3	2	4	137	Akesu	rela	Pan-sus	361	Ural-2	
3	1	4	3	3	2	2	5	3	3	2	3	3	2	4	210	Others	new	ND	462	T1	
3	1	3	3	3	2	2	5	4	2	2	3	3	2	4	245	Others	new	Pan-sus	127	Ural-2	
3	1	3	3	2	1	2	5	4	2	2	3	3	2	4	255	Hetian	new	Pan-sus	2087	H3	
3	1	4	3	3	1	3	4	4	3	2	3	3	2	4	140	Akesu	new	Pan-sus	127	Ural-2	
3	1	4	3	3	1	3	5	4	3	2	3	3	2	4	275	Hetian	rela	Pan-sus	127	Ural-2	
3	1	4	3	3	1	2	5	4	3	1	3	3	2	4	327	Others	new	Pan-sus	3139	T3	
3	1	4	3	3	2	2	4	4	3	2	4	3	2	4	99	Kashgar	new	Pan-sus	127	Ural-2	
3	1	4	0	2	2	2	4	4	3	2	2	3	2	4	228	Hetian	new	Pan-sus	Orphan or New	Not defined	
3	1	4	3	2	2	3	4	4	3	2	3	5	2	4	222	Kashgar	new	Pan-sus	127	Ural-2	
2	1	4	3	3	1	2	5	4	3	2	3	5	2	4	256	Hetian	rela	Pan-sus	127	Ural-2	
2	1	4	3	3	1	2	5	4	2	2	3	8	2	6	332	Hetian	new	S	127	Ural-2	
2	1	4	3	2	1	3	5	4	3	2	3	6	2	4	292	Hetian	rela	Pan-sus	127	Ural-2	
2	1	4	3	3	1	2	4	5	2	2	3	3	2	4	249	Hetian	rela	Pan-sus	127	Ural-2	
2	1	4	3	3	1	2	4	5	2	2	4	3	2	5	251	Akesu	new	Pan-sus	127	Ural-2	
3	1	4	3	2	1	2	4	4	2	2	3	3	2	4	173	Hetian	rela	IR	127	Ural-2	
2	1	4	3	2	1	2	4	4	2	2	3	3	2	4	205	Akesu	new	Pan-sus	127	Ural-2	
3	1	4	3	2	1	2	1	5	2	2	1	3	2	5	215	Akesu	new	Pan-sus	Orphan or New	Not defined	
2	1	4	3	3	2	3	4	5	3	2	3	3	2	4	34	Akesu	rela	Pan-sus	127	Ural-2	
2	1	4	3	3	2	3	4	5	1	2	3	5	2	4	184	Kashgar	rela	RS	Orphan or New	Not defined	
3	1	4	3	2	2	1	4	5	3	2	3	3	2	4	291	Akesu	rela	IRS	1626	T1	
2	1	4	3	3	1	3	4	5	2	1	3	2	2	4	346	Akesu	rela	ND	Orphan or New	Not defined	
3	3	4	3	3	2	3	5	5	3	2	4	5	2	4	116	Kashgar	new	Pan-sus	127	Ural-2	
3	1	4	3	3	2	3	5	5	2	2	4	8	2	4	164	Hetian	rela	IRS	127	Ural-2	
3	1	4	3	2	2	3	5	7	3	2	4	6	2	4	2	Kashgar	new	ND	127	Ural-2	
3	1	4	3	3	2	2	5	5	2	2	3	3	2	4	163	Others	new	IS	127	Ural-2	
3	1	4	3	3	2	3	5	5	3	2	3	3	2	4	283	Hetian	rela	RSE	127	Ural-2	
3	1	4	3	3	1	3	5	9	2	2	3	3	2	4	16	Kashgar	rela	ND	127	Ural-2	
3	1	4	3	3	1	3	5	4	2	2	3	3	2	4	27	Akesu	new	Pan-sus	Orphan or New	Unknown	
3	1	4	3	2	1	3	5	5	2	2	3	5	2	4	341	Akesu	rela	ND	127	Ural-2	
3	1	3	3	3	2	3	4	4	3	2	3	5	2	4	28	Akesu	new	Pan-sus	127	Ural-2	
3	1	3	3	3	2	3	5	4	3	2	3	0	2	4	38	Akesu	new	I	127	Ural-2	
3	1	3	3	3	1	3	5	5	3	2	3	5	2	6	25	Akesu	rela	Pan-sus	127	Ural-2	
3	1	3	3	3	2	3	5	5	3	2	3	5	2	4	41	Akesu	rela	I	127	Ural-2	
3	1	0	2	2	2	0	5	4	1	2	3	3	2	4	211	Akesu	new	Pan-sus	Orphan or New	Not defined	
3	1	2	3	4	2	2	5	6	1	2	3	2	2	4	246	Akesu	rela	Pan-sus	78	T	
3	1	0	0	3	2	0	0	5	3	2	3	0	2	4	20	Akesu	rela	Pan-sus	127	Ural-2	
0	1	0	0	3	2	2	5	5	3	2	3	0	2	4	322	Hetian	rela	Pan-sus	127	Ural-2	
2	2	4	0	3	2	2	6	5	3	2	4	2	2	4	250	Others	new	Pan-sus	602	Unknown	
3	1	4	0	5	2	1	5	6	3	2	6	2	2	4	265	Akesu	rela	Pan-sus	37	T3	
3	1	5	3	4	2	2	1	5	2	2	4	3	2	4	40	Akesu	rela	Pan-sus	53	T1	
3	1	5	3	3	2	2	5	4	0	1	3	3	2	3	176	Hetian	new	Pan-sus	53	T1	
3	3	4	3	2	2	2	1	5	3	1	3	5	2	4	92	Kashgar	new	Pan-sus	Orphan or New	Unknown	
3	2	4	5	3	1	3	5	3	3	2	2	1	2	2	51	Akesu	new	Pan-sus	515	T2	
3	2	4	3	3	2	3	5	3	2	1	2	1	2	2	66	Akesu	new	Pan-sus	Orphan or New	Unknown	
2	2	4	0	3	1	1	4	3	2	2	2	1	2	2	324	Akesu	rela	IS	52	T2	
4	2	4	5	3	2	3	5	4	1	2	2	1	2	4	338	Akesu	rela	ND	52	T2	
4	2	4	4	2	1	2	4	4	2	2	1	1	2	2	191	Hetian	rela	IRSE	888	T2	

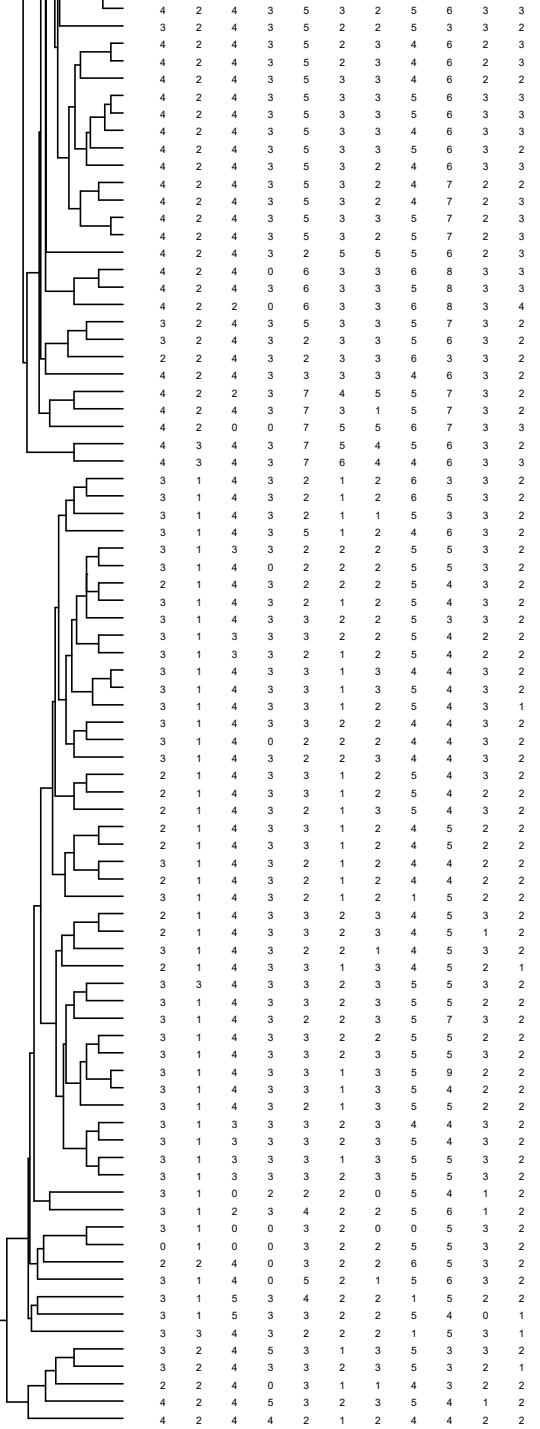
Supplementary Figure S3. Dendrogram based on Spoligotyping and VNTR-15_{China} typing data of *Mycobacterium tuberculosis* isolates obtained from southern Xinjiang, China.

Note: Abbreviations in the TYPE column: rela, relapsed patients; in the Susceptibility column: ND, not detected; H, isoniazid; R, rifampicin; S, streptomycin; E, ethambutol; Pan-sus, simultaneously susceptible to H, R, S, E; C, cluster.

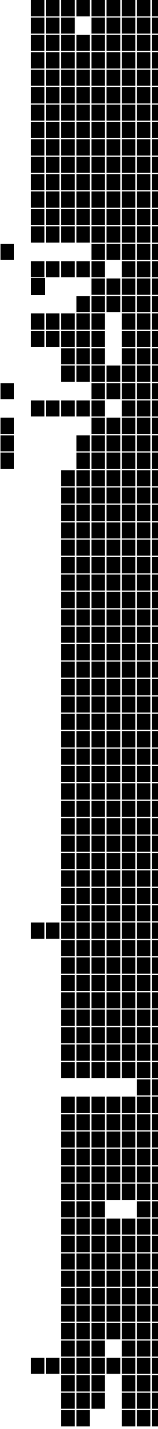


Key	Region	TYPE	Susceptibility	SIT	Lineage
143	Akesu	new	I	Orphan or New	Not defined
217	Hetian	new	Pan-sus	118	T1
181	Hetian	rela	I	42	LAM9
43	Akesu	new	Pan-sus	2052	T3
342	Hetian	new	ND	205	T1
263	Hetian	new	IS	205	T1
133	Akesu	rela	Pan-sus	42	LAM9
285	Kashgar	rela	Pan-sus	86	T1
105	Kashgar	rela	Pan-sus	Orphan or New	Not defined
238	Hetian	rela	Pan-sus	27	EAI
214	Others	new	Pan-sus	27	EAI
302	Akesu	rela	Pan-sus	27	EAI
282	Hetian	rela	Pan-sus	27	EAI
317	Hetian	rela	IRE	27	EAI
79	Akesu	new	Pan-sus	25	CAS1-Delhi
318	Hetian	rela	ND	357	CAS1-Delhi
48	Akesu	new	IRSE	26	CAS1-Delhi
56	Akesu	rela	I	26	CAS1-Delhi
335	Hetian	rela	IS	357	CAS1-Delhi
69	Akesu	new	Pan-sus	25	CAS1-Delhi
316	Kashgar	rela	IR	357	CAS1-Delhi
67	Akesu	rela	Pan-sus	25	CAS1-Delhi
295	Hetian	rela	IRSE	357	CAS1-Delhi
114	Kashgar	new	IS	357	CAS1-Delhi
11	Kashgar	rela	ND	357	CAS1-Delhi
74	Akesu	new	S	357	CAS1-Delhi
17	Kashgar	rela	ND	26	CAS1-Delhi
62	Akesu	new	Pan-sus	27	EAI
37	Akesu	new	Pan-sus	26	CAS1-Delhi
46	Akesu	rela	Pan-sus	26	CAS1-Delhi
55	Akesu	rela	IRSE	26	CAS1-Delhi
110	Kashgar	rela	S	357	CAS1-Delhi
111	Kashgar	new	S	357	CAS1-Delhi
195	Akesu	new	Pan-sus	357	CAS1-Delhi
231	Hetian	new	Pan-sus	25	CAS1-Delhi
233	Hetian	new	Pan-sus	Orphan or New	Not defined
10	Kashgar	rela	ND	269	Beijing
278	Hetian	new	Pan-sus	Orphan or New	Not defined
12	Kashgar	rela	ND	25	CAS1-Delhi
72	Akesu	new	Pan-sus	25	CAS1-Delhi
18	Kashgar	rela	ND	876	CAS
141	Akesu	new	Pan-sus	25	CAS1-Delhi
142	Akesu	rela	Pan-sus	25	CAS1-Delhi
272	Kashgar	rela	Pan-sus	Orphan or New	T1
267	Kashgar	rela	ND	25	CAS1-Delhi
253	Akesu	new	Pan-sus	Orphan or New	T1
287	Akesu	rela	I	357	CAS1-Delhi
96	Kashgar	new	S	357	CAS1-Delhi
329	Others	new	Pan-sus	Orphan or New	Not defined
22	Akesu	rela	Pan-sus	26	CAS1-Delhi
24	Akesu	new	I	26	CAS1-Delhi
331	Hetian	new	Pan-sus	26	CAS1-Delhi
75	Akesu	new	Pan-sus	381	CAS1-Delhi
127	Akesu	new	I	381	CAS1-Delhi
83	Kashgar	rela	I	25	CAS1-Delhi
80	Akesu	new	Pan-sus	25	CAS1-Delhi
216	Hetian	rela	I	26	CAS1-Delhi
266	Hetian	rela	Pan-sus	26	CAS1-Delhi
115	Kashgar	rela	Pan-sus	26	CAS1-Delhi
315	Hetian	rela	Pan-sus	26	CAS1-Delhi
106	Kashgar	rela	Pan-sus	27	EAI
151	Akesu	new	Pan-sus	27	EAI
103	Kashgar	rela	RS	Orphan or New	Not defined
221	Kashgar	new	ND	Orphan or New	Not defined
326	Others	new	ND	Orphan or New	Not defined
230	Kashgar	rela	I	1203	CAS1-Delhi
199	Akesu	rela	Pan-sus	Orphan or New	Not defined
281	Hetian	rela	I	Orphan or New	Not defined
158	Akesu	new	Pan-sus	25	CAS1-Delhi
204	Akesu	new	Pan-sus	25	CAS1-Delhi
321	Akesu	new	Pan-sus	25	CAS1-Delhi
276	Others	rela	Pan-sus	Orphan or New	Not defined
100	Kashgar	rela	IS	357	CAS1-Delhi
101	Kashgar	new	S	357	CAS1-Delhi
227	Akesu	rela	Pan-sus	Orphan or New	Not defined
254	Kashgar	new	Pan-sus	25	CAS1-Delhi
284	Others	new	R	952	CAS1-Delhi
4	Kashgar	rela	ND	27	EAI
14	Kashgar	rela	ND	190	Beijing
311	Others	new	ND	269	Beijing
109	Kashgar	rela	Pan-sus	1	Beijing
308	Kashgar	rela	ND	1	Beijing
98	Kashgar	new	S	1	Beijing





4	2	4	3	5	3	2	5	6	3	3	3	5	3	4
3	2	4	3	5	2	2	5	3	3	2	2	4	4	4
4	2	4	3	5	2	3	4	6	2	3	2	4	3	4
4	2	4	3	5	2	3	4	6	2	3	2	4	4	4
4	2	4	3	5	3	3	4	6	2	2	2	5	3	4
4	2	4	3	5	3	3	5	6	3	3	2	4	4	4
4	2	4	3	5	3	3	5	6	3	3	2	4	4	4
4	2	4	3	5	3	3	4	6	3	3	2	4	4	4
4	2	4	3	5	3	3	5	6	3	2	2	4	3	4
4	2	4	3	5	3	2	4	6	3	3	2	4	3	4
4	2	4	3	5	3	2	4	7	2	2	2	3	4	4
4	2	4	3	5	3	2	4	7	2	3	2	4	4	4
4	2	4	3	5	3	3	5	7	2	3	2	4	3	4
4	2	4	3	5	3	2	5	7	2	3	2	4	3	4
4	2	4	3	2	5	5	5	6	2	3	3	4	4	4
4	2	4	0	6	3	3	6	8	3	3	3	5	4	4
4	2	4	3	6	3	3	5	8	3	3	3	5	4	4
4	2	2	0	6	3	3	6	8	3	4	3	4	4	4
3	2	4	3	5	3	3	5	7	3	2	3	4	2	4
3	2	4	3	2	3	3	5	6	3	2	3	5	2	4
2	2	4	3	2	3	3	6	3	3	2	3	2	2	4
4	2	4	3	3	3	3	4	6	3	2	3	2	4	3
4	2	2	3	7	4	5	5	7	3	2	3	4	4	4
4	2	4	3	7	3	1	5	7	3	2	3	5	4	4
4	2	0	0	7	5	5	6	7	3	3	3	4	4	4
4	3	4	3	7	5	4	5	6	3	2	2	5	4	4
4	3	4	3	7	6	4	4	6	3	3	2	4	4	4
3	1	4	3	2	1	2	6	3	3	2	4	2	2	4
3	1	4	3	2	1	2	6	5	3	2	3	3	2	4
3	1	4	3	2	1	1	5	3	3	2	2	2	2	4
3	1	4	3	5	1	2	4	6	3	2	2	3	2	4
3	1	3	3	2	2	2	5	5	3	2	3	3	2	4
3	1	4	0	2	2	2	5	5	3	2	3	3	2	4
2	1	4	3	2	2	2	5	4	3	2	3	3	2	4
3	1	4	3	2	1	2	5	4	3	2	3	3	2	4
3	1	4	3	3	2	2	5	3	3	2	3	3	2	4
3	1	3	3	3	2	2	5	4	2	2	3	3	2	4
3	1	3	3	2	1	2	5	4	2	2	3	3	2	4
3	1	4	3	3	1	3	4	4	3	2	3	3	2	4
3	1	4	3	3	1	3	5	4	3	2	3	3	2	4
3	1	4	3	3	1	2	5	4	3	1	3	3	2	4
3	1	4	3	3	2	2	4	4	3	2	4	3	2	4
3	1	4	3	3	2	2	4	4	3	2	2	3	2	4
3	1	4	3	3	2	2	4	4	3	2	2	3	2	4
3	1	4	3	3	1	2	5	4	2	2	3	8	2	4
2	1	4	3	3	1	2	4	5	2	2	3	3	2	4
2	1	4	3	3	1	2	4	5	2	2	4	3	2	5
3	1	4	3	2	1	2	4	4	2	2	3	3	2	4
2	1	4	3	2	1	2	4	4	2	2	3	3	2	4
3	1	4	3	2	1	2	1	5	2	2	1	3	2	5
2	1	4	3	3	2	3	4	5	3	2	3	3	2	4
3	1	4	3	2	2	1	4	5	3	2	3	3	2	4
2	1	4	3	3	1	3	4	5	2	1	3	2	2	4
3	3	4	3	3	2	3	5	5	3	2	4	5	2	4
3	1	4	3	3	2	3	5	5	2	2	4	8	2	4
3	1	4	3	2	2	3	5	7	3	2	4	6	2	4
3	1	4	3	3	2	2	5	5	2	2	3	3	2	4
3	1	4	3	3	2	3	5	5	3	2	3	3	2	4
3	1	4	3	3	1	3	5	9	2	2	3	3	2	4
3	1	4	3	3	1	3	5	4	2	2	3	3	2	4
3	1	4	3	2	1	3	5	5	2	2	3	5	2	4
3	1	3	3	3	2	3	4	4	3	2	3	5	2	4
3	1	3	3	3	2	3	5	4	3	2	3	0	2	4
3	1	3	3	3	1	3	5	5	3	2	3	5	2	6
3	1	3	3	3	2	3	5	5	3	2	3	5	2	4
3	1	0	2	2	2	0	5	4	1	2	3	3	2	4
3	1	2	3	4	2	2	5	6	1	2	3	2	2	4
3	1	0	0	3	2	0	0	5	3	2	3	0	2	4
0	1	0	0	3	2	2	5	5	3	2	3	0	2	4
2	2	4	0	3	2	2	6	5	3	2	4	2	2	4
3	1	4	0	5	2	1	5	6	3	2	6	2	2	4
3	1	5	3	4	2	2	1	5	2	2	4	3	2	4
3	1	5	3	3	2	2	5	4	0	1	3	3	2	3
3	3	4	3	2	2	2	1	5	3	1	3	5	2	4
3	2	4	5	3	1	3	5	3	3	2	2	1	2	2
3	2	4	3	3	2	3	5	3	2	1	2	1	2	2
2	2	4	0	3	1	1	4	3	2	2	2	1	2	2
4	2	4	5	3	2	3	5	4	1	2	2	1	2	4
4	2	4	4	2	1	2	4	4	2	2	1	1	2	2



274	Akesu	rela	Pan-sus	1	Beijing
135	Akesu	new	Pan-sus	632	Beijing
108	Kashgar	rela	Pan-sus	1	Beijing
239	Akesu	new	IRS	1	Beijing
240	Hetian	new	IRS	1	Beijing
122	Akesu	rela	Pan-sus	1	Beijing
273	Hetian	new	S	1	Beijing
244	Akesu	rela	Pan-sus	1	Beijing
337	Akesu	new	ND	1	Beijing
117	Kashgar	rela	Pan-sus	1	Beijing
113	Kashgar	rela	S	1	Beijing
243	Akesu	rela	Pan-sus	1	Beijing
112	Kashgar	new	Pan-sus	1	Beijing
339	Akesu	rela	ND	1	Beijing
85	Kashgar	new	Pan-sus	Orphan or New	Unknown
166	Hetian	rela	IS	190	Beijing
182	Kashgar	rela	IS	1162	Beijing
330	Hetian	new	IS	Orphan or New	Not defined
153	Akesu	rela	IRSE	190	Beijing
307	Akesu	rela	ND	190	Beijing
32	Akesu	new	Pan-sus	Orphan or New	T2
171	Kashgar	rela	IRS	218	H1
47	Akesu	rela	IR	Orphan or New	Unknown
84	Kashgar	rela	I	190	Beijing
21	Akesu	rela	Pan-sus	Orphan or New	Unknown
121	Akesu	new	Pan-sus	27	EAI
131	Akesu	new	Pan-sus	27	EAI
156	Akesu	new	Pan-sus	53	T1
229	Hetian	new	Pan-sus	2087	H3
269	Others	rela	Pan-sus	Orphan or New	Not defined
268	Hetian	new	Pan-sus	53	T1
44	Akesu	new	I	127	Ural-2
260	Akesu	new	I	127	Ural-2
42	Akesu	rela	Pan-sus	127	Ural-2
137	Akesu	rela	Pan-sus	361	Ural-2
210	Others	new	ND	462	T1
245	Others	new	Pan-sus	127	Ural-2
255	Hetian	new	Pan-sus	2087	H3
140	Akesu	new	Pan-sus	127	Ural-2
275	Hetian	rela	Pan-sus	127	Ural-2
327	Others	new	Pan-sus	3139	T3
99	Kashgar	new	Pan-sus	127	Ural-2
228	Hetian	new	Pan-sus	Orphan or New	Not defined
222	Kashgar	new	Pan-sus	127	Ural-2
256	Hetian	rela	Pan-sus	127	Ural-2
332	Hetian	new	S	127	Ural-2
292	Hetian	rela	Pan-sus	127	Ural-2
249	Hetian	rela	Pan-sus	127	Ural-2
251	Akesu	new	Pan-sus	127	Ural-2
173	Hetian	rela	IR	127	Ural-2
205	Akesu	new	Pan-sus	127	Ural-2
215	Akesu	new	Pan-sus	Orphan or New	Not defined
34	Akesu	rela	Pan-sus	127	Ural-2
184	Kashgar	rela	RS	Orphan or New	Not defined
291	Akesu	rela	IRS	1626	T1
346	Akesu	rela	ND	Orphan or New	Not defined
116	Kashgar	new	Pan-sus	127	Ural-2
164	Hetian	rela	IRS	127	Ural-2
2	Kashgar	new	ND	127	Ural-2
163	Others	new	IS	127	Ural-2
283	Hetian	rela	RSE	127	Ural-2
16	Kashgar	rela	ND	127	Ural-2
27	Akesu	new	Pan-sus	Orphan or New	Unknown
341	Akesu	rela	ND	127	Ural-2
28	Akesu	new	Pan-sus	127	Ural-2
38	Akesu	new	I	127	Ural-2
25	Akesu	rela	Pan-sus	127	Ural-2
41	Akesu	rela	I	127	Ural-2
211	Akesu	new	Pan-sus	Orphan or New	Not defined
246	Akesu	rela	Pan-sus	78	T
20	Akesu	rela	Pan-sus	127	Ural-2
322	Hetian	rela	Pan-sus	127	Ural-2
250	Others	new	Pan-sus	602	Unknown
265	Akesu	rela	Pan-sus	37	T3
40	Akesu	rela	Pan-sus	53	T1
176	Hetian	new	Pan-sus	53	T1
92	Kashgar	new	Pan-sus	Orphan or New	Unknown
51	Akesu	new	Pan-sus	515	T2
66	Akesu	new	Pan-sus	Orphan or New	Unknown
324	Akesu	rela	IS	52	T2
338	Akesu	rela	ND	52	T2
191	Hetian	rela	IRSE	888	T2